

### AREA CHART (RESIDENTIAL)

|   |               |
|---|---------------|
| 1. TOTAL PLOT   | = 5316.71 sqm |
| 2. ROAD WIDENING AREA                                       | = 542.87 Sqm  |
| 3. NET PLOT AREA  | = 4773.84 Sqm |
| 4. COVERED AREA OF 1ST BASEMENT(PARKING)                    | = 1752.95 Sqm |
| 5. COVERED AREA ON STILT FLOOR (PARKING) "WEST SIDE" (FLAT) | = 446.30 Sqm  |
| 6. COVERED AREA ON STILT FLOOR (SHOP)                       | = 14.99 Sqm   |
| 7. COVERED AREA ON STILT FLOOR (PARKING)                    | = 416.30 Sqm  |
| 8. COVERED AREA ON FIRST FLOOR ("WEST SIDE")                | = 428.65 SQM  |
| 9. COVERED AREA ON SECOND FLOOR ("WEST SIDE")               | = 428.65 Sqm  |
| 10. COVERED AREA ON THIRD FLOOR ("WEST SIDE")               | = 428.65 Sqm  |
| 11. COVERED AREA ON 4TH FLOOR (WEST SIDE)                   | = 428.65 Sqm  |
| 12. COVERED AREA ON 5TH FLOOR (WEST SIDE)                   | = 428.65 Sqm  |
| 13. COVERED AREA ON 6TH FLOOR (WEST SIDE)                   | = 428.65 Sqm  |
| 14. COVERED AREA ON 7TH FLOOR (WEST SIDE)                   | = 428.65 Sqm  |
| 15. COVERED AREA ON 8TH FLOOR (WEST SIDE)                   | = 428.65 Sqm  |
| 16. COVERED AREA ON 9TH FLOOR (WEST SIDE)                   | = 428.65 Sqm  |
| 17. TOTAL COVERED AREA FOR F.A.R.                           | = 3837.84 SQM |

### PARKING CALCULATION : (RESIDENTIAL BLOCK)

|                                      |                    |
|--------------------------------------|--------------------|
| FLAT NO. 1                           | AREA = 88.05 SQ.MT |
| FLAT NO. 2                           | AREA = 84.70 SQ.MT |
| FLAT NO. 3                           | AREA = 86.71 SQ.MT |
| FLAT NO. 4                           | AREA = 86.71 SQ.MT |
| 4.0 NO. FLAT ON EACH FLOOR = 4.0X9.0 | = 36.0 NO.         |
| REQUIRED PARKING                     | = 36.0 NO.         |

### AVAILABLE SPACE FOR PARKING- STILT FLOOR =

|                    |         |
|--------------------|---------|
| = AREA 416.31 SQMT | = 14.88 |
| = 416.31/28        |         |

|                |                      |          |
|----------------|----------------------|----------|
| BASEMENT FLOOR | = AREA 1752.95 X 2.0 | = 109.55 |
|                | = 3505.90/32         |          |

|              |         |        |
|--------------|---------|--------|
| OPEN PARKING | = 90/23 | = 3.91 |
|--------------|---------|--------|

|               |                    |
|---------------|--------------------|
| TOTAL PARKING | = 117.0NO. PARKING |
|---------------|--------------------|

|       |                     |                         |
|-------|---------------------|-------------------------|
| TOTAL | = 14.88+109.55+3.91 | = 128.34 SAY 128.00 ECS |
|-------|---------------------|-------------------------|

### AREA CHART (COMMERCIAL)

|   |               |
|---|---------------|
| 1. TOTAL PLOT                               | = 5316.71 sqm |
| 2. ROAD WIDENING AREA                       | = 542.87 Sqm  |
| 3. NET PLOT AREA                            | = 4773.84 Sqm |
| 4. COVERED AREA OF 1ST BASEMENT(PARKING)    | = 1752.95 Sqm |
| 5. COVERED AREA ON GROUND FLOOR (EAST SIDE) | = 1109.90 Sqm |
| 6. COVERED AREA ON FIRST FLOOR (EAST SIDE)  | = 805.55 Sqm  |
| 7. COVERED AREA ON SECOND FLOOR (EAST SIDE) | = 886.85 Sqm  |
| 8. COVERED AREA ON THIRD FLOOR (EAST SIDE)  | = 886.85 Sqm  |
| 9. COVERED AREA ON 4TH FLOOR (EAST SIDE)    | = 886.85 Sqm  |
| 10. COVERED AREA ON 5TH FLOOR (EAST SIDE)   | = 886.85 Sqm  |
| 11. COVERED AREA ON 6TH FLOOR (EAST SIDE)   | = 886.85 Sqm  |
| 12. COVERED AREA ON 7TH FLOOR (EAST SIDE)   | = 886.85 Sqm  |
| 13. COVERED AREA ON 8TH FLOOR (EAST SIDE)   | = 886.85 Sqm  |
| 14. MUMMITY & MACHINE ROOM                  | = 258.35 Sqm  |
| 15. TOTAL COVERED AREA FOR FAR              | = 7236.55 SQM |

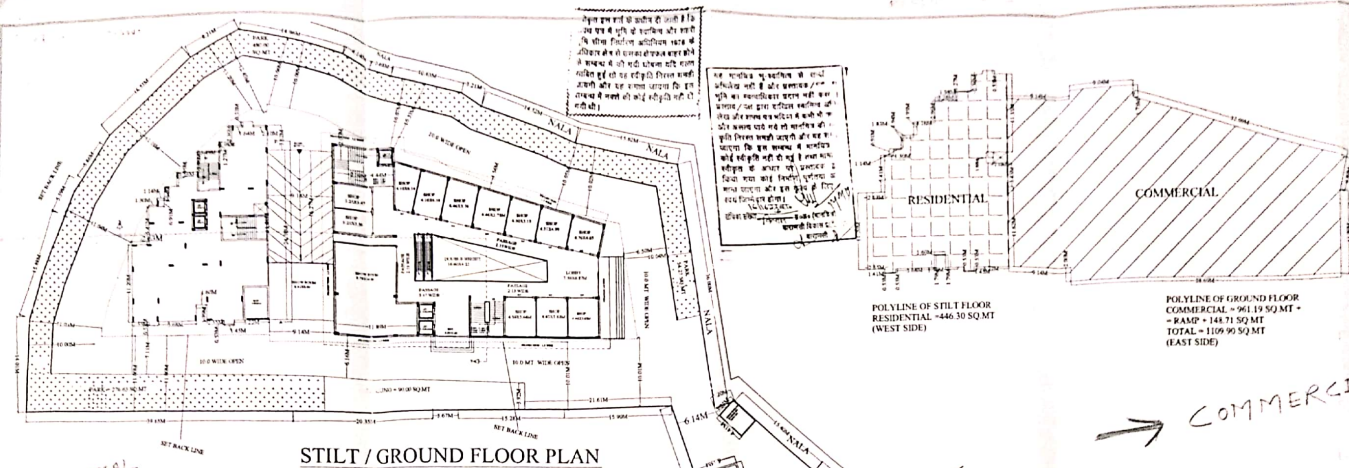
### MUMMITY CALCULATION: RESIDENTIAL & COMMERCIAL:-

|                                  |          |
|----------------------------------|----------|
| 12. 62X8.56+3.02X8.29+11.35X3.66 |          |
| +3.39X9.32+6.13X3.66X0.91        |          |
| -108.03+74.94+41.54+31.59+2.25   | = 258.35 |

### PARKING CALCULATION COMMERCIAL:

|                     |  |  |
|---------------------|--|--|
| REQUIRED PARKING    | = 961.18+805.55+886.85+                |  |
|                     | = 886.85+886.85+886.85+886.85X1.25/100 |  |
|                     | = 88.59                                |  |
| RESIDENCE PARKING   | = 36.00                                |  |
| ADD 10% FOR VISITER | = 3.60 + 36.00                         |  |
|                     | = 39.60 + 88.59                        |  |
|                     | = 127.59 SAY 128.00 ECS                |  |

|                                   |                   |                |
|-----------------------------------|-------------------|----------------|
| 20. TOTAL COVERED AREA BOTH BLOCK | = 3887.84+7236.55 | = 11124.39 SQM |
| 21. GROUND COVERAGE               |                   | = 32.60%       |
| 22. F.A.R.                        |                   | = 2.330        |



RESIDENTIAL

STILT / GROUND FLOOR PLAN

POLYLINE OF STILT FLOOR  
RESIDENTIAL - 446.30 SQ MT  
(WEST SIDE)

POLYLINE OF GROUND FLOOR  
COMMERCIAL - 961.19 SQ MT  
- RAMP - 144.71 SQ MT  
TOTAL - 1109.90 SQ MT  
(EAST SIDE)

COMMERCIAL



PROPOSED GROUP HOUSING/  
COMMERCIAL PLAN  
OF AKAZI NO. 401 & 402  
MAUZA-KESHARIPUR, PARAGANA-  
DEHAT AMANAT, DISTT-VARANASI.

OWNER NAME

M/S AGRANI HOMES PVT. LTD.  
DIRECTOR-SRI ALOK KUMAR S/O SRI P. SINGH

OWNER SIG

*Alok Kumar*

SHEET NO.

02/10

SCALE

1:100

ARCHITECT



| AREA CHART (RESIDENTIAL)   | AREA CHART (COMMERCIAL)   |
|--|---|
| TOTAL PLOT = 5116.71 Sqm<br>ROAD SURROUNDING AREA = 146.87 Sqm<br>NET PLOT AREA = 4773.84 Sqm<br>COVERED AREA OF 1ST BASEMENT (PARKING) = 1772.25 Sqm<br>COVERED AREA OF 2ND BASEMENT (PARKING) = 1772.25 Sqm<br>COVERED AREA ON 1ST FLOOR (PARKING WEST SIDE) (PLAT) = 446.30 Sqm<br>COVERED AREA ON 1ST FLOOR (RAMP) = 144.71 Sqm<br>COVERED AREA OF 1ST FLOOR (PARKING) = 416.90 Sqm<br>COVERED AREA ON FIRST FLOOR (WEST SIDE) = 428.67 Sqm<br>COVERED AREA ON SECOND FLOOR (WEST SIDE) = 428.67 Sqm<br>COVERED AREA ON THIRD FLOOR (WEST SIDE) = 428.67 Sqm<br>COVERED AREA ON 4TH FLOOR (WEST SIDE) = 428.67 Sqm<br>COVERED AREA ON 5TH FLOOR (WEST SIDE) = 428.67 Sqm<br>COVERED AREA ON 6TH FLOOR (WEST SIDE) = 428.67 Sqm<br>TOTAL COVERED AREA FOR F.A.R. = 3847.84 SQMT | 1. TOTAL PLOT = 5116.71 Sqm<br>2. ROAD SURROUNDING AREA = 146.87 Sqm<br>3. NET PLOT AREA = 4773.84 Sqm<br>4. COVERED AREA OF 1ST BASEMENT (PARKING) = 1772.25 Sqm<br>5. COVERED AREA OF 2ND BASEMENT (PARKING) = 1772.25 Sqm<br>6. COVERED AREA ON GROUND FLOOR (EAST SIDE) = 1109.90 Sqm<br>7. COVERED AREA ON FIRST FLOOR (EAST SIDE) = 868.87 Sqm<br>8. COVERED AREA ON SECOND FLOOR (EAST SIDE) = 868.87 Sqm<br>9. COVERED AREA ON THIRD FLOOR (EAST SIDE) = 868.87 Sqm<br>10. COVERED AREA ON 4TH FLOOR (EAST SIDE) = 868.87 Sqm<br>11. COVERED AREA ON 5TH FLOOR (EAST SIDE) = 868.87 Sqm<br>12. COVERED AREA ON 6TH FLOOR (EAST SIDE) = 868.87 Sqm<br>13. COVERED AREA ON 7TH FLOOR (EAST SIDE) = 868.87 Sqm<br>14. MON. TV & MACHINE ROOM = 238.31 Sqm<br>15. TOTAL COVERED AREA FOR F.A.R. = 7236.15 SQMT<br>MONTHLY CALCULATION: RESIDENTIAL & COMMERCIAL -<br>12. COVERED AREA ON 1ST FLOOR = 446.30<br>13. RAMP = 144.71<br>14. TOTAL COVERED AREA = 591.01 |
| <b>PARKING CALCULATION: (RESIDENTIAL BLOCK)</b><br>AT NO. 1 AREA = 88.85 SQ MT<br>AT NO. 2 AREA = 88.85 SQ MT<br>AT NO. 3 AREA = 88.85 SQ MT<br>AT NO. 4 AREA = 88.85 SQ MT<br>NO. FLAT ON EACH FLOOR = 4.028.0<br>REQUIRED PARKING = 36.0 NO.<br>AVAILABLE SPACE FOR PARKING:<br>ALLT FLOOR = AREA 416.31 SQMT<br>= 416.31/28 = 14.88<br>BASEMENT FLOOR = AREA 1752.95 X 2.0<br>= 3505.9032 = 109.55<br>OPEN PARKING = 90.23 = 3.91<br>TOTAL PARKING = 117.09 NO. PARKING<br>AL = 14.88+109.55+3.91 = 128.34 SAY 128.00 ECS   | <b>PARKING CALCULATION COMMERCIAL:</b><br>REQUIRE U PARKING = 961.19+805.55+886.55+<br>= 856.55+856.55+856.55+856.55X1.25/100<br>= 85.69<br>RESIDENCE PARKING = 36.00<br>ADD 10% FOR VISITOR = 3.60+36.00<br>= 39.60+85.69<br>= 125.29 SAY 128.00 ECS   |
| 20. TOTAL COVERED AREA WITHIN BLOCK = 3847.84+7236.15 = 11084.99 SQMT<br>21. GROUND COVERED AREA = 7236.15<br>22. F.A.R. = 2.190   |   |