

# PRAYAGRAJ DEVELOPMENT AUTHORITY PRAYAGRAJ



APARTMENT PLAN ON KHASRA NO 643/1,  
643/2, 644, 645, VILLAGE-DEVRAKH & KHASRA  
NO.518, 534 CHAKBURA NAINI PRAYAGRAJ

LATITUDE - 25-23'-25" N  
LONGITUDE - 81-52'-59" E  
AREA CHART -

- PHASE - I AREA = 2361.93 MP
- PHASE - II AREA = 4459.43 MP
- PHASE - III AREA = 1532.88 MP
- TOTAL SCHEME AREA = 8354.24 MP (100%)
- PHASE-I COV. AREA = 887.07
- PHASE-II COV. AREA = 1902.86
- PHASE-III COV. AREA = 490.64
- COVERED AREA = 3080.59 MP (36.99%)
- ROAD AREA = 1009.00 MP (12.09%)
- UNCOVERED AREA = 1366.00 MP (16.30%)
- PARK AND OPEN AREA = 3318.48 MP (39.70%)
- NOS. OF BLOCK SARAL (E.W.S.) = 58/18-44 NOS.
- NOS. OF BLOCK SAHAJ (L.I.G.) = 22/18-32 NOS.
- NOS. OF FLOOR = 272 NOS.
- AREA OF ONE BLOCK SARAL (E.W.S.) = 128.37 MP
- AREA OF ONE BLOCK SAHAJ (L.I.G.) = 166.32 MP
- AREA OF ONE BLOCK (L.I.G./IBHK) = 200.32 MP
- REQUIRED CAR PARKING PER 3 UNIT = 1 CAR SPACE
- 272/3 = 90.66 CAR SPACE
- SARAL = 91.00 CAR SPACE
- 1306/13.75 = 95.00 CAR SPACE

SCALE - (ACCORDING TO  
AUTOCAD SOFTWARE)

PROJECT : JAHNAVI APARTMENT, PHASE-I,II,III  
NAINI PRAYAGRAJ

LEOHPAL  
DRAFT'S MAN  
H.D. MAN  
JEET  
A.E. T.P. EXEN.  
INCHARGE L.A.

CHIEF ENG.  
SECRETARY  
VICE CHAIRMAN

STRUCTURAL  
CONSULTANTS :  
SANA PALACE & SHARDAAF ROAD  
RAZDATTAGANI, LUCKNOW  
MOB : 9933607256 (0522) - 4948889

DR. JYOTI  
JAHNAVI APARTMENT LIG PLATS SITE LAYOUT  
AT NAINI, ALLAHABAD (PRAYAGRAJ)

PHASE WISE FLAT AREA CALCULATION				
PHASE	PHASE I	PHASE II	PHASE III	
TYPE OF FLAT	E.W.S. FLAT (SARAL)	L.I.G. /IBHK (SAHAJ)	BLOCK-2X18-32	LOI 1 IBHK
NOS. OF UNIT	BLOCK-3X18-48	BLOCK-3X18-48	BLOCK-3X18-48	BLOCK-2X18-32
CARPET AREA	24.81 MP	32.08 MP	35.88 MP	56.09 MP
COVERED AREA	28.67 MP	37.41 MP	45.47 MP	65.47 MP
SUPER BUILTUP AREA	32.34 MP	41.54 MP	50.08 MP	70.08 MP



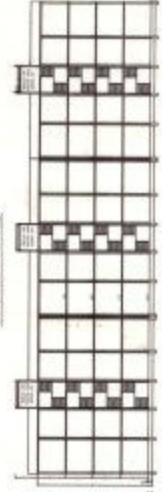
TYPICAL FLOOR PLAN (LIG /IBHK FLATS (FULL BLOCK))



FRONT ELEVATION



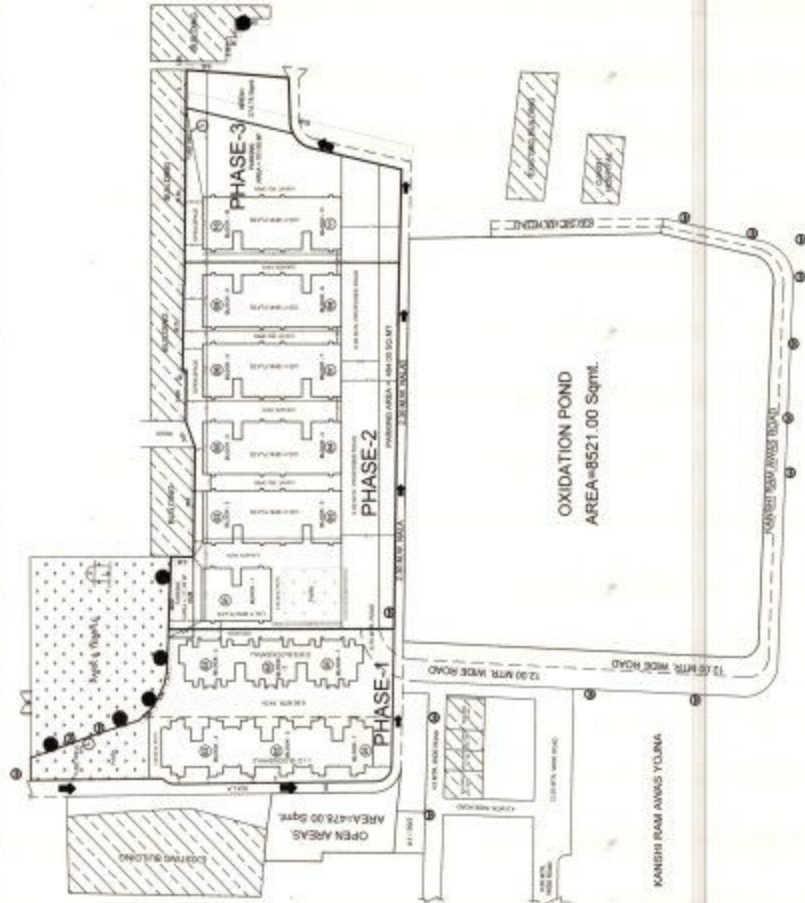
SECTION AT-AB



SECTION AT - XX (L.I.G.) (SAHAJ)



SECTION AT - XX (E.W.S.) (SARAL)



SITE LAYOUT PLAN



GROUND FLOOR PLAN L.I.G. (SAHAJ)



GROUND FLOOR PLAN E.W.S. (SARAL)

FRONT ELEVATION (L.I.G.) (SAHAJ)



FRONT ELEVATION (E.W.S.) (SARAL)





# PRAYAGRAJ DEVELOPMENT AUTHORITY PRAYAGRAJ



## APARTMENT PLAN ON KHASRA NO.643/1, 643/2, 644, 645, VILLAGE-DEVRAKH & KHASRA NO.518, 534 CHAKBABURA NAINI PRAYAGRAJ

LATITUDE - 25-23'-25"- N - 25-23'-25"- N  
LONGITUDE - 81-52'-56"- E - 81-53'-02"- E

### AREA CHART-

PHASE - I AREA	=	2361.93 M <sup>2</sup>
PHASE - II AREA	=	4459.43 M <sup>2</sup>
PHASE - III AREA	=	1532.88 M <sup>2</sup>
TOTAL SCHEME AREA	=	8354.24 M <sup>2</sup> (100%)
PHASE-I -COV. AREA	=	887.07
PHASE-II -COV. AREA	=	1802.88
PHASE-III -COV. AREA	=	400.64
COVERED AREA	=	3090.59 M <sup>2</sup> (36.99%)
ROAD AREA	=	1009.00 M <sup>2</sup> (12.08%)
PARKING AREA	=	1306.00 M <sup>2</sup> (15.63%)
PARK AND OPEN AREA	=	2948.65 M <sup>2</sup> (35.30%)
NOS. OF BLOCK SARAL (E.W.S.)	=	3X16=48.00 NOS.
NOS. OF BLOCK SAHAJ (L.I.G.)	=	3X16=48.00 NOS.
L.I.G. 1 BHK (PHASE-II)	=	9X16=144 NOS.
L.I.G. 1 BHK (PHASE-III)	=	2X16=32 NOS.
NOS. OF FLATS (PHASE-I+II+III)	=	272 NOS.
NOS. OF FLOOR	=	G+3 FLOOR'S
AREA OF ONE BLOCK SARAL (E.W.S.)	=	129.37 M <sup>2</sup>
AREA OF ONE BLOCK SAHAJ (L.I.G.)	=	166.32 M <sup>2</sup>
AREA OF ONE BLOCK (L.I.G./1BHK)	=	200.32 M <sup>2</sup>

REQUIRED CAR PARKING PER 3 UNIT = 1 CAR SPACE

272/ 3	=	90.66 CAR SPACE
SAY	=	91.00 CAR SPACE
1306/13.75	=	95.00 CAR SPACE

SCALE - (ACCORDING TO  
AUTOCAD SOFTWARE)



PROJECT **JAHNAVI APARTMENT, PHASE-I,II,III**  
NAINI PRAYAGRAJ

  
LEKHPAL

  
DRAFT'S MAN

  
H.D. MAN

  
J.E.

  
A.E.

  
T.P.

  
EX.EN.

  
INCHARGE L.A.

  
CHIEF ENGG.

  
SECRETARY

  
VICE CHAIRMAN

STRUCTURAL  
CONSULTANTS :

**VASCON CONSULTANTS**

SANA PALACE, 8, SHAHNAJAF ROAD  
HAZRATGANJ, LUCKNOW  
MOB ,09838007256, (0522) - 4064889

DESIGN  
Capt Manoj Wasan (Retd)  
BE (IIT ROORKEE), M TECH (IIT KANPUR)  
MBA (SYMBIOSIS PUNE)

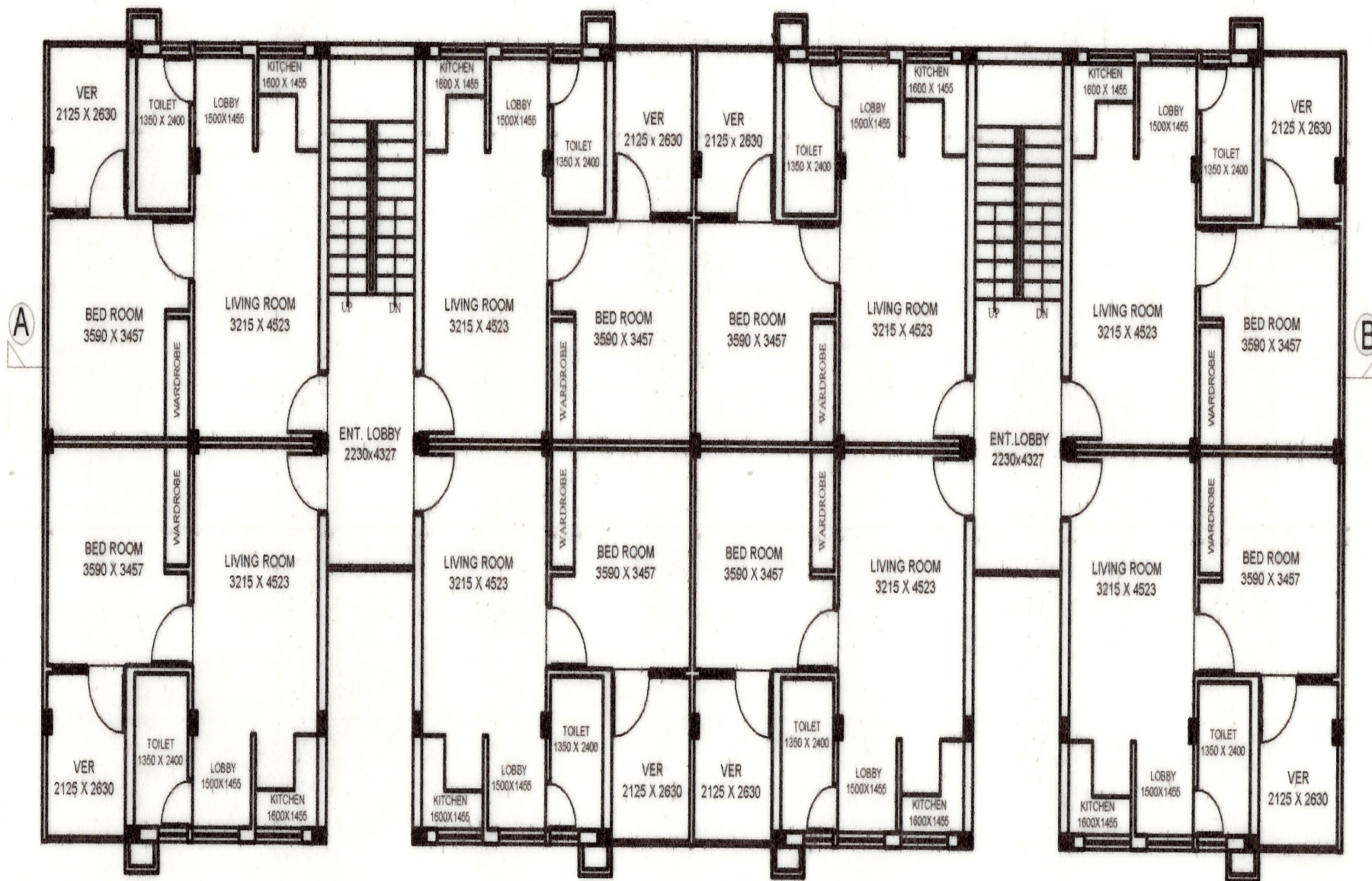
DRG TITLE  
JAHNAVI APARTMENT LIG FLATS SITE LAYOUT  
AT NAINI, ALLAHABAD (PRAYAGRAJ)

DRAWN - : RAJAN MISHRA

PHASE WISE FLAT AREA CALCULATION

PHASE	PHASE I		PHASE II	PHASE III
TYPE OF FLAT	E.W.S. FLAT (SARAL)	L.I.G. FLAT (SAHAJ)	L.I.G./1BHK	LIG 1 BHK
NO. OF UNIT	BLOCK-3X16=48	BLOCK-3X16=48	BLOCK-9X16=144	BLOCK-2X16=32
CARPET AREA	24.61 M <sup>2</sup>	32.05 M <sup>2</sup>	35.69 M <sup>2</sup>	35.69 M <sup>2</sup>
COVERED AREA	28.67 M <sup>2</sup>	37.41 M <sup>2</sup>	45.47 M <sup>2</sup>	45.47 M <sup>2</sup>
SUPER BUILTUP AREA	32.34 M <sup>2</sup>	41.54 M <sup>2</sup>	50.08 M <sup>2</sup>	50.08 M <sup>2</sup>







This architectural drawing shows the elevation of a building facade. The facade is divided into several vertical sections by columns. The vertical dimensions are indicated on the left and right sides of the drawing. The total height of the building is 12.45 units. The height of the ground floor is 3.00 units. The height of the upper floors is 3.00 units each. The height of the roof is 1.00 unit. The drawing includes details of windows, doors, and structural elements like columns and beams.

## SECTION AT-AB



