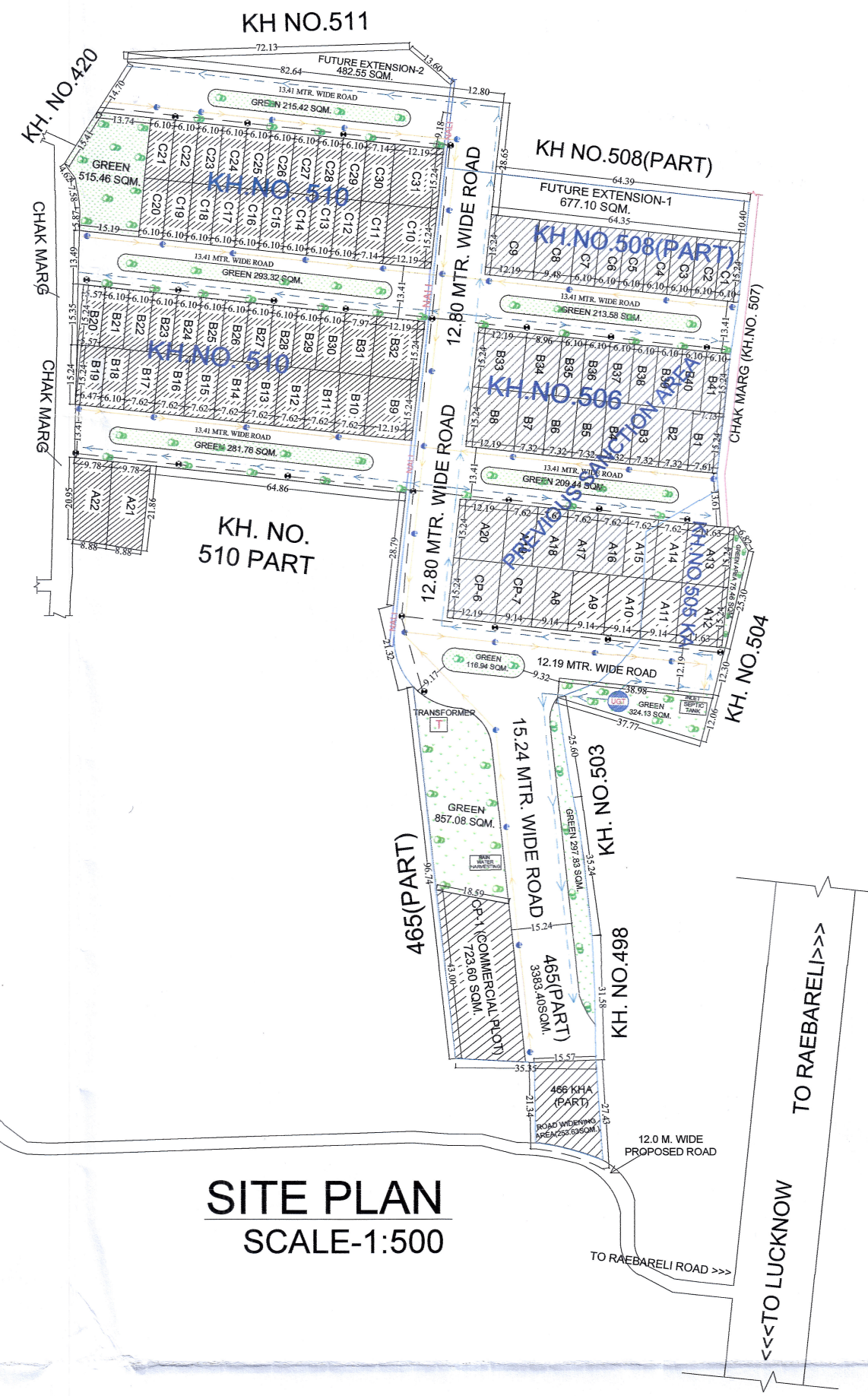


PROPOSED SITE

PROP.SITE

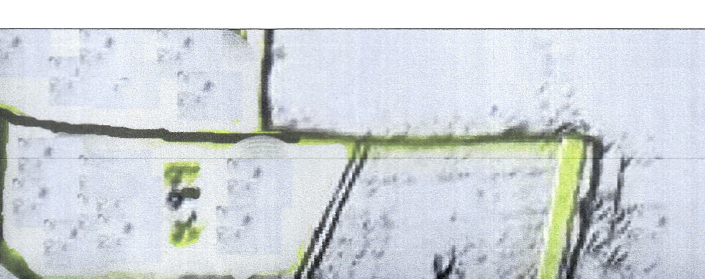
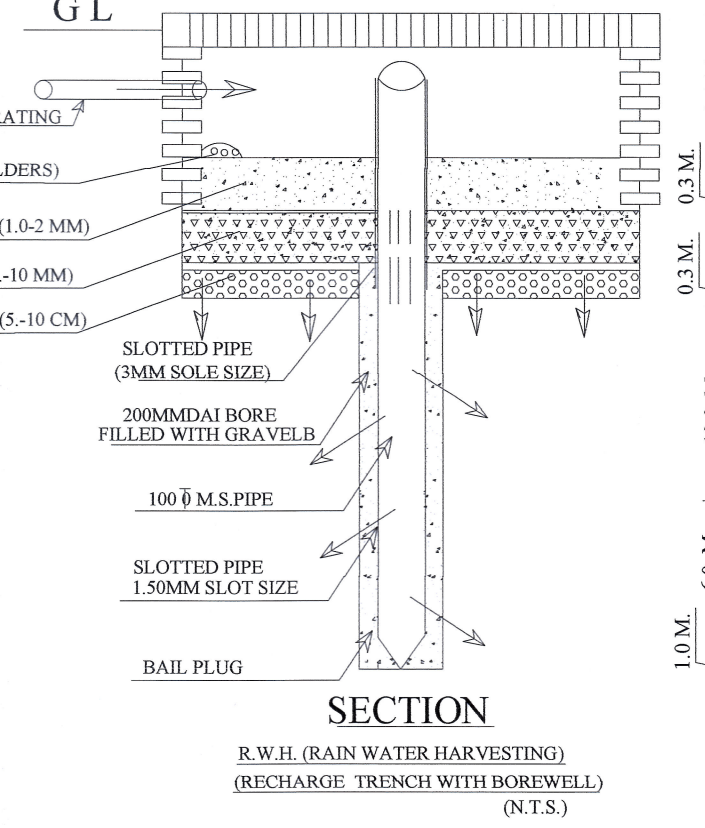
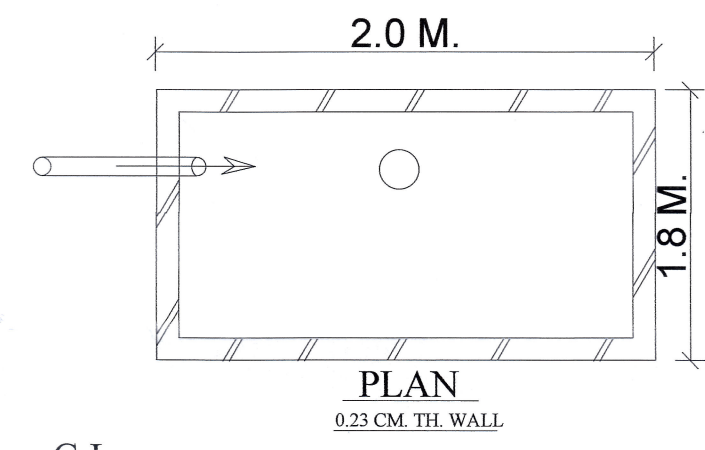
GEO LOCATION

LAT. - 26.557047213630483,
LONG. - 81.04674071370135

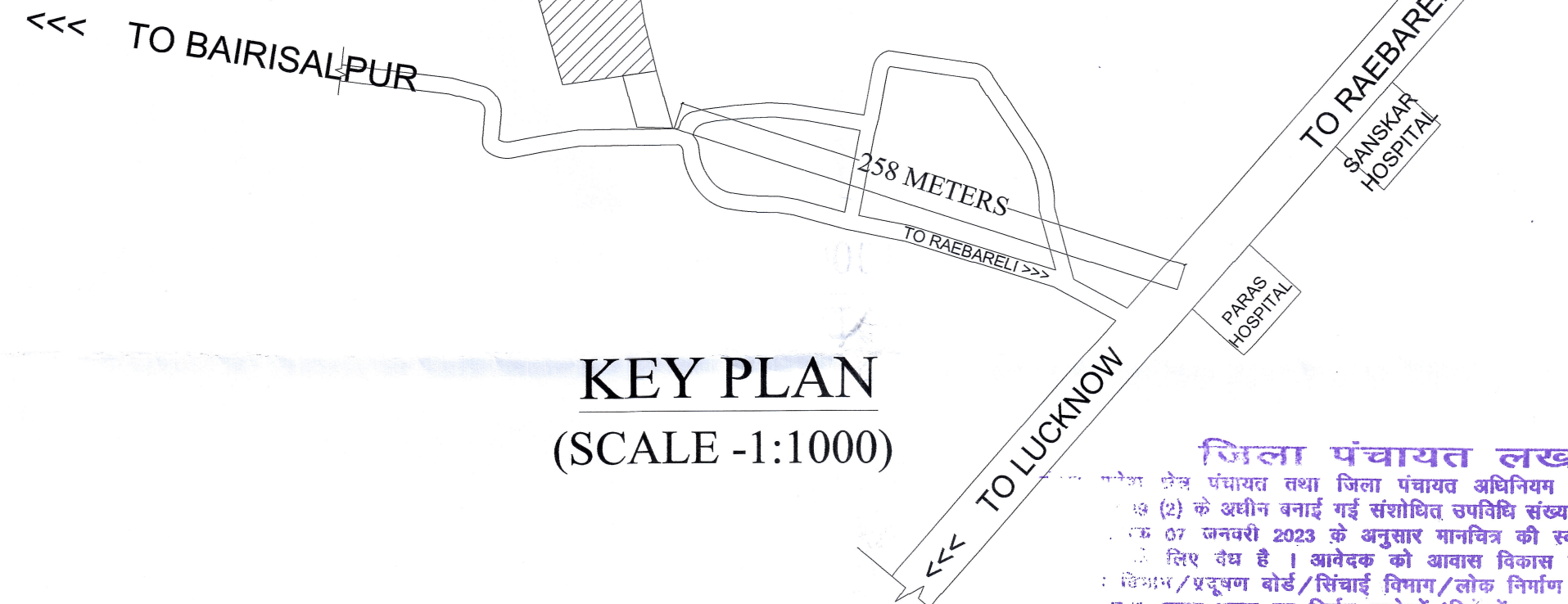


SITE PLAN
SCALE-1:500

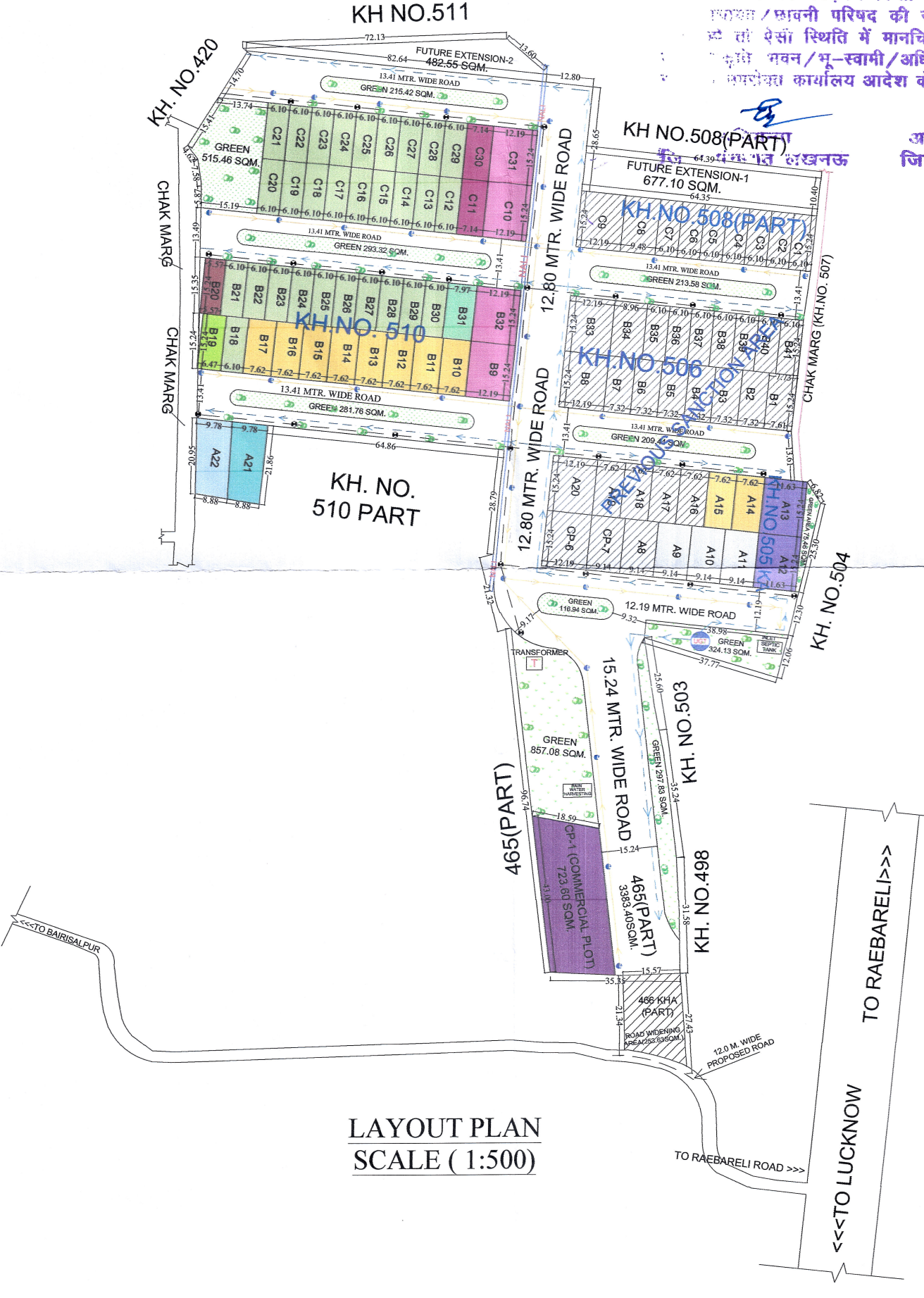
S/NO.	PLOT NO.	NO.OF PLOT	SIZE	AREA (SQM.)	TOTAL AREA (SQM.)	COLOUR CODE
1-	A8,A9,A10,A11	4	9.14 X 15.24	139.35 SQM.	557.40 SQM.	
2-	A12,A13	2	11.63 X 15.24	177.24 SQM.	354.48 SQM.	
3-	A14,A15,A16,A17, A18,A19,B10,B11, B12,B13,B14,B15, B16,B17	14	7.62 X 15.24	116.13 SQM.	1625.82 SQM.	
4-	A20,B8,B9,B32,B33, C9,C10,C31	8	12.19 X 15.24	185.81 SQM.	1486.48 SQM.	
5-	A21	1	-	201.39 SQM.	201.39 SQM.	
6-	A22	1	-	196.53 SQM.	196.53 SQM.	
7-	B1	1	-	116.97 SQM.	116.97 SQM.	
8-	B2,B3,B4,B5,B6,B7	6	7.32 X 15.24	111.48 SQM.	668.88 SQM.	
9-	B18,B21,B22,B23, B24,B25,B26,B27, B28,B29,B30,B35, B36,B37,B38,B39, B40,B41,C1,C2,C3, C4,C5,C6,C7,C12, C13,C14,C15,C16, C17,C18,C19,C20, C21,C22,C23,C24, C25,C26,C27,C28, C29	43	6.10 X 15.24	92.90 SQM.	3994.70 SQM.	
10-	B19	1	6.47 X 15.24	98.60 SQM.	98.60 SQM.	
11-	B20	1	5.57 X 15.24	84.88 SQM.	84.88 SQM.	
12-	B31	1	7.97 X 15.24	121.46 SQM.	121.46 SQM.	
13-	B34	1	8.96 X 15.24	136.55 SQM.	136.55 SQM.	
14-	C8	1	9.48 X 15.24	144.47 SQM.	144.47 SQM.	
15-	C11,C30	2	7.14 X 15.24	108.82 SQM.	217.64 SQM.	
16-	CP-1 (COMMERCIAL PLOT)	1	-	723.60 SQM.	723.60 SQM.	
17-	CP-6 (COMMERCIAL PLOT)	1	12.19 X 15.24	185.81 SQM.	185.81 SQM.	
18-	CP-7 (COMMERCIAL PLOT)	1	9.14 X 15.24	139.35 SQM.	139.35 SQM.	
TOTAL PLOT				90	11055.01 SQM.	



SAJRA PLAN



KEY PLAN
(SCALE -1:1000)



LAYOUT PLAN
SCALE (1:500)



SAJRA SUPER IMPOSED PLAN
SCALE - (1:500)

जिला पंचायत लखनऊ
जिला पंचायत लखनऊ
जिला पंचायत लखनऊ

PROJECT TITLE :- VEDIC VILLAGE PHASE-1 EXTENSION
PROPOSED ,REVISED & EXTENSION LAYOUT PLAN OF
M/S ANUSHNAN BUILDERS AND DEVELOPERS PVT. LTD.
SITUATED AT BAIRISALPUR, NIGOHA,
DISTRICT- LUCKNOW.
DIRECTOR- MR. ARUN PRATAP SINGH S/O
SHREE ASHOK SINGH

AREA STATEMENT:-

1-	TOTAL LAND AREA - 22032.03 SQMT.
2-	FUTURE EXTENSION-1 AREA = 677.10 SQMT. FUTURE EXTENSION-2 AREA = 482.55 SQMT. TOTAL FUTURE EXTENSION AREA (1+2) = (1159.65 SQMT.)
3-	ROAD WIDENING AREA - 253.63 SQMT.
4-	NET LAND AREA FOR PROJECT- 20618.75 SQMT.
5-	TOTAL PLOTTED AREA - 11055.01 SQMT. (53.62 %)
6-	TOTAL ROAD AREA - 6163.32 SQMT. (29.89 %)
7-	TOTAL GREEN AREA - 3400.42 SQMT. (16.49%)

PREVIOUS SANCTION AREA

S.NO.	KHASRA NO.	AREA (SQMT.)	VILLAGE
1.	465(PART)	1603.40 SQMT.	BAIRISALPUR
2.	465(PART)	1780.00 SQMT.	BAIRISALPUR
3.	506	7800.00 SQMT.	BAIRISALPUR
4.	508(PART)	1300.00 SQMT.	BAIRISALPUR
5.	466KHA (PART)	253.63 SQMT.	BAIRISALPUR
6.	505 KA	1070.00 SQMT.	BAIRISALPUR
7.	510 (PART)	8225.00 SQMT.	BAIRISALPUR
TOTAL AREA - 12737.03 SQM.			

PRESENT REVISED & EXTENSION AREA

S.NO.	KHASRA NO.	AREA (SQMT.)	VILLAGE
1.	465(PART)	1603.40 SQMT.	BAIRISALPUR
2.	465(PART)	1780.00 SQMT.	BAIRISALPUR
3.	506	7800.00 SQMT.	BAIRISALPUR
4.	508(PART)	1300.00 SQMT.	BAIRISALPUR
5.	466KHA (PART)	253.63 SQMT.	BAIRISALPUR
6.	505 KA	1070.00 SQMT.	BAIRISALPUR
7.	510 (PART)	8225.00 SQMT.	BAIRISALPUR
TOTAL AREA - 22032.03 SQM. (2.203203 HECT.)			

BOUNDARY WALL LENGTH- 912.39 RUM.
BOUNDARY WALL HEIGHT- 2.1 MTR.
TREE CALCULATIONS-
50 TREES REQUIRED/HECTARE
TREES REQUIRED TO BE PLANTED - 50 X 2.203203 = 110.16 NO.
TREES REQUIRED TO BE PLANTED - 111 TREES

LEGENDS OF DRAINAGE-

- WATER LINE - 50/36 DIA
- SEWER LINE - 300/200/150
- ELECTRICAL POLE - 9.0 MT. R.C.C.
- ROAD - BITUMINOUS ROAD
- TRANSFORMER
- NO. OF TREES - 111
- NP. MAIN HOLE
- UGT UNDER GROUND TANK
- SHOWN THIS PREVIOUS SANCTION AREA

TITLE : SUBMISSION PLAN

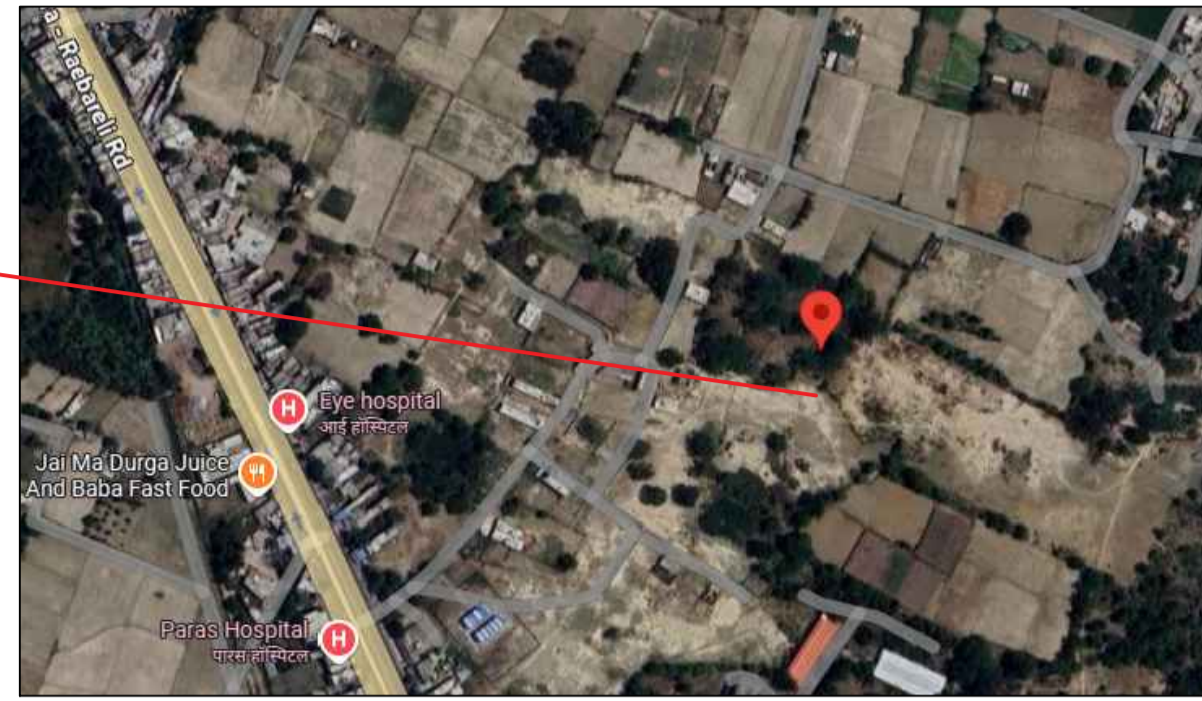
NOTE:- THIS MAP HAS BEEN PREPARED AS PER
JILA PANCHAYAT BY LAWS 3315/21A-06/2021-22
DATED- 28/10/2025

OWNER SIGN :

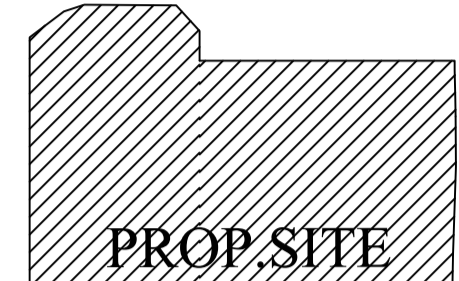
NORTH

ARCHITECT / ENGINEER SIGN.

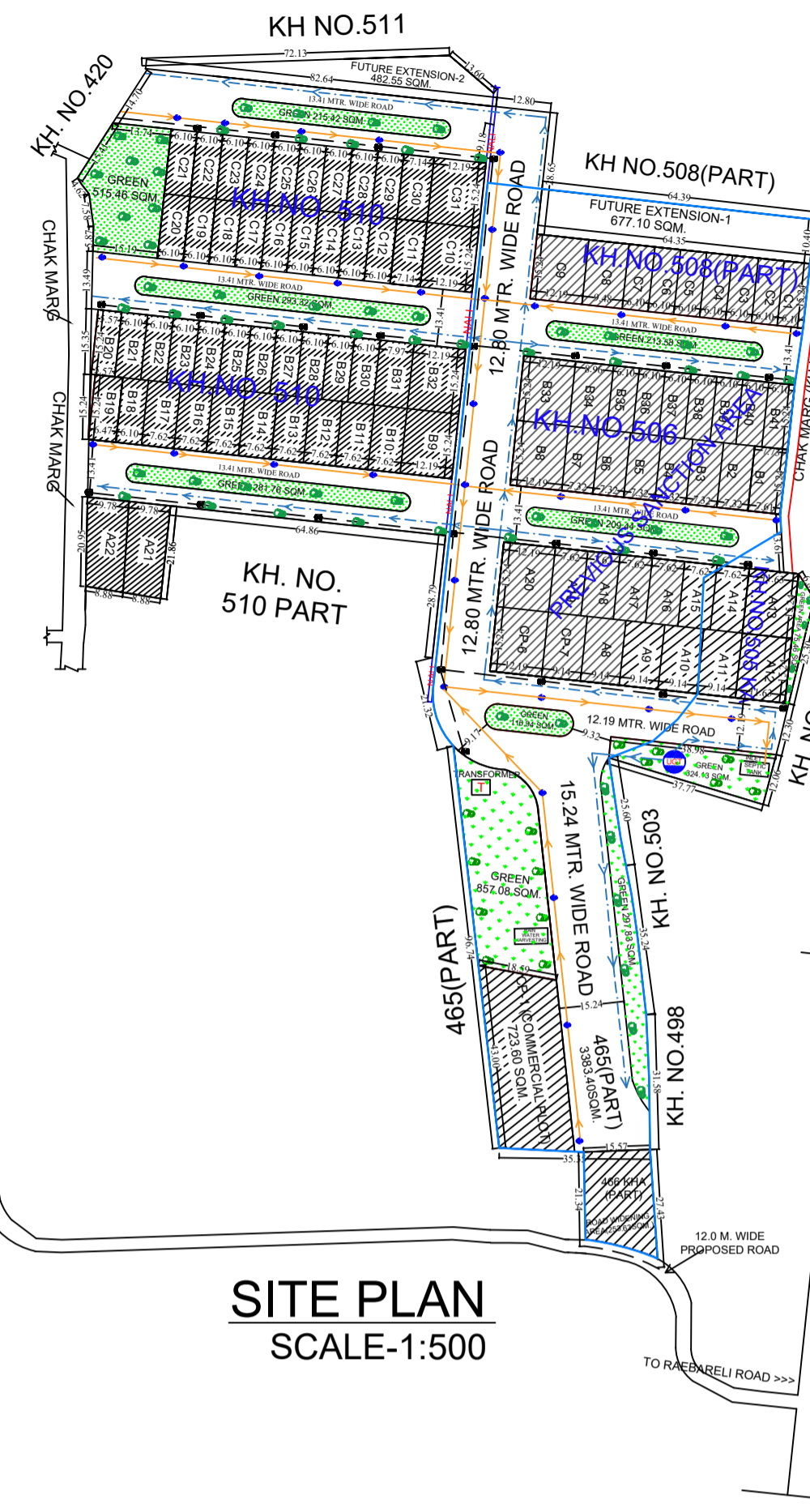
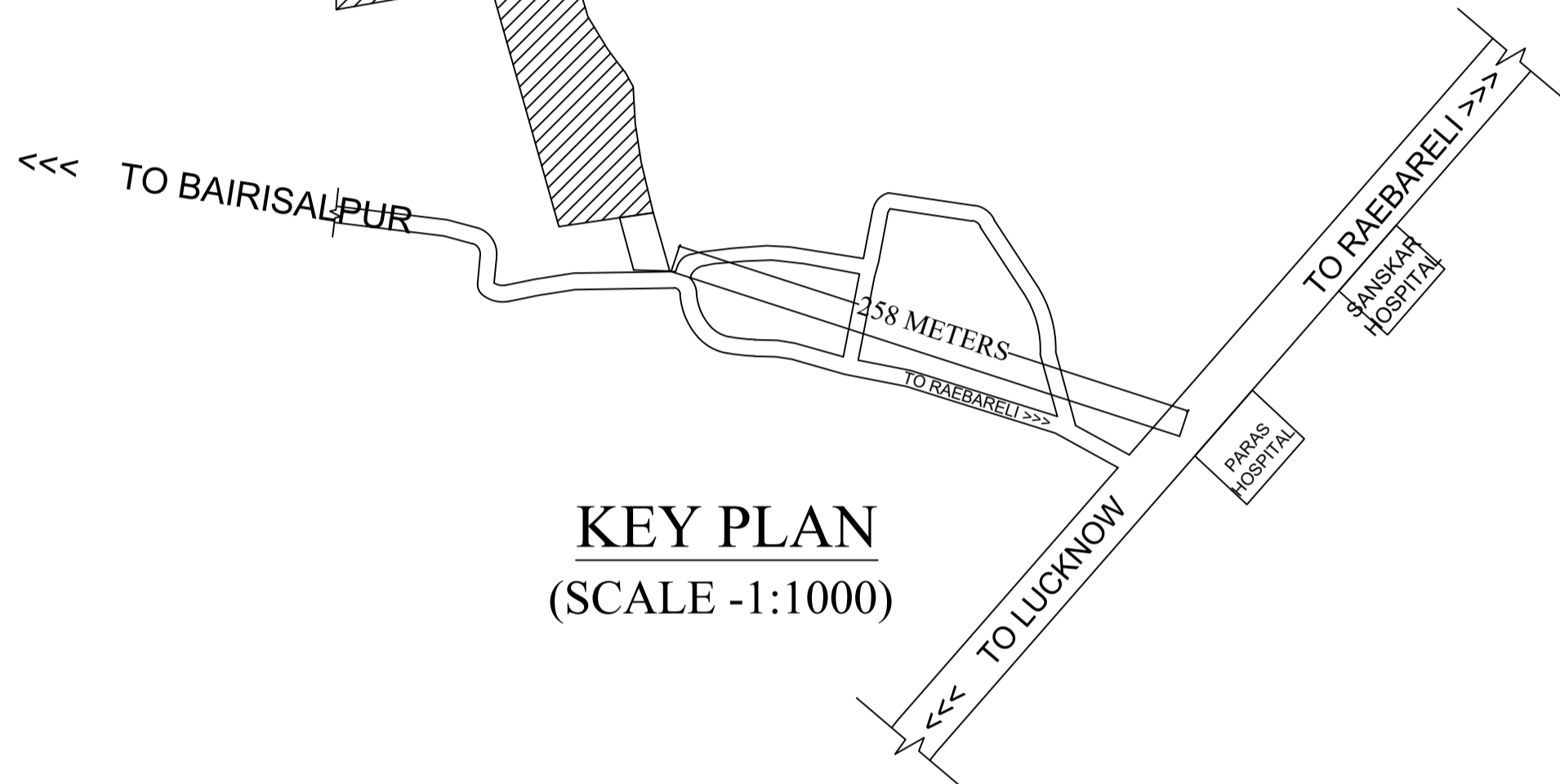
PROPOSED SITE



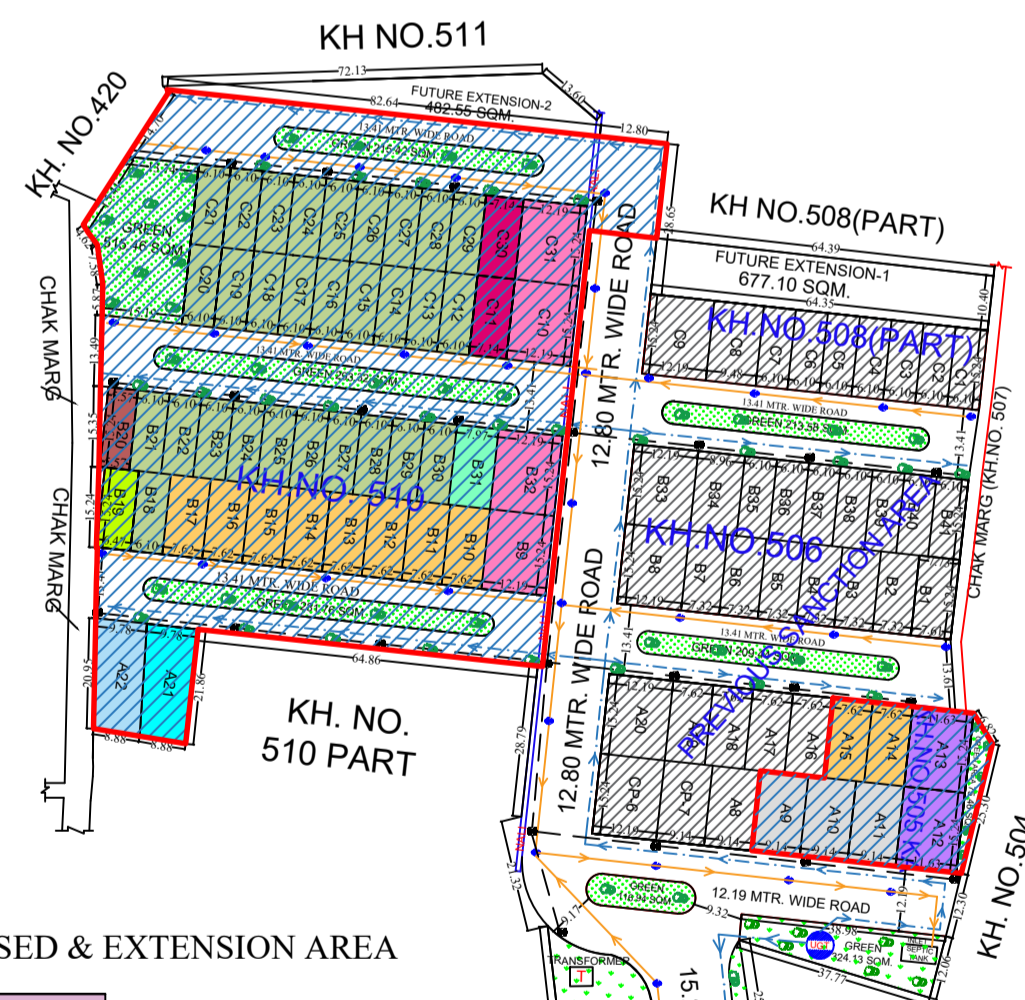
GEO LOCATION
LAT.- 26.557047213630483,
LONG.- 81.04674071370135



KEY PLAN
(SCALE -1:1000)



SITE PLAN
SCALE-1:500



LAYOUT PLAN
SCALE (1:500)

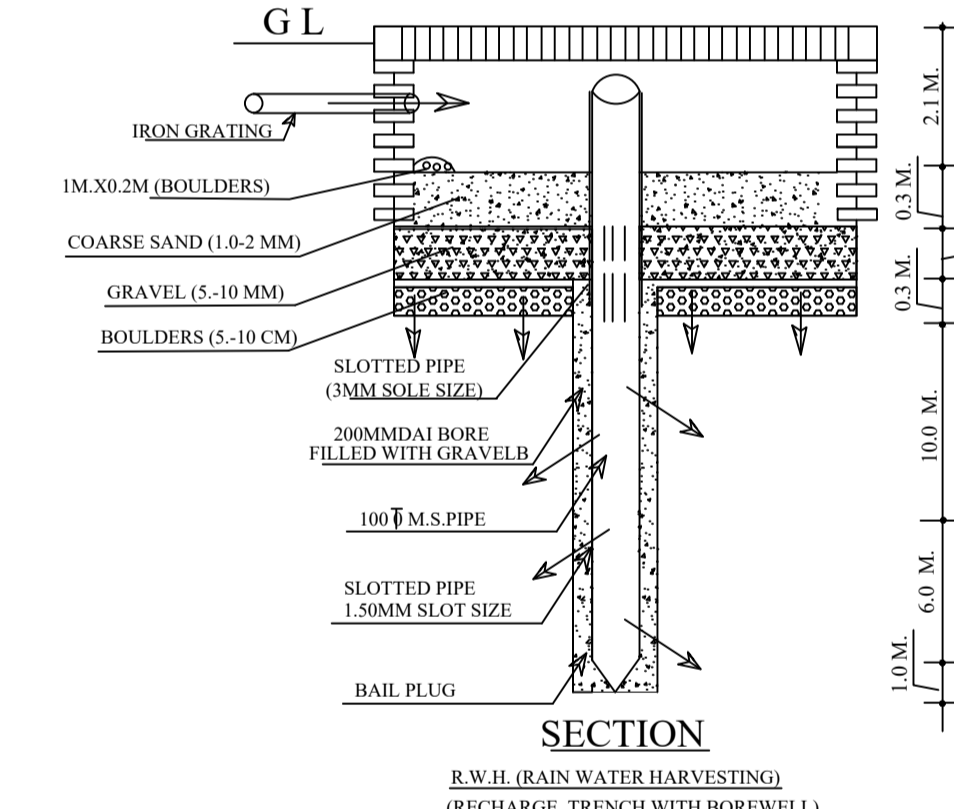
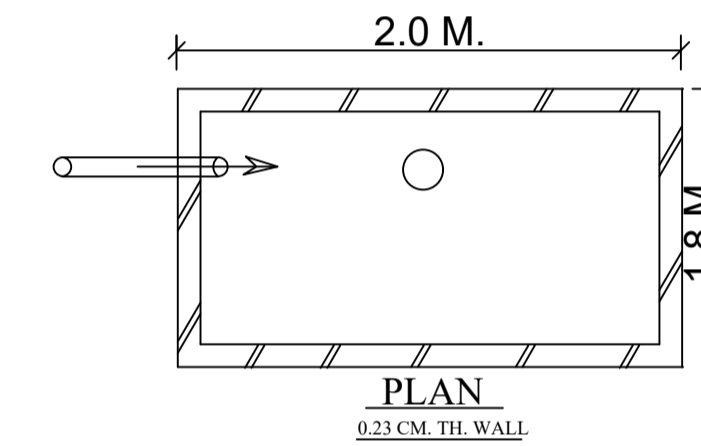
SHOWN THUS PRESENT REVISED & EXTENSION AREA

PRESENT REVISED & EXTENSION AREA			
S.NO.	KHASRA NO.	AREA (SQMT.)	VILLAGE
1.	505 KA	1070.00 SQMT.	BAIRISALPUR
2.	510 (PART)	8225.00 SQMT.	BAIRISALPUR
TOTAL AREA - 9295.00 SQMT.			



SAJRA SUPER IMPOSED PLAN
SCALE - (1:500)

S/NO	PLOT NO.	NO.OF PLOT	SIZE	AREA (SQM.)	TOTAL AREA (SQM.)	COLOR CODE
1-	A8,A9,A10,A11	4	9.14 X 15.24	139.35 SQM.	557.40 SQM.	
2-	A12,A13	2	11.63 X 15.24	177.24 SQM.	354.48 SQM.	
3-	A14,A15,A16,A17, A18,A19,B10,B11, B12,B13,B14,B15, B16,B17	14	7.62 X 15.24	116.13 SQM.	1625.82 SQM.	
4-	A20,B8,B9,B32,B33, C9,C10,C31	8	12.19 X 15.24	185.81 SQM.	1486.48 SQM.	
5-	A21	1	-	201.39 SQM.	201.39 SQM.	
6-	A22	1	-	196.53 SQM.	196.53 SQM.	
7-	B1	1	-	116.97 SQM.	116.97 SQM.	
8-	B2,B3,B4,B5,B6,B7	6	7.32 X 15.24	111.48 SQM.	668.88 SQM.	
9-	B18,B21,B22,B23, B24,B25,B26,B27, B28,B29,B30,B35, B36,B37,B38,B39, B40,B41,C1,C2,C3, C4,C5,C6,C7,C12, C13,C14,C15,C16, C17,C18,C19,C20, C21,C22,C23,C24, C25,C26,C27,C28, C29	43	6.10 X 15.24	92.90 SQM.	3994.70 SQM.	
10-	B19	1	6.47 X 15.24	98.60 SQM.	98.60 SQM.	
11-	B20	1	5.57 X 15.24	84.88 SQM.	84.88 SQM.	
12-	B31	1	7.97 X 15.24	121.46 SQM.	121.46 SQM.	
13-	B34	1	8.96 X 15.24	136.55 SQM.	136.55 SQM.	
14-	C8	1	9.48 X 15.24	144.47 SQM.	144.47 SQM.	
15-	C11,C30	2	7.14 X 15.24	108.82 SQM.	217.64 SQM.	
16-	CP-1 (COMMERCIAL PLOT)	1	-	723.60 SQM.	723.60 SQM.	
17-	CP-6 (COMMERCIAL PLOT)	1	12.19 X 15.24	185.81 SQM.	185.81 SQM.	
18-	CP-7 (COMMERCIAL PLOT)	1	9.14 X 15.24	139.35 SQM.	139.35 SQM.	
TOTAL PLOT				90	11055.01 SQM.	



SAJRA PLAN

PROJECT TITLE :- VEDIC VILLAGE PHASE-1 EXTENSION
PROPOSED ,REVISED & EXTENSION LAYOUT PLAN OF
M/S ANUSHTHAN BUILDERS AND DEVELOPERS PVT. LTD.
SITUATED AT BAIRISALPUR, NIGOHA.
DISTRICT- LUCKNOW.
DIRECTOR- MR. ARUN PRATAP SINGH S/O
SHREE ASHOK SINGH

AREA STATEMENT:-

1-	TOTAL LAND AREA - 22032.03 SQMT.
2-	FUTURE EXTENSION-1 AREA = 677.10 SQMT. FUTURE EXTENSION-2 AREA = 482.55 SQMT. TOTAL FUTURE EXTENSION AREA (1+2) = (1159.65 SQMT.)
3-	ROAD WIDENING AREA - 253.63 SQMT.
4-	NET LAND AREA FOR PROJECT- 20618.75 SQMT.
5-	TOTAL PLOTTED AREA - 11055.01 SQMT. (53.62 %)
6-	TOTAL ROAD AREA - 6163.32 SQMT. (29.89 %)
7-	TOTAL GREEN AREA - 3400.42 SQMT. (16.49%)

PREVIOUS SANCTION AREA

S.NO.	KHASRA NO.	AREA (SQMT.)	VILLAGE
1.	465(PART)	1603.40 SQMT.	BAIRISALPUR
2.	465(PART)	1780.00 SQMT.	BAIRISALPUR
3.	506	7800.00 SQMT.	BAIRISALPUR
4.	508(PART)	1300.00 SQMT.	BAIRISALPUR
5.	466KHA (PART)	253.63 SQMT.	BAIRISALPUR
5.	505 KA	1070.00 SQMT.	BAIRISALPUR
5.	510 (PART)	8225.00 SQMT.	BAIRISALPUR
TOTAL AREA - 12737.03 SQM.			

PRESENT REVISED & EXTENSION AREA

S.NO.	KHASRA NO.	AREA (SQMT.)	VILLAGE
1.	465(PART)	1603.40 SQMT.	BAIRISALPUR
2.	465(PART)	1780.00 SQMT.	BAIRISALPUR
3.	506	7800.00 SQMT.	BAIRISALPUR
4.	508(PART)	1300.00 SQMT.	BAIRISALPUR
5.	466KHA (PART)	253.63 SQMT.	BAIRISALPUR
6.	505 KA	1070.00 SQMT.	BAIRISALPUR
7.	510 (PART)	8225.00 SQMT.	BAIRISALPUR
TOTAL AREA - 22032.03 SQM. (2.203203 HECT.)			

BOUNDARY WALL LENGTH- 912.39 RUM.
BOUNDARY WALL HEIGHT- 2.1 MTR.

TREE CALCULATIONS-
50 TREES REQUIRED/HECTARE
TREES REQUIRED TO BE PLANTED - 50 X 2.203203 =110.16 NO.
TREES REQUIRED TO BE PLANTED - 111 TREES

LEGENDS OF DRAINAGE-

- WATER LINE - 50 DIA
- SEWER LINE - 300/200/150
- ELECTRICAL POLE - 9.0 MT.R.C.C. ROAD - BITUMINOUS ROAD
- TRANSFORMER
- NO. OF TREES - 111
- NP. MAIN HOLE
- UGT UNDER GROUND TANK
- SHOWN THIS PREVIOUS SANCTION AREA

TITLE : SUBMISSION PLAN

NOTE:-
THIS MAP HAS BEEN PREPARED AS PER
JILA PANCHAYAT BY LAWS 3315/21A-06/2021-22
DATED- 28/10/2025

OWNER SIGN : _____

NORTH

ARCHITECT / ENGINEER SIGN.