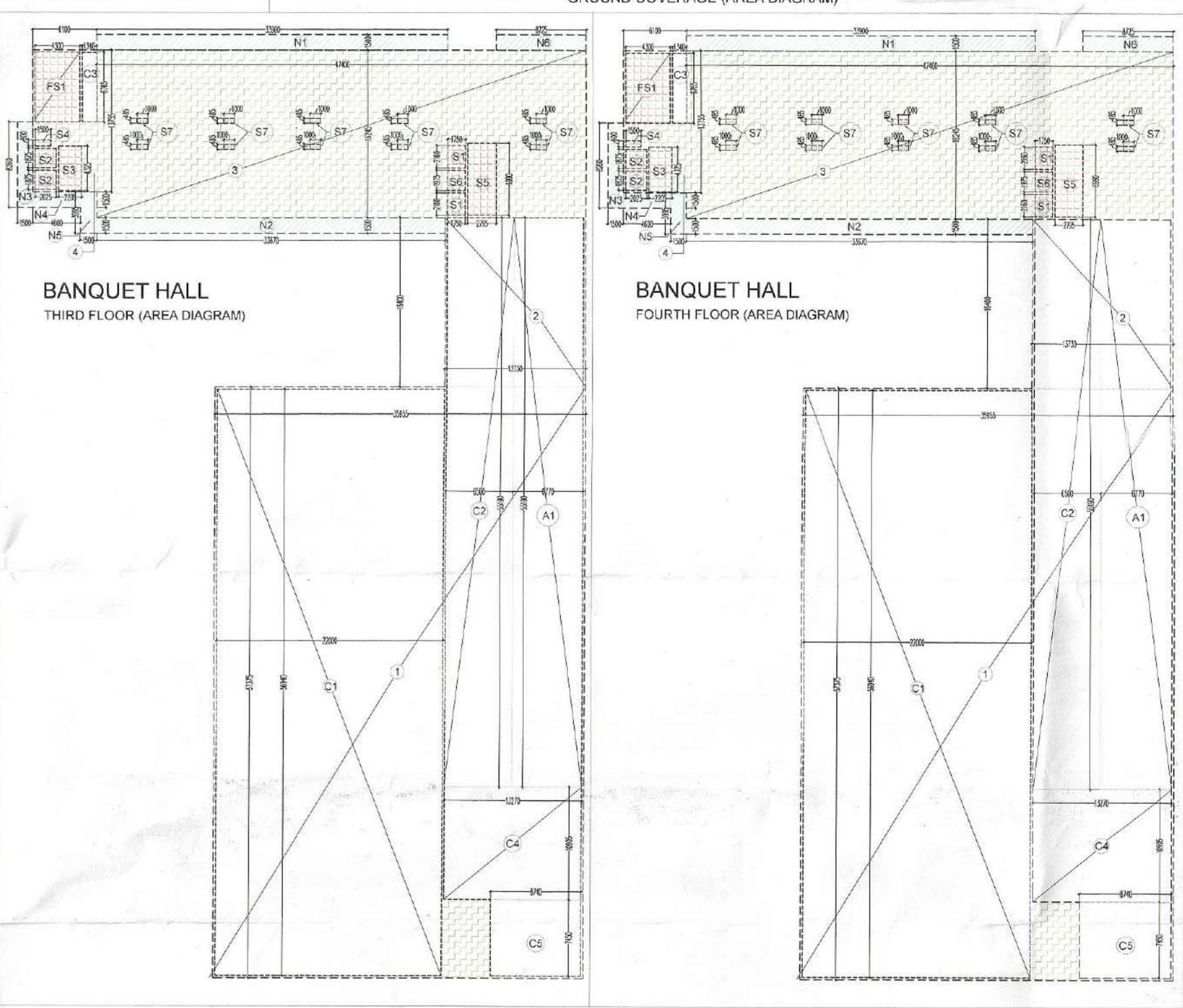
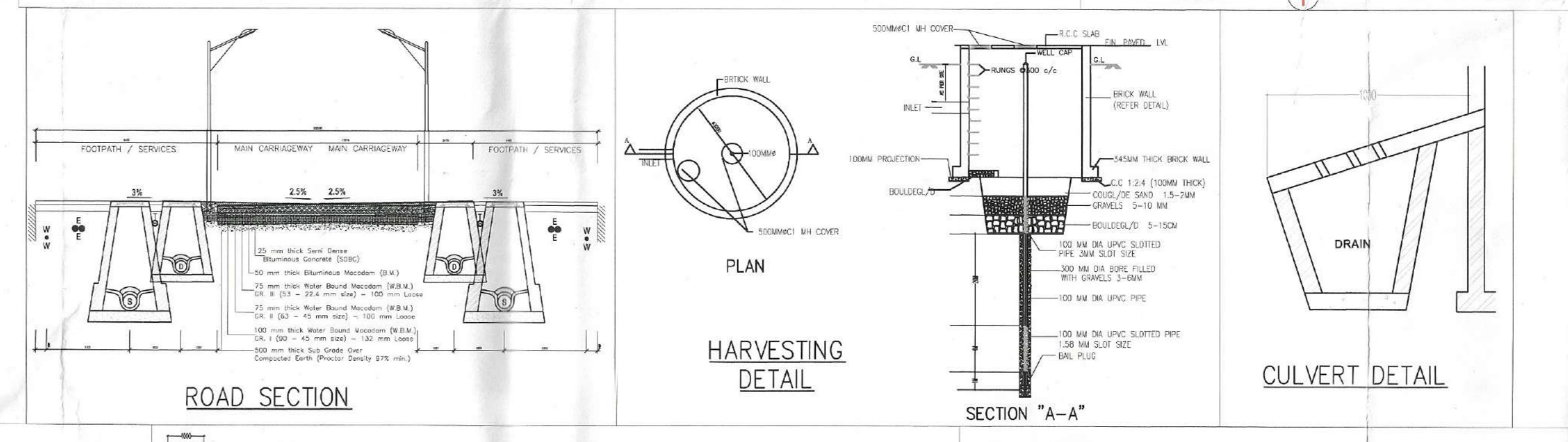
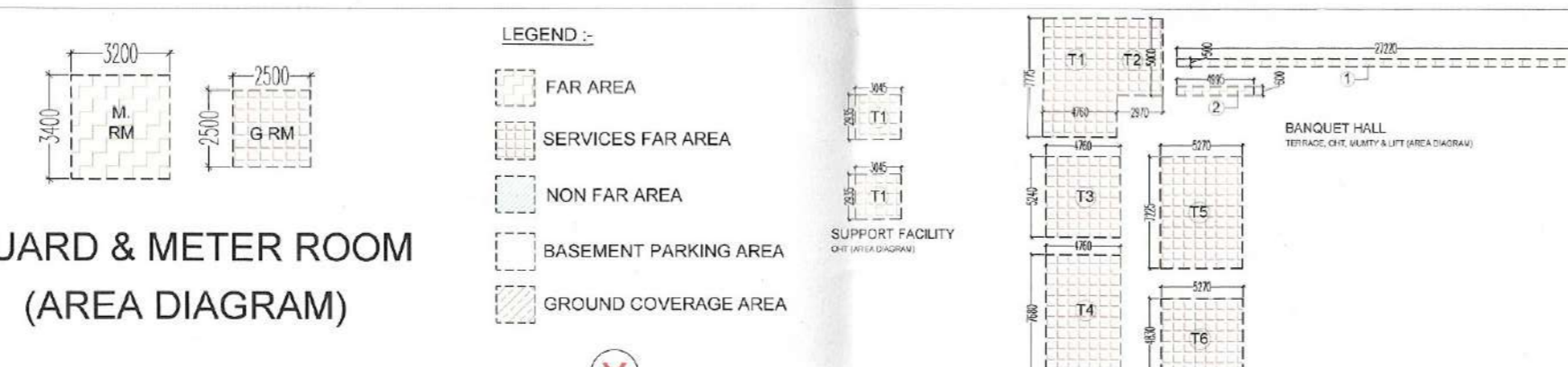


THESE SHOPS CAN BE USED FOR SUPPORT FACILITY SERVICES			
S.No	Support Services	Support Services in Hindi	No. of Shops
2	Milk Shop	दूध की दुकान	4
3	Flower Shop	फूल की दुकान	4
4	Cosmetics & Cards Shop	कॉस्मेटिक्स और कार्ड की दुकान	4
5	Barber Shop	बार्बर की दुकान	4
6	Beauty Parlour & Cosmetics	ब्यूटीशियन और कॉस्मेटिक्स की दुकान	4
7	Ice Cream Shop	इसक्रीम की दुकान	4
8	Coffee Shop	काफ़े और चाय की दुकान	4
9	Restaurant	रेस्टोरेंट	4
10	Pizza Shop	पिज़ा की दुकान	4
11	Barry / ATM	बैंक/एटीएम	4
12	Jewellery Shop	ज्वेलरी की दुकान	4
13	Sweets Shop	मीठाई की दुकान	4
14	Gifts & Novelties Shop	उत्सव और नवीयता की दुकान	4
15	Perfume & Fragrances Shop	डिफेंड और फ्रैग्रेंस की दुकान	4
16	Wedding & Party Supplies Shop	वाइडिंग और पार्टी सप्लाय की दुकान	4
17	Photography & Cameras Shop	फोटोग्राफी और कैमरे की दुकान	4

TREE SCHEDULE		
SYMBOL / KEYBOTANICAL NAME	QUANTITIES	DISCRPTION
	35	DECIDUOUS TREE
	35	EVERGREEN TREE
TOTAL TREE		70

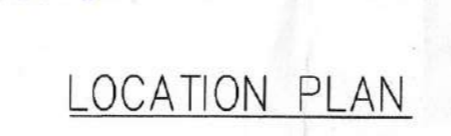
LANDSCAPE AREA CALCULATION			
NO.	DESCRIPTION	AREA (SQ.M)	TOTAL
1	PLANTING BEDS/CONCRETE	824.00	824.00
2	OPEN AREA	1111.00	1111.00
3	ROADWAY	1111.00	1111.00
4	PLANTING BEDS	824.00	824.00
5	PLANTING BEDS	824.00	824.00
6	PLANTING BEDS	824.00	824.00
7	PLANTING BEDS	824.00	824.00
8	PLANTING BEDS	824.00	824.00
9	PLANTING BEDS	824.00	824.00
10	PLANTING BEDS	824.00	824.00
11	PLANTING BEDS	824.00	824.00
12	PLANTING BEDS	824.00	824.00
13	PLANTING BEDS	824.00	824.00
14	PLANTING BEDS	824.00	824.00
15	PLANTING BEDS	824.00	824.00
16	PLANTING BEDS	824.00	824.00
17	PLANTING BEDS	824.00	824.00
18	PLANTING BEDS	824.00	824.00
19	PLANTING BEDS	824.00	824.00
20	PLANTING BEDS	824.00	824.00
21	PLANTING BEDS	824.00	824.00
22	PLANTING BEDS	824.00	824.00
23	PLANTING BEDS	824.00	824.00
24	PLANTING BEDS	824.00	824.00
25	PLANTING BEDS	824.00	824.00
26	PLANTING BEDS	824.00	824.00
27	PLANTING BEDS	824.00	824.00
28	PLANTING BEDS	824.00	824.00
29	PLANTING BEDS	824.00	824.00
30	PLANTING BEDS	824.00	824.00
31	PLANTING BEDS	824.00	824.00
32	PLANTING BEDS	824.00	824.00
33	PLANTING BEDS	824.00	824.00
34	PLANTING BEDS	824.00	824.00
35	PLANTING BEDS	824.00	824.00
36	PLANTING BEDS	824.00	824.00
37	PLANTING BEDS	824.00	824.00
38	PLANTING BEDS	824.00	824.00
39	PLANTING BEDS	824.00	824.00
40	PLANTING BEDS	824.00	824.00
41	PLANTING BEDS	824.00	824.00
42	PLANTING BEDS	824.00	824.00
43	PLANTING BEDS	824.00	824.00
44	PLANTING BEDS	824.00	824.00
45	PLANTING BEDS	824.00	824.00
46	PLANTING BEDS	824.00	824.00
47	PLANTING BEDS	824.00	824.00
48	PLANTING BEDS	824.00	824.00
49	PLANTING BEDS	824.00	824.00
50	PLANTING BEDS	824.00	824.00
51	PLANTING BEDS	824.00	824.00
52	PLANTING BEDS	824.00	824.00
53	PLANTING BEDS	824.00	824.00
54	PLANTING BEDS	824.00	824.00
55	PLANTING BEDS	824.00	824.00
56	PLANTING BEDS	824.00	824.00
57	PLANTING BEDS	824.00	824.00
58	PLANTING BEDS	824.00	824.00
59	PLANTING BEDS	824.00	824.00
60	PLANTING BEDS	824.00	824.00
61	PLANTING BEDS	824.00	824.00
62	PLANTING BEDS	824.00	824.00
63	PLANTING BEDS	824.00	824.00
64	PLANTING BEDS	824.00	824.00
65	PLANTING BEDS	824.00	824.00
66	PLANTING BEDS	824.00	824.00
67	PLANTING BEDS	824.00	824.00
68	PLANTING BEDS	824.00	824.00
69	PLANTING BEDS	824.00	824.00
70	PLANTING BEDS	824.00	824.00

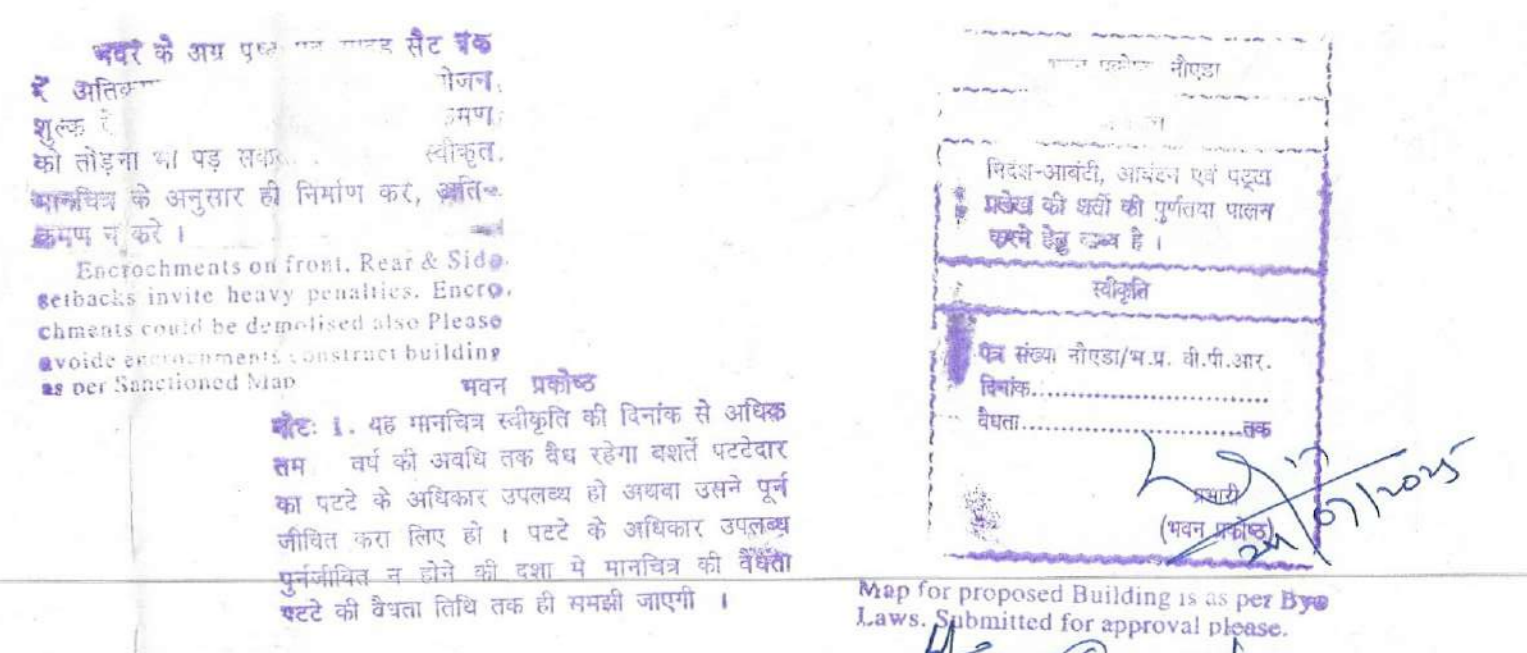


NOTE: Noida Master Plan 2031
5.30 COMMUNITY CENTRE
 PERMISSIBLE USES - COMMUNITY CENTRE / BARAT GHAR,
 SUPPORT FACILITIES- INDOOR GAMES, INDOOR GAMES, LIBRARY, RESTAURANT, VENDING BOOTH / KIOSK, GUEST ROOMS.

OWNER'S SIGN: For Expressway Hospitality Pvt. Ltd. Authorized Signatory
 ARCHITECT'S SIGN: [Signature]

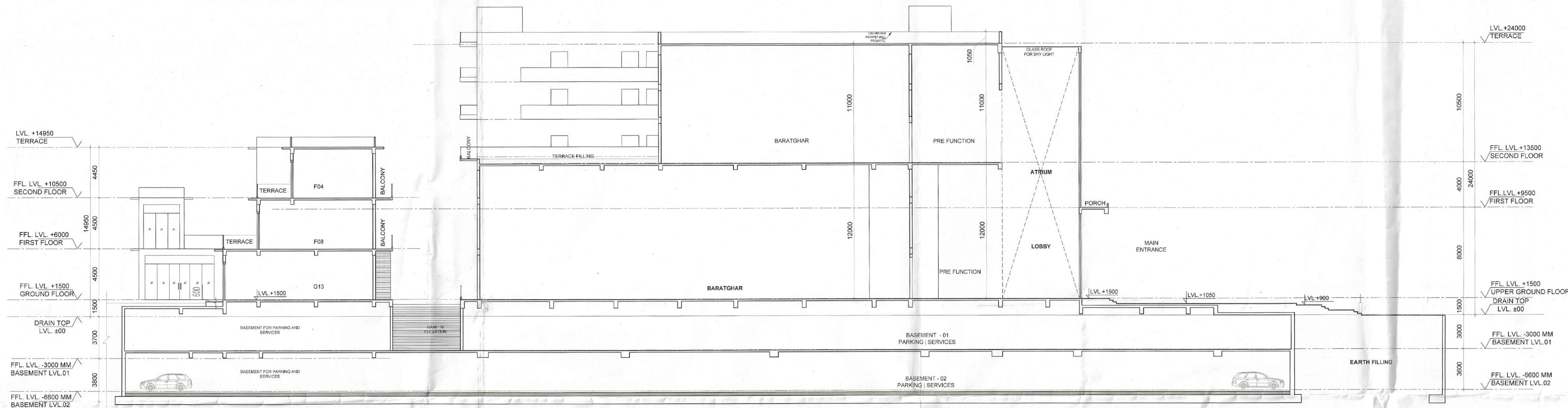
PROJECT: - PROPOSED BUILDING PLAN OF BARAT GHAR AT PLOT NO. - P-5c & P-5b, SECTOR-134 , NOIDA
 BEING DEVELOPED BY :- M/S EXPRESSWAY HOSPITALITY PRIVATE LIMITED
 TITLE: SITE PLAN, BASEMENT, ALL FLOOR PLANS & AREA DIAGRAM
 SCALE: 1:100
 DRG.NO. - 02



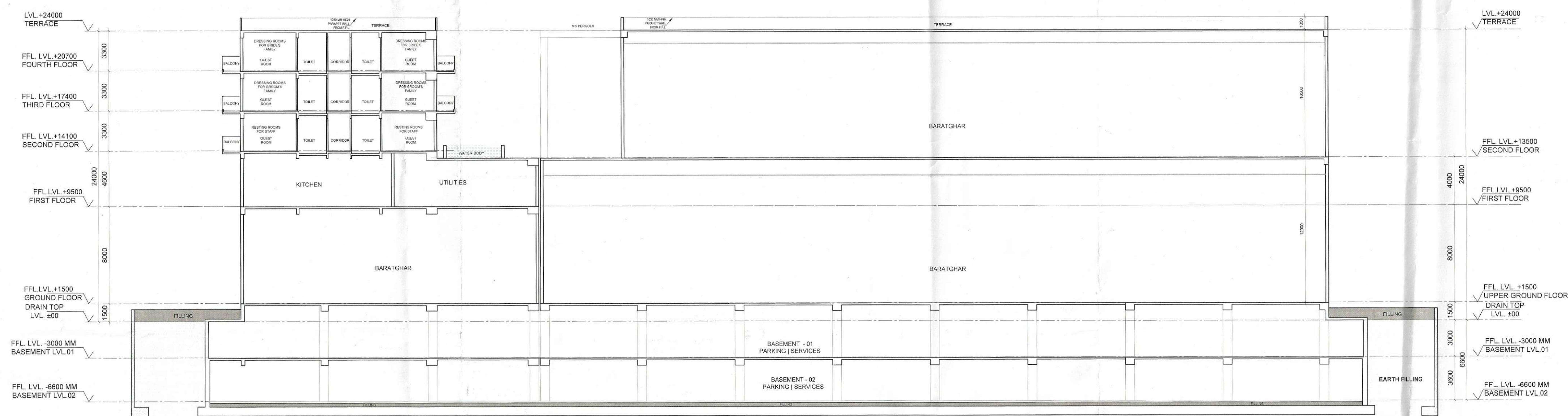


BANQUET HALL AREA CALCULATION						
GROUND FLOOR AREA CALCULATION						
WIDTH	LENGTH	NOS.	AREA (SQM)	REMARKS		
1	53.5	X	90.02	X	1	= 4816.070
TOTAL COVERED AREA						= 4816.070 (1)
DEDUCTIONS						
A1	6.77	X	55.19	X	1	= 373.636
ATRIUM AREA						= 373.636 (2)
SERVICES AREA						
FS1	4.300	X	6.765	X	1	= 29.090
S1	4.430	X	4.440	X	1	= 19.669
S2	2.830	X	7.225	X	1	= 20.447
TOTAL SERVICES AREA						= 69.205 (3)
GROUND FLOOR F.A.R. AREA = (1) - (2)+(3)						= 4373.228 SQM
FIRST FLOOR AREA CALCULATION						
WIDTH	LENGTH	NOS.	AREA (SQM)	REMARKS		
1	53.5	X	90.02	X	1	= 4816.070
TOTAL COVERED AREA						= 4816.070 (4)
DEDUCTIONS						
A1	6.77	X	55.19	X	1	= 373.636
ATRIUM AREA						= 373.636 (5)
DEDUCTIONS/CUTOUTS						
C1	39.54	X	64.74	X	1	= 2559.820
C2	6.5	X	55.19	X	1	= 358.735
C3	13.27	X	10.885	X	1	= 144.444
C4	8.74	X	3.7	X	1	= 32.338
TOTAL						= 3095.337 (6)
TOTAL AREA = (5 + 6)						= 3468.973 (7)
SERVICES						
FS1	4.300	X	6.765	X	1	= 29.090
S1	1.750	X	2.160	X	2	= 7.560
S2	2.025	X	1.875	X	2	= 7.594
S3	2.045	X	4.440	X	1	= 9.080
S4	1.500	X	0.600	X	1	= 0.900
S5	2.795	X	6.990	X	1	= 19.537
S6	1.750	X	1.975	X	1	= 3.456
S7	3.000	X	9.085	X	1	= 27.255
S8	4.740	X	0.600	X	1	= 2.844
S9	7.530	X	10.575	X	1	= 79.630
S10	32.010	X	12.170	X	1	= 389.562
TOTAL SERVICES AREA						= 576.507 (8)
FIRST FLOOR F.A.R. AREA = 4 - (7 + 8)						= 770.590 SQM
SECOND FLOOR AREA CALCULATION						
WIDTH	LENGTH	NOS.	AREA (SQM)	REMARKS		
1	35.96	X	57.375	X	1	= 2063.205
2	13.73	X	16.4	X	1	= 225.172
3	47.4	X	16.245	X	1	= 770.013
4	6.1	X	13.755	X	1	= 83.906
5	15.09	X	5.72	X	1	= 86.315
6	0.23	X	5.48	X	1	= 1.260
TOTAL COVERED AREA						= 3229.871 (9)
DEDUCTIONS						
A1	6.77	X	52.04	X	1	= 352.311
A2	3.87	X	3.15	X	1	= 12.191
TOTAL						= 364.501 (10)
DEDUCTIONS/CUTOUTS						
C2	8.065	X	9.533	X	1	= 76.884
C3	1.34	X	6.765	X	1	= 9.065
C4	2.105	X	1.120	X	1	= 2.358
TOTAL						= 88.306 (11)
TOTAL COVERED AREA = (10 + 11)						= 452.808 (12)
SERVICES						
FS1	4.300	X	6.765	X	1	= 29.090
S1	1.750	X	2.160	X	2	= 7.560
S2	2.025	X	1.875	X	2	= 7.594
S3	2.205	X	4.325	X	1	= 9.537
S4	1.500	X	0.600	X	1	= 0.900
S5	2.795	X	6.990	X	1	= 19.537
S6	1.750	X	1.975	X	1	= 3.456
S7	1.975	X	2.275	X	4	= 17.973
S8	4.740	X	0.600	X	1	= 2.844
S9	3.000	X	9.790	X	1	= 29.370
S10	1.000	X	0.485	X	10	= 4.850
TOTAL SERVICES AREA						= 132.710 (13)
SECOND FLOOR F.A.R. AREA = 9 - (12 + 13)						= 2644.353 SQM
THIRD FLOOR AREA CALCULATION						
WIDTH	LENGTH	NOS.	AREA (SQM)	REMARKS		
1	35.955	X	57.375	X	1	= 2062.918
2	13.73	X	16.4	X	1	= 225.172
3	47.4	X	16.245	X	1	= 770.013
4	6.1	X	13.755	X	1	= 83.906
TOTAL COVERED AREA						= 3142.009 (14)
DEDUCTIONS						
A1	6.77	X	55.19	X	1	= 373.636 (15)
DEDUCTIONS/CUTOUTS						
C1	22	X	56.94	X	1	= 1252.680
C2	6.5	X	55.19	X	1	= 358.735
C3	1.34	X	6.765	X	1	= 9.065
C4	13.27	X	10.905	X	1	= 144.709
C5	8.74	X	7.45	X	1	= 65.113
TOTAL						= 1830.302 (16)
TOTAL COVERED AREA = (15 + 16)						= 2203.939 (17)
SERVICES						
FS1	4.300	X	6.765	X	1	= 29.090
S1	1.750	X	2.160	X	2	= 7.560
S2	2.025	X	1.875	X	2	= 7.594
S3	2.205	X	4.325	X	1	= 9.537
S4	1.500	X	0.600	X	1	= 0.900
S5	2.795	X	6.990	X	1	= 19.537
S6	1.750	X	1.975	X	1	= 3.456
S7	1.000	X	0.485	X	10	= 4.850
TOTAL SERVICES AREA						= 82.523 (18)
THIRD FLOOR F.A.R. AREA = 14 - (17 + 18)						= 855.547 SQM
FOURTH FLOOR AREA CALCULATION						
WIDTH	LENGTH	NOS.	AREA (SQM)	REMARKS		
1	35.955	X	57.375	X	1	= 2062.918
2	13.73	X	16.4	X	1	= 225.172
3	47.4	X	16.245	X	1	= 770.013
4	6.1	X	13.755	X	1	= 83.906
TOTAL COVERED AREA						= 3142.009 (19)
DEDUCTIONS						
A1	6.77	X	55.19	X	1	= 373.636 (20)
DEDUCTIONS/CUTOUTS						
C1	22	X	56.94	X	1	= 1252.680
C2	6.5	X	55.19	X	1	= 358.735
C3	1.34	X	6.765	X	1	= 9.065
C4	13.27	X	10.905	X	1	= 144.709
C5	8.74	X	7.45	X	1	= 65.113
TOTAL						= 1830.302 (21)
TOTAL AREA = (20 + 21)						= 2203.939 (22)
SERVICES						
FS1	4.300	X	6.765	X	1	= 29.090
S1	1.750	X	2.160	X	2	= 7.560
S2	2.025	X	1.875	X	2	= 7.594
S3	2.205	X	4.325	X	1	= 9.537
S4	1.500	X	0.600	X	1	= 0.900
S5	2.795	X	6.990	X	1	= 19.537
S6	1.750	X	1.975	X	1	= 3.456
S7	1.000	X	0.485	X	10	= 4.850
TOTAL SERVICES AREA						= 82.523 (23)
FOURTH FLOOR F.A.R. AREA = 19 - (22 + 23)						= 855.547 SQM

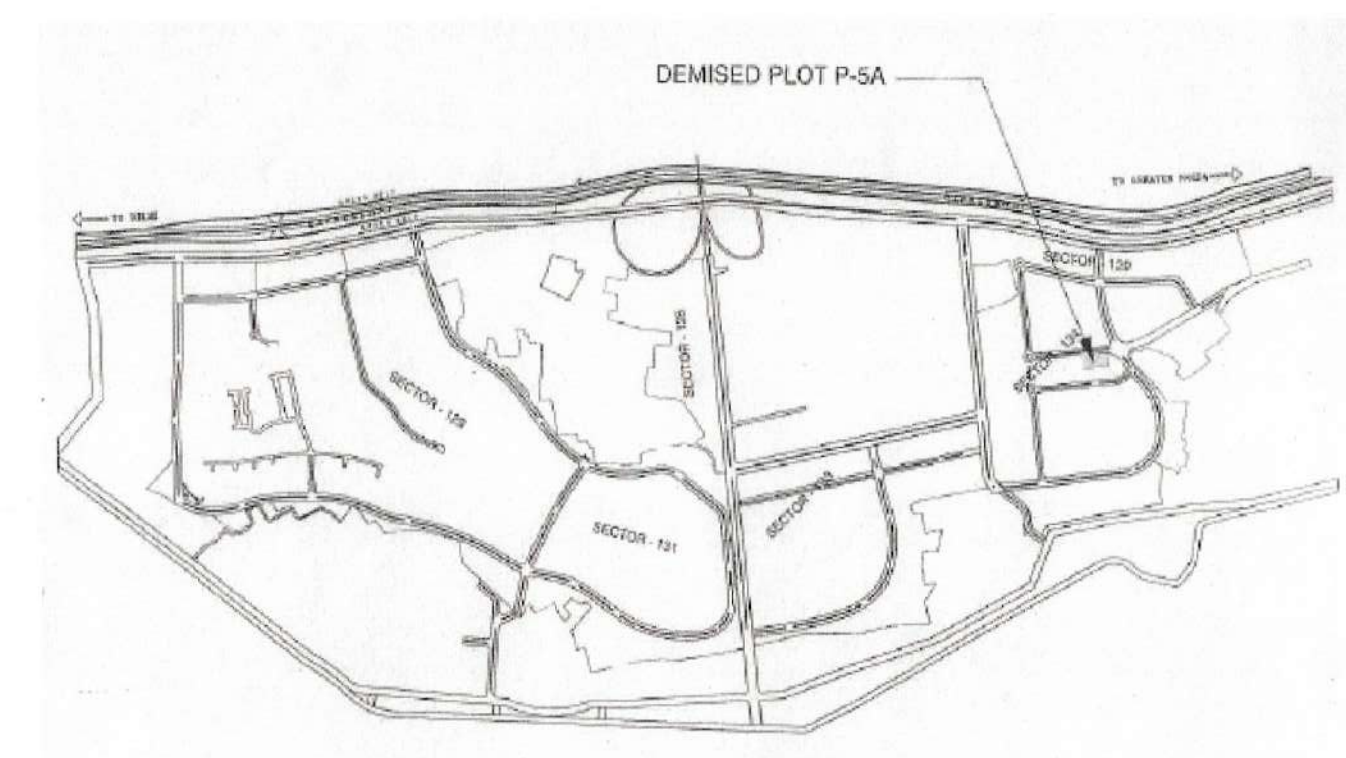
TERRACE FLOOR FAR AREA CALCULATION						
WIDTH	LENGTH	NOS.	AREA (SQM)	REMARKS		
1	27.22	X	0.5	X	1	= 13.610
2	4.995	X	0.6	X	4	= 11.988
TOTAL COVERED AREA						= 25.598 (19a)
OHT AREA CALCULATION (BANQUET HALL)						
WIDTH	LENGTH	NOS.	AREA (SQM)	REMARKS		
T1	4.76	X	7.775	X	1	= 37.009
T2	2.97	X	5.00	X	1	= 14.850
T3	4.76	X	5.24	X	1	= 24.942
T4	4.76	X	7.68	X	1	= 36.557
T5	5.27	X	7.23	X	1	= 38.076
T6	5.27	X	4.83	X	1	= 25.454
TOTAL						= 176.888
SUPPORT FACILITY AREA CALCULATION						
GROUND FLOOR AREA CALCULATION						
WIDTH	LENGTH	NOS.	AREA (SQM)	REMARKS		
1	7.445	X	7.315	X	2	= 108.920
2	13.500	X	93.100	X	1	= 1256.850
TOTAL COVERED AREA						= 1365.770 (24)
SERVICES						
S1	4.12	X	7.61	X	1	= 31.353
S2	2.155	X	2.665	X	2	= 11.486
TOTAL SERVICES AREA						= 42.839 (25)
CUT OUT						
C1	2.035	X	1.27	X	2	= 5.169
TOTAL CUT OUT AREA						= 5.169 (26)
GROUND FLOOR F.A.R. AREA = 24 - (25 + 26)						= 1317.762 SQM
1ST FLOOR AREA CALCULATION						
WIDTH	LENGTH	NOS.	AREA (SQM)	REMARKS		
1	4.000	X	7.315	X	2	= 58.520
2	10.500	X	78.700	X	1	= 826.350
TOTAL COVERED AREA						= 884.870 (27)
SERVICES						
S1	4.12	X	7.61	X	1	= 31.353
S2	2.155	X	2.665	X	2	= 11.486
S3	1.92	X	1.87	X	2	= 7.181
TOTAL SERVICES AREA						= 50.020 (28)
CUT OUT						
C1	2.035	X	1.27	X	2	= 5.169
TOTAL CUT OUT AREA						= 5.169 (29)
FIRST FLOOR F.A.R. AREA = 27 - (28 + 29)						= 829.681 SQM
2nd FLOOR AREA CALCULATION						
WIDTH	LENGTH	NOS.	AREA (SQM)	REMARKS		
1	10.500	X	7.255	X	2	= 152.355
2	4.345	X	3.235	X	2	= 28.112
3	7.500	X	10.915	X	2	= 163.725
TOTAL COVERED AREA						= 344.192 (30)
SERVICES						
S1	4.12	X	7.61	X	1	= 31.353
S2	2.155	X	2.665	X	2	= 11.486
S3	1.92	X	1.87	X	2	= 7.181
TOTAL SERVICES AREA						= 50.020 (31)
CUT OUT						
C1	2.035	X	1.27	X	2	= 5.169
TOTAL CUT OUT AREA						= 5.169 (32)
SECOND FLOOR F.A.R. AREA = 30 - (31 + 32)						= 289.003 SQM
BASEMENT FLOOR AREA CALCULATION FOR SUPPORT FACILITY						
WIDTH	LENGTH	NOS.	AREA (SQM)	REMARKS		
1	12.285	X	10.795	X	1	= 132.617
2	16.540	X	10.620	X	1	= 175.655
3	2.375	X	3.600	X	1	= 8.550
4	2.380	X	3.995	X	1	= 8.556
5	4.085	X	10.620	X	1	= 43.383
6	12.285	X	21.415	X	1	= 263.083
TOTAL COVERED AREA						= 631.843 (33)
SERVICES						
S1	4.12	X	7.605	X	1	= 31.333
S2	1.915	X	4.88	X	1	= 9.345
TOTAL SERVICES AREA						= 40.678 (34)
CUT OUT						
C1	2.035	X	1.27	X	2	= 5.169
TOTAL CUT OUT AREA						= 5.169 (34a)
BASEMENT FLOOR F.A.R. AREA = 33 - (34+34a)						= 585.997 SQM
TOTAL SUPPORT FACILITY FAR AREA =						3022.443 24.03
OHT AREA CALCULATION (SUPPORT FACILITY)						
WIDTH	LENGTH	NOS.	AREA (SQM)	REMARKS		
T1	3.045	X	2.935	X	2	= 17.874
TOTAL						= 17.874
NON FAR AREA DETAIL						
SUPPORT FACILITY - BALCONY AREA						
1ST Floor						
WIDTH	LENGTH	NOS.	AREA (SQM)	REMARKS		
N1	1.500	X	81.660	X	1	= 122.490
TOTAL NON FAR AREA = (36)						= 122.490 (36)
NON FAR AREA DETAIL - BANQUET HALL						
PORCH AREA - 1st FLOOR						
WIDTH	LENGTH	NOS.	AREA (SQM)	REMARKS		
P1	2.350	X	55.000	X	1	= 129.250
TOTAL						= 129.250 (36a)
2ND FLOOR - BALCONY						
WIDTH	LENGTH	NOS.	AREA (SQM)	REMARKS		
N1	33.900	X	1.500	X	1	= 50.850
N2	83.025	X	1.500	X	1	= 124.538
N3	8.725	X	1.500	X	1	= 13.088
TOTAL						= 188.475 (37)
THIRD FLOOR - BALCONY						
WIDTH	LENGTH	NOS.	AREA (SQM)	REMARKS		
N1	33.900	X	1.500	X	1	= 50.850
N2	33.670	X	1.500	X	1	= 50.505
N3	1.500	X	8.260	X	1	= 12.390
N4	4.600	X	1.500	X		



SECTION X-X'



SECTION Y-Y'



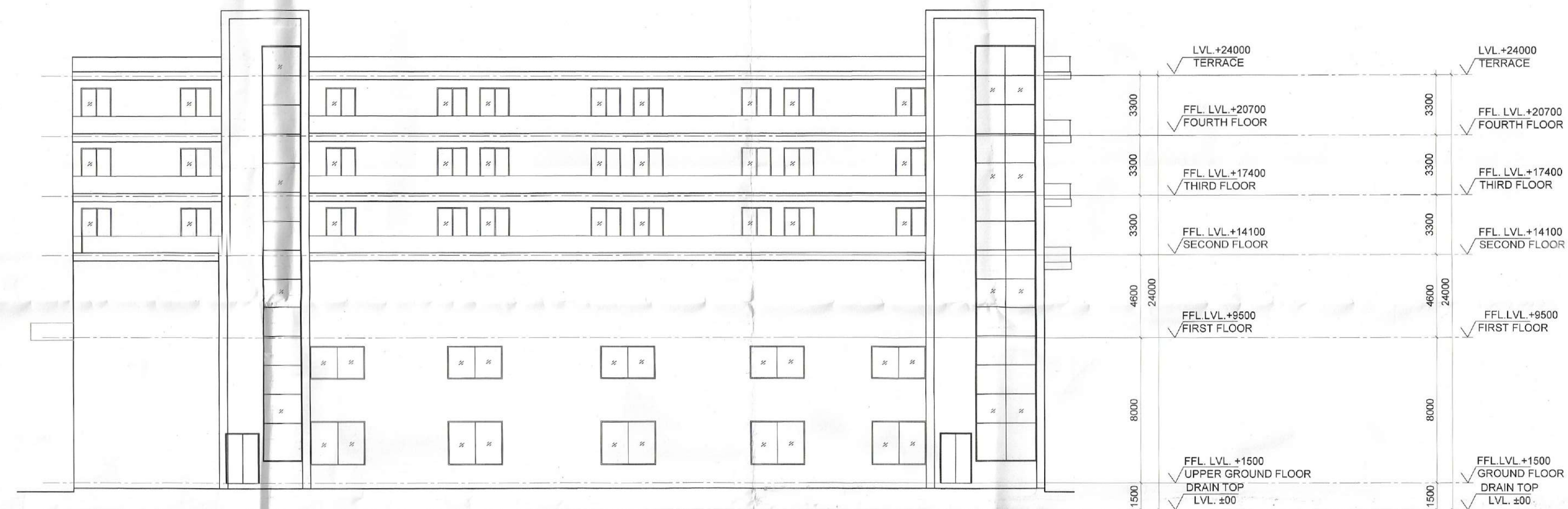
LOCATION PLAN

NOTE : NOIDA MASTER PLAN 2031
5.30 COMMUNITY CENTRE
PERMISSIBLE USES- COMMUNITY CENTRE / BARAT GHAR,

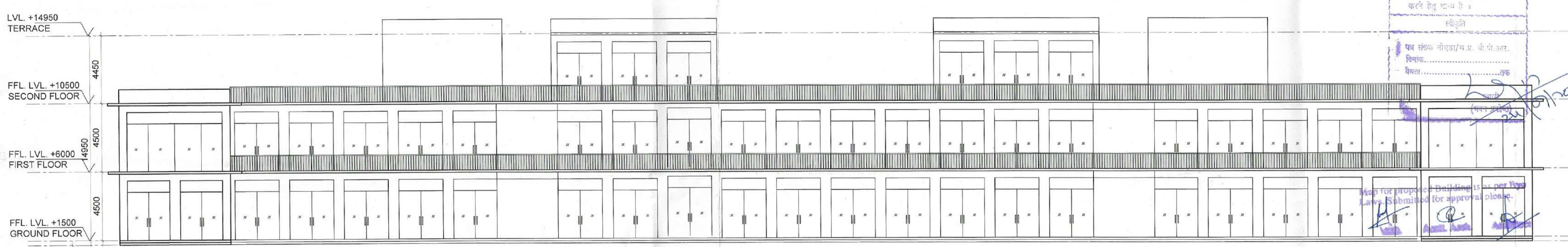
SUPPORT FACILITIES- INDOOR GAMES, INDOOR GAMES, LIBRARY, RESTAURANT, VENDING BOOTH / KIOSK, GUEST ROOMS.



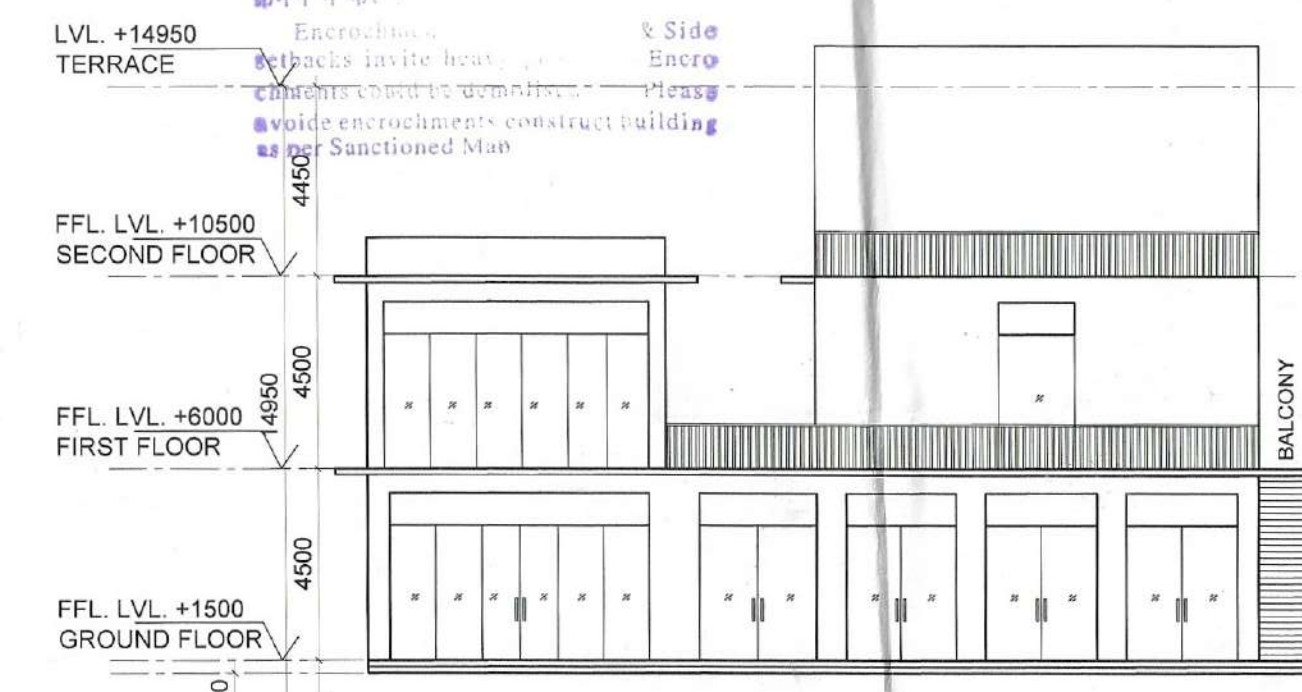
BANQUET HALL - FRONT ELEVATION



BANQUET HALL - SIDE ELEVATION



SUPPORT FACILITY - FRONT ELEVATION



SUPPORT FACILITY - SIDE ELEVATION

सर्व अधिकार सुरक्षित हैं।
 (1) यह नक्शा/चित्रण केवल के लिए है और इसे किसी भी प्रकार से प्रकाशित नहीं किया जा सकता है।
 (2) इस नक्शा/चित्रण में कोई भी त्रुटि या त्रुटिपूर्ण जानकारी हो सकती है।
 (3) इस नक्शा/चित्रण में किसी भी प्रकार का बदलाव बिना मालिक की अनुमति के नहीं किया जा सकता है।
 (4) इस नक्शा/चित्रण में किसी भी प्रकार का बदलाव बिना मालिक की अनुमति के नहीं किया जा सकता है।

 For Expressway Hospitality Pvt. Ltd. Authority's Signature	 RAJ SINGH ARCHITECT NEW DELHI
PROJECT:- PROPOSED BUILDING PLAN OF BARAT GHAR AT PLOT NO.:- P-5a & P-5b, SECTOR-134, NOIDA BEING DEVELOPED BY :- M/S EXPRESSWAY HOSPITALITY PRIVATE LIMITED	
TITLE ELEVATIONS & SECTIONS	
DEALT	
CHKD	SCALE 1:100 DRG.NO. -03