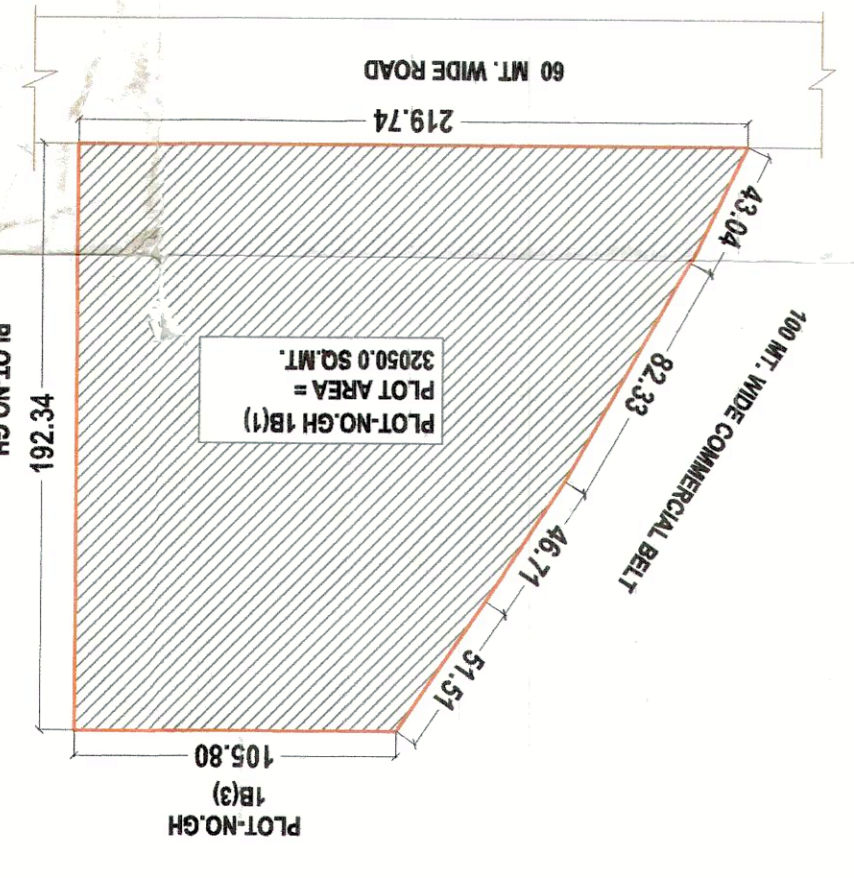


SITE PLAN  
 DRAWING TITLE: SECTOR - 4, VAISHALI GZB.  
 M/S SJP HOTEL RESORTS PVT. LTD.  
 ADD: - C-1, MAHALAKSHI METRO TOWER, SECTOR - 4, VAISHALI GZB.  
 BUILDERS & PROMOTER: M/S SJP HOTEL RESORTS PVT. LTD.  
 PROJECT: PROPOSED GROUP HOUSING AT PLOT NO. GH-01B (1), SECTOR-E-2, G. Noida.

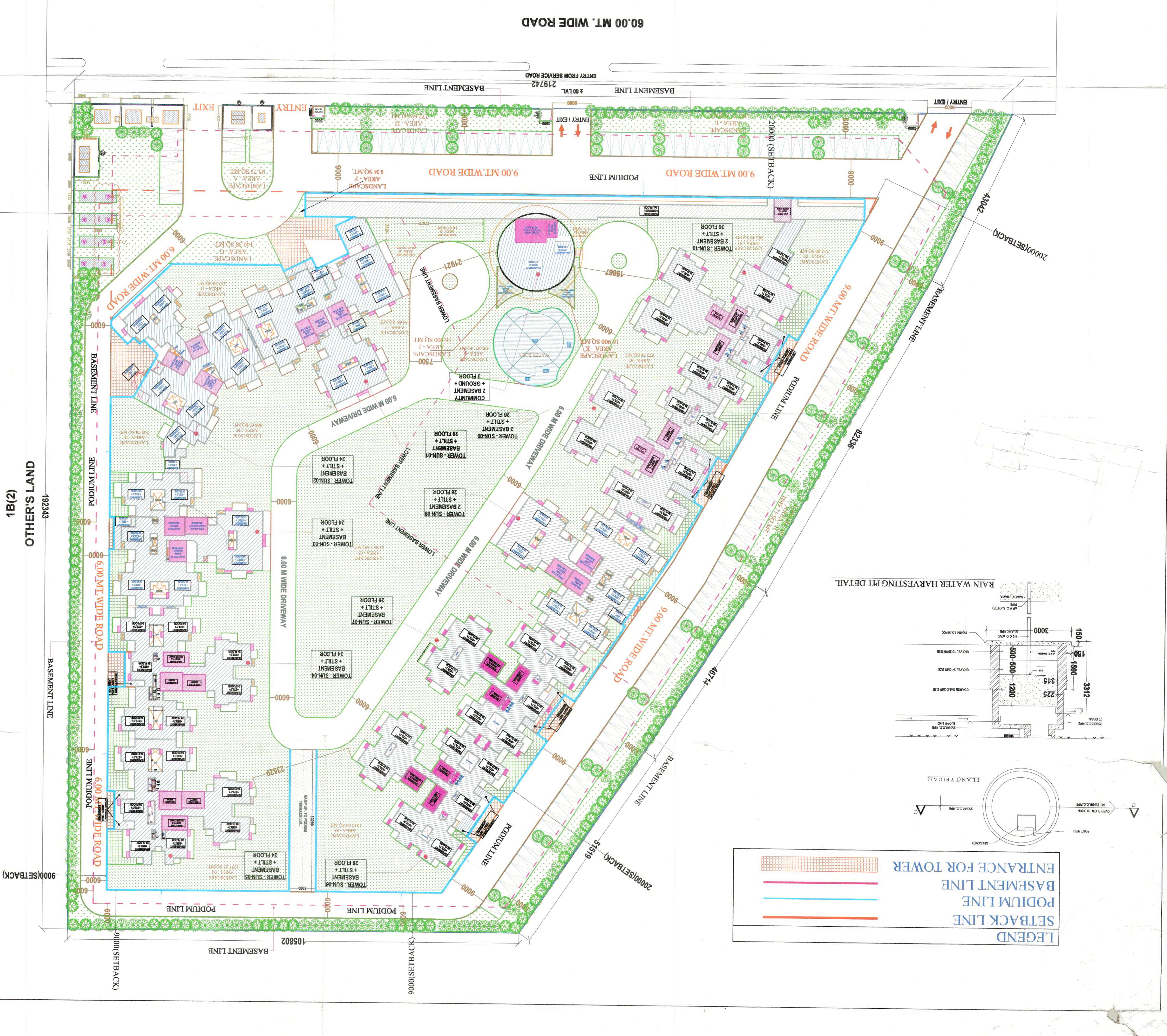
Sl. No.	Description	Area (Sq. Mt.)
1	PERMISSIBLE F.A.R. FOR HOUSING	32,050.00
2	PERMISSIBLE F.A.R. FOR COMMERCIAL	1,33,808.75
3	PERMISSIBLE F.A.R. FOR FACILITY	16,826.25
4	PERMISSIBLE F.A.R. FOR FACILITY	11,217.50
5	PERMISSIBLE F.A.R. FOR FACILITY	8,566.74
6	PERMISSIBLE F.A.R. FOR FACILITY	1,121.75
7	PERMISSIBLE F.A.R. FOR FACILITY	1,121.75
8	PERMISSIBLE F.A.R. FOR FACILITY	1,33,901.18
9	PERMISSIBLE F.A.R. FOR FACILITY	17,272.02
10	PERMISSIBLE F.A.R. FOR FACILITY	1,626.23
11	PERMISSIBLE F.A.R. FOR FACILITY	1,626.23
12	PERMISSIBLE F.A.R. FOR FACILITY	1,626.23
13	PERMISSIBLE F.A.R. FOR FACILITY	1,626.23
14	PERMISSIBLE F.A.R. FOR FACILITY	1,626.23
15	PERMISSIBLE F.A.R. FOR FACILITY	1,626.23
16	PERMISSIBLE F.A.R. FOR FACILITY	1,626.23
17	PERMISSIBLE F.A.R. FOR FACILITY	1,626.23
18	PERMISSIBLE F.A.R. FOR FACILITY	1,626.23
19	PERMISSIBLE F.A.R. FOR FACILITY	1,626.23
20	PERMISSIBLE F.A.R. FOR FACILITY	1,626.23
21	PERMISSIBLE F.A.R. FOR FACILITY	1,626.23
22	PERMISSIBLE F.A.R. FOR FACILITY	1,626.23
23	PERMISSIBLE F.A.R. FOR FACILITY	1,626.23
24	PERMISSIBLE F.A.R. FOR FACILITY	1,626.23
25	PERMISSIBLE F.A.R. FOR FACILITY	1,626.23
26	PERMISSIBLE F.A.R. FOR FACILITY	1,626.23
27	PERMISSIBLE F.A.R. FOR FACILITY	1,626.23
28	PERMISSIBLE F.A.R. FOR FACILITY	1,626.23
29	PERMISSIBLE F.A.R. FOR FACILITY	1,626.23
30	PERMISSIBLE F.A.R. FOR FACILITY	1,626.23
31	PERMISSIBLE F.A.R. FOR FACILITY	1,626.23
32	PERMISSIBLE F.A.R. FOR FACILITY	1,626.23
33	PERMISSIBLE F.A.R. FOR FACILITY	1,626.23
34	PERMISSIBLE F.A.R. FOR FACILITY	1,626.23
35	PERMISSIBLE F.A.R. FOR FACILITY	1,626.23
36	PERMISSIBLE F.A.R. FOR FACILITY	1,626.23
37	PERMISSIBLE F.A.R. FOR FACILITY	1,626.23
38	PERMISSIBLE F.A.R. FOR FACILITY	1,626.23
39	PERMISSIBLE F.A.R. FOR FACILITY	1,626.23
40	PERMISSIBLE F.A.R. FOR FACILITY	1,626.23
41	PERMISSIBLE F.A.R. FOR FACILITY	1,626.23
42	PERMISSIBLE F.A.R. FOR FACILITY	1,626.23
43	PERMISSIBLE F.A.R. FOR FACILITY	1,626.23
44	PERMISSIBLE F.A.R. FOR FACILITY	1,626.23
45	PERMISSIBLE F.A.R. FOR FACILITY	1,626.23
46	PERMISSIBLE F.A.R. FOR FACILITY	1,626.23
47	PERMISSIBLE F.A.R. FOR FACILITY	1,626.23
48	PERMISSIBLE F.A.R. FOR FACILITY	1,626.23
49	PERMISSIBLE F.A.R. FOR FACILITY	1,626.23
50	PERMISSIBLE F.A.R. FOR FACILITY	1,626.23



Sl. No.	Description	Area (Sq. Mt.)
1	LAGERSTROMIA	120 No.S.
2	FLORESIGNAE (EVER GREEN 50%)	120 No.S.
TOTAL = 240 No.S.		

Sl. No.	Description	Area (Sq. Mt.)
1	LAGERSTROMIA	120 No.S.
2	FLORESIGNAE (EVER GREEN 50%)	120 No.S.
TOTAL = 240 No.S.		

Sl. No.	Description	Area (Sq. Mt.)
1	LAGERSTROMIA	120 No.S.
2	FLORESIGNAE (EVER GREEN 50%)	120 No.S.
TOTAL = 240 No.S.		



Greater Noida Industrial Development Authority  
 REVALIDATION  
 Video Letter No. \_\_\_\_\_ Date: \_\_\_\_\_  
 Valid Upto Date: \_\_\_\_\_

