

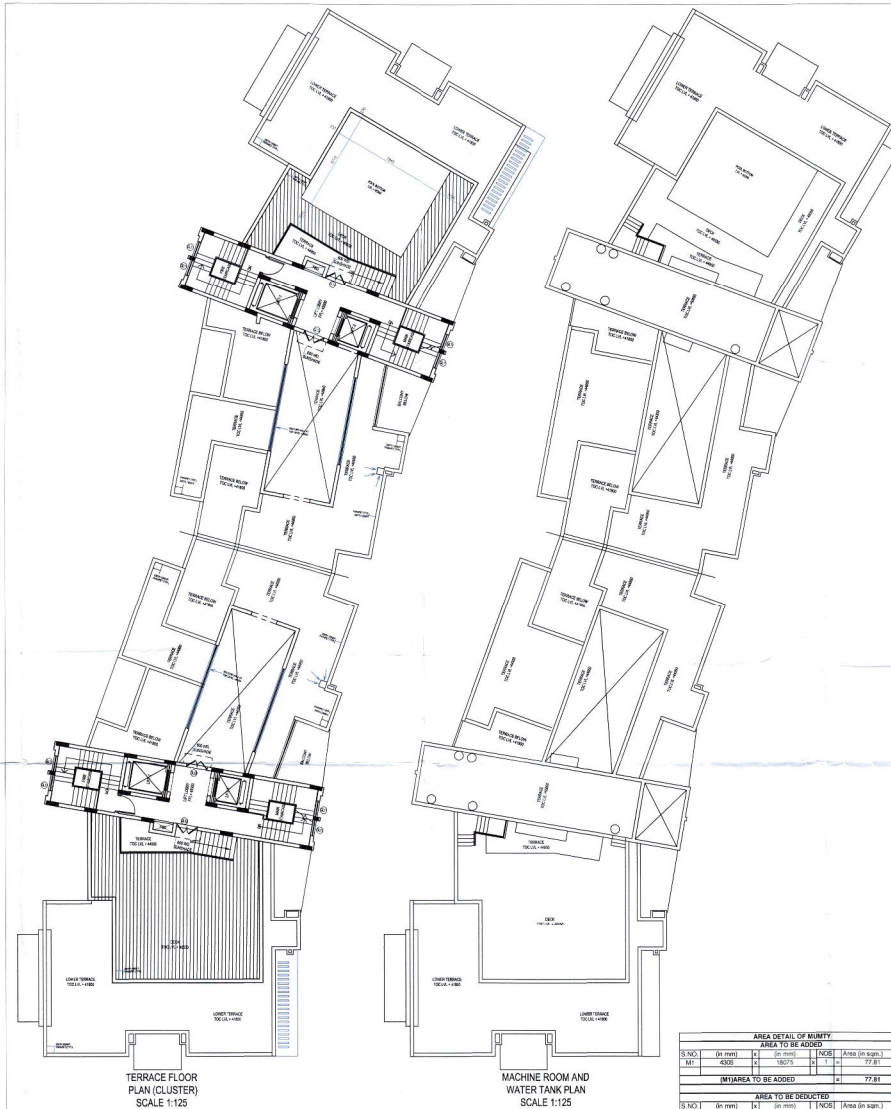
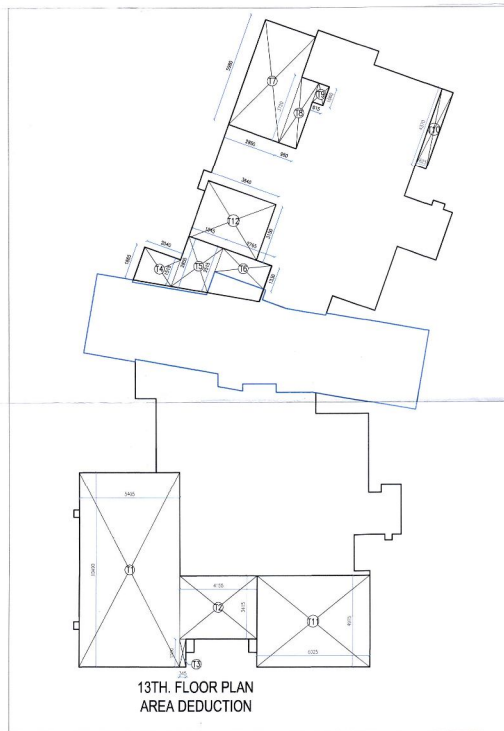
13TH. FLOOR PLAN



TERRACE FLOOR PLAN (CLUSTER)
SCALE 1:125

MACHINE ROOM AND
WATER TANK PLAN (CLUSTER)
SCALE 1:125

AREA DETAIL OF 13TH FLOOR				
AREA OF UNIT (TYPE-3)				
TOTAL FAR UNIT AREA (TYPE-3 TYPICAL FLOOR) =				
SUBTRACTION (11+12+13+14+15)				
= 83.72				
AREA TO BE DEDUCTED				
S.NO.	(in mm)	A	(in mm)	Area (in sqm.)
T1	5200	4	10400	41.60
T2	3850	4	15400	6.16
T3	3405	4	13620	5.37
T4	6025	4	24100	9.64
T5	5700	4	22800	9.12
T6	5700	4	22800	9.12
(TA) TOTAL AREA TO BE DEDUCTED =				
106.46				
AREA OF UNIT (TYPE-4)				
TOTAL FAR UNIT AREA (TYPE-4 TYPICAL FLOOR) =				
SUBTRACTION (16+17+18+19+20+21+22+23)				
= 104.96				
AREA TO BE DEDUCTED				
S.NO.	(in mm)	A	(in mm)	Area (in sqm.)
T1	4800	4	19200	7.68
T2	3850	4	15400	6.16
T3	3850	4	15400	6.16
T4	3850	4	15400	6.16
T5	3850	4	15400	6.16
T6	3850	4	15400	6.16
T7	3850	4	15400	6.16
T8	3850	4	15400	6.16
T9	3850	4	15400	6.16
T10	3850	4	15400	6.16
T11	3850	4	15400	6.16
T12	3850	4	15400	6.16
T13	3850	4	15400	6.16
T14	3850	4	15400	6.16
T15	3850	4	15400	6.16
T16	3850	4	15400	6.16
T17	3850	4	15400	6.16
T18	3850	4	15400	6.16
T19	3850	4	15400	6.16
T20	3850	4	15400	6.16
T21	3850	4	15400	6.16
T22	3850	4	15400	6.16
T23	3850	4	15400	6.16
T24	3850	4	15400	6.16
T25	3850	4	15400	6.16
T26	3850	4	15400	6.16
T27	3850	4	15400	6.16
T28	3850	4	15400	6.16
T29	3850	4	15400	6.16
T30	3850	4	15400	6.16
T31	3850	4	15400	6.16
T32	3850	4	15400	6.16
T33	3850	4	15400	6.16
T34	3850	4	15400	6.16
T35	3850	4	15400	6.16
T36	3850	4	15400	6.16
T37	3850	4	15400	6.16
T38	3850	4	15400	6.16
T39	3850	4	15400	6.16
T40	3850	4	15400	6.16
T41	3850	4	15400	6.16
T42	3850	4	15400	6.16
T43	3850	4	15400	6.16
T44	3850	4	15400	6.16
T45	3850	4	15400	6.16
T46	3850	4	15400	6.16
T47	3850	4	15400	6.16
T48	3850	4	15400	6.16
T49	3850	4	15400	6.16
T50	3850	4	15400	6.16
T51	3850	4	15400	6.16
T52	3850	4	15400	6.16
T53	3850	4	15400	6.16
T54	3850	4	15400	6.16
T55	3850	4	15400	6.16
T56	3850	4	15400	6.16
T57	3850	4	15400	6.16
T58	3850	4	15400	6.16
T59	3850	4	15400	6.16
T60	3850	4	15400	6.16
T61	3850	4	15400	6.16
T62	3850	4	15400	6.16
T63	3850	4	15400	6.16
T64	3850	4	15400	6.16
T65	3850	4	15400	6.16
T66	3850	4	15400	6.16
T67	3850	4	15400	6.16
T68	3850	4	15400	6.16
T69	3850	4	15400	6.16
T70	3850	4	15400	6.16
T71	3850	4	15400	6.16
T72	3850	4	15400	6.16
T73	3850	4	15400	6.16
T74	3850	4	15400	6.16
T75	3850	4	15400	6.16
T76	3850	4	15400	6.16
T77	3850	4	15400	6.16
T78	3850	4	15400	6.16
T79	3850	4	15400	6.16
T80	3850	4	15400	6.16
T81	3850	4	15400	6.16
T82	3850	4	15400	6.16
T83	3850	4	15400	6.16
T84	3850	4	15400	6.16
T85	3850	4	15400	6.16
T86	3850	4	15400	6.16
T87	3850	4	15400	6.16
T88	3850	4	15400	6.16
T89	3850	4	15400	6.16
T90	3850	4	15400	6.16
T91	3850	4	15400	6.16
T92	3850	4	15400	6.16
T93	3850	4	15400	6.16
T94	3850	4	15400	6.16
T95	3850	4	15400	6.16
T96	3850	4	15400	6.16
T97	3850	4	15400	6.16
T98	3850	4	15400	6.16
T99	3850	4	15400	6.16
T100	3850	4	15400	6.16
T101	3850	4	15400	6.16
T102	3850	4	15400	6.16
T103	3850	4	15400	6.16
T104	3850	4	15400	6.16
T105	3850	4	15400	6.16
T106	3850	4	15400	6.16
T107	3850	4	15400	6.16
T108	3850	4	15400	6.16
T109	3850	4	15400	6.16
T110	3850	4	15400	6.16
T111	3850	4	15400	6.16
T112	3850	4	15400	6.16
T113	3850	4	15400	6.16
T114	3850	4	15400	6.16
T115	3850	4	15400	6.16
T116	3850	4	15400	6.16
T117	3850	4	15400	6.16
T118	3850	4	15400	6.16
T119	3850	4	15400	6.16
T120	3850	4	15400	6.16
T121	3850	4	15400	6.16
T122	3850	4	15400	6.16
T123	3850	4	15400	6.16
T124	3850	4	15400	6.16
T125	3850	4	15400	6.16
T126	3850	4	15400	6.16
T127	3850	4	15400	6.16
T128	3850	4	15400	6.16
T129	3850	4	15400	6.16
T130	3850	4	15400	6.16
T131	3850	4	15400	6.16
T132	3850	4	15400	6.16
T133	3850	4	15400	6.16
T134	3850	4	15400	6.16
T135	3850	4	15400	6.16
T136	3850	4	15400	6.16
T137	3850	4	15400	6.16
T138	3850	4	15400	6.16
T139	3850	4	15400	6.16
T140	3850	4	15400	6.16
T141	3850	4	15400	6.16
T142	3850	4	15400	6.16
T143	3850	4	15400	6.16
T144	3850	4	15400	6.16
T145	3850	4	15400	6.16
T146	3850	4	15400	6.16
T147	3850	4	15400	6.16
T148	3850	4	15400	6.16
T149	3850	4	15400	6.16
T150	3850	4	15400	6.16
T151	3850	4	15400	6.16
T152	3850	4	15400	6.16
T153	3850	4	15400	6.16
T154	3850	4	15400	6.16
T155	3850	4	15400	6.16
T156	3850	4	15400	6.16
T157	3850	4	15400	6.16
T158	3850	4	15400	6.16
T159	3850	4	15400	6.16
T160	3850	4	15400	6.16
T161	3850	4	15400	6.16
T162	3850	4	15400	6.16
T163	3850	4	15400	6.16
T164	3850	4	15400	6.16
T165	3850	4	15400	6.16
T166	3850	4	15400	6.16
T167	3850	4	15400	6.16
T168	3850	4	15400	6.16
T169	3850	4	15400	6.16
T170	3850	4	15400	6.16
T171	3850	4	15400	6.16
T172	3850	4	15400	6.16
T173	3850	4	15400	6.16
T174	3850	4	15400	6.16
T175	3850	4	15400	6.16
T176	3850	4	15400	6.16
T177	3850	4	15400	6.16
T178	3850	4	15400	6.16
T179	3850	4	15400	6.16
T180	3850	4	15400	6.16
T181	3850	4	15400	6.16
T182	3850	4	15400	6.16
T183	3850	4	15400	6.16
T184	3850	4	15400	6.16
T185	3850	4	15400	6.16
T186	3850	4	15400	6.16
T187	3850	4	15400	6.16
T188	3850	4	15400	6.16
T189	3850	4	15400	6.16
T190	3850	4	15400	6.16
T191	3850	4	15400	6.16
T192	3850	4	15400	6.16
T193	3850	4	15400	6.16
T194	3850	4	15400	6.16
T195	3850	4	15400	6.16
T196	3850	4	15400	6.16
T197	3850	4	15400	6.16
T198	3850	4	15400	6.16
T199	3850	4	15400	6.16
T200	3850	4	15400	6.16
T201	3850	4	15400	6.16
T202	3850	4	15400	6.16
T203	3850	4	15400	6.16
T204	3850	4	15400	6.16
T205	3850	4	15400	6.16
T206	3850	4	15400	6.16
T207	3850	4	15400	6.16
T208	3850	4	15400	6.16
T209	3850	4	15400	6.16
T210	3850	4	15400	6.16
T211	3850	4	15400	6.16
T212	3850	4	15400	6.16
T213	3850	4	15400	6.16
T214	3850	4	15400	6.16
T215	3850	4	15400	6.16
T216	3850	4	15400	6.16
T217	3850	4	15400	6.16
T218	3850	4	15400	6.16
T219	3850	4	15400	6.16
T220	3850	4	15400	6.16
T221	3850	4	15400	6.16
T222	3850	4	15400	6.16
T223	3850	4	15400	6.16
T224	3850	4	15400	6.16
T225	3850	4	15400	6.16
T226	3850	4	15400	6.16
T227	3850	4	15400	6.16
T228	3850	4	15400	6.16
T229	3850	4	15400	6.16
T230	3850	4	15400	6.16
T231	3850	4	15400	6.16
T232	3850	4	15400	6.16
T233	3850	4	15400	6.16
T234	3850	4	15400	6.16
T235	3850	4	15400	6.16
T236	3850	4	15400	6.16
T237	3850	4	15400	6.16
T238	3850	4	15400	6.16
T239	3850	4	15400	6.16
T240	3850	4	15400	6.16
T241	3850	4	15400	6.16
T242	3850	4	15400	6.16
T243	3850	4	15400	6.16
T244	3850	4	15400	6.16
T245	3850	4	15400	6.16
T246	3850	4	15400	6.16
T247	3850	4	15400	6.16
T248	3850	4	15400	6.16
T249	3850	4	15400	6.16
T250	3850	4	15400	6.16
T251	3850	4	15400	6.16
T252	3850	4	15400	6.16
T253	3850	4	15400	6.16
T254	3850	4	15400	6.16
T255	3850	4	15400	6.16
T256	3850	4	15400	6.16
T257	3850	4	15400	6.16
T258	3850	4		



AREA OF TOTAL 1ST FLOOR AREA OF DET (T1B-T1C)						
TOTAL FAR AREA UNIT TYPE 1ST FLOOR =						
FAR AREA UNIT TYPE 1ST FLOOR =						10.96
DEDUCTION (T1A-T1B-T1C)=						
TOTAL AREA TO BE DEDUCTED =						
S. NO.	1	2	3	4	5	6
14	1800-15-15	1	1000	1	1	1
15	1800-15-15	1	1000	1	1	1
16	1800-15-15	1	1000	1	1	1
17	1800-15-15	1	1000	1	1	1
18	1800-15-15	1	1000	1	1	1
19	1800-15-15	1	1000	1	1	1
20	1800-15-15	1	1000	1	1	1
21	1800-15-15	1	1000	1	1	1
22	1800-15-15	1	1000	1	1	1
23	1800-15-15	1	1000	1	1	1
24	1800-15-15	1	1000	1	1	1
25	1800-15-15	1	1000	1	1	1
26	1800-15-15	1	1000	1	1	1
27	1800-15-15	1	1000	1	1	1
28	1800-15-15	1	1000	1	1	1
29	1800-15-15	1	1000	1	1	1
30	1800-15-15	1	1000	1	1	1
31	1800-15-15	1	1000	1	1	1
32	1800-15-15	1	1000	1	1	1
33	1800-15-15	1	1000	1	1	1
34	1800-15-15	1	1000	1	1	1
35	1800-15-15	1	1000	1	1	1
36	1800-15-15	1	1000	1	1	1
37	1800-15-15	1	1000	1	1	1
38	1800-15-15	1	1000	1	1	1
39	1800-15-15	1	1000	1	1	1
40	1800-15-15	1	1000	1	1	1
41	1800-15-15	1	1000	1	1	1
42	1800-15-15	1	1000	1	1	1
43	1800-15-15	1	1000	1	1	1
44	1800-15-15	1	1000	1	1	1
45	1800-15-15	1	1000	1	1	1
46	1800-15-15	1	1000	1	1	1
47	1800-15-15	1	1000	1	1	1
48	1800-15-15	1	1000	1	1	1
49	1800-15-15	1	1000	1	1	1
50	1800-15-15	1	1000	1	1	1
51	1800-15-15	1	1000	1	1	1
52	1800-15-15	1	1000	1	1	1
53	1800-15-15	1	1000	1	1	1
54	1800-15-15	1	1000	1	1	1
55	1800-15-15	1	1000	1	1	1
56	1800-15-15	1	1000	1	1	1
57	1800-15-15	1	1000	1	1	1
58	1800-15-15	1	1000	1	1	1
59	1800-15-15	1	1000	1	1	1
60	1800-15-15	1	1000	1	1	1
61	1800-15-15	1	1000	1	1	1
62	1800-15-15	1	1000	1	1	1
63	1800-15-15	1	1000	1	1	1
64	1800-15-15	1	1000	1	1	1
65	1800-15-15	1	1000	1	1	1
66	1800-15-15	1	1000	1	1	1
67	1800-15-15	1	1000	1	1	1
68	1800-15-15	1	1000	1	1	1
69	1800-15-15	1	1000	1	1	1
70	1800-15-15	1	1000	1	1	1
71	1800-15-15	1	1000	1	1	1
72	1800-15-15	1	1000	1	1	1
73	1800-15-15	1	1000	1	1	1
74	1800-15-15	1	1000	1	1	1
75	1800-15-15	1	1000	1	1	1
76	1800-15-15	1	1000	1	1	1
77	1800-15-15	1	1000	1	1	1
78	1800-15-15	1	1000	1	1	1
79	1800-15-15	1	1000	1	1	1
80	1800-15-15	1	1000	1	1	1
81	1800-15-15	1	1000	1	1	1
82	1800-15-15	1	1000	1	1	1
83	1800-15-15	1	1000	1	1	1
84	1800-15-15	1	1000	1	1	1
85	1800-15-15	1	1000	1	1	1
86	1800-15-15	1	1000	1	1	1
87	1800-15-15	1	1000	1	1	1
88	1800-15-15	1	1000	1	1	1
89	1800-15-15	1	1000	1	1	1
90	1800-15-15	1	1000	1	1	1
91	1800-15-15	1	1000	1	1	1
92	1800-15-15	1	1000	1	1	1
93	1800-15-15	1	1000	1	1	1
94	1800-15-15	1	1000	1	1	1
95	1800-15-15	1	1000	1	1	1
96	1800-15-15	1	1000	1	1	1
97	1800-15-15	1	1000	1	1	1
98	1800-15-15	1	1000	1	1	1
99	1800-15-15	1	1000	1	1	1
100	1800-15-15	1	1000	1	1	1
TOTAL DEDUCTION (T1B-T1C) =						
						18.49

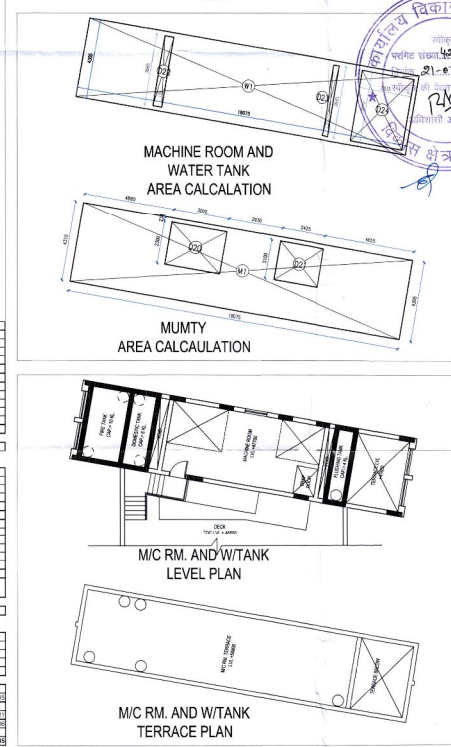
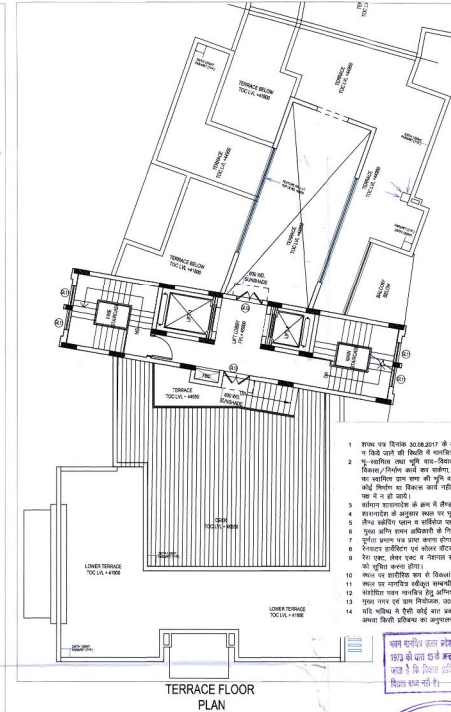
BALCONY FAR AREA TO BE DEDUCT FROM TYPICAL TO GET 1STH FLOOR AREA						
S. NO.	1	2	3	4	5	6
1	1800-15-15	1	1000	1	1	1
2	1800-15-15	1	1000	1	1	1
3	1800-15-15	1	1000	1	1	1
4	1800-15-15	1	1000	1	1	1
5	1800-15-15	1	1000	1	1	1
6	1800-15-15	1	1000	1	1	1
7	1800-15-15	1	1000	1	1	1
8	1800-15-15	1	1000	1	1	1
9	1800-15-15	1	1000	1	1	1
10	1800-15-15	1	1000	1	1	1
11	1800-15-15	1	1000	1	1	1
12	1800-15-15	1	1000	1	1	1
13	1800-15-15	1	1000	1	1	1
14	1800-15-15	1	1000	1	1	1
15	1800-15-15	1	1000	1	1	1
16	1800-15-15	1	1000	1	1	1
17	1800-15-15	1	1000	1	1	1
18	1800-15-15	1	1000	1	1	1
19	1800-15-15	1	1000	1	1	1
20	1800-15-15	1	1000	1	1	1
21	1800-15-15	1	1000	1	1	1
22	1800-15-15	1	1000	1	1	1
23	1800-15-15	1	1000	1	1	1
24	1800-15-15	1	1000	1	1	1
25	1800-15-15	1	1000	1	1	1
26	1800-15-15	1	1000	1	1	1
27	1800-15-15	1	1000	1	1	1
28	1800-15-15	1	1000	1	1	1
29	1800-15-15	1	1000	1	1	1
30	1800-15-15	1	1000	1	1	1
31	1800-15-15	1	1000	1	1	1
32	1800-15-15	1	1000	1	1	1
33	1800-15-15	1	1000	1	1	1
34	1800-15-15	1	1000	1	1	1
35	1800-15-15	1	1000	1	1	1
36	1800-15-15	1	1000	1	1	1
37	1800-15-15	1	1000	1	1	1
38	1800-15-15	1	1000	1	1	1
39	1800-15-15	1	1000	1	1	1
40	1800-15-15	1	1000	1	1	1
41	1800-15-15	1	1000	1	1	1
42	1800-15-15	1	1000	1	1	1
43	1800-15-15	1	1000	1	1	1
44	1800-15-15	1	1000	1	1	1
45	1800-15-15	1	1000	1	1	1
46	1800-15-15	1	1000	1	1	1
47	1800-15-15	1	1000	1	1	1
48	1800-15-15	1	1000	1	1	1
49	1800-15-15	1	1000	1	1	1
50	1800-15-15	1	1000	1	1	1
51	1800-15-15	1	1000	1	1	1
52	1800-15-15	1	1000	1	1	1
53	1800-15-15	1	1000	1	1	1
54	1800-15-15	1	1000	1	1	1
55	1800-15-15	1	1000	1	1	1
56	1800-15-15	1	1000	1	1	1
57	1800-15-15	1	1000	1	1	1
58	1800-15-15	1	1000	1	1	1
59	1800-15-15	1	1000	1	1	1
60	1800-15-15	1	1000	1	1	1
61	1800-15-15	1	1000	1	1	1
62	1800-15-15	1	1000	1	1	1
63	1800-15-15	1	1000	1	1	1
64	1800-15-15	1	1000	1	1	1
65	1800-15-15	1	1000	1	1	1
66	1800-15-15	1	1000	1	1	1
67	1800-15-15	1	1000	1	1	1
68	1800-15-15	1	1000	1	1	1
69	1800-15-15	1	1000	1	1	1
70	1800-15-15	1	1000	1	1	1
71	1800-15-15	1	1000	1	1	1
72	1800-15-15	1	1000	1	1	1
73	1800-15-15	1	1000	1	1	1
74	1800-15-15	1	1000	1	1	1
75	1800-15-15	1	1000	1	1	1
76	1800-15-15	1	1000	1	1	1
77	1800-15-15	1	1000	1	1	1
78	1800-15-15	1	1000	1	1	1
79	1800-15-15	1	1000	1	1	1
80	1800-15-15	1	1000	1	1	1
81	1800-15-15	1	1000	1	1	1
82	1800-15-15	1	1000	1	1	1
83	1800-15-15	1	1000	1	1	1
84	1800-15-15	1	1000	1	1	1
85	1800-15-15	1	1000	1	1	1
86	1800-15-15	1	1000	1	1	1
87	1800-15-15	1	1000	1	1	1
88	1800-15-15	1	1000	1	1	1
89	1800-15-15	1	1000	1	1	1
90	1800-15-15	1	1000	1	1	1
91	1800-15-15	1	1000	1	1	1
92	1800-15-15	1	1000	1	1	1
93	1800-15-15	1	1000	1	1	1
94	1800-15-15	1	1000	1	1	1
95	1800-15-15	1	1000	1	1	1
96	1800-15-15	1	1000	1	1	1
97	1800-15-15	1	1000	1	1	1
98	1800-15-15	1	1000	1	1	1
99	1800-15-15	1	1000	1	1	1
100	1800-15-15	1	1000	1	1	1
TOTAL FAR AREA - TYPICAL FLOOR FAR AREA - (T1B-T1C)=						
						28.21

DOOR-WINDOW SCHEDULE					
TYPE	WIND	DOOR	[LVL]	CLVL	REMARKS
THIRER FLOOR					
D2	850	2400	2400	-	TOILET & STORE
D3	850	2400	2400	-	KITCHEN
D4	700	2400	2400	-	BEDROOM
D5	700	2400	2400	-	BATH
D6	850	2400	2400	-	MAID'S ROOM
TO					
T0	110	2400	2400	-	FIRE STAIRCASE
UPPER FLOOR					
GL1	2400	2550	2550	10.0	STAIRCASE
GL2	1000	2400	2400	10.0	STAIRCASE
GL3	1000	2400	2400	10.0	DINING
GL4	1000	2400	2400	10.0	BEDROOM
GL5	1000	2400	2400	10.0	BEDROOM
GL6	1000	2400	2400	10.0	BEDROOM
GL7	1000	2400	2400	10.0	BEDROOM
GL8	1000	2400	2400	10.0	BEDROOM
GL9	1000	2400	2400	10.0	BEDROOM & MAID'S ROOM
GL10	1000	2400	2400	10.0	KITCHEN
GL11	1000	2400	2400	10.0	BEDROOM
GL12	1000	2400	2400	10.0	ENTRANCE
GL13	1000	2400	2400	10.0	STAIRCASE
GL14	1000	2400	2400	10.0	LIVING
V					
V1	650	1900	2400	10.0	TOILET
V2	595	1900	2400	10.0	TOILET
V3	170	1900	2400	10.0	TOILET

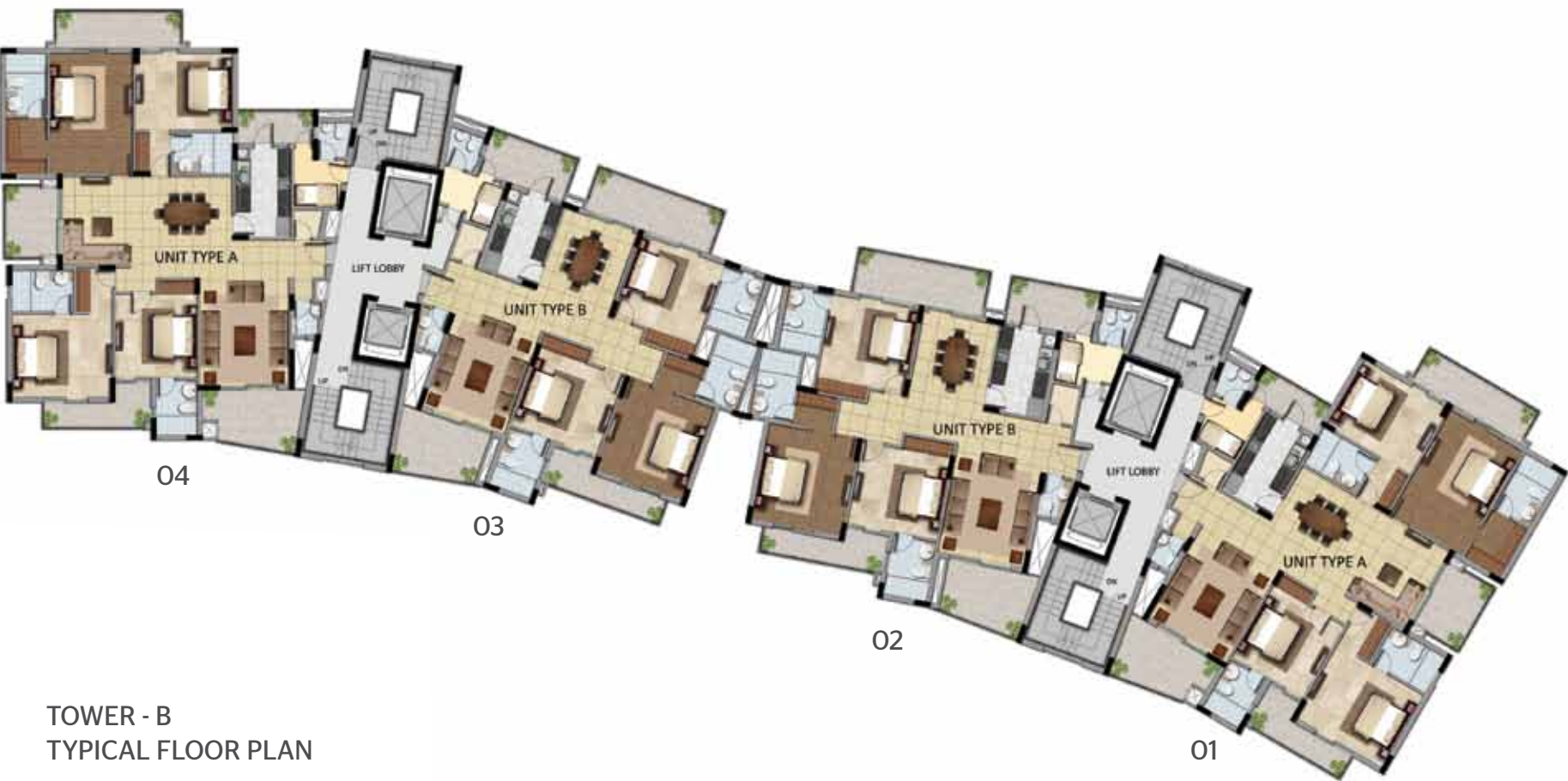
AREA DETAIL OF MUMITY						
AREA TO BE ADDED						
S.NO.	(in mm)	x	(in mm)	NOS	Area (in sq.m.)	
M1	4303	x	18075	x	1	77.81
(M1)AREA TO BE ADDED					a	77.81
AREA TO BE DEDUCTED						
S.NO.	(in mm)	x	(in mm)	NOS	Area (in sq.m.)	
DSD	3000	x	2300	x	1	6.90
DPI	2425	x	2700	x	1	6.59
(Y1) AREA TO BE DEDUCTED					a	11.99

AREA DETAIL OF MACHINE ROOM AND WATER TANK						
ARE TO BE ADDED						
S. NO.	(sq.mts)	x	(sq.mts)	x	NO.	Area (sq.mts)
W1	18075	x	4306	x	1	77.81
(IN) AREA TO BE ADDED						77.81
AREA TO BE DEDUCTED						
S. NO.	(sq.mts)	x	(sq.mts)	x	NO.	Area (sq.mts)
D02	465	x	3845	x	1	1.86
D03	210	x	3845	x	1	0.81
D04	2835	x	3845	x	1	10.90
(Y2) AREA TO BE DEDUCTED						13.57
(N) TOTAL F.A.R FOR MACHINE ROOM & WATER TANK						
= (N1 - Y2)						64.24

AREA DETAIL OF FIRE ESCAPE STAIRCASE				
S.NO.	(in mm)	(in mm)	NOS	Area (in sq.m.)
D3	4400	x	3645	x 1 = 16.92
FIRE ESCAPE AREA				= 16.92
MUNITY AND MACHINE ROOM				
TOTAL TERRACE AREA		=		421.0
PERMISSIBLE AREA FOR MUNITY AND MACHINE ROOM @ 20%		=		84.2
OF TOTAL TERRACE AREA OF		=		130.8
PROPOSED AREA FOR MUNITY AND MACHINE ROOM		=		130.8
ADDITIONAL AREA PROPOSED (P-Q)		=		48.8

[illegible]

FLOOR PLANS



TYPICAL FLOOR PLAN
4 BHK - Tower B (Type 01 & 04)

	AREA - IN SQ. FT	AREA - IN SQ. MTR
SUPER BUILT - UP AREA	2,700.00	250.93
CARPET AREA + BALCONY	2,347.29	218.15
CARPET AREA	1919.05	178.35



FLOOR PLANS



TYPICAL FLOOR PLAN
3 BHK - Tower A & B (Type 02 & 03)

	AREA - IN SQ. FT	AREA - IN SQ. MTR
SUPER BUILT - UP AREA	2,200.00	204.46
CARPET AREA + BALCONY	1954.66	181.66
CARPET AREA	1541.37	143.25



FLOOR PLANS



TYPICAL FLOOR PLAN
4 BHK PRIME - Tower A (Type 01 & 04)

	AREA - IN SQ. FT	AREA - IN SQ. MTR
SUPER BUILT - UP AREA	2,900.00	269.52
CARPET AREA + BALCONY	2,536.24	235.71
CARPET AREA	2,098.63	195.04

