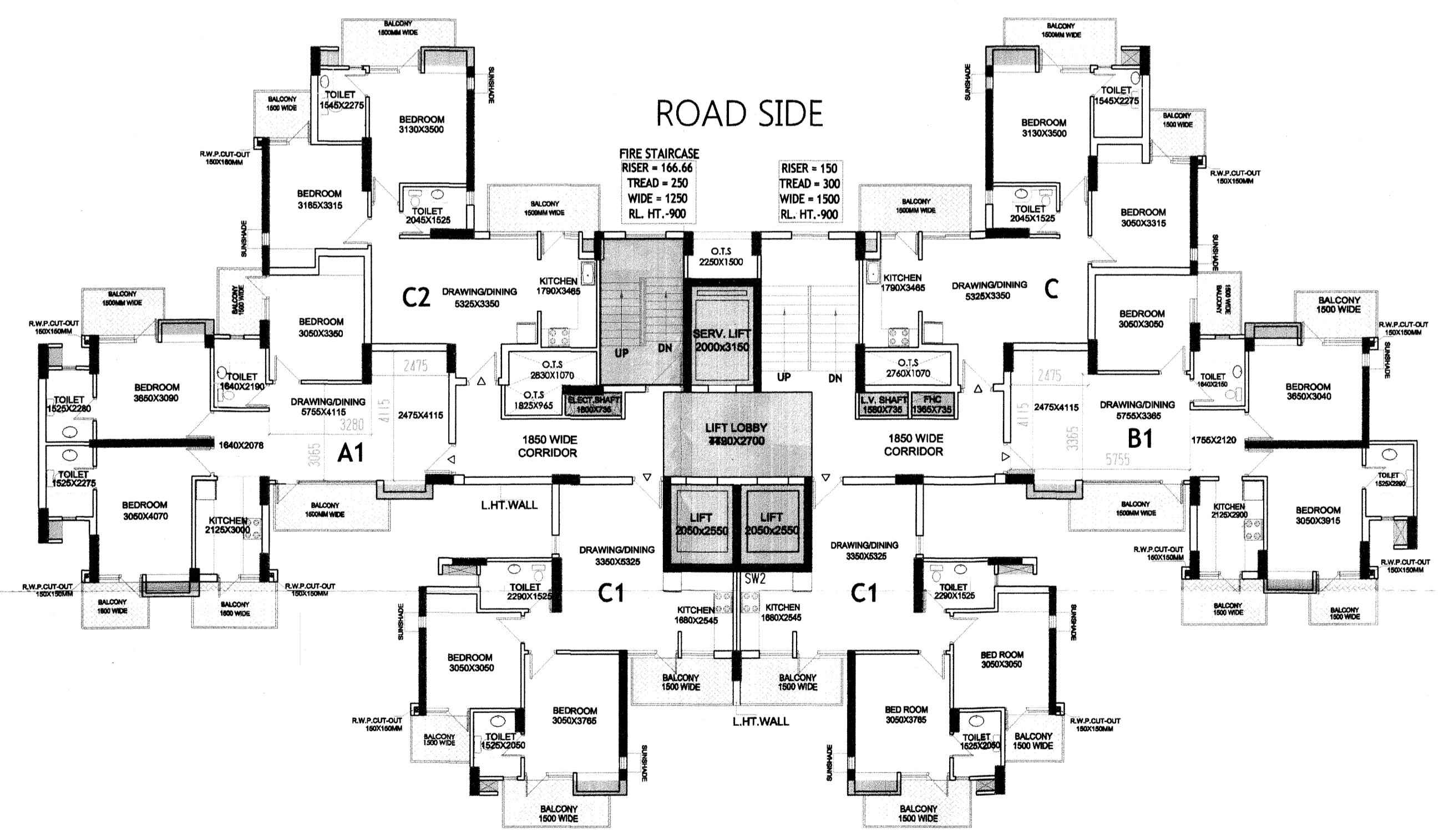


ENVELOPE PLAN



COURTYARD SIDE
 2nd FLOOR TO
 22st FLOOR PLAN
 TOWER-2

IDENTICAL TOWERS
 FLOOR PLANS (TOWER 1 & 2)

AREA CALCULATION			SERVICE AREAS (15%)								
LENGTH	BREADTH	AREA	NAME	LENGTH	BREADTH	AREA (SQM)					
44.245	X	23.815	=	1053.695	S1	0.450 X 0.600 = 0.270					
			OPEN AREAS								
NO.	LENGTH	BREADTH	AREA								
1	0.750	X	1.251	=	0.938	S2	1.800 X 0.485 = 0.873				
2	0.890	X	1.966	=	1.750	S3	1.800 X 0.485 = 0.873				
3	3.340	X	6.800	=	22.712	S4	1.115 X 0.300 = 0.335				
4	1.810	X	6.315	=	11.430	S5	0.600 X 0.370 = 0.222				
5	2.240	X	6.800	=	15.232	S6	1.710 X 0.485 = 0.829				
6	4.805	X	6.645	=	31.929	S7	1.710 X 0.485 = 0.829				
7	3.445	X	3.275	=	11.282	S8	0.600 X 0.370 = 0.222				
8	1.800	X	1.865	=	3.357	S9	1.115 X 0.300 = 0.335				
9	1.990	X	0.925	=	1.841	S10	1.800 X 0.485 = 0.873				
10	3.825	X	2.350	=	8.989	S11	1.695 X 0.485 = 0.822				
11	1.230	X	0.395	=	0.486	S12	0.450 X 0.800 = 0.360				
12	1.640	X	2.535	=	4.157	S13	1.800 X 0.485 = 0.873				
13	2.425	X	0.485	=	1.176	S14	0.600 X 0.485 = 0.291				
14	3.415	X	0.715	=	2.442	S15	1.710 X 0.600 = 1.026				
15	3.415	X	0.715	=	2.442	S16	0.380 X 0.415 = 0.158				
16	7.130	X	3.650	=	26.025	S17	2.020 X 3.150 = 6.363				
17	2.425	X	0.485	=	1.176	S18	1.580 X 0.735 = 1.161				
18	1.640	X	2.535	=	4.157	S19	1.365 X 0.735 = 1.003				
19	1.230	X	0.395	=	0.486	S20	2.050 X 2.550 = 5.228				
20	3.315	X	2.350	=	7.790	S21	2.050 X 2.550 = 5.228				
21	1.800	X	1.865	=	3.357	S22	4.790 X 2.700 = 12.933				
22	3.445	X	2.350	=	8.096	S23	1.800 X 0.735 = 1.323				
23	4.925	X	0.925	=	4.556	S24	2.700 X 4.654 = 12.566				
24	4.295	X	6.645	=	28.540	S25	0.380 X 0.415 = 0.158				
25	2.356	X	6.905	=	16.268	S26	1.710 X 0.600 = 1.026				
26	1.695	X	6.418	=	10.879	S27	0.600 X 0.485 = 0.291				
27	3.224	X	6.905	=	22.262	S28	1.800 X 0.485 = 0.873				
28	0.750	X	0.942	=	0.707	S29	0.450 X 0.600 = 0.270				
29	0.775	X	1.857	=	1.439	TOTAL			57.613		
30	1.525	X	3.270	=	4.987	DOOR / WINDOW					
31	3.720	X	0.485	=	1.804	DW	750	X	2100	=	1500
32	1.525	X	0.385	=	0.587	D	1000	X	2100		
33	7.045	X	8.780	=	61.855	D1	900	X	2100		
34	1.550	X	3.475	=	5.386	D2	750	X	2100		
35	2.640	X	0.600	=	1.584	D3	1500	X	1500		
36	16.440	X	5.855	=	96.256	W1	1350	X	1500		
37	2.250	X	1.270	=	2.858	V	600	X	600		
38	2.830	X	1.070	=	3.028	COVERED AREA FOR 2nd-22nd FLOOR					
39	1.710	X	2.035	=	3.480	542.910	X	21	=	11401.105	SQM
40	1.120	X	1.070	=	1.198	TOTAL F.A.R.					
41	2.640	X	0.600	=	1.584	485.297	X	21	=	10191.242	SQM
42	8.710	X	2.875	=	25.041	COVERED AREA / FLOOR (SQM)					
43	7.159	X	5.805	=	41.558	1053.695	-	510.785	=	542.910	
44	0.750	X	0.755	=	0.566	F.A.R. (SQM)					
45	0.890	X	1.470	=	1.308	542.910	-	57.613	=	485.297	
46	2.195	X	0.485	=	1.065	TOTAL			510.785		
47	1.524	X	0.485	=	0.739						

Project :-
 PROPOSED REVISED GROUP HOUSING FOR
 M/S SOLARIS REALTECH PRIVATE LTD
 ON PLOT NO- GH- 16 B, SECTOR 01
 GREATER NOIDA.

REVISED SANCTION DRAWING

DRAWING TITLE :-
 IDENTICAL TOWERS
 FLOOR PLANS (TOWER 1 & 2)

SCALE :- 1:100, 1:200

Project Architect

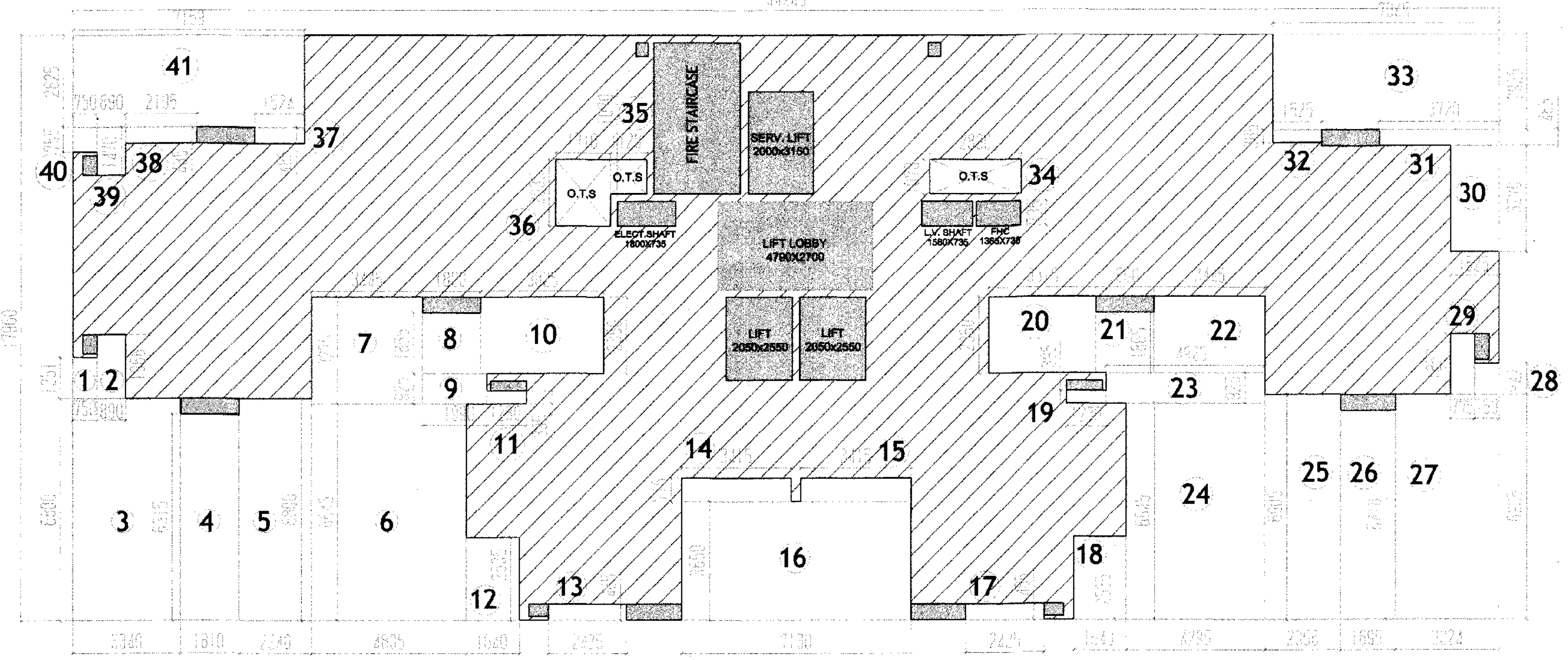
 response@rba.net.in
 B-33, Sector-51,
 NOIDA 201301, INDIA
 Telephone (95120)4246195-96
 Fax (95120)4246195
 www.rba.net.in

DRG. No.: 12

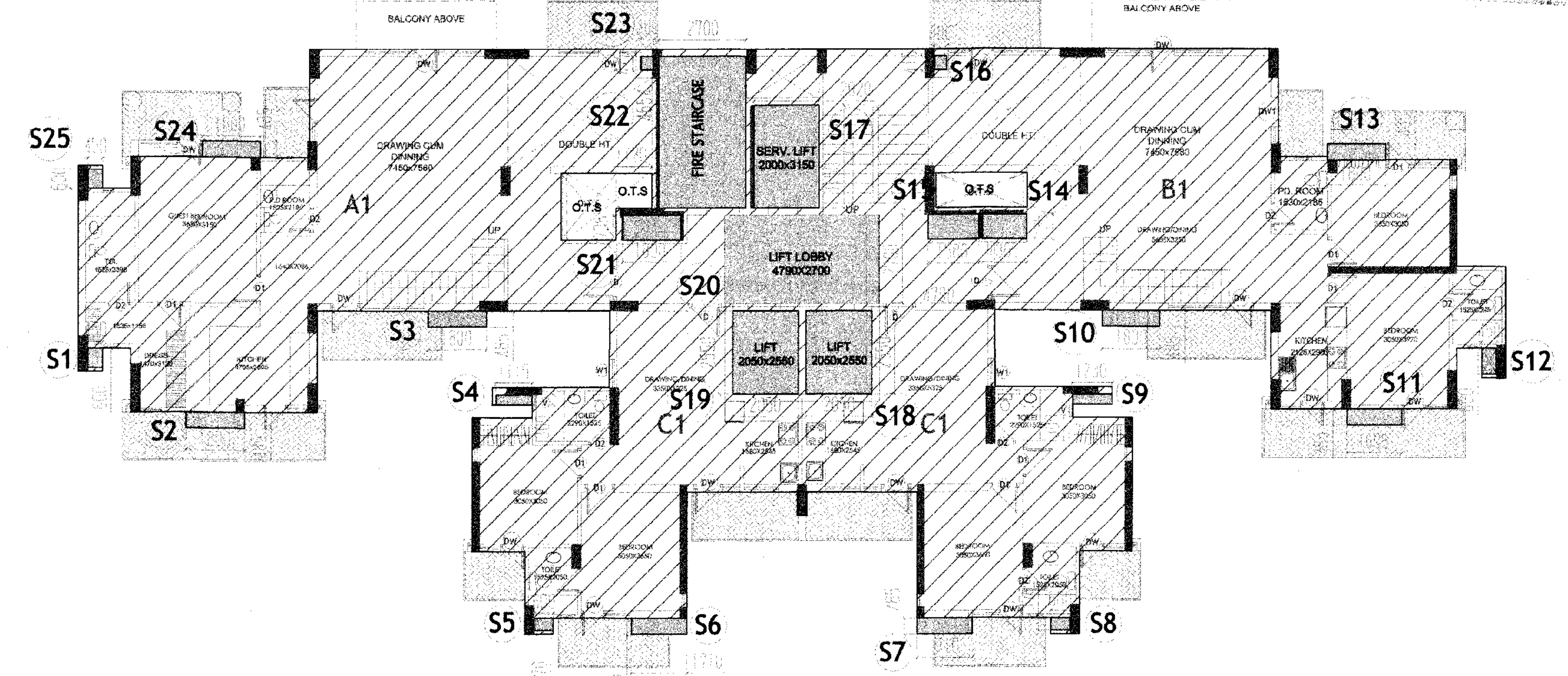
ARCHITECT SIGN:

OWNER SIGN:

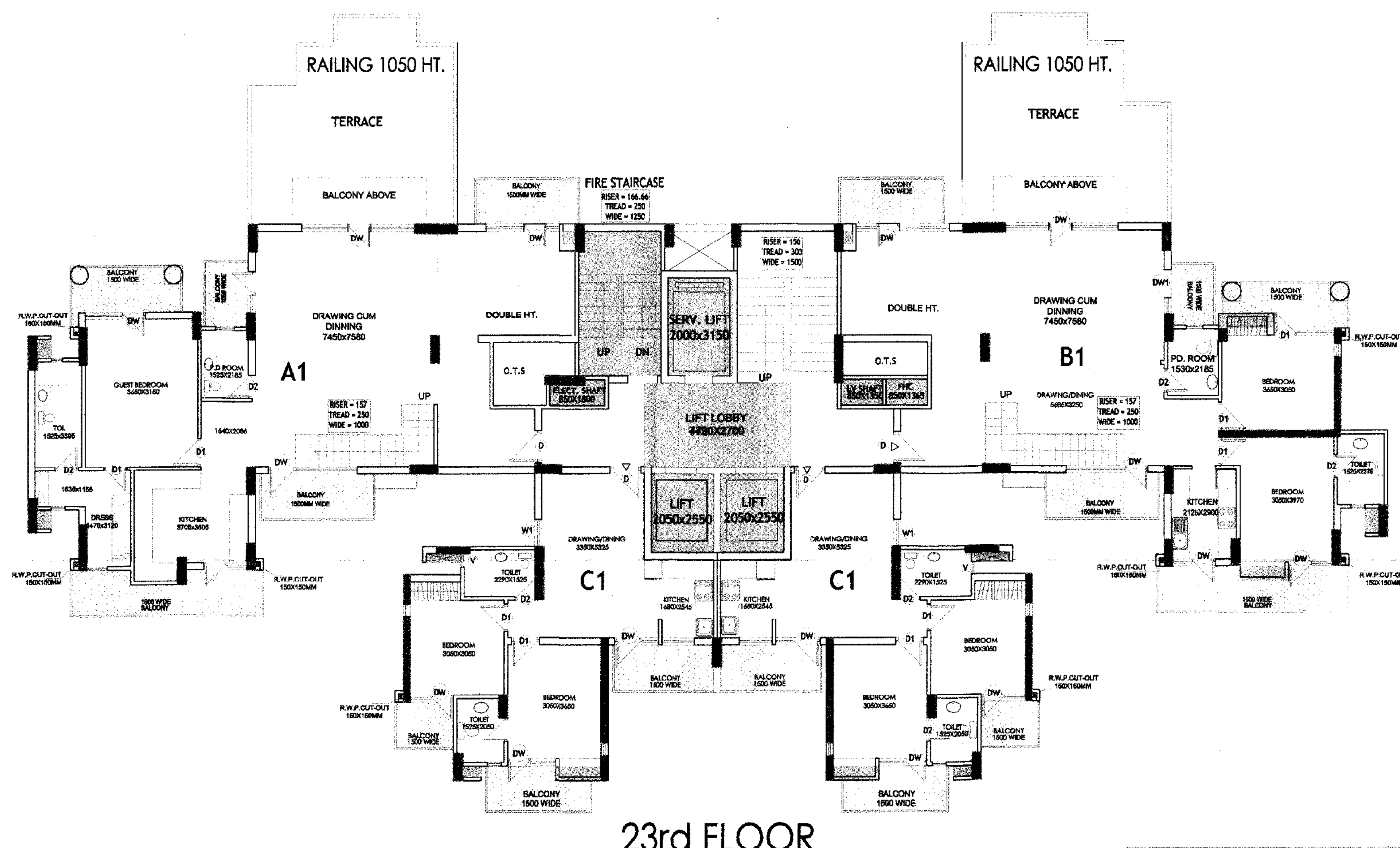
Greater Noida Industrial Dev. Authority
 Approved
 No. G.O.A. 257/2016
 Valid up to Date: 5-2018
 Number: 100/08
 D.G.M.
 (Plg. & Arch.)
 Date: 10/10/16
 (Plg. & Arch.)
 (Plg. & Arch.)



ENVELOPE PLAN



23RD FLOOR



23rd FLOOR

IDENTICAL TOWERS FLOOR PLANS(TOWER 1 & 2)

AREA CALCULATION		
LENGTH	BREADTH	AREA
44.245	X 17.960	= 794.640

SERVICE AREAS (15%)			
NAME	LENGTH	BREADTH	AREA
S1	0.450	X 0.600	= 0.270
S2	1.800	X 0.485	= 0.873
S3	1.800	X 0.485	= 0.873
S4	1.115	X 0.300	= 0.335
S5	0.600	X 0.370	= 0.222
S6	1.710	X 0.485	= 0.829
S7	1.710	X 0.485	= 0.829
S8	0.600	X 0.370	= 0.222
S9	1.115	X 0.300	= 0.335
S10	1.800	X 0.485	= 0.873
S11	1.695	X 0.485	= 0.822
S12	0.450	X 0.600	= 0.270
S13	1.800	X 0.485	= 0.873
S14	1.365	X 0.735	= 1.003
S15	1.580	X 0.735	= 1.161
S16	0.380	X 0.415	= 0.158
S17	2.020	X 3.150	= 6.363
S18	2.050	X 2.550	= 5.228
S19	2.050	X 2.550	= 5.228
S20	4.790	X 2.700	= 12.933
S21	1.800	X 0.735	= 1.323
S22	2.700	X 4.654	= 12.566
S23	0.380	X 0.415	= 0.158
S24	1.800	X 0.485	= 0.873
S25	0.450	X 0.600	= 0.270
TOTAL			54.979

OPEN AREAS			
NO.	LENGTH	BREADTH	AREA
0	0.750	X 1.251	= 0.938
1	0.890	X 1.966	= 1.750
2	3.340	X 6.800	= 22.712
3	3.340	X 6.800	= 22.712
4	1.810	X 6.315	= 11.430
5	2.240	X 6.800	= 15.232
6	4.805	X 6.645	= 31.929
7	3.445	X 3.275	= 11.287
8	1.800	X 1.865	= 3.357
9	1.990	X 0.925	= 1.841
10	3.825	X 2.350	= 8.989
11	1.230	X 0.395	= 0.486
12	1.640	X 2.535	= 4.157
13	2.425	X 0.485	= 1.176
14	3.415	X 0.715	= 2.442
15	3.415	X 0.715	= 2.442
16	7.130	X 3.650	= 26.025
17	2.425	X 0.485	= 1.176
18	1.640	X 2.535	= 4.157
19	1.230	X 0.395	= 0.486
20	3.315	X 2.350	= 7.790
21	1.800	X 1.865	= 3.357
22	3.445	X 2.350	= 8.096
23	4.925	X 0.925	= 4.556
24	4.295	X 6.645	= 28.540
25	2.356	X 6.905	= 16.268
26	1.695	X 6.418	= 10.879
27	3.224	X 6.905	= 22.262
28	0.750	X 0.942	= 0.707
29	0.775	X 1.857	= 1.439
30	1.525	X 3.270	= 4.987
31	3.720	X 0.485	= 1.804
32	1.525	X 0.385	= 0.587
33	7.045	X 2.925	= 20.607
34	2.830	X 1.070	= 3.028
35	1.120	X 1.070	= 1.198
36	1.710	X 2.035	= 3.480
37	1.524	X 0.485	= 0.739
38	2.195	X 0.485	= 1.065
39	0.890	X 1.470	= 1.308
40	0.750	X 0.755	= 0.566
41	7.159	X 2.825	= 20.224
TOTAL			338.205

DOOR / WINDOW			
DW	750.000	X 2100.000	+ 750.000 X 1500.000
D	1000.000	X 2100.000	
D1	900.000	X 2100.000	
D2	750.000	X 2100.000	
W	1500.000	X 1500.000	
W1	1350.000	X 1500.000	
V	600.000	X 600.000	

TOTAL COVERED AREA		
794.640	-	338.205 = 456.435 SQM

F.A.R.		
456.435	-	54.979 = 401.456 SQM

Project :-
 PROPOSED REVISED GROUP HOUSING FOR
 M/S SOLARIS REALTECH PRIVATE LTD
 ON PLOT NO- GH- 16 B, SECTOR 01
 GREATER NOIDA.

REVISED SANCTION DRAWING

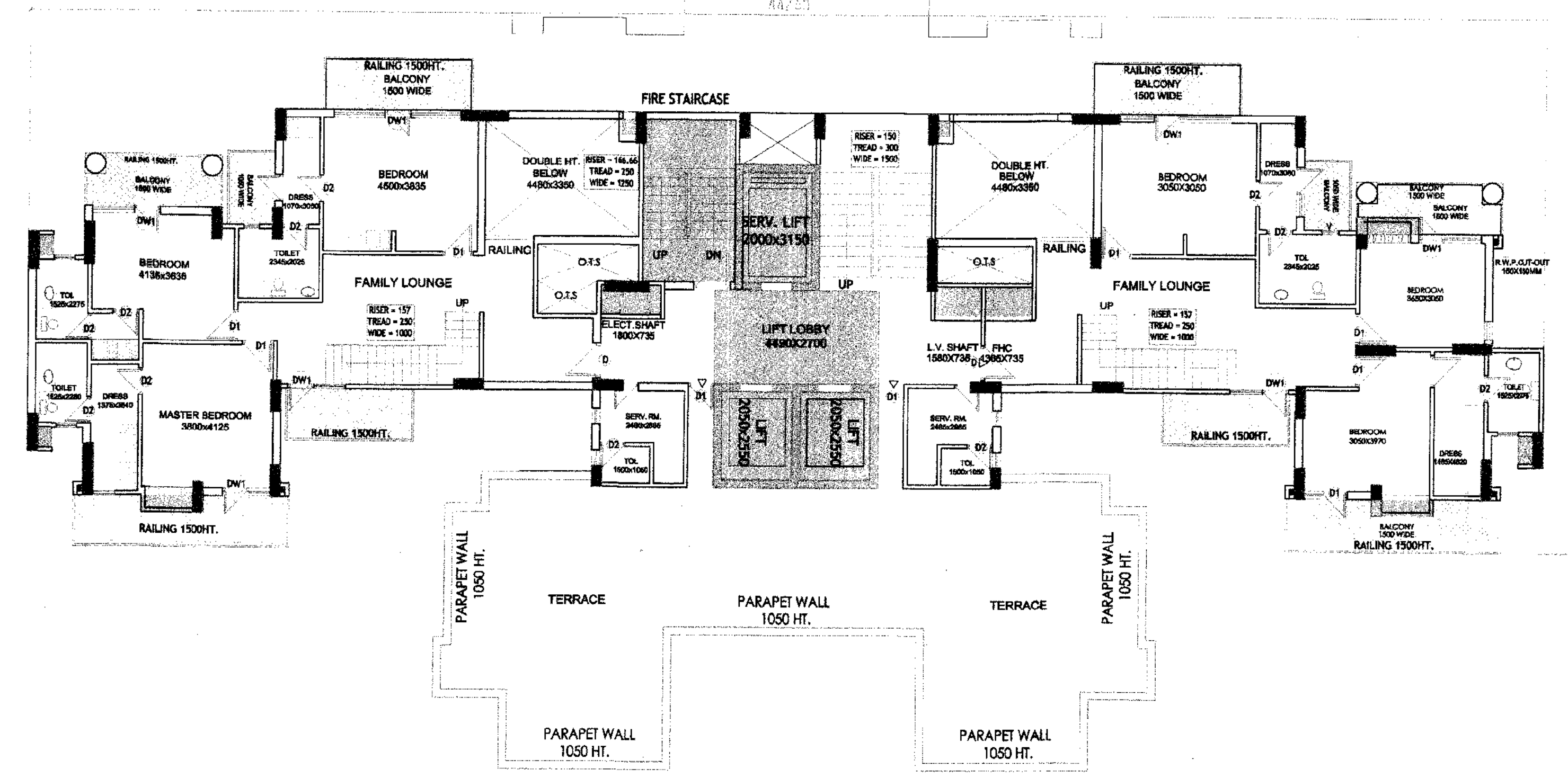
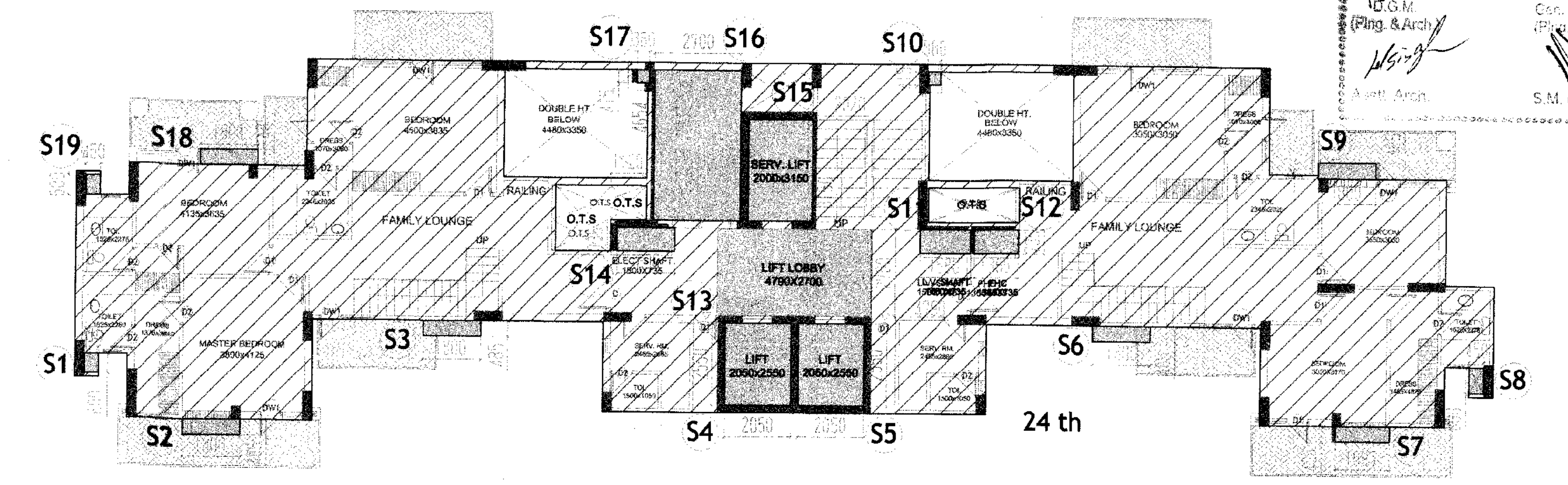
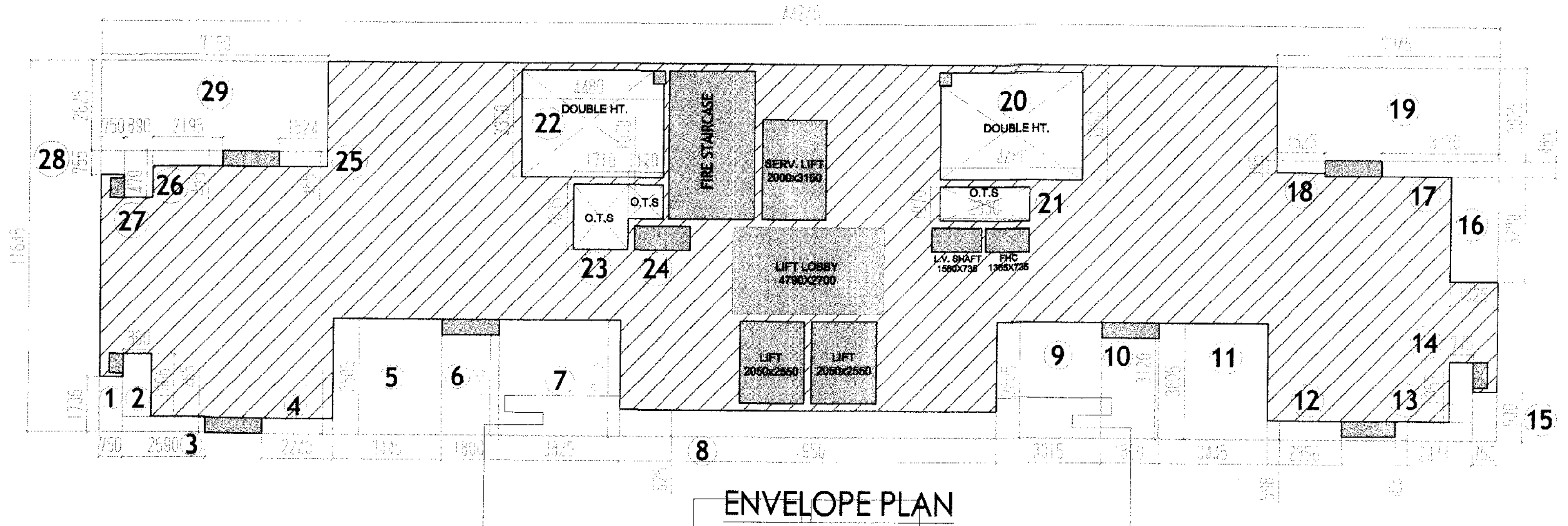
DRAWING TITLE :-
 IDENTICAL TOWERS
 FLOOR PLANS(TOWER 1&2)

SCALE :- 1:100, 1:200 DRG. No.:- 13

Project Architect
 response@ba.net.in
 8-33, Sector - 01,
 NOIDA 201301, INDIA
 Telephone (91)202461195-96
 Fax (91)202461195
 www.ba.net.in

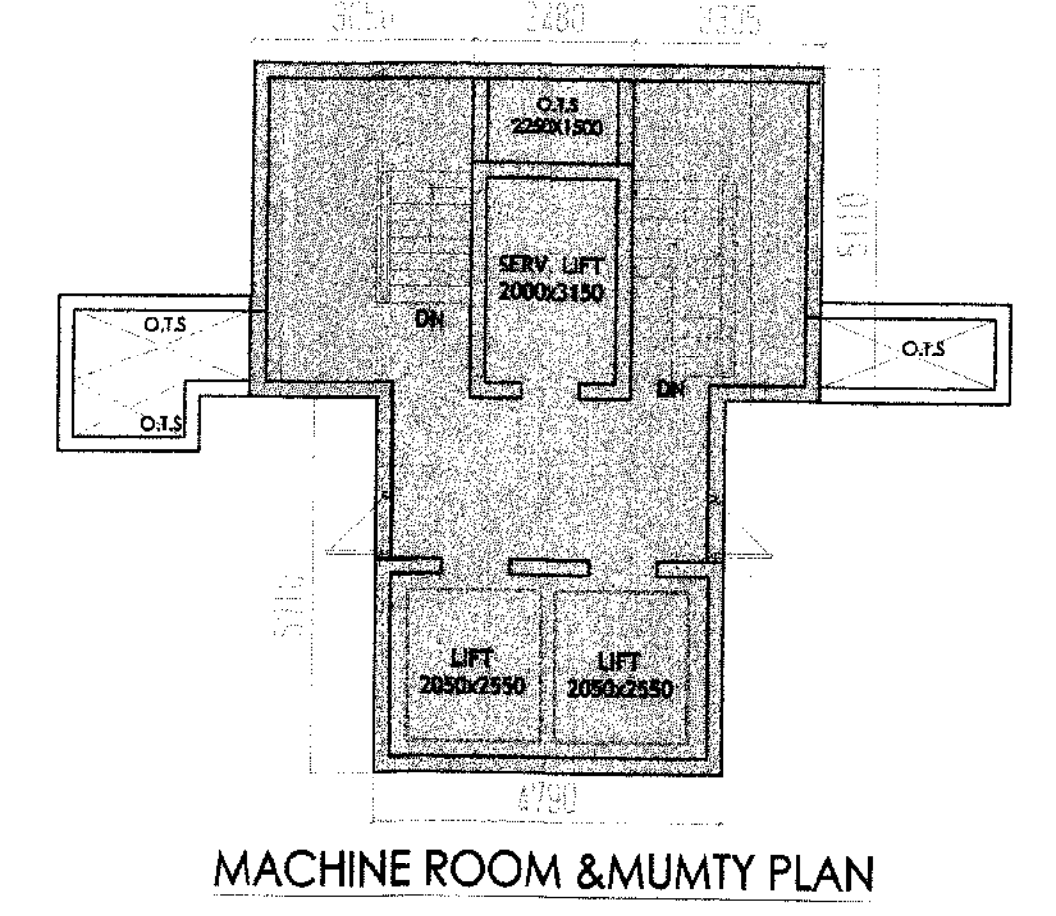
ARCHITECT SIGN: [Signature]
 OWNER SIGN: [Signature]
 AUTHORIZED SIGNATORY

APPROVED
 Date: 25/11/2016
 Valid up to Date: 5 years
 Nirmala
 (Prg. & Arch)
 S.M. (Prg.)



NAME	LENGTH	BREADTH	AREA
S1	0.450	0.600	0.270
S2	1.800	0.485	0.873
S3	1.800	0.485	0.873
S4	2.050	2.550	5.228
S5	2.050	2.550	5.228
S6	1.800	0.485	0.873
S7	1.825	0.485	0.882
S8	0.450	0.800	0.360
S9	1.800	0.485	0.873
S10	0.380	0.415	0.158
S11	1.380	0.735	1.013
S12	1.380	0.735	1.013
S13	4.700	2.700	12.693
S14	1.800	0.735	1.323
S15	2.050	1.500	3.075
S16	2.700	4.654	12.566
S17	0.380	0.415	0.158
S18	1.800	0.485	0.873
S19	0.450	0.600	0.270
TOTAL			52.207

NAME	LENGTH	BREADTH	AREA
S1	0.750	1.756	1.307
S2	0.850	1.966	1.671
S3	2.590	0.485	1.256
S4	2.240	0.485	1.086
S5	3.045	3.605	11.019
S6	1.800	1.120	2.016
S7	3.825	3.605	13.789
S8	11.950	0.825	9.859
S9	3.315	3.605	11.951
S10	1.800	1.120	2.016
S11	1.445	3.605	5.211
S12	2.356	0.588	1.385
S13	2.474	0.588	1.445
S14	0.775	1.857	1.439
S15	0.750	1.520	1.140
S16	1.525	2.270	3.452
S17	3.220	0.485	1.562
S18	1.525	0.385	0.587
S19	7.045	2.925	20.607
S20	4.480	3.350	15.008
S21	2.820	1.070	3.028
S22	4.480	3.350	15.008
S23	1.710	2.035	3.480
S24	2.120	1.070	2.268
S25	1.524	0.485	0.739
S26	2.155	0.485	1.045
S27	0.800	1.470	1.176
S28	0.750	0.750	0.563
S29	7.159	2.825	20.224
TOTAL			172.099

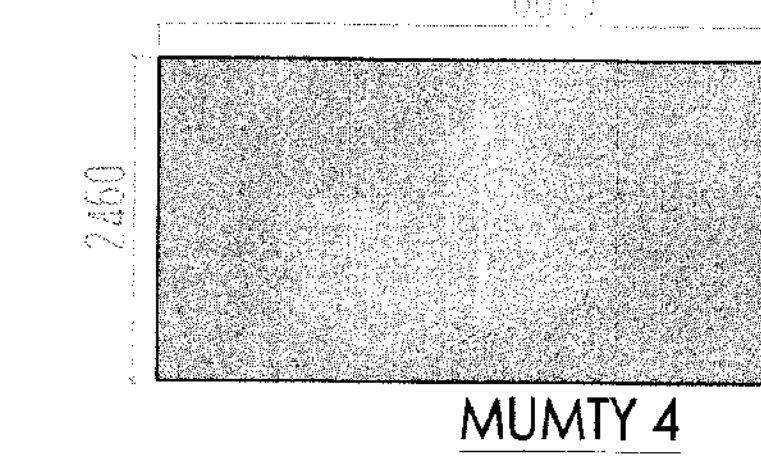
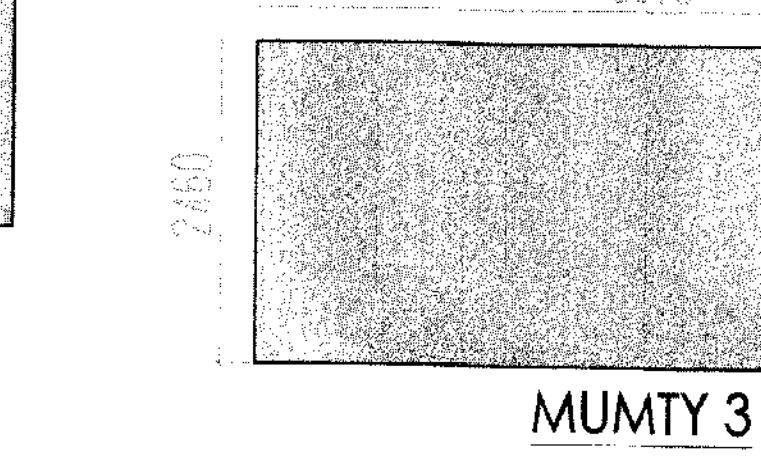
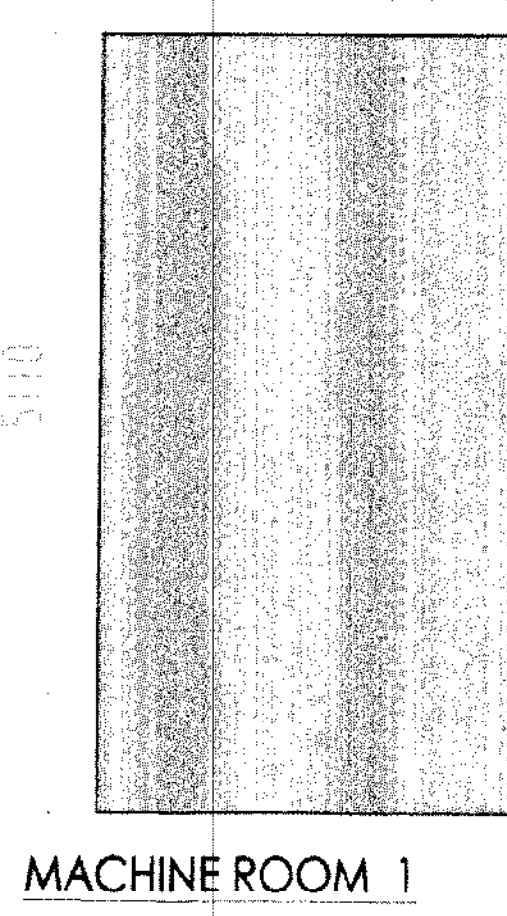
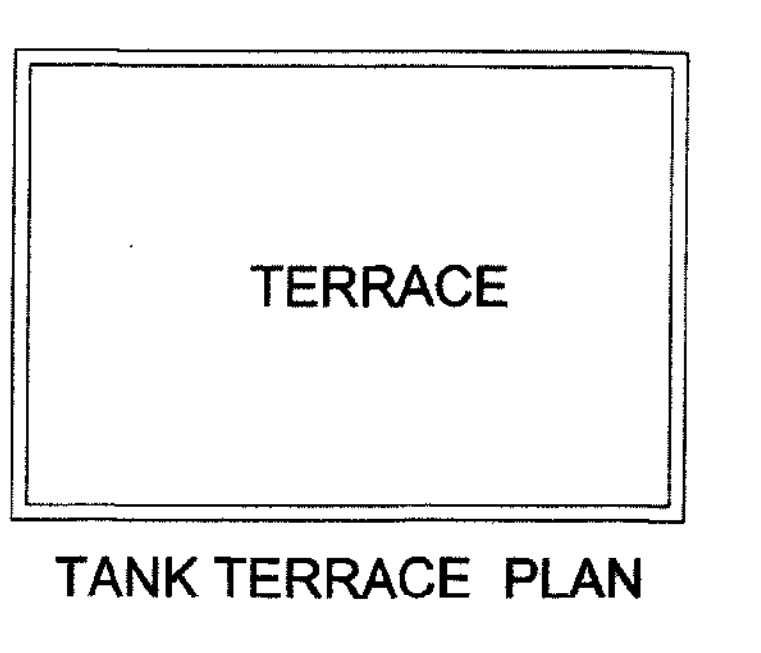
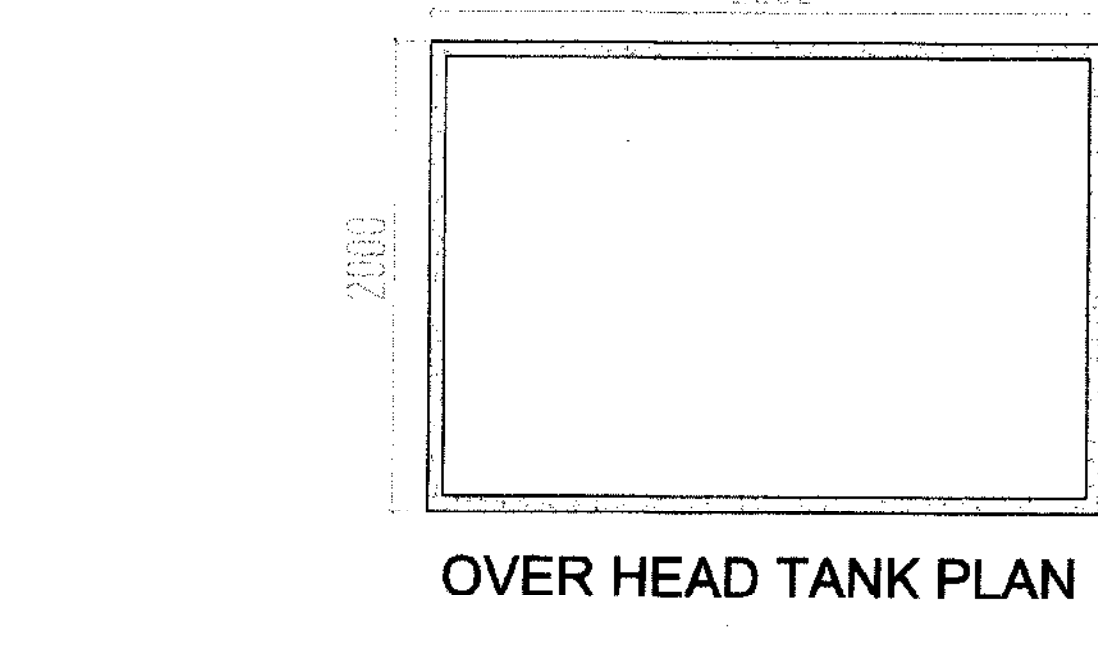
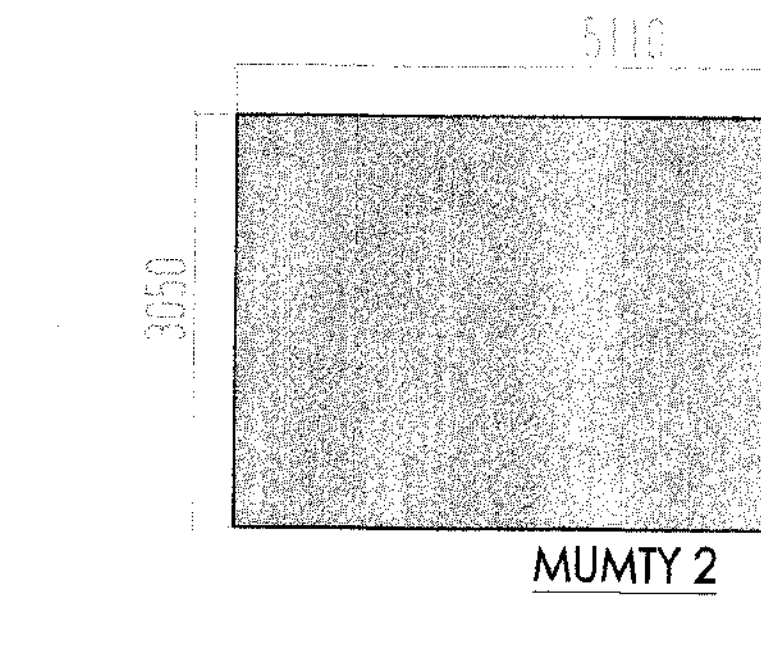
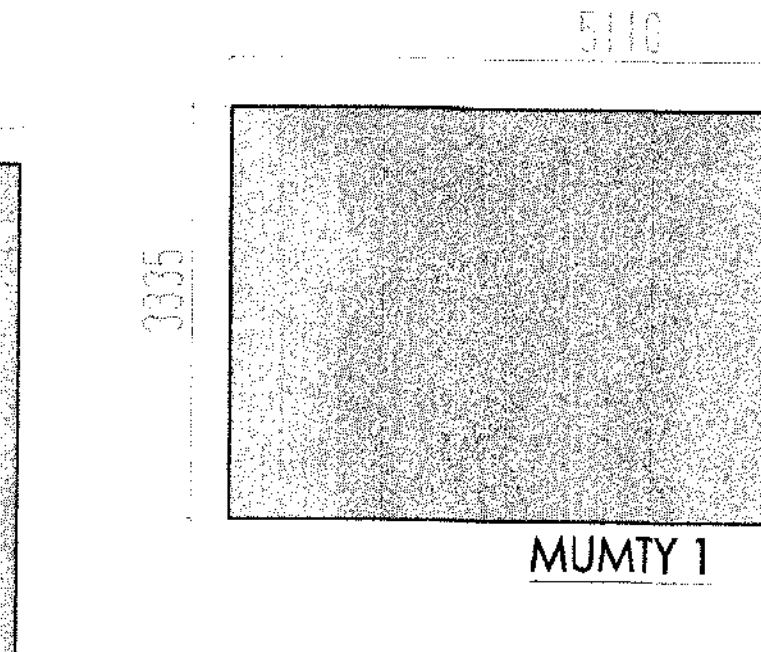
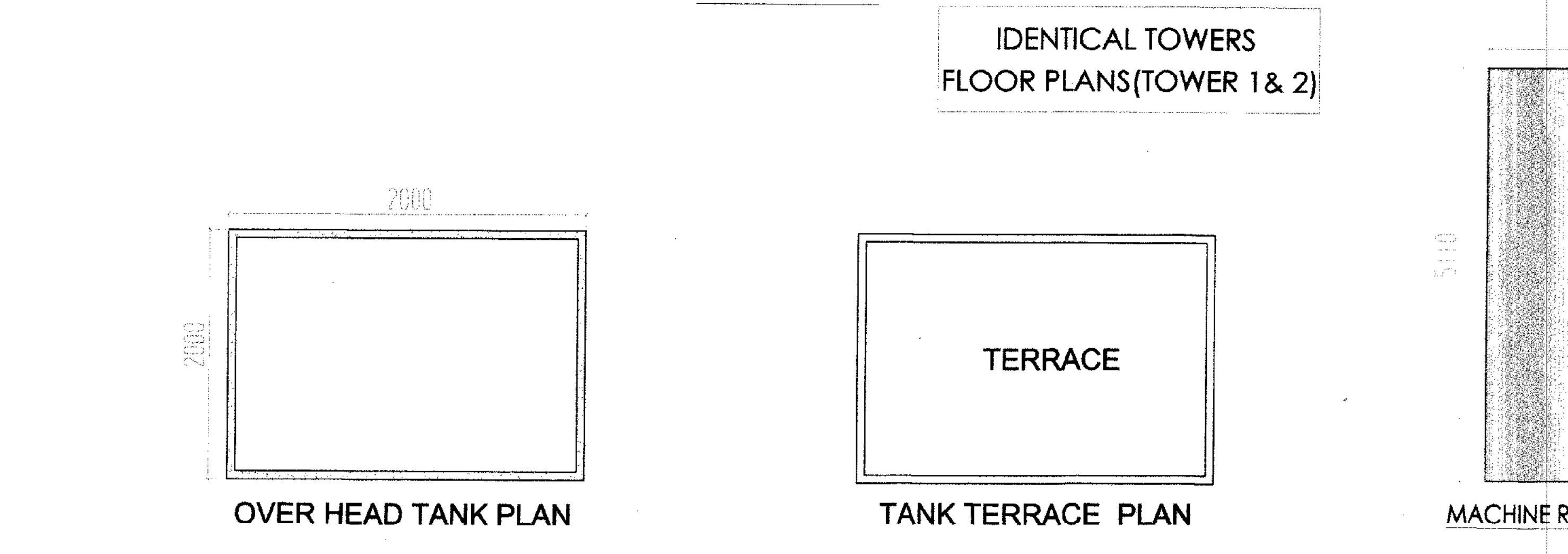
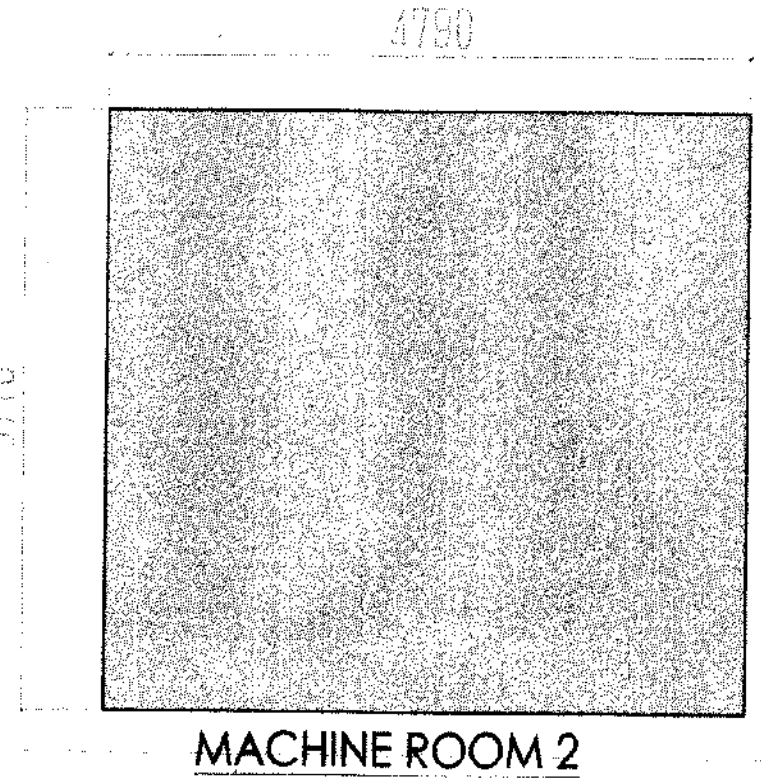
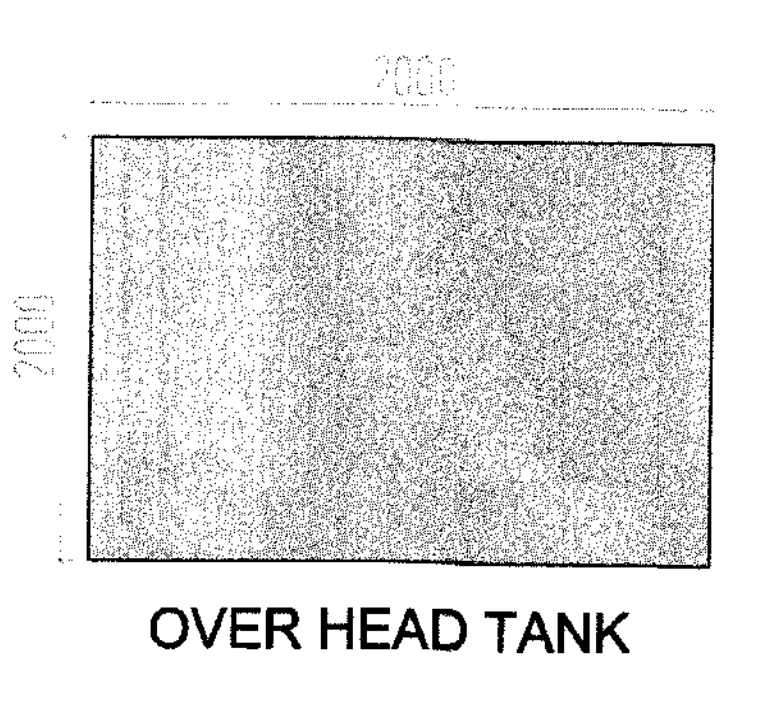
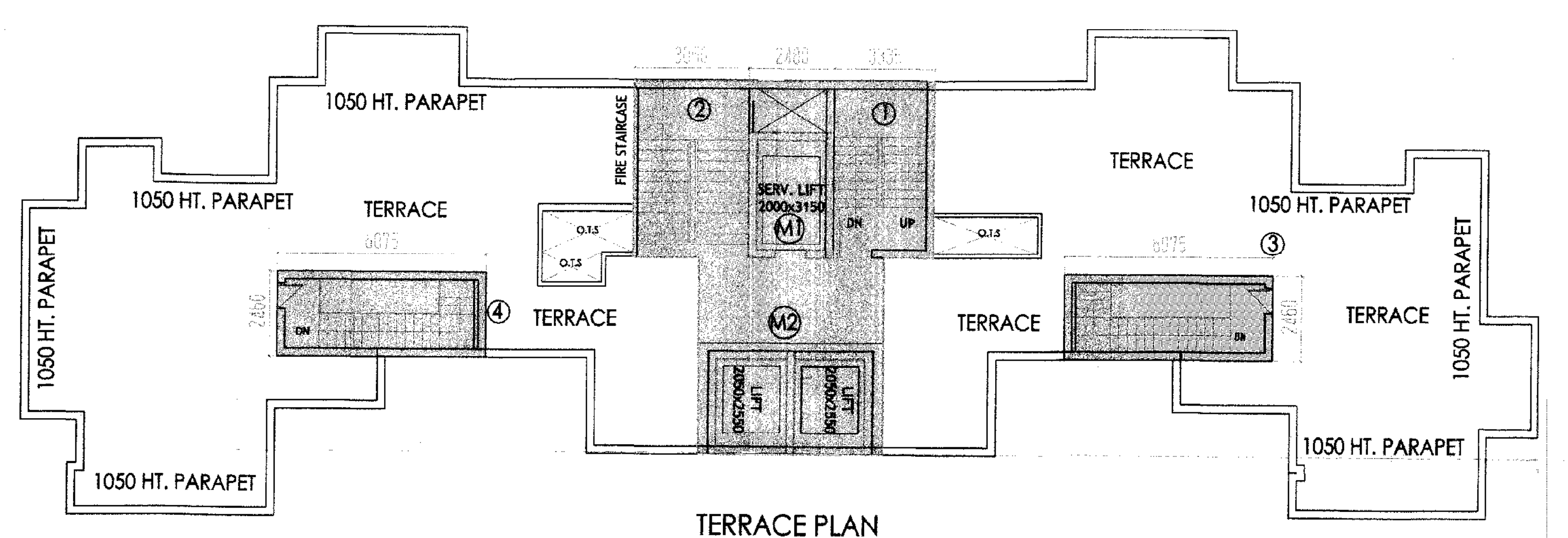
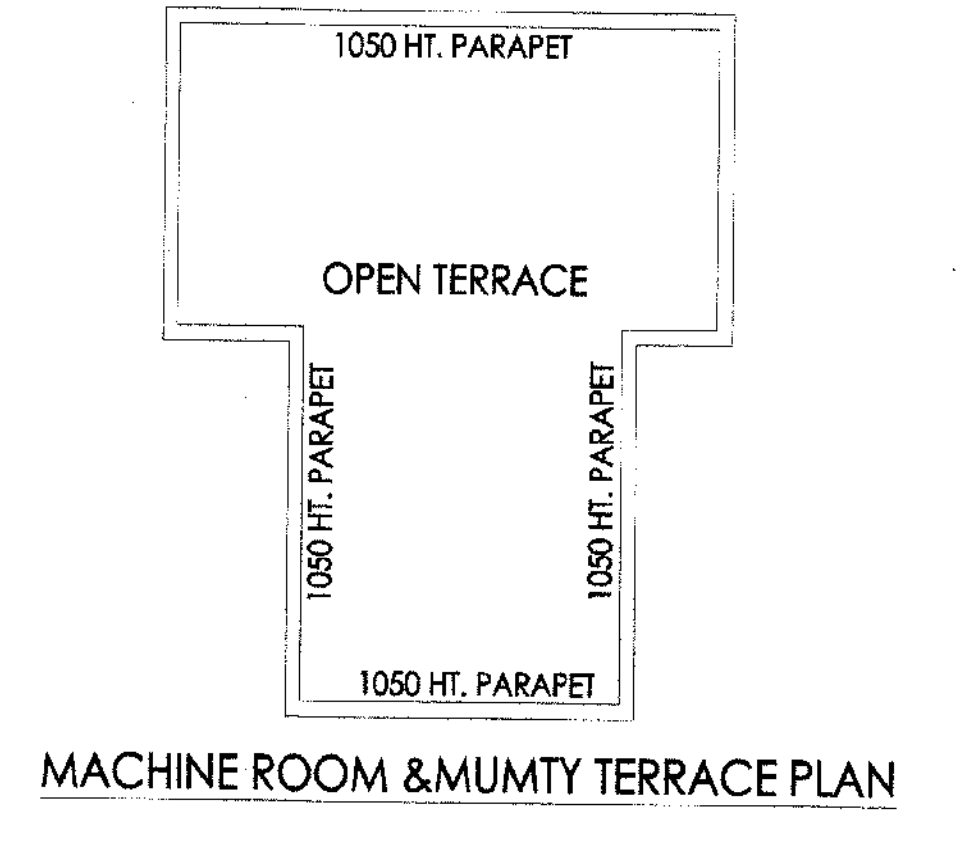


NAME	LENGTH	BREADTH	AREA
MUMTY-1	5.110	3.335	17.042
MUMTY-2	5.110	3.050	15.586
MUMTY-3	5.075	2.460	12.485
MUMTY-4	5.075	2.460	12.485
TOTAL			67.516

NAME	LENGTH	BREADTH	AREA
MACHINE ROOM 1	2.480	5.110	12.673
MACHINE ROOM 2	4.790	5.710	27.351
TOTAL			40.024

NAME	LENGTH	BREADTH	AREA
OVERHEAD TANK	2.000	2.000	4.000
TOTAL	4.000	6	24.000

NAME	LENGTH	BREADTH	AREA
TOTAL COVERED AREA	515.233	1122.999	343.134
F.A.R.	343.134	57.207	1.296.827



Project :-
 PROPOSED REVISED GROUP HOUSING FOR
 M/S SOLARIS REALTECH PRIVATE LTD
 ON PLOT NO- GH- 16 B, SECTOR 01
 GREATER NOIDA.

REVISED SANCTION DRAWING

DRAWING TITLE :-
 IDENTICAL TOWERS
 FLOOR PLANS (TOWER 1 & 2)

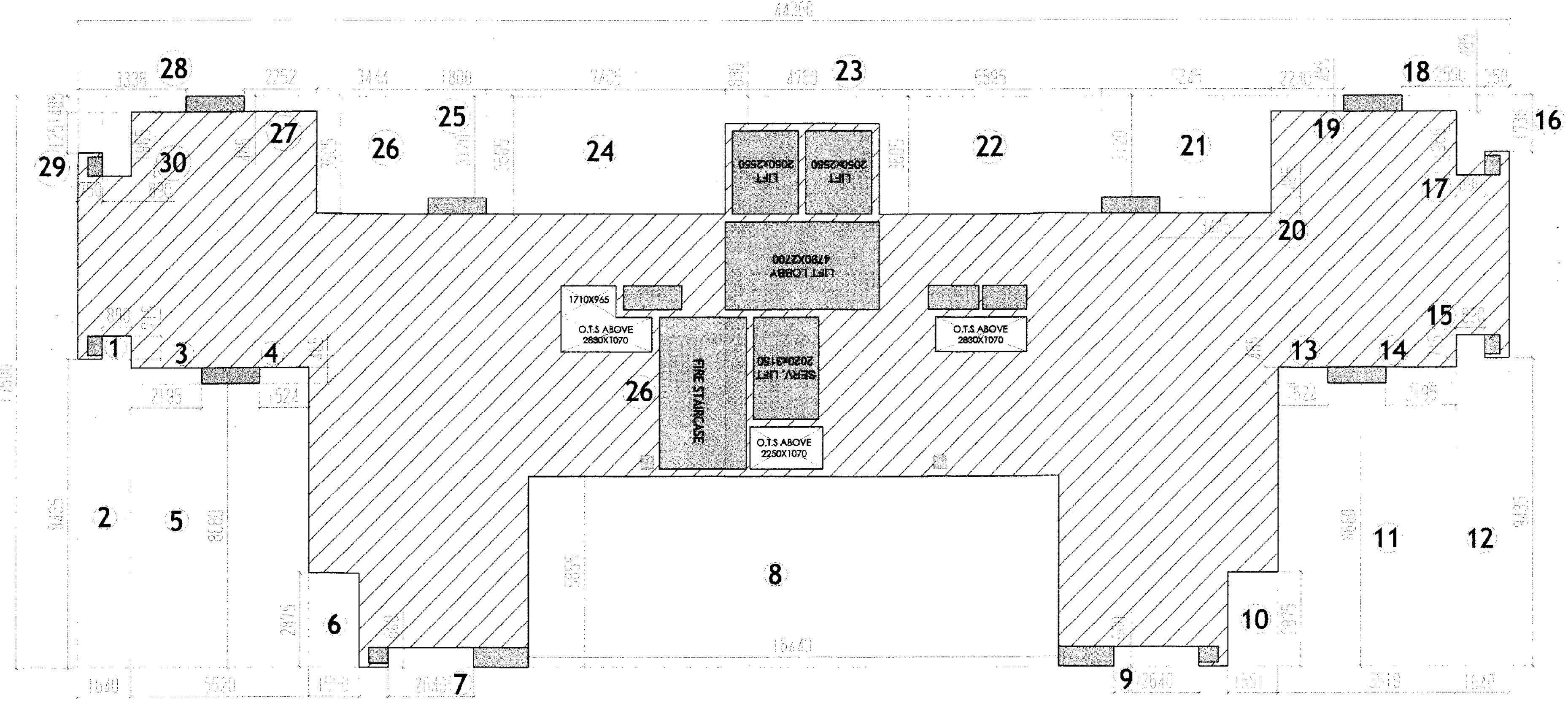
SCALE :- 1:100, 1:200 DRG. No. :- 14

Project Architect
 response@rba.net.in
 8-33, Sector-01,
 NOIDA 201301, INDIA
 Telephone: (91) 201 4246 95-96
 Fax: (91) 201 4246 4195
 www.rba.net.in

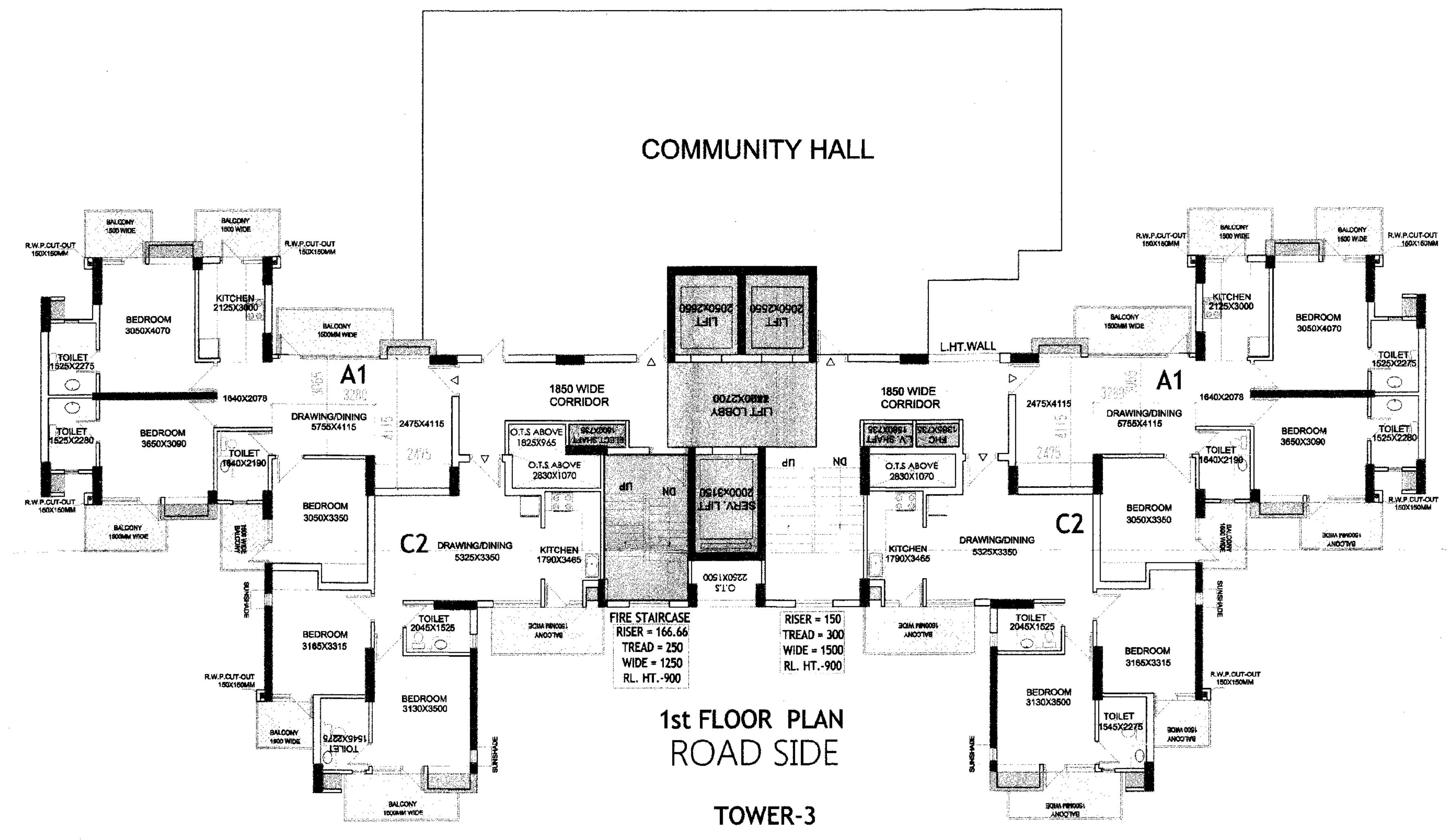
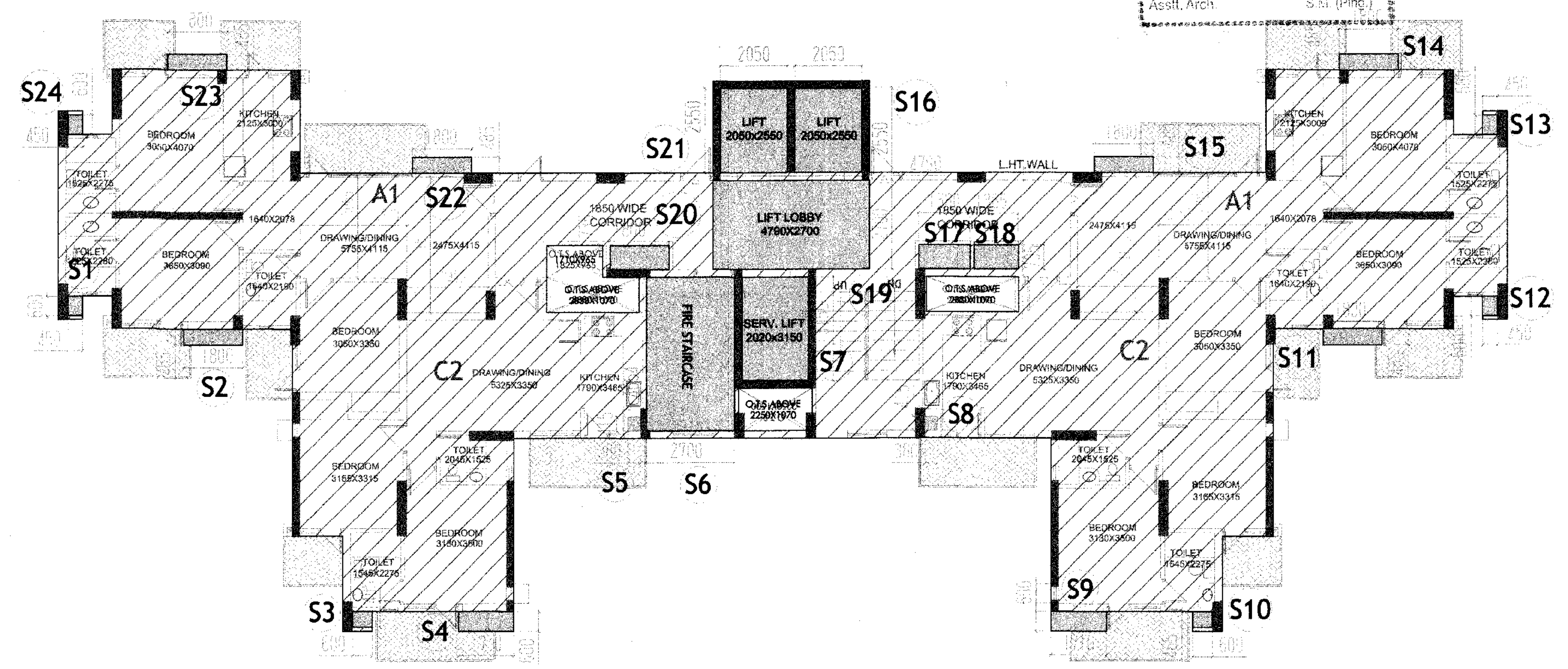
Rajmohan Solaris
 AUTHORIZED SIGNATORY

ARCHITECT SIGN OWNER SIGN

Valid up to Date: 25/11/2016
 Nishant
 (Prng. & Arch)
 Asstt. Arch
 S13 (Prng.)



ENVELOPE PLAN



1st FLOOR PLAN
ROAD SIDE
TOWER-3

1ST FLOOR

AREA CALCULATION		
LENGTH	BREADTH	AREA (SQM)
44.360	X 17.500	= 776.300

OPEN AREAS			
NO.	LENGTH	BREADTH	AREA (SQM)
1	0.890	X 0.715	= 0.636
2	1.640	X 9.435	= 15.473
3	2.195	X 0.485	= 1.065
4	1.524	X 0.485	= 0.739
5	5.520	X 8.680	= 47.914
6	1.550	X 2.875	= 4.456
7	2.640	X 0.600	= 1.584
8	16.440	X 5.855	= 96.256
9	2.640	X 0.600	= 1.584
10	1.551	X 2.875	= 4.459
11	5.519	X 8.680	= 47.905
12	1.640	X 9.435	= 15.473
13	1.524	X 0.485	= 0.739
14	2.195	X 0.485	= 1.065
15	0.890	X 0.715	= 0.636
16	0.750	X 1.736	= 1.302
17	0.890	X 1.966	= 1.750
18	2.590	X 0.485	= 1.256
19	2.240	X 0.485	= 1.086
20	3.445	X 0.485	= 1.671
21	5.245	X 3.120	= 16.364
22	6.895	X 3.605	= 24.856
23	4.789	X 0.830	= 3.975
24	7.405	X 3.605	= 26.695
25	1.800	X 3.120	= 5.616
26	3.444	X 3.605	= 12.416
27	2.252	X 0.485	= 1.092
28	3.338	X 0.485	= 1.619
29	0.750	X 1.251	= 0.938
30	0.890	X 1.965	= 1.749
TOTAL			342.371

TOTAL COVERED AREA (SQM)		
776.300	-	342.371 = 433.929

SERVICE AREAS (15%)			
NAME	LENGTH	BREADTH	AREA (SQM)
S1	0.450	X 0.600	= 0.270
S2	1.810	X 0.485	= 0.878
S3	0.600	X 0.485	= 0.291
S4	1.710	X 0.600	= 1.026
S5	0.380	X 0.415	= 0.158
S6	2.700	X 4.654	= 12.566
S7	2.020	X 3.150	= 6.363
S8	0.380	X 0.415	= 0.158
S9	1.710	X 0.600	= 1.026
S10	0.600	X 0.485	= 0.291
S11	1.800	X 0.485	= 0.873
S12	0.450	X 0.600	= 0.270
S13	0.450	X 0.600	= 0.270
S14	1.800	X 0.485	= 0.873
S15	1.800	X 0.485	= 0.873
S16	2.050	X 2.550	= 5.228
S17	1.580	X 0.735	= 1.161
S18	1.365	X 0.735	= 1.003
S19	4.790	X 2.700	= 12.933
S20	1.800	X 0.735	= 1.323
S21	2.050	X 2.550	= 5.228
S22	1.800	X 0.485	= 0.873
S23	1.800	X 0.485	= 0.873
S24	0.450	X 0.600	= 0.270
TOTAL			55.077

F.A.R. / FLOOR (SQM)		
433.929	-	55.077 = 378.853

DOOR / WINDOW					
DW	750	X	2100	+	750 X 1500
D	1000	X	2100		
D1	900	X	2100		
D2	750	X	2100		
W	1500	X	1500		
W1	1350	X	1500		
V	600	X	600		

Project :-
 PROPOSED REVISED GROUP HOUSING FOR
 MS SOLARIS REAL TECH PRIVATE LTD
 ON PLOT NO- GH- 16 B, SECTOR 01
 GREATER NOIDA.

REVISED SANCTION DRAWING

DRAWING TITLE :-
 TOWER 3
 FIRST FLOOR PLANS

SCALE :- 1:100, 1:200
 DRG. No.:- 19

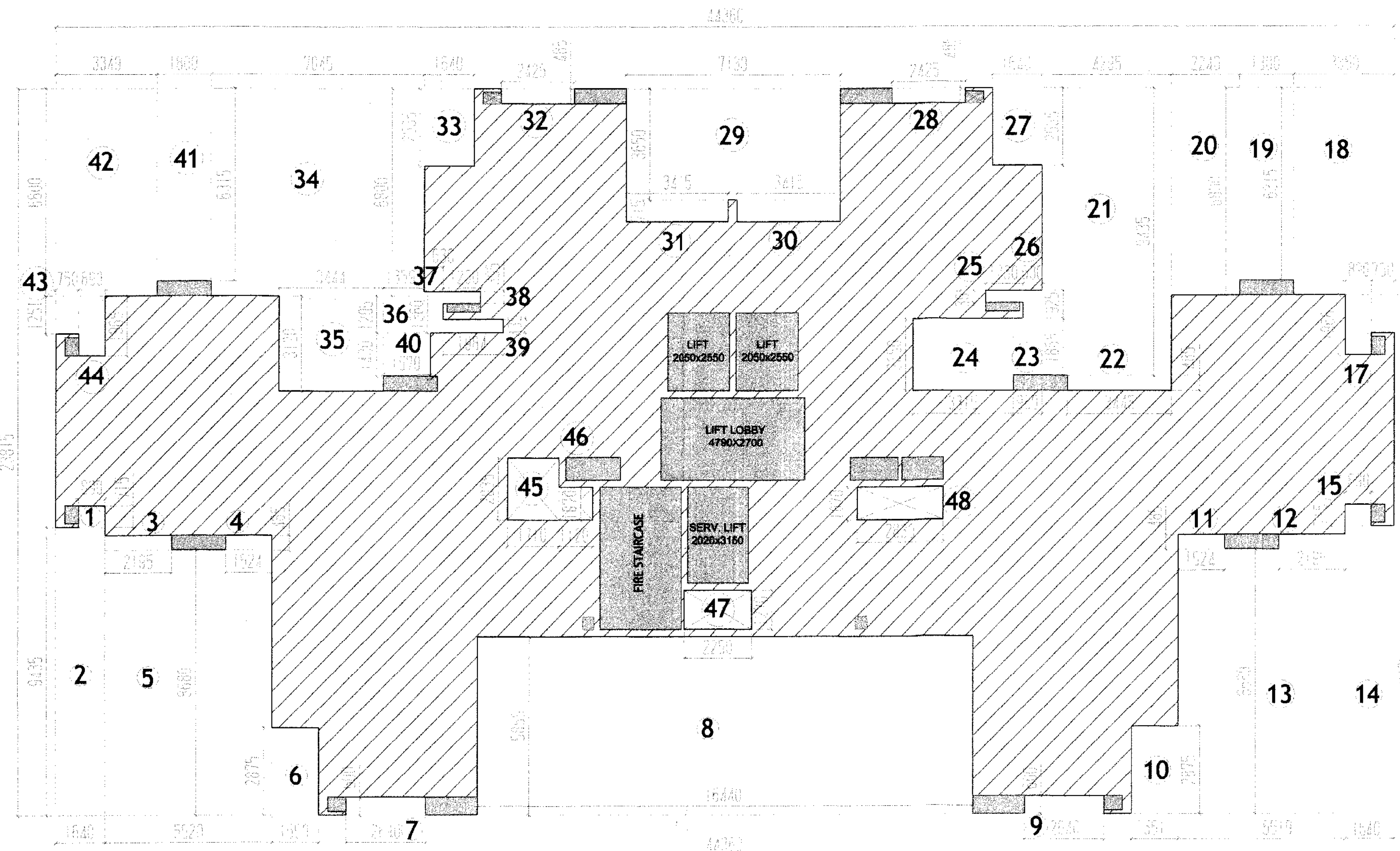
Project Architect
 RBA
 response@rba.net.in
 B - 33, Sector - 61,
 NOIDA 201301, INDIA
 Telephone (95120)4248195-96
 Fax (95120)4248195
 www.rba.net.in

Architect SIGN
 OWNER SIGN

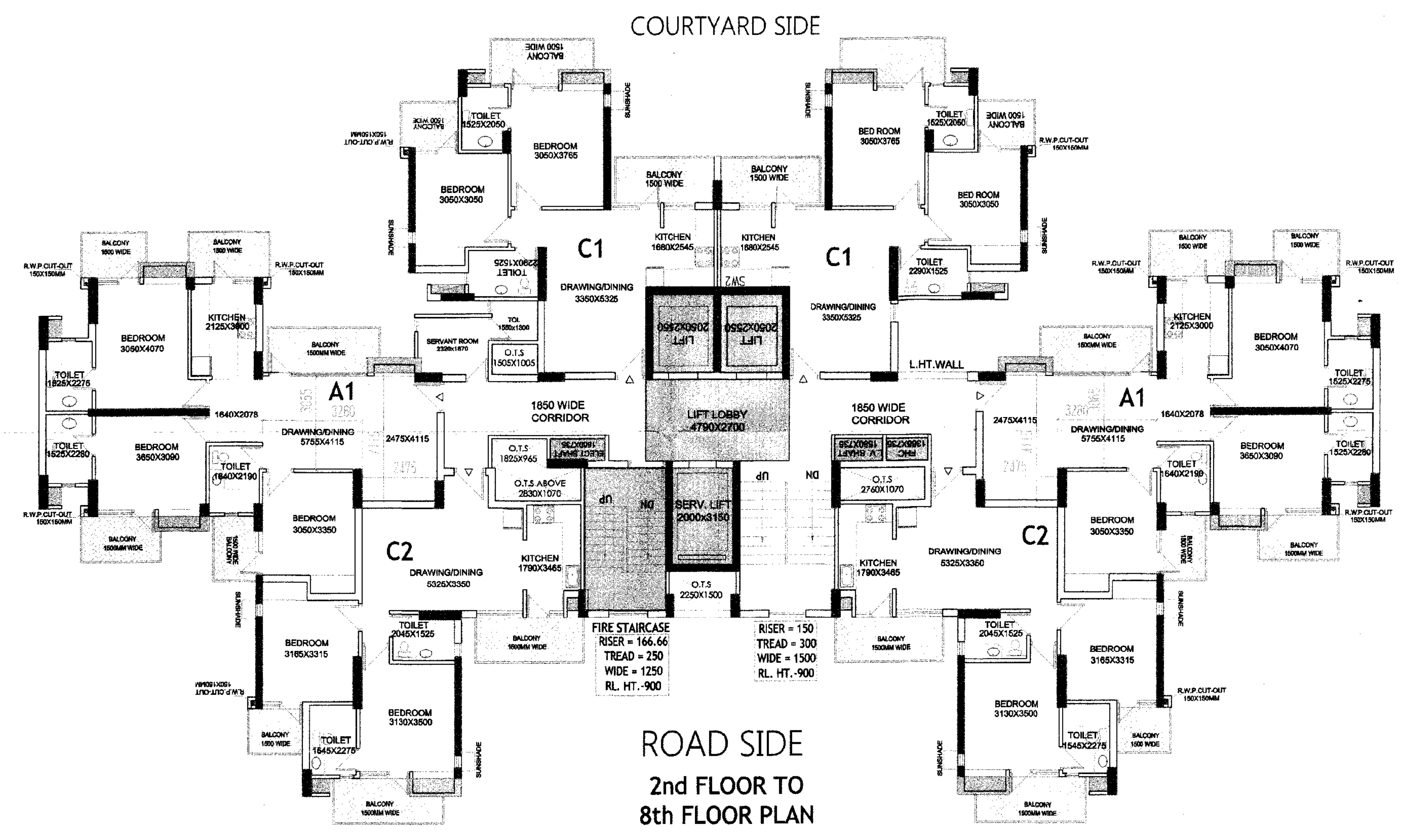
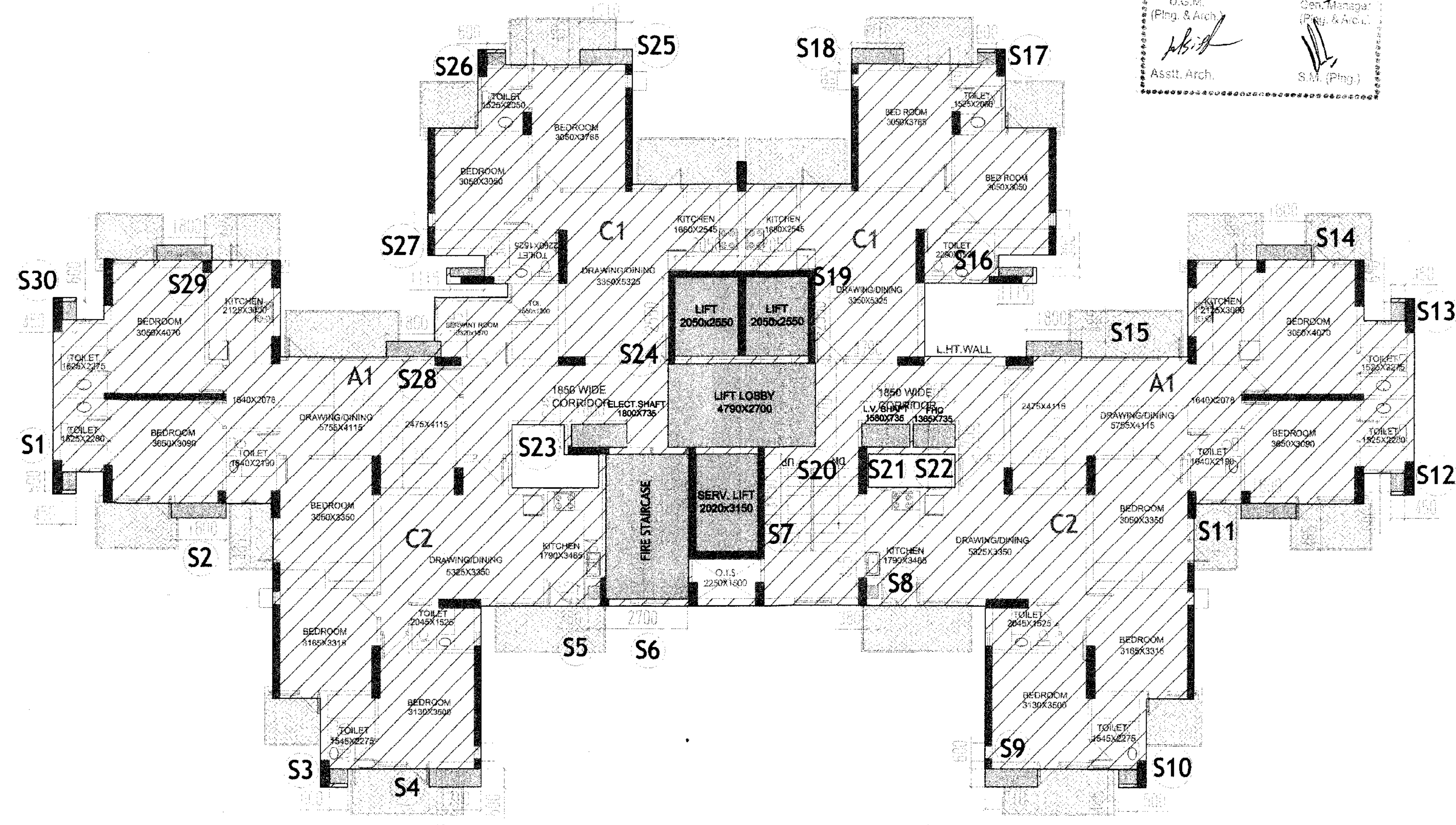
Greater Noida Industrial Dev. Authority
APPROVED
 Date: 28/07/2024
 Valid up to Date: 5 Years

N. Mohan
 D.G.M.
 (Plg. & Arch.)

Asstt. Arch.



ENVELOPE PLAN



ROAD SIDE
 2nd FLOOR TO
 8th FLOOR PLAN

2ND-8TH FLOOR

AREA CALCULATION			
LENGTH	BREADTH	AREA (SQM)	
44.360	X 23.815	= 1,056.433	
OPEN AREAS			
NO.	LENGTH	BREADTH	AREA (SQM)
1	0.890	X 0.715	= 0.636
2	1.640	X 9.435	= 15.473
3	2.195	X 0.485	= 1.065
4	1.524	X 0.485	= 0.739
5	5.520	X 8.680	= 47.914
6	1.550	X 2.875	= 4.436
7	2.640	X 0.600	= 1.584
8	16.440	X 5.855	= 96.256
9	2.640	X 0.600	= 1.584
10	1.551	X 2.875	= 4.439
11	1.524	X 0.485	= 0.739
12	2.195	X 0.485	= 1.065
13	5.519	X 8.680	= 47.905
14	1.640	X 9.435	= 15.473
15	0.990	X 0.715	= 0.706
16	0.750	X 1.251	= 0.938
17	0.890	X 1.966	= 1.750
18	3.350	X 6.800	= 22.780
19	1.800	X 6.315	= 11.367
20	2.240	X 6.800	= 15.232
21	4.295	X 9.435	= 40.523
22	3.445	X 0.485	= 1.671
23	0.950	X 1.865	= 1.772
24	3.315	X 2.350	= 7.790
25	1.230	X 0.395	= 0.486
26	0.630	X 0.925	= 0.583
27	1.640	X 2.535	= 4.157
28	2.425	X 0.485	= 1.176
29	7.130	X 3.650	= 26.025
30	3.415	X 0.715	= 2.442
31	3.415	X 0.715	= 2.442
32	2.425	X 0.485	= 1.176
33	1.640	X 2.535	= 4.157
34	7.045	X 6.800	= 47.906
35	3.444	X 3.120	= 10.745
36	1.359	X 1.205	= 1.638
37	0.630	X 1.360	= 0.857
38	1.230	X 0.395	= 0.486
39	1.984	X 0.435	= 0.863
40	1.570	X 1.430	= 2.245
41	1.800	X 6.315	= 11.367
42	3.349	X 6.800	= 22.773
43	0.750	X 1.251	= 0.938
44	0.890	X 1.965	= 1.749
45	1.710	X 2.035	= 3.480
46	1.120	X 1.070	= 1.198
47	2.250	X 1.270	= 2.858
48	2.830	X 1.070	= 3.028
TOTAL			498.583
COVERED AREA / FLOOR (SQM)			
1,056.433	-	498.583	= 557.851

SERVICE AREAS (15%)				
NAME	LENGTH	BREADTH	AREA (SQM)	
S1	0.450	X 0.600	= 0.270	
S2	1.800	X 0.485	= 0.873	
S3	0.600	X 0.485	= 0.291	
S4	1.710	X 0.600	= 1.026	
S5	0.380	X 0.415	= 0.158	
S6	2.700	X 4.654	= 12.566	
S7	2.020	X 3.150	= 6.363	
S8	0.380	X 0.415	= 0.158	
S9	1.710	X 0.600	= 1.026	
S10	0.600	X 0.485	= 0.291	
S11	1.800	X 0.485	= 0.873	
S12	0.450	X 0.600	= 0.270	
S13	0.450	X 0.600	= 0.270	
S14	1.800	X 0.485	= 0.873	
S15	1.800	X 0.485	= 0.873	
S16	1.115	X 0.300	= 0.335	
S17	0.600	X 0.370	= 0.222	
S18	1.710	X 0.485	= 0.829	
S19	2.050	X 2.550	= 5.228	
S20	4.790	X 2.700	= 12.933	
S21	1.580	X 0.735	= 1.161	
S22	1.365	X 0.735	= 1.003	
S23	1.800	X 0.735	= 1.323	
S24	7.050	X 2.550	= 5.228	
S25	1.710	X 0.485	= 0.829	
S26	0.600	X 0.370	= 0.222	
S27	1.115	X 0.300	= 0.335	
S28	1.800	X 0.485	= 0.873	
S29	1.800	X 0.485	= 0.873	
S30	0.450	X 0.600	= 0.270	
TOTAL				57.843
F.A.R. / FLOOR (SQM)				
557.851	-	57.843	= 500.007	
DOOR / WINDOW				
UW	750	X 2100	X 750	X 1500
D	1000	X 2100		
D1	900	X 2100		
D2	750	X 2100		
W	1500	X 1500		
W1	1350	X 1500		
V	600	X 600		

Project :-
 PROPOSED REVISED GROUP HOUSING FOR
 M/S SOLARIS REALTECH PRIVATE LTD
 ON PLOT NO- GH- 16 B, SECTOR 01
 GREATER NOIDA.

SANCTION DRAWING

DRAWING TITLE :-
 TOWER-3
 2ND TO 8TH FLOOR PLANS

SCALE :- 1:100, 1:200
 DRG. No.:- 20

Project Architect
 response@rba.net.in
 B-33, Sector - 51,
 NOIDA 201301, INDIA
 Telephone (95120)4246195-96
 Fax (95120)4246195
 www.rba.net.in

IRBA
 Registered Real Estate Broker

Architect Sign
 ARCHITECT SIGN

Owner Sign
 AUTHORIZED SIGNATORY