

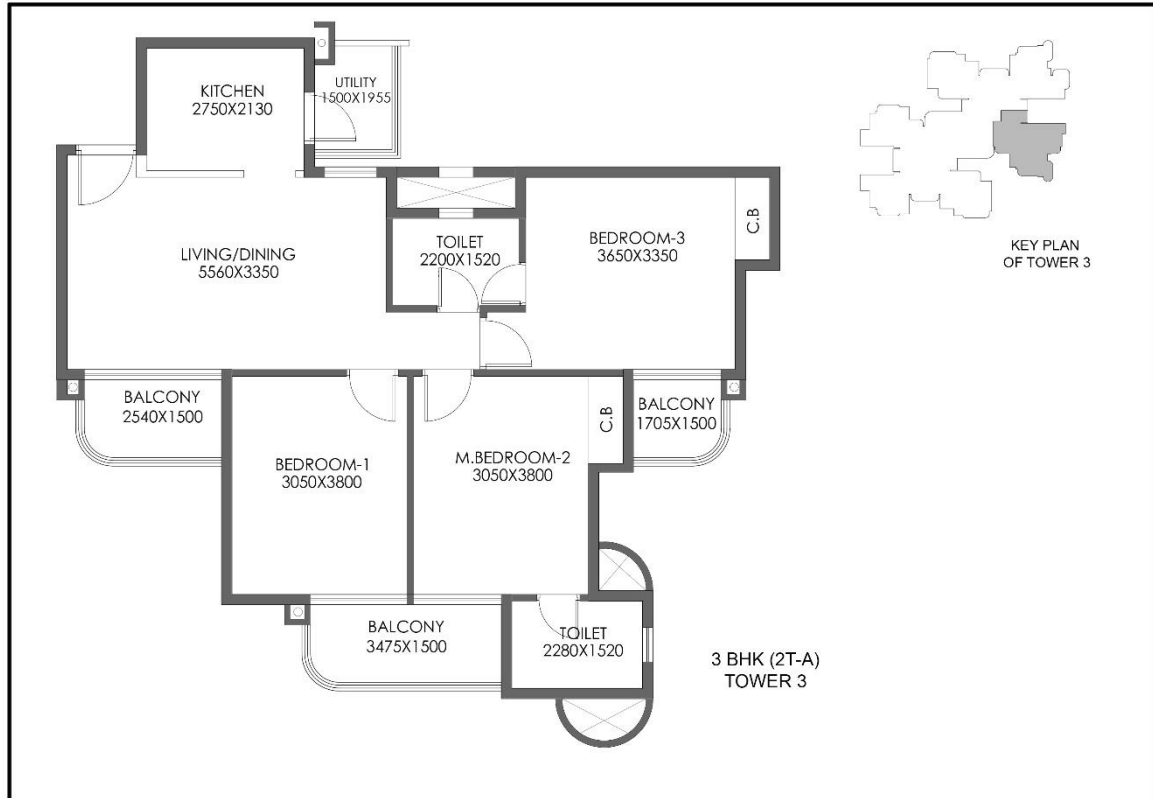
Typical Floor Unit Type 2

Super Area= 1485 sqft

Carpet Area=936 sqft

Note:

1. The window size/ its location in rooms may change because of elevation features.
2. The overall layout may vary because of statutory reasons in case required.
3. Currently no columns are shown in the plan which will be incorporated as per structure.
4. Layout shown is for illustration purpose. For specific unit floor plan please contact sales.



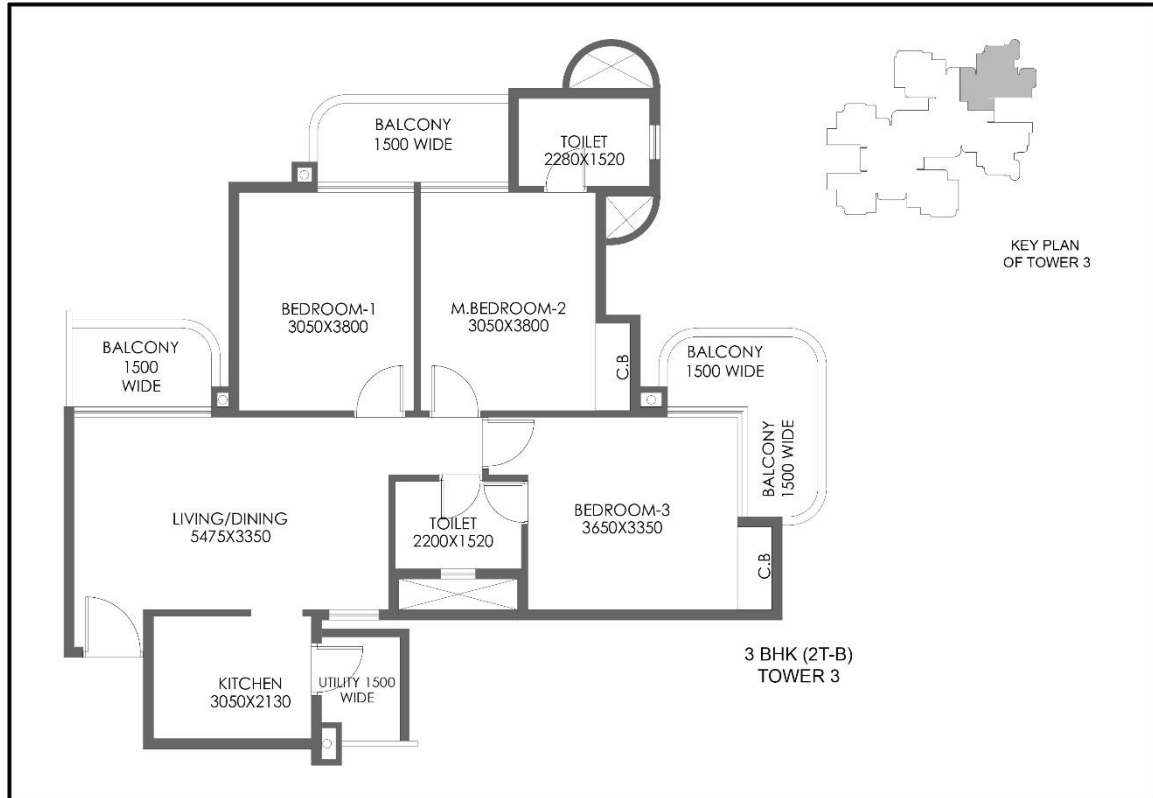
Typical Floor Unit Type A

Super Area= 1305 sqft

Carpet Area=799 sqft

Note:

1. The window size/ its location in rooms may change because of elevation features.
2. The overall layout may vary because of statutory reasons in case required.
3. Currently no columns are shown in the plan which will be incorporated as per structure.
4. Layout shown is for illustration purpose. For specific unit floor plan please contact sales.



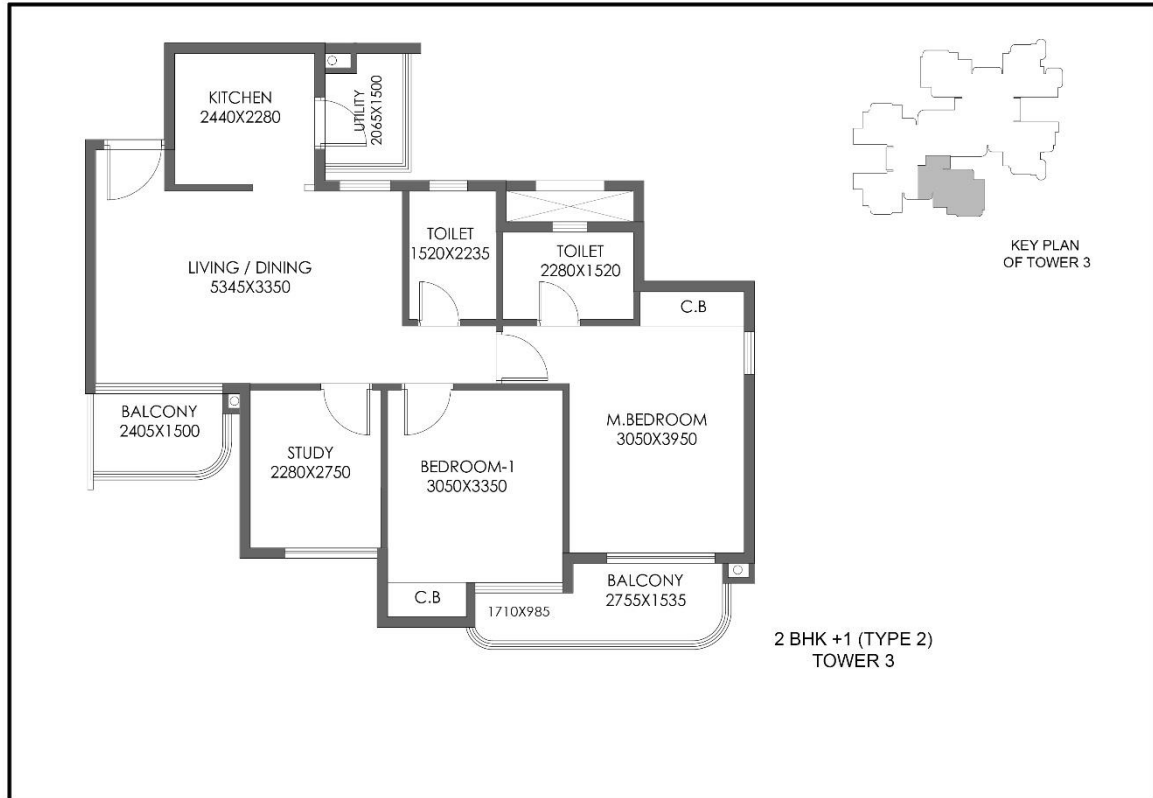
Typical Floor Unit Type B

Super Area= 1305 sqft

Carpet Area=798 sqft

Note:

1. The window size/ its location in rooms may change because of elevation features.
2. The overall layout may vary because of statutory reasons in case required.
3. Currently no columns are shown in the plan which will be incorporated as per structure.
4. Layout shown is for illustration purpose. For specific unit floor plan please contact sales.



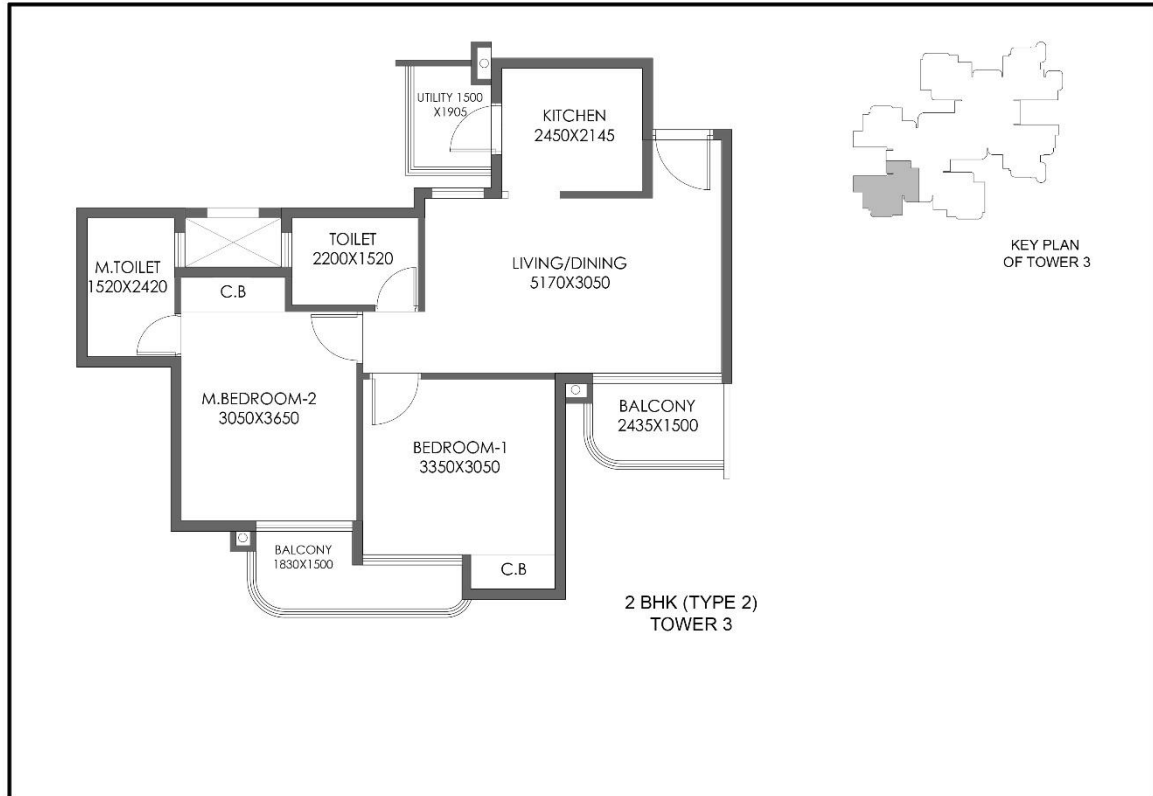
Typical Floor Unit Type 2

Super Area= 1170 sqft

Carpet Area=727 sqft

Note:

1. The window size/ its location in rooms may change because of elevation features.
2. The overall layout may vary because of statutory reasons in case required.
3. Currently no columns are shown in the plan which will be incorporated as per structure.
4. Layout shown is for illustration purpose. For specific unit floor plan please contact sales.



Typical Floor Unit Type 2

Super Area= 982 sqft

Carpet Area=603 sqft

Note:

1. The window size/ its location in rooms may change because of elevation features.
2. The overall layout may vary because of statutory reasons in case required.
3. Currently no columns are shown in the plan which will be incorporated as per structure.
4. Layout shown is for illustration purpose. For specific unit floor plan please contact sales.