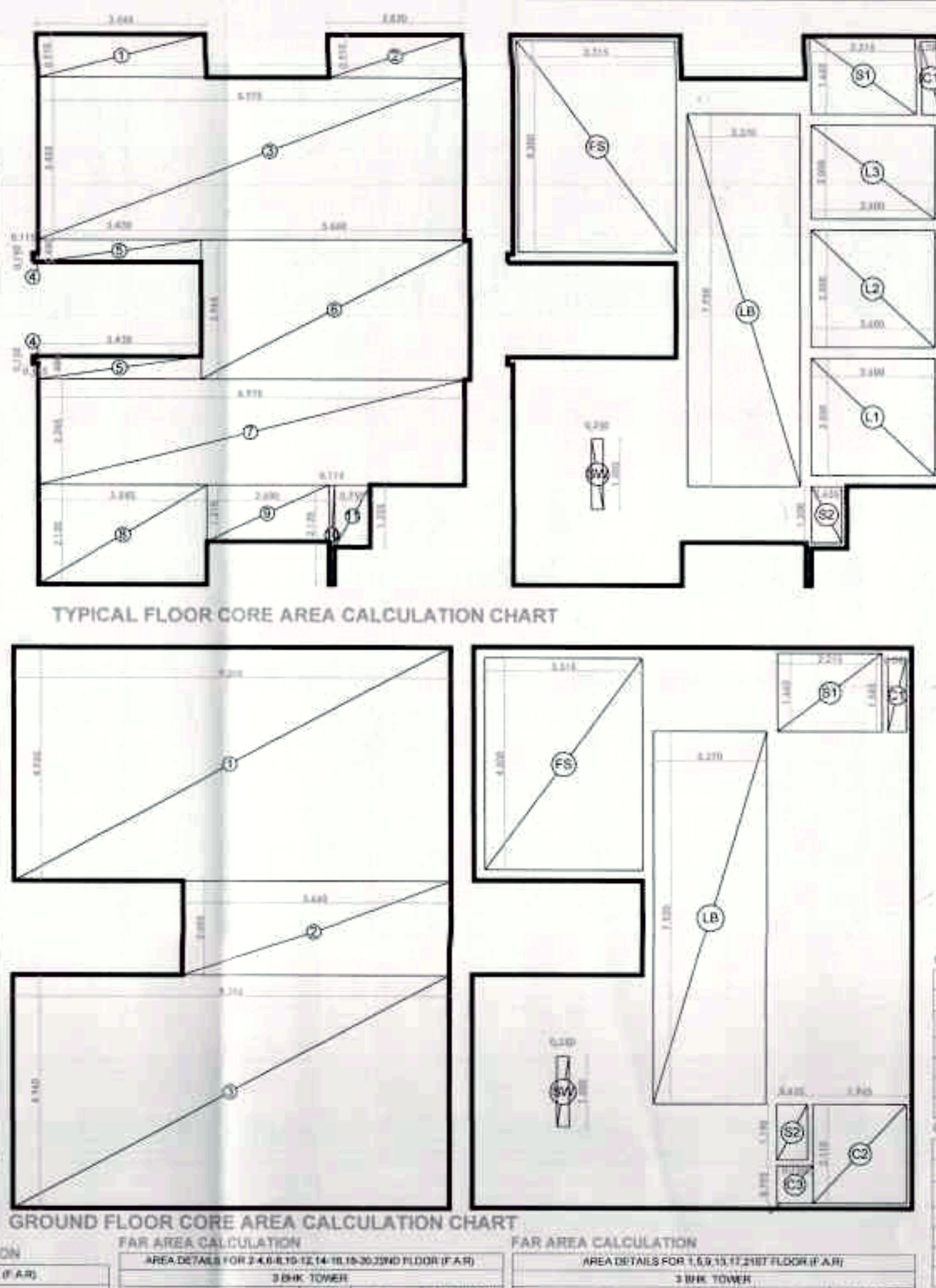
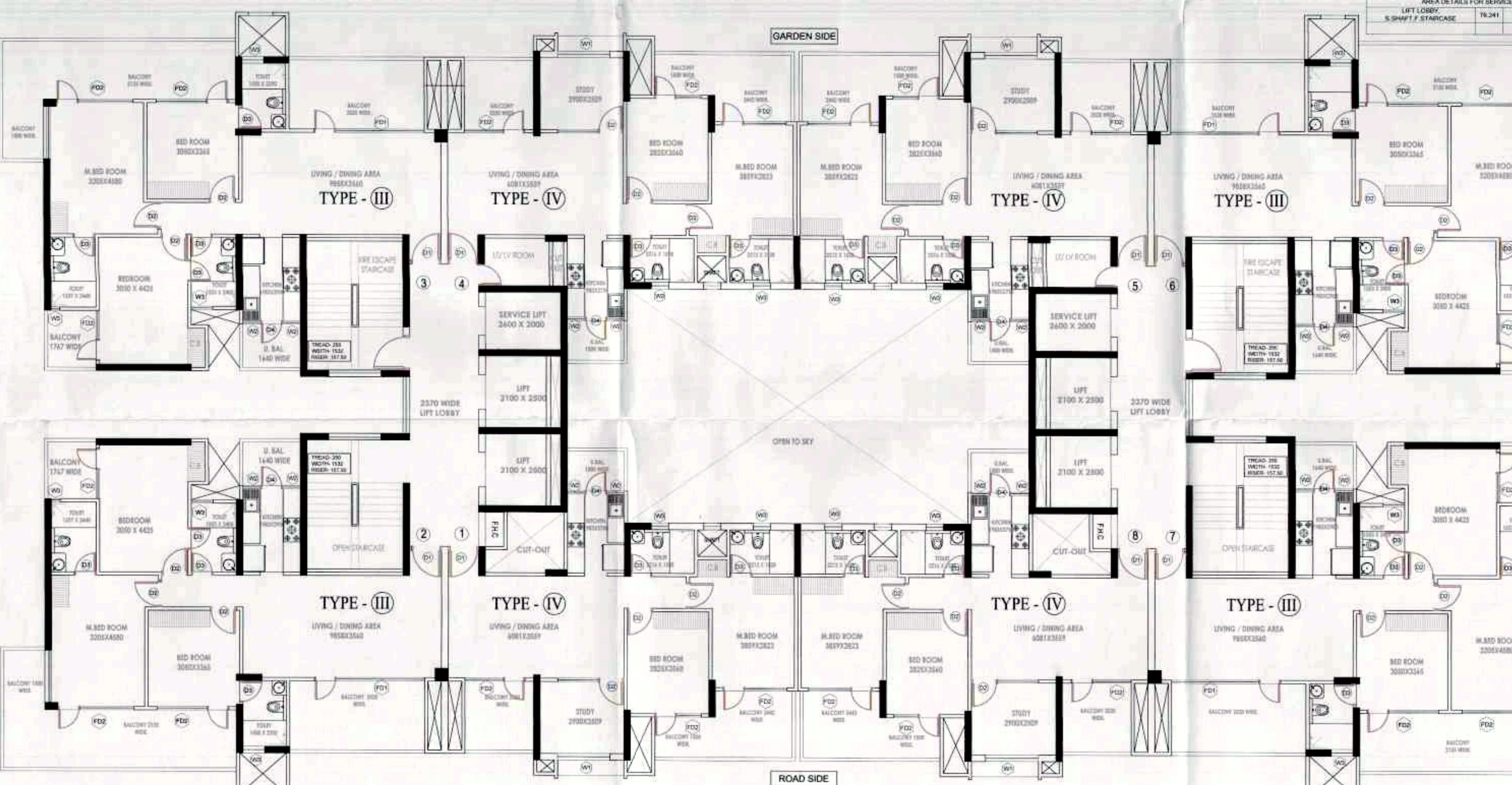


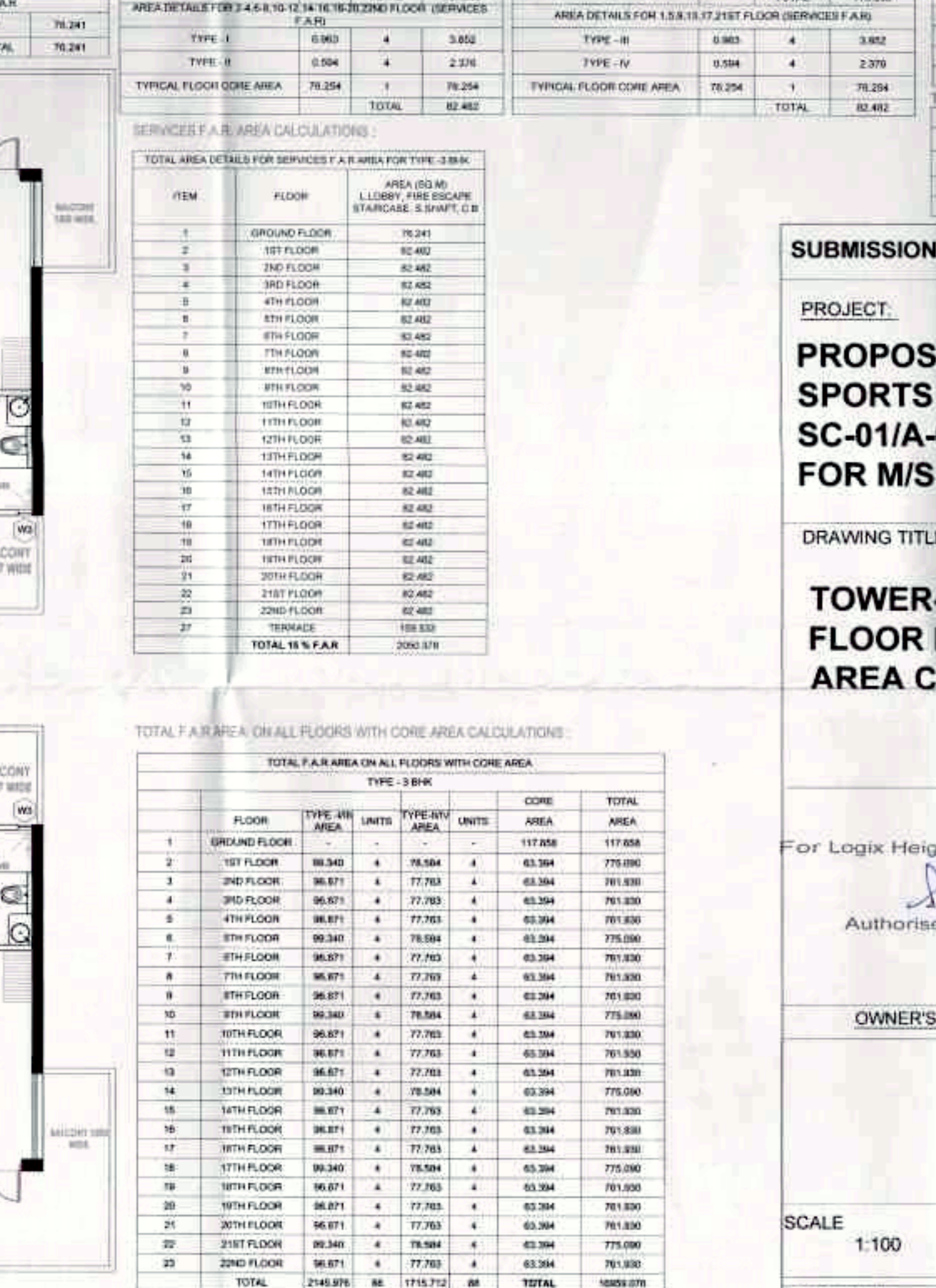
FLOOR PLAN AT 2,3,4,6,7,8,10,11,12,14,15,16,18,19,20 & 22 (TYPE-I & II)



TYPICAL FLOOR CORE AREA CALCULATION CHART



FLOOR PLAN AT 1,5,9,13,17 & 21 (TYPE-III & IV)



TYPICAL FLOOR CORE AREA CALCULATION CHART

TYPICAL FLOOR CORE AREA CALCULATION CHART

ITEM	WIDTH	LENGTH	NO	AREA (SQ M)	
1	3.540	X	2.920	2	4.228
2	2.820	X	0.910	2	5.134
3	8.875	X	3.450	2	12.017
4	0.115	X	0.190	4	0.087
5	3.430	X	0.900	4	1.224
6	3.880	X	2.360	2	18.256
7	3.875	X	2.240	2	17.300
8	3.545	X	2.125	2	15.026
9	2.800	X	1.210	2	6.820
10	0.115	X	1.120	2	0.258
11	0.750	X	1.150	2	1.718
TOTAL				117.866	

GROUND FLOOR CORE AREA CALCULATION CHART

ITEM	WIDTH	LENGTH	NO	AREA (SQ M)	
1	5.205	X	4.900	2	51.314
2	5.800	X	2.925	2	33.810
3	5.205	X	4.900	2	51.314
TOTAL				136.438	

TYPICAL FLOOR CORE AREA CALCULATION CHART

FAR AREA CALCULATION

ITEM	AREA	NO	AREA (SQ M)
TYPE - I	96.871	4	387.484
TYPE - II	77.763	4	311.052
TOTAL			698.536

FAR AREA CALCULATION

ITEM	AREA	NO	AREA (SQ M)
TYPE - I	96.871	4	387.484
TYPE - II	77.763	4	311.052
TOTAL			698.536

FAR AREA CALCULATION

ITEM	AREA	NO	AREA (SQ M)
TYPE - I	96.871	4	387.484
TYPE - II	77.763	4	311.052
TOTAL			698.536

GROUND FLOOR CORE AREA DETAILS FOR SERVICES FAR

ITEM	WIDTH	LENGTH	NO	AREA (SQ M)	
LIFT LOBBY	2.370	X	7.820	2	37.541
SERVICE SHAFT-1	2.215	X	1.660	2	7.354
SERVICE SHAFT-2	2.815	X	1.190	2	6.707
FIRE STAIRCASE	3.315	X	4.300	2	28.535
TOTAL				78.241	

GROUND FLOOR CORE AREA DETAILS FOR SERVICES FAR

ITEM	WIDTH	LENGTH	NO	AREA (SQ M)	
SW	0.250	X	1.500	2	0.750
C1	0.385	X	1.545	2	1.190
C2	1.965	X	2.110	2	8.280
C3	0.750	X	0.790	2	1.183
TOTAL				11.424	

GROUND FLOOR CORE AREA DETAILS FOR SERVICES FAR

ITEM	WIDTH	LENGTH	NO	AREA (SQ M)	
SW	0.250	X	1.500	2	0.750
C1	0.385	X	1.545	2	1.190
TOTAL				1.940	

TOTAL FAR AREA ON ALL FLOORS WITH CORE AREA CALCULATIONS

FLOOR	TYPE-III AREA	TYPE-IV AREA	UNITS	CORE AREA	TOTAL AREA
1	96.871	77.763	4	698.536	1774.870
2	96.871	77.763	4	698.536	1774.870
3	96.871	77.763	4	698.536	1774.870
4	96.871	77.763	4	698.536	1774.870
5	96.871	77.763	4	698.536	1774.870
6	96.871	77.763	4	698.536	1774.870
7	96.871	77.763	4	698.536	1774.870
8	96.871	77.763	4	698.536	1774.870
9	96.871	77.763	4	698.536	1774.870
10	96.871	77.763	4	698.536	1774.870
11	96.871	77.763	4	698.536	1774.870
12	96.871	77.763	4	698.536	1774.870
13	96.871	77.763	4	698.536	1774.870
14	96.871	77.763	4	698.536	1774.870
15	96.871	77.763	4	698.536	1774.870
16	96.871	77.763	4	698.536	1774.870
17	96.871	77.763	4	698.536	1774.870
18	96.871	77.763	4	698.536	1774.870
19	96.871	77.763	4	698.536	1774.870
20	96.871	77.763	4	698.536	1774.870
21	96.871	77.763	4	698.536	1774.870
22	96.871	77.763	4	698.536	1774.870
TOTAL					2148.976

SUBMISSION DRAWING

PROJECT: **PROPOSED REVISED PLAN FOR SPORTS CITY AT LAND PARCEL SC-01/A-03 SECTOR-150, NOIDA (U.P) FOR M/S LOGIX HEIGHTS PVT. LTD.**

DRAWING TITLE: **TOWER-2 FLOOR PLANS & AREA CALCULATIONS**

[REVISED PLAN]

For Logix Heights Pvt. Ltd. *Authorised Signatory*

Arvind Kumar Jain, Architect
Council of Architecture
Regn. No. CA/8500457

OWNER'S SIGN: _____ ARCHITECT'S SIGN: _____

SCALE: 1:100 DEALT BY: _____ DATE: _____

DESIGN BY: _____ CHECKED BY: _____ DRG. No. SD-09