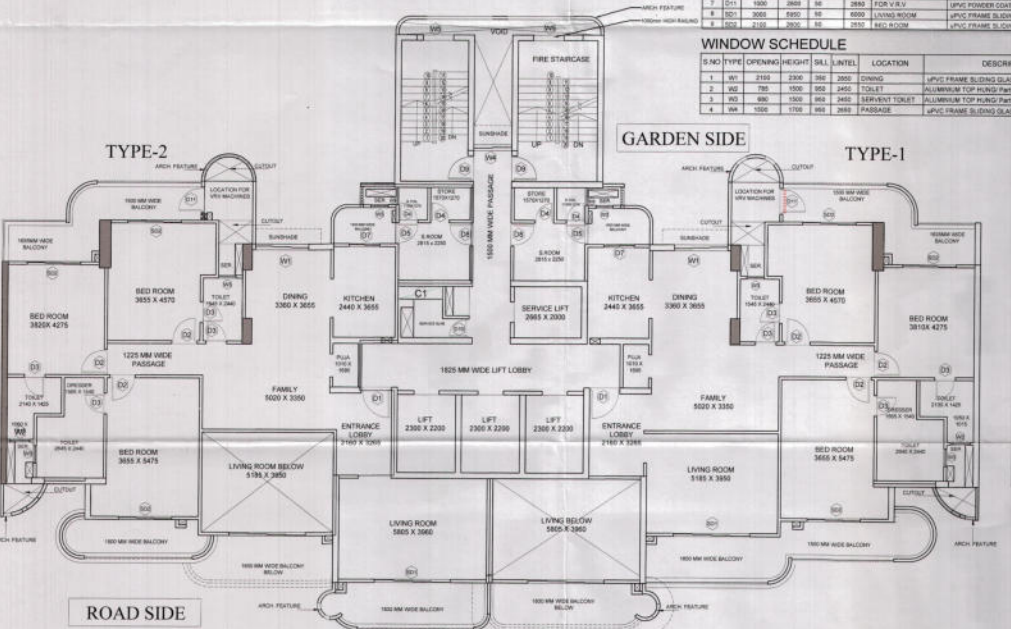
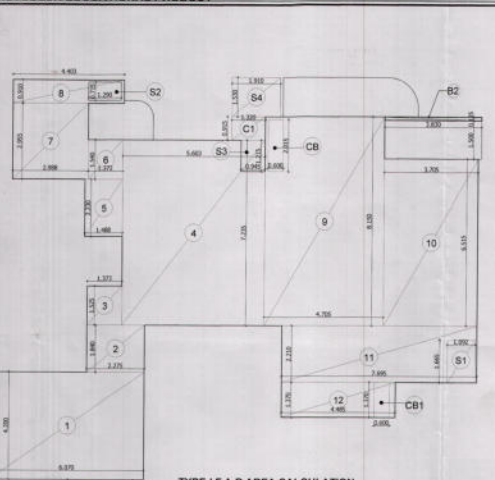


TYPICAL FLOOR PLAN (3 BHK LARGE)
(3,5,7,9,11,13,15,17,19,21,23,25,27,29)



TYPICAL FLOOR PLAN (3 BHK LARGE)
(2,4,6,8,10,12,14,16,18,20,22,24,26,28)



TYPE-I F.A.R. AREA CALCULATION
3BHK LARGE BLOCK-T2

TYPICAL FLOOR F.A.R. AREA CALCULATION
CHART UNIT TYPE-I 3BHK LARGE BLOCK-T2

ITEM	WIDTH	LENGTH	NO	AREA-SQ.M	
1	8.070	X	4.200	=	33.894
2	2.270	X	1.040	=	2.360
3	1.570	X	1.000	=	1.570
4	8.850	X	7.200	=	63.720
5	1.450	X	2.200	=	3.190
6	3.370	X	1.740	=	5.864
7	2.850	X	2.550	=	7.268
8	4.400	X	0.910	=	4.007
9	4.700	X	0.700	=	3.290
10	4.000	X	0.250	=	1.000
11	3.700	X	0.810	=	3.000
12	7.800	X	2.270	=	17.506
13	4.000	X	0.250	=	1.000
14	3.940	X	1.250	=	4.925
15	3.700	X	0.810	=	3.000
16	3.850	X	0.150	=	0.578
17	3.850	X	0.150	=	0.578
18	3.850	X	0.150	=	0.578
19	3.850	X	0.150	=	0.578
20	3.850	X	0.150	=	0.578
21	3.850	X	0.150	=	0.578
22	3.850	X	0.150	=	0.578
23	3.850	X	0.150	=	0.578
24	3.850	X	0.150	=	0.578
25	3.850	X	0.150	=	0.578
26	3.850	X	0.150	=	0.578
27	3.850	X	0.150	=	0.578
28	3.850	X	0.150	=	0.578
29	3.850	X	0.150	=	0.578
30	3.850	X	0.150	=	0.578
31	3.850	X	0.150	=	0.578
32	3.850	X	0.150	=	0.578
33	3.850	X	0.150	=	0.578
34	3.850	X	0.150	=	0.578
35	3.850	X	0.150	=	0.578
36	3.850	X	0.150	=	0.578
37	3.850	X	0.150	=	0.578
38	3.850	X	0.150	=	0.578
39	3.850	X	0.150	=	0.578
40	3.850	X	0.150	=	0.578
41	3.850	X	0.150	=	0.578
42	3.850	X	0.150	=	0.578
43	3.850	X	0.150	=	0.578
44	3.850	X	0.150	=	0.578
45	3.850	X	0.150	=	0.578
46	3.850	X	0.150	=	0.578
47	3.850	X	0.150	=	0.578
48	3.850	X	0.150	=	0.578
49	3.850	X	0.150	=	0.578
50	3.850	X	0.150	=	0.578
51	3.850	X	0.150	=	0.578
52	3.850	X	0.150	=	0.578
53	3.850	X	0.150	=	0.578
54	3.850	X	0.150	=	0.578
55	3.850	X	0.150	=	0.578
56	3.850	X	0.150	=	0.578
57	3.850	X	0.150	=	0.578
58	3.850	X	0.150	=	0.578
59	3.850	X	0.150	=	0.578
60	3.850	X	0.150	=	0.578
61	3.850	X	0.150	=	0.578
62	3.850	X	0.150	=	0.578
63	3.850	X	0.150	=	0.578
64	3.850	X	0.150	=	0.578
65	3.850	X	0.150	=	0.578
66	3.850	X	0.150	=	0.578
67	3.850	X	0.150	=	0.578
68	3.850	X	0.150	=	0.578
69	3.850	X	0.150	=	0.578
70	3.850	X	0.150	=	0.578
71	3.850	X	0.150	=	0.578
72	3.850	X	0.150	=	0.578
73	3.850	X	0.150	=	0.578
74	3.850	X	0.150	=	0.578
75	3.850	X	0.150	=	0.578
76	3.850	X	0.150	=	0.578
77	3.850	X	0.150	=	0.578
78	3.850	X	0.150	=	0.578
79	3.850	X	0.150	=	0.578
80	3.850	X	0.150	=	0.578
81	3.850	X	0.150	=	0.578
82	3.850	X	0.150	=	0.578
83	3.850	X	0.150	=	0.578
84	3.850	X	0.150	=	0.578
85	3.850	X	0.150	=	0.578
86	3.850	X	0.150	=	0.578
87	3.850	X	0.150	=	0.578
88	3.850	X	0.150	=	0.578
89	3.850	X	0.150	=	0.578
90	3.850	X	0.150	=	0.578
91	3.850	X	0.150	=	0.578
92	3.850	X	0.150	=	0.578
93	3.850	X	0.150	=	0.578
94	3.850	X	0.150	=	0.578
95	3.850	X	0.150	=	0.578
96	3.850	X	0.150	=	0.578
97	3.850	X	0.150	=	0.578
98	3.850	X	0.150	=	0.578
99	3.850	X	0.150	=	0.578
100	3.850	X	0.150	=	0.578
101	3.850	X	0.150	=	0.578
102	3.850	X	0.150	=	0.578
103	3.850	X	0.150	=	0.578
104	3.850	X	0.150	=	0.578
105	3.850	X	0.150	=	0.578
106	3.850	X	0.150	=	0.578
107	3.850	X	0.150	=	0.578
108	3.850	X	0.150	=	0.578
109	3.850	X	0.150	=	0.578
110	3.850	X	0.150	=	0.578
111	3.850	X	0.150	=	0.578
112	3.850	X	0.150	=	0.578
113	3.850	X	0.150	=	0.578
114	3.850	X	0.150	=	0.578
115	3.850	X	0.150	=	0.578
116	3.850	X	0.150	=	0.578
117	3.850	X	0.150	=	0.578
118	3.850	X	0.150	=	0.578
119	3.850	X	0.150	=	0.578
120	3.850	X	0.150	=	0.578
121	3.850	X	0.150	=	0.578
122	3.850	X	0.150	=	0.578
123	3.850	X	0.150	=	0.578
124	3.850	X	0.150	=	0.578
125	3.850	X	0.150	=	0.578
126	3.850	X	0.150	=	0.578
127	3.850	X	0.150	=	0.578
128	3.850	X	0.150	=	0.578
129	3.850	X	0.150	=	0.578
130	3.850	X	0.150	=	0.578
131	3.850	X	0.150	=	0.578
132	3.850	X	0.150	=	0.578
133	3.850	X	0.150	=	0.578
134	3.850	X	0.150	=	0.578
135	3.850	X	0.150	=	0.578
136	3.850	X	0.150	=	0.578
137	3.850	X	0.150	=	0.578
138	3.850	X	0.150	=	0.578
139	3.850	X	0.150	=	0.578
140	3.850	X	0.150	=	0.578
141	3.850	X	0.150	=	0.578
142	3.850	X	0.150	=	0.578
143	3.850	X	0.150	=	0.578
144	3.850	X	0.150	=	0.578
145	3.850	X	0.150	=	0.578
146	3.850	X	0.150	=	0.578
147	3.850	X	0.150	=	0.578
148	3.850	X	0.150	=	0.578
149	3.850	X	0.150	=	0.578
150	3.850	X	0.150	=	0.578
151	3.850	X	0.150	=	0.578
152	3.850	X	0.150	=	0.578
153	3.850	X	0.150	=	0.578
154	3.850	X	0.150	=	0.578
155	3.850	X	0.150	=	0.578
156	3.850	X	0.150	=	0.578
157	3.850	X	0.150	=	0.578
158	3.850	X	0.150	=	0.578
159	3.850	X	0.150	=	0.578
160	3.850	X	0.150	=	0.578
161	3.850	X	0.150	=	0.578
162	3.850	X	0.150	=	0.578
163	3.850	X	0.150	=	0.578
164	3.850	X	0.150	=	0.578
165	3.850	X	0.150	=	0.578
166	3.850	X	0.150	=	0.578
167	3.850	X	0.150	=	0.578
168	3.850	X	0.150	=	0.578
169	3.850	X	0.150	=	0.578
170	3.850	X	0.150	=	0.578
171	3.850	X	0.150	=	0.578
172	3.850	X	0.150	=	0.578
173	3.850	X	0.150	=	0.578
174	3.850	X	0.150	=	0.578
175	3.850	X	0.150	=	0.578
176	3.850	X	0.150	=	0.578
177	3.850	X	0.150	=	0.578
178	3.850	X	0.150	=	0.578
179	3.850	X	0.150	=	0.578
180	3.850	X	0.150	=	0.578
181	3.850	X	0.150	=	0.578
182	3.850	X	0.150	=	0.578
183	3.850	X	0.150	=	0.578
184	3.850	X	0.150	=	0.578
185	3.850	X	0.150	=	0.578
186	3.850	X	0.150	=	0.578
187	3.850	X	0.150	=	0.578
188	3.850	X	0.150	=	0.578
189	3.850	X	0.150	=	0.578
190	3.850	X	0.150	=	0.578
191	3.850	X	0.150	=	0.578
192	3.850	X	0.150	=	0.578
193	3.850	X	0.150	=	0.578
194	3.850	X	0.150	=	0.578
195	3.850	X	0.150	=	0.578
196	3.850	X	0.150	=	0.578
197	3.850	X	0.150	=	0.578
198	3.850	X	0.150	=	0.578