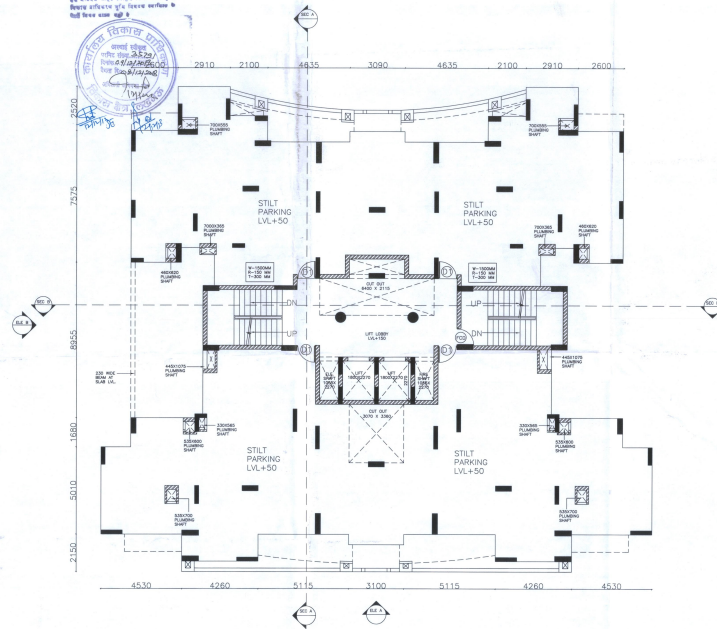


श्रीमन् - श्री 1/18 पर भूमि  
प्रमाणित आ मालग नगर केसा

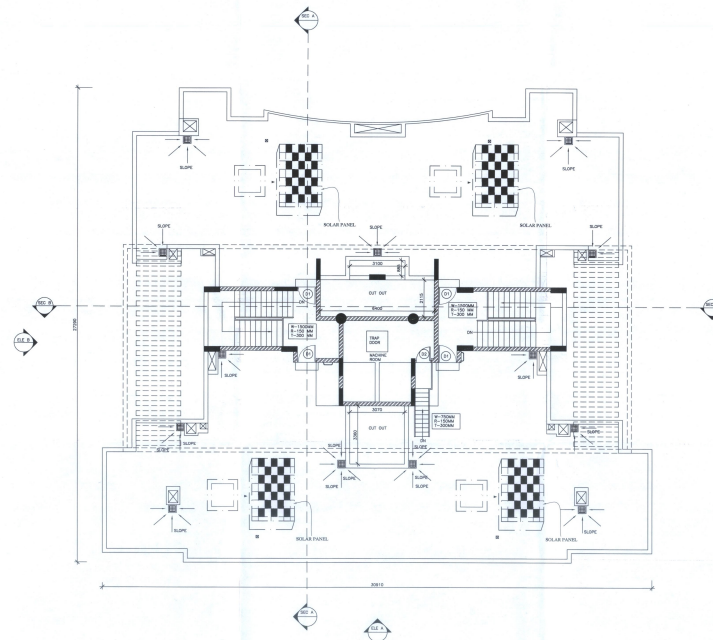
सर्व मानचित्र कानून 1988 के अन्तर्गत  
सर्व मानचित्र 1972 के अन्तर्गत 18 & 19  
सर्व मानचित्र 1972 के अन्तर्गत 18 & 19  
सर्व मानचित्र 1972 के अन्तर्गत 18 & 19



STILT FLOOR PLAN, SCALE 1:100



GROUND FLOOR PLAN, SCALE 1:100



STILT FLOOR PLAN, SCALE 1:100

This drawing is a "COPYRIGHT" contents  
of this drawing or part thereof may  
not be used or reproduced without the  
permission of the Architect

NORTH

DOOR WINDOW SCHEDULE					
S.No.	IN/OUT	Size	SW (mm)	TYPE	
1	IN	1000x2000	0	2000	OPENABLE
2	IN	1000x2000	0	2000	OPENABLE
3	IN	1000x2000	0	2000	OPENABLE
4	IN	1000x2000	0	2000	OPENABLE
5	IN	1000x2000	0	2000	OPENABLE
6	IN	1000x2000	0	2000	OPENABLE
7	IN	1000x2000	0	2000	OPENABLE
8	IN	1000x2000	0	2000	OPENABLE
9	IN	1000x2000	0	2000	OPENABLE
10	IN	1000x2000	0	2000	OPENABLE
11	IN	1000x2000	0	2000	OPENABLE
12	IN	1000x2000	0	2000	OPENABLE
13	IN	1000x2000	0	2000	OPENABLE
14	IN	1000x2000	0	2000	OPENABLE
15	IN	1000x2000	0	2000	OPENABLE
16	IN	1000x2000	0	2000	OPENABLE
17	IN	1000x2000	0	2000	OPENABLE

यह मानचित्र लखनऊ महानगर 2021 तथा नगर  
उपविधि 2008 तथा सम्पत्त सार्वजनिक के अनुसार तैयार  
किया गया है।

## PROJECT

PROPOSED GROUP HOUSING AT KHASRA NO.  
182P, 183P, 184P IN VILLAGE ARDANAMAU &  
KHASRA NO. 18P, 19, 20, 21, 22P, 23, 24P, 25P, 44P &  
45P IN VILLAGE AHIMAMAU AT GOMTINAGAR  
EXTENSION - LUCKNOW

## DRAWING TITLE

SUBMISSION DRAWING  
BLOCK-A  
(FLOOR PLANS)

DEALT BY

PUNEET

SCALE

AS SHOWN

OWNER'S NAME:

PAARTH Infrabuild Pvt.Ltd. and Other's

ARCHITECT  
RUDRABHISHEK  
ENTERPRISES PVT. LTD.  
TOWN & COUNTRY PLANNERS,  
ARCHITECTS & INTERIOR  
DESIGNERS,  
SURVEY CIVIC SERVICES  
DESIGNERS,  
GROUND FLOOR, YUNA BHAWAN,  
YMCA COMPLEX, 13 RANA  
PRATAP MARG LUCKNOW,  
CALL - (0522) 2206165

PROJECT DEVELOPED BY:-  
M/s PAARTH  
INFRABUILD PVT. LTD.

PAARTH KUMAR  
Architect  
Regd. No. C-1707050491

PAARTH KUMAR  
Architect  
Regd. No. C-1707050491

DRAWING NUMBER

GH/PAARTH/SUB- 5