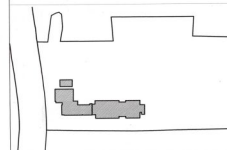


This drawing is a "COPYRIGHT" contents of this drawing or part thereof may not be used or reproduced without the permission of the Architect



KEY PLAN
N.T.S

DOOR WINDOW SCHEDULE			
DESCRIPTION	SIZE	CILL LEVEL	LINTEL LEVEL
D	2000	-	2150
D1	1500	-	2150
D2	900	-	2150
D3	750	-	2150
D4	1100	-	2150
DW1	3000	600	2150
SL	2500	-	2150
W1	3500	600	2150
W2	1500	600	2150
W3	2000	600	2150
W4	5715X1800	600	2150
D/W	2400	600	2150
S/D	2000X2100	-	2150
SL1	2400	-	2150
V1	1000	1500	2150
V2	750	1500	2150
FCD	1500	-	2150

यह मानचित्र लखनऊ महानगरपालिका 2021 तथा भारत उपविधि 2008 तथा सम्बन्धित कानून के अनुसार तैयार किया गया है।

PROJECT
PROPOSED HOTEL/SERVICE APARTMENT AT
VILLAGE AHIMAMAU AT GOMTINAGAR
EXTENSION - LUCKNOW

DRAWING TITLE
SUBMISSION DRAWING
FLOOR PLANS

DEALT BY GEETA	ARCHITECT RAJENDRA	REVISION
SCALE 1:200	CHECKED BY VIRESH KUMAR	DATE JULY 2015

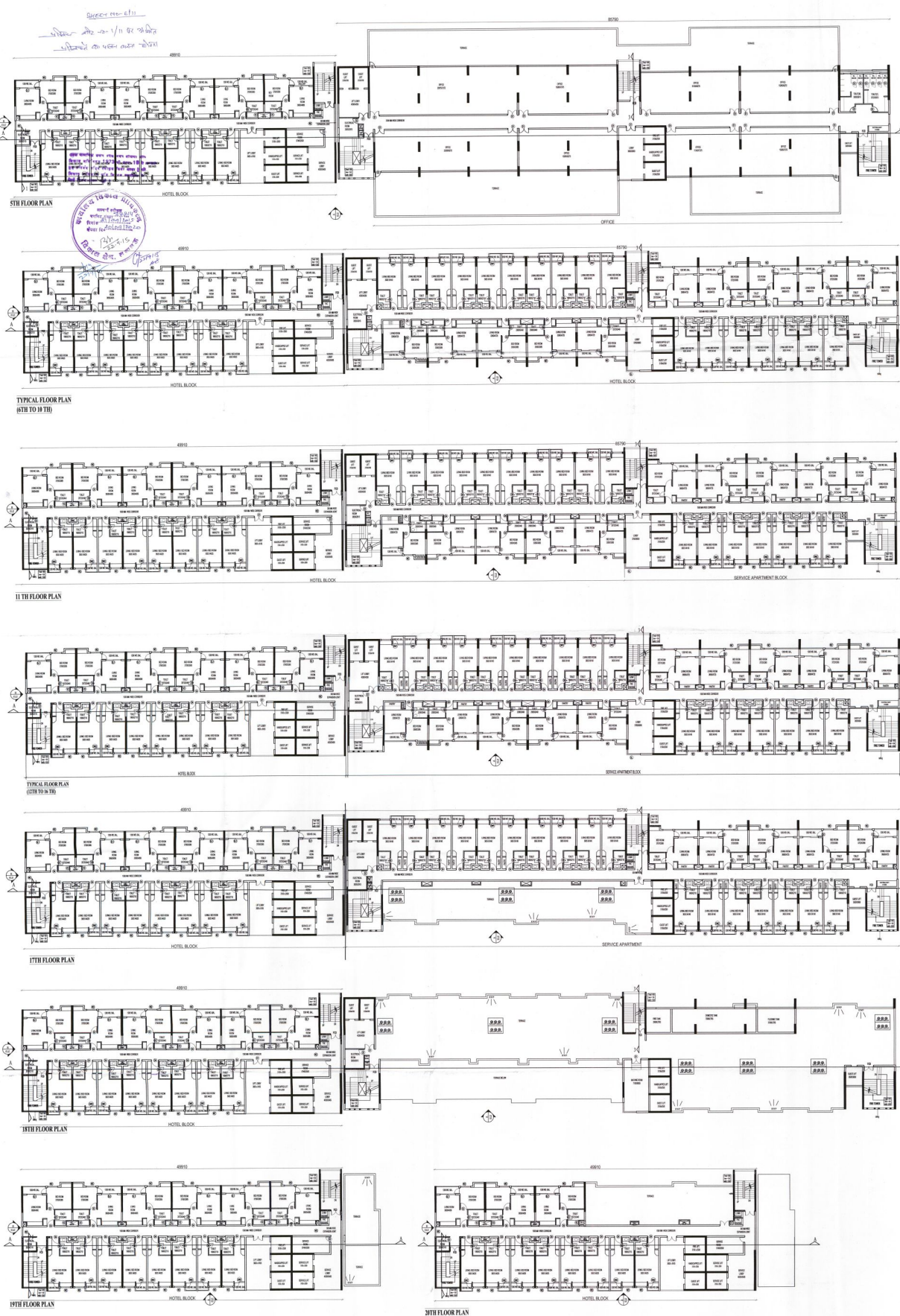
OWNER'S NAME:
PAARTH Infrabuild Pvt. Ltd. and Other's

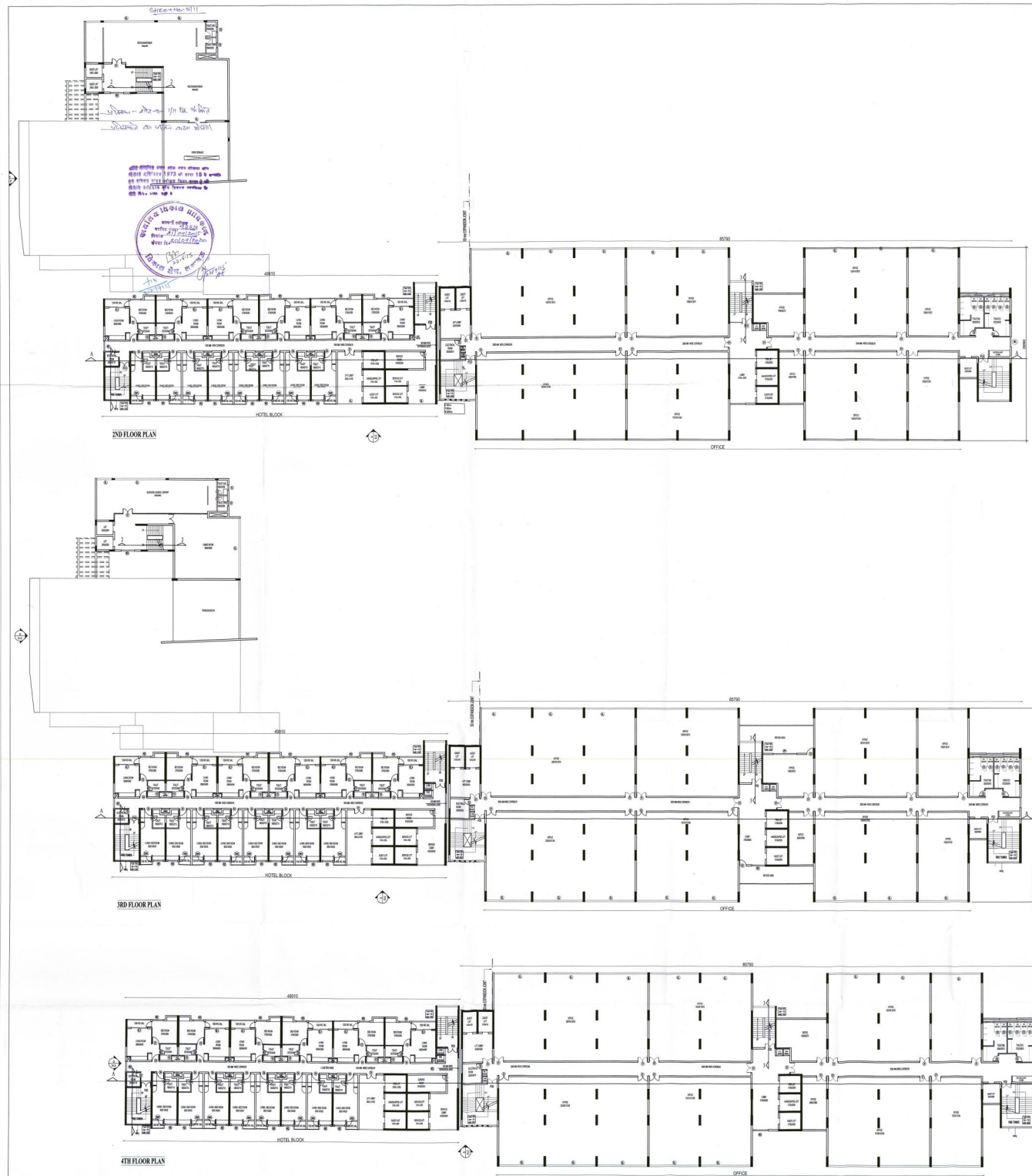
ARCHITECT

RAD
RUDRABHISHEK ARCHITECTS
AND DESIGNERS
A-6 Sector 58 Noida

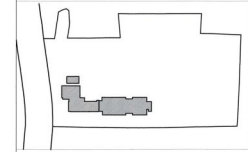
<p>ARCHITECT RUDRABHISHEK ENTERPRISES PVT. LTD. TOWN & COUNTRY PLANNERS, ARCHITECTS & INTERIOR DESIGNERS, SURVEY CIVIL SERVICES DESIGNERS GROUND FLOOR, YUVA BHAWAN, YMCA COMPLEX, 13 RANA PRATAP MARG, LUCKNOW, CALL - (0522) 2206165</p>	<p>PROJECT DEVELOPED BY:- M/s PAARTH INFRABUILD PVT. LTD. For Paarth Infrabuild Pvt. Ltd. Authorized Signatory</p>
--	--

DRAWING NUMBER
PAARTH/SUB-6/11





This drawing is a "COPYRIGHT" contents of this drawing or part thereof may not be used or reproduced without the permission of the Architect.



KEY PLAN
N.T.S

DOOR WINDOW SCHEDULE			
DESCRIPTION	SIZE	CILL LEVEL	LINTEL LEVEL
D	2000	-	2150
D1	1500	-	2150
D2	900	-	2150
D3	750	-	2150
D4	1100	-	2150
DW1	3000	600	2150
SL	2500	-	2150
W1	3500	600	2150
W2	1500	600	2150
W3	2000	600	2150
W4	5715X1800	600	2150
D/W	2400	600	2150
S/D	2000X2100	-	2150
SL1	2400	-	2150
V1	1000	1500	2150
V2	750	1500	2150
FCD	1500	-	2150

यह मानचित्र लखनऊ महाराष्ट्र 2021 तथा भवन
उपविधि 2008 तथा संयुक्त शासनादेश के अनुसार
तैयार किया गया है।

PROJECT
PROPOSED HOTEL/ SERVICE APARTMENT AT
VILLAGE AHIMAMAU AT GOMTI NAGAR
EXTENSION - LUCKNOW

DRAWING TITLE
SUBMISSION DRAWING
FLOOR PLANS

DEALT BY GEETA	ARCHITECT RAJENDRA	REVISION
SCALE 1:200	CHECKED BY VIRESH KUMAR	DATE JULY 2015

OWNER'S NAME:
PAARTH Infrabuild Pvt.Ltd. and Others

ARCHITECT
RAD
RUDRABHISHEK ARCHITECTS
AND DESIGNERS
A-6 Sector 58 Noida

ARCHITECT
RUDRABHISHEK
ENTERPRISES PVT. LTD.
TOWN & COUNTRY PLANNERS,
ARCHITECTS & INTERIOR
DESIGNERS
SURVEY CIVIC SERVICES
DESIGNERS
GROUND FLOOR, YUVA BHAVAN,
YMCA COMPLEX, 13 RANA
PRATAP MARG LUCKNOW.
CALL - (0522) 2206185

PROJECT DEVELOPED BY:-
M/s PAARTH
INFRABUILD PVT. LTD.

Viresh Kumar
VIRESH KUMAR
Project No. CA/2009/05041

For Infrabuild Pvt. Ltd.
Authorized Signature

DRAWING NUMBER
PAARTH/SUB-5/11