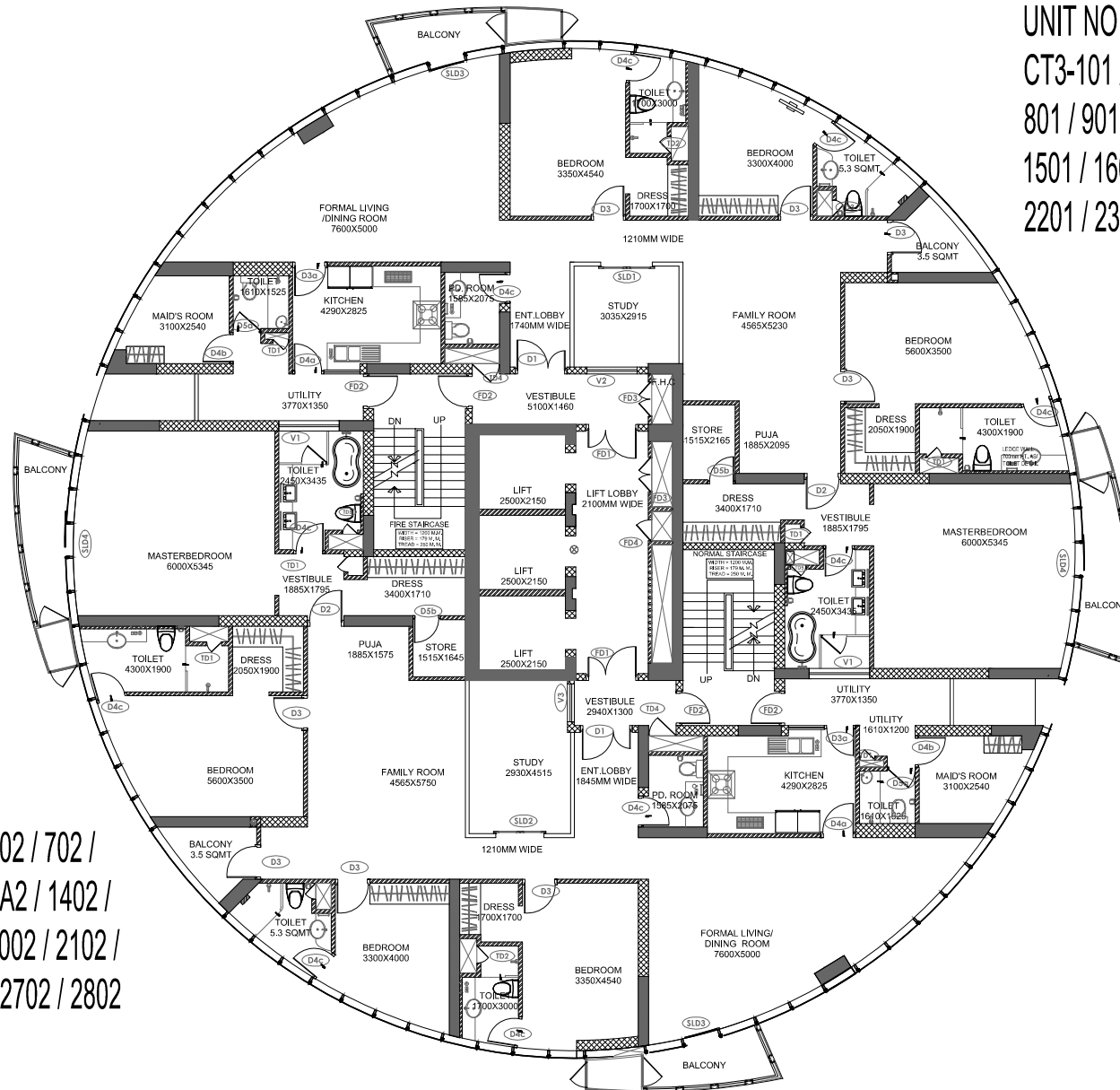


UNIT NO.:

CT3-101 / 201 / 301 / 401 / 501 / 601 / 701 /  
801 / 901 / 1001 / 1101 / 1201 / 12A1 / 1401 /  
1501 / 1601 / 1701 / 1801 / 1901 / 2001 / 2101 /  
2201 / 2301 / 2401 / 2501 / 2601 / 2701 / 2801

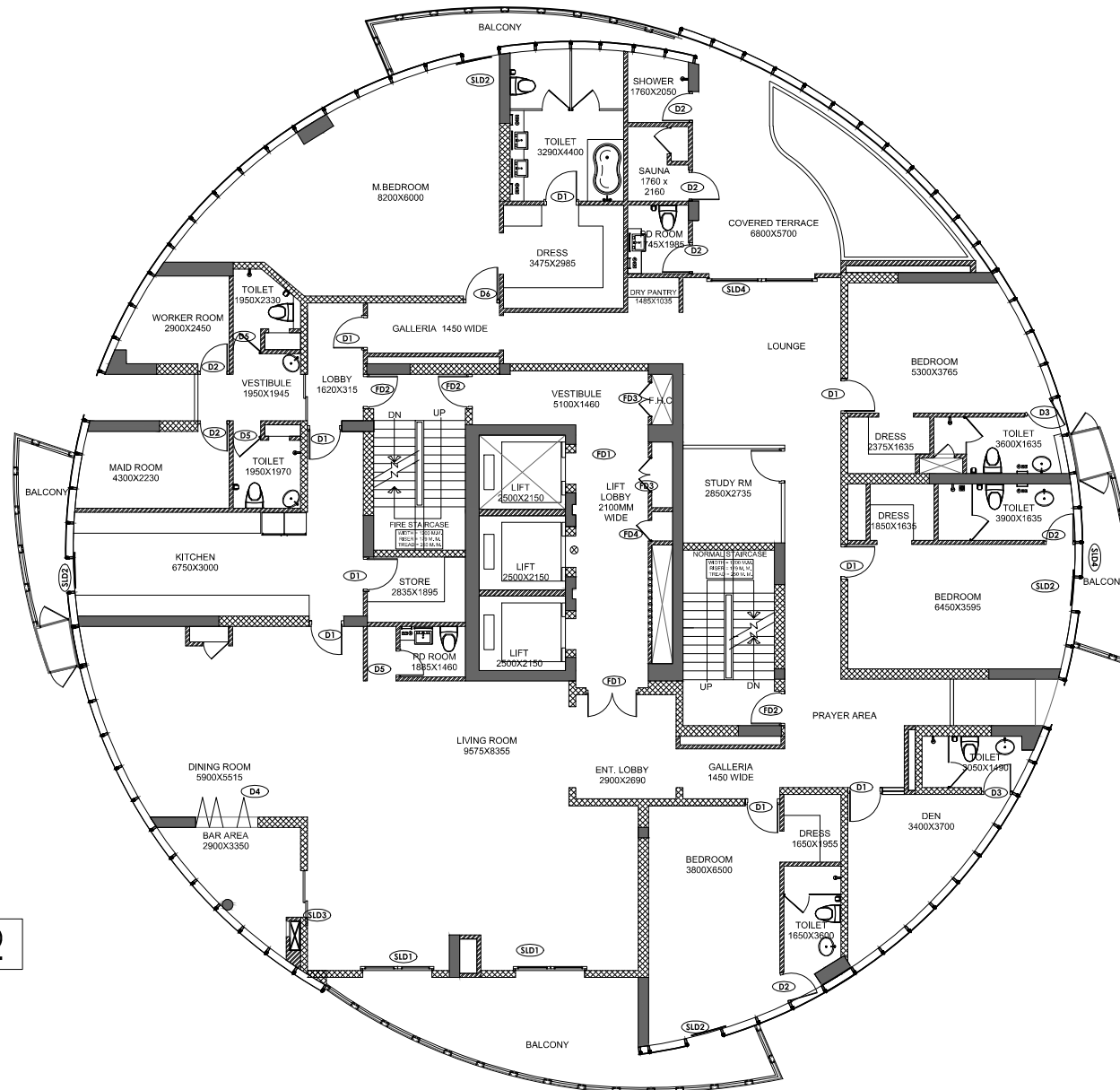


UNIT NO.:

CT3-102 / 202 / 302 / 402 / 502 / 602 / 702 /  
802 / 902 / 1002 / 1102 / 1202 / 12A2 / 1402 /  
1502 / 1602 / 1702 / 1802 / 1902 / 2002 / 2102 /  
2202 / 2302 / 2402 / 2502 / 2602 / 2702 / 2802

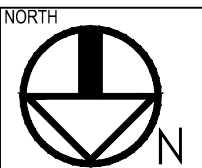
TYPICAL FLOOR PLAN ( 1st - 28th )

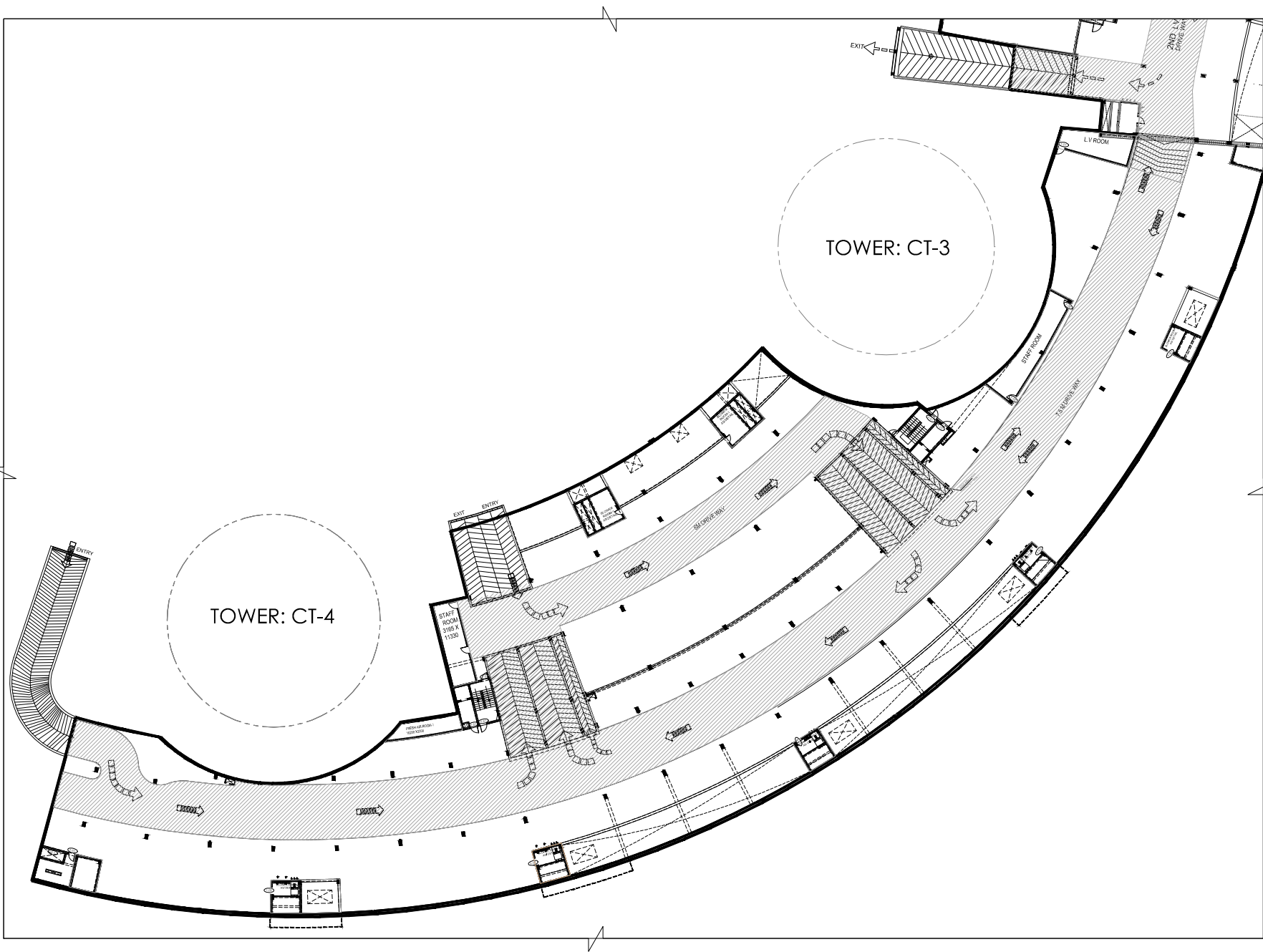




UNIT NO. - CT3 - PH01 / PH02

TYPICAL FLOOR PLAN ( 29th - 30th )





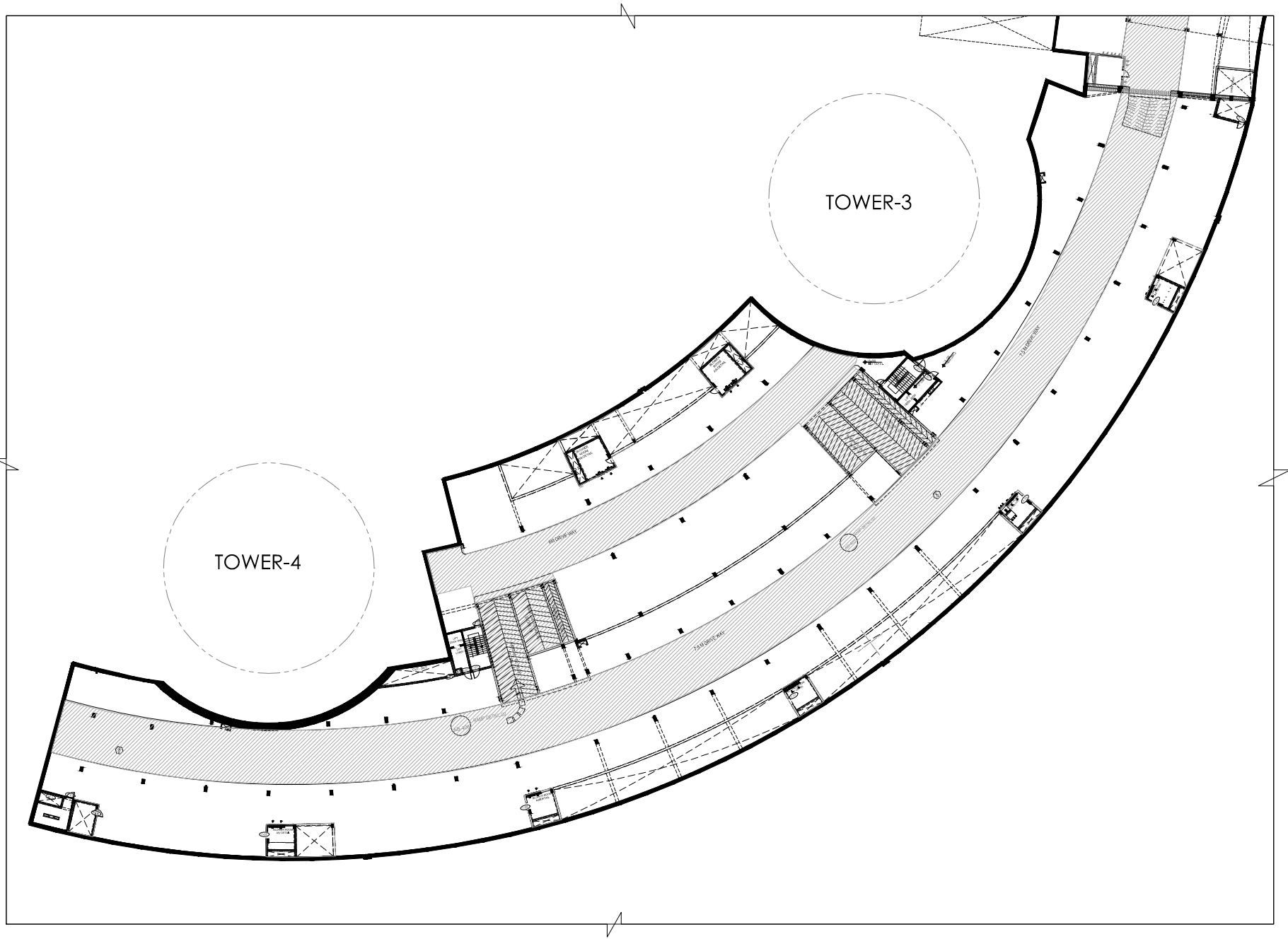
# UPPER BASEMENT PLAN

## UPPER BASEMENT + LOWER BASEMENT CAR PARKING DETAILS

1. TOTAL NO. OF COVERED CAR PARKING SLOTS / GARAGES CONSTRUCTED
2. CAR PARKING SLOTS / GARAGES RESERVED FOR ALLOTMENT TO UNITS
3. CAR PARKING SLOTS / GARAGES AVAILABLE AS INDEPENDENT AREA FOR SALE SUBSEQUENTLY

= 197 No.  
= 120 No.  
= 77 No.





**LOWER BASEMENT PLAN**

