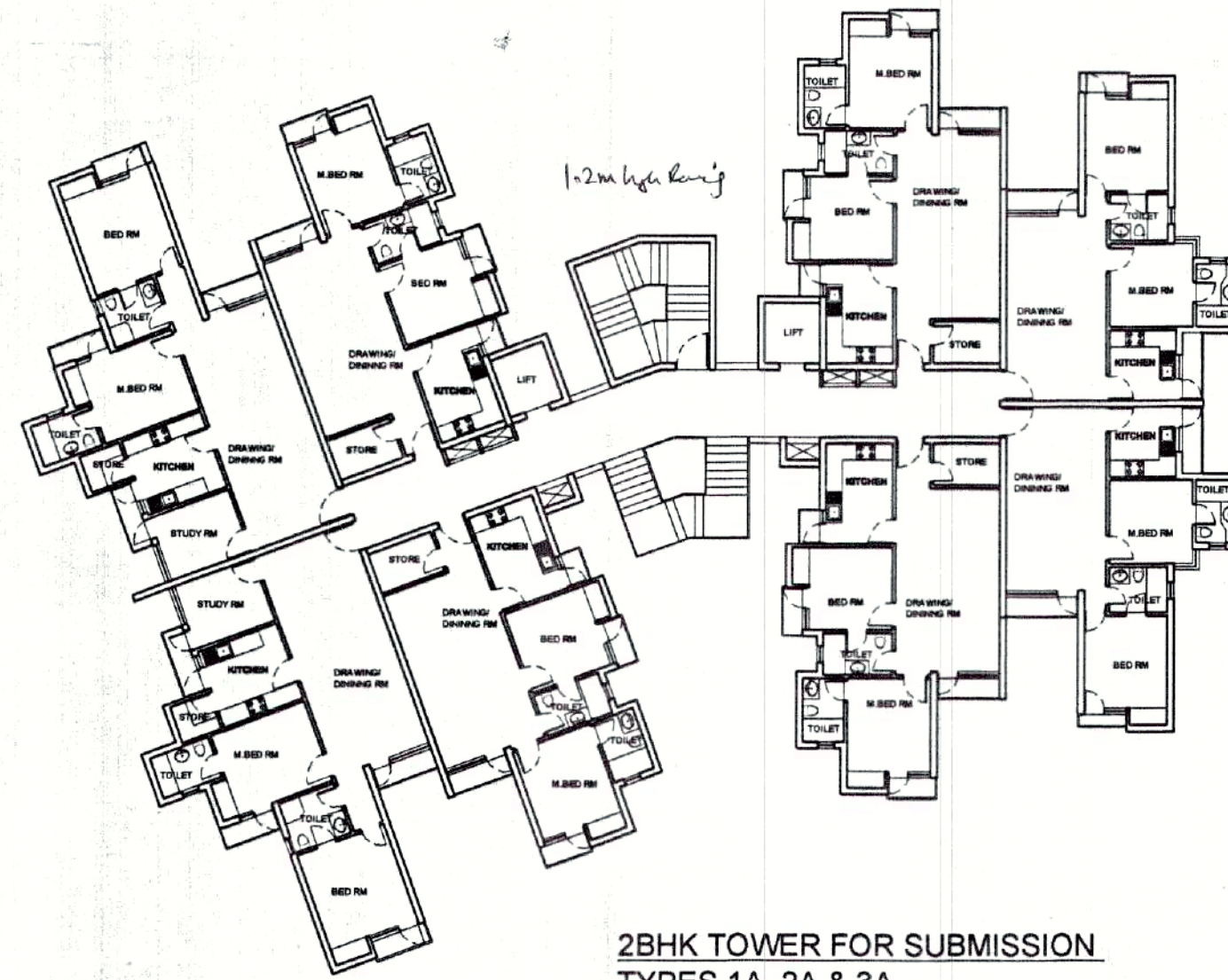
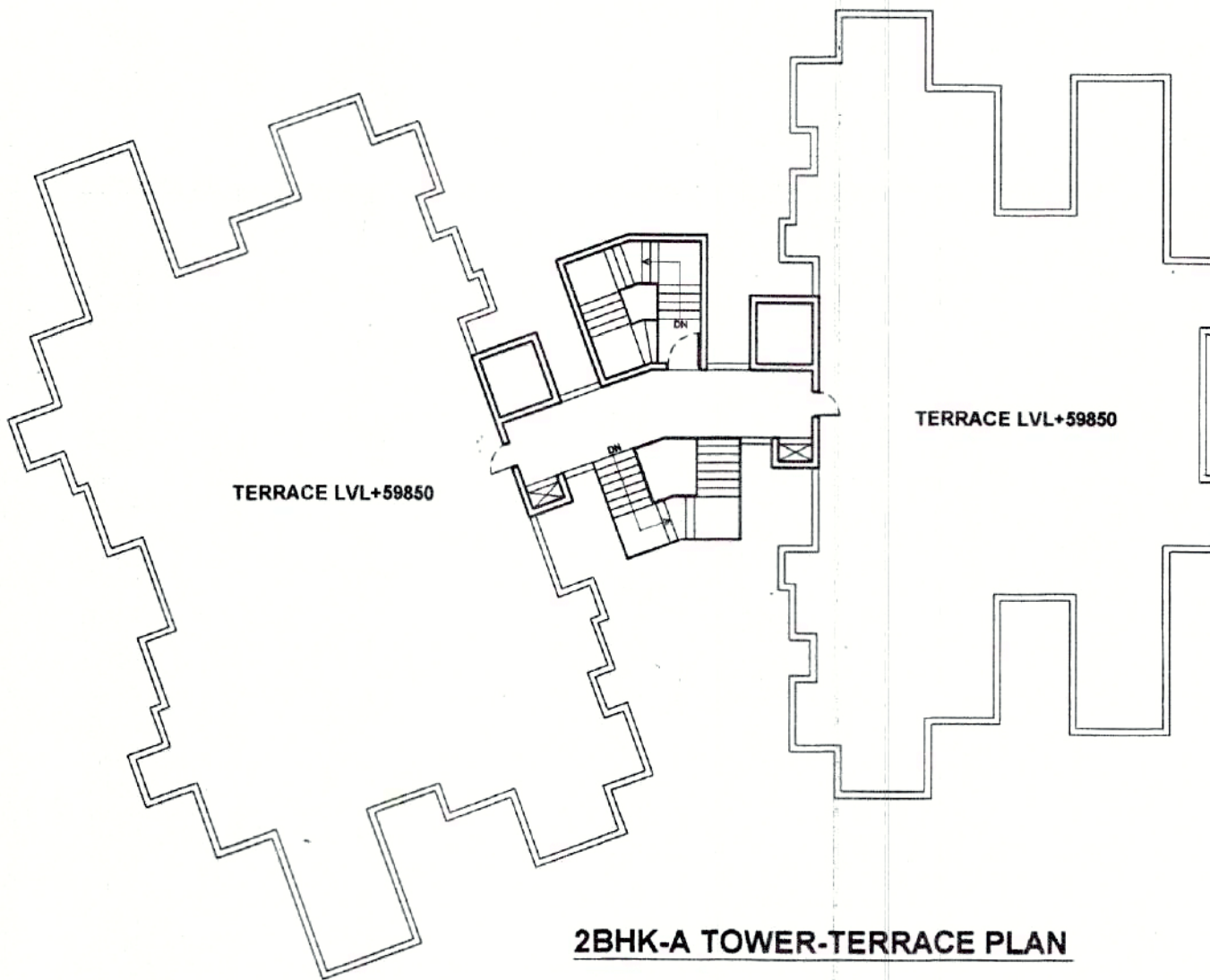


GROUND FLOOR PLAN



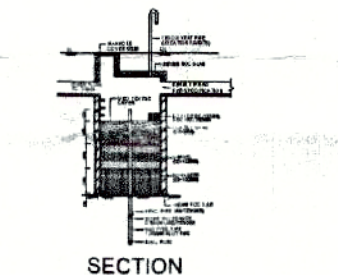
2BHK TOWER FOR SUBMISSION
TYPES 1A, 2A & 3A
TYPICAL FLOOR PLAN



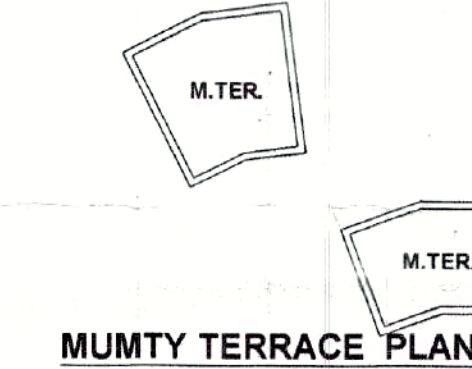
2BHK-A TOWER-TERRACE PLAN



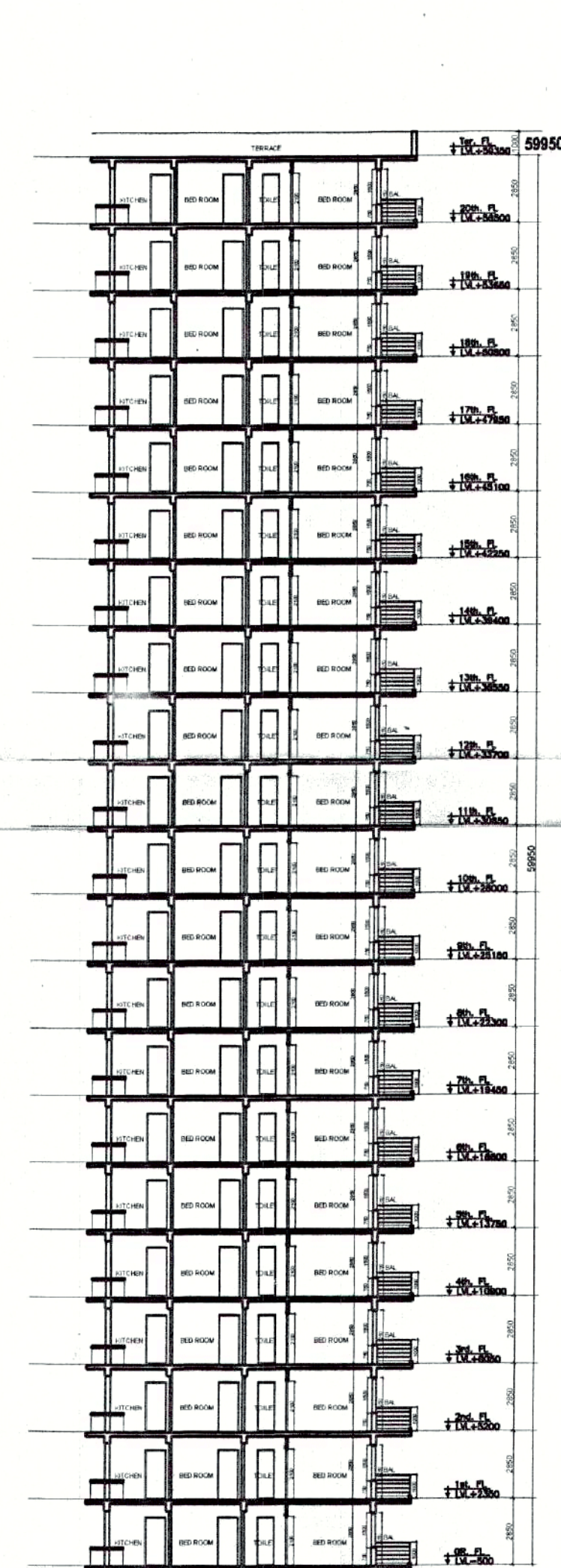
TYPICAL DETAIL OF RAIN WATER PIT



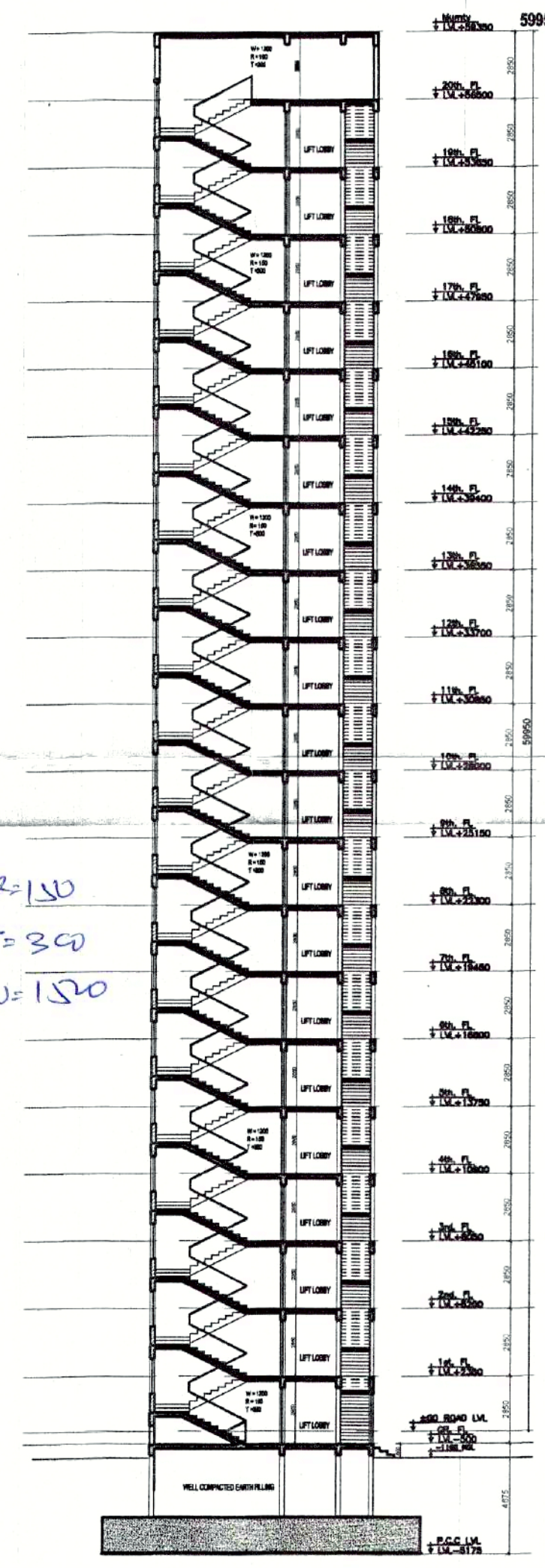
TYPICAL DETAIL OF RAIN WATER PIT



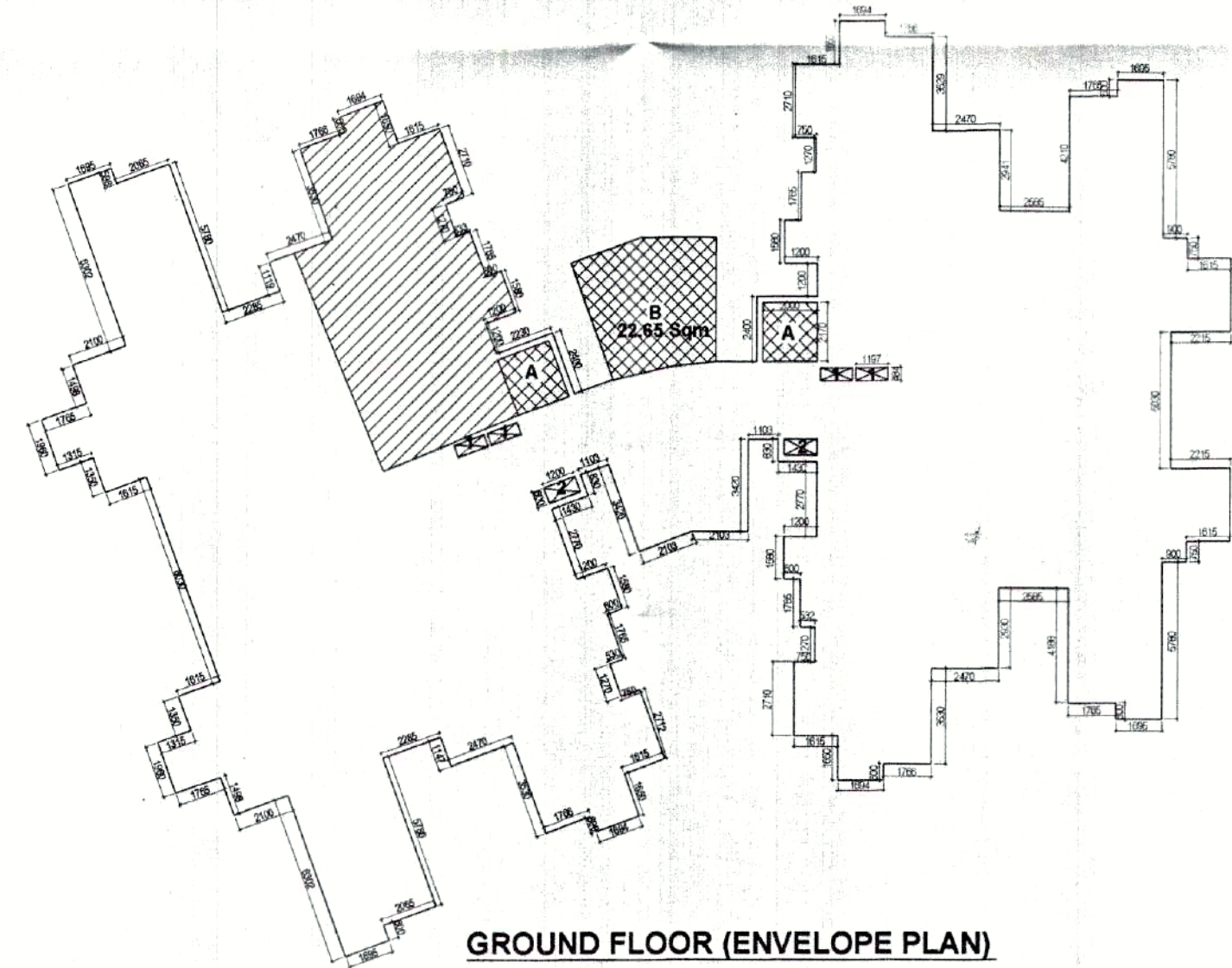
MUMTY TERRACE PLAN



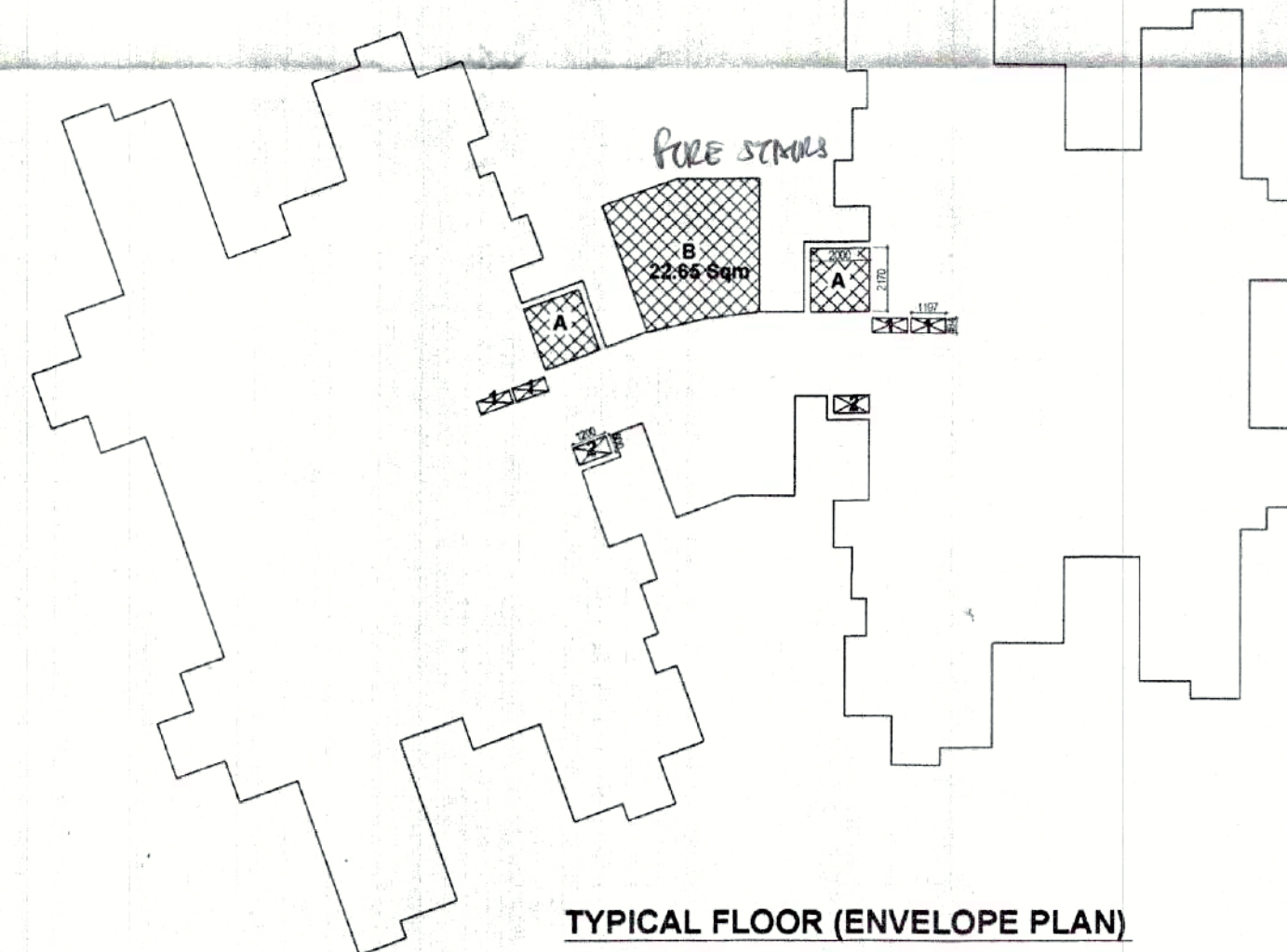
TYPICAL SECTION THRO' TOILET, KITCHEN & BALCONY



TYPICAL SECTION THRO' STAIRCASE



GROUND FLOOR (ENVELOPE PLAN)



TYPICAL FLOOR (ENVELOPE PLAN)

AREA CHART (2BHK TOWER)						
FLOORS	ENVELOPE AREA	CUTOUT AREA	COVD. AREA	SERVICES	STILT	F.A.R.
GROUND FLOOR	748.91 Sqm.	3.74 Sqm.	745.17 Sqm.	22.65 Sqm	73.01 Sqm	649.51 Sqm
1st FLOOR	748.91 Sqm.	3.74 Sqm.	745.17 Sqm.	31.33 Sqm	---	713.84 Sqm
2nd FLOOR	748.91 Sqm.	3.74 Sqm.	745.17 Sqm.	31.33 Sqm	---	713.84 Sqm
3rd FLOOR	748.91 Sqm.	3.74 Sqm.	745.17 Sqm.	31.33 Sqm	---	713.84 Sqm
4th FLOOR	748.91 Sqm.	3.74 Sqm.	745.17 Sqm.	31.33 Sqm	---	713.84 Sqm
5th FLOOR	748.91 Sqm.	3.74 Sqm.	745.17 Sqm.	31.33 Sqm	---	713.84 Sqm
6th FLOOR	748.91 Sqm.	3.74 Sqm.	745.17 Sqm.	31.33 Sqm	---	713.84 Sqm
7th FLOOR	748.91 Sqm.	3.74 Sqm.	745.17 Sqm.	31.33 Sqm	---	713.84 Sqm
8th FLOOR	748.91 Sqm.	3.74 Sqm.	745.17 Sqm.	31.33 Sqm	---	713.84 Sqm
9th FLOOR	748.91 Sqm.	3.74 Sqm.	745.17 Sqm.	31.33 Sqm	---	713.84 Sqm
10th FLOOR	748.91 Sqm.	3.74 Sqm.	745.17 Sqm.	31.33 Sqm	---	713.84 Sqm
11th FLOOR	748.91 Sqm.	3.74 Sqm.	745.17 Sqm.	31.33 Sqm	---	713.84 Sqm
12th FLOOR	748.91 Sqm.	3.74 Sqm.	745.17 Sqm.	31.33 Sqm	---	713.84 Sqm
13th FLOOR	748.91 Sqm.	3.74 Sqm.	745.17 Sqm.	31.33 Sqm	---	713.84 Sqm
14th FLOOR	748.91 Sqm.	3.74 Sqm.	745.17 Sqm.	31.33 Sqm	---	713.84 Sqm
15th FLOOR	748.91 Sqm.	3.74 Sqm.	745.17 Sqm.	31.33 Sqm	---	713.84 Sqm
16th FLOOR	748.91 Sqm.	3.74 Sqm.	745.17 Sqm.	31.33 Sqm	---	713.84 Sqm
17th FLOOR	748.91 Sqm.	3.74 Sqm.	745.17 Sqm.	31.33 Sqm	---	713.84 Sqm
18th FLOOR	748.91 Sqm.	3.74 Sqm.	745.17 Sqm.	31.33 Sqm	---	713.84 Sqm
19th FLOOR	748.91 Sqm.	3.74 Sqm.	745.17 Sqm.	31.33 Sqm	---	713.84 Sqm
20th FLOOR	748.91 Sqm.	3.74 Sqm.	745.17 Sqm.	31.33 Sqm	---	713.84 Sqm
MUMTY	40.34 Sqm.	---	40.34 Sqm.	40.34 Sqm.	---	---
TOTAL	15767.45 Sqm	78.54 Sqm.	15688.91 Sqm.	689.59 Sqm.	73.34 Sqm	14926.31 Sqm.
2BHK-A X 8	126139.6 Sqm	628.32 Sqm.	125511.28 Sqm.	5516.72 Sqm.	586.72 Sqm	119410.48 Sqm.

REMARKS

AREA CHART

CUTOUT

1. $1.197 \times .484 = .58 \times 4 = 2.3 \text{ Sqm}$

2. $1.2 \times .6 = .72 \times 2 = 1.44 \text{ Sqm}$

TOTAL = $2.3 + 1.44 = 3.74 \text{ Sqm}$

SEVICES

A. $2.0 \times 2.17 = 4.34 \times 2 = 8.68 \text{ Sqm}$

B. 22.65 Sqm

TOTAL = $8.68 + 22.65 = 31.33 \text{ Sqm}$

NO. OF D.U

$20 \times 8 = 160$

$1 \times 7 = 7$

TOTAL FLAT = 167 PER TOWER

NO OF SQ = $2 \times 21 = 42$ /TOWER
 $= 42 / 2 = 21$

NO OF D.U = 167 + 21

NO OF D.U = 188 PER TOWER

GROUND COVERAGE = 748.91×8
 $= 5991.28 \text{ Sqm}$

PROJECT

Proposed Group Housing Building on Plot No.- 2, SEC - 137 noida FOR

TITLE

SUBMISSION DRAWING (2BHK - A TOWER)

SCALE 1:100 & 1:200

DATE 04-02-10

JOB NO. 1064

DRG.NO. 05

ARCHITECTS SIGN

OWNERS SIGN

R.N. GUPTA
 02/07/2010

LOGIX INFRASTRUCTURE PVT. LTD.
 02/02/10

CONSULTANT

R.N.Gupta & Associates

Consulting Engineers, Architects & Valuers

E-1, Sector-55, Noida

Phones - (+120) 2582224, 2582773

Fax - (+120) 4321556

REMARKS
 1. All drawings should be submitted in duplicate.
 2. The drawings should be submitted in accordance with the provisions of the Building Bye-laws, Noida.
 3. The drawings should be submitted in accordance with the provisions of the Building Bye-laws, Noida.
 4. The drawings should be submitted in accordance with the provisions of the Building Bye-laws, Noida.
 5. The drawings should be submitted in accordance with the provisions of the Building Bye-laws, Noida.

AREA CHART
 CUTOUT
 $1.197 \times 484 = 58 \times 4 = 2.3 \text{ Sqm}$
 $2.12 \times 6 = 72 \times 2 = 144 \text{ Sqm}$
TOTAL = 2341.44 = 3174 Sqm
 Building Plan with 30.0m height is approved

SERVICES
 A. $2.20 \times 2.17 = 4.34 \times 2 = 8.68 \text{ Sqm}$
 B. 22.65 Sqm
TOTAL = 8.68 + 22.65 = 31.33 Sqm

NO. OF D.U
 20 X 8 = 160
 1 X 7 = 7
TOTAL FLAT = 167
 $\text{SQ} = 167 \times 1.5 = 250.5 \text{ PER TOWER}$
GROUND COVERAGE = 746.48 X 2 = 1492.96 Sqm

PROJECT
 Proposed Group Housing Building on Plot No.- 2, SEC - 137 noida FOR

TITLE
SUBMISSION DRAWING (2BHK TOWER)

SCALE 1:100 & 1:200 DATE 04-02-10

JOB NO. 1064 DRG.NO. 03

ARCHITECTS SIGN OWNERS SIGN

RAJIV GOEL
 CA/176/2361
 LOKESH INFRASTRUCTURE PVT. LTD.
 Director

CONSULTANT
R.N.Gupta & Associates
 Consulting Engineers, Architects & Valuers
 E-1, Sector-55, Noida
 Phones - (+120) 2582224, 2582773
 Fax - (+120) 4321556
 email - info@rngcorp.com

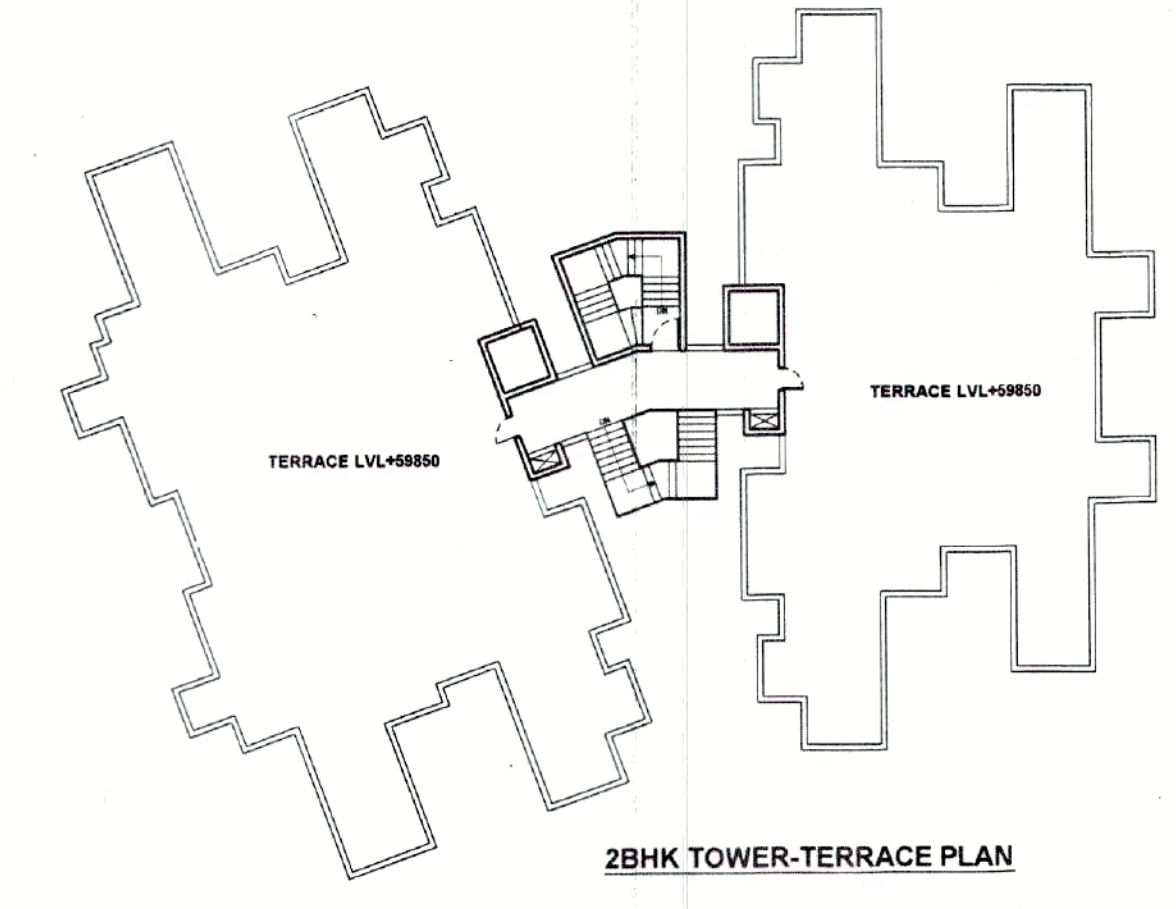
OUT SIDE ELEVATION-A



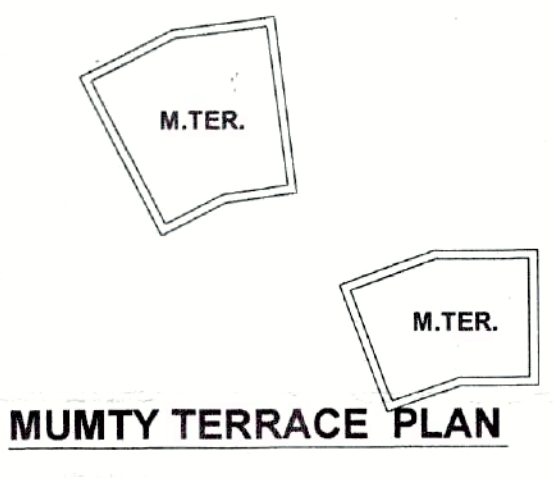
TYPICAL FLOOR



2BHK TOWER GROUND FLOOR



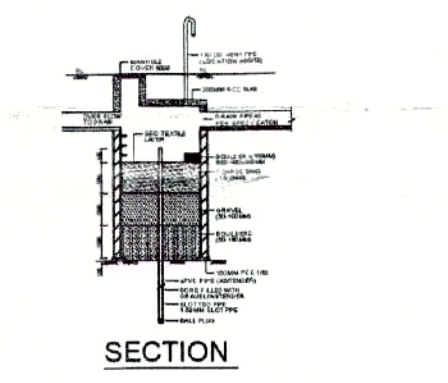
2BHK TOWER-TERRACE PLAN



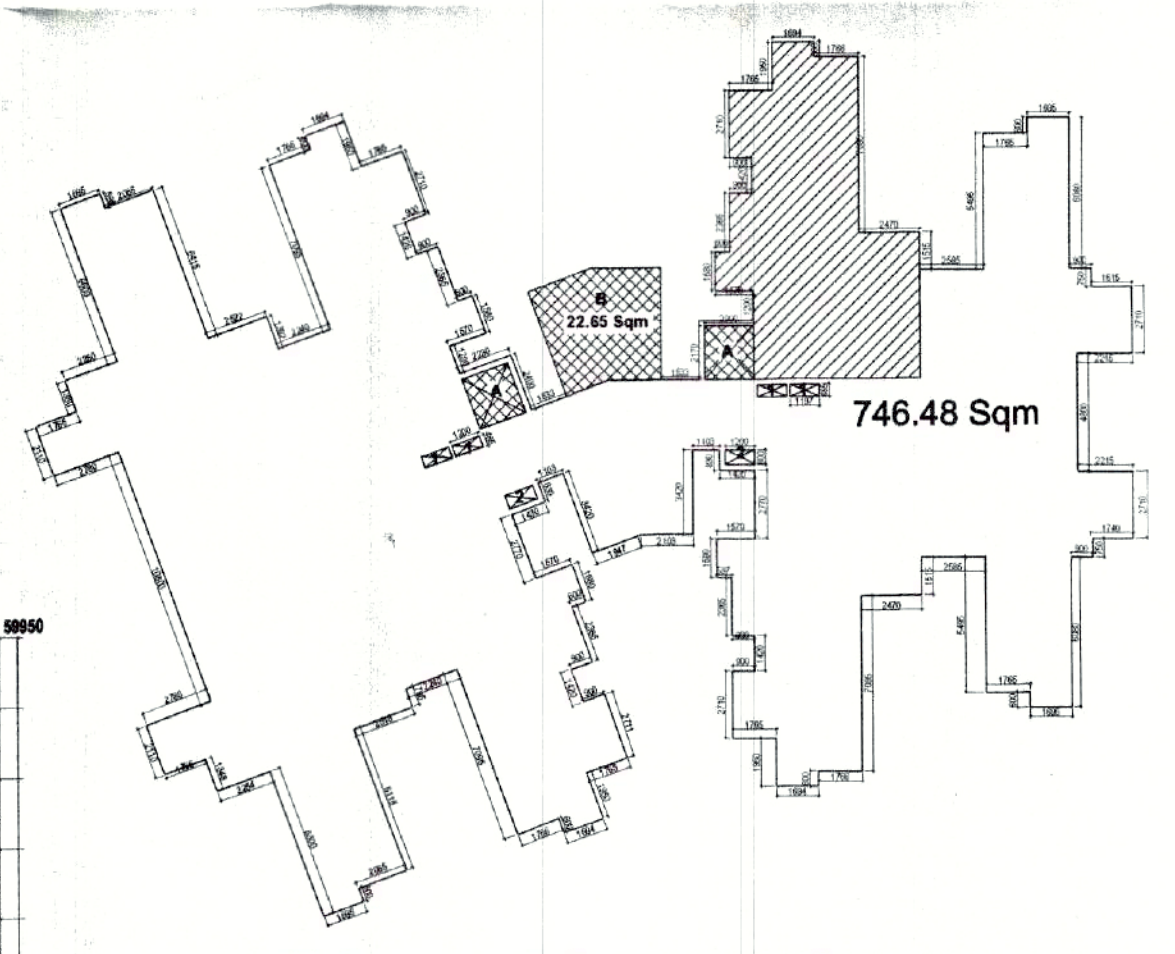
MUMTY TERRACE PLAN



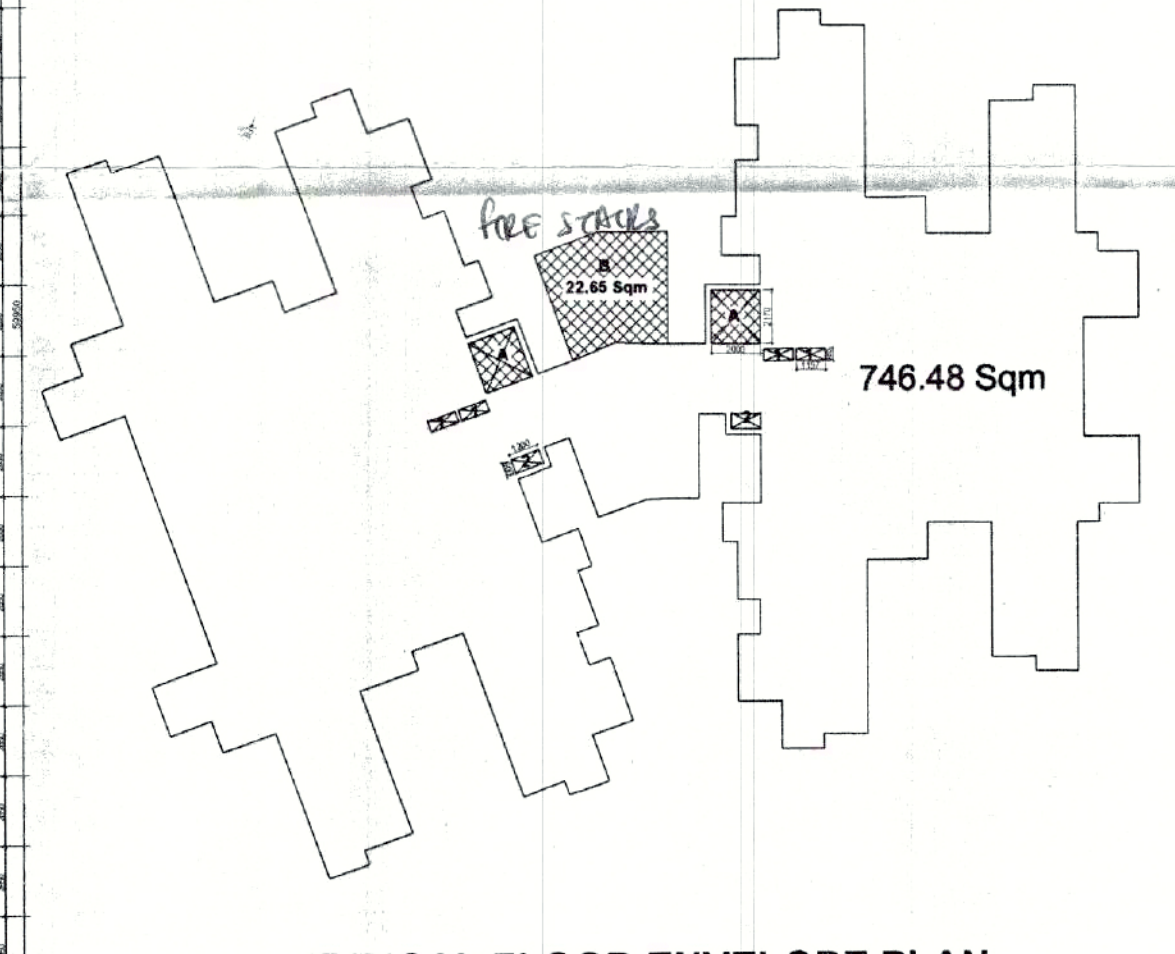
TYPICAL DETAIL OF RAIN WATER PIT



TYPICAL DETAIL OF RAIN WATER PIT



GROUND FLOOR ENVELOPE PLAN



TYPICAL FLOOR ENVELOPE PLAN

AREA CHART (2BHK TOWER)						
FLOORS	ENVELOPE AREA	CUTOUT AREA	COVD. AREA	SERVICES	STILT	F.A.R.
GROUND FLOOR	746.48 Sqm	3.74 Sqm	742.74 Sqm.	22.65 Sqm	73.34 Sqm	646.78 Sqm
1st FLOOR	746.48 Sqm	3.74 Sqm	742.74 Sqm.	31.33 Sqm	---	711.41 Sqm
2nd FLOOR	746.48 Sqm	3.74 Sqm	742.74 Sqm.	31.33 Sqm	---	711.41 Sqm
3rd FLOOR	746.48 Sqm	3.74 Sqm	742.74 Sqm.	31.33 Sqm	---	711.41 Sqm
4th FLOOR	746.48 Sqm	3.74 Sqm	742.74 Sqm.	31.33 Sqm	---	711.41 Sqm
5th FLOOR	746.48 Sqm	3.74 Sqm	742.74 Sqm.	31.33 Sqm	---	711.41 Sqm
6th FLOOR	746.48 Sqm	3.74 Sqm	742.74 Sqm.	31.33 Sqm	---	711.41 Sqm
7th FLOOR	746.48 Sqm	3.74 Sqm	742.74 Sqm.	31.33 Sqm	---	711.41 Sqm
8th FLOOR	746.48 Sqm	3.74 Sqm	742.74 Sqm.	31.33 Sqm	---	711.41 Sqm
9th FLOOR	746.48 Sqm	3.74 Sqm	742.74 Sqm.	31.33 Sqm	---	711.41 Sqm
10th FLOOR	746.48 Sqm	3.74 Sqm	742.74 Sqm.	31.33 Sqm	---	711.41 Sqm
11th FLOOR	746.48 Sqm	3.74 Sqm	742.74 Sqm.	31.33 Sqm	---	711.41 Sqm
12th FLOOR	746.48 Sqm	3.74 Sqm	742.74 Sqm.	31.33 Sqm	---	711.41 Sqm
13th FLOOR	746.48 Sqm	3.74 Sqm	742.74 Sqm.	31.33 Sqm	---	711.41 Sqm
14th FLOOR	746.48 Sqm	3.74 Sqm	742.74 Sqm.	31.33 Sqm	---	711.41 Sqm
15th FLOOR	746.48 Sqm	3.74 Sqm	742.74 Sqm.	31.33 Sqm	---	711.41 Sqm
16th FLOOR	746.48 Sqm	3.74 Sqm	742.74 Sqm.	31.33 Sqm	---	711.41 Sqm
17th FLOOR	746.48 Sqm	3.74 Sqm	742.74 Sqm.	31.33 Sqm	---	711.41 Sqm
18th FLOOR	746.48 Sqm	3.74 Sqm	742.74 Sqm.	31.33 Sqm	---	711.41 Sqm
19th FLOOR	746.48 Sqm	3.74 Sqm	742.74 Sqm.	31.33 Sqm	---	711.41 Sqm
20th FLOOR	746.48 Sqm	3.74 Sqm	742.74 Sqm.	31.33 Sqm	---	711.41 Sqm
MUMTY	40.34 Sqm	---	40.34 Sqm	40.34 Sqm	---	---
TOTAL	15716.42 Sqm	78.54 Sqm	15637.88 Sqm.	689.59 Sqm	73.34 Sqm	14874.96 Sqm
2BHK X 2	31432.84 Sqm	157.08 Sqm	31275.76 Sqm.	1379.18 Sqm	146.68 Sqm	29749.92 Sqm



2 BHK OUT SIDE ELEVATION-A

TYPICAL SECTION THRO' STAIRCASE

TYPICAL SECTION THRO' TOWER, KITCHEN & BALCONY

REMARKS

AREA CHART CUTOUT

- 1. 1.26 X 1.387 = 1.74 Sqm
- 2. 1.26 X .8 = 1.0 X 2 = 2.0 Sqm
- 3. 1.26 X 1.185 = 1.49 Sqm
- 4. .8 X .6 = .48 X 2 = .96 Sqm
- 5. .23 X .485 = .11 X 8 = .8 Sqm

TOTAL = 1.74 + 2.0 + 1.49 + .96 = 6.99 Sqm

SEVICES

A. 2.0 X 2.17 = 4.34 X 2 = 8.68 Sqm

B. 22.65 Sqm

TOTAL = 8.68 + 22.65 = 31.33 Sqm

NO.OF D.U

20 X 6 = 120

1 X 5 = 5

TOTAL = 125

SQ = 125 X 1.5 = 187.5 PER TOWER

GROUND COVERAGE = 890.74 X 5 = 4453.7 Sqm

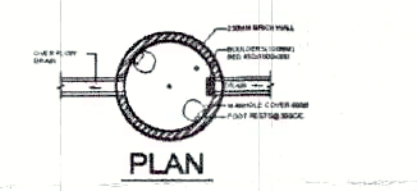
FLOORS	ENVELOPE AREA	CUTOUT AREA	COVD. AREA	SERVICES	STILT	F.A.R.
GROUND FLOOR	890.74 Sqm.	6.99 Sqm.	883.75 Sqm.	22.65 Sqm	118.92 Sqm	742.19 Sqm
1st FLOOR	890.74 Sqm.	6.99 Sqm.	883.75 Sqm.	31.33 Sqm	---	852.42 Sqm
2nd FLOOR	890.74 Sqm.	6.99 Sqm.	883.75 Sqm.	31.33 Sqm	---	852.42 Sqm
3rd FLOOR	890.74 Sqm.	6.99 Sqm.	883.75 Sqm.	31.33 Sqm	---	852.42 Sqm
4th FLOOR	890.74 Sqm.	6.99 Sqm.	883.75 Sqm.	31.33 Sqm	---	852.42 Sqm
5th FLOOR	890.74 Sqm.	6.99 Sqm.	883.75 Sqm.	31.33 Sqm	---	852.42 Sqm
6th FLOOR	890.74 Sqm.	6.99 Sqm.	883.75 Sqm.	31.33 Sqm	---	852.42 Sqm
7th FLOOR	890.74 Sqm.	6.99 Sqm.	883.75 Sqm.	31.33 Sqm	---	852.42 Sqm
8th FLOOR	890.74 Sqm.	6.99 Sqm.	883.75 Sqm.	31.33 Sqm	---	852.42 Sqm
9th FLOOR	890.74 Sqm.	6.99 Sqm.	883.75 Sqm.	31.33 Sqm	---	852.42 Sqm
10th FLOOR	890.74 Sqm.	6.99 Sqm.	883.75 Sqm.	31.33 Sqm	---	852.42 Sqm
11th FLOOR	890.74 Sqm.	6.99 Sqm.	883.75 Sqm.	31.33 Sqm	---	852.42 Sqm
12th FLOOR	890.74 Sqm.	6.99 Sqm.	883.75 Sqm.	31.33 Sqm	---	852.42 Sqm
13th FLOOR	890.74 Sqm.	6.99 Sqm.	883.75 Sqm.	31.33 Sqm	---	852.42 Sqm
14th FLOOR	890.74 Sqm.	6.99 Sqm.	883.75 Sqm.	31.33 Sqm	---	852.42 Sqm
15th FLOOR	890.74 Sqm.	6.99 Sqm.	883.75 Sqm.	31.33 Sqm	---	852.42 Sqm
16th FLOOR	890.74 Sqm.	6.99 Sqm.	883.75 Sqm.	31.33 Sqm	---	852.42 Sqm
17th FLOOR	890.74 Sqm.	6.99 Sqm.	883.75 Sqm.	31.33 Sqm	---	852.42 Sqm
18th FLOOR	890.74 Sqm.	6.99 Sqm.	883.75 Sqm.	31.33 Sqm	---	852.42 Sqm
19th FLOOR	890.74 Sqm.	6.99 Sqm.	883.75 Sqm.	31.33 Sqm	---	852.42 Sqm
20th FLOOR	890.74 Sqm.	6.99 Sqm.	883.75 Sqm.	31.33 Sqm	---	852.42 Sqm
MUMTY	40.34 Sqm.	---	40.34 Sqm.	40.34 Sqm.	---	---
TOTAL	18745.88 Sqm	146.79 Sqm	18599.09 Sqm.	689.59 Sqm	118.92 Sqm	17790.59 Sqm
3BHK X 5	93729.4 Sqm	733.95 Sqm	92995.45 Sqm.	3447.95 Sqm	594.6 Sqm	88952.95 Sqm



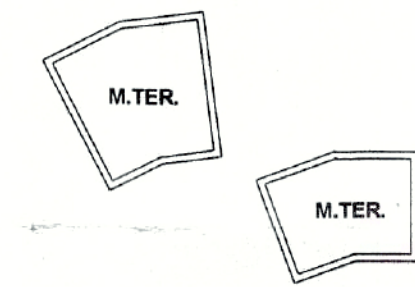
3BHK TOWER TYPICAL FLOOR



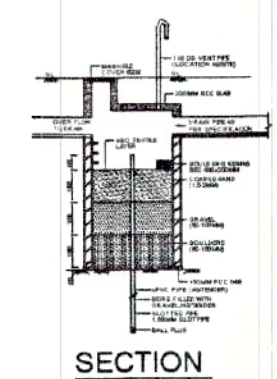
GROUND FLOOR PLAN



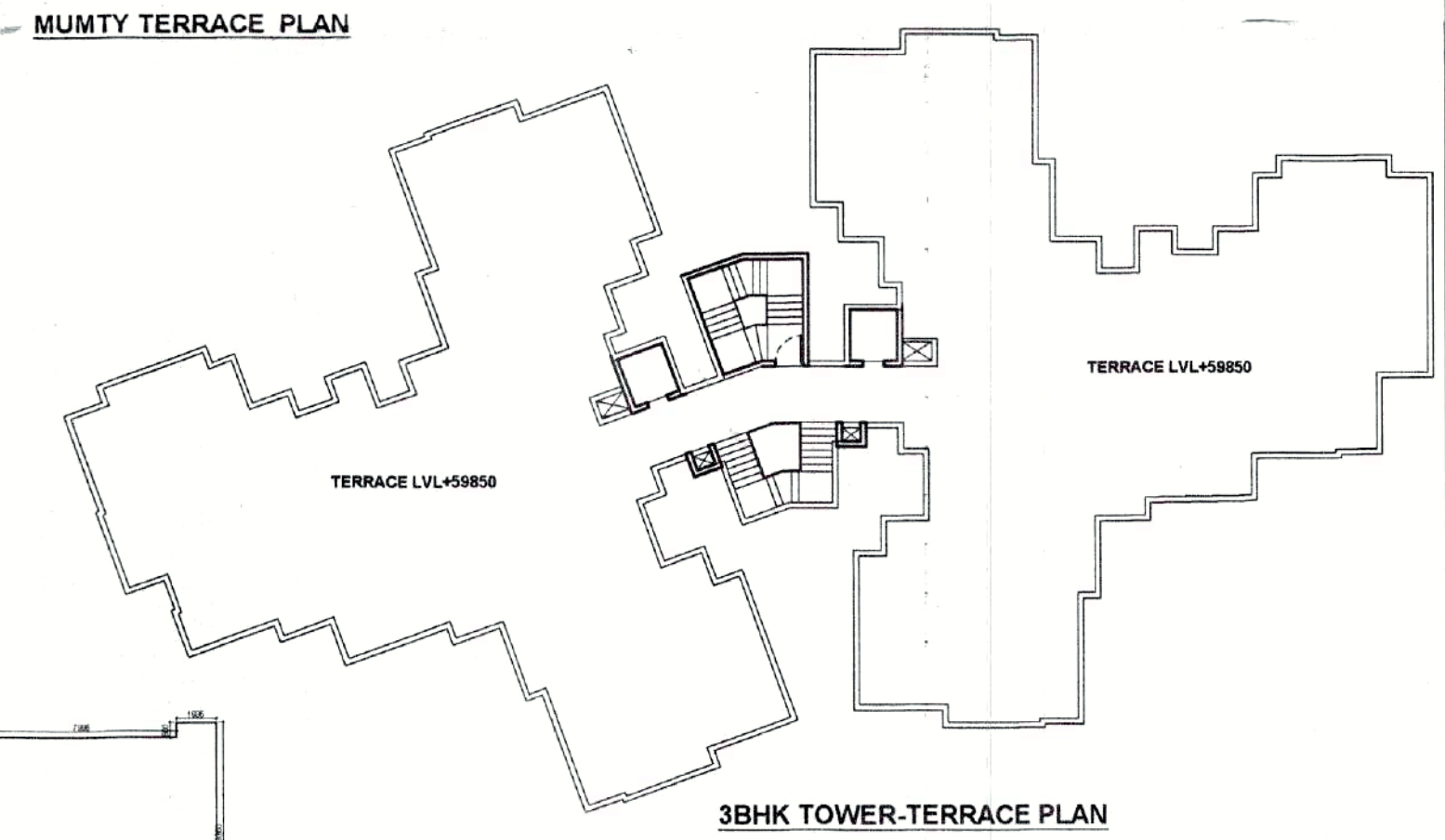
TYPICAL DETAIL OF RAIN WATER PIT



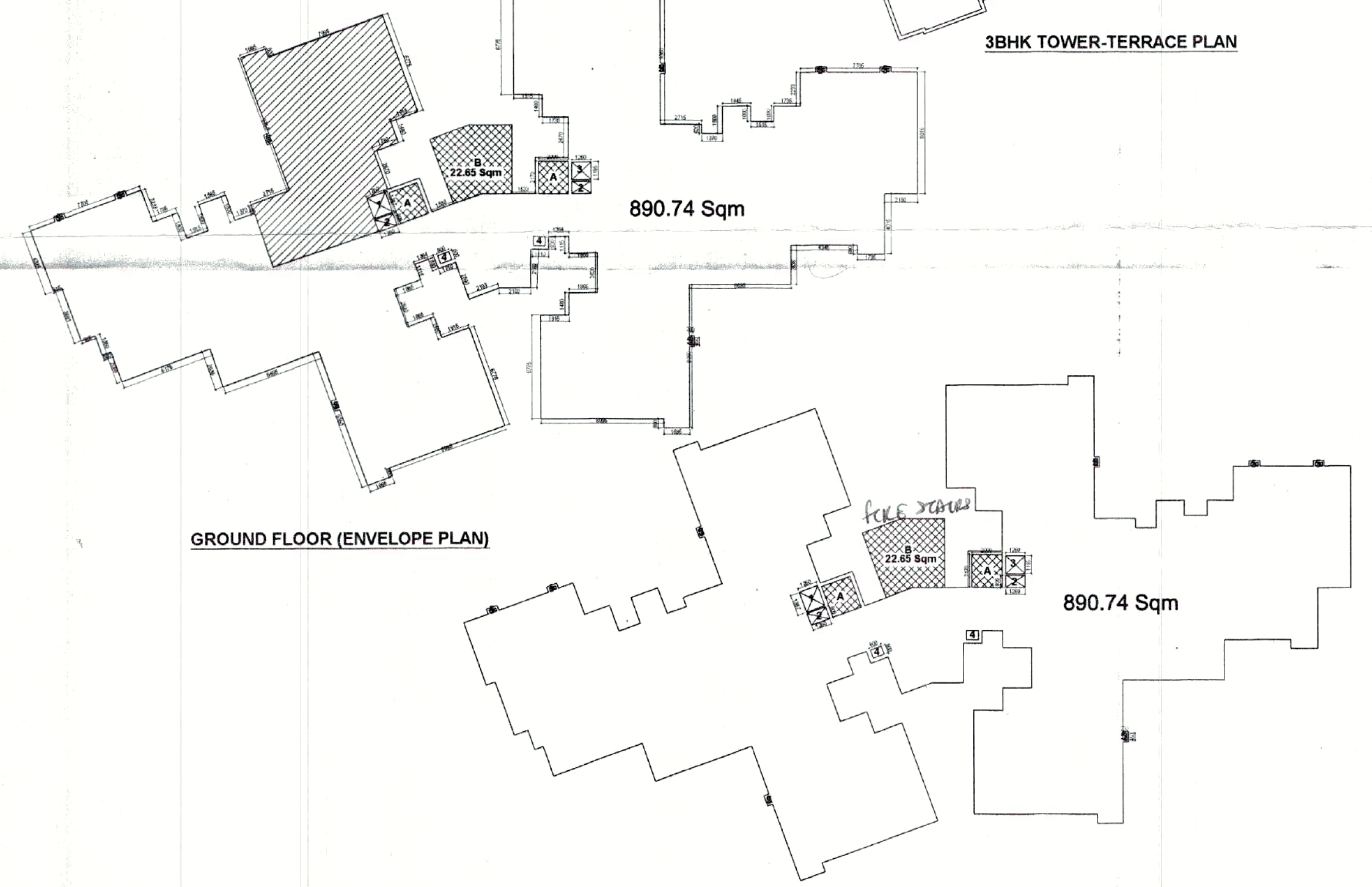
MUMTY TERRACE PLAN



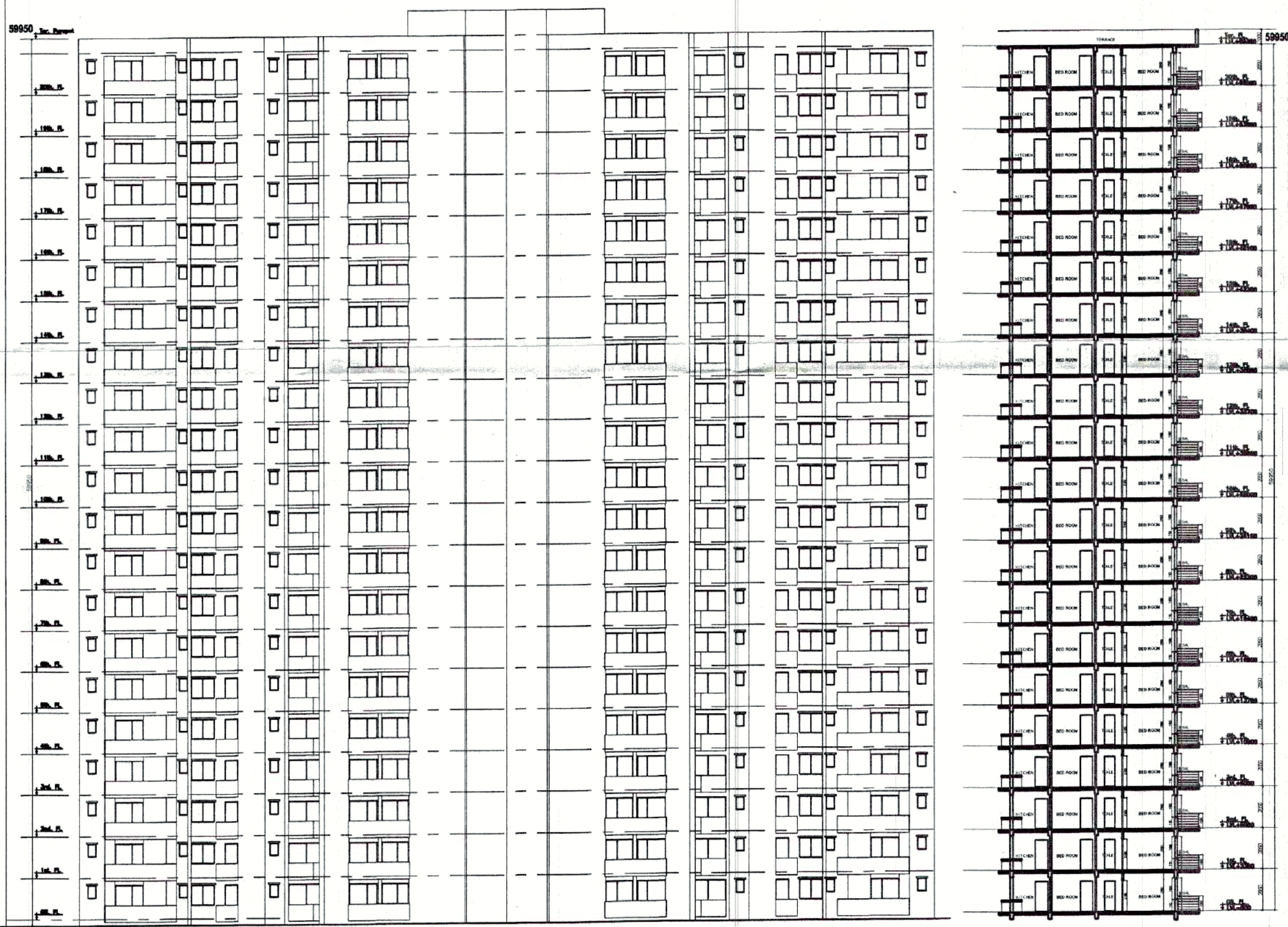
TYPICAL DETAIL OF RAIN WATER PIT



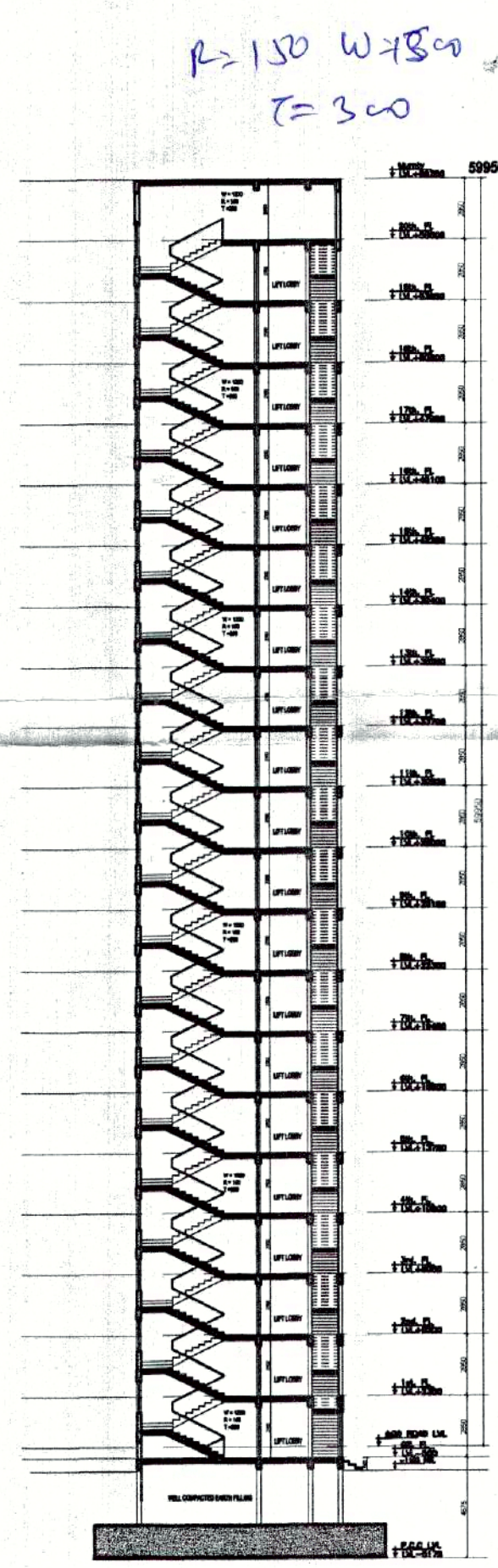
3BHK TOWER-TERRACE PLAN



GROUND FLOOR (ENVELOPE PLAN)



3 BHK OUTSIDE ELEVATION



TYPICAL SECTION THRO' STAIRCASE

TYPICAL FLOOR (ENVELOPE PLAN)

PROJECT
Proposed Group Housing Building on Plot No.- 2, SEC - 137 noida FOR

TITLE
SUBMISSION DRAWING (3BHK TOWER)

SCALE 1:100 & 1:200 **DATE** 04-02-10

JOB NO. 1064 **DRG.NO.** 02

ARCHITECTS SIGN **OWNERS SIGN**

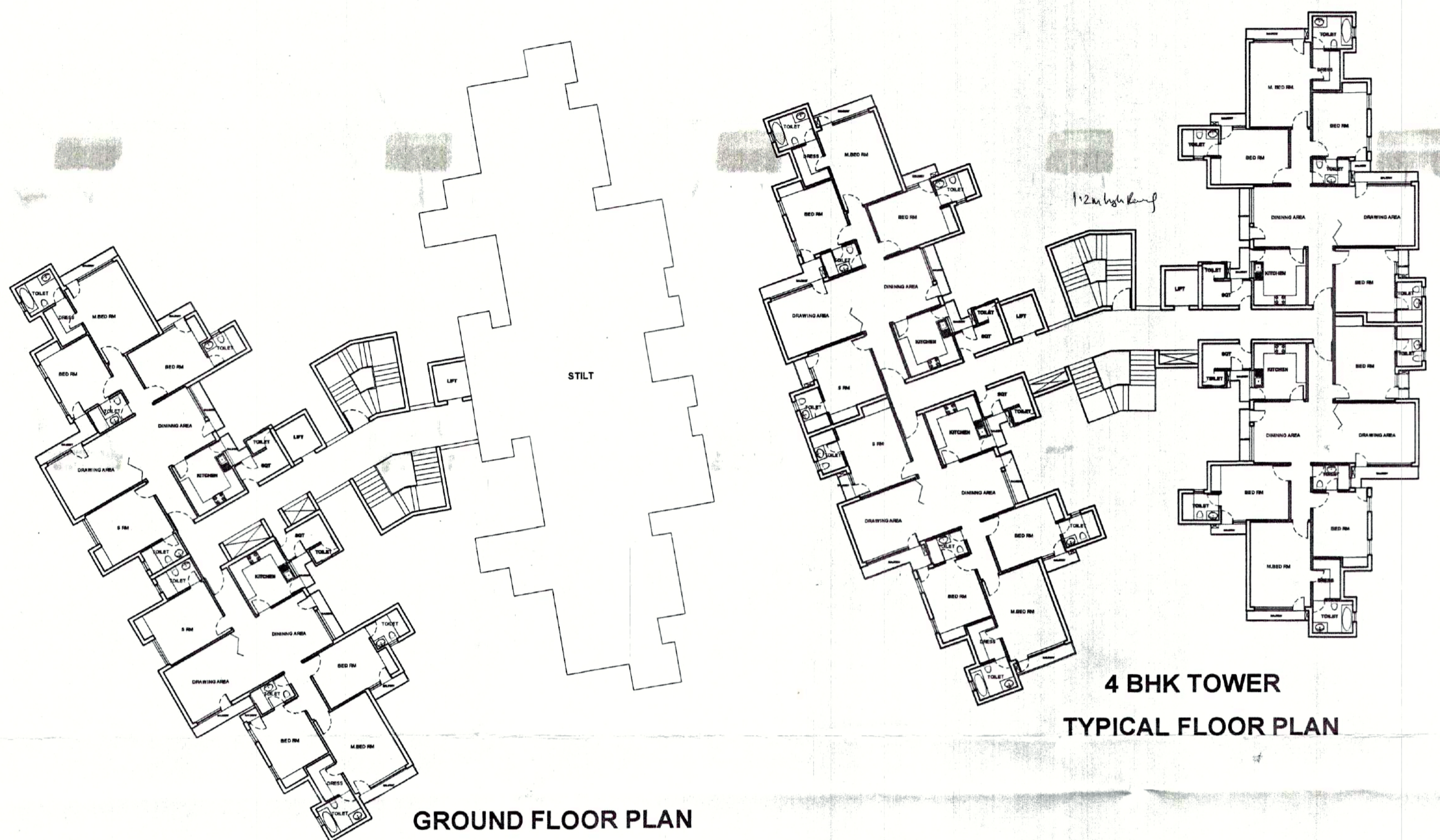
Handwritten signature
R.N. GOEL
CA 7612361

Handwritten signature
LOGIX CONSTRUCTION PVT. LTD.
Director

CONSULTANT
R.N.Gupta & Associates
Consulting Engineers, Architects & Valuers
E-1, Sector-55, Noida
Phones - (+120) 2582224, 2582773
Fax - (+120) 4321556
email - info@rngcorp.com

REMARKS
 Building Plan up to 30m height is approved
 1. 2.62 X .97 = 2.54 Sqm
 2. 1.735 X .97 = 1.68 Sqm
 TOTAL = 2.54 + 1.68 = 4.22 Sqm
 3. 2.35 X .6 = 1.41 X 2 = 2.82 Sqm
 4. .23 X 1.015 = .23 X 4 = 0.92 Sqm
 5. .6 X .23 = .138 X 8 = 1.104 Sqm
 6. .23 X .67 = .154 X 4 = 0.616 Sqm
 7. .23 X .45 = .103 X 4 = 0.412 Sqm
 TOTAL = 2.82 + .92 + 1.104 + .616 + .412 = 5.872 Sqm

OUT SIDE ELEVATION-B



AREA CHART (2BHK TOWER)

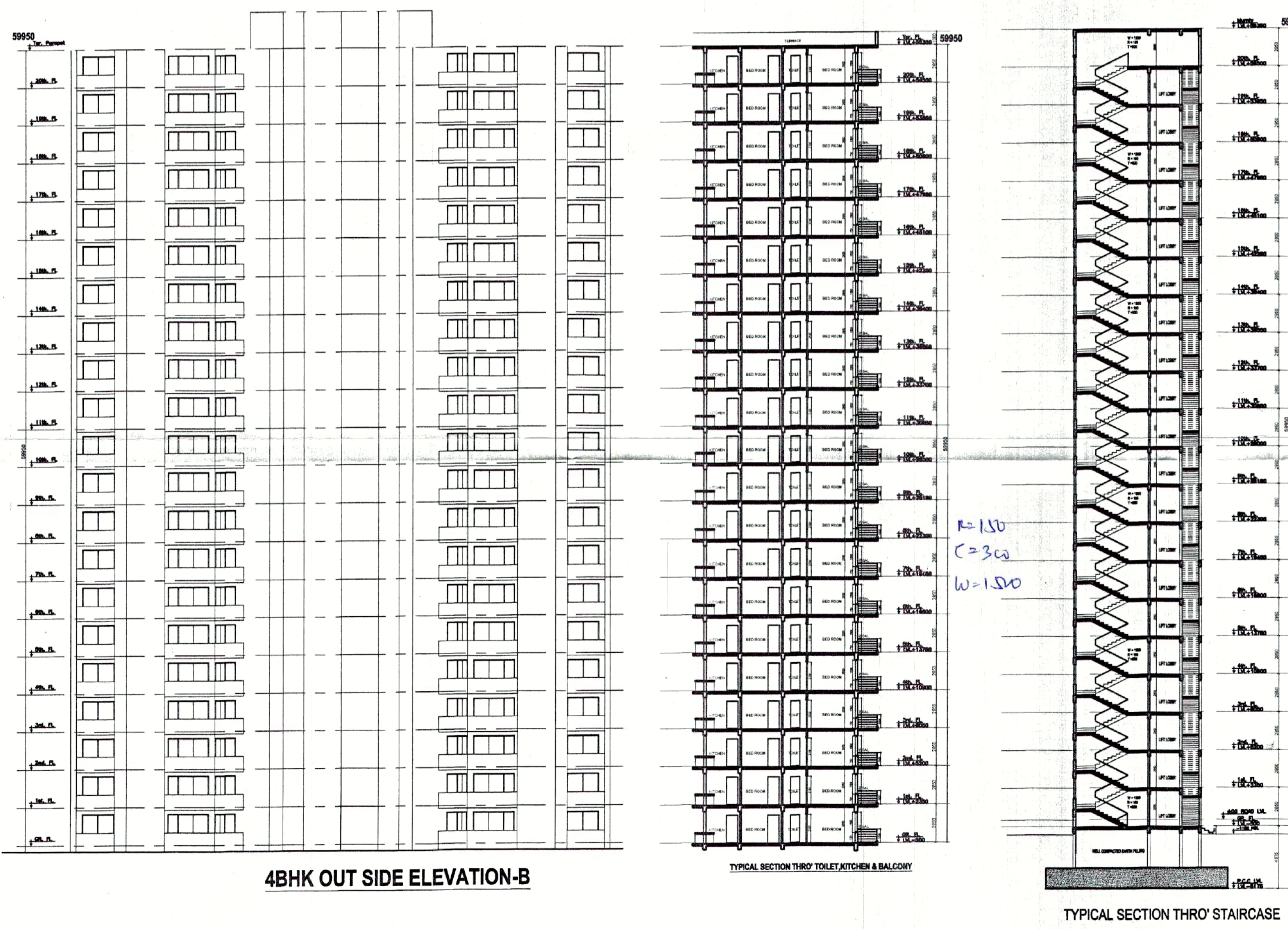
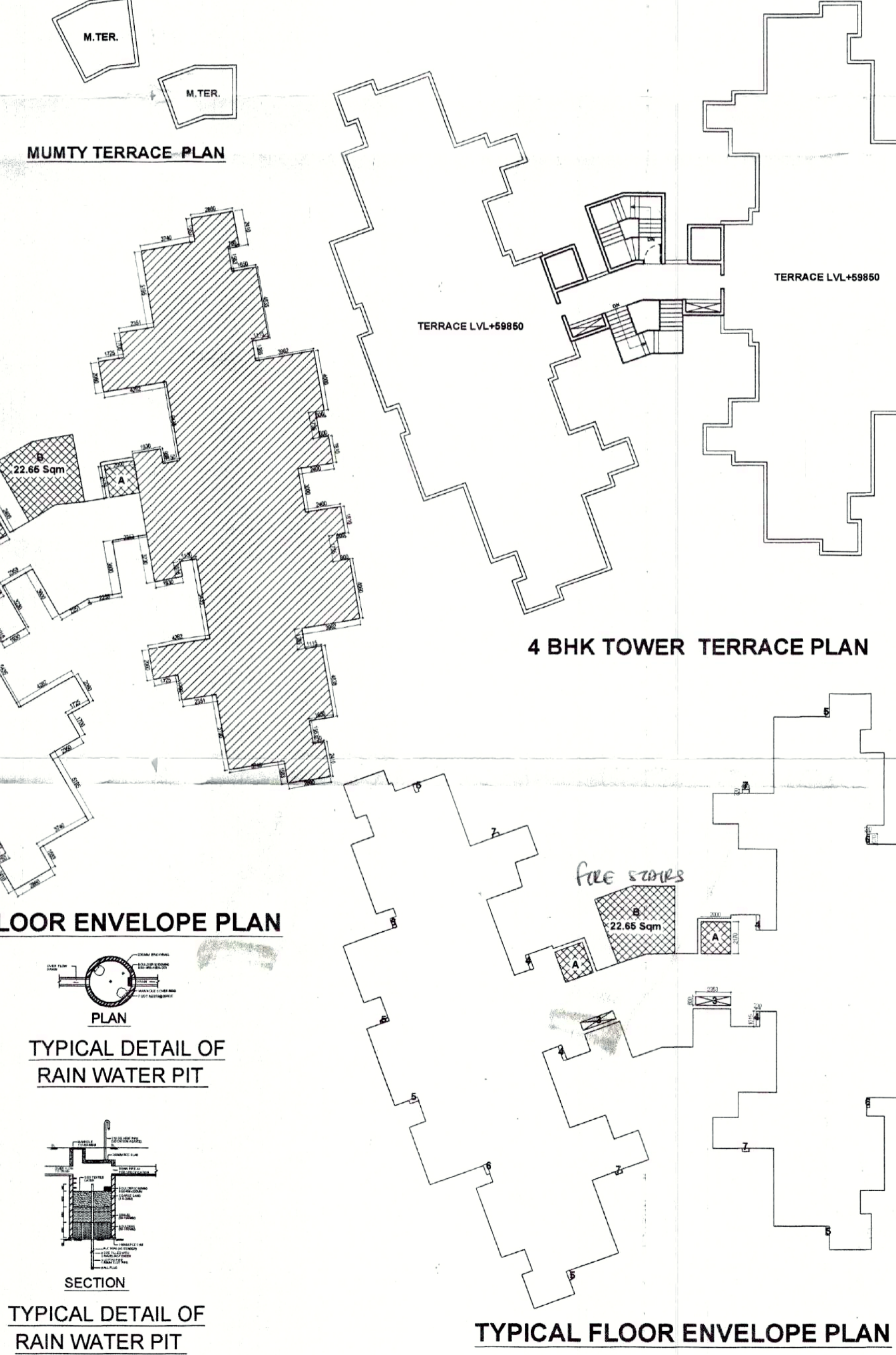
FLOORS	ENVELOPE AREA	CUTOUT AREA	COVD. AREA	SERVICES	STILT	F.A.R.
GROUND FLOOR	777.26 Sqm	4.22 Sqm	773.04 Sqm.	22.65 Sqm	304.058 Sqm	444.68 Sqm
1st FLOOR	777.26 Sqm	5.872 Sqm	771.388 Sqm.	31.33 Sqm	---	740.058 Sqm
2nd FLOOR	777.26 Sqm	5.872 Sqm	771.388 Sqm.	31.33 Sqm	---	740.058 Sqm
3rd FLOOR	777.26 Sqm	5.872 Sqm	771.388 Sqm.	31.33 Sqm	---	740.058 Sqm
4th FLOOR	777.26 Sqm	5.872 Sqm	771.388 Sqm.	31.33 Sqm	---	740.058 Sqm
5th FLOOR	777.26 Sqm	5.872 Sqm	771.388 Sqm.	31.33 Sqm	---	740.058 Sqm
6th FLOOR	777.26 Sqm	5.872 Sqm	771.388 Sqm.	31.33 Sqm	---	740.058 Sqm
7th FLOOR	777.26 Sqm	5.872 Sqm	771.388 Sqm.	31.33 Sqm	---	740.058 Sqm
8th FLOOR	777.26 Sqm	5.872 Sqm	771.388 Sqm.	31.33 Sqm	---	740.058 Sqm
9th FLOOR	777.26 Sqm	5.872 Sqm	771.388 Sqm.	31.33 Sqm	---	740.058 Sqm
10th FLOOR	777.26 Sqm	5.872 Sqm	771.388 Sqm.	31.33 Sqm	---	740.058 Sqm
11th FLOOR	777.26 Sqm	5.872 Sqm	771.388 Sqm.	31.33 Sqm	---	740.058 Sqm
12th FLOOR	777.26 Sqm	5.872 Sqm	771.388 Sqm.	31.33 Sqm	---	740.058 Sqm
13th FLOOR	777.26 Sqm	5.872 Sqm	771.388 Sqm.	31.33 Sqm	---	740.058 Sqm
14th FLOOR	777.26 Sqm	5.872 Sqm	771.388 Sqm.	31.33 Sqm	---	740.058 Sqm
15th FLOOR	777.26 Sqm	5.872 Sqm	771.388 Sqm.	31.33 Sqm	---	740.058 Sqm
16th FLOOR	777.26 Sqm	5.872 Sqm	771.388 Sqm.	31.33 Sqm	---	740.058 Sqm
17th FLOOR	777.26 Sqm	5.872 Sqm	771.388 Sqm.	31.33 Sqm	---	740.058 Sqm
18th FLOOR	777.26 Sqm	5.872 Sqm	771.388 Sqm.	31.33 Sqm	---	740.058 Sqm
19th FLOOR	777.26 Sqm	5.872 Sqm	771.388 Sqm.	31.33 Sqm	---	740.058 Sqm
20th FLOOR	777.26 Sqm	5.872 Sqm	771.388 Sqm.	31.33 Sqm	---	740.058 Sqm
MUMTY	40.34 Sqm	---	40.34 Sqm.	40.34 Sqm.	---	---
TOTAL	16362.8 Sqm	121.66 Sqm	16241.14 Sqm.	689.59 Sqm	304.058 Sqm	15245.84 Sqm
4BHK X 2	32725.6 Sqm	243.32 Sqm	32482.28 Sqm.	1379.18 Sqm	608.116 Sqm	30491.68 Sqm

CUTOUT
 1. 2.62 X .97 = 2.54 Sqm
 2. 1.735 X .97 = 1.68 Sqm
 TOTAL = 2.54 + 1.68 = 4.22 Sqm
 3. 2.35 X .6 = 1.41 X 2 = 2.82 Sqm
 4. .23 X 1.015 = .23 X 4 = 0.92 Sqm
 5. .6 X .23 = .138 X 8 = 1.104 Sqm
 6. .23 X .67 = .154 X 4 = 0.616 Sqm
 7. .23 X .45 = .103 X 4 = 0.412 Sqm
 TOTAL = 2.82 + .92 + 1.104 + .616 + .412 = 5.872 Sqm

SEVICES
 A. 2.0 X 2.17 = 4.34 X 2 = 8.68 Sqm
 B. 22.65 Sqm
 TOTAL = 8.68 + 22.65 = 31.33 Sqm

NO. OF D.U
 20 X 4 = 80
 1 X 2 = 2
 TOTAL NO. OF FLAT = 82
 TOTAL NO. OF DU = 82 X 1.5 = 123 X 2 = 246 PER TOWER

GROUND COVERAGE = 777.26 X 2 = 1554.56 Sqm



PROJECT
 Proposed Group Housing Building on Plot No.- 2, SEC - 137 noida FOR

TITLE
 SUBMISSION DRAWING (4BHK TOWER)

SCALE 1:100 & 1:200 DATE 04-02-10
 JOB NO. 1064 DRG.NO. 04

ARCHITECTS SIGN OWNERS SIGN

CONSULTANT
R.N.Gupta & Associates
 Consulting Engineers, Architects & Valuers
 E-1, Sector-55, Noida
 Phones - (+120) 2582224, 2582773
 Fax - (+120) 4321556
 email - info@rngcorp.com