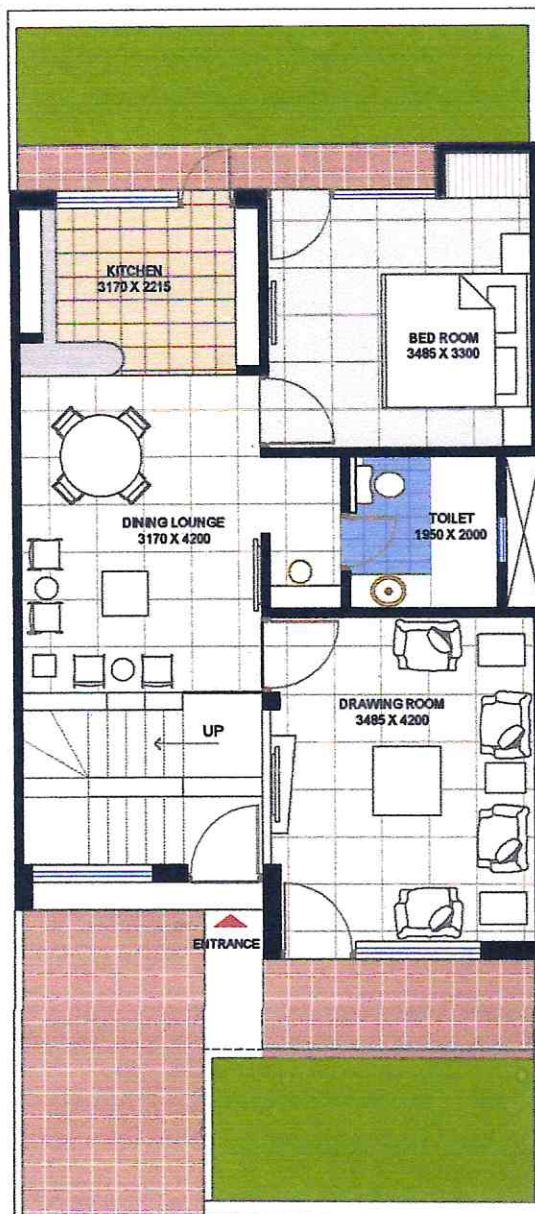


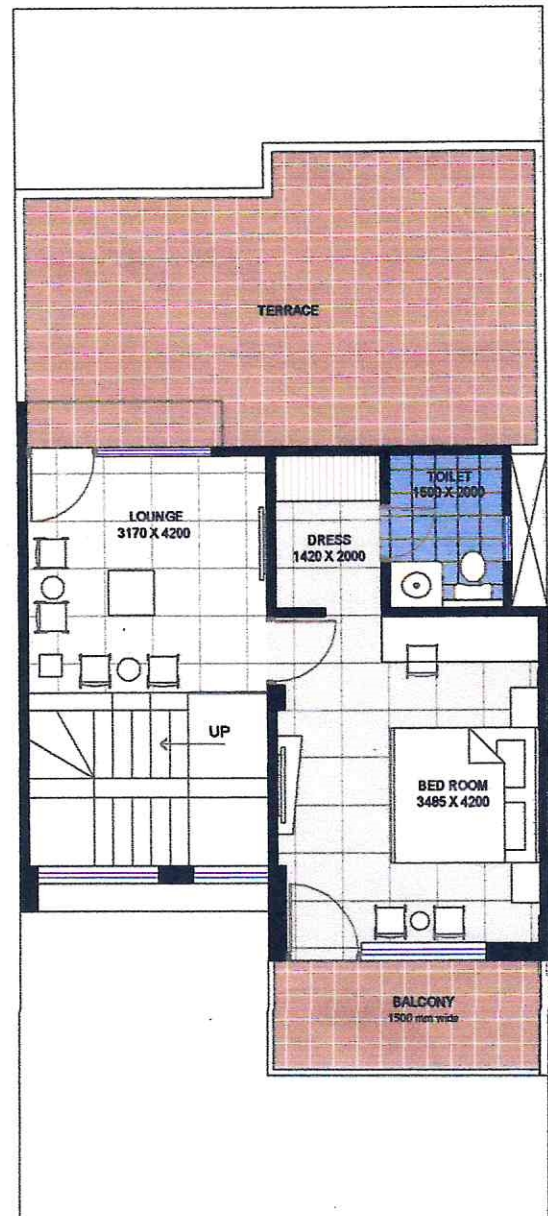
2 BED ROOM + STUDY

- * TOTAL BUILT UP AREA = 91 SQ.M = 980 SQ.FT.
- * SHARE OF AREA IN CORRIDOR, MUMTY, STAIRCASE = 8.4 SQ.M = 90 SQ.FT.
- * TOTAL BUILT UP = 99.4 SQ.M = 1070 SQ.FT .

* approximate area. The actual cost will be decided on the final total built up area



GROUND FLOOR
VILLA



FIRST FLOOR
VILLA

PLOT AREA = 112 SQ.M = 1205 SQ.FT.
 * GROUND COVERAGE = 67 SQ.M = 721 SQ.FT.
 * TOTAL BUILT UP AREA = 124.6 SQ.M = 1341 SQ.FT.
 * approximate area. The actual cost will be decided
 on the final built up area

9



2 BED ROOM, TYPE - A

- * TOTAL BUILT UP AREA = 74 SQ.M 796.3 SQ.FT.
- * SHARE OF AREA IN CORRIDOR, MUMTY, STAIRCASE = 7.15 SQ.M = 77 SQ.FT.
- * TOTAL BUILT UP = 81.15 SQ.M = 873.8 SQ.FT .

* approximate area. The actual cost will be decided on the final total built up area