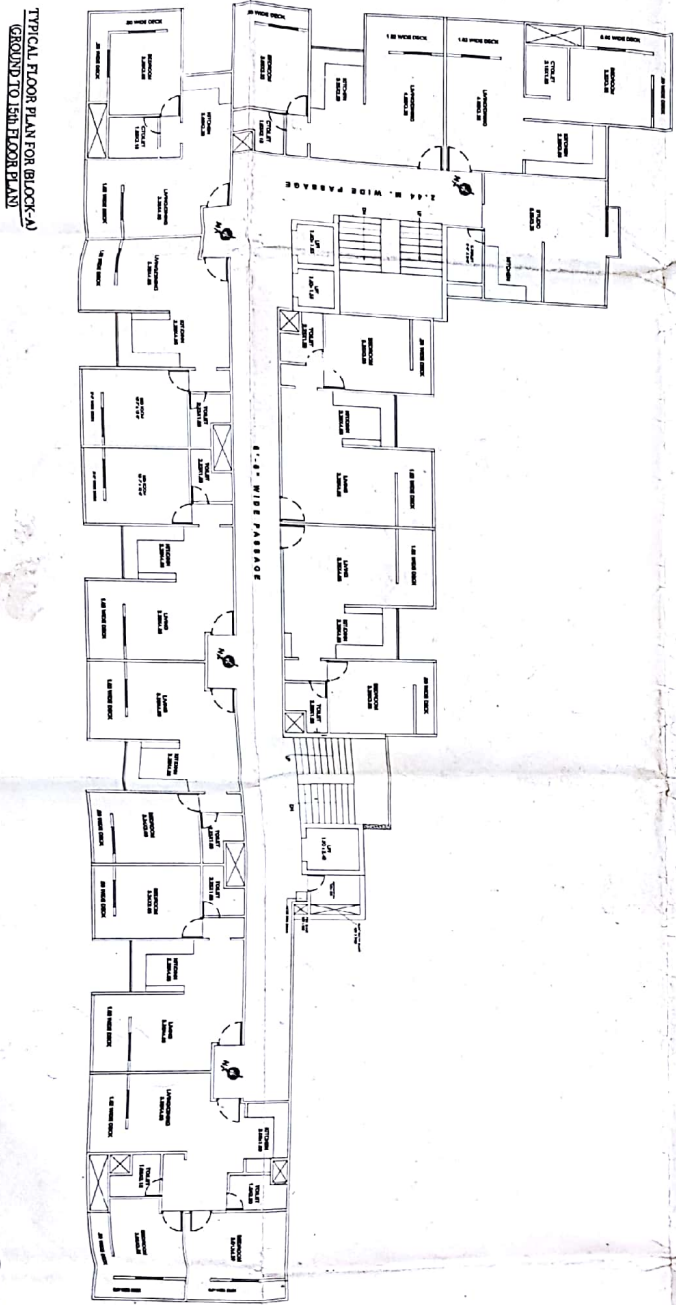


1. 1st floor plan for Block-A
 2. 1st floor plan for Block-A
 3. 1st floor plan for Block-A
 4. 1st floor plan for Block-A
 5. 1st floor plan for Block-A

1. 1st floor plan for Block-A
 2. 1st floor plan for Block-A
 3. 1st floor plan for Block-A
 4. 1st floor plan for Block-A
 5. 1st floor plan for Block-A

1. 1st floor plan for Block-A
 2. 1st floor plan for Block-A
 3. 1st floor plan for Block-A
 4. 1st floor plan for Block-A
 5. 1st floor plan for Block-A

1. 1st floor plan for Block-A
 2. 1st floor plan for Block-A
 3. 1st floor plan for Block-A
 4. 1st floor plan for Block-A
 5. 1st floor plan for Block-A



SHEET NO. — 4
 BLOCK - A

SPECIFICATIONS
 1. FIRST CLASS BRICK WORK IN 1:4 C/MORTAR
 2. R.C.C. WORK IN 1:2:4 CEMENT MIX
 3. FOUNDATION CEMENT CONC. IN 1:4:8 MIX
 4. PLASTERING IN 1:4 CEMENT/MORTAR
 5. DOOR WINDOW IN WOODEN WORK
DOOR WINDOW SCHEDULE
 1. DOOR - 1.07x2.10
 D1 = 0.59x2.10
 D2 = 0.76x2.10
 2. WINDOW W1 - 1.21x1.2
 3. VENTI V - 0.65x0.65

LEGENDS
 PROPOSED WORK SHOWN THUS

SCALE
 PROPOSED PLAN OF THE RESIDENTIAL APARTMENTS ON A
 LAND BEHIND KEMTA NO. 544 PUSKAS NO. EN/D SMALD
 AT MAJUDA SUNBARIBANGAR TEL. & DIST. MATURKA
 TEL. & DIST. MATURKA.

OWNERS :- KANHA INFRA TECH LLP.
 1001, JAGANNATHPUR (MATHURA)
 PARTNER:- AVIND AGRAWAL, S.D. MURDIPAL AGRAWAL
 P.O 1001, JAGANNATHPUR (MATHURA)

ARCHITECTS:
KONARK ARCHITECTS ENGINEERS & BUILDERS
 ARCHITECTS ENGINEERS & BUILDERS
 C-45 ANAND VIHAR, MAHODI ROAD/141/08 (O)
 PH. 9412278919 (M), 0565 850091/501708 (O)

N
 OWNERS SIGN :-