

3297/0

1500 WIDE CORRIDOR

3297/0

3297/0

**UPAVP**  
 ARCHITECTURAL AND PLANNING  
 NEELERI COLONY, NEERA  
 LUCKNOW - 226016  
 Email: upavp@sanidhi.in  
 880 480112000

DRG. NO.  
 APP/DUN-3/10-F-01-A-CL-01

**REVISION NOTE:**  
 REVISION - 1:  
 THIS FLOOR DESIGN HAS BEEN REVISED IN THE BASIS OF  
 THE PLAT DESIGN HAS BEEN REVISED IN THE BASIS OF  
 BETWEEN S.E.I.N.O.A.C.A.P. REVISED IN THE BASIS OF  
 HOUSING COMMISSION DESIGN (UNIT - 1) 11/11/2014

REVISION - 2:  
 THIS FLOOR DESIGN HAS BEEN REVISED AGAIN ON THE BASIS  
 OF THE PLAT DESIGN HAS BEEN REVISED IN THE BASIS OF  
 BETWEEN S.E.I.N.O.A.C.A.P. REVISED IN THE BASIS OF  
 HOUSING COMMISSION DESIGN (UNIT - 1) 11/11/2014. REVISED  
 LETTER NUMBER ON DRAWING 07/07/2014. REVISED  
 LETTER NUMBER BY CHIEF ARCHITECT PLANNING AND

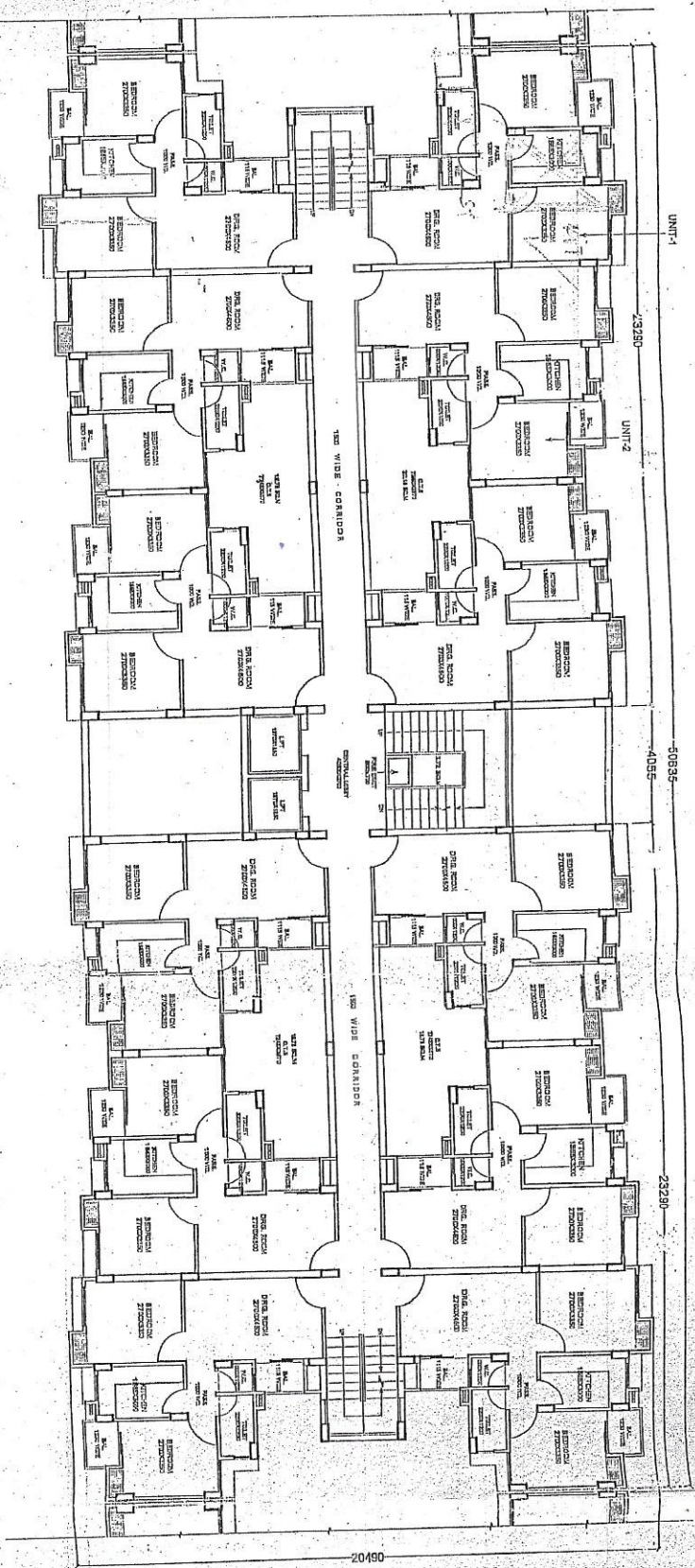
REVISION - 3:  
 THIS FLOOR DESIGN HAS BEEN REVISED ON THE BASIS  
 OF THE PLAT DESIGN HAS BEEN REVISED IN THE BASIS OF  
 BETWEEN S.E.I.N.O.A.C.A.P. REVISED IN THE BASIS OF  
 HOUSING COMMISSION DESIGN (UNIT - 1) 11/11/2014.

**AREA STATEMENT:**  
 UNIT - 1 AREA = 71.76 SQ  
 UNIT - 2 AREA = 71.76 SQ  
 CIRCULATION AREA = 72.2  
 SUPER AREA = 84.05 SQ.

PROJECT: FLAT DESIGN (F44)  
 DRG. TITLE: TYPICAL CLUSTER PLD  
 (REVISION - 3)

DESIGNED BY: VIKAS SINGH  
 DATED: 1

VIKAS SINGH 1. ARCH. CHIEF	
ARVIND DEO ARYA ASST. ARCH. PLANNER	
HEMA AGARWAL ARCHITECT PLANNER	
CHIEF ARCHITECT PLANNER	



DRG. NO. APD/JN-3/TD-F-64/CP/08/14/3

ARCHITECTURE AND PLANNING SECTION  
 NERJERI COMPLEX, INDRA NAGAR  
 LUCKNOW-226016  
 Email: nptc@santhametha

**NOTE**

1. This drawing is being revised on the basis of requisition received from S.E. Vindavan circular letter no. 1250/1-1/04 dated 28.06.2014, C.D.-3's letter no. 751/G-6/25 dated 23.06.2014, on the basis of meeting minutes received from Vindavan's letter no. 1250/1-1/03 dated 28.06.2014. The following changes have been made:

- a) The wall dividing the dwelling units have proposed to be 230 mm. Instead of 115 mm.
- b) Expansion joints have been proposed at wall of blocks.
- c) The walls adjacent to the expansion joint have been proposed 115 mm thick. The end wall be of 230 mm. whenever expansion joints be executed.

**AREA STATEMENT:**

UNIT -1 AREA = 63.99 SQ.M  
 UNIT -2 AREA = 63.99 SQ.M  
 CIRCULATION AREA = 116.73 SQ.M  
 SUPER AREA OF UNIT -1 = 63.63 SQ.M  
 SUPER AREA OF UNIT -2 = 63.63 SQ.M

PROJECT: FLAT DESIGN (F-64)

DRG. TITLE: REVISED TYPICAL CLUSTER PLAN

DEALT BY: VIKAS SINGH

DATE: 08-07-2014

VIKAS SINGH  
 3/2906 CIVIL

ARVIND DEO ARYA  
 451/ ARCH PLANNER

HEMA AGARWAL  
 ARCHITECT 2/400/3

G.S.GOVIL