

BLOCK-A

BLOCK A
GROUND FLOOR PLAN

split
VERANDAH
28.54x3.50

52.28

CHHAJJA

3.50

26.69

62.54

18.71

18.96

VERANDAH
6.78x29.68

3.55x29.68

29.68

6.82

3.03

3.04

R.S.

R.S.

R.S.

R.S.

R.S.

R.S.

R.S.

R.S.

R.S.

R.S.

R.S.

R.S.

R.S.

R.S.

R.S.

R.S.

R.S.

R.S.

R.S.

R.S.

R.S.

R.S.

1.80

4.48

3.65

2.61

2.61

2.60

5.03

6.12

6.21

7.31

1.51

3.03

3.04

4.87

4.87

3.24

1.05

2.85

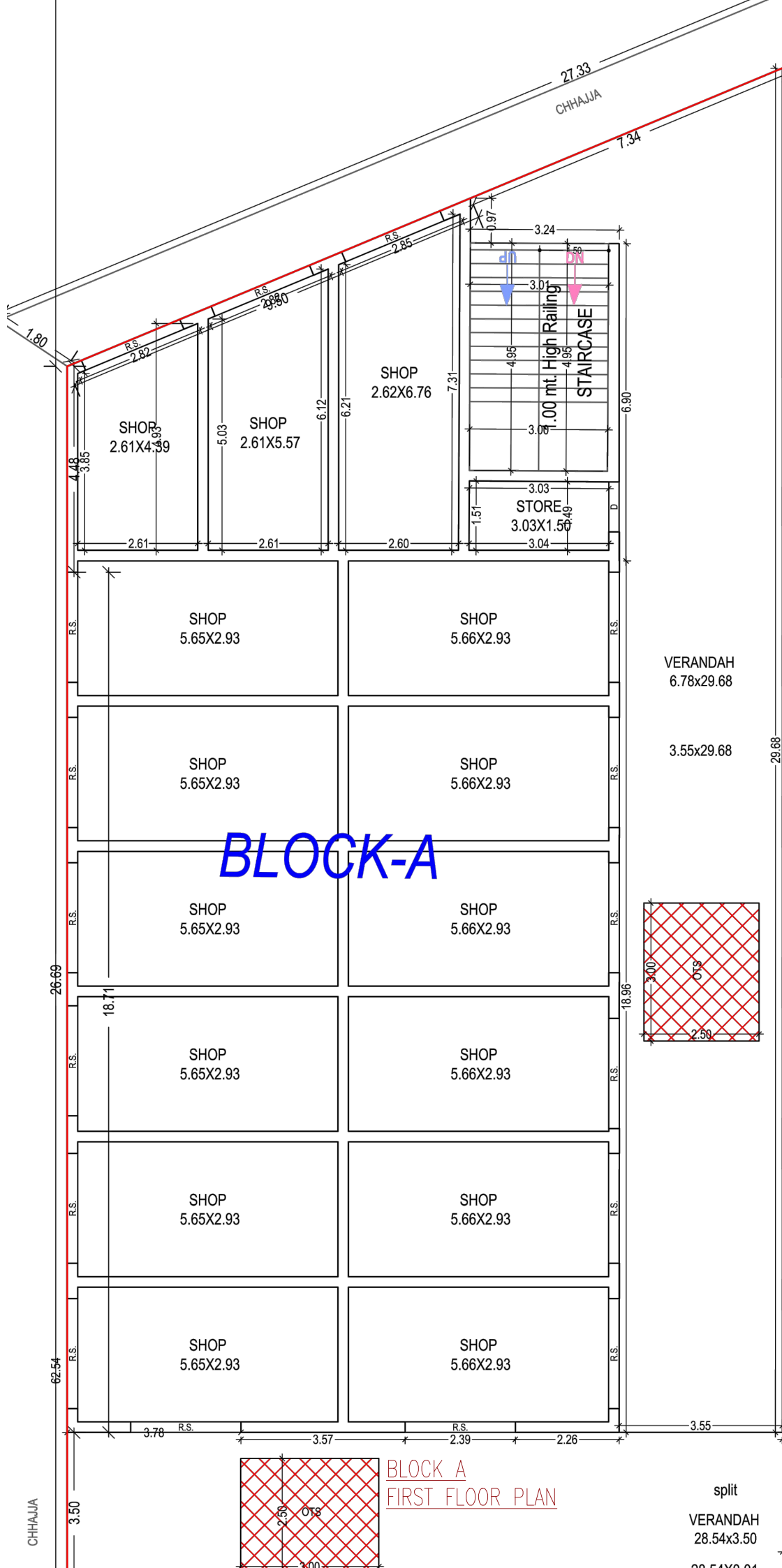
2.82

2.88

2.80

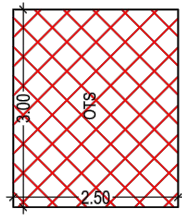
7.34

CHHAJJA



BLOCK-A

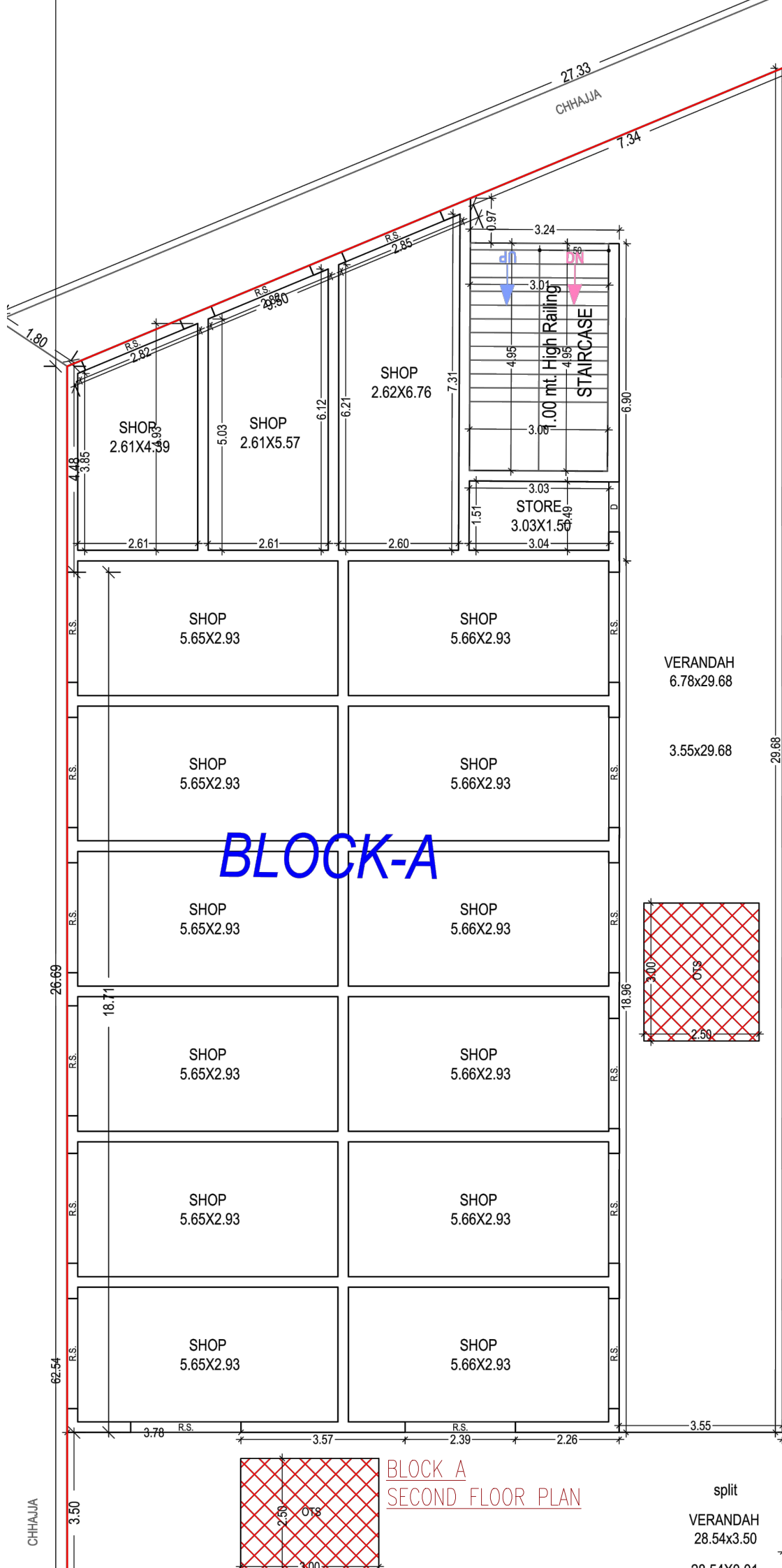
**BLOCK A
FIRST FLOOR PLAN**



split

VERANDAH
28.54x3.50

28.54x0.01



BLOCK-A

**BLOCK A
SECOND FLOOR PLAN**

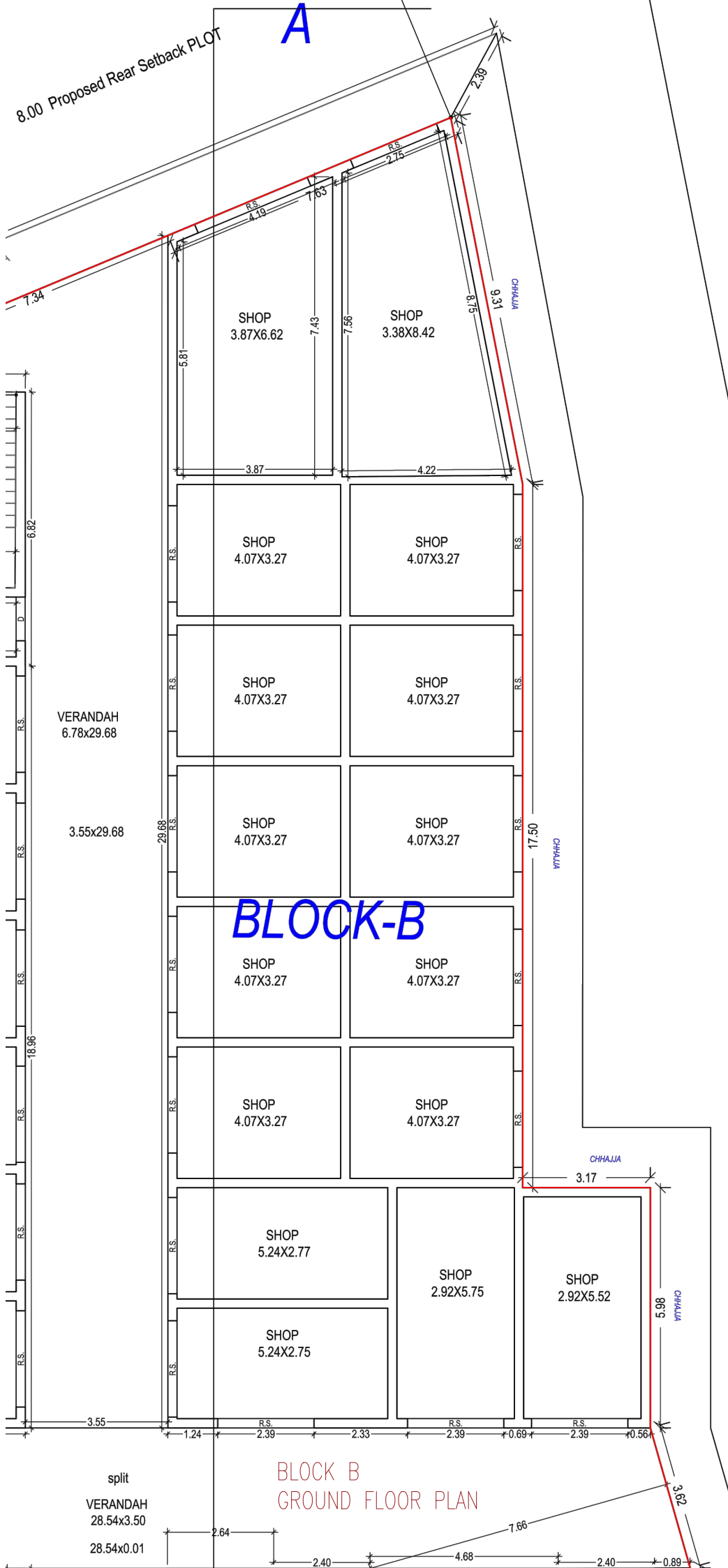
split

VERANDAH
28.54x3.50

28.54x0.01

8.00 Proposed Rear Setback PLOT

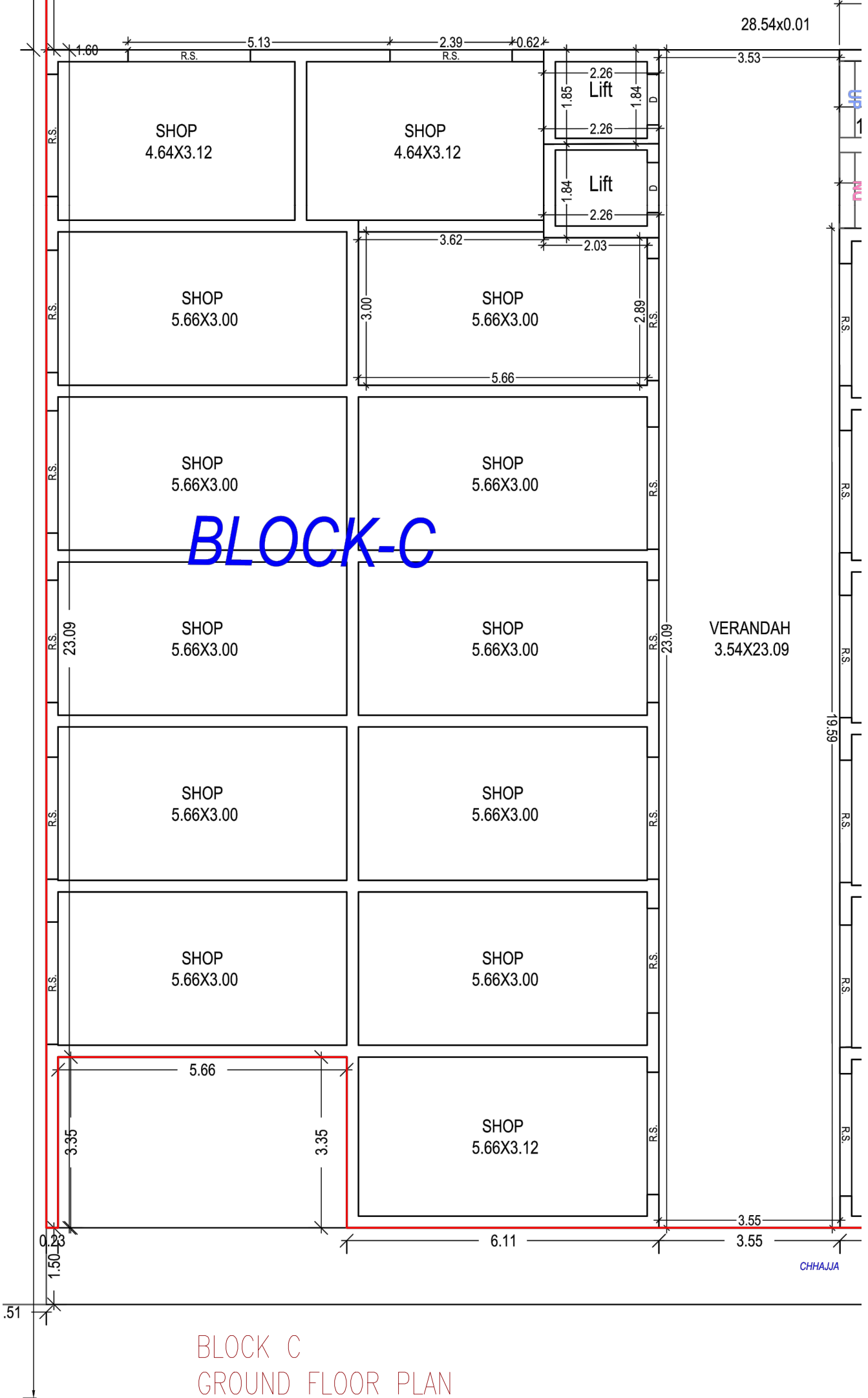
A

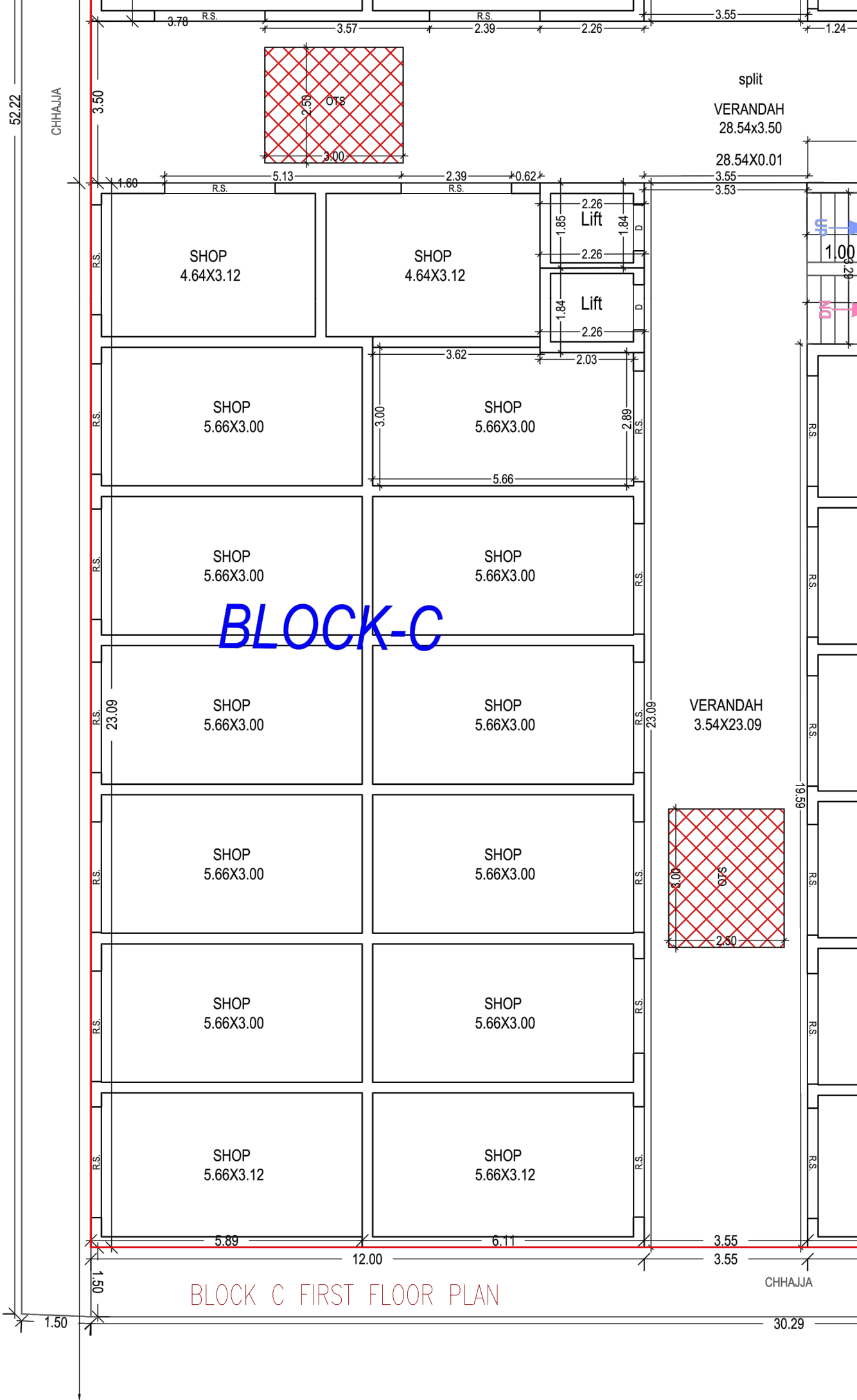


BLOCK-B

BLOCK B
GROUND FLOOR PLAN

split
VERANDAH
28.54x3.50
28.54x0.01

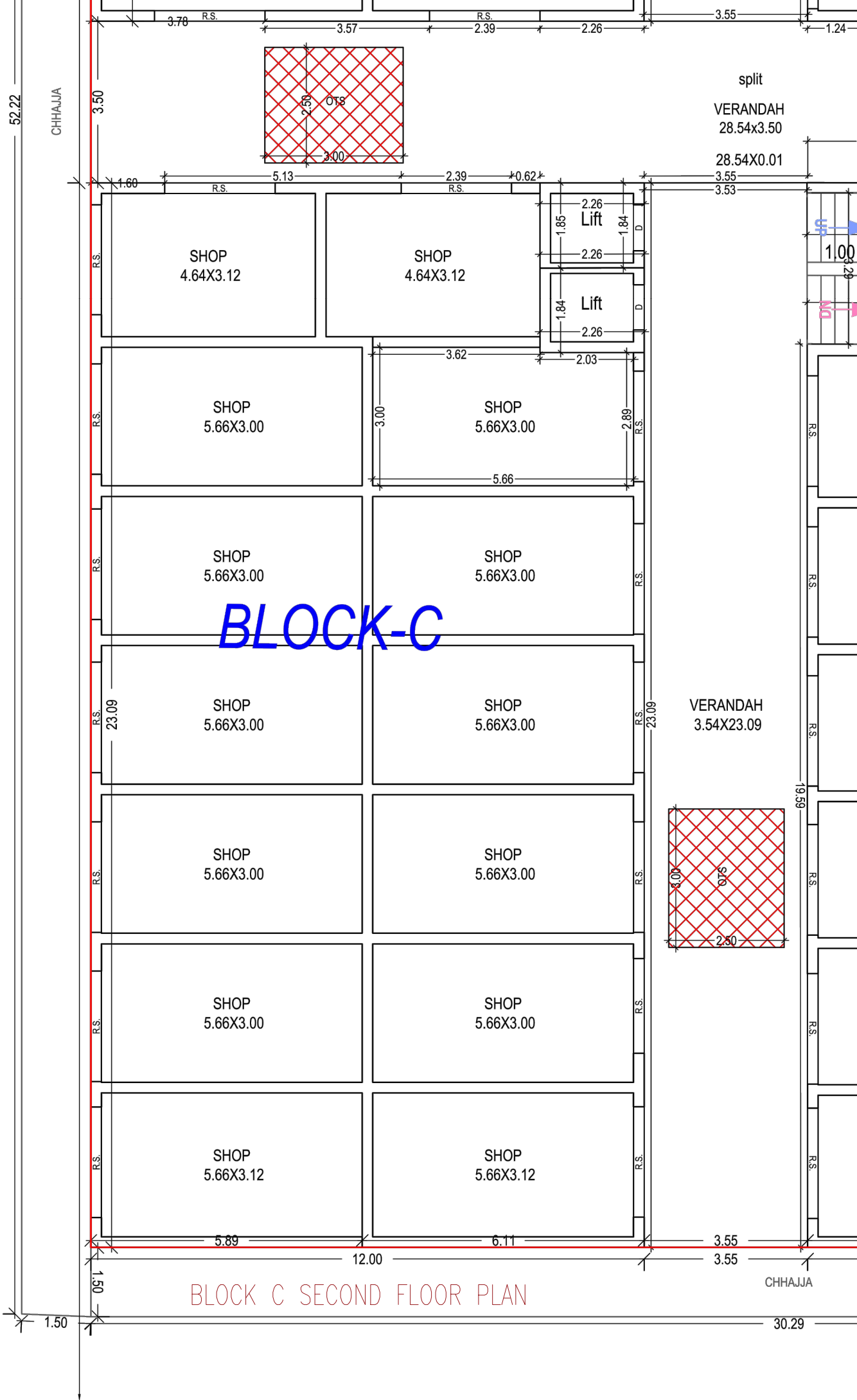




BLOCK-C

BLOCK C FIRST FLOOR PLAN

52.22 CHHAJJA 3.50 3.70 R.S. 3.57 R.S. 2.39 R.S. 2.26 3.55 1.24 split VERANDAH 28.54x3.50 28.54X0.01 1.60 R.S. 5.13 R.S. 2.39 R.S. 0.62 3.55 3.53 2.26 Lift 1.85 1.84 D 2.26 1.84 Lift 2.26 3.62 2.03 3.00 SHOP 5.66X3.00 SHOP 5.66X3.00 2.89 R.S. 5.66 R.S. SHOP 5.66X3.00 SHOP 5.66X3.00 R.S. R.S. 23.09 SHOP 5.66X3.00 SHOP 5.66X3.00 R.S. R.S. 23.09 VERANDAH 3.54X23.09 R.S. R.S. 19.59 SHOP 5.66X3.00 SHOP 5.66X3.00 R.S. R.S. 3.00 OTS 2.50 5.89 12.00 6.11 3.55 3.55 CHHAJJA 05.1 1.50 30.29



BLOCK-C

BLOCK C SECOND FLOOR PLAN

split
 VERANDAH
 28.54x3.50
 28.54X0.01

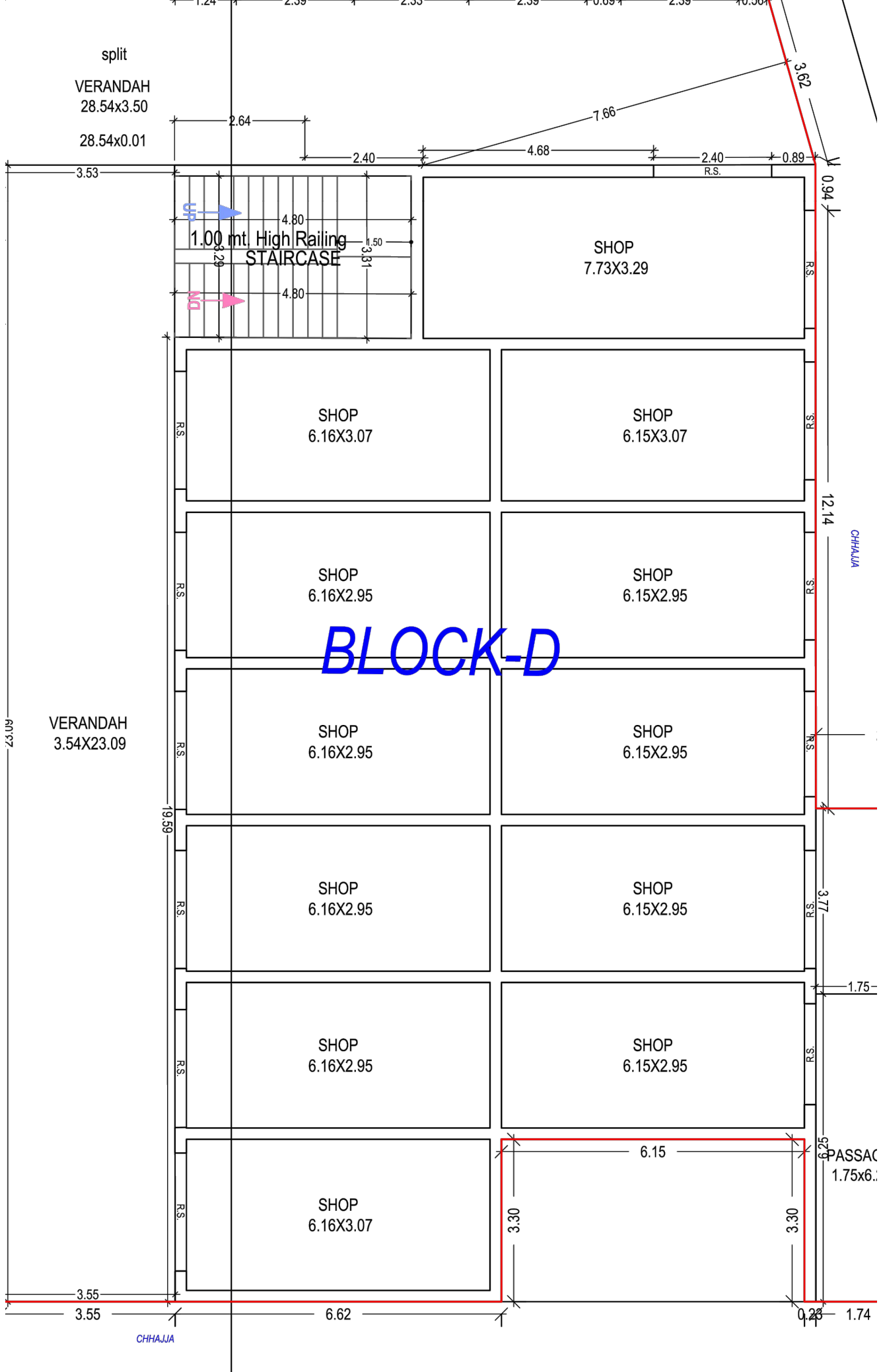
VERANDAH
 3.54X23.09

52.22

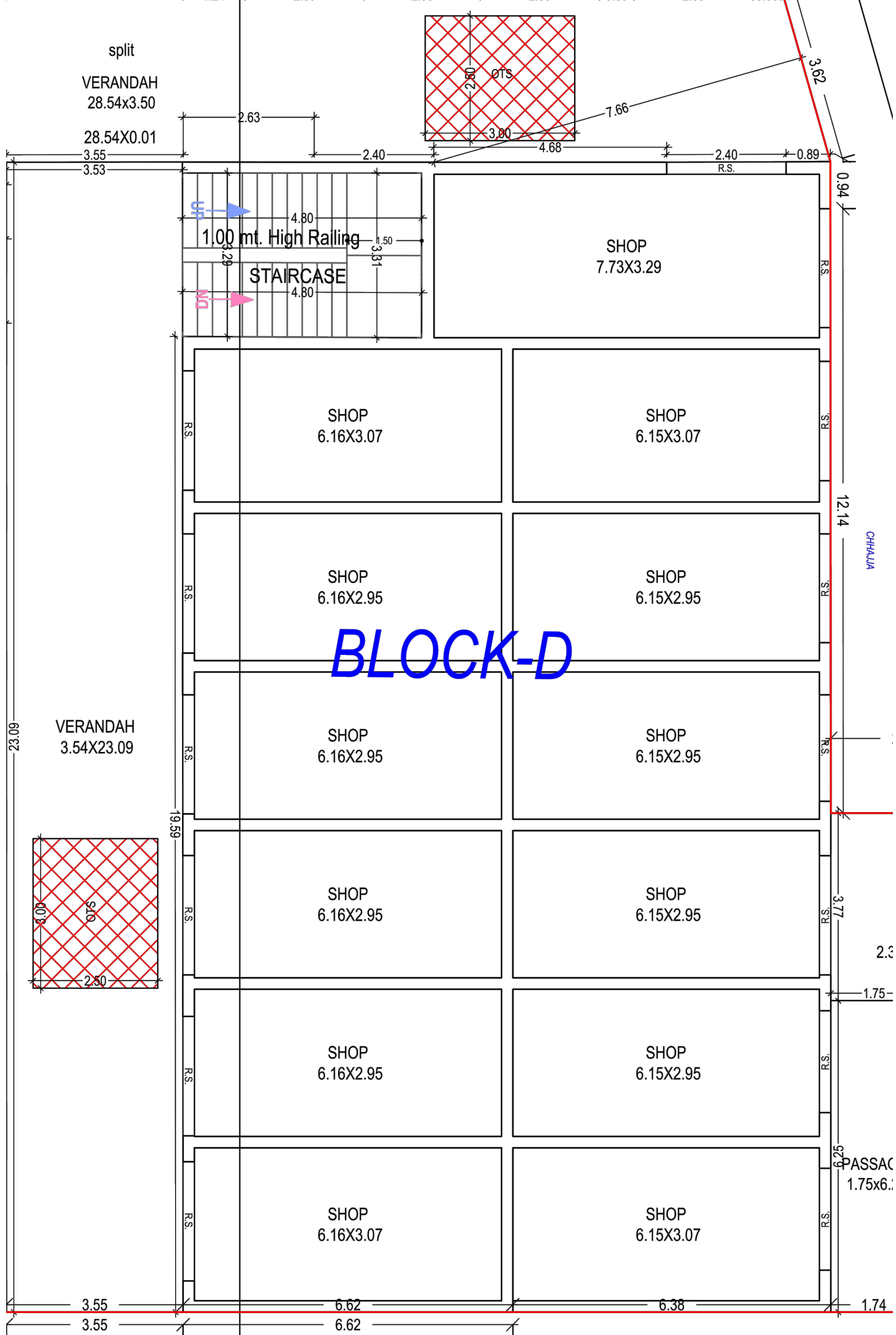
CHHAJJA

CHHAJJA

30.29

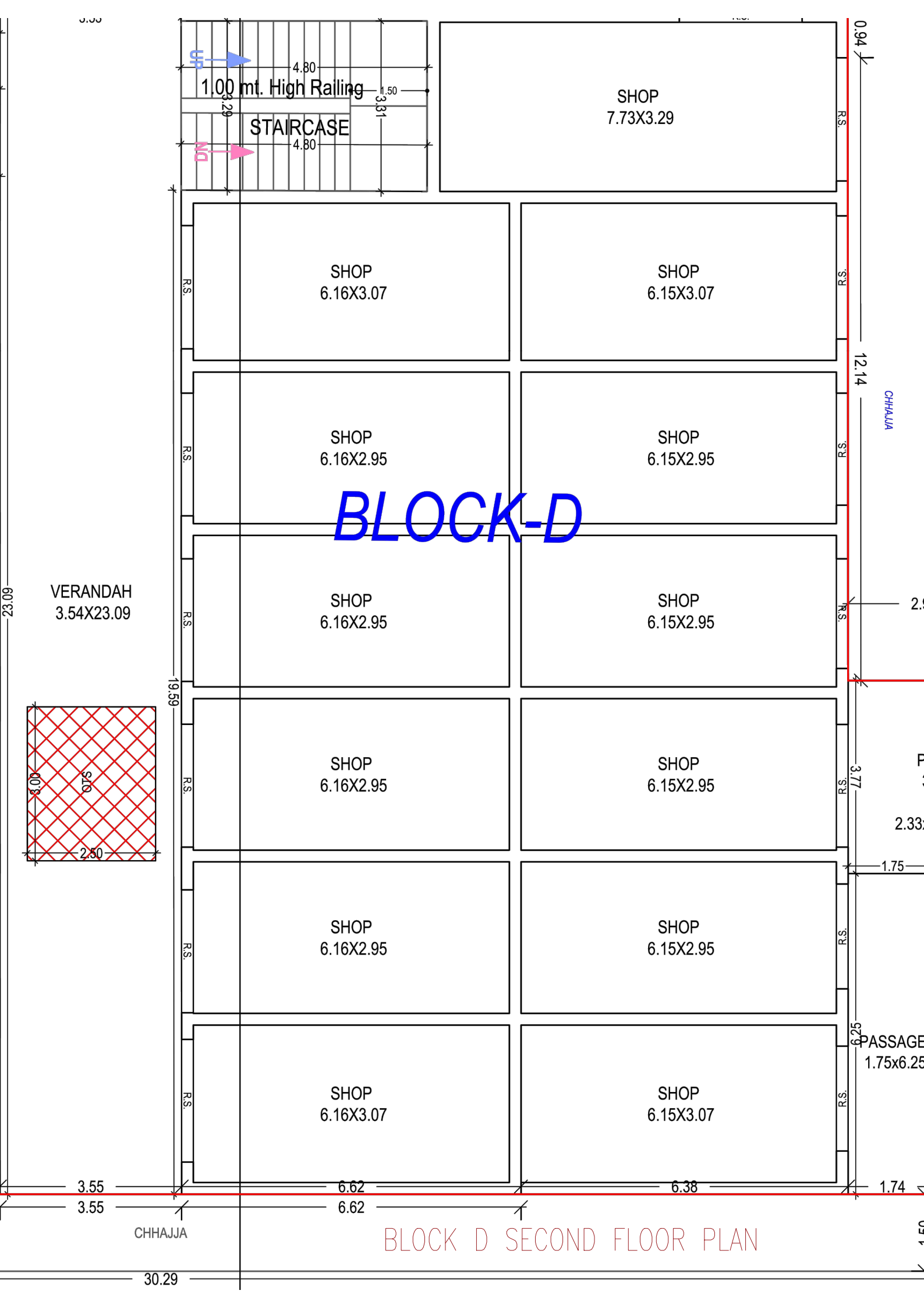


BLOCK D
GROUND FLOOR PLAN



BLOCK-D

BLOCK D FIRST FLOOR PLAN



1.00 mt. High Railing

STAIRCASE

SHOP
7.73X3.29

SHOP
6.16X3.07

SHOP
6.15X3.07

SHOP
6.16X2.95

SHOP
6.15X2.95

SHOP
6.16X2.95

SHOP
6.15X2.95

SHOP
6.16X2.95

SHOP
6.15X2.95

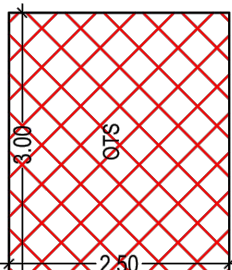
SHOP
6.16X2.95

SHOP
6.15X2.95

SHOP
6.16X3.07

SHOP
6.15X3.07

VERANDAH
3.54X23.09



BLOCK-D

BLOCK D SECOND FLOOR PLAN

CHHAJJA

CHHALAJA

PASSAGE
1.75x6.25

3.55

3.55

30.29

6.62

6.62

6.38

1.74

0.94

12.14

2.33

3.77

1.75

5.29

