

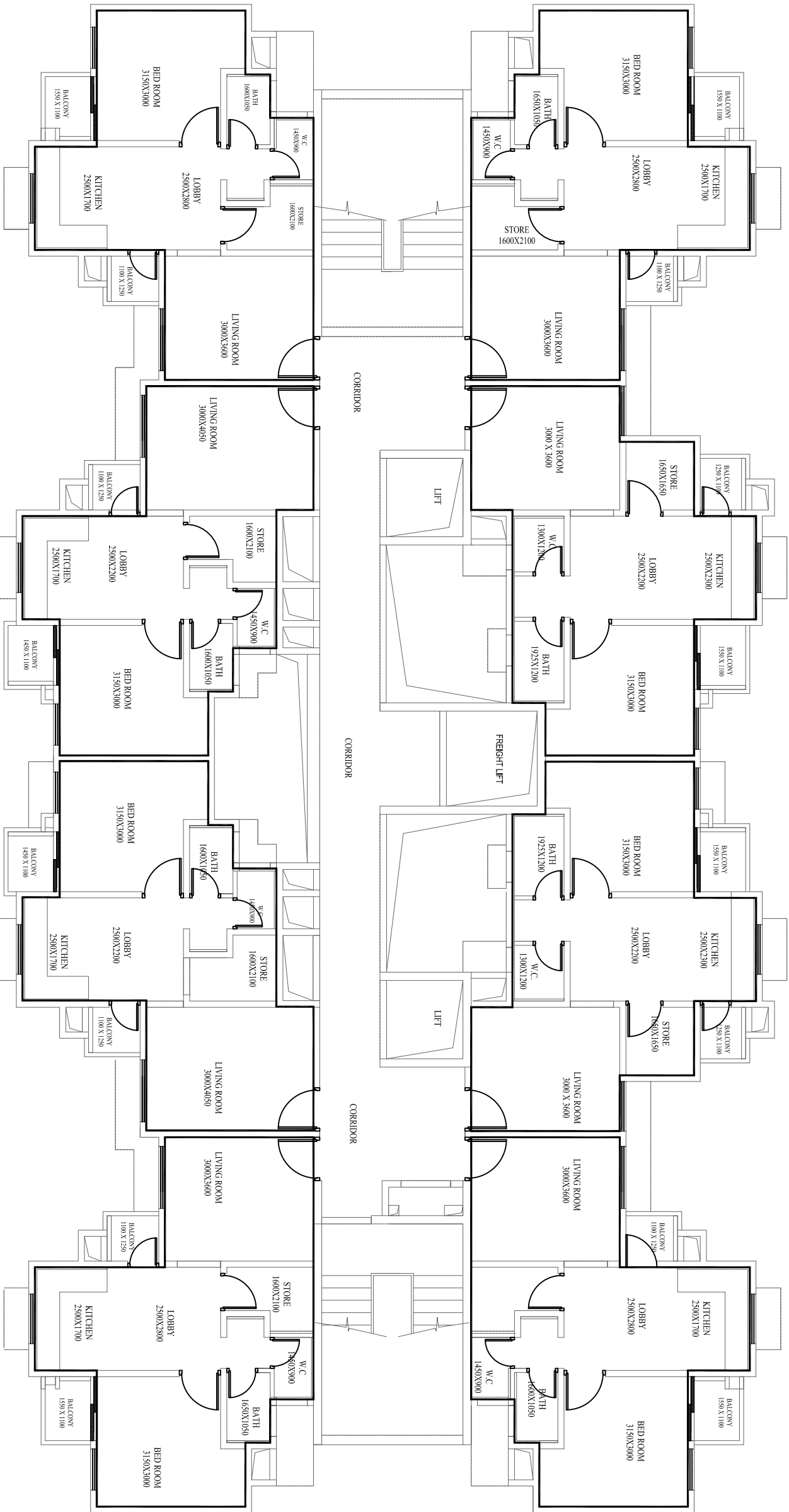
TOWER - H3 (1BHK)

FLAT NO. =3
CARPET AREA =41.88 SQ.M
NO. OF BALCONIES =2
TOTAL BALCONY AREA =3.08 SQ.M

FLAT NO. =4
CARPET AREA =42.68 SQ.M
NO. OF BALCONIES =2
TOTAL BALCONY AREA =3.08 SQ.M

FLAT NO. =5
CARPET AREA =42.68 SQ.M
NO. OF BALCONIES =2
TOTAL BALCONY AREA =3.08 SQ.M

FLAT NO. =6
CARPET AREA =41.88 SQ.M
NO. OF BALCONIES =2
TOTAL BALCONY AREA =3.08 SQ.M



FLAT NO. =2
CARPET AREA =41.88 SQ.M
NO. OF BALCONIES =2
TOTAL BALCONY AREA =3.08 SQ.M

FLAT NO. =1
CARPET AREA =41.66 SQ.M
NO. OF BALCONIES =2
TOTAL BALCONY AREA =2.97 SQ.M

FLAT NO. =8
CARPET AREA =41.66 SQ.M
NO. OF BALCONIES =2
TOTAL BALCONY AREA =2.97 SQ.M

FLAT NO. =7
CARPET AREA =41.88 SQ.M
NO. OF BALCONIES =2
TOTAL BALCONY AREA =3.08 SQ.M