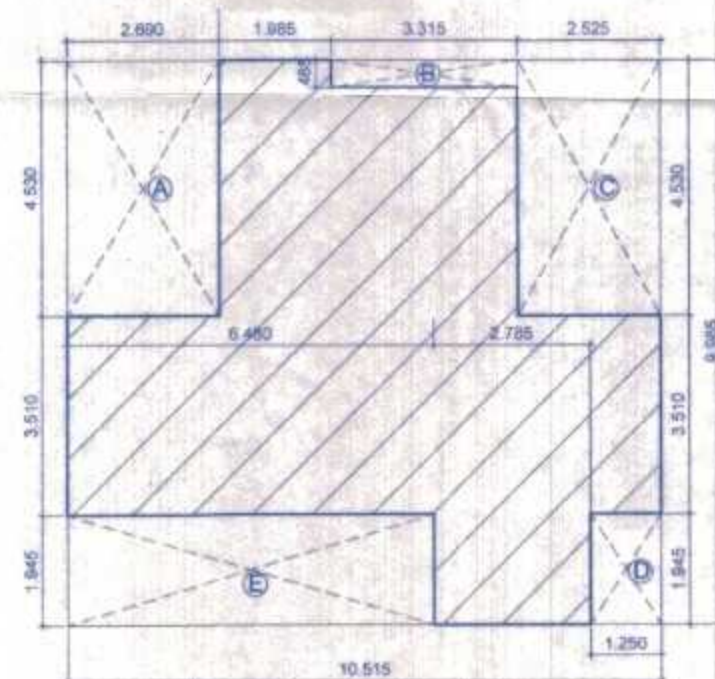
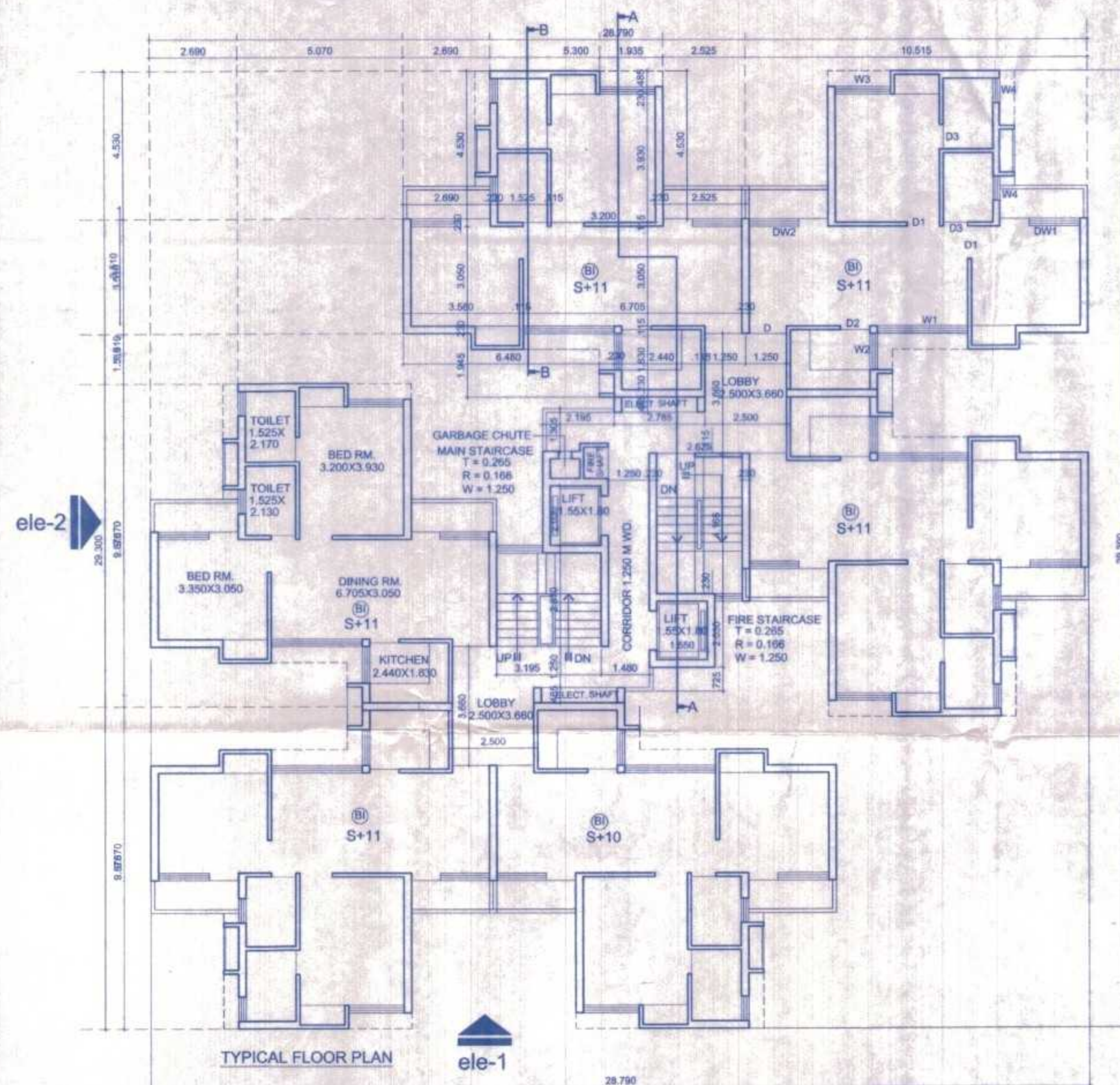
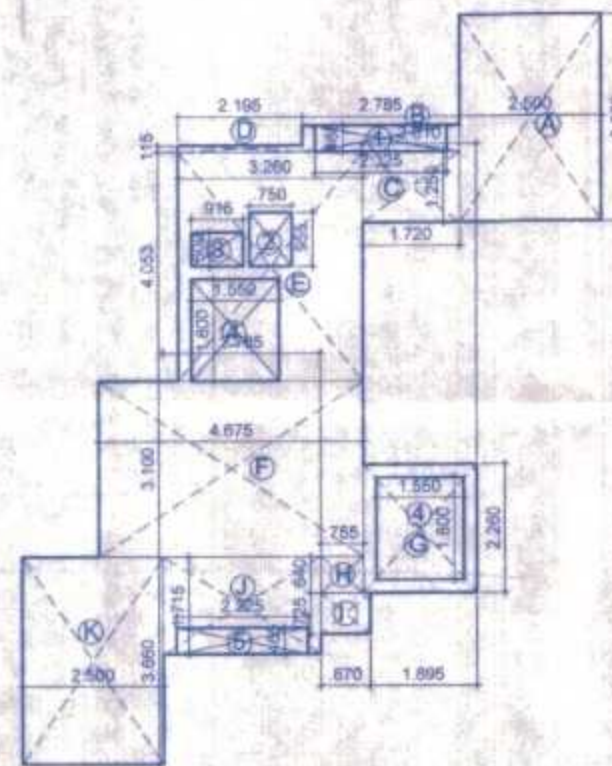


JE



UNIT AREA = ((10.515 X 9.985) - (LESS AREA))
 = ((84.915) - (LESS AREA))
 = 104.992 - 40.264 = 64.728 SQM

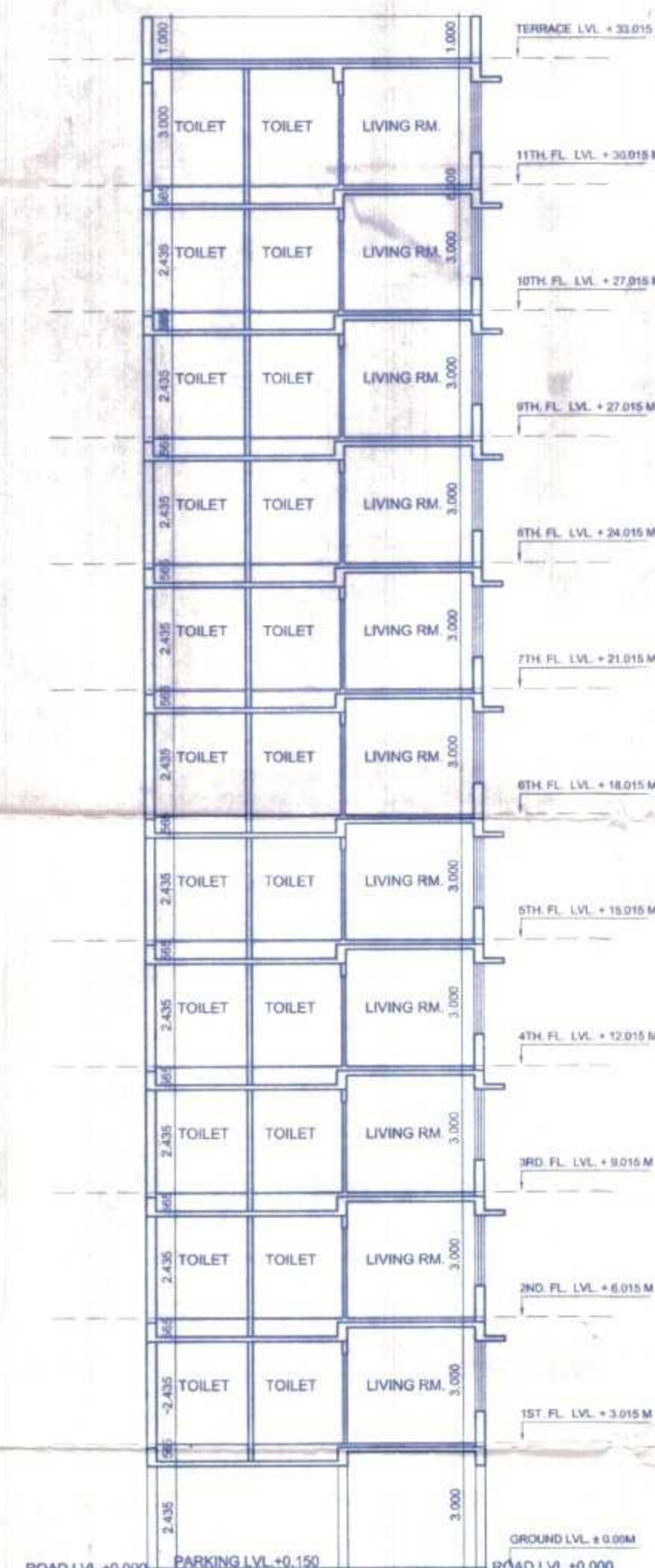
LESS AREA
 A = 2.690 X 4.530 = 12.185 SQM
 B = 3.315 X 0.485 = 1.607 SQM
 C = 2.525 X 4.530 = 11.438 SQM
 D = 1.250 X 1.945 = 2.431 SQM
 E = 6.480 X 1.945 = 12.603 SQM
TOTAL = 40.264 SQM



A = 2.500 X 3.660 = 9.150 SQM
 B = 2.785 X 0.485 = 1.295 SQM
 C = 1.720 X 1.250 = 2.150 SQM
 D = 2.195 X 0.115 = 0.252 SQM
 E = 3.280 X 4.050 = 13.203 SQM
 F = 4.675 X 3.100 = 14.492 SQM
 G = 2.010 X 2.260 = 4.542 SQM
 H = 0.755 X 0.640 = 0.486 SQM
 I = 0.870 X 0.725 = 0.634 SQM
 J = 2.785 X 1.715 = 4.776 SQM
 K = 2.500 X 3.660 = 9.150 SQM
TOTAL = 60.130 SQM

LESS AREA
 1 = 2.325 X 0.465 = 1.081 SQM
 2 = 0.750 X 0.955 = 0.716 SQM
 3 = 0.915 X 0.600 = 0.549 SQM
 4 = 1.550 X 1.800X2 = 5.580 SQM
 5 = 2.325 X 0.465 = 1.081 SQM
TOTAL = 9.007 SQM

NET CORE AREA = ((TYPICAL CORE) - (LESS AREA))
 = ((60.130) - (9.007))
 = 51.123 SQM



मेरठ विकास प्राधिकरण
 मेरठ
 मानचित्र नं. 1094/09
 दिनांक 28/01/10 से दिनांक 27/01/10 तक
 नवीनीकरण

मेरठ विकास प्राधिकरण
 मानचित्र नं. 1094/09
 दिनांक 28/01/10 से दिनांक 27/01/10 तक
 नवीनीकरण

मेरठ विकास प्राधिकरण
 मानचित्र नं. 1094/09
 दिनांक 28/01/10 से दिनांक 27/01/10 तक
 नवीनीकरण

आवृत्ति के रूप में नवीनीकरण
 नवीनीकरण करने के लिए

नवीनीकरण करने के लिए नवीनीकरण
 नवीनीकरण करने के लिए नवीनीकरण

नवीनीकरण करने के लिए नवीनीकरण
 नवीनीकरण करने के लिए नवीनीकरण

नवीनीकरण करने के लिए नवीनीकरण
 नवीनीकरण करने के लिए नवीनीकरण

OWNERS SIGN
 Deputy Director (Works)
 Air Force Naval Housing
 Air Force Station, New Delhi - 110001

ARCHITECTS SIGN
 GARG & ASSOCIATES
 40, J. P. Road,
 Connaught Place,
 New Delhi - 110001

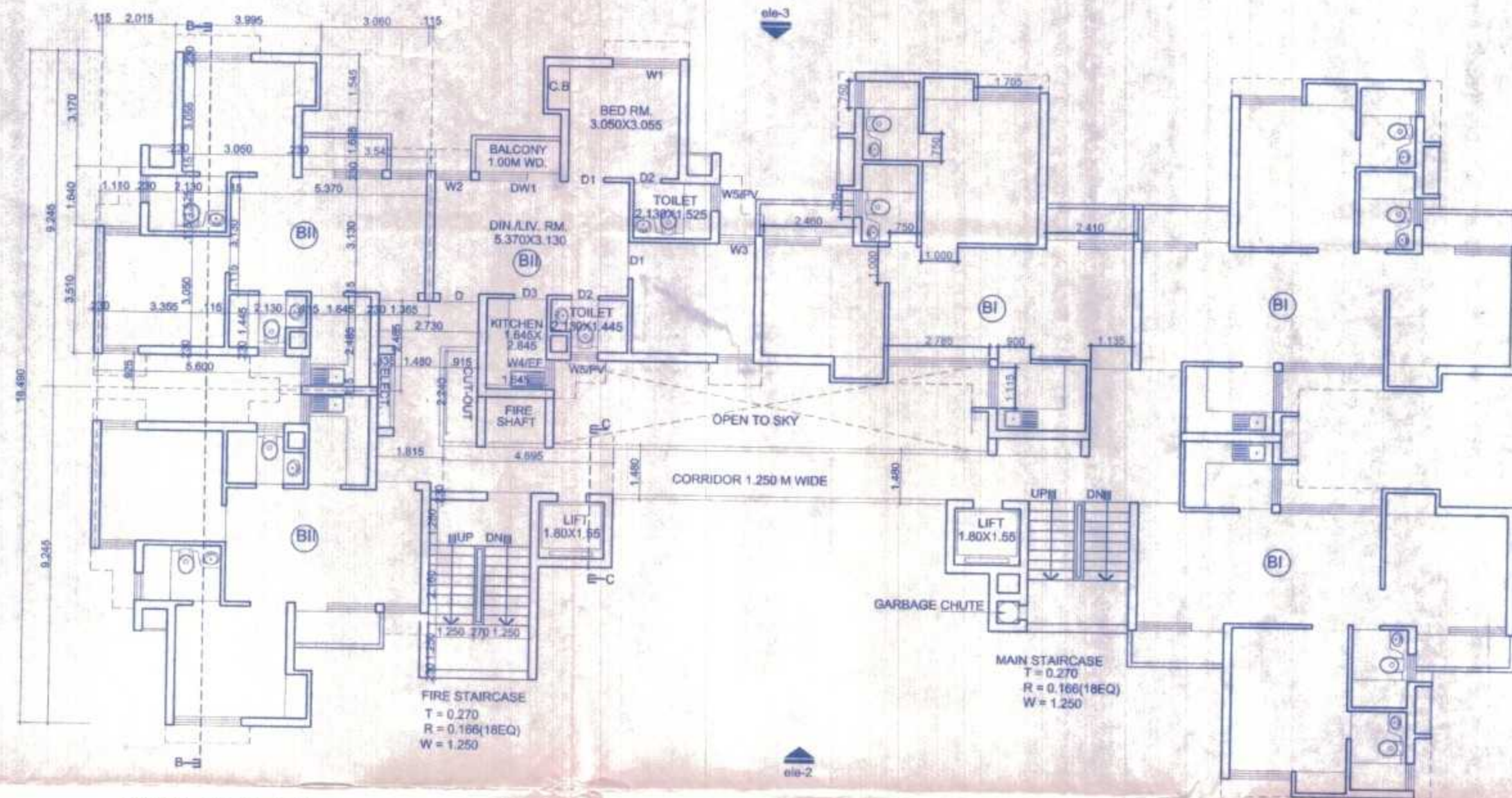
CLIENT

ARCHITECTS -
GARG & ASSOCIATES
 ARCHITECTS, ENGINEERS, PLANNERS
 40, REGAL BUILDING, CONN. PLACE
 NEW DELHI - 110001
 PHONE - 011-23742808, 23742509

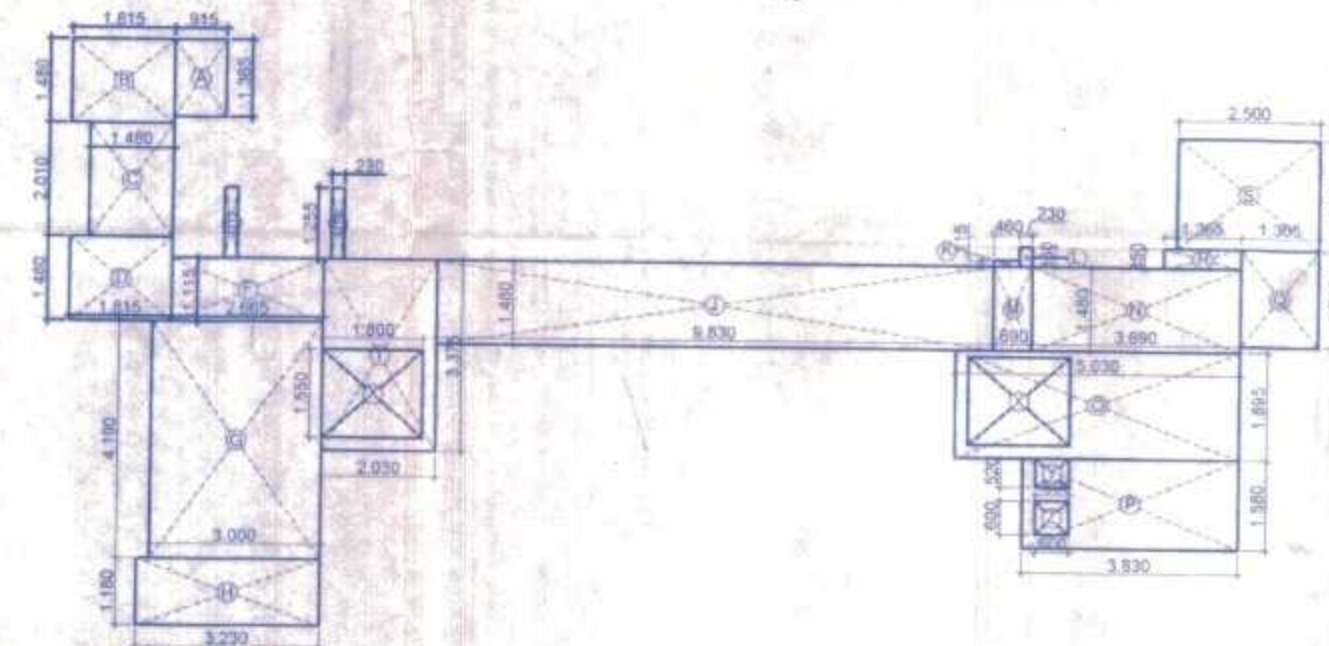
PROPOSED GROUP HOUSING FOR
AIR FORCE NAVAL HOUSING
AT PLOT NO. -
SECTOR 4 B PART
MEERUT

SHEET TITLE
SUBMISSION DRG.
TYPICAL FLOOR PLAN - B

मेरठ विकास प्राधिकरण
 मानचित्र नं. 1094/09
 दिनांक 28/01/10 से दिनांक 27/01/10 तक
 नवीनीकरण



TYPICAL FLOOR PLAN
(2ND. FL. TO 10TH. FL. PLAN)



TYPICAL CORE AREA

A)	0.915 X 1.365 X 1 = 1.249 SQM
B)	1.815 X 1.480 X 1 = 2.686 SQM
C)	1.480 X 2.010 X 1 = 2.975 SQM
D)	1.815 X 1.480 X 1 = 2.686 SQM
E)	0.230 X 1.255 X 2 = 0.577 SQM
F)	2.665 X 1.115 X 1 = 2.975 SQM
G)	3.090 X 4.180 X 1 = 12.870 SQM
H)	3.230 X 1.180 X 1 = 3.811 SQM
I)	2.030 X 3.375 X 1 = 6.851 SQM
J)	0.830 X 1.430 X 1 = 1.187 SQM
K)	0.480 X 0.115 X 1 = 0.055 SQM
L)	0.230 X 0.350 X 1 = 0.081 SQM
M)	0.690 X 1.480 X 1 = 1.021 SQM
N)	3.090 X 1.480 X 1 = 4.561 SQM
O)	0.230 X 1.895 X 1 = 0.435 SQM
P)	3.830 X 1.560 X 1 = 5.955 SQM
Q)	3.365 X 1.715 X 1 = 5.768 SQM
R)	1.355 X 0.350 X 1 = 0.474 SQM
S)	2.500 X 1.845 X 1 = 4.613 SQM
TOTAL	= 80.315 SQM

LESS -

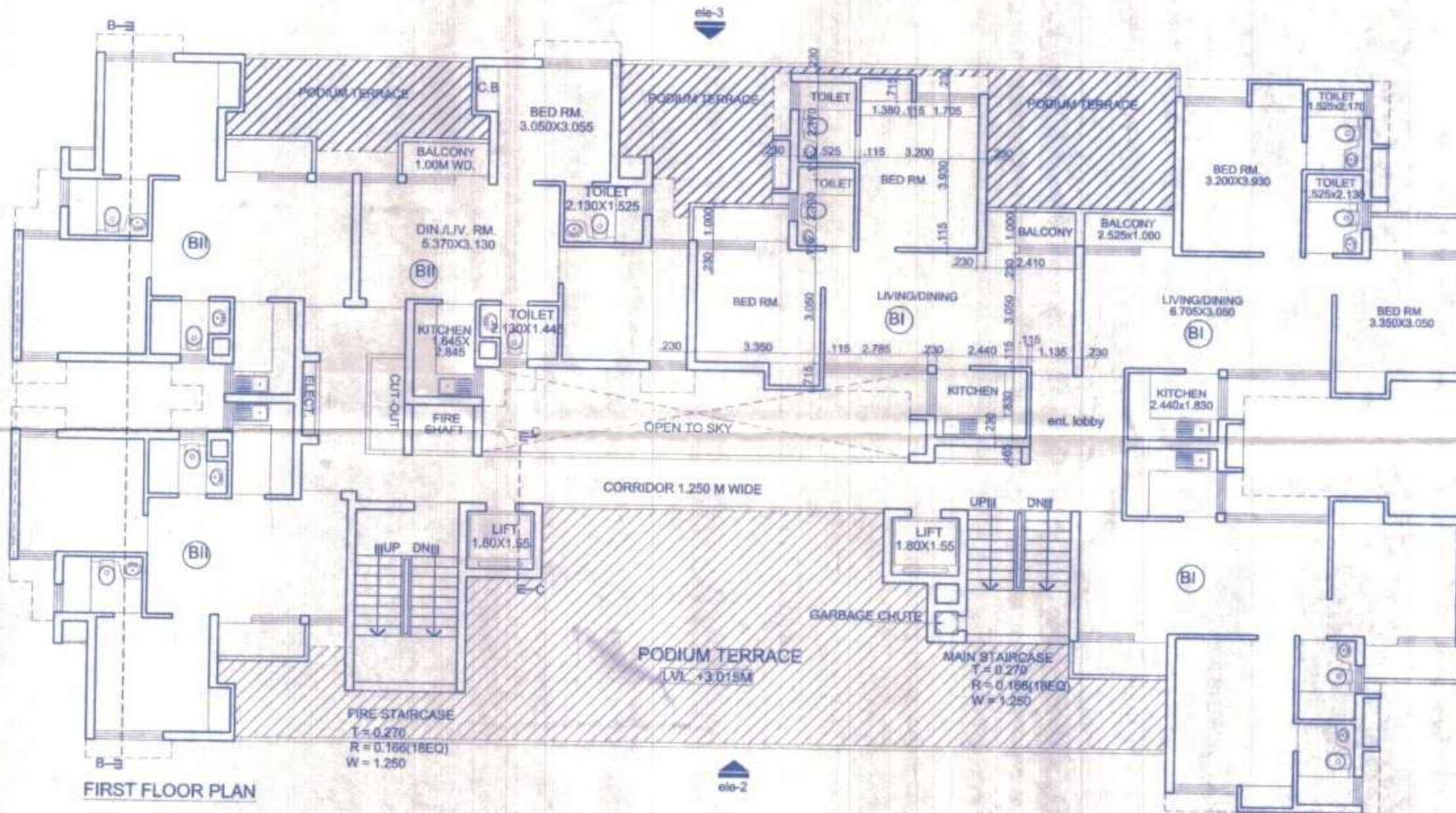
X)	1.800 X 1.500 X 2 = 5.400 SQM
Y)	0.690 X 0.520 X 1 = 0.359 SQM
Z)	0.690 X 0.690 X 1 = 0.476 SQM
TOTAL	= 6.235 SQM

PER FLAT CORE AREA

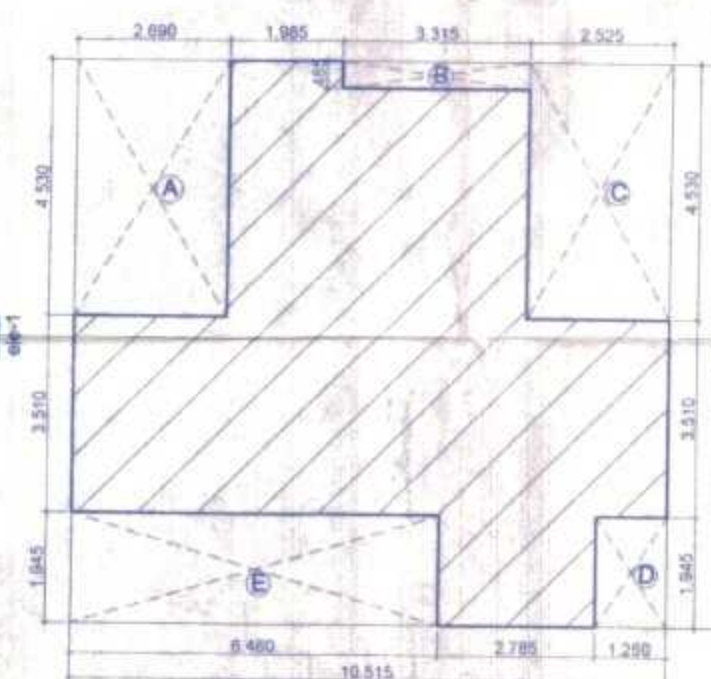
80.315 - 6.235	= 74.080 SQM
74.080 / 6	= 12.343 SQM

DOORS & WINDOWS SCHEDULE

D	= 1.135 X 2.435
D1	= 1.000 X 2.100
D2	= 900 X 2.100
D3	= 780 X 2.100
W	= 2.785 X 2.135
W1	= 1.705 X 1.035
W1F	= 1.115 X 1.035
W1P	= 750 X 1.235
DW	= 2.480 X 2.135
DW1	= 2.410 X 2.135



FIRST FLOOR PLAN



UNIT AREA DETAIL TYPE-C

UNIT AREA = ((10.515 X 9.985) - (LESS AREA))

= ((84.915) - (LESS AREA))

= 104.992 - 40.264 = 64.728 SQM

LESS AREA

A	= 2.690 X 4.530 = 12.185 SQM
B	= 3.315 X 0.485 = 1.607 SQM
C	= 2.525 X 4.530 = 11.438 SQM
D	= 1.250 X 1.945 = 2.431 SQM
E	= 6.480 X 1.945 = 12.603 SQM
TOTAL	= 40.264 SQM

OWNERS SIGN	
ARCHITECTS SIGN	
CLINT	
ARCHITECTS -	GARG & ASSOCIATES
ARCHITECTS, ENGINEERS, PLANNERS	48, REGAL BUILDING, CONN. PLACE
NEW DELHI - 110001	PHONE - 011-23742808, 23742509

PROPOSED GROUP HOUSING FOR
AIR FORCE NAVAL HOUSING BOARD
AT PLOT NO. -
SECTOR 4 B PART
MEERUT

SUBMITTAL DRG.
TYPICAL FLOOR PLAN
(2ND. FL. TO 10TH. FL. PLAN)
FIRST FLOOR PLAN
(BLOCK-B)

DATE	DEALT BY	NORTH
CKD BY	SCALE	
DRG. NO	1:100	