

DRG. NO. AREA STATEMENT

AREA CHART DETAIL DRAWING

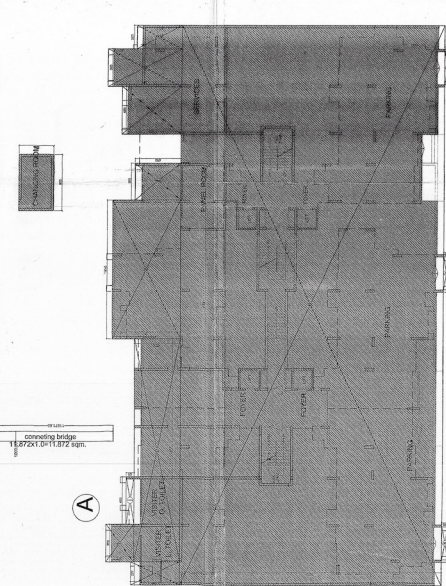
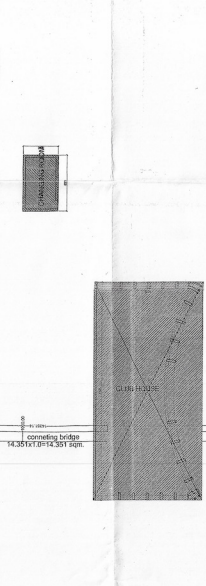
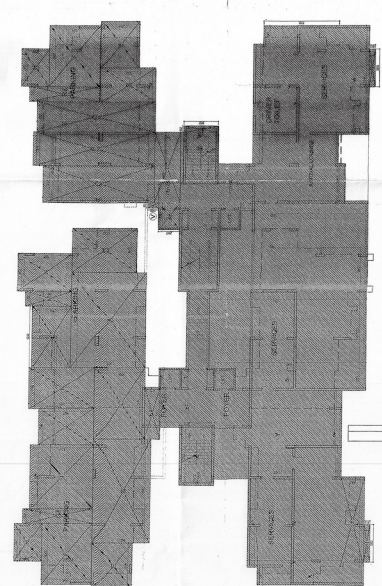
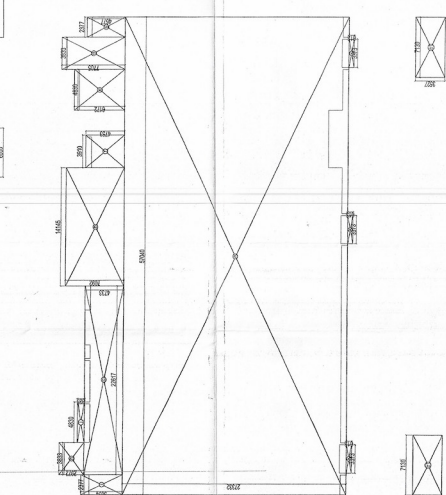
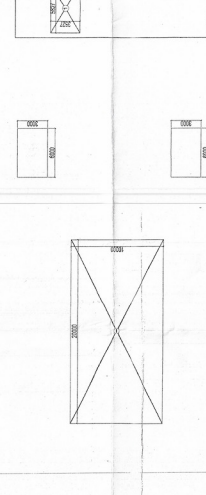
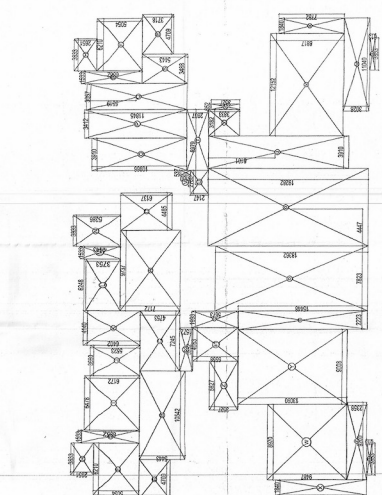
- A- 6.70X71.172 = 60.833Sqmt.
- B- 10.542X3.443 = 36.505Sqmt.
- C- 7.245X1.753 = 12.704Sqmt.
- D- 4.800X3.719 = 17.851Sqmt.
- E- 2.621X0.654 = 1.716Sqmt.
- F- 3.910X4.783 = 18.684Sqmt.
- G- 2.377X4.677 = 11.118Sqmt.
- H- 1.623X3.721 = 6.059Sqmt.
- I- 3.890X5.523 = 21.545Sqmt.
- J- 4.140X3.402 = 14.090Sqmt.
- K- 4.140X3.402 = 14.090Sqmt.
- L- 1.533X3.892 = 5.966Sqmt.
- M- 1.533X3.892 = 5.966Sqmt.
- N- 3.833X4.286 = 16.403Sqmt.
- O- 3.910X1.986 = 7.761Sqmt.
- P- 3.057X11.616 = 35.623Sqmt.
- Q- 3.057X11.616 = 35.623Sqmt.
- R- 1.533X3.892 = 5.966Sqmt.
- S- 2.322X2.807 = 6.520Sqmt.
- T- 2.760X2.147 = 5.925Sqmt.
- U- 6.537X1.150 = 7.511Sqmt.
- V- 6.537X1.150 = 7.511Sqmt.
- W- 1.840X10.910 = 20.058Sqmt.
- X- 9.008X13.050 = 117.914Sqmt.
- Y- 5.827X3.127 = 18.305Sqmt.
- Z- 5.827X3.127 = 18.305Sqmt.

- a- 57.040X7.332 = 418.017Sqmt.
- b- 14.145X7.932 = 112.216Sqmt.
- c- 22.677X4.733 = 107.349Sqmt.
- d- 4.800X3.719 = 17.851Sqmt.
- e- 4.800X3.719 = 17.851Sqmt.
- f- 3.910X4.783 = 18.684Sqmt.
- g- 2.377X4.677 = 11.118Sqmt.
- h- 1.623X3.721 = 6.059Sqmt.
- i- 3.890X5.523 = 21.545Sqmt.
- j- 4.140X3.402 = 14.090Sqmt.
- k- 3.377X4.677 = 15.686Sqmt.
- l- 4.830X0.826 = 3.984Sqmt.
- m- 6.145X2.133 = 13.107Sqmt.
- n- 8.585X19.679 = 168.605Sqmt.
- o- 2.032X2.358 = 4.784Sqmt.
- p- 2.032X2.358 = 4.784Sqmt.
- q- 2.032X2.358 = 4.784Sqmt.
- r- 2.032X2.358 = 4.784Sqmt.
- s- 1.963X3.673 = 7.211Sqmt.
- t- 1.963X3.673 = 7.211Sqmt.
- u- 3.910X16.843 = 65.747Sqmt.
- v- 12.120X3.892 = 47.172Sqmt.
- w- 1.840X10.910 = 20.058Sqmt.
- x- 1.840X7.782 = 14.319Sqmt.
- y- 3.182X3.833 = 12.197Sqmt.
- z- 0.652X3.327 = 2.180Sqmt.

IG

- 81- 4.093X5.268 = 21.553Sqmt.
- 82- 5.262X4.572 = 23.965Sqmt.
- 83- 2.77130X3.577 = 9.912Sqmt.
- 84- 1.933X1.820 = 3.519Sqmt.
- 85- 4.782X2.300 = 11.003Sqmt.
- 86- 2.284X4.140 = 9.467Sqmt.
- 87- 2.718X3.389 = 9.211Sqmt.
- 88- 5.942X3.527 = 21.057Sqmt.
- 89- 1.963X3.673 = 7.211Sqmt.
- 90- 1.963X3.673 = 7.211Sqmt.
- 91- 1.963X3.673 = 7.211Sqmt.
- 92- 1.963X3.673 = 7.211Sqmt.
- 93- 1.963X3.673 = 7.211Sqmt.
- 94- 1.963X3.673 = 7.211Sqmt.
- 95- 1.963X3.673 = 7.211Sqmt.
- 96- 1.963X3.673 = 7.211Sqmt.
- 97- 1.963X3.673 = 7.211Sqmt.
- 98- 1.963X3.673 = 7.211Sqmt.
- 99- 1.963X3.673 = 7.211Sqmt.
- 100- 1.963X3.673 = 7.211Sqmt.

STILT AREA = 161.950x971.79 SQM.
 bridge area=stilt area+far=2970.84



SUBMISSION DRAWING
 SHEET NO. GROUND FLOOR PLAN
 PROJECT NO. KAMRUP HOUSING PROJECTS (PVT) LTD.
 PLOT NO. GRAMA SEKTOR (S/1)
 GREATER NOIDA.
 DATE: 15/07/2021
 DESIGNED BY: [Signature]
 CHECKED BY: [Signature]
 APPROVED BY: [Signature]

TRUE COPY
 For KAMRUP HOUSING PROJECTS (PVT) LTD.
 Authorized Signatory,
 Date: 15/07/2021