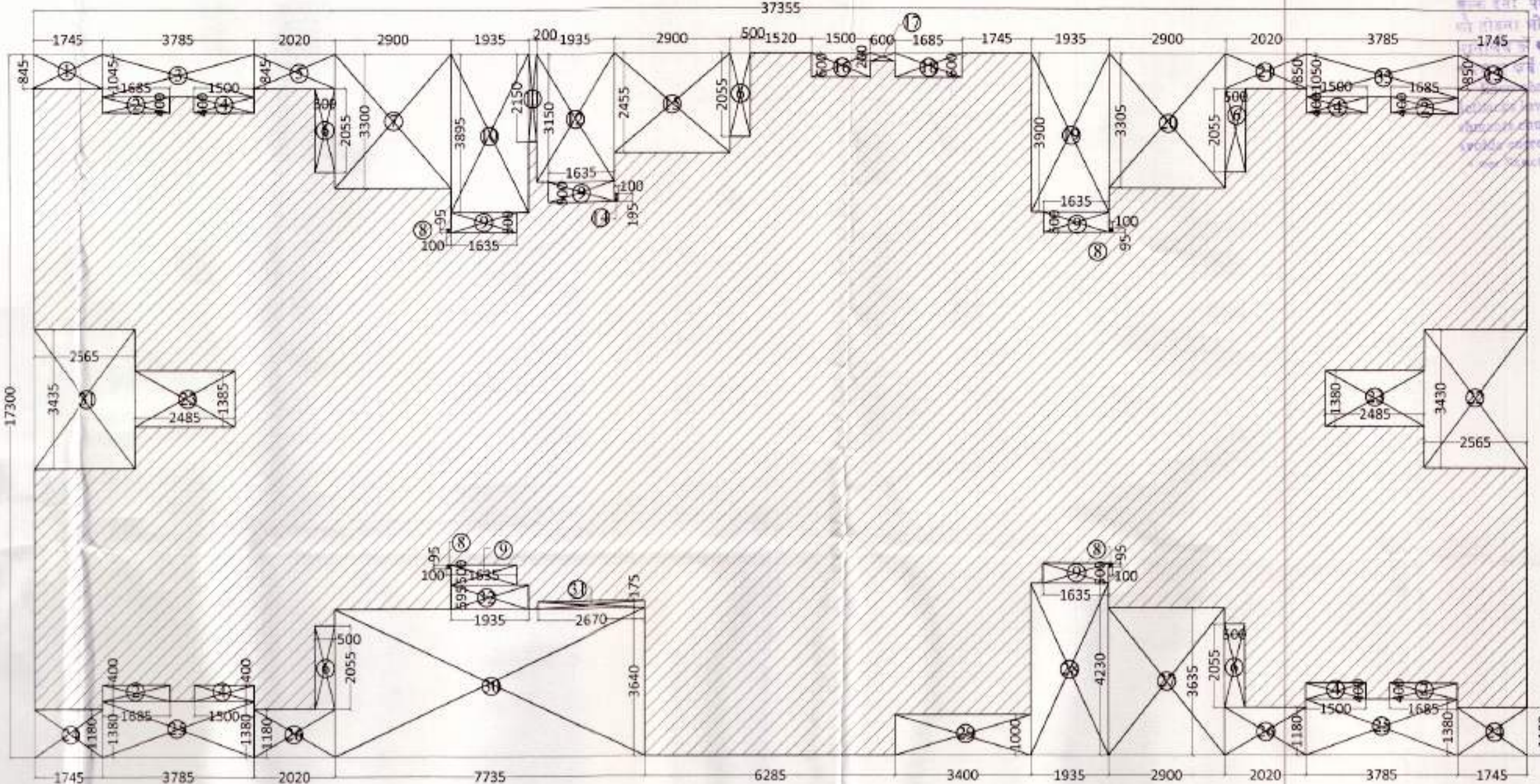


TYPICAL FLOOR AREA DETAIL PLAN

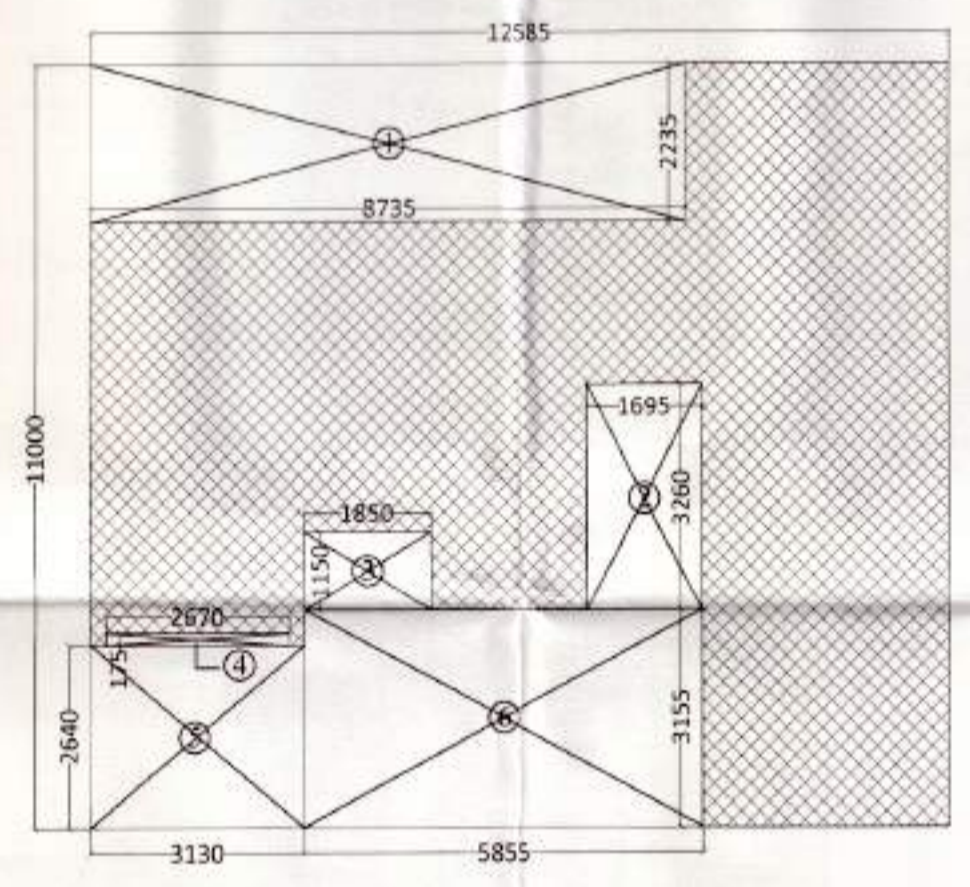
TYPICAL FLOOR AREA DETAIL IN F.A.R					
ITEM	WIDTH	LENGTH	NO	AREA(SQ M)	
1	37.386	X	16.300	1	608.887
				TOTAL	608.887
DEDUCTIONS					
ITEM	WIDTH	X	LENGTH	NO	AREA (SQM)
1	1.745	X	0.845	1	1.475
2	1.845	X	0.400	4	2.955
3	3.785	X	1.045	1	3.955
4	1.500	X	0.400	4	2.400
5	2.000	X	0.845	1	1.707
6	0.500	X	2.055	3	3.083
7	2.900	X	3.300	1	9.570
8	0.095	X	0.100	4	0.380
9	1.635	X	0.500	5	4.087
10	1.935	X	3.055	1	5.907
11	0.200	X	2.150	1	0.430
12	1.935	X	3.150	1	6.095
13	1.745	X	0.850	1	1.483
14	0.100	X	0.195	1	0.020
15	2.900	X	2.455	1	7.120
16	1.500	X	0.600	1	0.900
17	0.600	X	0.200	1	0.120
18	1.665	X	0.800	1	1.332
19	1.935	X	3.900	1	7.547
20	2.900	X	3.300	1	9.585
21	2.000	X	0.850	1	1.707
22	2.665	X	3.450	1	9.206
23	2.485	X	1.380	1	3.429
24	1.745	X	0.180	2	0.628
25	3.785	X	0.380	2	2.877
26	1.500	X	0.190	2	0.547
27	3.400	X	2.835	1	9.639
28	1.935	X	3.230	1	6.250
29	1.695	X	3.280	1	5.566
30	1.850	X	1.150	1	2.127
31	0.855	X	3.155	1	2.697
32	2.670	X	0.175	1	0.467
33	1.930	X	0.095	1	1.834
34	1.965	X	2.635	1	5.178
35	0.950	X	2.235	1	2.113
36	2.485	X	1.335	1	3.324
37	2.565	X	3.455	1	8.862
38	3.785	X	1.050	1	3.974
				TOTAL	170.890
TYPICAL FLOOR AREA DETAIL = (X) - (Y)					
NET TYPICAL FLOOR AREA DETAIL				438.697	

TYPICAL FLOOR AREA DETAIL IN F.A.R					
ITEM	WIDTH	LENGTH	NO	AREA(SQ M)	
1	37.386	X	16.300	1	608.887
				TOTAL	608.887
DEDUCTIONS					
ITEM	WIDTH	X	LENGTH	NO	AREA (SQM)
1	1.745	X	0.845	1	1.475
2	1.845	X	0.400	4	2.955
3	3.785	X	1.045	1	3.955
4	1.500	X	0.400	4	2.400
5	2.000	X	0.845	1	1.707
6	0.500	X	2.055	3	3.083
7	2.900	X	3.300	1	9.570
8	0.095	X	0.100	4	0.380
9	1.635	X	0.500	5	4.087
10	1.935	X	3.055	1	5.907
11	0.200	X	2.150	1	0.430
12	1.935	X	3.150	1	6.095
13	1.745	X	0.850	1	1.483
14	0.100	X	0.195	1	0.020
15	2.900	X	2.455	1	7.120
16	1.500	X	0.600	1	0.900
17	0.600	X	0.200	1	0.120
18	1.665	X	0.800	1	1.332
19	1.935	X	3.900	1	7.547
20	2.900	X	3.300	1	9.585
21	2.000	X	0.850	1	1.707
22	2.665	X	3.450	1	9.206
23	2.485	X	1.380	1	3.429
24	1.745	X	0.180	2	0.628
25	3.785	X	0.380	2	2.877
26	1.500	X	0.190	2	0.547
27	3.400	X	2.835	1	9.639
28	1.935	X	3.230	1	6.250
29	1.695	X	3.280	1	5.566
30	1.850	X	1.150	1	2.127
31	0.855	X	3.155	1	2.697
32	2.670	X	0.175	1	0.467
33	1.930	X	0.095	1	1.834
34	1.965	X	2.635	1	5.178
35	0.950	X	2.235	1	2.113
36	2.485	X	1.335	1	3.324
37	2.565	X	3.455	1	8.862
38	3.785	X	1.050	1	3.974
				TOTAL	170.890
TYPICAL FLOOR AREA DETAIL = (X) - (Y)					
NET TYPICAL FLOOR AREA DETAIL				438.697	



GROUND COVERAGE AREA DETAIL PLAN

GROUND COVERAGE AREA DETAIL IN F.A.R					
ITEM	WIDTH	LENGTH	NO	AREA(SQ M)	
1	17.300	X	17.300	1	299.290
				TOTAL	299.290
DEDUCTIONS					
ITEM	WIDTH	X	LENGTH	NO	AREA (SQM)
1	1.745	X	0.845	1	1.475
2	1.845	X	0.400	4	2.955
3	3.785	X	1.045	1	3.955
4	1.500	X	0.400	4	2.400
5	2.000	X	0.845	1	1.707
6	0.500	X	2.055	3	3.083
7	2.900	X	3.300	1	9.570
8	0.095	X	0.100	4	0.380
9	1.635	X	0.500	5	4.087
10	1.935	X	3.055	1	5.907
11	0.200	X	2.150	1	0.430
12	1.935	X	3.150	1	6.095
13	1.745	X	0.850	1	1.483
14	0.100	X	0.195	1	0.020
15	2.900	X	2.455	1	7.120
16	1.500	X	0.600	1	0.900
17	0.600	X	0.200	1	0.120
18	1.665	X	0.800	1	1.332
19	1.935	X	3.900	1	7.547
20	2.900	X	3.300	1	9.585
21	2.000	X	0.850	1	1.707
22	2.665	X	3.450	1	9.206
23	2.485	X	1.380	1	3.429
24	1.745	X	0.180	2	0.628
25	3.785	X	0.380	2	2.877
26	1.500	X	0.190	2	0.547
27	3.400	X	2.835	1	9.639
28	1.935	X	3.230	1	6.250
29	1.695	X	3.280	1	5.566
30	1.850	X	1.150	1	2.127
31	0.855	X	3.155	1	2.697
32	2.670	X	0.175	1	0.467
33	1.930	X	0.095	1	1.834
34	1.965	X	2.635	1	5.178
35	0.950	X	2.235	1	2.113
36	2.485	X	1.335	1	3.324
37	2.565	X	3.455	1	8.862
38	3.785	X	1.050	1	3.974
				TOTAL	174.316
GROUND COVERAGE AREA DETAIL = (X) - (Y)					
NET GROUND COVERAGE AREA DETAIL				471.936	



MUMTY/ MACHINE ROOM AREA DETAIL PLAN

MUMTY/MACHINE ROOM AREA DETAIL IN F.A.R					
ITEM	WIDTH	LENGTH	NO	AREA(SQ M)	
1	12.585	X	11.000	1	138.435
				TOTAL	138.435
DEDUCTIONS					
ITEM	WIDTH	X	LENGTH	NO	AREA (SQM)
1	8.735	X	2.235	1	19.523
2	1.695	X	3.280	1	5.566
3	1.850	X	1.150	1	2.127
4	2.670	X	0.175	1	0.467
5	3.130	X	2.640	1	8.263
6	0.855	X	3.155	1	2.697
				TOTAL	34.676
MUMTY/MACHINE ROOM AREA DETAIL = (X) - (Y)					
NET MUMTY/MACHINE ROOM AREA DETAIL				103.759	

TOTAL F.A.R AREA ON ALL FLOORS		
TOWER - A		
FLOOR	AREA	
1	5117.000	85.989
2	157.000	383.091
3	2ND FLOOR	380.115
4	3RD FLOOR	380.115
5	4TH FLOOR	380.115
6	5TH FLOOR	380.115
7	6TH FLOOR	380.115
8	7TH FLOOR	380.115
9	8TH FLOOR	380.115
10	9TH FLOOR	380.115
11	10TH FLOOR	380.115
12	11TH FLOOR	380.115
13	12TH FLOOR	380.115
14	13TH FLOOR	380.115
15	14TH FLOOR	380.115
16	15TH FLOOR	380.115
17	16TH FLOOR	380.115
18	17TH FLOOR	380.115
19	18TH FLOOR	380.115
20	19TH FLOOR	380.115
21	20TH FLOOR	380.115
22	21ST FLOOR	380.115
23	22ND FLOOR	380.115
TOTAL		8451.456

TOTAL AREA DETAILS FOR SERVICES F.A.R AREA FOR TOWER - A		
ITEM	FLOOR	AREA (SQ M)
1	STILT/GROUND FLOOR	35.980
2	1ST FLOOR	49.705
3	2ND FLOOR	49.609
4	3RD FLOOR	49.609
5	4TH FLOOR	49.609
6	5TH FLOOR	49.609
7	6TH FLOOR	49.609
8	7TH FLOOR	49.609
9	8TH FLOOR	49.609
10	9TH FLOOR	49.609
11	10TH FLOOR	49.609
12	11TH FLOOR	49.609
13	12TH FLOOR	49.609
14	13TH FLOOR	49.609
15	14TH FLOOR	49.609
16	15TH FLOOR	49.609
17	16TH FLOOR	49.609
18	17TH FLOOR	49.609
19	18TH FLOOR	49.609
20	19TH FLOOR	49.609
21	20TH FLOOR	49.609
22	21ST FLOOR	49.609
23	22ND FLOOR	49.609
24	TERRACE	84.056
TOTAL F.A.R		1211.140

SUBMISSION DRAWING

PROJECT:
PROPOSED PLAN FOR SPORTS CITY AT LAND PARCEL SC-02/A9, SECTOR- 150, Noida For - M/s WONDROUS BUILDSMART PVT. LTD.

DRAWING TITLE:
TOWER TYPE - A AREA CALCULATION DETAILS

For Wondrous Buildsmart Pvt. Limited
 Director/Authorised Signatory

ARCHITECT'S SIGN
 COA NO. - CA2/2018/10840

OWNER'S SIGN

SCALE

DEALT BY

DATE

DESIGN BY

CHECKED BY

DRG No

SD-06