

SITE PLAN (GROUND LVL.)

Rev. No.	Date	Revision

**Project :**  
**PROPOSED G. HOUSING COCO COUNTY**  
 AT PLOT NO: - GH3C, SECTOR -10  
 GREATER NOIDA, (U.P.)

**Title :**  
**LAYOUT PLAN**

**Subtitle :**  
**ELECTRICAL SETTING OUT PLAN**

**Drawing Released For :**

APPROVAL       RERA SUBMISSION  
 ADVANCE COPY       CONSTRUCTION

**Drg. No. :** CC / RERA / E-01

**Scale :** 1 : 300      **Drawn By :** Amit

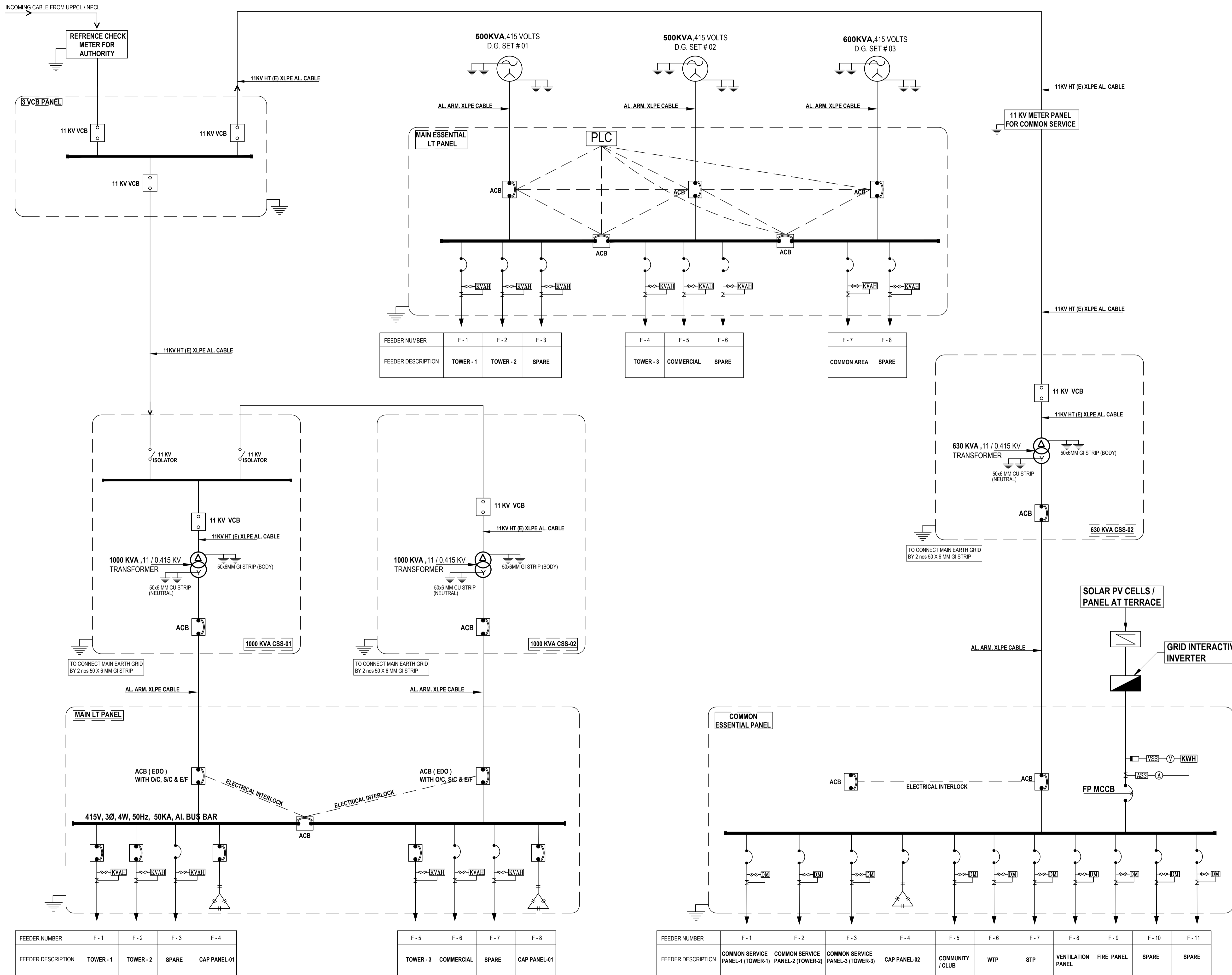
**Date :** March 2019      **Design By :** Sanjay Goel

**Ckd By :** Anand Havelia

**Architects :**

**Confluence**  
 B-421, NFC, N.D-65, INDIA  
 Ph- +91-11-29216006, 40564768 (www.inconfluence.com)

**Services Consultant :**  
**Consummate Engineering Services (P) Ltd.**  
 Noida Office : B - 67, Sector - 67, Noida - 201 301  
 Tel : (0120) 2303500 (24 Lines)  
 Lko. Office : R 006, Rohtas Pliumeria, Gomti Nagar, Lucknow  
 e mail : mail@cespi.in, website : www.cespi.in



LEGENDS	
SYMBOLS	DESCRIPTION
	VCB (VACUUM CIRCUIT BREAKER)
	INCOMING CIRCUIT BREAKER WITH INTERLOCKING
	OUTGOING CIRCUIT BREAKER
	POTENTIAL TRANSFORMER
	CURRENT TRANSFORMER
	DUAL ENERGY METER
	CAPACITOR
	ON LOAD CHANGE OVER SWITCH

rev. no.	date	revision
..	..	..

project  
**PROPOSED GROUP HOUSING FOR (COCO COUNTY)**  
 SHIRJA REAL ESTATE SOLUTIONS PVT.LTD. AT PLOT NO: - GH3C,SECTOR -10 GREATER NOIDA,(U.P.)

title  
**ELECTRICAL DRAWING**

subtitle  
**SITE PLAN**

drawing released for  
 APPROVAL  RERA SUBMISSION  
 ADVANCE COPY  CONSTRUCTION

drg. no. CC / ELEC / EXT.J 02 drawn by Najmul  
 scale N.T.S designed by Ateeq Ur Rehman  
 date Nov. 2018 checked by Anand Havella

architects  
 B- 421, NFC, N.D-65,INDIA  
 Ph. +91-11-29216006, Ph. +91-11-40564768  
 ccs@inconfuence.com, www.inconfuence.com

services consultant  
**Consummate Engineering Services (P) Ltd.**  
 Noida Office : B - 67, Sector - 67, Noida - 201 301  
 Tel : (0120) 6943500 ( 24 Lines )  
 Lko. Office : R 006, Rohtas Plumeria, Gomti Nagar, Lucknow  
 e mail : mail@cespl.in, website : www.cespl.in