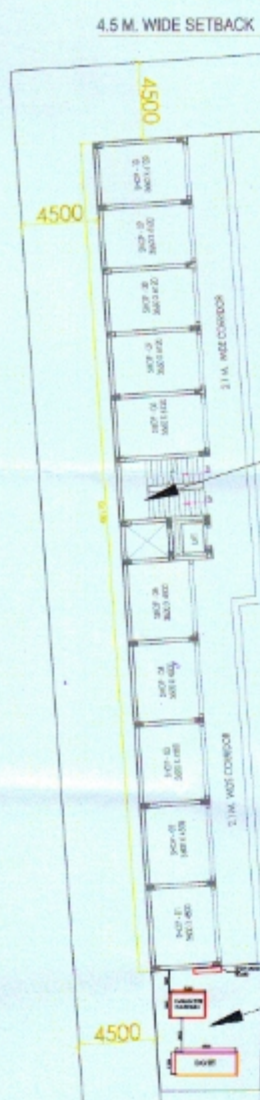


BABATPUR ROAD

24.0M WIDE PANCHKOSI ROAD



**COMMERCIAL
SHREE SAI CITY
PHASE - 3**

**SPACE FOR
SUB-STATION
D.G SET 100 KVA**

Shree Sai Baba Infraprojects Pvt. Ltd.

Director

Nishant Shekhar
**NISHANT SHEKHAR
CA/2006/39203**



LEGEND:-		
SYMBOL	DESCRIPTION	LEVEL (WRT F.F.L)
	SA UPS OUTLET WITH SWITCHBOARD FOR WIFI	AT 700MM
	2 WAY SWITCH	AT 1200MM
	SWITCH BOARD / NO. OF SWITCHES	AT 1200MM
	WALL LIGHT FIXTURE	AT 2400MM
	CEILING LIGHT	AT CEILING
	CHANDELIER	AT CEILING
	CEILING FAN	AT CEILING
	MIRROR WALL MOUNTED FL. FIXTURE	AT 1950 MM
	EXHAUST FAN SWITCH	
	SA CHIMNEY SWITCH WITH SOCKET	AT 1600
	SA SWITCH WITH SOCKET	AT 1200 MM BEDSIDE, SOFASIDE UNITS; 700 MM
	1.5A SWITCH WITH SOCKET	AT 300 MM AT 1200 MM FOR KITCHEN
	1.5A GEYSER SWITCH WITH SOCKET	AT 1500
	20/25A AC POINT	AT 1200 MM
	T.V. POINT	AT 450 MM / 1200 MM
	ONT BOX FOR ELV SYSTEM	INBUILT IN LPDB
	25MM CONDUIT FOR LV	
	40MM CONDUIT FOR SUB MAIN	
	DISTRIBUTION BOARD	AT 1500MM bottom of box
	DOOR BELL	+1200 MM
	BELL BUZZER	AT 1950MM
	FAN REGULATOR	+1200 MM
	DATA POINT	AS ELEVATION
	RO POINT	+1500 MM
	EMERGENCY LIGHT POINT	

DES ARC
ARCHITECTS, INTERIORS, PLANNING
UG SR 1A, ANSAL PLAZA, SEC - 1, VAISHALI, GZB
PH: 0120 - 4253114 M : 0-9818711273
EMAIL- desarc14@gmail.com

PROJECT :
PROPOSED AFFORDABLE HOUSING " SAI CITY "
UNDER " P . M . A . Y " , AT DASEPUR , VARANASI
FOR M/S : SHREE SAI BABA INFRA PROJECTS PVT. LTD.

DRAWING TITLE
PHASE - 03

DRAWING TYPE
**SITE PLAN
(ELECTRICAL)**
DRG. NO.
PMAY - 01/01