

MAHAGUN MEADOWS

SHIG-II : 4BHK+TERRACE

Carpet Area = 1916.35 sq. ft.

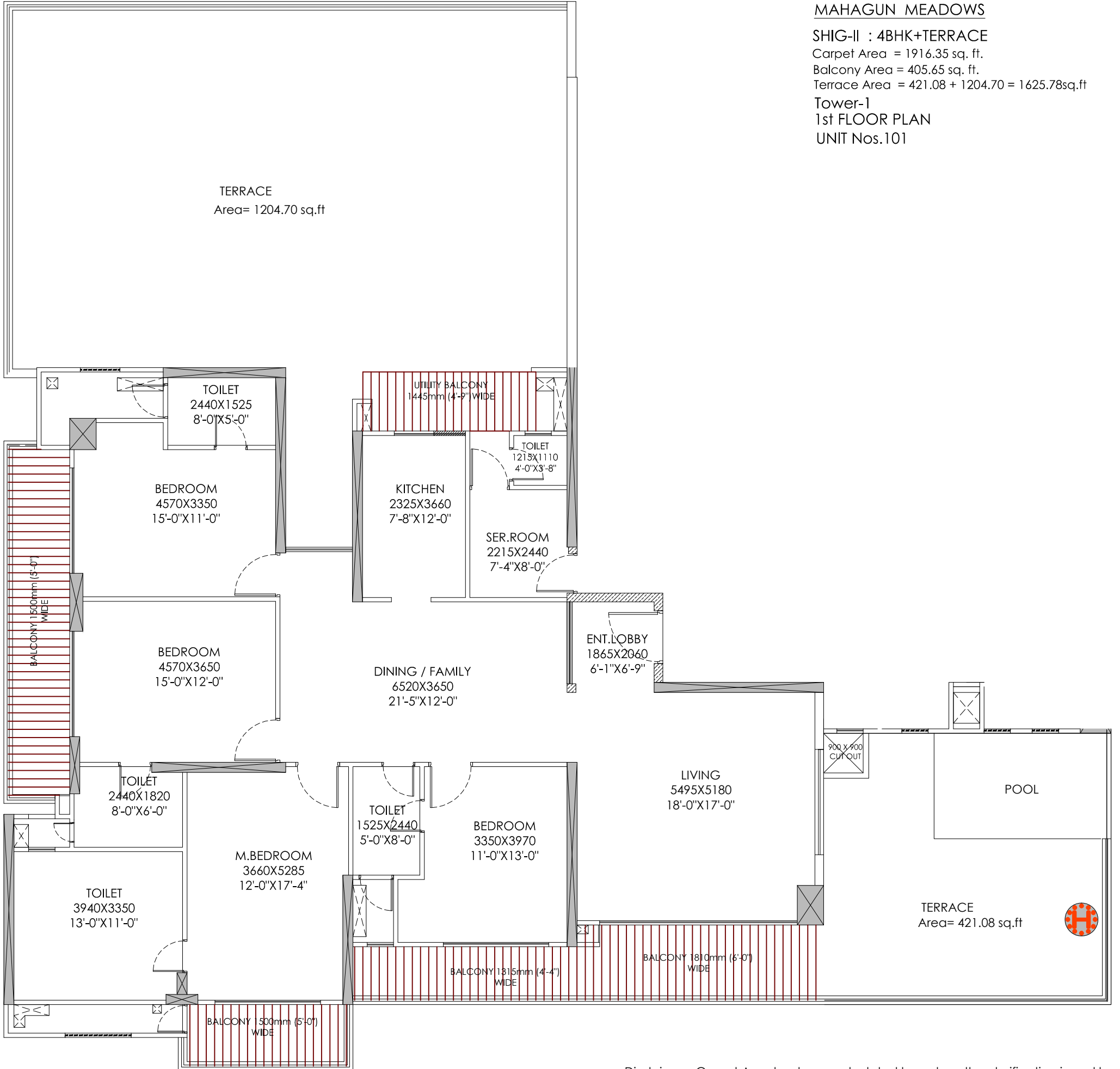
Balcony Area = 405.65 sq. ft.

Terrace Area = 421.08 + 1204.70 = 1625.78sq.ft

Tower-1

1st FLOOR PLAN

UNIT Nos.101



Disclaimer:- Carpet Area has been calculated based on the clarification issued by Maharera via- MAHARERA/SECY/FILE No: -27/84/2017 Dated:-14 june 2017