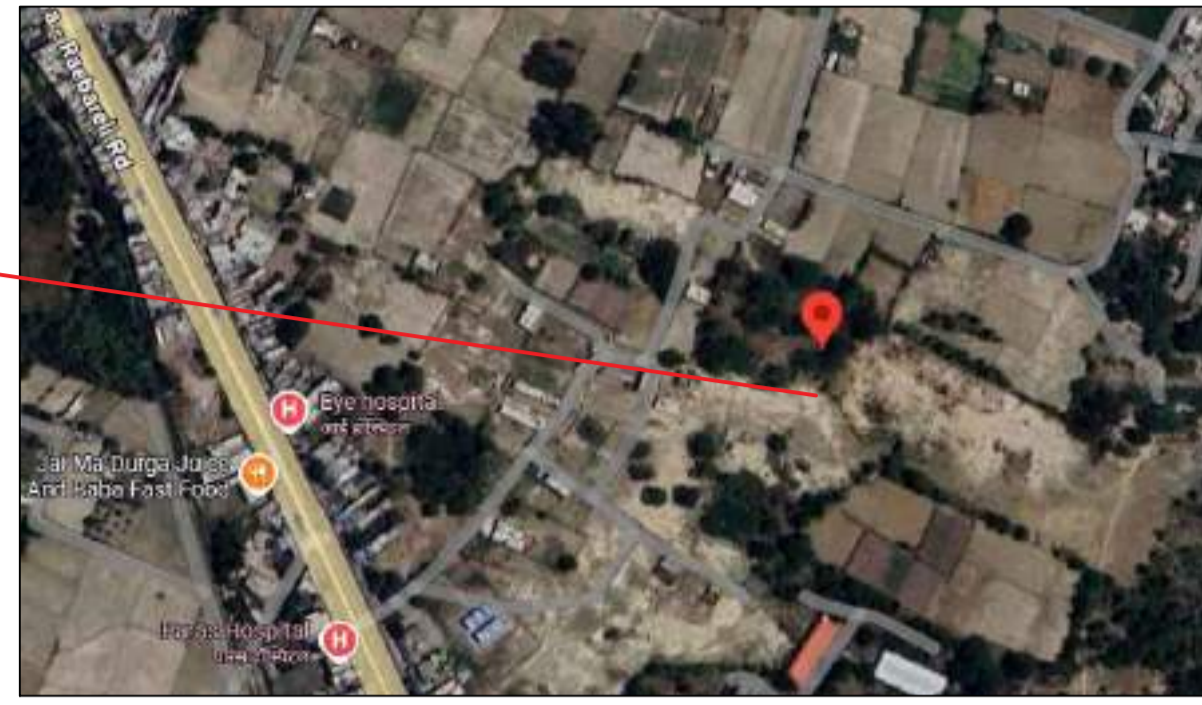
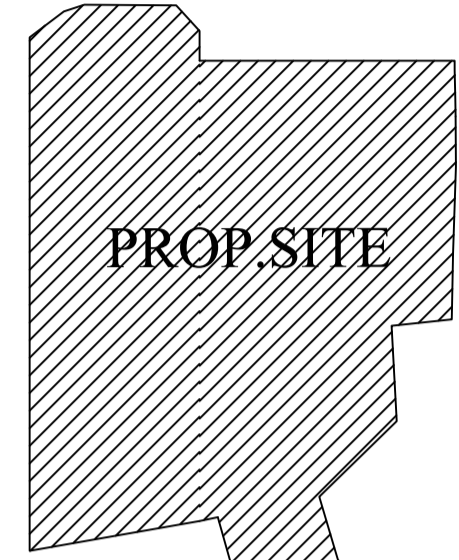


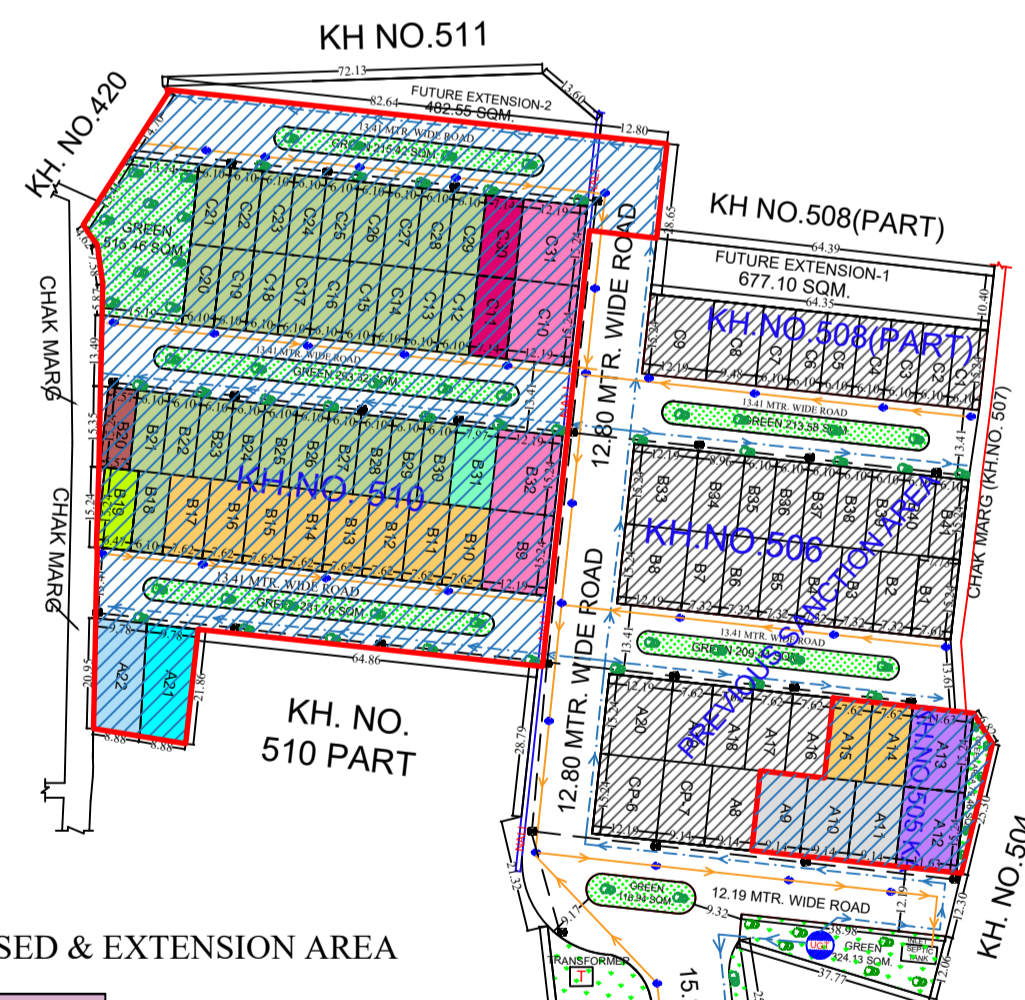
PROPOSED SITE



GEO LOCATION
LAT.- 26.557047213630483,
LONG.- 81.04674071370135



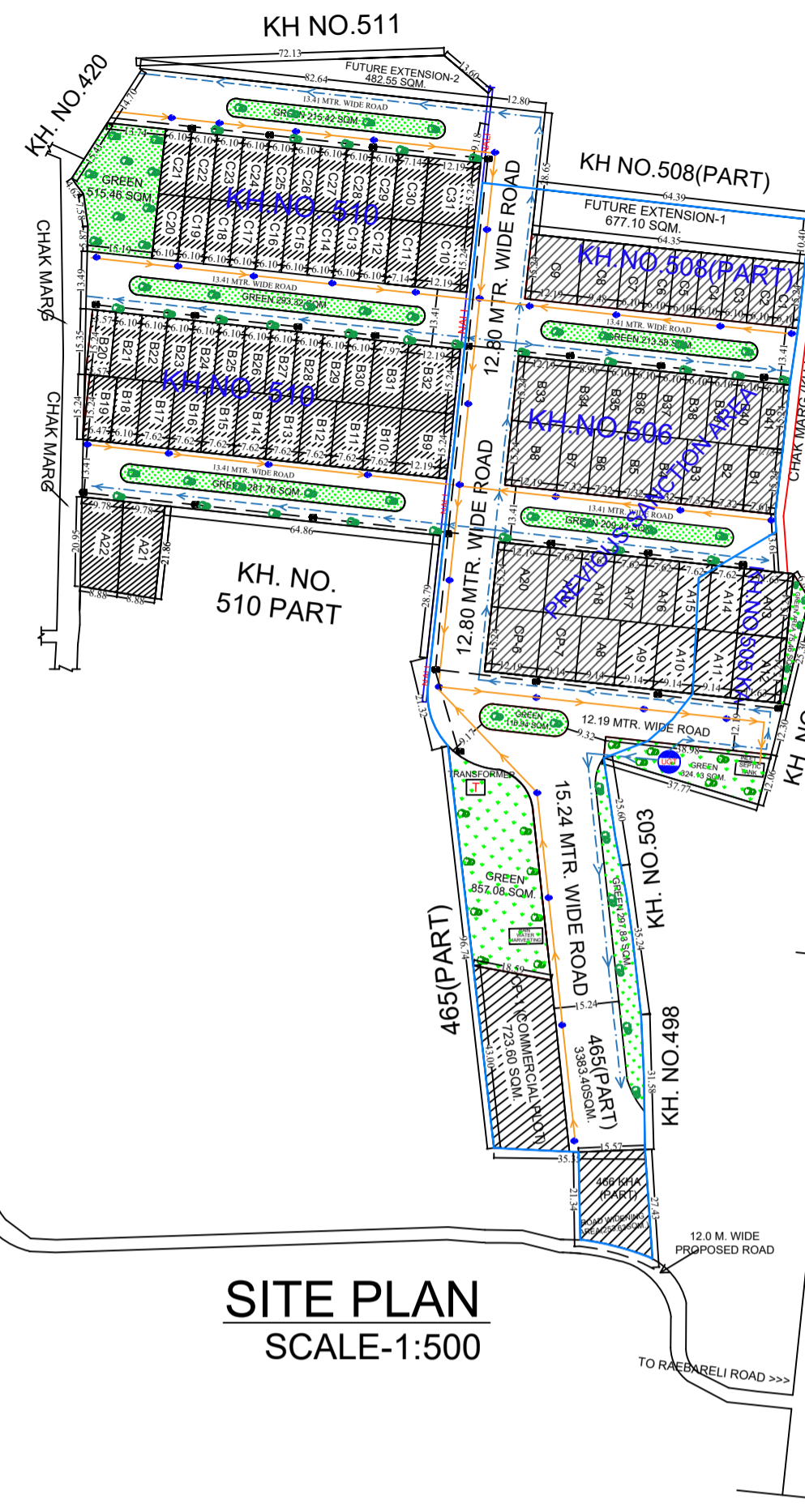
KEY PLAN
(SCALE -1:1000)



SHOWN THUS PRESENT REVISED & EXTENSION AREA

PRESENT REVISED & EXTENSION AREA			
S.NO.	KHASRA NO.	AREA (SQMT.)	VILLAGE
1.	505 KA	1070.00 SQMT.	BAIRISALPUR
2.	510 (PART)	8225.00 SQMT.	BAIRISALPUR
TOTAL AREA - 9295.00 SQMT.			

LAYOUT PLAN
SCALE (1:500)

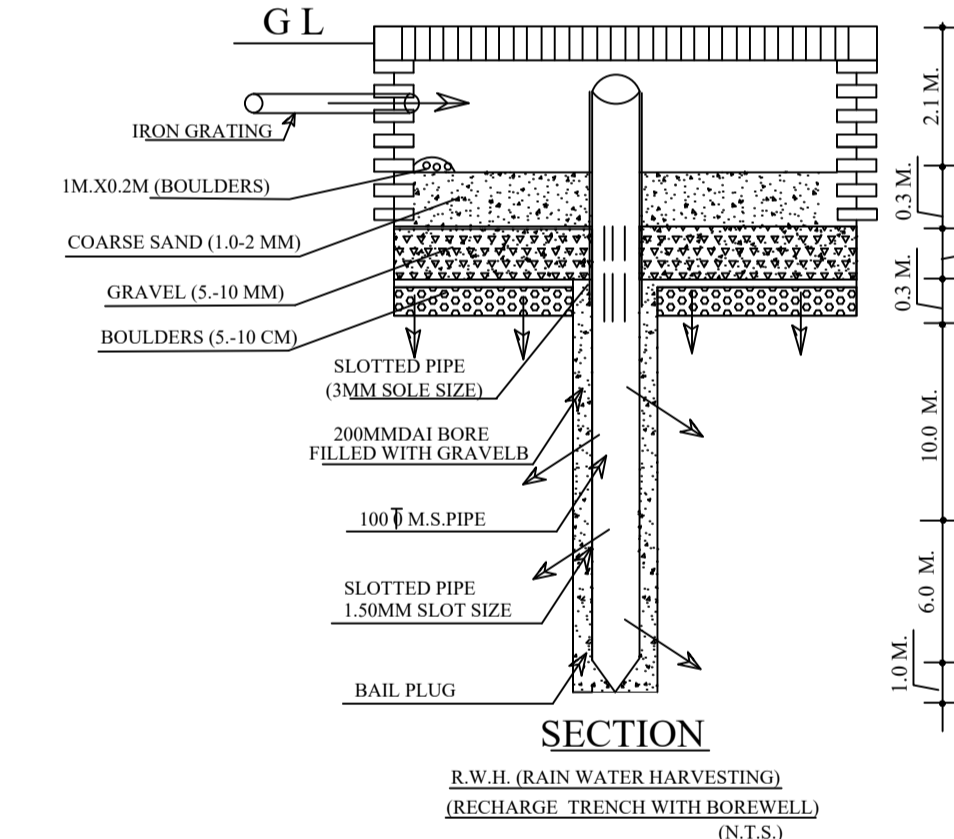
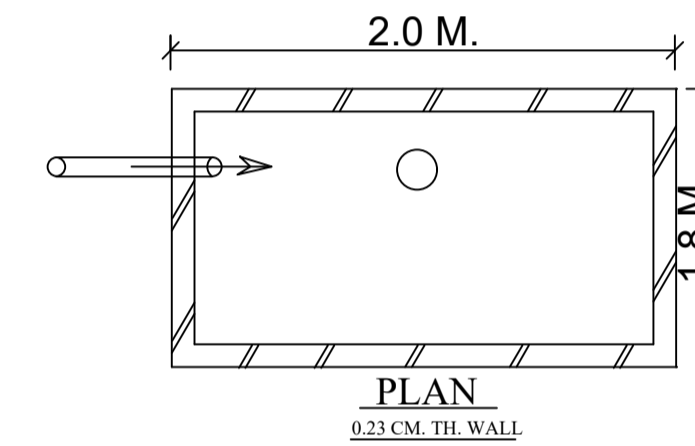


SITE PLAN
SCALE-1:500



SAJRA SUPER IMPOSED PLAN
SCALE - (1:500)

S/NO	PLOT NO.	NO.OF PLOT	SIZE	AREA (SQM.)	TOTAL AREA (SQM.)	COLOR CODE
1-	A8,A9,A10,A11	4	9.14 X 15.24	139.35 SQM.	557.40 SQM.	
2-	A12,A13	2	11.63 X 15.24	177.24 SQM.	354.48 SQM.	
3-	A14,A15,A16,A17, A18,A19,B10,B11, B12,B13,B14,B15, B16,B17	14	7.62 X 15.24	116.13 SQM.	1625.82 SQM.	
4-	A20,B8,B9,B32,B33, C9,C10,C31	8	12.19 X 15.24	185.81 SQM.	1486.48 SQM.	
5-	A21	1	-	201.39 SQM.	201.39 SQM.	
6-	A22	1	-	196.53 SQM.	196.53 SQM.	
7-	B1	1	-	116.97 SQM.	116.97 SQM.	
8-	B2,B3,B4,B5,B6,B7	6	7.32 X 15.24	111.48 SQM.	668.88 SQM.	
9-	B18,B21,B22,B23, B24,B25,B26,B27, B28,B29,B30,B35, B36,B37,B38,B39, B40,B41,C1,C2,C3, C4,C5,C6,C7,C12, C13,C14,C15,C16, C17,C18,C19,C20, C21,C22,C23,C24, C25,C26,C27,C28, C29	43	6.10 X 15.24	92.90 SQM.	3994.70 SQM.	
10-	B19	1	6.47 X 15.24	98.60 SQM.	98.60 SQM.	
11-	B20	1	5.57 X 15.24	84.88 SQM.	84.88 SQM.	
12-	B31	1	7.97 X 15.24	121.46 SQM.	121.46 SQM.	
13-	B34	1	8.96 X 15.24	136.55 SQM.	136.55 SQM.	
14-	C8	1	9.48 X 15.24	144.47 SQM.	144.47 SQM.	
15-	C11,C30	2	7.14 X 15.24	108.82 SQM.	217.64 SQM.	
16-	CP-1 (COMMERCIAL PLOT)	1	-	723.60 SQM.	723.60 SQM.	
17-	CP-6 (COMMERCIAL PLOT)	1	12.19 X 15.24	185.81 SQM.	185.81 SQM.	
18-	CP-7 (COMMERCIAL PLOT)	1	9.14 X 15.24	139.35 SQM.	139.35 SQM.	
TOTAL PLOT				90	11055.01 SQM.	



SAJRA PLAN

PROJECT TITLE :- VEDIC VILLAGE PHASE-1 EXTENSION
PROPOSED ,REVISED & EXTENSION LAYOUT PLAN OF
M/S ANUSHNAN BUILDERS AND DEVELOPERS PVT. LTD.
SITUATED AT BAIRISALPUR, NIGOHA.
DISTRICT- LUCKNOW.
DIRECTOR- MR. ARUN PRATAP SINGH S/O
SHREE ASHOK SINGH

AREA STATEMENT:-

1-	TOTAL LAND AREA - 22032.03 SQMT.
2-	FUTURE EXTENSION-1 AREA = 677.10 SQMT. FUTURE EXTENSION-2 AREA = 482.55 SQMT. TOTAL FUTURE EXTENSION AREA (1+2) = (1159.65 SQMT.)
3-	ROAD WIDENING AREA - 253.63 SQMT.
4-	NET LAND AREA FOR PROJECT- 20618.75 SQMT.
5-	TOTAL PLOTTED AREA - 11055.01 SQMT. (53.62 %)
6-	TOTAL ROAD AREA - 6163.32 SQMT. (29.89 %)
7-	TOTAL GREEN AREA - 3400.42 SQMT. (16.49%)

PREVIOUS SANCTION AREA

S.NO.	KHASRA NO.	AREA (SQMT.)	VILLAGE
1.	465(PART)	1603.40 SQMT.	BAIRISALPUR
2.	465(PART)	1780.00 SQMT.	BAIRISALPUR
3.	506	7800.00 SQMT.	BAIRISALPUR
4.	508(PART)	1300.00 SQMT.	BAIRISALPUR
5.	466KHA (PART)	253.63 SQMT.	BAIRISALPUR
TOTAL AREA - 12737.03 SQM.			

PRESENT REVISED & EXTENSION AREA

S.NO.	KHASRA NO.	AREA (SQMT.)	VILLAGE
1.	465(PART)	1603.40 SQMT.	BAIRISALPUR
2.	465(PART)	1780.00 SQMT.	BAIRISALPUR
3.	506	7800.00 SQMT.	BAIRISALPUR
4.	508(PART)	1300.00 SQMT.	BAIRISALPUR
5.	466KHA (PART)	253.63 SQMT.	BAIRISALPUR
6.	505 KA	1070.00 SQMT.	BAIRISALPUR
7.	510 (PART)	8225.00 SQMT.	BAIRISALPUR
TOTAL AREA - 22032.03 SQM. (2.203203 HECT.)			

BOUNDARY WALL LENGTH- 912.39 RUM.
BOUNDARY WALL HEIGHT- 2.1 MTR.

TREE CALCULATIONS-
50 TREES REQUIRED/HECTARE
TREES REQUIRED TO BE PLANTED - 50 X 2.203203 =110.16 NO.
TREES REQUIRED TO BE PLANTED - 111 TREES

LEGENDS OF DRAINAGE-

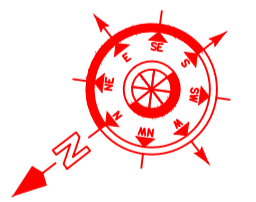
- WATER LINE - 50 DIA
- SEWER LINE - 300/200/150
- ELECTRICAL POLE - 9.0 MT.R.C.C. ROAD - BITUMINOUS ROAD
- TRANSFORMER
- NO. OF TREES - 111
- NP. MAIN HOLE
- UGT UNDER GROUND TANK
- SHOWN THIS PREVIOUS SANCTION AREA

TITLE : SUBMISSION PLAN

NOTE:-
THIS MAP HAS BEEN PREPARED AS PER
JILA PANCHAYAT BY LAWS 3315/21A-06/2021-22
DATED- 28/10/2025

OWNER SIGN :

NORTH



ARCHITECT / ENGINEER SIGN.

PROJECT TITLE :- VEDIC VILLAGE PHASE-1 EXTENSION
PROPOSED ,REVISED & EXTENSION LAYOUT PLAN OF
M/S ANUSHNAN BUILDERS AND DEVELOPERS PVT. LTD.
SITUATED AT BAIRISALPUR, NIGOHA.
DISTRICT- LUCKNOW.
DIRECTOR- MR. ARUN PRATAP SINGH S/O
SHREE ASHOK SINGH

AREA STATEMENT:-

1-	TOTAL LAND AREA - 22032.03 SQMT.
2-	FUTURE EXTENSION-1 AREA = 677.10 SQMT. FUTURE EXTENSION-2 AREA = 482.55 SQMT. TOTAL FUTURE EXTENSION AREA (1+2) = (1159.65 SQMT.)
3-	ROAD WIDENING AREA - 253.63 SQMT.
4-	NET LAND AREA FOR PROJECT- 20618.75 SQMT.
5-	TOTAL PLOTTED AREA - 11055.01 SQMT. (53.62 %)
6-	TOTAL ROAD AREA - 6163.32 SQMT. (29.89 %)
7-	TOTAL GREEN AREA - 3400.42 SQMT. (16.49%)

PREVIOUS SANCTION AREA

S.NO.	KHASRA NO.	AREA (SQMT.)	VILLAGE
1.	465(PART)	1603.40 SQMT.	BAIRISALPUR
2.	465(PART)	1780.00 SQMT.	BAIRISALPUR
3.	506	7800.00 SQMT.	BAIRISALPUR
4.	508(PART)	1300.00 SQMT.	BAIRISALPUR
5.	466KHA (PART)	253.63 SQMT.	BAIRISALPUR

TOTAL AREA - 12737.03 SQMT.

PRESENT REVISED & EXTENSION AREA

S.NO.	KHASRA NO.	AREA (SQMT.)	VILLAGE
1.	465(PART)	1603.40 SQMT.	BAIRISALPUR
2.	465(PART)	1780.00 SQMT.	BAIRISALPUR
3.	506	7800.00 SQMT.	BAIRISALPUR
4.	508(PART)	1300.00 SQMT.	BAIRISALPUR
5.	466KHA (PART)	253.63 SQMT.	BAIRISALPUR
6.	505 KA	1070.00 SQMT.	BAIRISALPUR
7.	510 (PART)	8225.00 SQMT.	BAIRISALPUR

TOTAL AREA - 22032.03 SQMT. (2.203203 HECT.)

BOUNDARY WALL LENGTH- 912.39 RUM.
BOUNDARY WALL HEIGHT- 2.1 MTR.

TREE CALCULATIONS-
 50 TREES REQUIRED/HECTARE
 TREES REQUIRED TO BE PLANTED - 50 X 2.203203 =110.16 NO.
 TREES REQUIRED TO BE PLANTED - 111 TREES

LEGENDS OF DRAINAGE-

- WATER LINE - 50/30 DIA
- SEWER LINE - 300/200/150
- ELECTRICAL POLE - 9.0 MT.R.C.C. ROAD - BITUMINOUS ROAD
- TRANSFORMER
- NO. OF TREES - 111
- NP. MAIN HOLE
- UGT UNDER GROUND TANK
- SHOWN THIS PREVIOUS SANCTION AREA

TITLE : SUBMISSION PLAN

NOTE:-
 THIS MAP HAS BEEN PREPARED AS PER
 JILA PANCHAYAT BY LAWS 3315/21A-06/2021-22
 DATED- 28/10/2025

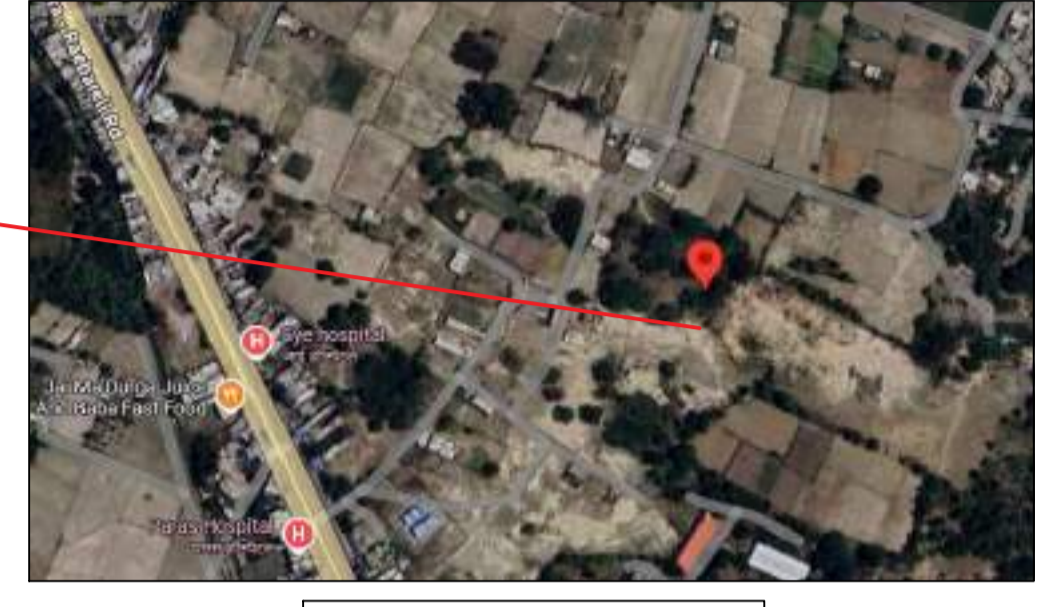
OWNER SIGN :

NORTH

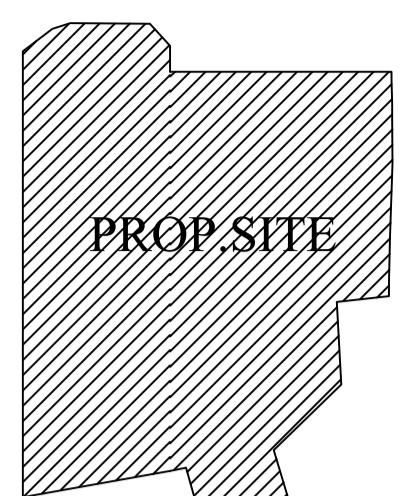


ARCHITECT / ENGINEER SIGN.

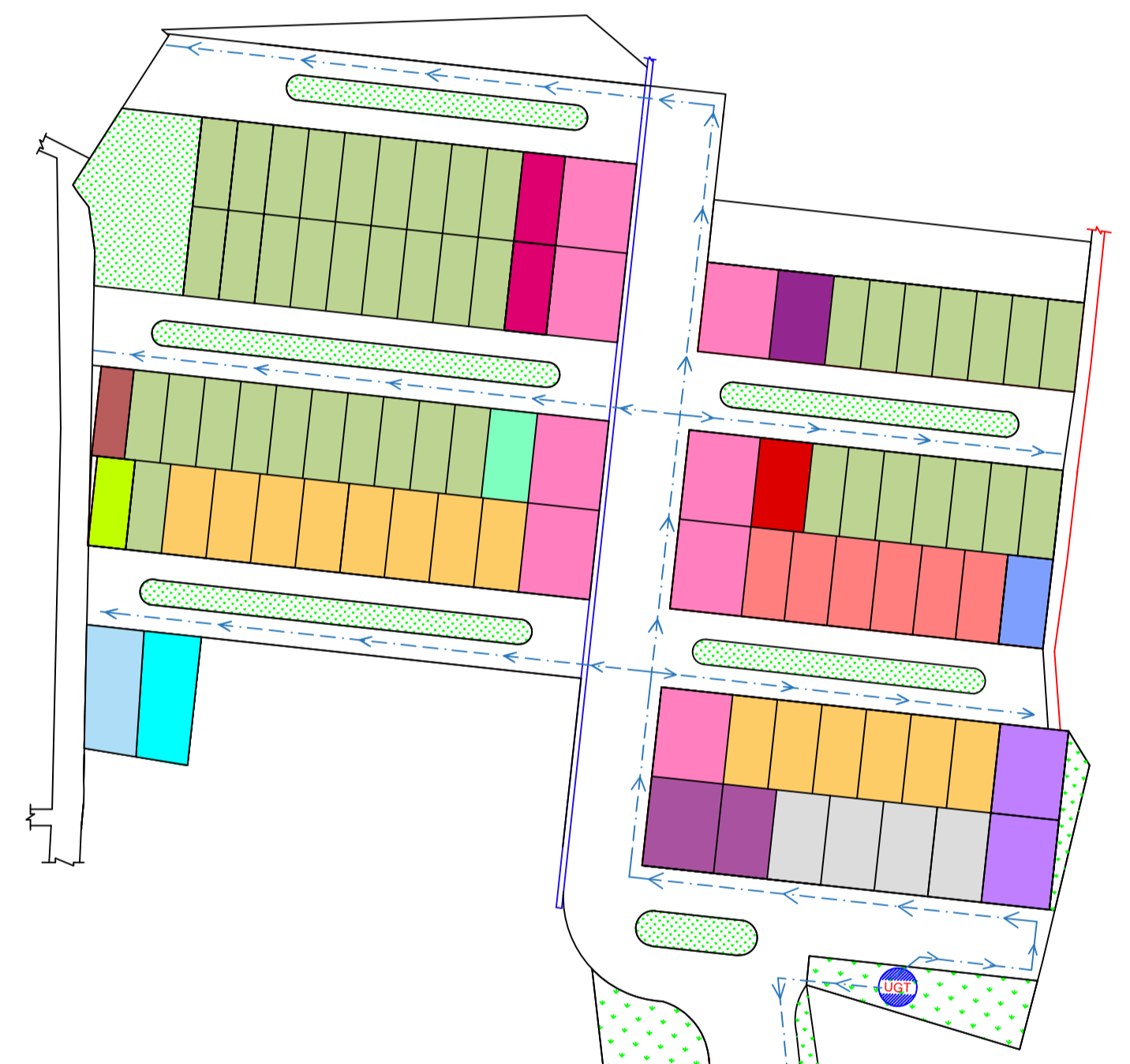
PROPOSED SITE



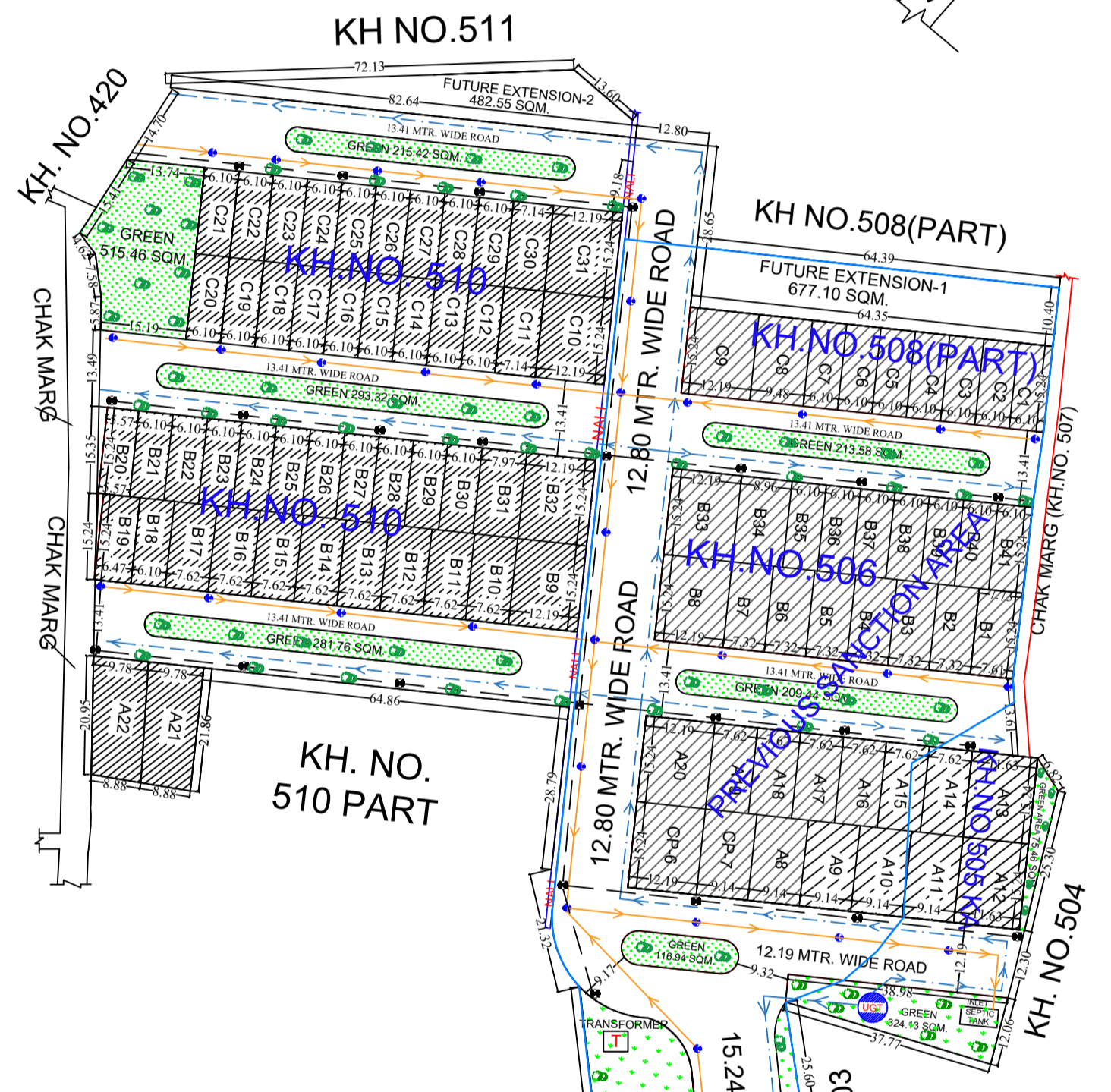
GEO LOCATION
 LAT.- 26.557047213630483,
 LONG.- 81.04674071370135



KEY PLAN
 (SCALE -1:1000)

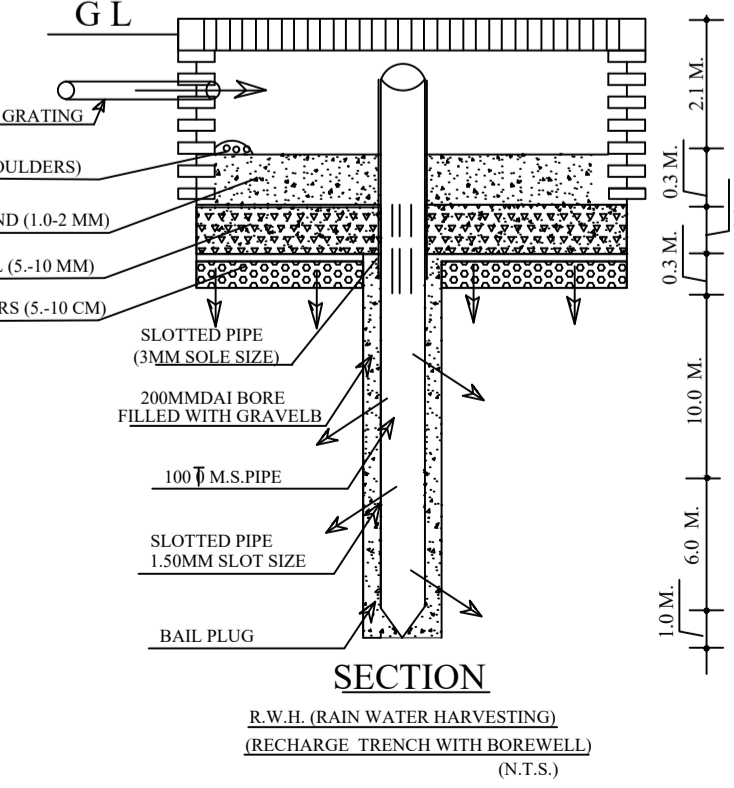
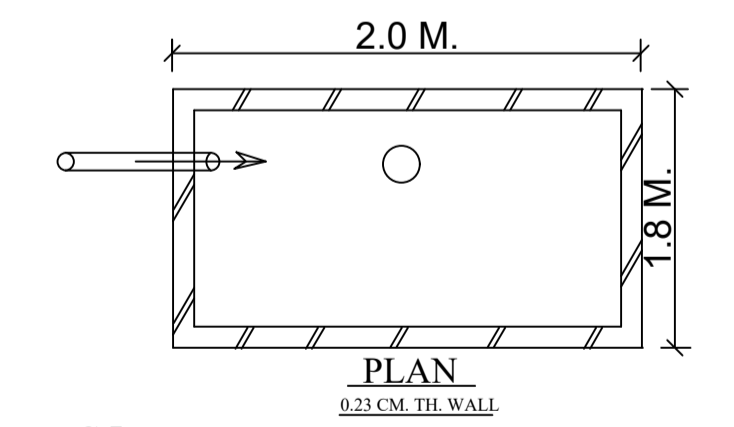


WATER SUPPLY PLAN
 SCALE (1:500)



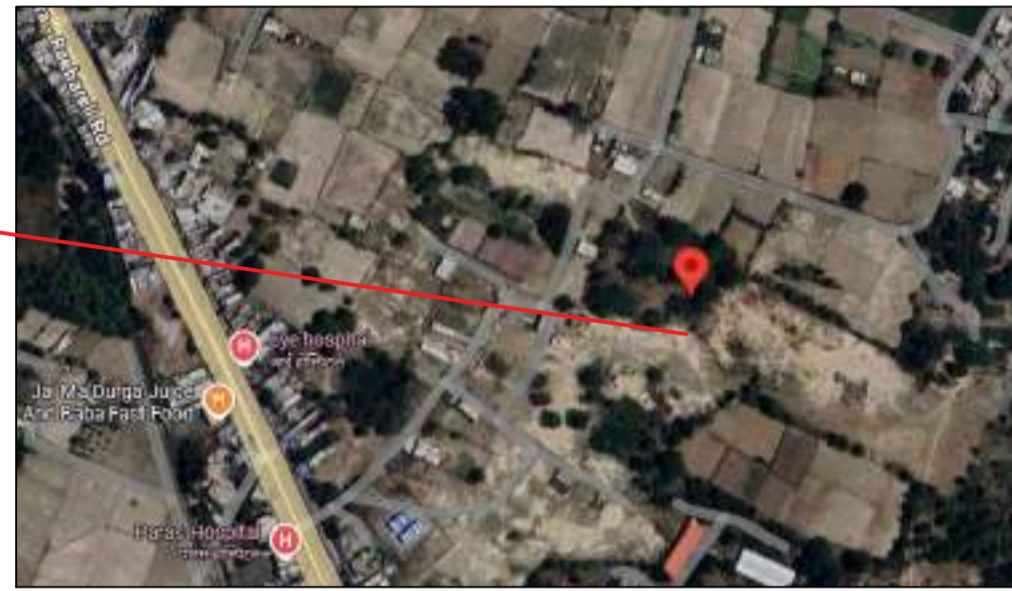
SITE PLAN
 SCALE-1:500

S/NO	PLOT NO.	NO.OF PLOT	SIZE	AREA (SQM.)	TOTAL AREA (SQM.)	COLOUR CODE
1-	A8,A9,A10,A11	4	9.14 X 15.24	139.35 SQM.	557.40 SQM.	
2-	A12,A13	2	11.63 X 15.24	177.24 SQM.	354.48 SQM.	
3-	A14,A15,A16,A17, A18,A19,B10,B11, B12,B13,B14,B15, B16,B17	14	7.62 X 15.24	116.13 SQM.	1625.82 SQM.	
4-	A20,B8,B9,B32,B33, C9,C10,C31	8	12.19 X 15.24	185.81 SQM.	1486.48 SQM.	
5-	A21	1	-	201.39 SQM.	201.39 SQM.	
6-	A22	1	-	196.53 SQM.	196.53 SQM.	
7-	B1	1	-	116.97 SQM.	116.97 SQM.	
8-	B2,B3,B4,B5,B6,B7	6	7.32 X 15.24	111.48 SQM.	668.88 SQM.	
9-	B18,B21,B22,B23, B24,B25,B26,B27, B28,B29,B30,B35, B36,B37,B38,B39, B40,B41,C1,C2,C3, C4,C5,C6,C7,C12, C13,C14,C15,C16, C17,C18,C19,C20, C21,C22,C23,C24, C25,C26,C27,C28, C29	43	6.10 X 15.24	92.90 SQM.	3994.70 SQM.	
10-	B19	1	6.47 X 15.24	98.60 SQM.	98.60 SQM.	
11-	B20	1	5.57 X 15.24	84.88 SQM.	84.88 SQM.	
12-	B31	1	7.97 X 15.24	121.46 SQM.	121.46 SQM.	
13-	B34	1	8.96 X 15.24	136.55 SQM.	136.55 SQM.	
14-	C8	1	9.48 X 15.24	144.47 SQM.	144.47 SQM.	
15-	C11,C30	2	7.14 X 15.24	108.82 SQM.	217.64 SQM.	
16-	CP-1 (COMMERCIAL PLOT)	1	-	723.60 SQM.	723.60 SQM.	
17-	CP-6 (COMMERCIAL PLOT)	1	12.19 X 15.24	185.81 SQM.	185.81 SQM.	
18-	CP-7 (COMMERCIAL PLOT)	1	9.14 X 15.24	139.35 SQM.	139.35 SQM.	
TOTAL PLOT				90	11055.01 SQM.	

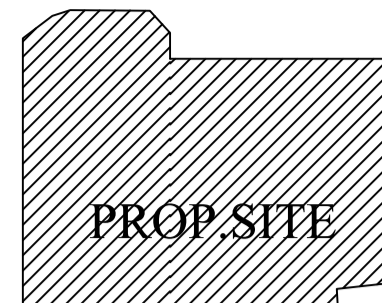


R.W.H. (RAIN WATER HARVESTING) (RECHARGE TRENCH WITH BOREWELL) (N.T.S.)

PROPOSED SITE



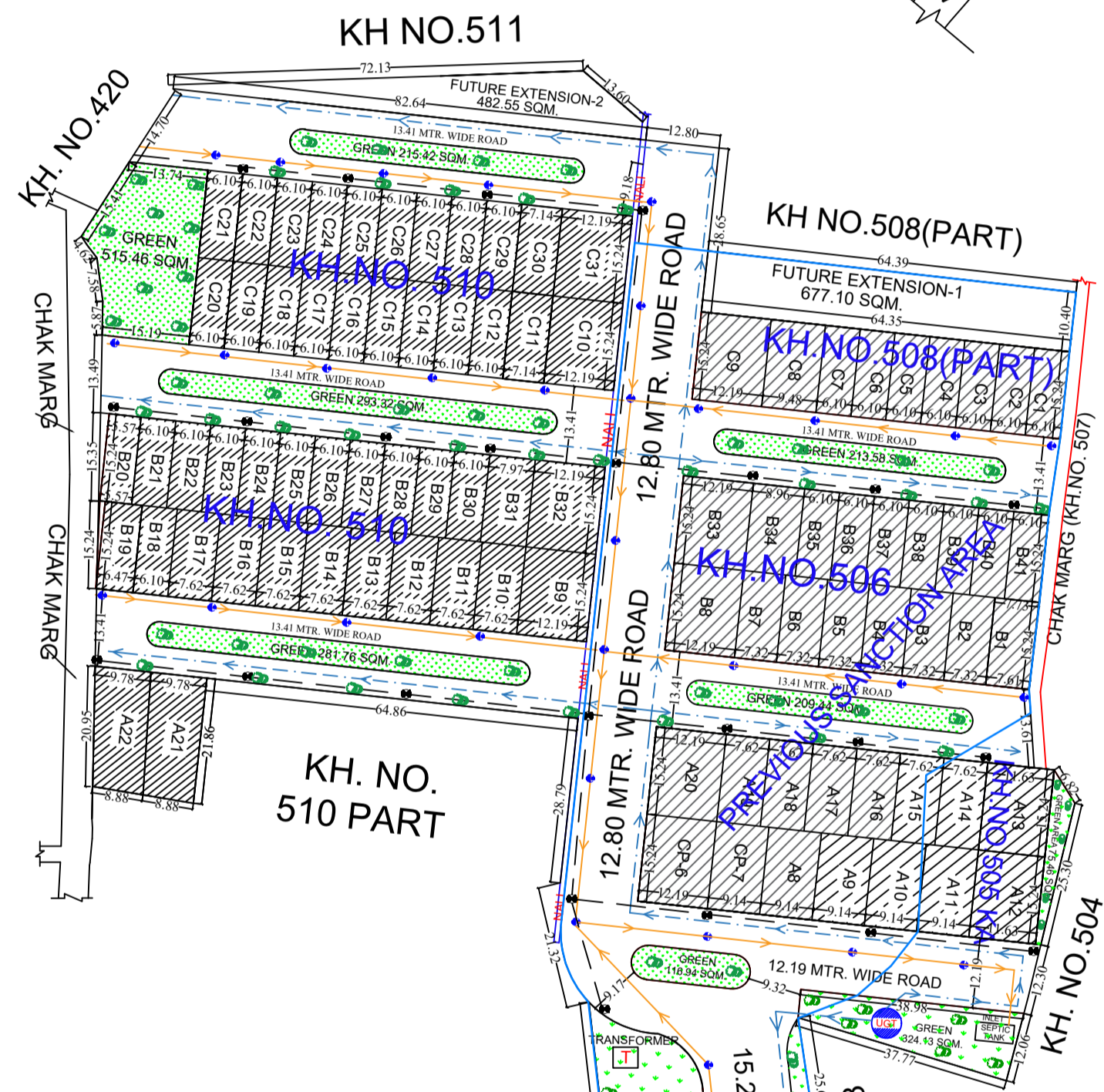
GEO LOCATION
LAT.- 26.557047213630483,
LONG.- 81.04674071370135



KEY PLAN
(SCALE -1:1000)

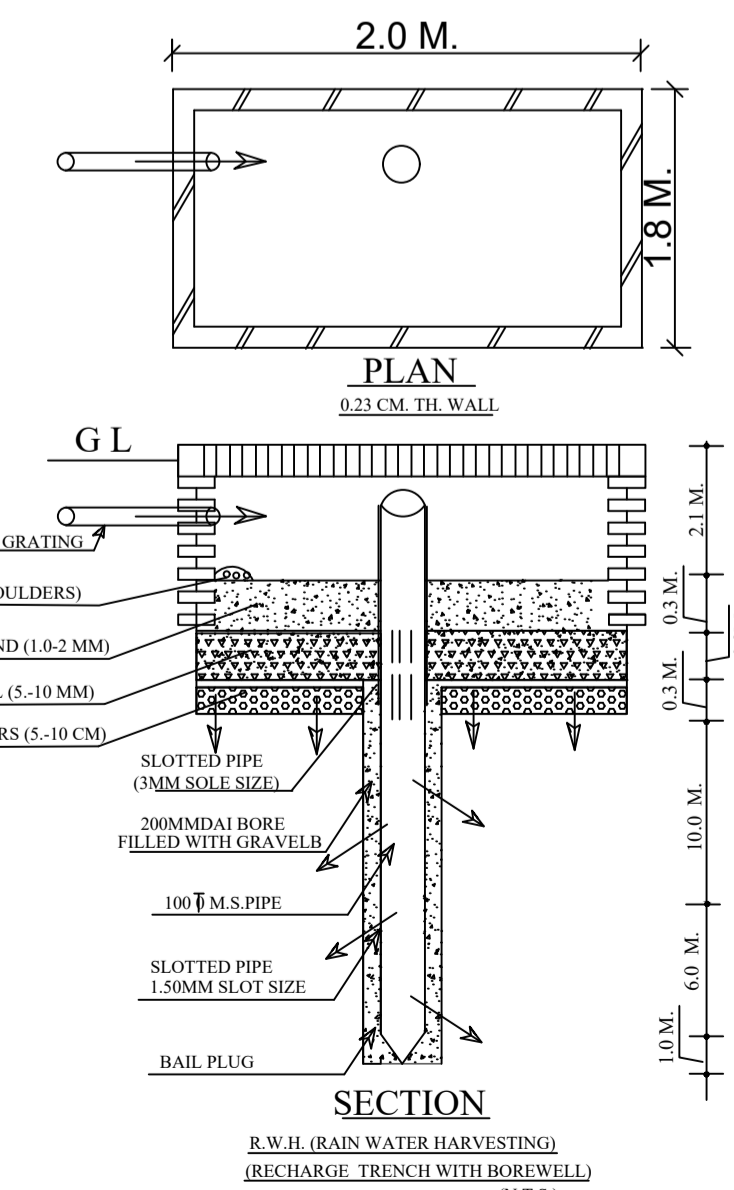


ELECTRICITY SUPPLY PLAN
SCALE (1:500)



SITE PLAN
SCALE-1:500

S.NO	PLOT NO.	NO.OF PLOT	SIZE	AREA (SQM.)	TOTAL AREA (SQM.)	COLOUR CODE
1-	A8,A9,A10,A11	4	9.14 X 15.24	139.35 SQM.	557.40 SQM.	[Color]
2-	A12,A13	2	11.63 X 15.24	177.24 SQM.	354.48 SQM.	[Color]
3-	A14,A15,A16,A17, A18,A19,B10,B11, B12,B13,B14,B15, B16,B17	14	7.62 X 15.24	116.13 SQM.	1625.82 SQM.	[Color]
4-	A20,B8,B9,B32,B33, C9,C10,C31	8	12.19 X 15.24	185.81 SQM.	1486.48 SQM.	[Color]
5-	A21	1	-	201.39 SQM.	201.39 SQM.	[Color]
6-	A22	1	-	196.53 SQM.	196.53 SQM.	[Color]
7-	B1	1	-	116.97 SQM.	116.97 SQM.	[Color]
8-	B2,B3,B4,B5,B6,B7	6	7.32 X 15.24	111.48 SQM.	668.88 SQM.	[Color]
9-	B18,B21,B22,B23, B24,B25,B26,B27, B28,B29,B30,B35, B36,B37,B38,B39, B40,B41,C1,C2,C3, C4,C5,C6,C7,C12, C13,C14,C15,C16, C17,C18,C19,C20, C21,C22,C23,C24, C25,C26,C27,C28, C29	43	6.10 X 15.24	92.90 SQM.	3994.70 SQM.	[Color]
10-	B19	1	6.47 X 15.24	98.60 SQM.	98.60 SQM.	[Color]
11-	B20	1	5.57 X 15.24	84.88 SQM.	84.88 SQM.	[Color]
12-	B31	1	7.97 X 15.24	121.46 SQM.	121.46 SQM.	[Color]
13-	B34	1	8.96 X 15.24	136.55 SQM.	136.55 SQM.	[Color]
14-	C8	1	9.48 X 15.24	144.47 SQM.	144.47 SQM.	[Color]
15-	C11,C30	2	7.14 X 15.24	108.82 SQM.	217.64 SQM.	[Color]
16-	CP-1 (COMMERCIAL PLOT)	1	-	723.60 SQM.	723.60 SQM.	[Color]
17-	CP-6 (COMMERCIAL PLOT)	1	12.19 X 15.24	185.81 SQM.	185.81 SQM.	[Color]
18-	CP-7 (COMMERCIAL PLOT)	1	9.14 X 15.24	139.35 SQM.	139.35 SQM.	[Color]
TOTAL PLOT				90	11055.01 SQM.	



R.W.H. (RAIN WATER HARVESTING) (RECHARGE TRENCH WITH BOREWELL) (N.T.S.)

PROJECT TITLE :- VEDIC VILLAGE PHASE-1 EXTENSION
PROPOSED ,REVISED & EXTENSION LAYOUT PLAN OF
M/S ANUSHNAN BUILDERS AND DEVELOPERS PVT. LTD.
SITUATED AT BAIRISALPUR, NIGOHA.
DISTRICT- LUCKNOW.
DIRECTOR- MR. ARUN PRATAP SINGH S/O
SHREE ASHOK SINGH

AREA STATEMENT:-

1-	TOTAL LAND AREA - 22032.03 SQMT.
2-	FUTURE EXTENSION-1 AREA = 677.10 SQMT. FUTURE EXTENSION-2 AREA = 482.55 SQMT. TOTAL FUTURE EXTENSION AREA (1+2) = (1159.65 SQMT.)
3-	ROAD WIDENING AREA - 253.63 SQMT.
4-	NET LAND AREA FOR PROJECT- 20618.75 SQMT.
5-	TOTAL PLOTTED AREA - 11055.01 SQMT. (53.62 %)
6-	TOTAL ROAD AREA - 6163.32 SQMT. (29.89 %)
7-	TOTAL GREEN AREA - 3400.42 SQMT. (16.49%)

PREVIOUS SANCTION AREA

S.NO.	KHASRA NO.	AREA (SQMT.)	VILLAGE
1.	465(PART)	1603.40 SQMT.	BAIRISALPUR
2.	465(PART)	1780.00 SQMT.	BAIRISALPUR
3.	506	7800.00 SQMT.	BAIRISALPUR
4.	508(PART)	1300.00 SQMT.	BAIRISALPUR
5.	466KHA (PART)	253.63 SQMT.	BAIRISALPUR

TOTAL AREA - 12737.03 SQM.

PRESENT REVISED & EXTENSION AREA

S.NO.	KHASRA NO.	AREA (SQMT.)	VILLAGE
1.	465(PART)	1603.40 SQMT.	BAIRISALPUR
2.	465(PART)	1780.00 SQMT.	BAIRISALPUR
3.	506	7800.00 SQMT.	BAIRISALPUR
4.	508(PART)	1300.00 SQMT.	BAIRISALPUR
5.	466KHA (PART)	253.63 SQMT.	BAIRISALPUR
6.	505 KA	1070.00 SQMT.	BAIRISALPUR
7.	510 (PART)	8225.00 SQMT.	BAIRISALPUR

TOTAL AREA - 22032.03 SQM. (2.203203 HECT.)

BOUNDARY WALL LENGTH- 912.39 RUM.
BOUNDARY WALL HEIGHT- 2.1 MTR.

TREE CALCULATIONS-
50 TREES REQUIRED/HECTARE
TREES REQUIRED TO BE PLANTED - 50 X 2.203203 =110.16 NO.
TREES REQUIRED TO BE PLANTED - 111 TREES

LEGENDS OF DRAINAGE-

- WATER LINE - 50/30 DIA
- SEWER LINE - 300/200/150
- ELECTRICAL POLE - 9.0 MT.R.C.C. ROAD - BITUMINOUS ROAD
- TRANSFORMER
- NO. OF TREES - 111
- NP. MAIN HOLE
- UGT UNDER GROUND TANK
- SHOWN THIS PREVIOUS SANCTION AREA

TITLE : SUBMISSION PLAN

NOTE:-
THIS MAP HAS BEEN PREPARED AS PER
JILA PANCHAYAT BY LAWS 3315/21A-06/2021-22
DATED- 28/10/2025

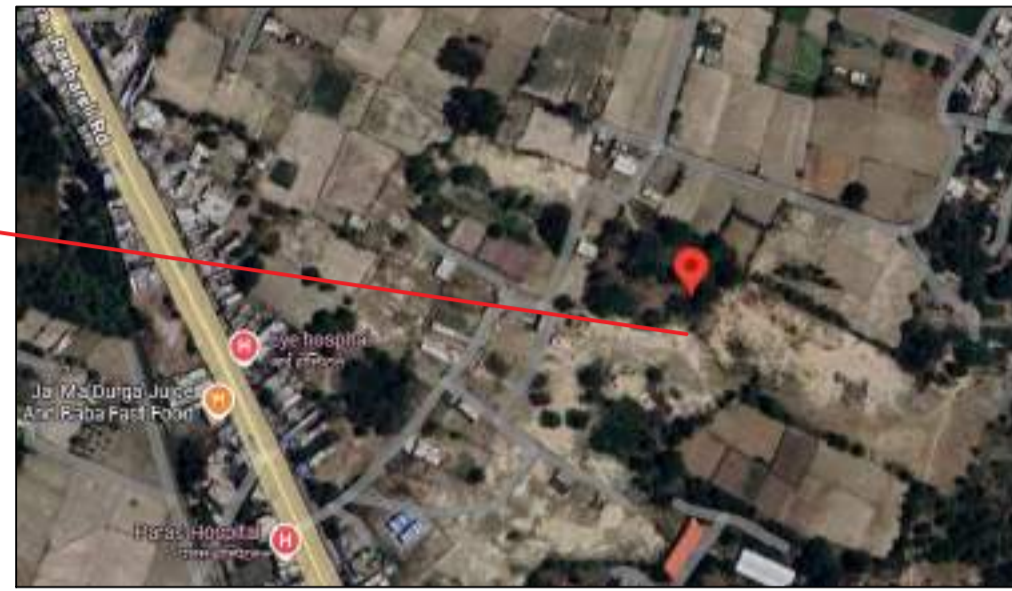
OWNER SIGN :

NORTH

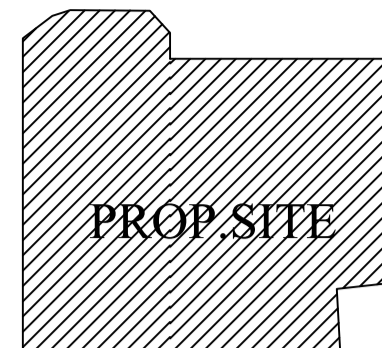


ARCHITECT / ENGINEER SIGN.

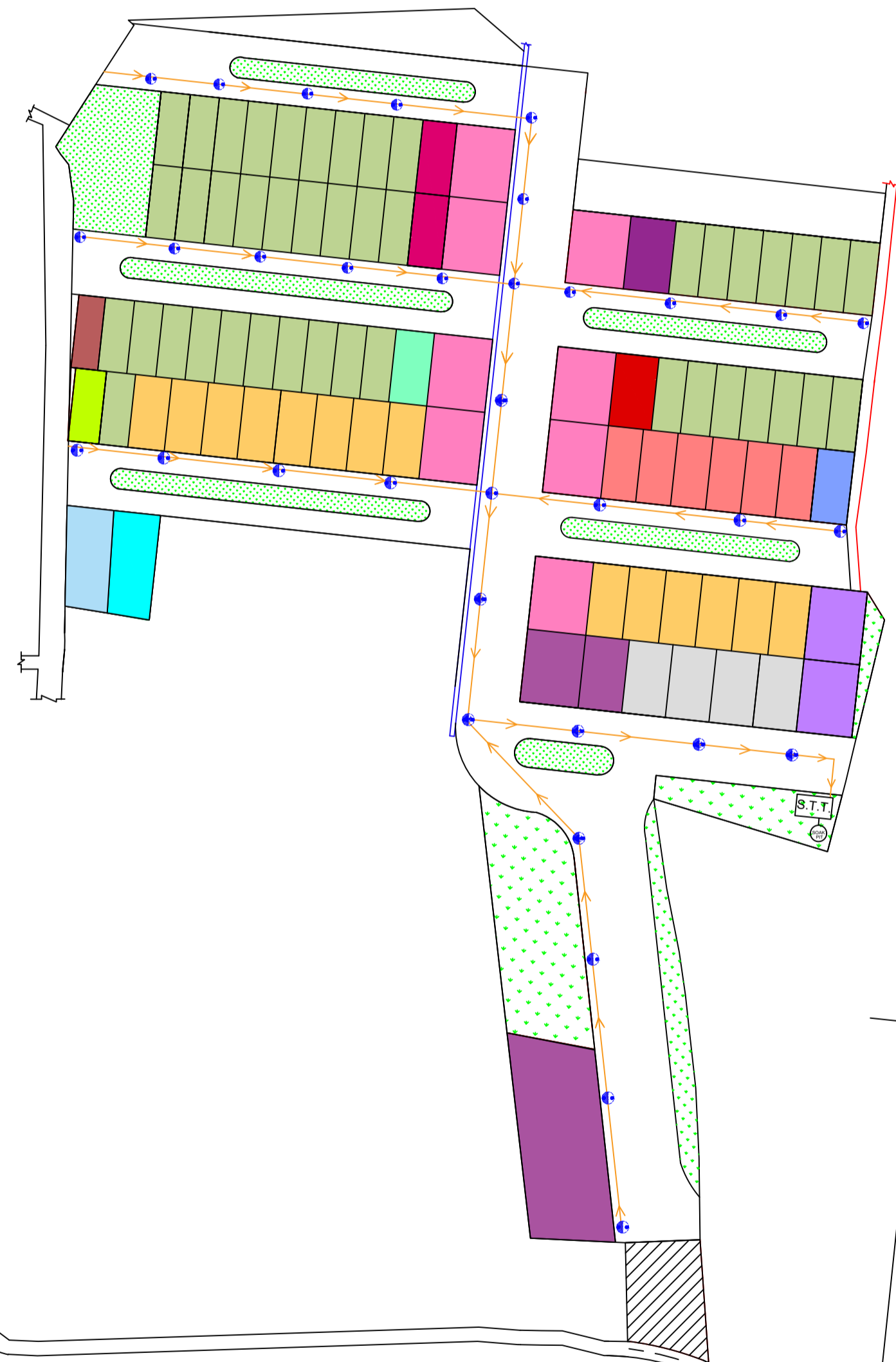
PROPOSED SITE



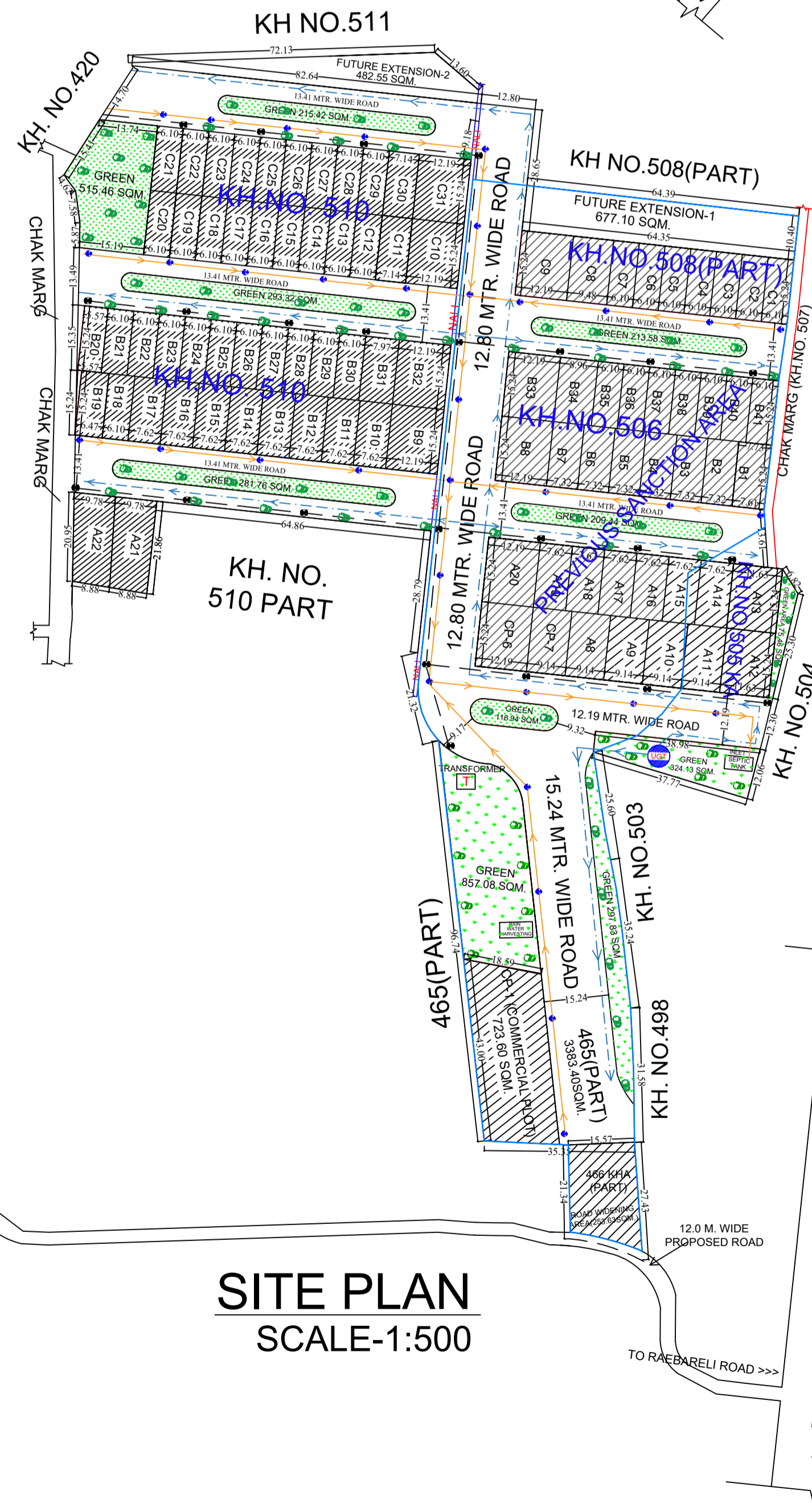
GEO LOCATION
LAT.- 26.557047213630483,
LONG.- 81.04674071370135



KEY PLAN
(SCALE -1:1000)

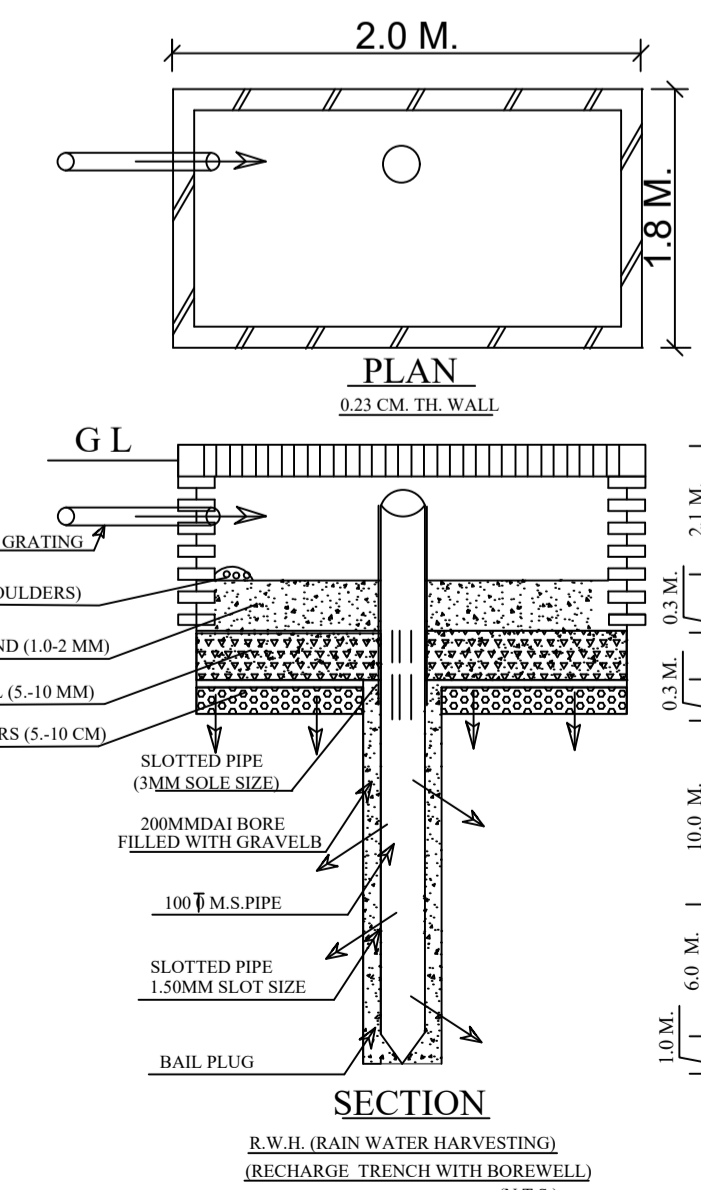


WASTE DISPOSAL PLAN
SCALE (1:500)



SITE PLAN
SCALE-1:500

S.NO	PLOT NO.	NO.OF PLOT	SIZE	AREA (SQM.)	TOTAL AREA (SQM.)	COLOUR CODE
1-	A8,A9,A10,A11	4	9.14 X 15.24	139.35 SQM.	557.40 SQM.	
2-	A12,A13	2	11.63 X 15.24	177.24 SQM.	354.48 SQM.	
3-	A14,A15,A16,A17, A18,A19,B10,B11, B12,B13,B14,B15, B16,B17	14	7.62 X 15.24	116.13 SQM.	1625.82 SQM.	
4-	A20,B8,B9,B32,B33, C9,C10,C31	8	12.19 X 15.24	185.81 SQM.	1486.48 SQM.	
5-	A21	1	-	201.39 SQM.	201.39 SQM.	
6-	A22	1	-	196.53 SQM.	196.53 SQM.	
7-	B1	1	-	116.97 SQM.	116.97 SQM.	
8-	B2,B3,B4,B5,B6,B7	6	7.32 X 15.24	111.48 SQM.	668.88 SQM.	
9-	B18,B21,B22,B23, B24,B25,B26,B27, B28,B29,B30,B35, B36,B37,B38,B39, B40,B41,C1,C2,C3, C4,C5,C6,C7,C12, C13,C14,C15,C16, C17,C18,C19,C20, C21,C22,C23,C24, C25,C26,C27,C28, C29	43	6.10 X 15.24	92.90 SQM.	3994.70 SQM.	
10-	B19	1	6.47 X 15.24	98.60 SQM.	98.60 SQM.	
11-	B20	1	5.57 X 15.24	84.88 SQM.	84.88 SQM.	
12-	B31	1	7.97 X 15.24	121.46 SQM.	121.46 SQM.	
13-	B34	1	8.96 X 15.24	136.55 SQM.	136.55 SQM.	
14-	C8	1	9.48 X 15.24	144.47 SQM.	144.47 SQM.	
15-	C11,C30	2	7.14 X 15.24	108.82 SQM.	217.64 SQM.	
16-	CP-1 (COMMERCIAL PLOT)	1	-	723.60 SQM.	723.60 SQM.	
17-	CP-6 (COMMERCIAL PLOT)	1	12.19 X 15.24	185.81 SQM.	185.81 SQM.	
18-	CP-7 (COMMERCIAL PLOT)	1	9.14 X 15.24	139.35 SQM.	139.35 SQM.	
TOTAL PLOT				90	11055.01 SQM.	



R.W.H. (RAIN WATER HARVESTING)
(RECHARGE TRENCH WITH BOREWELL)
(N.T.S.)

PROJECT TITLE :- VEDIC VILLAGE PHASE-1 EXTENSION
PROPOSED ,REVISED & EXTENSION LAYOUT PLAN OF
M/S ANUSHNAN BUILDERS AND DEVELOPERS PVT. LTD.
SITUATED AT BAIRISALPUR, NIGOHA.
DISTRICT- LUCKNOW.
DIRECTOR- MR. ARUN PRATAP SINGH S/O
SHREE ASHOK SINGH

AREA STATEMENT:-

1-	TOTAL LAND AREA - 22032.03 SQMT.
2-	FUTURE EXTENSION-1 AREA = 677.10 SQMT. FUTURE EXTENSION-2 AREA = 482.55 SQMT. TOTAL FUTURE EXTENSION AREA (1+2) = (1159.65 SQMT.)
3-	ROAD WIDENING AREA - 253.63 SQMT.
4-	NET LAND AREA FOR PROJECT- 20618.75 SQMT.
5-	TOTAL PLOTTED AREA - 11055.01 SQMT. (53.62 %)
6-	TOTAL ROAD AREA - 6163.32 SQMT. (29.89 %)
7-	TOTAL GREEN AREA - 3400.42 SQMT. (16.49%)

PREVIOUS SANCTION AREA

S.NO.	KHASRA NO.	AREA (SQMT.)	VILLAGE
1.	465(PART)	1603.40 SQMT.	BAIRISALPUR
2.	465(PART)	1780.00 SQMT.	BAIRISALPUR
3.	506	7800.00 SQMT.	BAIRISALPUR
4.	508(PART)	1300.00 SQMT.	BAIRISALPUR
5.	466KHA (PART)	253.63 SQMT.	BAIRISALPUR

TOTAL AREA - 12737.03 SQM.

PRESENT REVISED & EXTENSION AREA

S.NO.	KHASRA NO.	AREA (SQMT.)	VILLAGE
1.	465(PART)	1603.40 SQMT.	BAIRISALPUR
2.	465(PART)	1780.00 SQMT.	BAIRISALPUR
3.	506	7800.00 SQMT.	BAIRISALPUR
4.	508(PART)	1300.00 SQMT.	BAIRISALPUR
5.	466KHA (PART)	253.63 SQMT.	BAIRISALPUR
6.	505 KA	1070.00 SQMT.	BAIRISALPUR
7.	510 (PART)	8225.00 SQMT.	BAIRISALPUR

TOTAL AREA - 22032.03 SQM. (2.203203 HECT.)

BOUNDARY WALL LENGTH- 912.39 RUM.
BOUNDARY WALL HEIGHT- 2.1 MTR.

TREE CALCULATIONS-
50 TREES REQUIRED/HECTARE
TREES REQUIRED TO BE PLANTED - 50 X 2.203203 =110.16 NO.
TREES REQUIRED TO BE PLANTED - 111 TREES

LEGENDS OF DRAINAGE-

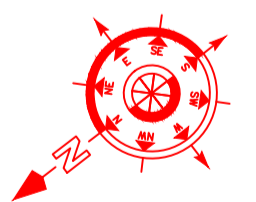
- WATER LINE - 50/30 DIA
- SEWER LINE - 300/200/150
- ELECTRICAL POLE - 9.0 MT.R.C.C. ROAD - BITUMINOUS ROAD
- TRANSFORMER
- NO. OF TREES - 111
- NP. MAIN HOLE
- UGT UNDER GROUND TANK
- SHOWN THIS PREVIOUS SANCTION AREA

TITLE : SUBMISSION PLAN

NOTE:-
THIS MAP HAS BEEN PREPARED AS PER
JILA PANCHAYAT BY LAWS 3315/21A-06/2021-22
DATED- 28/10/2025

OWNER SIGN :

NORTH



ARCHITECT / ENGINEER SIGN.