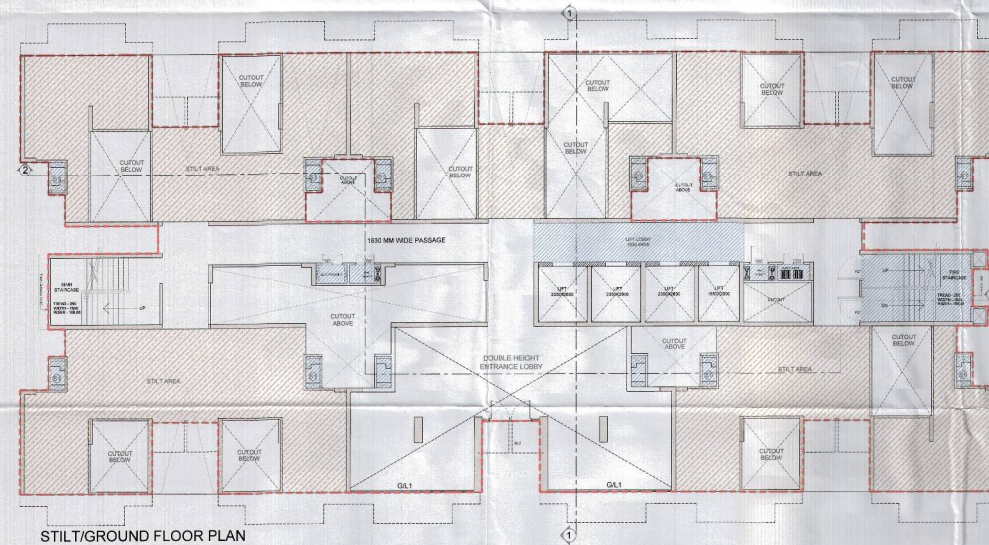


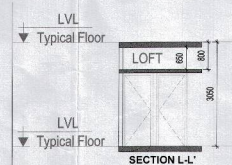
FIRST FLOOR PLAN



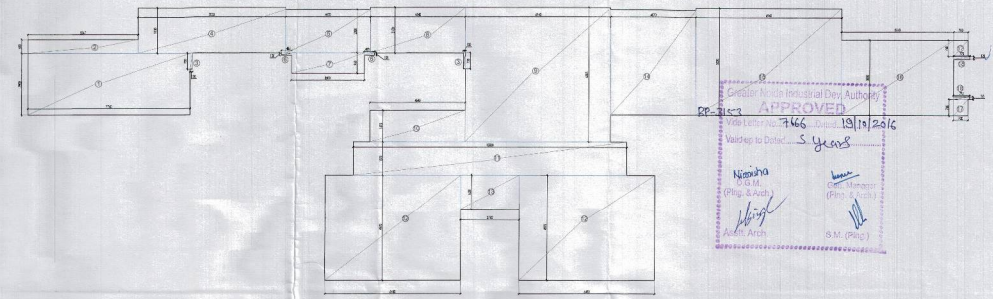
STILT/GROUND FLOOR PLAN

STILT AREA CALCULATION:
 = (TYPICAL FLOOR FAR + TYPICAL FLOOR SERVICES AREA)
 - (GROUND FLOOR ENTRANCE LOBBY AND CORE AREA)
 = (717.92 + 92.74) - (247.03)
 = 563.63 SQ M

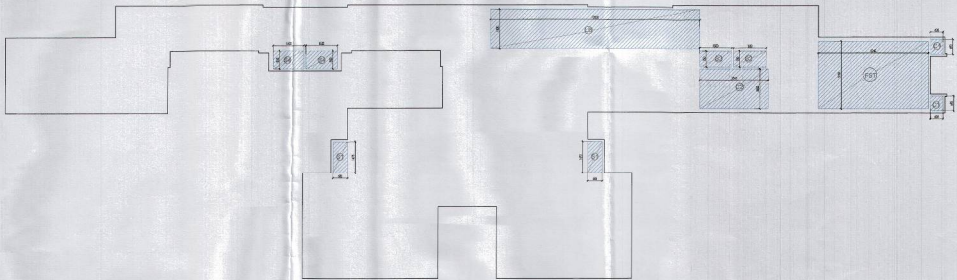
GROUND COVERAGE:
 = (TYPICAL FLOOR FAR + TYPICAL FLOOR SERVICES AREA)
 = (717.92 + 92.74)
 = 810.66 SQ M



SECTION L-L'



STILT/ GROUND FLOOR CORE AREA



STILT/ GROUND FLOOR CORE AREA DEDUCTION

STILT/GROUND FLOOR CORE AREA CALCULATION CHART

ITEM	WIDTH	LENGTH	NO.	AREA (SQ. M)
1	1.70	1.80	1	3.06
2	2.47	1.80	1	4.45
3	3.1	2.70	1	8.37
4	1.03	1.10	1	1.13
5	1.03	1.10	1	1.13
6	1.03	1.10	1	1.13
7	1.03	1.10	1	1.13
8	1.03	1.10	1	1.13
9	1.03	1.10	1	1.13
10	1.03	1.10	1	1.13
11	1.03	1.10	1	1.13
12	1.03	1.10	1	1.13
13	1.03	1.10	1	1.13
14	1.03	1.10	1	1.13
15	1.03	1.10	1	1.13
16	1.03	1.10	1	1.13
17	1.03	1.10	1	1.13
18	1.03	1.10	1	1.13
19	1.03	1.10	1	1.13
20	1.03	1.10	1	1.13
21	1.03	1.10	1	1.13
22	1.03	1.10	1	1.13
23	1.03	1.10	1	1.13
24	1.03	1.10	1	1.13
25	1.03	1.10	1	1.13
26	1.03	1.10	1	1.13
27	1.03	1.10	1	1.13
28	1.03	1.10	1	1.13
29	1.03	1.10	1	1.13
30	1.03	1.10	1	1.13
31	1.03	1.10	1	1.13
32	1.03	1.10	1	1.13
33	1.03	1.10	1	1.13
34	1.03	1.10	1	1.13
35	1.03	1.10	1	1.13
36	1.03	1.10	1	1.13
37	1.03	1.10	1	1.13
38	1.03	1.10	1	1.13
39	1.03	1.10	1	1.13
40	1.03	1.10	1	1.13
41	1.03	1.10	1	1.13
42	1.03	1.10	1	1.13
43	1.03	1.10	1	1.13
44	1.03	1.10	1	1.13
45	1.03	1.10	1	1.13
46	1.03	1.10	1	1.13
47	1.03	1.10	1	1.13
48	1.03	1.10	1	1.13
49	1.03	1.10	1	1.13
50	1.03	1.10	1	1.13
51	1.03	1.10	1	1.13
52	1.03	1.10	1	1.13
53	1.03	1.10	1	1.13
54	1.03	1.10	1	1.13
55	1.03	1.10	1	1.13
56	1.03	1.10	1	1.13
57	1.03	1.10	1	1.13
58	1.03	1.10	1	1.13
59	1.03	1.10	1	1.13
60	1.03	1.10	1	1.13
61	1.03	1.10	1	1.13
62	1.03	1.10	1	1.13
63	1.03	1.10	1	1.13
64	1.03	1.10	1	1.13
65	1.03	1.10	1	1.13
66	1.03	1.10	1	1.13
67	1.03	1.10	1	1.13
68	1.03	1.10	1	1.13
69	1.03	1.10	1	1.13
70	1.03	1.10	1	1.13
71	1.03	1.10	1	1.13
72	1.03	1.10	1	1.13
73	1.03	1.10	1	1.13
74	1.03	1.10	1	1.13
75	1.03	1.10	1	1.13
76	1.03	1.10	1	1.13
77	1.03	1.10	1	1.13
78	1.03	1.10	1	1.13
79	1.03	1.10	1	1.13
80	1.03	1.10	1	1.13
81	1.03	1.10	1	1.13
82	1.03	1.10	1	1.13
83	1.03	1.10	1	1.13
84	1.03	1.10	1	1.13
85	1.03	1.10	1	1.13
86	1.03	1.10	1	1.13
87	1.03	1.10	1	1.13
88	1.03	1.10	1	1.13
89	1.03	1.10	1	1.13
90	1.03	1.10	1	1.13
91	1.03	1.10	1	1.13
92	1.03	1.10	1	1.13
93	1.03	1.10	1	1.13
94	1.03	1.10	1	1.13
95	1.03	1.10	1	1.13
96	1.03	1.10	1	1.13
97	1.03	1.10	1	1.13
98	1.03	1.10	1	1.13
99	1.03	1.10	1	1.13
100	1.03	1.10	1	1.13

STILT / GROUND FLOOR CORE AREA DETAILS FOR 15% SERVICES FAR

ITEM	WIDTH	LENGTH	NO.	AREA (SQ. M)
1	1.70	1.80	1	3.06
2	2.47	1.80	1	4.45
3	3.1	2.70	1	8.37
4	1.03	1.10	1	1.13
5	1.03	1.10	1	1.13
6	1.03	1.10	1	1.13
7	1.03	1.10	1	1.13
8	1.03	1.10	1	1.13
9	1.03	1.10	1	1.13
10	1.03	1.10	1	1.13
11	1.03	1.10	1	1.13
12	1.03	1.10	1	1.13
13	1.03	1.10	1	1.13
14	1.03	1.10	1	1.13
15	1.03	1.10	1	1.13
16	1.03	1.10	1	1.13
17	1.03	1.10	1	1.13
18	1.03	1.10	1	1.13
19	1.03	1.10	1	1.13
20	1.03	1.10	1	1.13
21	1.03	1.10	1	1.13
22	1.03	1.10	1	1.13
23	1.03	1.10	1	1.13
24	1.03	1.10	1	1.13
25	1.03	1.10	1	1.13
26	1.03	1.10	1	1.13
27	1.03	1.10	1	1.13
28	1.03	1.10	1	1.13
29	1.03	1.10	1	1.13
30	1.03	1.10	1	1.13
31	1.03	1.10	1	1.13
32	1.03	1.10	1	1.13
33	1.03	1.10	1	1.13
34	1.03	1.10	1	1.13
35	1.03	1.10	1	1.13
36	1.03	1.10	1	1.13
37	1.03	1.10	1	1.13
38	1.03	1.10	1	1.13
39	1.03	1.10	1	1.13
40	1.03	1.10	1	1.13
41	1.03	1.10	1	1.13
42	1.03	1.10	1	1.13
43	1.03	1.10	1	1.13
44	1.03	1.10	1	1.13
45	1.03	1.10	1	1.13
46	1.03	1.10	1	1.13
47	1.03	1.10	1	1.13
48	1.03	1.10	1	1.13
49	1.03	1.10	1	1.13
50	1.03	1.10	1	1.13
51	1.03	1.10	1	1.13
52	1.03	1.10	1	1.13
53	1.03	1.10	1	1.13
54	1.03	1.10	1	1.13
55	1.03	1.10	1	1.13
56	1.03	1.10	1	1.13
57	1.03	1.10	1	1.13
58	1.03	1.10	1	1.13
59	1.03	1.10	1	1.13
60	1.03	1.10	1	1.13
61	1.03	1.10	1	1.13
62	1.03	1.10	1	1.13
63	1.03	1.10	1	1.13
64	1.03	1.10	1	1.13
65	1.03	1.10	1	1.13
66	1.03	1.10	1	1.13
67	1.03	1.10	1	1.13
68	1.03	1.10	1	1.13
69	1.03	1.10	1	1.13
70	1.03	1.10	1	1.13
71	1.03	1.10	1	1.13
72	1.03	1.10	1	1.13
73	1.03	1.10	1	1.13
74	1.03	1.10	1	1.13
75	1.03	1.10	1	1.13
76	1.03	1.10	1	1.13
77	1.03	1.10	1	1.13
78	1.03	1.10	1	1.13
79	1.03	1.10	1	1.13
80	1.03	1.10	1	1.13
81	1.03	1.10	1	1.13
82	1.03	1.10	1	1.13
83	1.03	1.10	1	1.13
84	1.03	1.10	1	1.13
85	1.03	1.10	1	1.13
86	1.03	1.10	1	1.13
87	1.03	1.10	1	1.13
88	1.03	1.10	1	1.13
89	1.03	1.10	1	1.13
90	1.03	1.10	1	1.13
91	1.03	1.10	1	1.13
92	1.03	1.10	1	1.13
93	1.03	1.10	1	1.13
94	1.03	1.10	1	1.13
95	1.03	1.10	1	1.13
96	1.03	1.10	1	1.13
97	1.03	1.10	1	1.13
98	1.03	1.10	1	1.13
99	1.03	1.10	1	1.13
100	1.03	1.10	1	1.13

TYPICAL FLOOR FAR AREA CALCULATION OF UNIT TYPE-I

TYPE - I				
FAIR AREA CALCULATION OF UNIT TYPE I				
ITEM	WIDTH	LENGTH	NO.	AREA (SQ. M)
1	1.180	3.350	2	10.90
2	1.54	3.350	1	11.86
3	2.135	1.540	1	3.46
4	0.780	1.175	2	2.24
5	5.740	4.470	2	26.83
6	0.325	0.230	4	0.30
TOTAL				54.45
				-1
DEDUCTION UNDER SERVICES FAIR				
ITEM	WIDTH	LENGTH	NO.	AREA (SQ. M)
CB	1.180	0.030	2	1.42
SS	0.985	1.475	1	1.01
TOTAL				2.43
				-2
FAIR AREA CALCULATION OF UNIT TYPE-I = 2 - 2				
NET FAIR AREA OF UNIT TYPE-I				52.02