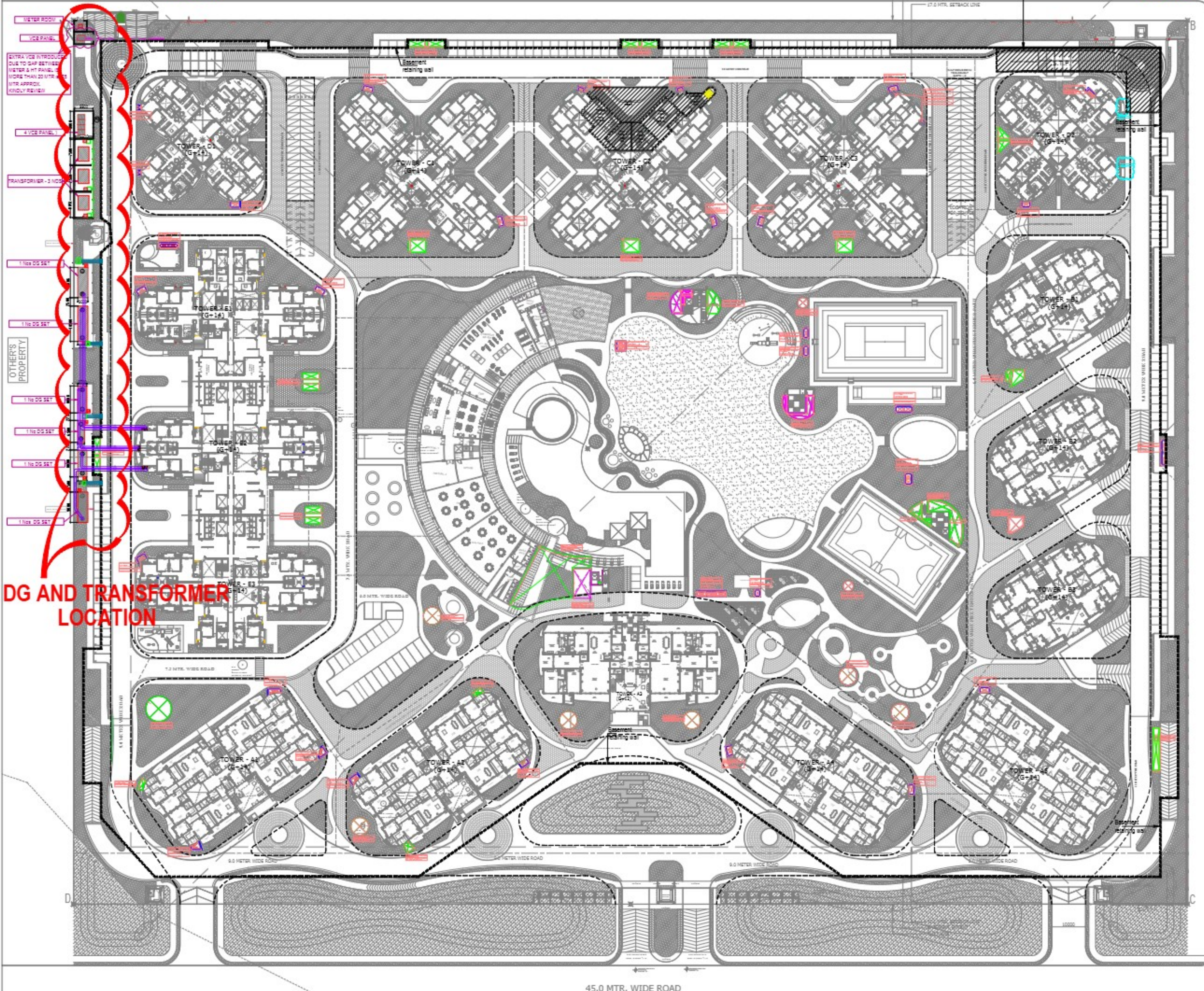


EXISTING 24.0 MTR. WIDE ROAD

Municipal Drain
I.L.= 96.430

SEWAGE TREATMENT PLANT - 720 KLD
Municipal Drain
I.L.= 94.705

NOTE 1:
MANHOLE TOP LEVEL TO BE
TAKEN / COORDINATED FROM
THE FINAL LANDSCAPE DRAWING



**DG AND TRANSFORMER
LOCATION**

ALL YARD HYDRANT CONNECTED
FROM BASEMENT HYDRANT PIPE

ALL YARD HYDRANT CONNECTED
FROM BASEMENT HYDRANT PIPE



| Rev. No. | Date | Revision |
|----------|------------|--|
| 01 | 20.08.2023 | Modified as per Final Landscape Plan and Grading |

Project:
RISHITA - MULBERRY HEIGHTS
POCKET C, SECTOR-6, SUSHANT GOLF CITY, HI-TECH
TOWNSHIP LUCKNOW-226010 (UP)

Title:
LAYOUT PLAN

Subtitle:
EXTERNAL ELECTRICAL SYSTEM

Drawing Released For:

APPROVAL SUBMISSION
 ADVANCE COPY CONSTRUCTION

Dwg. No.: **RMH/ES-04**

Scale: **1 : 600** Drawn By: **Amit**

Date: **Nov. 2016** Design By: **Devesh Agarwal**

Checked By: **Anand Havelia**

Architects:
DESIGN FORUM INTERNATIONAL
K-47, KAILASH COLONY, NEW DELHI 110048
TEL: +91-11-4259800 FAX: +91-11-4259801

Services Consultant:
Consummate Engineering Services (P) Ltd.

NoIDA Office : B - 07, Sector - 07, NoIDA - 201 301
 Tel : (0120) 2302000 (30 Lines)
 Loc. Office : R 005, Roshni Plumeria, Ganti Nagar, Lucknow
 e-mail : mail@cespl.in, website : www.cespl.in

EXISTING 30.0 MTR. WIDE ROAD

45.0 MTR. WIDE ROAD