

BLOCK - F61

NOTES:-  
1. ALL DIMENSIONS ARE IN MM

Internal Electric Plan  
For F-64



DATE	REV. NO.	ISSUED TO	INITIAL

DATE	REV. NO.	BRIEF RECORD	INITIAL

CONSULTANTS  
SAJAG CONSULTANTS  
C-146 KILOKRI  
NEAR JAYAHARANI BAGH CROSSING  
INDIA  
TELEPHONE: 9420333129

DESIGNED BY: ELECT. ABULKABIR VIVEK  
DATE: 20.05.12  
UNIT: M/M

SCHEME: AWADH VIHAR YOINA, LUCKNOW.

DRG. TITLE: ELECTRICAL LAYOUT TYPICAL FLOOR PLAN (BLOCK F-64)

PROJECT: GROUP HOUSING IN NANDINI ENCLAVE (SECT.-3)

DATE: 08.08.14

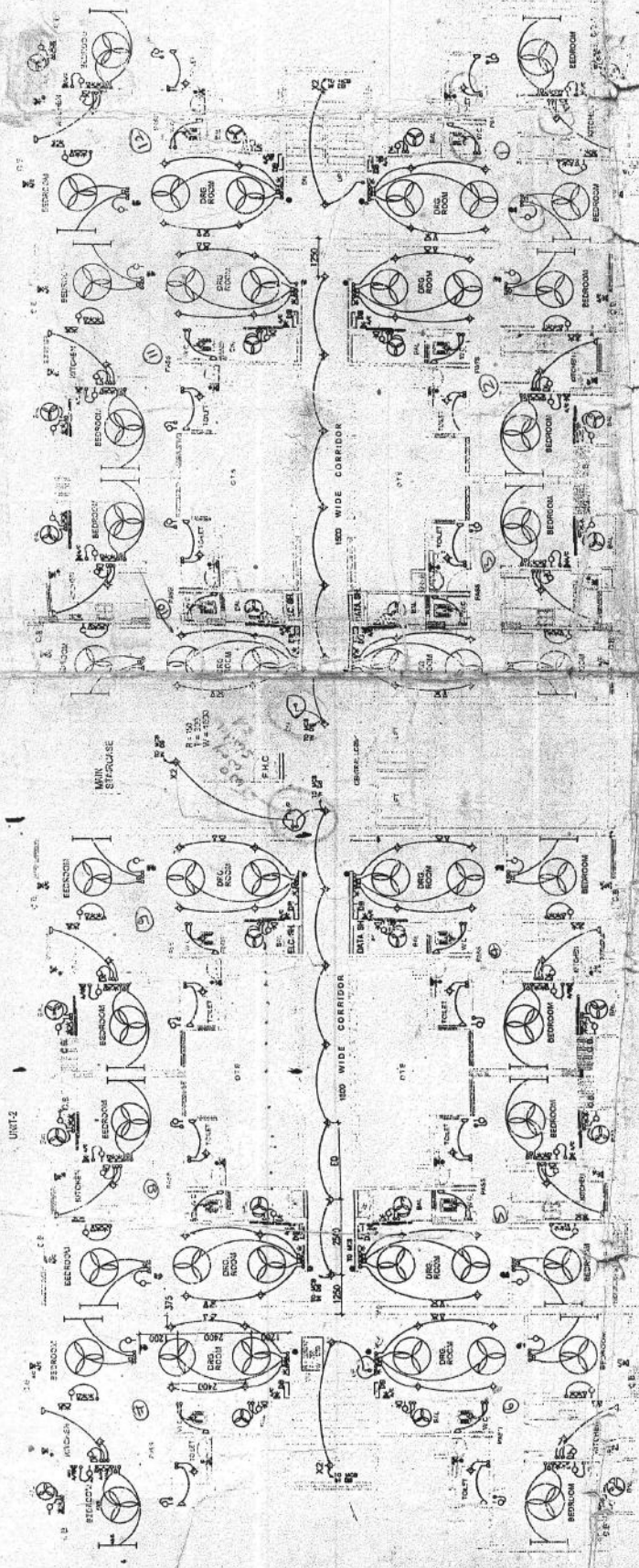
SCALE: N.T.S

CHECKED: AKASHA INFRASTRUCTURE (P) LTD. D-5, GROUND FLOOR, SECTOR 10, NOIDA (UTTER PRADESH) INDIA.

DATE: 08.08.14

SCALE: N.T.S

CHECKED: U.P. LEV. IN HABITATIA GRANDESI MARG, LUCKNOW.



ELECT LAYOUT TYPICAL FLOOR PLAN

S.NO	DESCRIPTION	SYMBOL
1	6 AMP. ONE-WAY SWITCH (AT 100 MM F.F.L)	⊖
2	CEILING FAN REGULATOR (AT 100 MM F.F.L)	⊖
3	1 X 36 WATT FLOURESCENT FITTURE	⊖
4	CEILING FROD LUPIT	⊖
5	WALL BRACKET LIGHT (100mm minimum) FROM F.F.L.	⊖
6	CEILING FAN	⊖
7	TV. OUTLET (AT 200 MM F.F.L) ABOVE SPT. LEVEL	⊖
8	CALL BELL PUSH (AT 100 MM F.F.L)	⊖
9	CALL BELL BUZZER (AT 200 MM F.F.L)	⊖
10	6 AMP/8 PH. OUTLET WITHOUT SWITCH FOR EXHAUST FAN (AT 200 MM F.F.L)	⊖
11	6 AMP. OUTLET WITH SWITCH (AT 200 MM F.F.L) (ABOVE SPT. LEVEL)	⊖
12	6 AMP/8 PH. OUTLET WITH SWITCH (AT 200 MM F.F.L) (ABOVE SPT. LEVEL)	⊖
13	DISTRIBUTION BOARD (BOTTOM 1500 MM ABOVE F.F.L)	⊖

LEGEND

UNITED IN FLAT

DISTRIBUTION BOARD (BOTTOM 1500 MM ABOVE F.F.L)

1/C FROM METER BOARD

1/C TO EMERGENCY CIRCUIT

AUTO CHANGE OVER ARRANGEMENT

1/C FROM METER BOARD

1/C TO EMERGENCY CIRCUIT

1/C FROM METER BOARD

1/C TO EMERGENCY CIRCUIT

1/C FROM METER BOARD

1/C TO EMERGENCY CIRCUIT



Handwritten signatures and initials: J.E., SAE, etc.

NOTES:

1. ALL DIMENSIONS ARE IN MM

*Internal Electric Plan*  
For - F-84



DATE	REV. NO.	ISSUED TO	INITIAL

DATE	REV. NO.	REF. REV. OR	REVISION

CONSULTANTS  
**SAJAG CONSULTANTS**  
G-145 MAHARANI BAGH CROSSING  
NEW DELHI - 110014  
TELEPHONE - 2634-9059, 9968844034

DESIGNER: DEBARI CHAKRABARTY  
PROJECT MANAGER: ABULKALAM VUIEK  
DATE: 2009.5.7.0102  
SCALE: 1:100

SCHEME:  
A WADH VEHAR YOJNA, LUCKNOW

DRG. TITLE:  
ELECTRICAL LAYOUT  
TYPICAL FLOOR PLAN  
(BLOCK F-84)

PROJECT:  
GROUP HOUSING IN  
NANDINI ENCLAVE (SECT.-3)

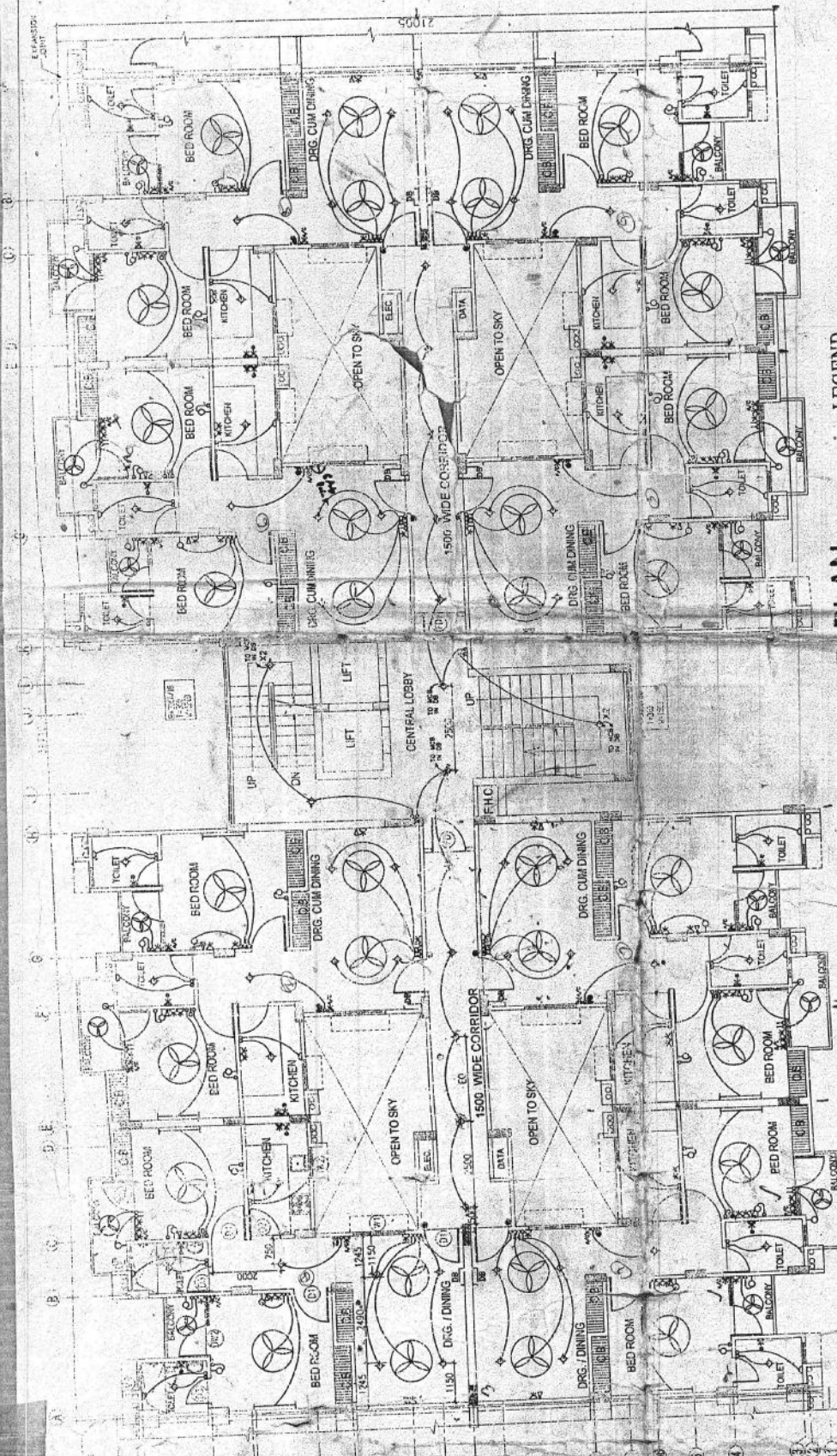
DATE: 14.05.14

SCALE: 1:100

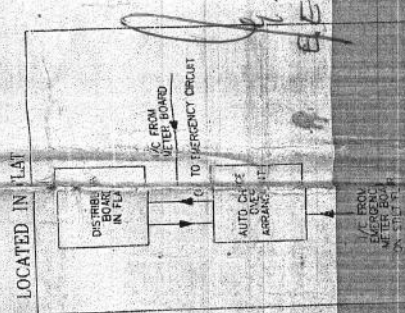
CLIENT:  
AKASHA INFRASTRUCTURE PVT. LTD.  
D-5 GROUND FLOOR, SECTOR 16, GATE NO. 1  
(UTTAR PRADESH-201001)

OWNER:  
U.P. P.E. VP. (M) MARIYA IQBAL  
MAUNG LUCKNOW

THIS DRAWING AND DESIGN IS THE PROPERTY OF THE SAJAG CONSULTANTS AND WILL NOT BE REPRODUCED OR LOANED EXCEPT BY THE WRITTEN CONSENT OF S.C.



**TYPICAL FLOOR PLAN**



**LEGEND**

S.NO	DESCRIPTION	SYMBOL
1	6 AMP. ONE-WAY SWITCH (AT 100 MM F.F.L.)	⊖
2	CEILING FAN REGULATOR (AT 1100 MM F.F.L.)	⊖
3	1 X 36 WATT FLUORESCENT FIXTURE	⊖
4	CEILING FAN	⊖
5	HALL BRACKET LIGHT (2100MM (minimum) FROM F.F.L.)	⊖
6	TV. OUTLET (AT 200 MM F.F.L.) (ABOVE SKIRT LEVEL)	⊖
7	CALL BELL PUSH (AT 1100 MM F.F.L.)	⊖
8	CALL BELL BUZZER (AT 2400 MM F.F.L.)	⊖
9	CALL BELL PUSH (AT 1100 MM F.F.L.)	⊖
10	6 AMP / 6 PN OUTLET WITHOUT SWITCH FOR EXHAUST FAN (AT 2500 MM F.F.L.)	⊖
11	6 AMP. OUTLET WITH SWITCH (AT 200 MM F.F.L.) (ABOVE SKIRT LEVEL)	⊖
12	15 AMP / 6 PN OUTLET WITH SWITCH (AT 200 MM F.F.L.) (ABOVE SKIRT LEVEL)	⊖
13	DISTRIBUTION BOARD (BOTTOM 400 MM ABOVE F.F.L.)	⊖
14	20 AMP / 6 PN OUTLET WITH SWITCH FOR A/C (AT 200 MM F.F.L.) (ABOVE SKIRT LEVEL)	⊖
15	15 AMP / 6 PN OUTLET WITH SWITCH FOR USE/SEW (AT 1850 MM F.F.L.) (ABOVE TILE LEVEL, AWAY FROM SHOWER AREA)	⊖

LOCATED IN LAY

12  
11  
10

*Handwritten signatures and initials: M. J. E., A. E., and others.*