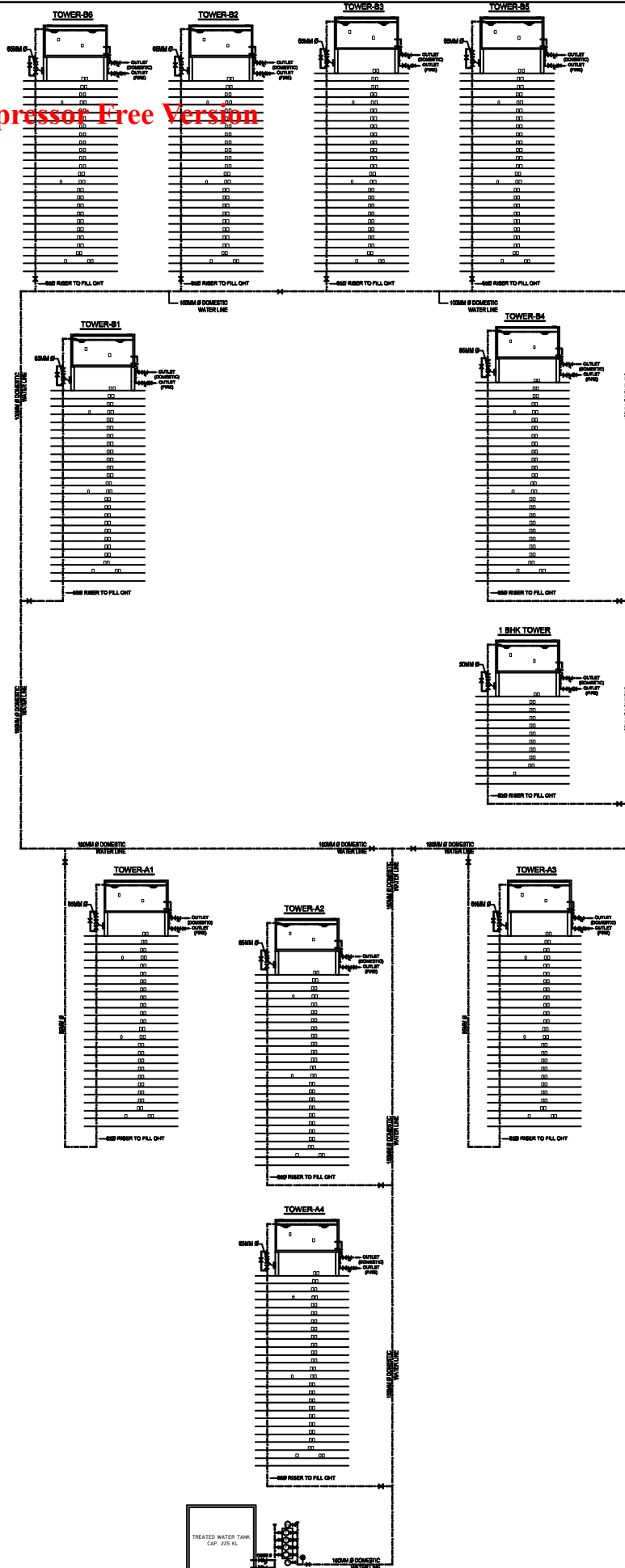


PDF Compressor Free Version



rev. no.	date	revision

S. No.	SYMBOL	DESCRIPTION
1.		BUTTERFLY VALVE (PN 16)
2.		BUTTERFLY VALVE (PN 20)
3.		NON RETURN VALVE (PN 16)
4.		NON RETURN VALVE (PN 20)
5.		STRAINER
6.		MOTORIZED BUTTERFLY VALVE
7.		WATER METER
8.		HYDROPNEUMATIC PUMPS FOR DOMESTIC WATER SUPPLY
9.		PRESSURE VESSEL FOR HYDROPNEUMATIC PUMPS
10.		CONTROL UNIT FOR MOTORIZED BUTTERFLY VALVE
11.		ELECTRICAL CONTROL CABLE
12.		DOMESTIC WATER SUPPLY PIPE

Hydropneumatic System Details :

Domestic Water Supply Pump :
a) Hydropneumatic System for Domestic Water Supply - 4 Nos. In one set (Dew+1e)
Flow Rate = 600 LPM Each
Head = 120 Meter

NOTES :

- Material of Pipe :
a) Pump Room - GI (Class C)
b) Pipe Suspended from basement ceiling - GI (Class B)
c) Riser to OHT - GI (Class B)
- For automation, Level Sensors of Motorized butterfly Valve to be installed in domestic water tank.
- Domestic Water Supply Pipe Header shall be run by suspended from upper basement ceiling.
- Schematic Drawing should be read along with Final Basement Coordinated Drawing.

project
**Rudra Palace Height
At Greater Noida**

title
**Water Supply System - Schematic
From Pump to OHT (Domestic)**
subtitle
Plumbing Drawing

drawing released for
☐ APPROVAL
☐ ADVANCE COPY
☐ SUBMISSION
☒ CONSTRUCTION

drg. no. PH / WS - 03
scale N.T.S.
date 24-05-2018

drawn by
designed by Shikha Kalra
checked by Anand Havelle

architects
Deepak Mehta & Associates
Architects, Planners, Valuers, Landscape & Interiors
Plot No. 16 Abhishek Plaza L.S.C. Mayor Vihar Ph II Delhi 91, Tel : 6372180

services consultant
Consummate Engineering Services (P) Ltd.
Noida Office : B - 67, Sector - 67, Noida - 201 301
Lko. Office : R-66, Rohita Panchsila, Gauri Nagar, Lucknow
e mail : mail@cespl.com, website : www.cespl.in