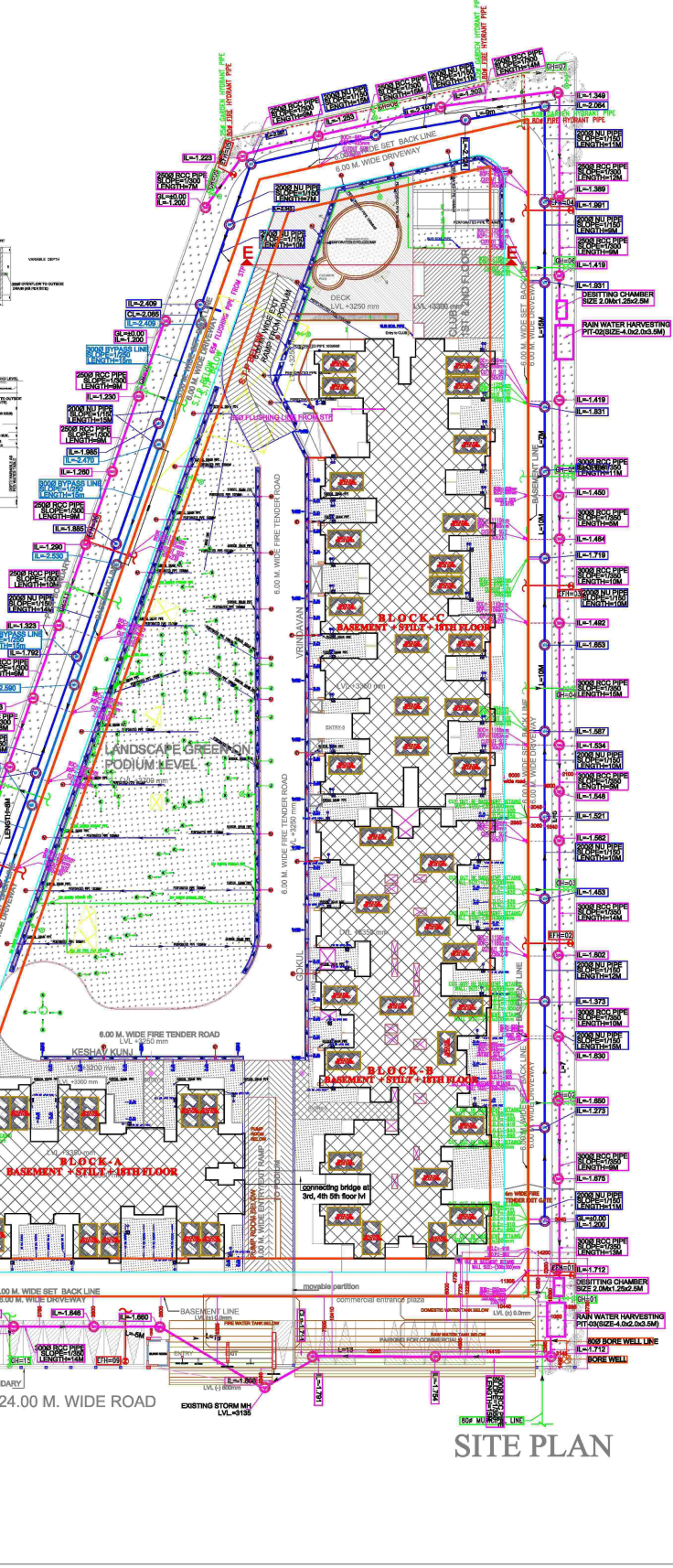
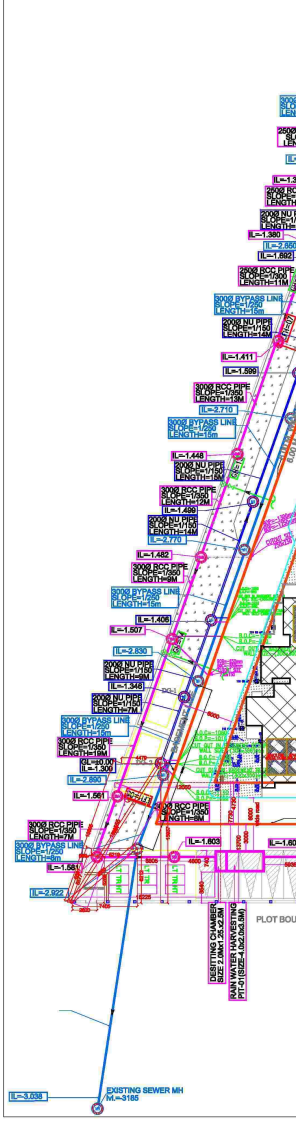
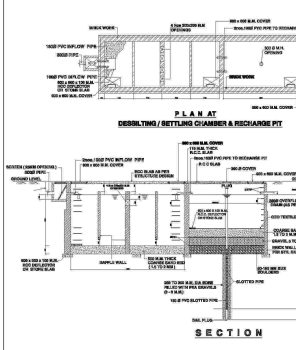
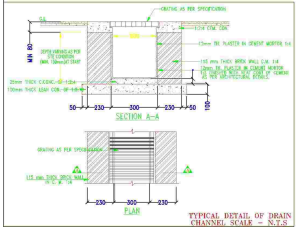


STANDARD CATCH BASIN SIZE & DEPTH	
CATCH BASIN SIZE	DEPTH
CB-450x450MM	0.45M-0.6M
CB-600x600MM	0.6M-0.75M
CB-750x750MM	0.75M-0.9M
CB-900x900MM	0.9M-1.5M

STANDARD MANHOLE SIZE & DEPTH	
MANHOLE SIZE	DEPTH
MH-900x800MM	0.45M-0.9M
MH-910Ø	0.9M-1.65M
MH-1220Ø	1.65M-2.3M
MH-1520Ø	ABOVE-2.3M



1. BEVERAGE MANHOLE	○
2. DRAINAGE MANHOLE	○
3. CATCH BASIN (400x400)	□
4. CATCH BASIN (600x600)	□
5. CATCH BASIN (750x750)	□
6. BEVERAGE PIPE LINE	—
7. DRAINAGE PIPE LINE	—
8. WASTE PIPE IN BASEMENT CEILING	—
9. BALCONY WASTE PIPE IN BASEMENT CEILING	—
10. RAIN WATER PIPE IN BASEMENT CEILING	—
11. BORE WELL	○
12. YARD HYDRANT	○
13. GARDEN HYDRANT	○

LEGEND	
SYMBOL	DESCRIPTION
○	110 ØD ØPVC PIPE FOR PODIUM SURFACE WATER
○	160 ØD ØPVC PIPE FOR PODIUM DRAINAGE
○	110 ØD ØPVC PIPE FOR PODIUM SUBSOIL WATER FOR GREEN AREA IN FLAT
○	300Ø SLEEVE
○	100Ø SLEEVE
○	150Ø SLEEVE FOR PODIUM TOE WALL

EXTERNAL FIRE HYDRANT(EFH=80Ø) --- BOP=850mm  
 BOC=900mm  
 GARDEN HYDRANT(GH=25Ø) --- BOP=800mm  
 BOC=850mm

PLUMBING LEGEND:	
□	RAIN WATER HARVESTING
□	SPACE FOR SOLAR PANEL



**Direction**

**Key Plan**

PROJECT: DRAWING FOR THE GROUP HOUSING PROJECT AT PLOT NO.GR-03/JGH-03, SECTOR 16C GREATER NOIDA.

OWNER: MRS. PRITHVILKAL BUILDWELL (P) L.T.D. THROUGH DIRECTOR-M. BHARAT GOYAL

OWNER SIGN: ARCHITECT SIGN:

PLAN OF DEVELOPMENT OF WORK

**SITE PLAN**

**Design Studio**

ANUJ AGARWAL ARCHITECTS  
 OFFICE: A-244 KAUSHAMBH GHAZIABAD (U.P.)  
 Ph: 0120-4664162, 4166712, TEL. FAX - 2773992  
 e-mail: arn.anujagwal@gmail.com

SCALE: Dwg. No. NTS DEATY: CHECKED BY: DATE: DGS-01