

GROUND FLOOR: FAR AREA CALCULATION CHART 3BHK LARGE BLOCK-T2

ITEM	AREA	NO	AREA (SQ M)
GROUND FLOOR ENT & CORE	186.78	1	186.780
TOTAL			186.78

FIRST FLOOR: FAR AREA CALCULATION CHART 3BHK LARGE BLOCK-T2

ITEM	AREA	NO	AREA (SQ M)
TYPE - FIRST FLOOR	180.32	2	360.640
FIRST FLOOR CORE AREA	37.73	1	37.730
TOTAL			398.370

TYPICAL FLOOR: FAR AREA CALCULATION CHART 3BHK LARGE BLOCK-T2

ITEM	AREA	NO	AREA (SQ M)
TYPE - TYP FLOOR	186.82	1	186.820
TYP FLOOR CORE AREA	37.73	1	37.730
TOTAL			224.550

32nd & 33rd FLOOR: FAR AREA CALCULATION CHART 3BHK LARGE BLOCK-T2

ITEM	AREA	NO	AREA (SQ M)
TYPE - 4	180.32	2	360.640
TYP FLOOR CORE AREA	37.73	1	37.730
TOTAL			398.370

34TH FLOOR: FAR AREA CALCULATION CHART 3BHK LARGE BLOCK-T2

ITEM	AREA	NO	AREA (SQ M)
TYPE - 4	8.842	2	17.684
TYP FLOOR CORE AREA	43.233	1	43.233
TOTAL			61.917

BLOCK T-2 3BHK LARGE TOTAL F.A.R AREA ON ALL FLOORS WITH CORE AREA

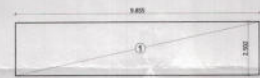
FLOOR	AREA PER FLOOR	NO OF FLOORS	TOTAL NO OF FLOORS	TOTAL AREA
1 GROUND FLOOR	186.78	1	2	373.560
2 1ST FLOOR	424.96	2	2	849.920
3 2ND FLOOR	376.44	2	2	752.880
4 3RD FLOOR	376.44	2	2	752.880
5 4TH FLOOR	376.44	2	2	752.880
6 5TH FLOOR	376.44	2	2	752.880
7 6TH FLOOR	376.44	2	2	752.880
8 7TH FLOOR	376.44	2	2	752.880
9 8TH FLOOR	376.44	2	2	752.880
10 9TH FLOOR	376.44	2	2	752.880
11 10TH FLOOR	376.44	2	2	752.880
12 11TH FLOOR	376.44	2	2	752.880
13 12TH FLOOR	376.44	2	2	752.880
14 13TH FLOOR	376.44	2	2	752.880
15 14TH FLOOR	376.44	2	2	752.880
16 15TH FLOOR	376.44	2	2	752.880
17 16TH FLOOR	376.44	2	2	752.880
18 17TH FLOOR	376.44	2	2	752.880
19 18TH FLOOR	376.44	2	2	752.880
20 19TH FLOOR	376.44	2	2	752.880
21 20TH FLOOR	376.44	2	2	752.880
22 21ST FLOOR	376.44	2	2	752.880
23 22ND FLOOR	376.44	2	2	752.880
24 23RD FLOOR	376.44	2	2	752.880
25 24TH FLOOR	376.44	2	2	752.880
26 25TH FLOOR	376.44	2	2	752.880
27 26TH FLOOR	376.44	2	2	752.880
28 27TH FLOOR	376.44	2	2	752.880
29 28TH FLOOR	376.44	2	2	752.880
30 29TH FLOOR	376.44	2	2	752.880
31 30TH FLOOR	376.44	2	2	752.880
32 31ST FLOOR	424.96	2	2	849.920
33 32ND FLOOR	424.96	2	2	849.920
34 33RD FLOOR	424.96	2	2	849.920
35 34TH FLOOR	382.22	1	1	382.220
TOTAL	1743.180	37	37	65504.770

BLOCK T-2 3BHK LARGE TOTAL SERVICES F.A.R AREA CALCULATION

FLOOR	AREA PER FLOOR	NO OF FLOORS	TOTAL NO OF FLOORS	TOTAL AREA
1 GROUND FLOOR	186.78	1	1	186.780
2 1ST FLOOR	424.96	2	2	849.920
3 2ND FLOOR	376.44	2	2	752.880
4 3RD FLOOR	376.44	2	2	752.880
5 4TH FLOOR	376.44	2	2	752.880
6 5TH FLOOR	376.44	2	2	752.880
7 6TH FLOOR	376.44	2	2	752.880
8 7TH FLOOR	376.44	2	2	752.880
9 8TH FLOOR	376.44	2	2	752.880
10 9TH FLOOR	376.44	2	2	752.880
11 10TH FLOOR	376.44	2	2	752.880
12 11TH FLOOR	376.44	2	2	752.880
13 12TH FLOOR	376.44	2	2	752.880
14 13TH FLOOR	376.44	2	2	752.880
15 14TH FLOOR	376.44	2	2	752.880
16 15TH FLOOR	376.44	2	2	752.880
17 16TH FLOOR	376.44	2	2	752.880
18 17TH FLOOR	376.44	2	2	752.880
19 18TH FLOOR	376.44	2	2	752.880
20 19TH FLOOR	376.44	2	2	752.880
21 20TH FLOOR	376.44	2	2	752.880
22 21ST FLOOR	376.44	2	2	752.880
23 22ND FLOOR	376.44	2	2	752.880
24 23RD FLOOR	376.44	2	2	752.880
25 24TH FLOOR	376.44	2	2	752.880
26 25TH FLOOR	376.44	2	2	752.880
27 26TH FLOOR	376.44	2	2	752.880
28 27TH FLOOR	376.44	2	2	752.880
29 28TH FLOOR	376.44	2	2	752.880
30 29TH FLOOR	376.44	2	2	752.880
31 30TH FLOOR	376.44	2	2	752.880
32 31ST FLOOR	424.96	2	2	849.920
33 32ND FLOOR	424.96	2	2	849.920
34 33RD FLOOR	424.96	2	2	849.920
35 34TH FLOOR	382.22	1	1	382.220
TOTAL SERVICES F.A.R	3331.180	37	37	125044.770

STILT FLOOR PLAN 3BHK LARGE

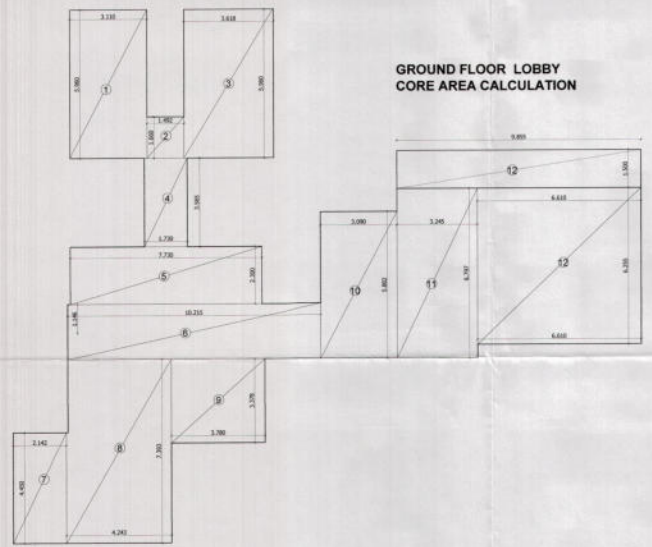
ENTRANCE LOBBY AREA CALCULATION



GROUND FLOOR & ENTRANCE LOBBY & CORE AREA CALCULATION CHART 3BHK LARGE BLOCK-T2

ITEM	WIDTH	LENGTH	NO	AREA (SQ M)
1	3.118	9.000	1	28.062
2	1.400	9.000	1	12.600
3	2.818	9.000	1	25.362
4	1.700	9.000	1	15.300
5	3.700	9.000	1	33.300
6	19.375	2.227	1	43.159
7	2.142	4.459	1	9.552
8	4.459	7.291	1	32.500
9	3.700	3.279	1	12.129
10	3.000	9.000	1	27.000
11	3.246	9.000	1	29.214
12	6.616	9.000	1	59.544
13	9.000	1.530	1	13.770
TOTAL				236.369

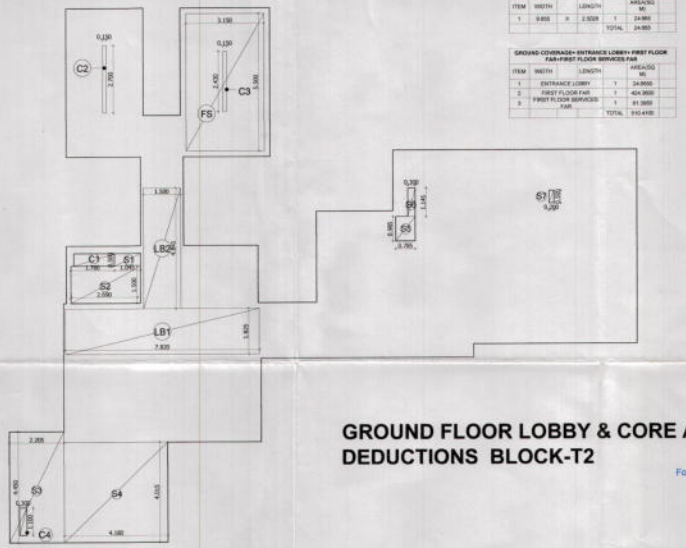
GROUND FLOOR LOBBY CORE AREA CALCULATION



GROUND FLOOR & ENTRANCE LOBBY & CORE SERVICES AREA CALCULATION 3BHK LARGE BLOCK-T2

ITEM	WIDTH	LENGTH	NO	AREA (SQ M)
1	3.118	9.000	1	28.062
2	1.400	9.000	1	12.600
3	2.818	9.000	1	25.362
4	1.700	9.000	1	15.300
5	3.700	9.000	1	33.300
6	19.375	2.227	1	43.159
7	2.142	4.459	1	9.552
8	4.459	7.291	1	32.500
9	3.700	3.279	1	12.129
10	3.000	9.000	1	27.000
11	3.246	9.000	1	29.214
12	6.616	9.000	1	59.544
13	9.000	1.530	1	13.770
TOTAL				271.223

GROUND FLOOR LOBBY & CORE AREA DEDUCTIONS BLOCK-T2



For NEXGEN INFRACON PVT. LTD.
Authorized Signatory

[REVISED PLAN]

REVISED SUBMISSION DRAWING FOR GROUP HOUSING AT GH-01/A, SECTOR 78, NOIDA, U.P.

OWNER: NEXGEN INFRACON PVT. LTD. B-66, FIRST FLOOR, VIVEK VIHAR, NEW DELHI - 110095.

BUILDING TYPE: 3 BHK LARGE
BUILDING NAME: SIENA, MANTOVA

SCALE: 1:100
DATE: DEC, 2015
OWNER'S SIGNATURE:

DRG. NO. SD - 16
ARCHITECT'S SIGNATURE:

TITLE: STILT FLOOR PLAN AND AREA CALCULATION
THIS DRAWING IS THE PROPERTY OF NEXGEN INFRACON PVT. LTD. AND SHALL NOT BE USED, COPIED OR REPRODUCED WITHOUT THEIR WRITTEN PERMISSION.

ARCHITECTS: Poojash Chaudhary, Director of Architecture, Member Council of Architects, Regd No. 2482/14192