

FIRST / TYPICAL FLOOR: F.A.R AREA  
1,3,5,7,9,11,13,15,17,19,21,23,25,27,29,31  
CALCULATION CHART 4BHK LARGE BLOCK- T4

AREA DETAILS FOR TYPICAL FLOOR			
4BHK LARGE BLOCK T4			
ITEM	AREA	NO.	AREA (SQ M)
TYPE - 1 TYP. FLOOR	345.88	2	691.76
TYP. FLOOR CORE AREA	56.63	1	56.63
<b>TOTAL</b>			<b>748.39</b>
AREA DETAILS FOR TYP. FLOOR (SERVICES) F.A.R			
TYPE - 1 TYP. FLOOR	14.472	2	28.944
TYP. FLOOR CORE AREA	48.240	1	48.240
<b>TOTAL</b>			<b>77.184</b>

TYPICAL FLOOR: F.A.R AREA  
2,4,6,8,10,12,14,16,18,20,22,24,26,28,30  
CALCULATION CHART 4BHK LARGE BLOCK- T4

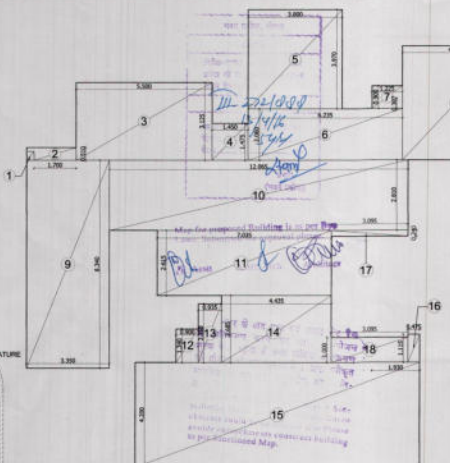
AREA DETAILS FOR TYPICAL FLOOR			
4BHK LARGE BLOCK T4			
ITEM	AREA	NO.	AREA (SQ M)
TYPE - 2 TYP. FLOOR	347.80	2	695.60
TYP. FLOOR CORE AREA	56.63	1	56.63
<b>TOTAL</b>			<b>752.23</b>
AREA DETAILS FOR TYP. FLOOR (SERVICES) F.A.R			
TYPE - 2 TYP. FLOOR	14.472	2	28.944
TYP. FLOOR CORE AREA	48.240	1	48.240
<b>TOTAL</b>			<b>77.184</b>

STILT FLOOR: F.A.R AREA CALCULATION CHART 4BHK BLOCK- T4

AREA DETAILS FOR GROUND FLOOR (F.A.R)			
BLOCK- T4			
ITEM	AREA	NO.	AREA (SQ M)
GROUND FLOOR EXT. & CORE	101.48	1	101.48
<b>TOTAL</b>			<b>101.48</b>
AREA DETAILS FOR 10% SERVICES F.A.R			
LIFT LOBBY	65.620	1	65.620
S.B.WE'L.T. STAIRCASE	15.34	1	15.34
<b>TOTAL</b>			<b>80.960</b>

STILT FLOOR PLAN

GROUND COVERAGE AREA CALCULATION CHART			
SERVICES F.A.R			
ITEM	AREA	NO.	AREA (SQ M)
ENTRANCE CORE AREA	27.08	1	27.08
FIRST FLOOR FAR	58.08	1	58.08
FIRST FLOOR SERVICES FAR	15.34	1	15.34
<b>TOTAL</b>			<b>100.50</b>



STILT FLOOR ENTRANCE LOBBY CORE AREA CALCULATION DETAIL

STILT FLOOR ENTRANCE LOBBY CORE SERVICES AREA CALCULATION CHART

GROUND FLOOR ENTRANCE LOBBY SERVICES AREA DETAIL IN F.A.R				
ITEM	WIDTH	LENGTH	NO.	AREA(SQ M)
LB	5.900	X	3.090	= 18.366 0.000
LB1	2.685	X	2.685	= 7.205 0.000
LB2	2.685	X	2.685	= 7.205 0.000
LB3	3.100	X	5.600	= 17.360 0.000
SB	1.580	X	1.360	= 2.149 0.000
SB1	1.190	X	1.360	= 1.618 0.000
SB2	1.190	X	1.360	= 1.618 0.000
SB3	1.190	X	1.360	= 1.618 0.000
SB4	0.785	X	1.225	= 0.962 0.000
SB5	0.785	X	1.225	= 0.962 0.000
SB6	0.785	X	1.225	= 0.962 0.000
SB7	0.785	X	1.225	= 0.962 0.000
SB8	0.785	X	1.225	= 0.962 0.000
SB9	0.785	X	1.225	= 0.962 0.000
SB10	0.785	X	1.225	= 0.962 0.000
SB11	0.785	X	1.225	= 0.962 0.000
SB12	0.785	X	1.225	= 0.962 0.000
SB13	0.785	X	1.225	= 0.962 0.000
SB14	0.785	X	1.225	= 0.962 0.000
SB15	0.785	X	1.225	= 0.962 0.000
SB16	0.785	X	1.225	= 0.962 0.000
SB17	0.785	X	1.225	= 0.962 0.000
SB18	0.785	X	1.225	= 0.962 0.000
SB19	0.785	X	1.225	= 0.962 0.000
SB20	0.785	X	1.225	= 0.962 0.000
SB21	0.785	X	1.225	= 0.962 0.000
SB22	0.785	X	1.225	= 0.962 0.000
SB23	0.785	X	1.225	= 0.962 0.000
SB24	0.785	X	1.225	= 0.962 0.000
SB25	0.785	X	1.225	= 0.962 0.000
SB26	0.785	X	1.225	= 0.962 0.000
SB27	0.785	X	1.225	= 0.962 0.000
SB28	0.785	X	1.225	= 0.962 0.000
SB29	0.785	X	1.225	= 0.962 0.000
SB30	0.785	X	1.225	= 0.962 0.000
SB31	0.785	X	1.225	= 0.962 0.000
SB32	0.785	X	1.225	= 0.962 0.000
SB33	0.785	X	1.225	= 0.962 0.000
SB34	0.785	X	1.225	= 0.962 0.000
SB35	0.785	X	1.225	= 0.962 0.000
SB36	0.785	X	1.225	= 0.962 0.000
SB37	0.785	X	1.225	= 0.962 0.000
SB38	0.785	X	1.225	= 0.962 0.000
SB39	0.785	X	1.225	= 0.962 0.000
SB40	0.785	X	1.225	= 0.962 0.000
SB41	0.785	X	1.225	= 0.962 0.000
SB42	0.785	X	1.225	= 0.962 0.000
SB43	0.785	X	1.225	= 0.962 0.000
SB44	0.785	X	1.225	= 0.962 0.000
SB45	0.785	X	1.225	= 0.962 0.000
SB46	0.785	X	1.225	= 0.962 0.000
SB47	0.785	X	1.225	= 0.962 0.000
SB48	0.785	X	1.225	= 0.962 0.000
SB49	0.785	X	1.225	= 0.962 0.000
SB50	0.785	X	1.225	= 0.962 0.000
SB51	0.785	X	1.225	= 0.962 0.000
SB52	0.785	X	1.225	= 0.962 0.000
SB53	0.785	X	1.225	= 0.962 0.000
SB54	0.785	X	1.225	= 0.962 0.000
SB55	0.785	X	1.225	= 0.962 0.000
SB56	0.785	X	1.225	= 0.962 0.000
SB57	0.785	X	1.225	= 0.962 0.000
SB58	0.785	X	1.225	= 0.962 0.000
SB59	0.785	X	1.225	= 0.962 0.000
SB60	0.785	X	1.225	= 0.962 0.000
SB61	0.785	X	1.225	= 0.962 0.000
SB62	0.785	X	1.225	= 0.962 0.000
SB63	0.785	X	1.225	= 0.962 0.000
SB64	0.785	X	1.225	= 0.962 0.000
SB65	0.785	X	1.225	= 0.962 0.000
SB66	0.785	X	1.225	= 0.962 0.000
SB67	0.785	X	1.225	= 0.962 0.000
SB68	0.785	X	1.225	= 0.962 0.000
SB69	0.785	X	1.225	= 0.962 0.000
SB70	0.785	X	1.225	= 0.962 0.000
SB71	0.785	X	1.225	= 0.962 0.000
SB72	0.785	X	1.225	= 0.962 0.000
SB73	0.785	X	1.225	= 0.962 0.000
SB74	0.785	X	1.225	= 0.962 0.000
SB75	0.785	X	1.225	= 0.962 0.000
SB76	0.785	X	1.225	= 0.962 0.000
SB77	0.785	X	1.225	= 0.962 0.000
SB78	0.785	X	1.225	= 0.962 0.000
SB79	0.785	X	1.225	= 0.962 0.000
SB80	0.785	X	1.225	= 0.962 0.000
SB81	0.785	X	1.225	= 0.962 0.000
SB82	0.785	X	1.225	= 0.962 0.000
SB83	0.785	X	1.225	= 0.962 0.000
SB84	0.785	X	1.225	= 0.962 0.000
SB85	0.785	X	1.225	= 0.962 0.000
SB86	0.785	X	1.225	= 0.962 0.000
SB87	0.785	X	1.225	= 0.962 0.000
SB88	0.785	X	1.225	= 0.962 0.000
SB89	0.785	X	1.225	= 0.962 0.000
SB90	0.785	X	1.225	= 0.962 0.000
SB91	0.785	X	1.225	= 0.962 0.000
SB92	0.785	X	1.225	= 0.962 0.000
SB93	0.785	X	1.225	= 0.962 0.000
SB94	0.785	X	1.225	= 0.962 0.000
SB95	0.785	X	1.225	= 0.962 0.000
SB96	0.785	X	1.225	= 0.962 0.000
SB97	0.785	X	1.225	= 0.962 0.000
SB98	0.785	X	1.225	= 0.962 0.000
SB99	0.785	X	1.225	= 0.962 0.000
SB100	0.785	X	1.225	= 0.962 0.000
SB101	0.785	X	1.225	= 0.962 0.000
SB102	0.785	X	1.225	= 0.962 0.000
SB103	0.785	X	1.225	= 0.962 0.000
SB104	0.785	X	1.225	= 0.962 0.000
SB105	0.785	X	1.225	= 0.962 0.000
SB106	0.785	X	1.225	= 0.962 0.000
SB107	0.785	X	1.225	= 0.962 0.000
SB108	0.785	X	1.225	= 0.962 0.000
SB109	0.785	X	1.225	= 0.962 0.000
SB110	0.785	X	1.225	= 0.962 0.000
SB111	0.785	X	1.225	= 0.962 0.000
SB112	0.785	X	1.225	= 0.962 0.000
SB113	0.785	X	1.225	= 0.962 0.000
SB114	0.785	X	1.225	= 0.962 0.000
SB115	0.785	X	1.225	= 0.962 0.000
SB116	0.785	X	1.225	= 0.962 0.000
SB117	0.785	X	1.225	= 0.962 0.000
SB118	0.785	X	1.225	= 0.962 0.000
SB119	0.785	X	1.225	= 0.962 0.000
SB120	0.785	X	1.225	= 0.962 0.000
SB121	0.785	X	1.225	= 0.962 0.000
SB122	0.785	X	1.225	= 0.962 0.000
SB123	0.785	X	1.225	= 0.962 0.000
SB124	0.785	X	1.225	= 0.962 0.000
SB125	0.785	X	1.225	= 0.962 0.000
SB126	0.785	X	1.225	= 0.962 0.000
SB127	0.785	X	1.225	= 0.962 0.000
SB128	0.785	X	1.225	= 0.962 0.000
SB129	0.785	X	1.225	= 0.962 0.000
SB130	0.785	X	1.225	= 0.962 0.000
SB131	0.785	X	1.225	= 0.962 0.000
SB132	0.785	X	1.225	= 0.962 0.000
SB133	0.785	X	1.225	= 0.962 0.000
SB134	0.785	X	1.225	= 0.962 0.000
SB135	0.785	X	1.225	= 0.962 0.000
SB136	0.785	X	1.225	= 0.962 0.000
SB137	0.785	X	1.225	= 0.962 0.000
SB138	0.785	X	1.225	= 0.962 0.000
SB139	0.785	X	1.225	= 0.962 0.000
SB140	0.785	X	1.225	= 0.962 0.000
SB141	0.785	X	1.225	= 0.962 0.000
SB142	0.785	X	1.225	= 0.962 0.000
SB143	0.785	X	1.225	= 0.962 0.000
SB144	0.785	X	1.225	= 0.962 0.000
SB145	0.785	X	1.225	= 0.962 0.000
SB146	0.785	X	1.225	= 0.962 0.000
SB147	0.785	X	1.225	= 0.962 0.000
SB148	0.785	X	1.225	= 0.962 0.000
SB149	0.785	X	1.225	= 0.962 0.000
SB150	0.785	X	1.225	= 0.962 0.000
SB151	0.785	X	1.225	= 0.962 0.000
SB152	0.785	X	1.225	= 0.962 0.000
SB153	0.785	X	1.225	= 0.962 0.000
SB154	0.785	X	1.225	= 0.962 0.000
SB155	0.785	X	1.225	= 0.962 0.000
SB156	0.785			