

LVL +89070
OVER HEAR TANK TOP LVL

LVL +80870
MUMTY LEVEL

LVL +78000
TERRACE FLOOR

LVL +76550
24th FLOOR

LVL +71900
23rd FLOOR

LVL +68850
22nd FLOOR

LVL +65800
21st FLOOR

LVL +62750
20th FLOOR

LVL +59700
19th FLOOR

LVL +56650
18th FLOOR

LVL +53600
17th FLOOR

LVL +50550
16th FLOOR

LVL +47500
15th FLOOR

LVL +44450
14th FLOOR

LVL +41400
13th FLOOR

LVL +38350
12th FLOOR

LVL +35300
11th FLOOR

LVL +32250
10th FLOOR

LVL +29200
9th FLOOR

LVL +26150
8th FLOOR

LVL +23100
7th FLOOR

LVL +20050
6th FLOOR

LVL +17000
5th FLOOR

LVL +13950
4th FLOOR

LVL +10900
3rd FLOOR

LVL +7850
2nd FLOOR

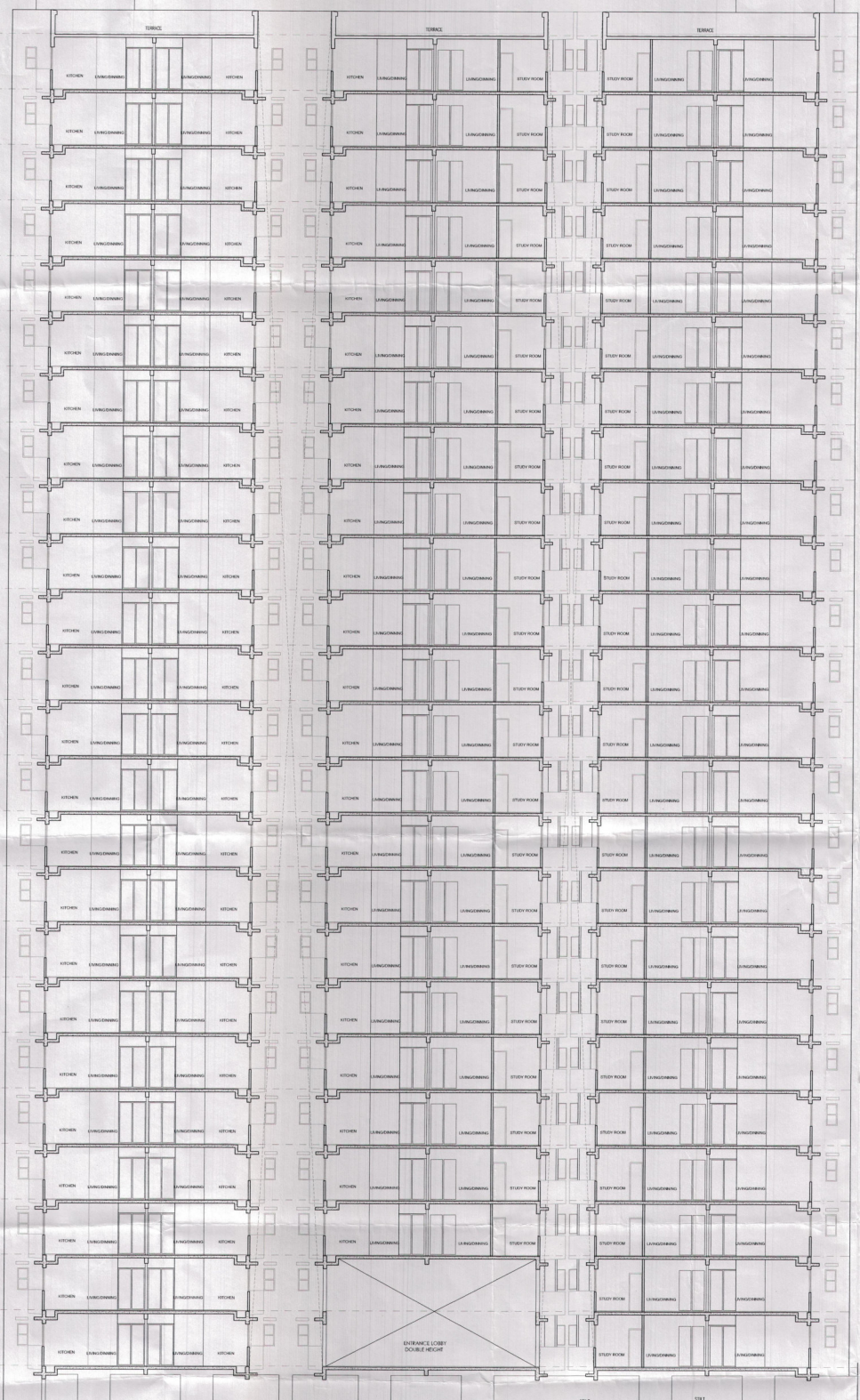
LVL +4800
1st FLOOR

LVL +1750
STILT FLOOR

INTERNAL ROAD LVL +1600

LVL -2100
UPPER BASEMENT

LVL -5700
LOWER BASEMENT



SECTION 1-1

APPROVED
Date: 12/11/2016
5 Year

Architects
GIAN P. MATHUR AND ASSOCIATES (P) LTD.
C-55, East Of Kailash, New Delhi-110065
T: +919959911746/99512 E: gpmad@airtelmail.in W: www.gpmad.com

Client
M/S MAHAGUN (INDIA) PVT. LTD

Project Title
PROPOSED GROUP HOUSING AT PLOT
NO.GH-04 SECTOR -16C GREATER NOIDA.

Drawing Title
TOWER 32 (SPRING WOOD)
SECTION 1-1

Status: SUBMISSION DRAWING

for MAHAGUN INDIA PVT. LTD.
OWNER'S SIGN
GIAN P. MATHUR
ARCHITECT
B. Arch., M.C.A., I.I.A.
C.K.No. 5017/03
ARCHITECT'S SIGN

Date: Scale: Drawing No. 1:100 MWS/7-32-11