

PROJECT: Proposed Commercial Complex for BIDA (B+G+3)

AGENCY

KISHORE KAPOOR ARCHITECT
 Council of Architecture Reg. No. CA/87/10966

SUB TITLE: Proposed Shia Complex For BIDA, Bhadohi

DRG. TITLE: EXTERNAL ELECTRICAL PLAN
 ELECTRICAL SUPPLY PLAN

PROJECT MANAGER:-

DRG. NO. :- ELE/EEP-1

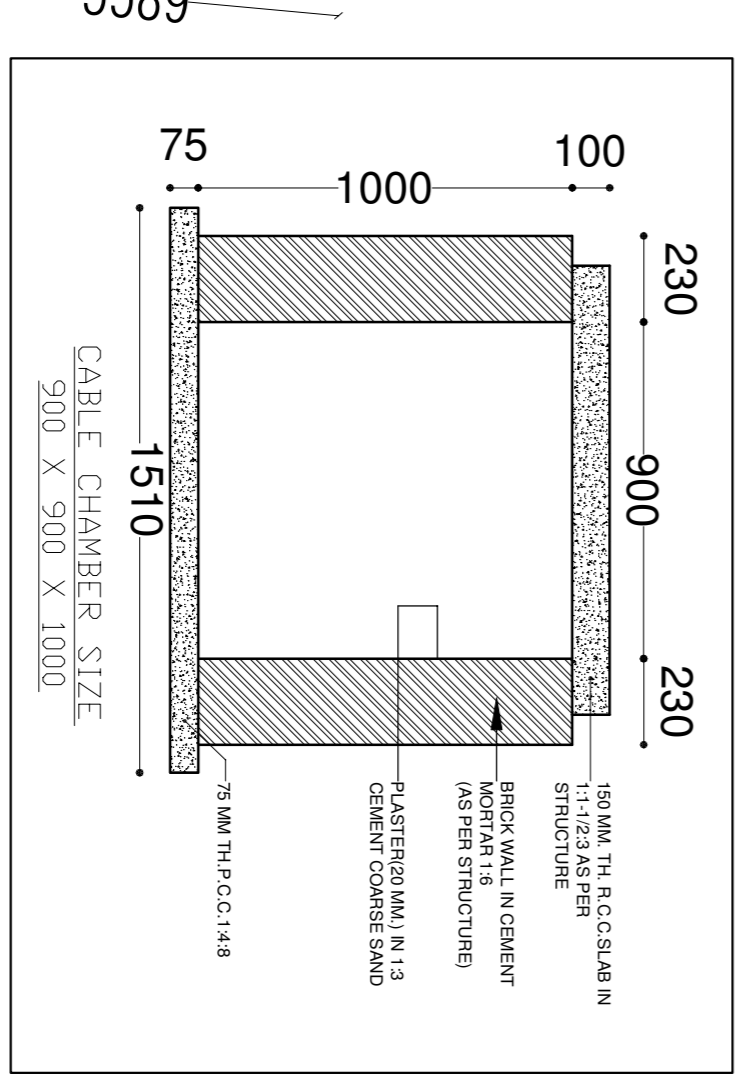
SCALE:- DRN BY:- SHIVAM

DATE:- CHECKED BY:- O.P. SHAH

ARCHITECT:- ARCHITECTS KAPOOR AND ASSOCIATES

Flat no.A, Block no.1, Didwania Square, Mahmooorganj, Varanasi Ph- 3561571, Cell 98390-89413

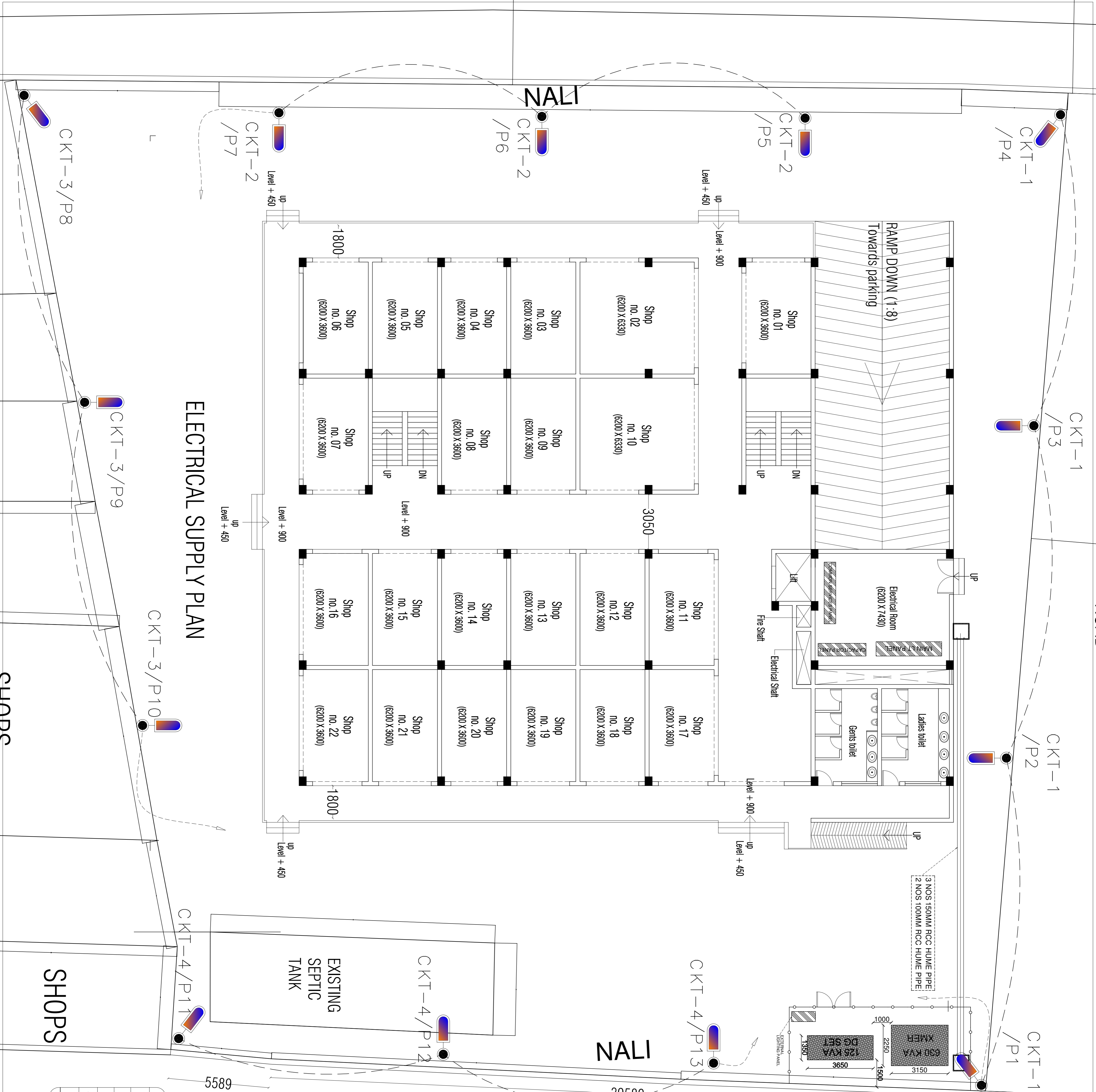
SHRH & PRNTT
 CONSULTING ENGINEERS (P) LTD
 14/15, PATEL NAGAR, KANUNGI, VARANASI, U.P.
 Email: shrah_prntt@yahoo.com, Web: www.shrahprnttconsultingengineers.com



LEGEND:-

1.	7.0M GI OCTAGONAL SUITABLE FOR 45W TO 50W
2.	UG CABLE
3.	RCC HUMME PIPE
4.	ELECTRICAL MAN HOLE
5.	CABLE TRENCH

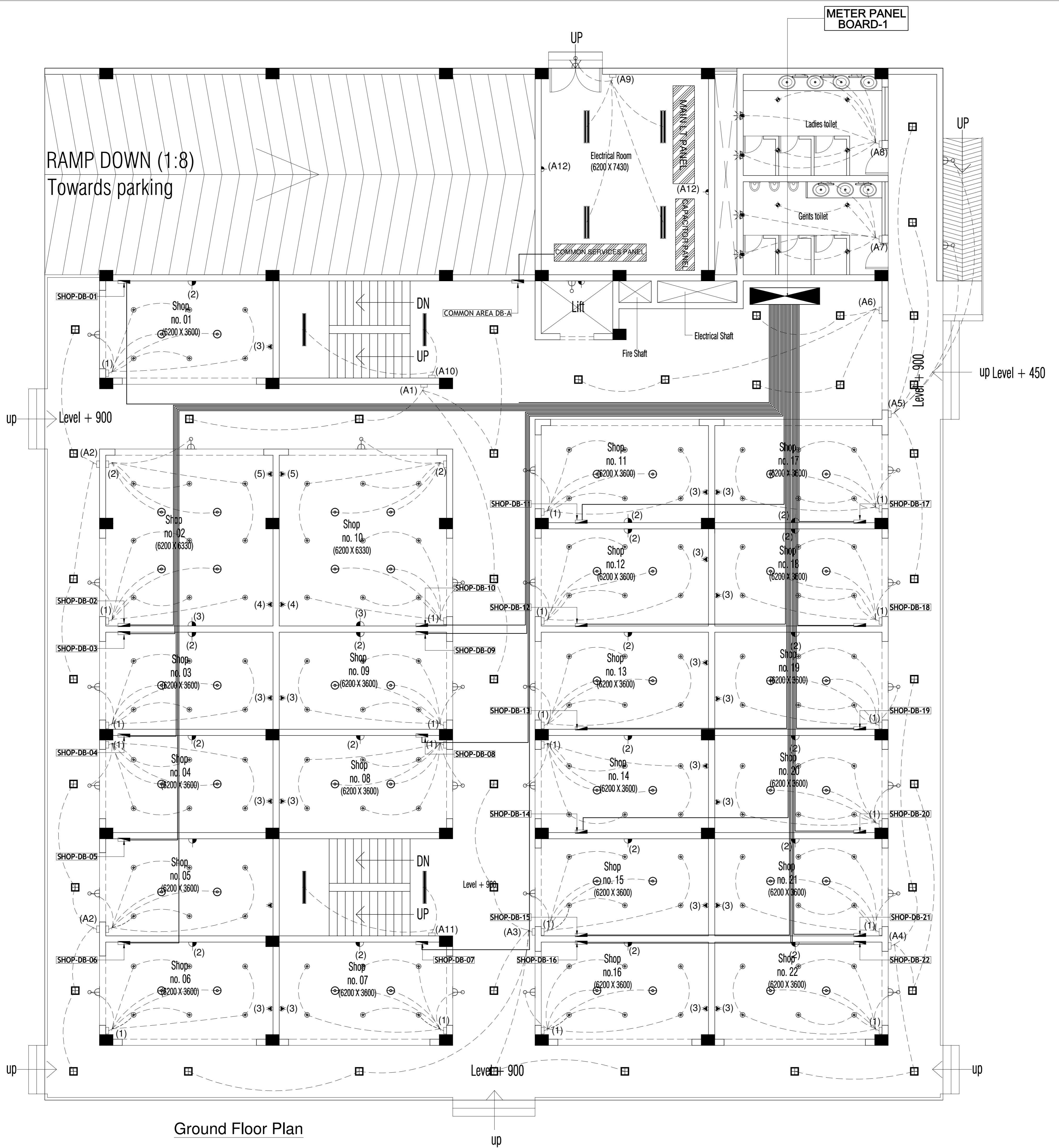
ELECTRICAL SUPPLY PLAN



SHOPS

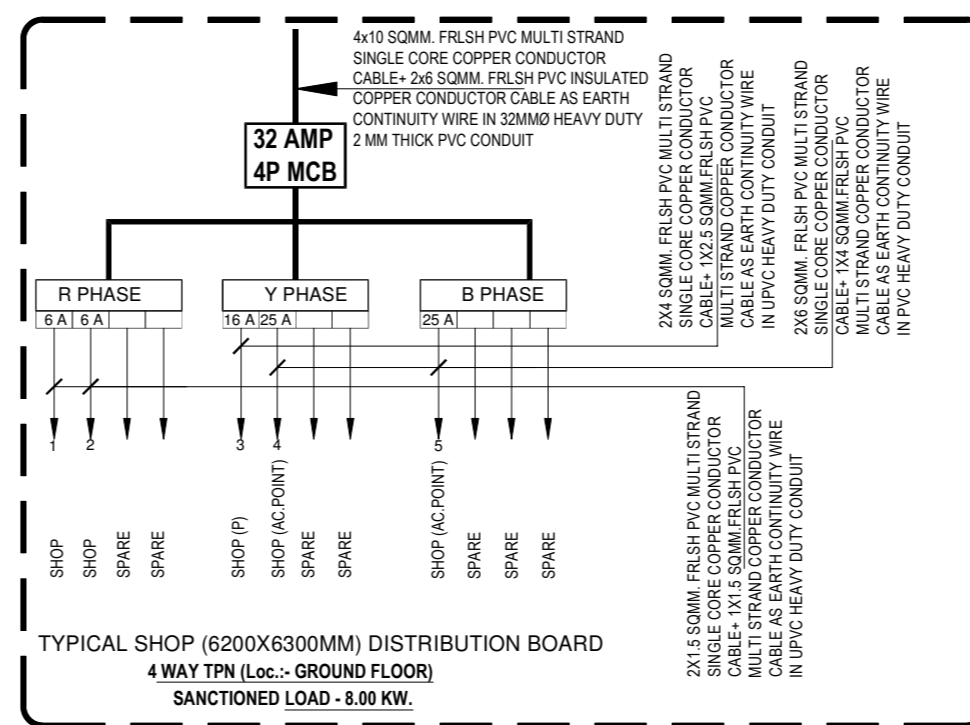
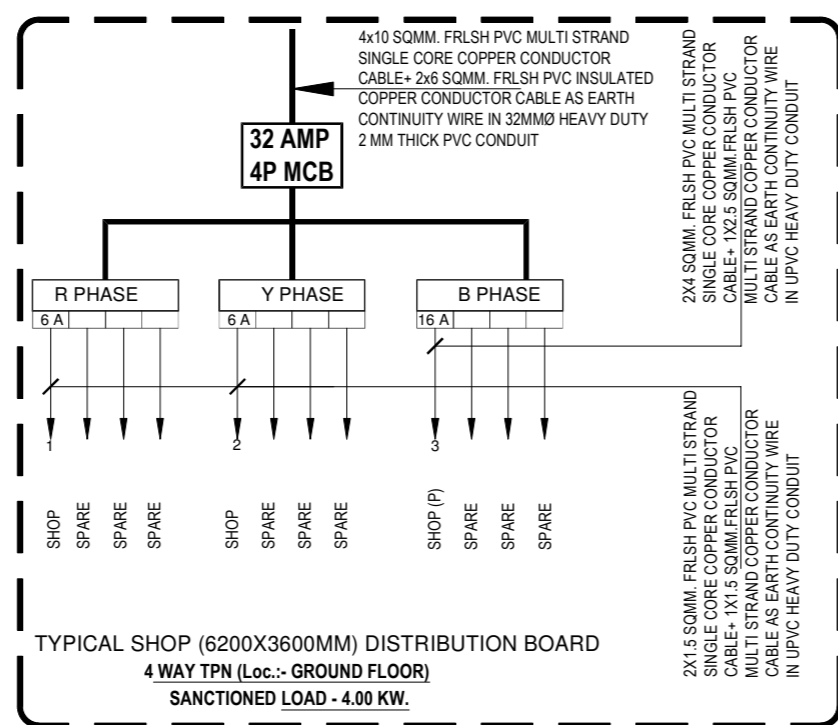
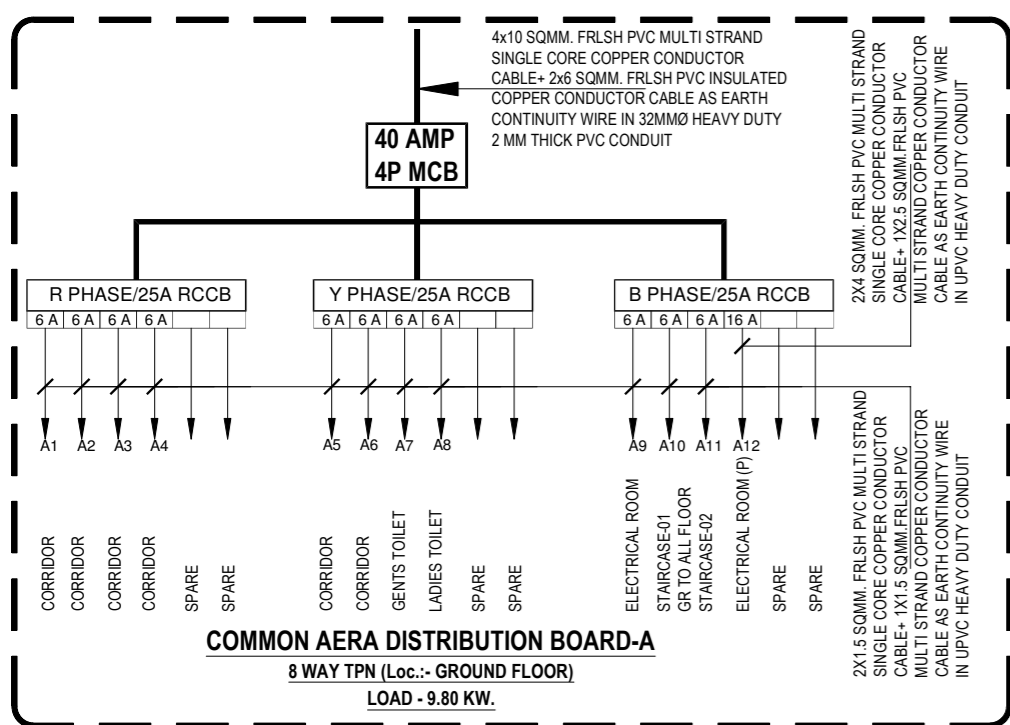
SHOPS

SHOPS



Ground Floor Plan

ELECTRICAL SUPPLY PLAN



LEGEND:- ELECTRICAL

SYMBOL	DESCRIPTION	HEIGHT
	2X22W LED TUBE LIGHT FIXTURE	IN CEILING
	MIRROR LIGHT	AS/SITE
	1X22W LED TUBE LIGHT FIXTURE	IN CEILING
	6 W LED DOWN LIGHT	IN CEILING
	BULK HEAD	AS/SITE
	SWITCH BOARD	1100
	10W RECESS/SURFACE MOUNTING LED	IN CEILING
	25-AMP PLUG POINT (AC)	AS/SITE
	FAN BOX	AS/SITE
	LIGHT BOX	AS/SITE
	6-AMP PLUG POINT	AS/SITE
	6/16-AMP POWER POINT	AS/SITE
	DISTRIBUTION BOARD	1200 BOTTOM OF DB

PROJECT:
Proposed Shia Complex
For BIDA, Bhadohi

AGENCY:
SHEET TITLE:-
GROUND FLOOR
ELECTRICAL SUPPLY PLAN

DWG. TITLE:-
COMMERCIAL BUILDING
(ELECTRICAL)
DATE:
DEC.-2022

SCALE:
A1:75
DRG. NO.:

DRN BY:
S.TRIPATHI
DRN BY:
A.ATIQUE
CHECKED BY:
D.P. SHAH

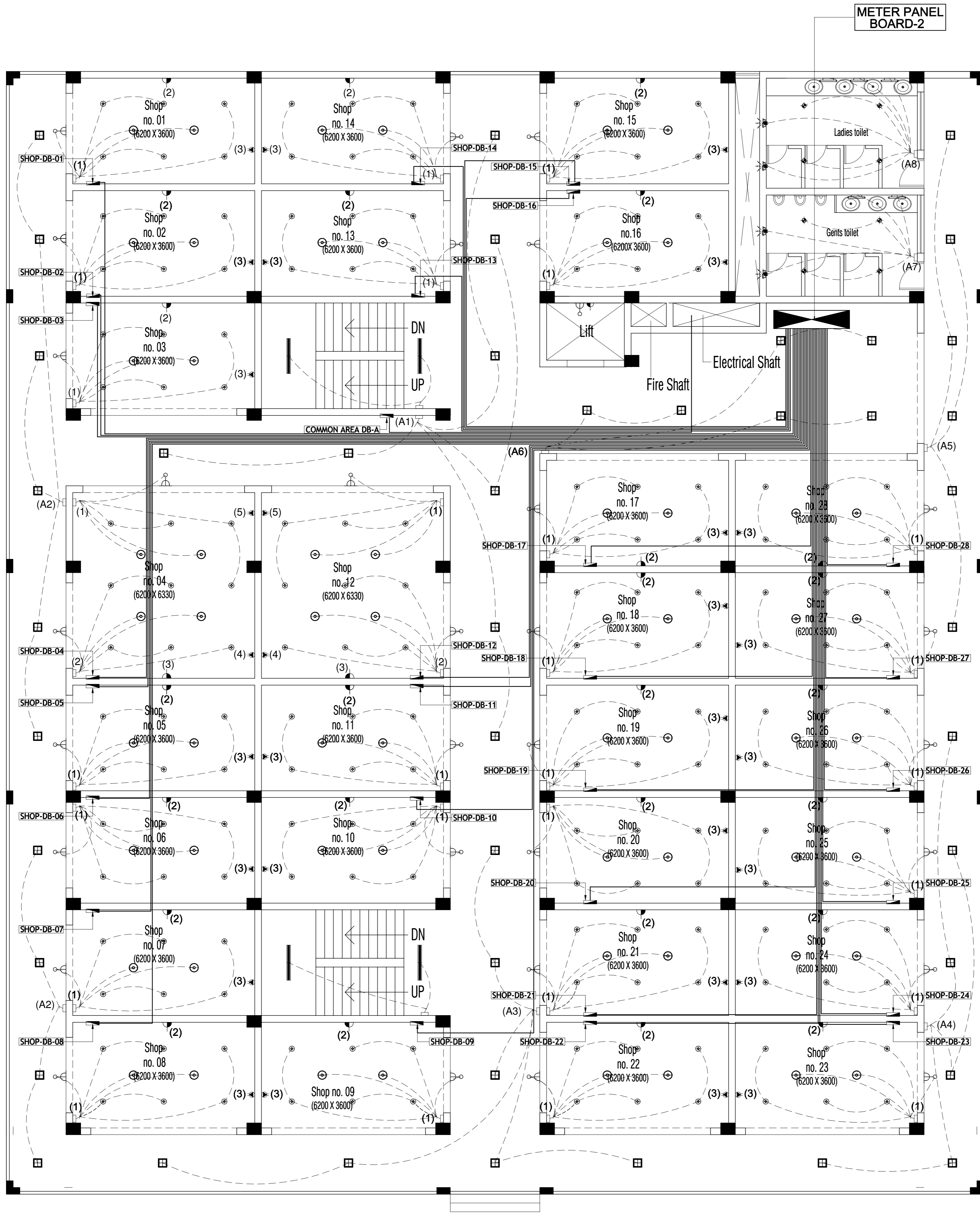
Revision:



ARCHITECTURAL CONSULTANTS:
KAPOOR AND ASSOCIATES
Flat no.3, Block no.1,
Didwania Square,
Mahmoorganj, Varanasi
Ph- 3561571,
Cell 98390-89413

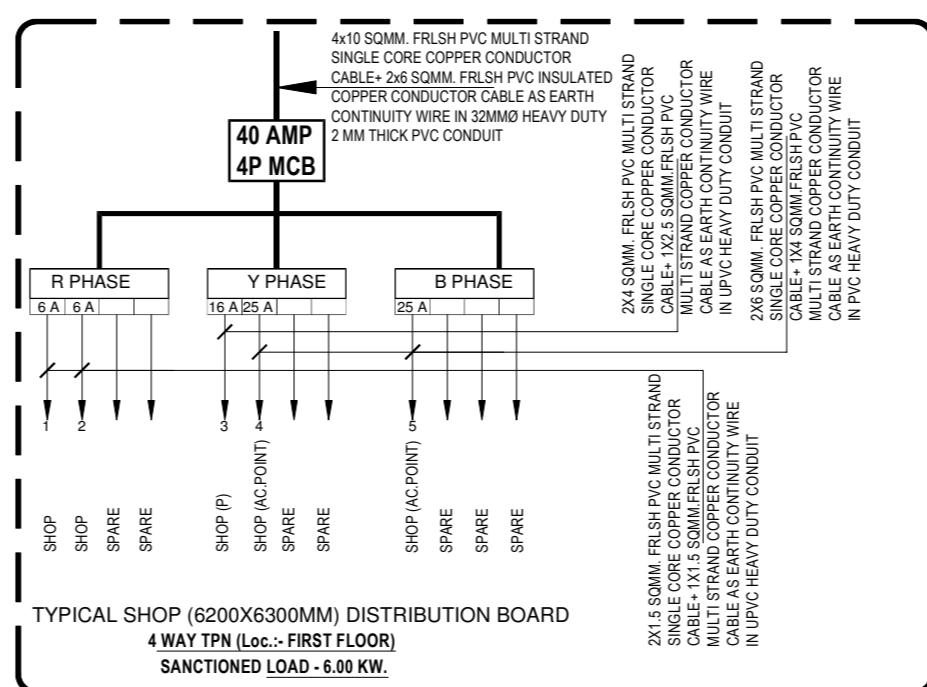
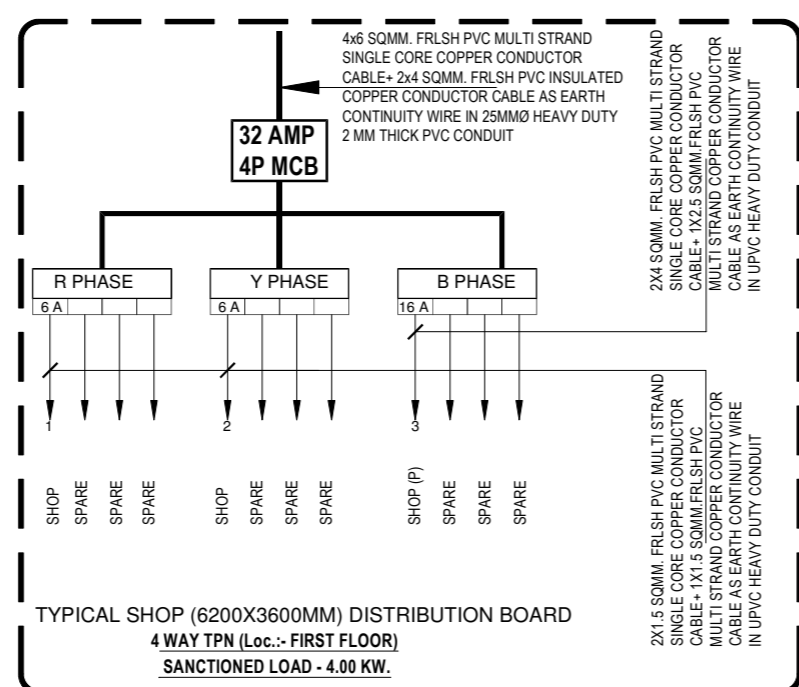
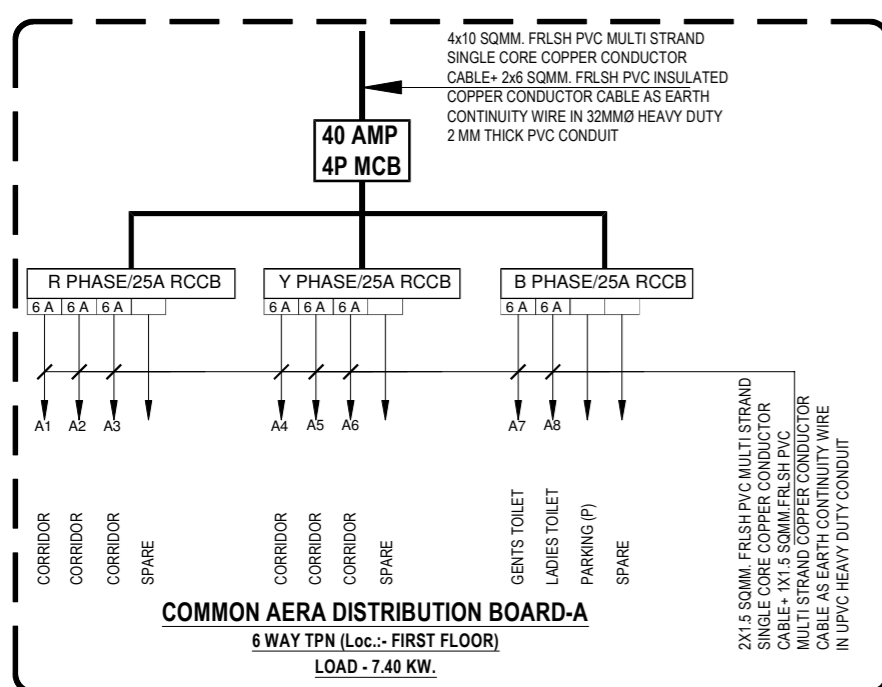
SERVICES CONSULTANTS:

SHAH & PANT
CONSULTING ENGINEERS (P) LTD.
AN ISO 9001:2008 COMPANY
4th Floor, HALWASIYA COURT, HAZRATGANJ, LUCKNOW (U.P.)
Tel: No. 0522-2336025, Fax: 0522-2336026, Cell: 9839013286, 9419027719
Email: shah_pant@yahoo.co.in, Web: www.shahpantconsultingengineers.com



First Floor Plan

ELECTRICAL SUPPLY PLAN



LEGEND:- ELECTRICAL		
SYMBOL	DESCRIPTION	HEIGHT
	2X22W LED TUBE LIGHT FIXTURE	IN CEILING
	MIRROR LIGHT	AS/SITE
	1X22W LED TUBE LIGHT FIXTURE	IN CEILING
	6 W LED DOWN LIGHT	IN CEILING
	BULK HEAD	AS/SITE
	SWITCH BOARD	1100
	10W RECESS/SURFACE MOUNTING LED	IN CEILING
	25-AMP PLUG POINT (AC)	AS/SITE
	FAN BOX	AS/SITE
	LIGHT BOX	AS/SITE
	6-AMP PLUG POINT	AS/SITE
	6/16-AMP POWER POINT	AS/SITE
	DISTRIBUTION BOARD	1200 BOTTOM OF DB

PROJECT:
Proposed Shia Complex
For BIDA, Bhadohi

AGENCY:
SHEET TITLE:-
FIRST FLOOR
ELECTRICAL SUPPLY PLAN

DWG. TITLE:-
COMMERCIAL BUILDING
(ELECTRICAL)
DATE:
DEC.-2022

SCALE:
A1:75
DRN BY:
S.TRIPATHI
DRN BY:
A.ATIQUE
CHECKED BY:
D.P. SHAH

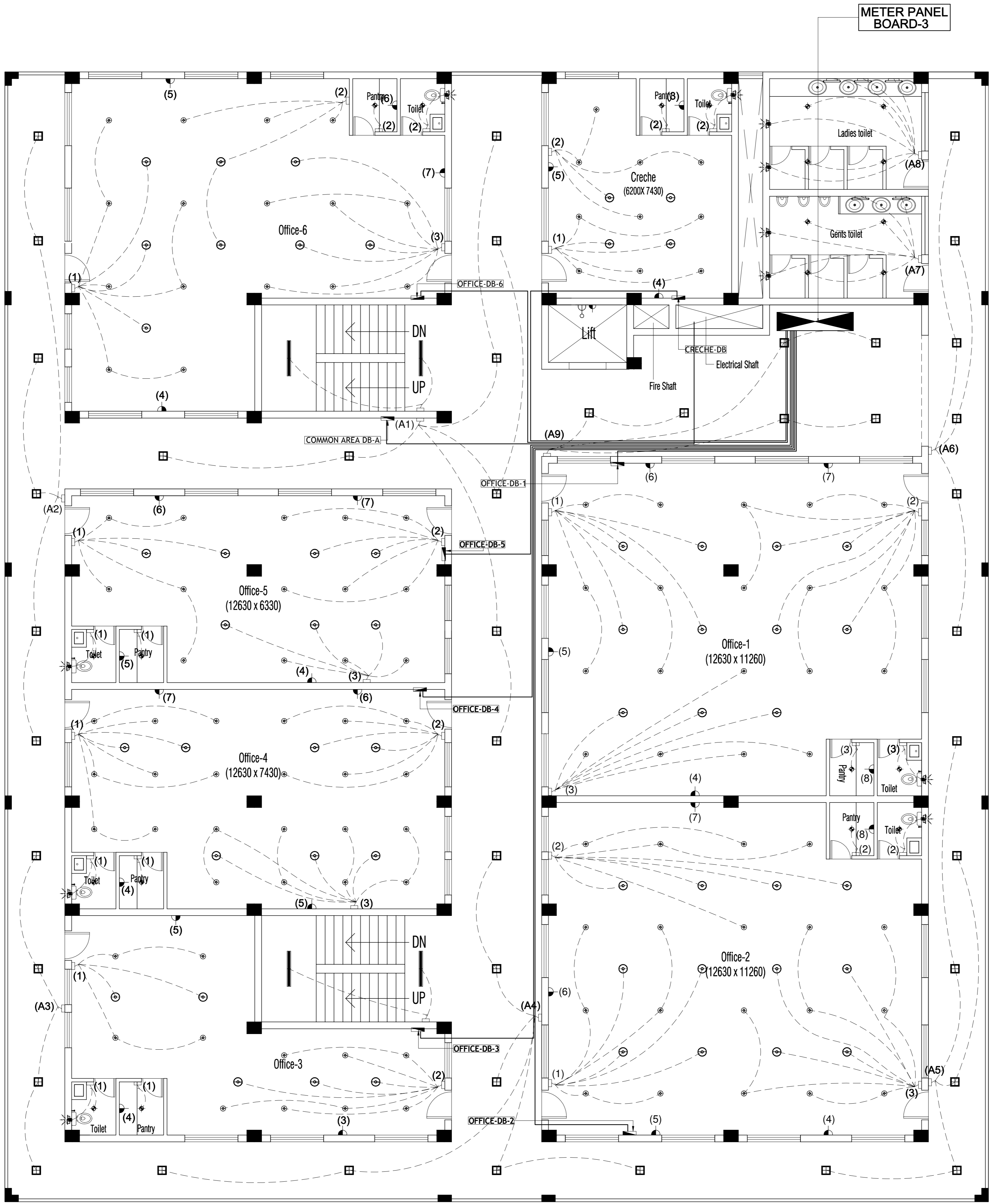
Revision:

KISHORE KAPOOR
ARCHITECT
Council of Architecture
Reg. No. CA/87/1096G

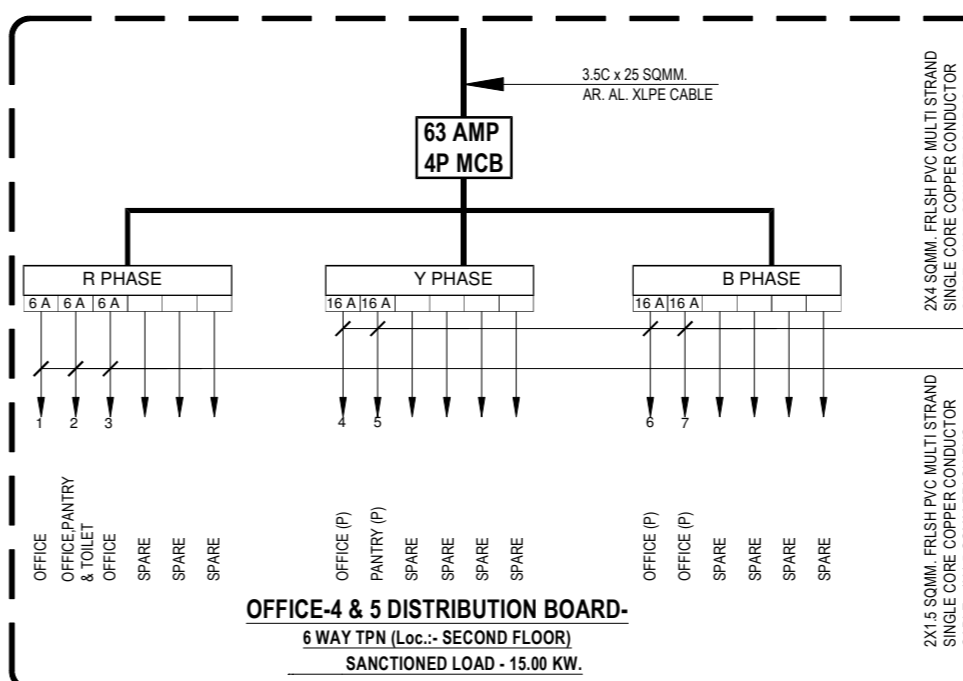
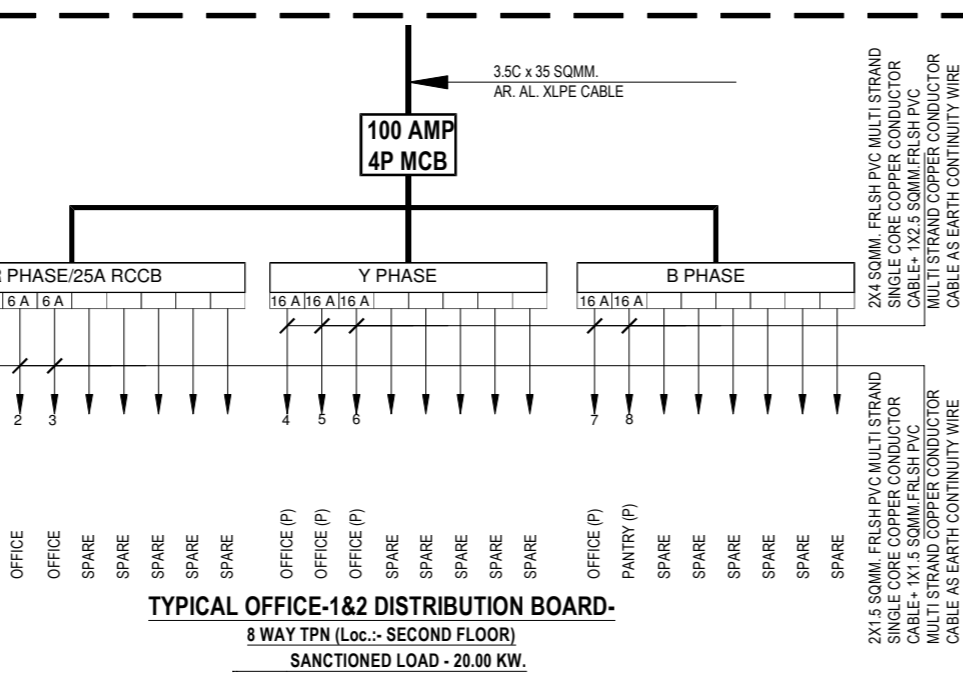
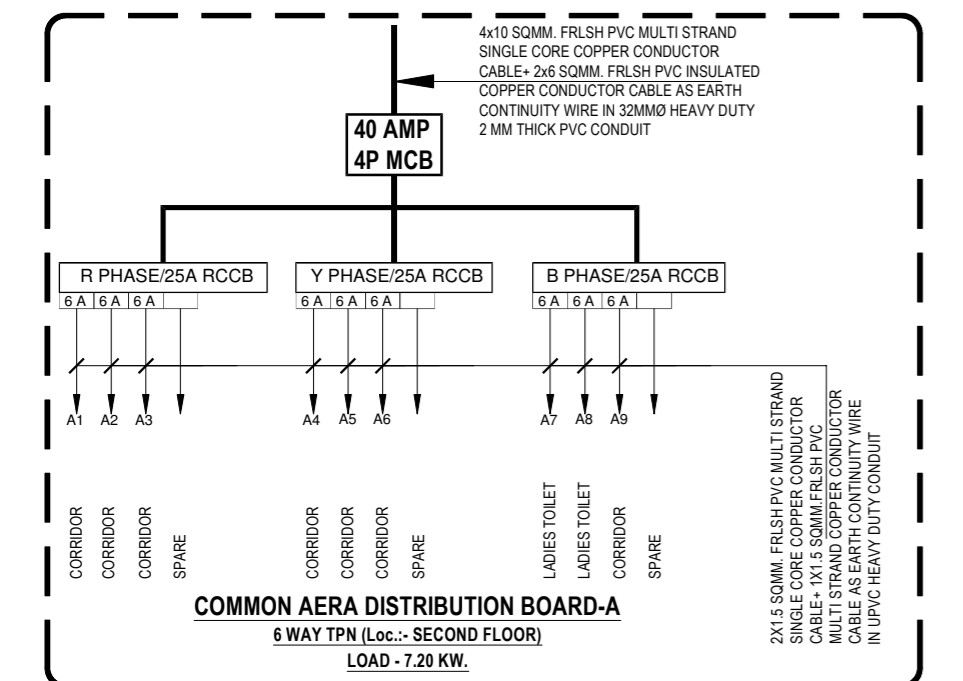
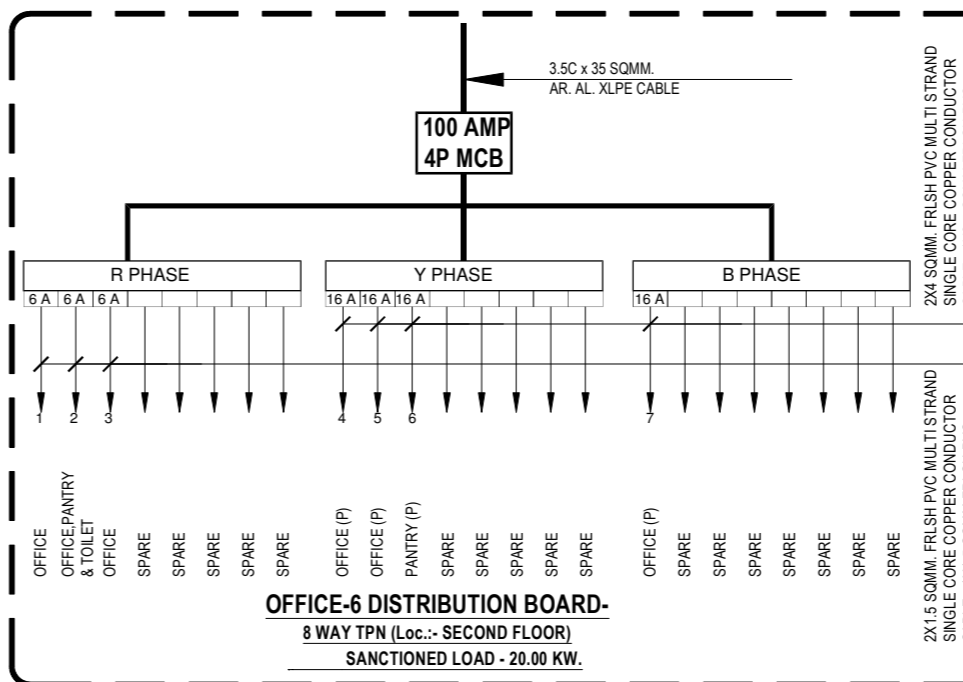
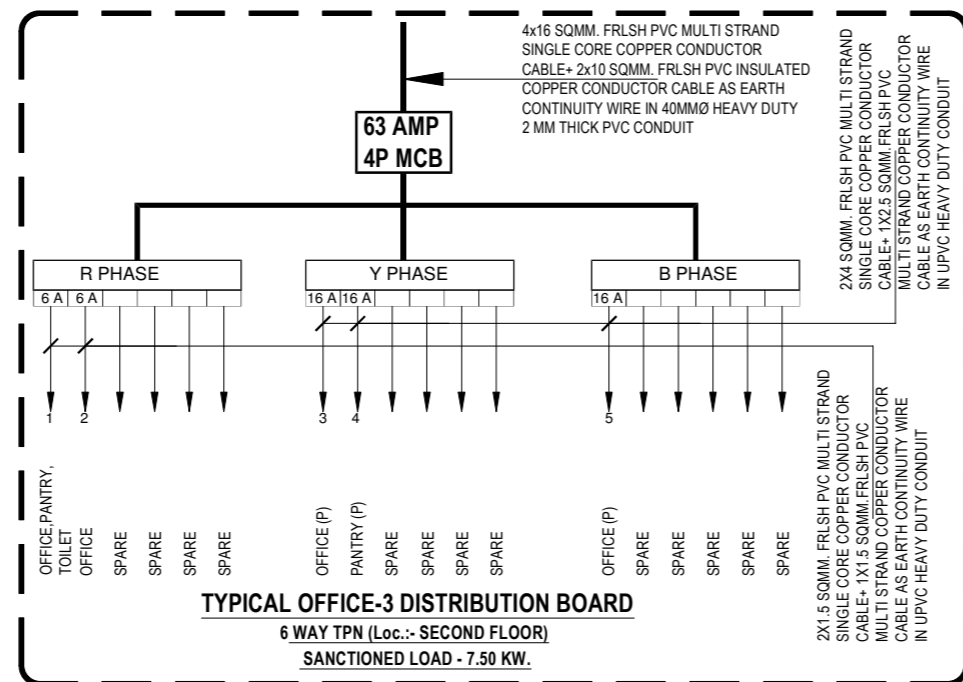
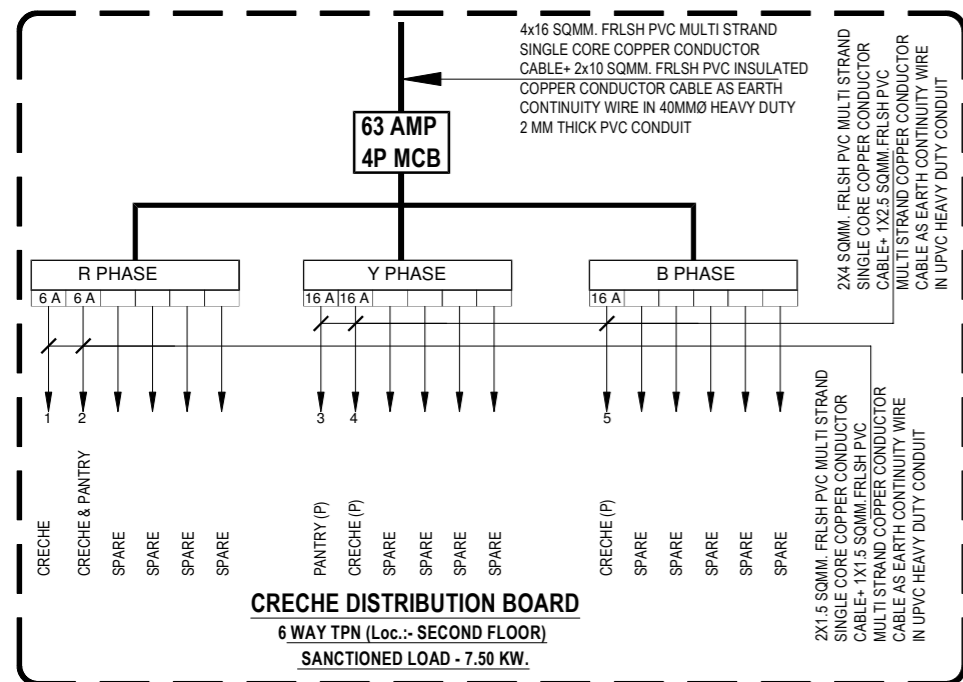
ARCHITECTURAL CONSULTANTS:
KAPOOR AND ASSOCIATES
Flat no.3, Block no.1,
Didwania Square,
Mahmoorganj, Varanasi
Ph- 3561571,
Cell 98390-89413

SERVICES CONSULTANTS:

SHAH & PANT
CONSULTING ENGINEERS (P) LTD.
AN ISO 9001:2008 COMPANY
L-4th Floor, HALWASIYA COURT, HAZRATGANJ, LUCKNOW (U.P.)
Tel: No.- 0522-233625, Fax: 0522-233626, C-01: 0522013286, 9415027719
Email: shah_pant@yahoo.co.in, Web: www.shahpantconsultingengineers.com



Second Floor Plan ELECTRICAL SUPPLY PLAN



LEGEND:- ELECTRICAL

SYMBOL	DESCRIPTION	HEIGHT
⊠	2X22W LED TUBE LIGHT FIXTURE	IN CEILING
⊠	MIRROR LIGHT	AS/SITE
⊠	1X22W LED TUBE LIGHT FIXTURE	IN CEILING
⊠	6 W LED DOWN LIGHT	IN CEILING
⊠	BULK HEAD	AS/SITE
⊠	SWITCH BOARD	1100
⊠	10W RECESS/SURFACE MOUNTING LED	IN CEILING
⊠	25-AMP PLUG POINT (AC)	AS/SITE
⊠	FAN BOX	AS/SITE
⊠	LIGHT BOX	AS/SITE
⊠	6 -AMP PLUG POINT	AS/SITE
⊠	6/16 -AMP POWER POINT	AS/SITE
⊠	DISTRIBUTION BOARD	1200 BOTTOM OF DB

PROJECT:
Proposed Shia Complex
For BIDA, Bhadohi

AGENCY:
SHEET TITLE:-
SECOND FLOOR
ELECTRICAL SUPPLY PLAN

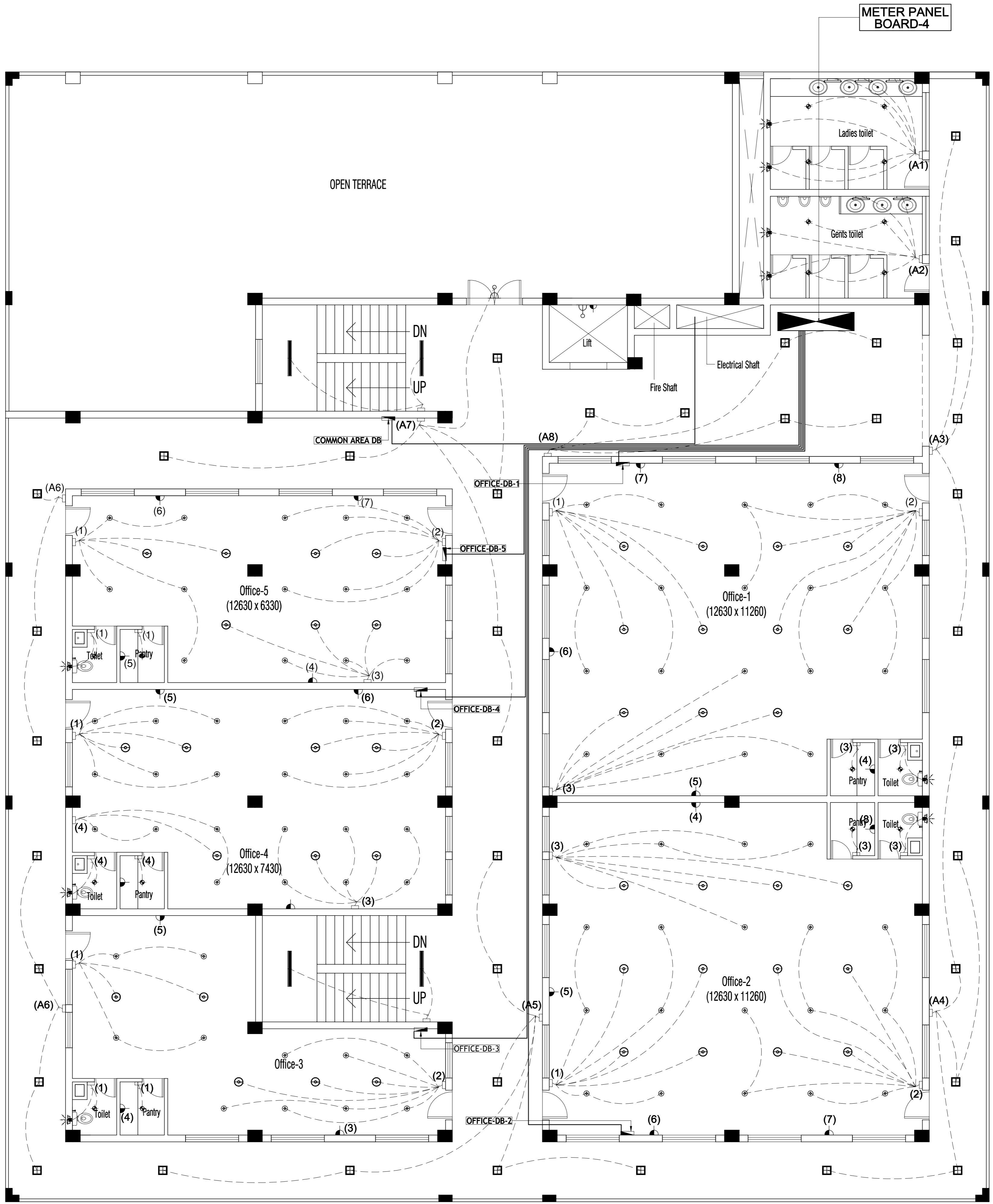
DWG. TITLE:-
COMMERCIAL BUILDING
(ELECTRICAL)
DATE:
DEC.-2022
DRG. NO.:

SCALE:
A1:75
DRN BY:
S.TRIPATHI
DRN BY:
A.ATIQUE
CHECKED BY:
D.P. SHAH

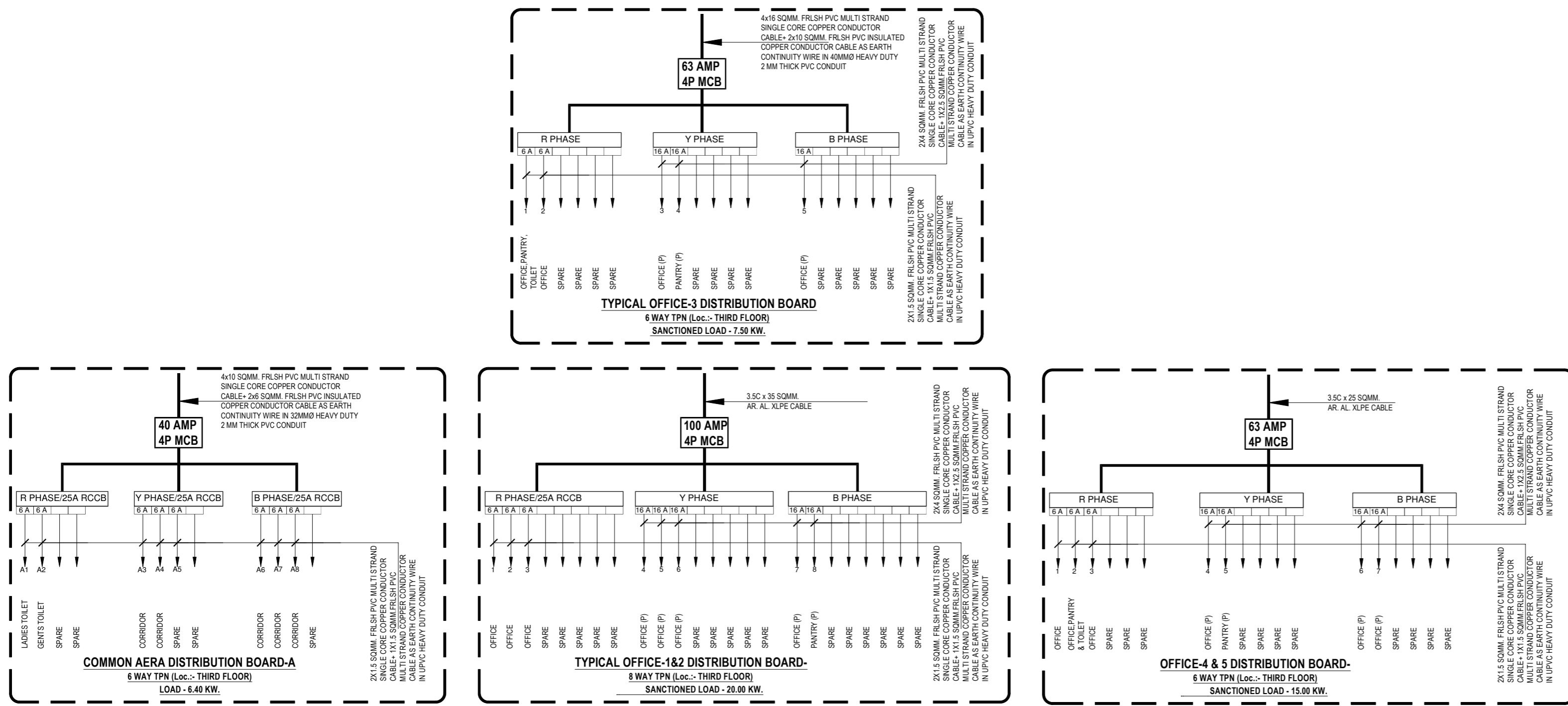
Revision:
KISHORE KAPOOR
ARCHITECT
Council of Architecture
Reg. No. CA/87/10966

ARCHITECTURAL CONSULTANTS:
KAPOOR AND ASSOCIATES
Flat no.3, Block no.1,
Didwania Square,
Mahmoorganj, Varanasi
Ph- 3561571,
Cell 98390-89413

SERVICES CONSULTANTS:
SHAH & PANT
CONSULTING ENGINEERS (P) LTD.
AN ISO 9001:2008 COMPANY
4th Floor, HALWASIYA COURT, HAZRATGANJ, LUCKNOW (U.P.)
Tel: No. -052-2336025, Fax: -052-2336026, Cell: -9839013286, 9419077119
Email: shah_pant@yahoo.co.in, Web: www.shahpantconsultingengineers.com



Third Floor Plan ELECTRICAL SUPPLY PLAN



LEGEND:- ELECTRICAL		
SYMBOL	DESCRIPTION	HEIGHT
	2X22W LED TUBE LIGHT FIXTURE	IN CEILING
	MIRROR LIGHT	AS/SITE
	1X22W LED TUBE LIGHT FIXTURE	IN CEILING
	6 W LED DOWN LIGHT	IN CEILING
	BULK HEAD	AS/SITE
	SWITCH BOARD	1100
	10W RECESS/SURFACE MOUNTING LED FLOOD LIGHT	IN CEILING
	FAN BOX	AS/SITE
	LIGHT BOX	AS/SITE
	6 -AMP PLUG POINT	AS/SITE
	6/16 -AMP POWER POINT	AS/SITE
	DISTRIBUTION BOARD	1200 BOTTOM OF 'BB'

PROJECT:
Proposed Shia Complex
For BIDA, Bhadohi

AGENCY:
SHEET TITLE:-
THIRD FLOOR
ELECTRICAL SUPPLY PLAN

DWG. TITLE:-
COMMERCIAL BUILDING
(ELECTRICAL)
DATE:
DEC.-2022
SCALE:
A1:75
DRG. NO.:-
PCC/BIDA/TF/ELE-05

DRN BY:
S.TRIPATHI
DRN BY:
A.ATIQUE
CHECKED BY:
D.P. SHAH



ARCHITECTURAL CONSULTANTS:
KAPOOR AND ASSOCIATES
Flat no.3, Block no.1,
Didwania Square,
Mahmoorganj, Varanasi
Ph- 3561571,
Cell 98390-89413

SERVICES CONSULTANTS:
SHAH & PANT
CONSULTING ENGINEERS (P) LTD.
AN ISO 9001:2008 COMPANY
4th Floor, HALWASIA COURT, HAZRATGANJ, LUCKNOW (U.P.)
Tel: No. - 0522-233625, Fax: - 0522-233626, C-01: - 0522-233627, 0522-233628, 0522-233629
Email: shah_pant@yahoo.co.in, Web: www.shahpantconsultingengineers.com