

SD-13

DESIGN BY: _____ CHECKED BY: _____

SCALE: _____ DATE: _____

ARCHITECTS SIGN: _____

OWNERS SIGN: _____

Authorized Signatory: _____

For Sequel Builders Pvt. Ltd.

AR. D.P. B. MANDRA

CA. 2001/27/40M

PROJECT: PROPOSED PLAN FOR SPORTS CITY AT LAND PARCEL SC-01/A1-ALPHA, SECTOR-79, NOIDA FOR - M/S SEQUEL BUILDCON PVT. LTD.

DRAWING TITLE: TOWER - D FLOOR PLANS & DETAIL AREA CALCULATIONS

DATE: 11/17/2015

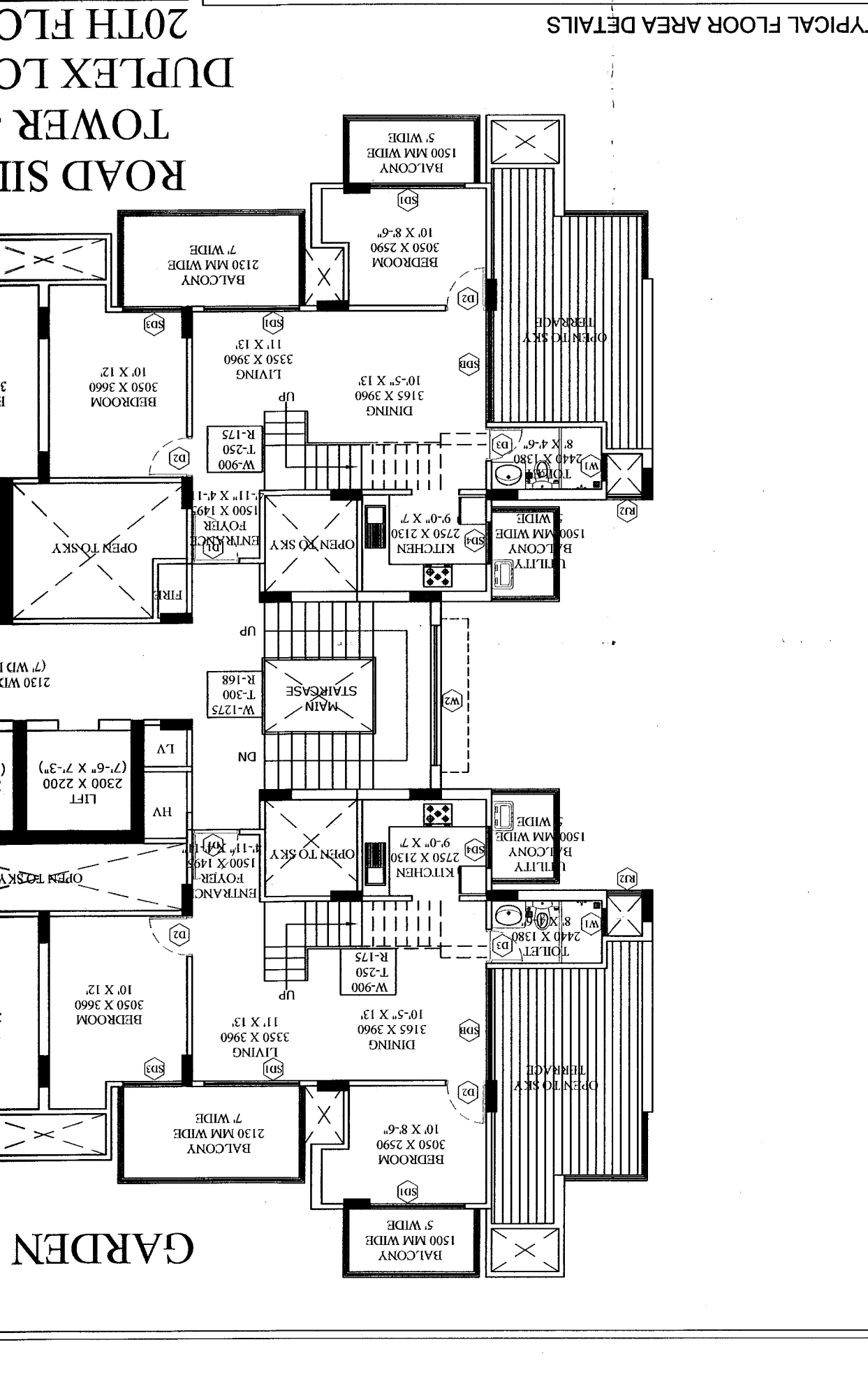
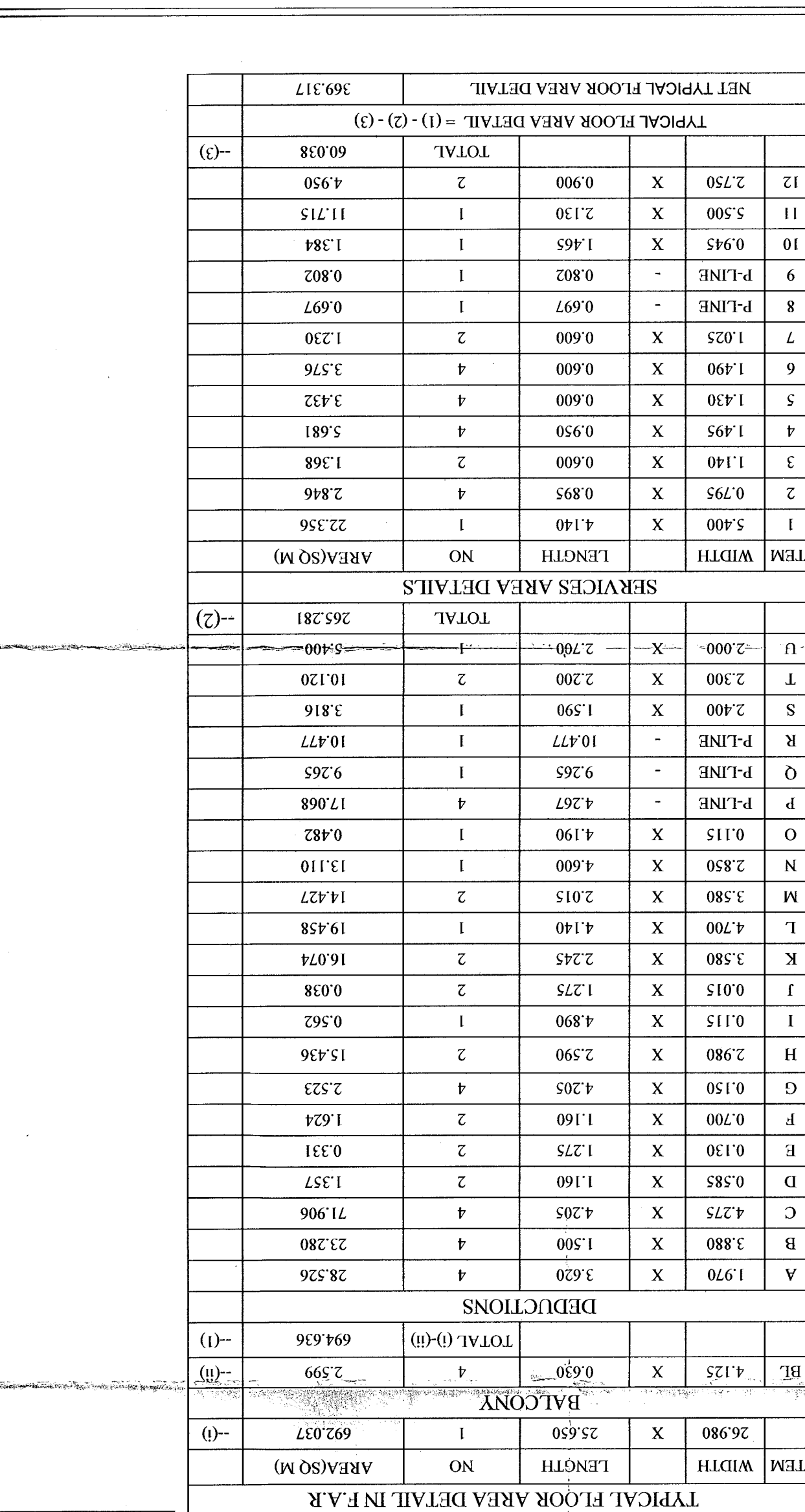
PROJECT: PROPOSED PLAN FOR SPORTS CITY AT LAND PARCEL SC-01/A1-ALPHA, SECTOR-79, NOIDA FOR - M/S SEQUEL BUILDCON PVT. LTD.

NET TYPICAL FLOOR AREA DETAIL

ITEM	WIDTH	LENGTH	NO	AREA(SQ M)
A	1.970	3.620	4	28.526
B	3.880	1.500	4	23.280
C	4.275	4.205	4	71.906
D	0.585	1.160	2	1.357
E	0.130	1.275	2	0.331
F	0.700	1.160	2	1.624
G	0.150	4.205	4	2.523
H	2.980	1.536	2	15.436
I	0.115	4.890	1	0.562
J	0.015	1.275	2	0.038
K	3.880	2.245	2	16.074
L	4.700	4.140	1	19.458
M	2.850	2.015	2	14.427
N	4.600	4.140	1	19.458
O	0.115	4.190	1	0.482
P	1.068	4.267	4	17.068
Q	1.068	9.265	1	10.477
R	1.990	1.816	1	3.616
S	2.400	1.590	1	3.816
T	2.300	2.200	2	10.120
U	2.000	2.700	1	5.400
TOTAL				265.281

NET TYPICAL FLOOR AREA DETAIL

ITEM	WIDTH	LENGTH	NO	AREA(SQ M)
A	1.970	3.620	4	28.526
B	3.880	1.500	4	23.280
C	4.275	4.205	4	71.906
D	0.585	1.160	2	1.357
E	0.130	1.275	2	0.331
F	0.700	1.160	2	1.624
G	0.150	4.205	4	2.523
H	2.980	1.536	2	15.436
I	0.115	4.890	1	0.562
J	0.015	1.275	2	0.038
K	3.880	2.245	2	16.074
L	4.700	4.140	1	19.458
M	2.850	2.015	2	14.427
N	4.600	4.140	1	19.458
O	0.115	4.190	1	0.482
P	1.068	4.267	4	17.068
Q	1.068	9.265	1	10.477
R	1.990	1.816	1	3.616
S	2.400	1.590	1	3.816
T	2.300	2.200	2	10.120
U	2.000	2.700	1	5.400
TOTAL				265.281



NET TYPICAL FLOOR AREA DETAIL

ITEM	WIDTH	LENGTH	NO	AREA(SQ M)
A	1.970	3.620	4	28.526
B	3.880	1.500	4	23.280
C	4.275	4.205	4	71.906
D	0.585	1.160	2	1.357
E	0.130	1.275	2	0.331
F	0.700	1.160	2	1.624
G	0.150	4.205	4	2.523
H	2.980	1.536	2	15.436
I	0.115	4.890	1	0.562
J	0.015	1.275	2	0.038
K	3.880	2.245	2	16.074
L	4.700	4.140	1	19.458
M	2.850	2.015	2	14.427
N	4.600	4.140	1	19.458
O	0.115	4.190	1	0.482
P	1.068	4.267	4	17.068
Q	1.068	9.265	1	10.477
R	1.990	1.816	1	3.616
S	2.400	1.590	1	3.816
T	2.300	2.200	2	10.120
U	2.000	2.700	1	5.400
TOTAL				265.281

NET TYPICAL FLOOR AREA DETAIL

ITEM	WIDTH	LENGTH	NO	AREA(SQ M)
A	1.970	3.620	4	28.526
B	3.880	1.500	4	23.280
C	4.275	4.205	4	71.906
D	0.585	1.160	2	1.357
E	0.130	1.275	2	0.331
F	0.700	1.160	2	1.624
G	0.150	4.205	4	2.523
H	2.980	1.536	2	15.436
I	0.115	4.890	1	0.562
J	0.015	1.275	2	0.038
K	3.880	2.245	2	16.074
L	4.700	4.140	1	19.458
M	2.850	2.015	2	14.427
N	4.600	4.140	1	19.458
O	0.115	4.190	1	0.482
P	1.068	4.267	4	17.068
Q	1.068	9.265	1	10.477
R	1.990	1.816	1	3.616
S	2.400	1.590	1	3.816
T	2.300	2.200	2	10.120
U	2.000	2.700	1	5.400
TOTAL				265.281

TYPICAL FLOOR AREA DETAILS FOR SERVICES F.A.R.

ITEM	WIDTH	LENGTH	NO	AREA(SQ M)
A	4.125	4	4	2.599
B	26.980	1	1	692.037
TOTAL				694.636

DEDUCTIONS

ITEM	WIDTH	LENGTH	NO	AREA(SQ M)
A	3.895	1.150	1	4.479
B	1.615	0.400	2	1.292
C	5.245	1.150	2	6.607
D	1.615	1.795	1	14.621
E	1.615	1.795	1	14.621
F	3.095	3.270	1	10.121
G	2.480	1.795	1	4.452
H	3.898	2.545	1	9.915
TOTAL				60.038

MACHINE ROOM & WATER TANK CALCULATION FOR SERVICES F.A.R.

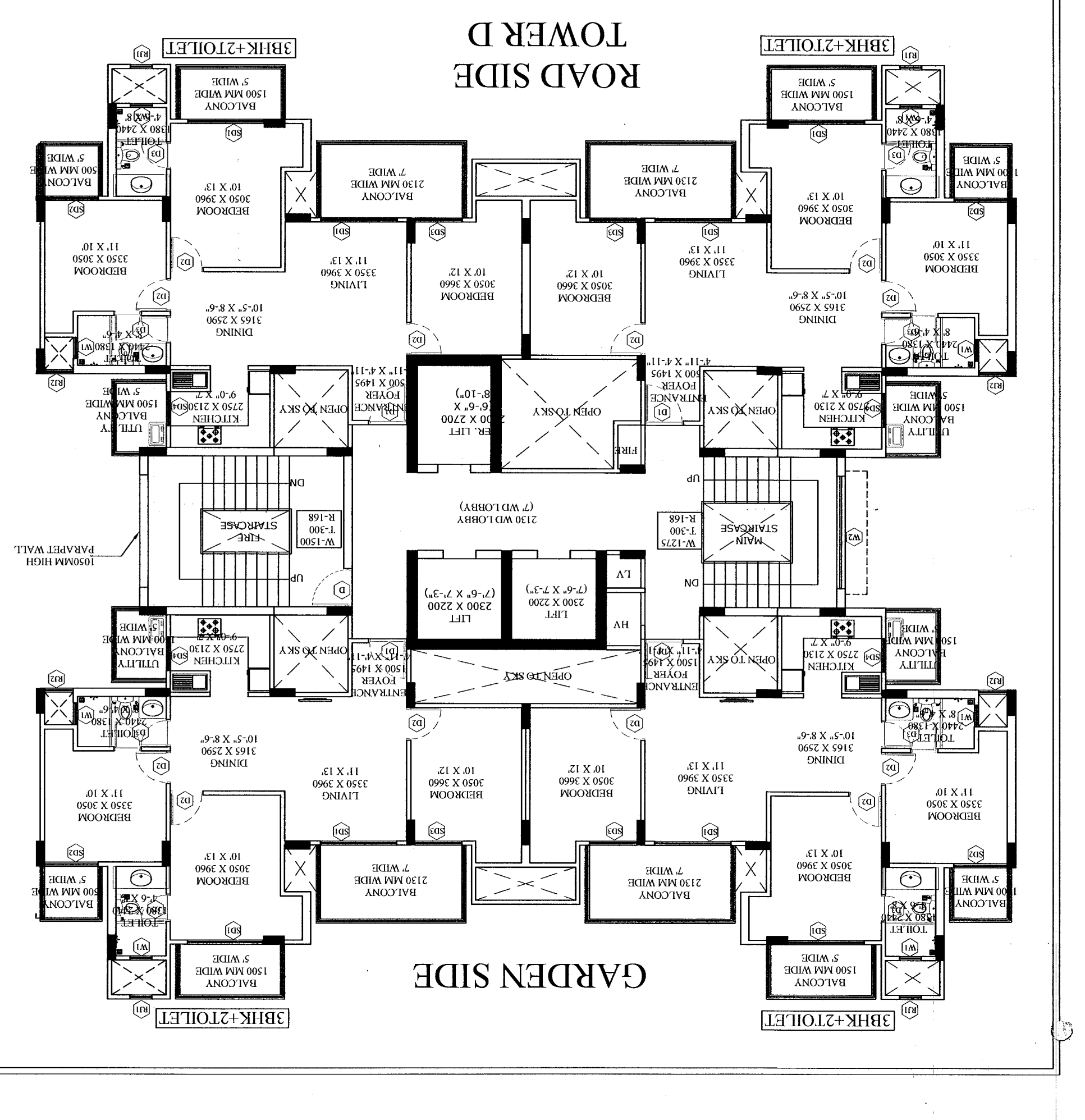
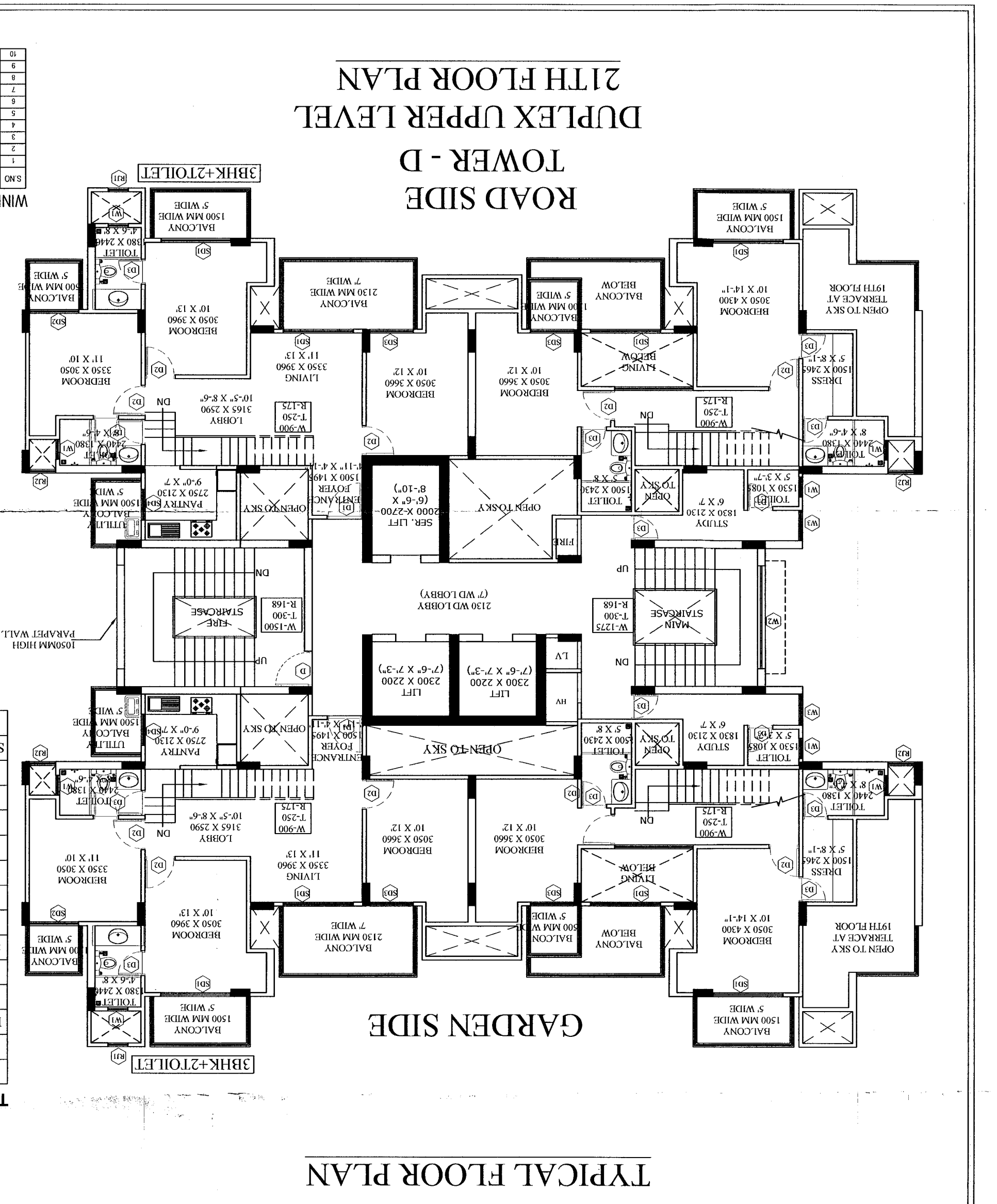
ITEM	WIDTH	LENGTH	NO	AREA(SQ M)
A	19.431	8.295	1	161.180
TOTAL				161.180

TYPICAL FLOOR AREA DETAILS FOR SERVICES F.A.R.

ITEM	WIDTH	LENGTH	NO	AREA(SQ M)
A	5.400	4.140	1	22.356
B	0.985	4.140	4	2.846
C	0.600	2	2	1.200
D	1.490	3.576	4	3.576
E	0.600	3.432	4	3.432
F	0.600	4.376	4	5.681
G	0.950	4	4	3.800
H	1.495	4	4	5.980
I	0.900	2	2	1.800
J	0.802	1	1	0.802
K	0.945	1	1	0.945
L	5.500	1	1	5.500
M	2.750	1	1	2.750
TOTAL				60.038

TYPICAL FLOOR AREA DETAILS FOR SERVICES F.A.R.

ITEM	WIDTH	LENGTH	NO	AREA(SQ M)
A	5.400	4.140	1	22.356
B	0.985	4.140	4	2.846
C	0.600	2	2	1.200
D	1.490	3.576	4	3.576
E	0.600	3.432	4	3.432
F	0.600	4.376	4	5.681
G	0.950	4	4	3.800
H	1.495	4	4	5.980
I	0.900	2	2	1.800
J	0.802	1	1	0.802
K	0.945	1	1	0.945
L	5.500	1	1	5.500
M	2.750	1	1	2.750
TOTAL				60.038



WINDOW SCHEDULE

S.NO	OPENING	HEIGHT	WIDTH	AREA	LOCATION	DESCRIPTION
1	10' X 12'	10'	12'	120	BRK-1	ALUMINUM WINDOW
2	10' X 12'	10'	12'	120	BRK-2	ALUMINUM WINDOW
3	10' X 12'	10'	12'	120	BRK-3	ALUMINUM WINDOW
4	10' X 12'	10'	12'	120	BRK-4	ALUMINUM WINDOW
5	10' X 12'	10'	12'	120	BRK-5	ALUMINUM WINDOW
6	10' X 12'	10'	12'	120	BRK-6	ALUMINUM WINDOW
7	10' X 12'	10'	12'	120	BRK-7	ALUMINUM WINDOW
8	10' X 12'	10'	12'	120	BRK-8	ALUMINUM WINDOW
9	10' X 12'	10'	12'	120	BRK-9	ALUMINUM WINDOW
10	10' X 12'	10'	12'	120	BRK-10	ALUMINUM WINDOW
11	10' X 12'	10'	12'	120	BRK-11	ALUMINUM WINDOW
12	10' X 12'	10'	12'	120	BRK-12	ALUMINUM WINDOW
13	10' X 12'	10'	12'	120	BRK-13	ALUMINUM WINDOW
14	10' X 12'	10'	12'	120	BRK-14	ALUMINUM WINDOW
15	10' X 12'	10'	12'	120	BRK-15	ALUMINUM WINDOW
16	10' X 12'	10'	12'	120	BRK-16	ALUMINUM WINDOW
17	10' X 12'	10'	12'	120	BRK-17	ALUMINUM WINDOW
18	10' X 12'	10'	12'	120	BRK-18	ALUMINUM WINDOW
19	10' X 12'	10'	12'	120	BRK-19	ALUMINUM WINDOW
20	10' X 12'	10'	12'	120	BRK-20	ALUMINUM WINDOW

FOR PROPOSED BUILDING AS PER...
 LISTS SUBMITTED FOR APPROVAL PHASES.
 P. Masil, Asst. Arch. Architect
 11/17/2015