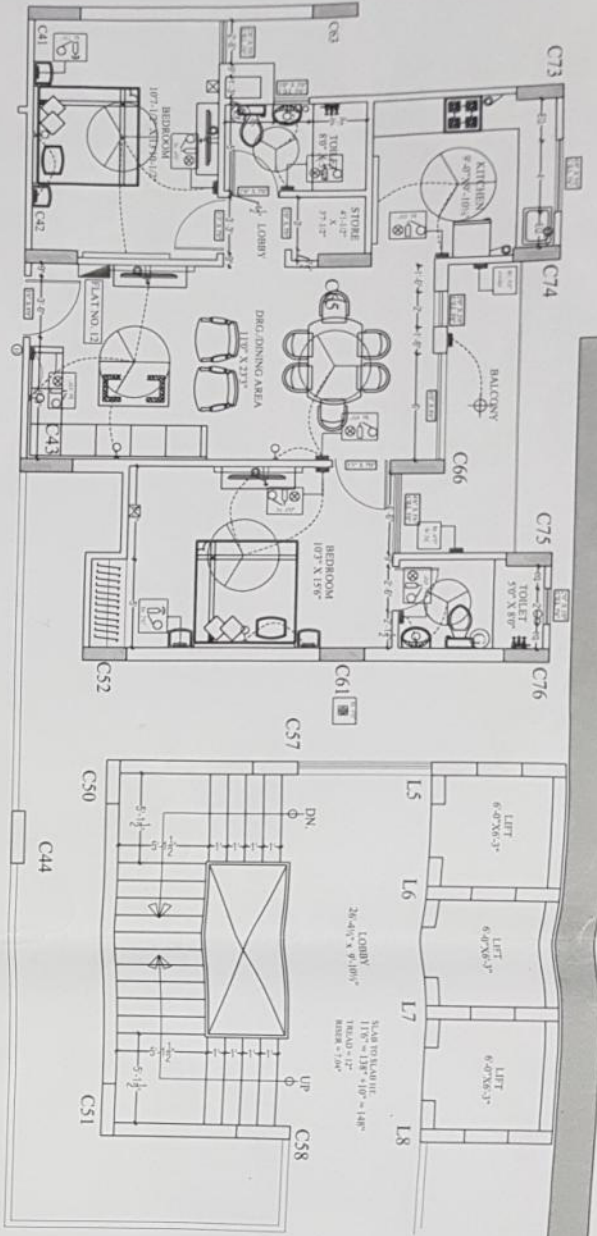
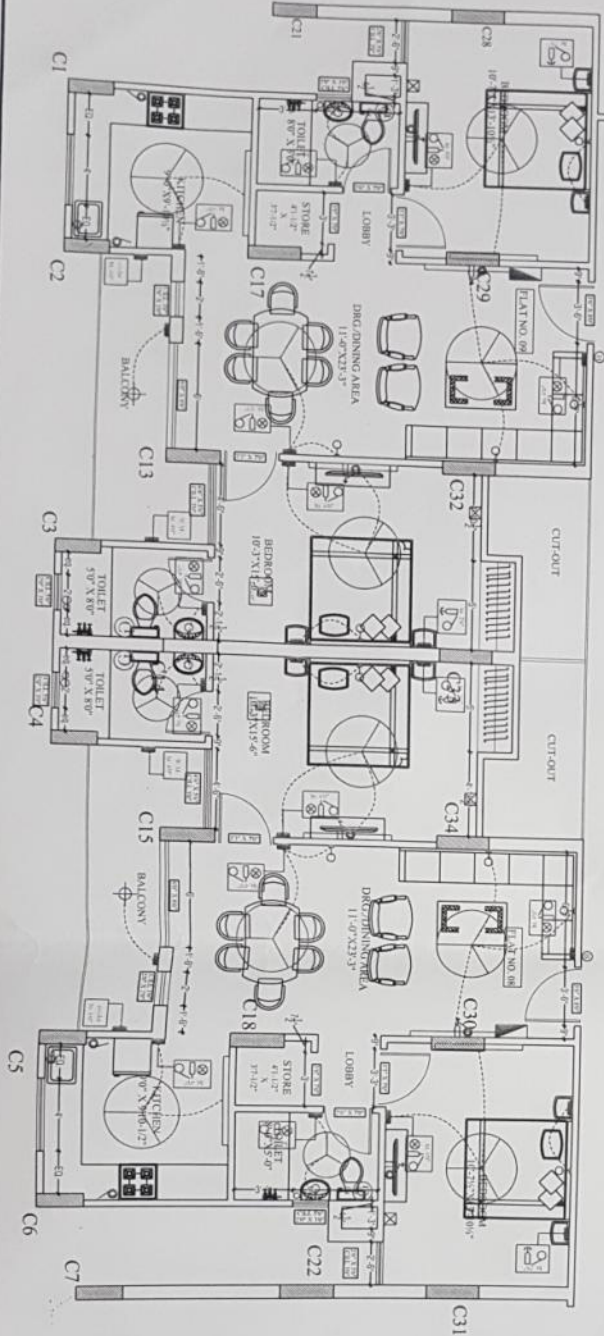
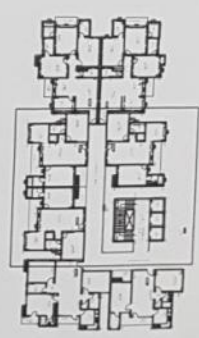


MARUTI "FOREST" AT SHAMSHABAD ROAD



CORRIDOR 8'-9" WIDE



CORRIDOR 8'-9" WIDE

NAME	SYMBOL	HEIGHT
1 LIGHT POINT	○	AS/CHART
2 POWER POINT	⊖	AS/CHART
3 TELEPHONE POINT	☎	AS/CHART
4 T.V. POINT	Ⓜ	AS/CHART
5 SWITCH BOARD	Ⓜ	AS/CHART
6 CEILING POINT	⊕	AS/CHART
7 WALL BRACKET	⊕	7'0"
8 5 AMP. PLUG POINT	Ⓜ	AS/CHART
9 POWER PLUG	Ⓜ	AS/CHART
10 GEYSER POINT	Ⓜ	AS/CHART
11 A.C. POINT	Ⓜ	AS/CHART
13 TUBE LIGHT	Ⓜ	7'6"
14 CEILING FAN	Ⓜ	
15 EXHAUST	Ⓜ	
16 DISTRIBUTION BOARD	Ⓜ	
17 BELL	Ⓜ	

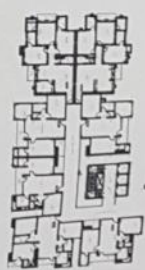
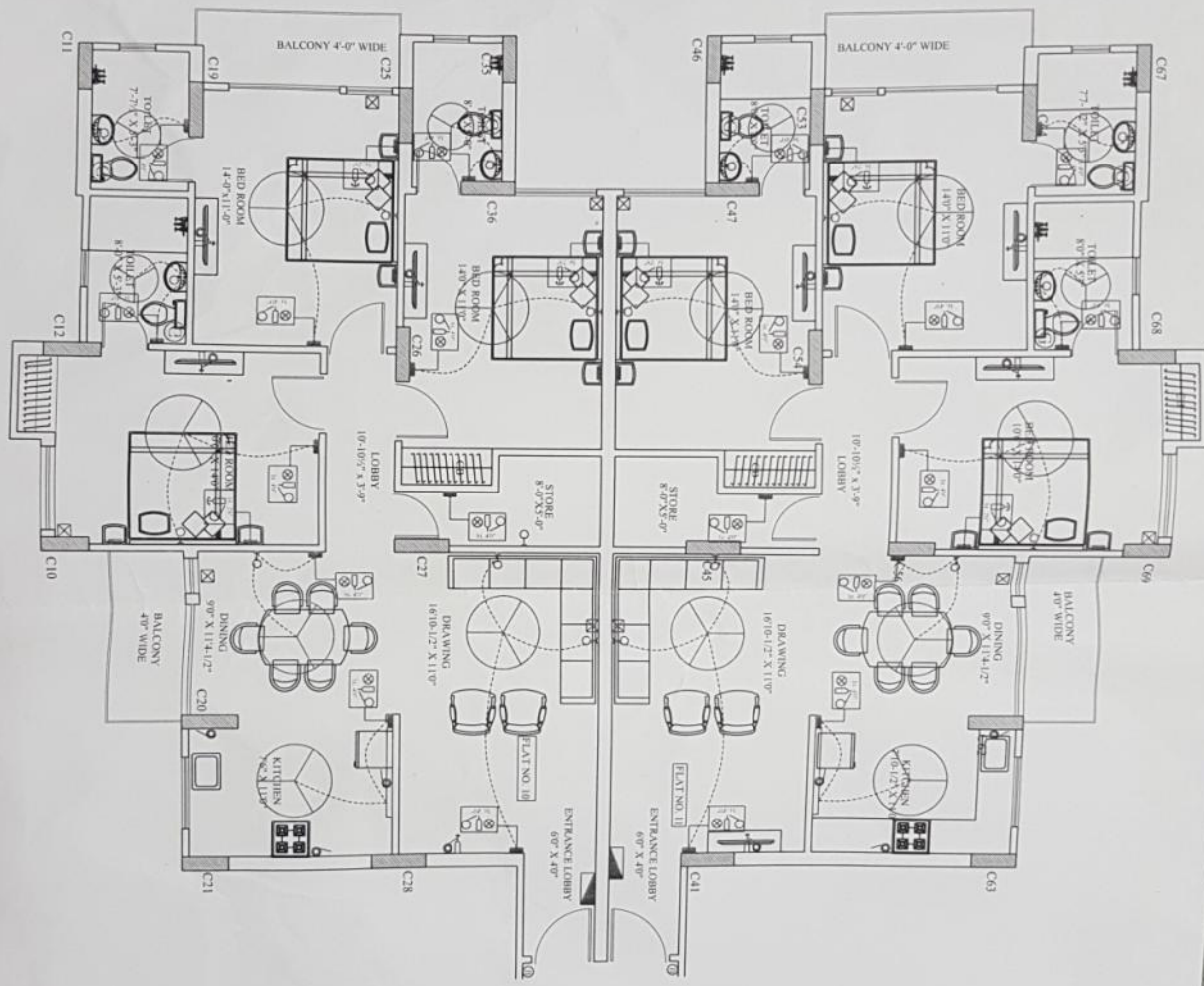
BRICK WORK PLAN
FLAT NO.08, 09 & 12

(Elevation)

ARCHITECT
AMIT JUNEJA
PRT. DESIGNER VASUDEV CONSULTANT
RAJNI JUNEJA

AADHARSHILA
106/1, G. G. MEDICAL INST.
BUILDING SANJAY PLACE
AGRA-2 PIN NO. 4000820

ELECTRICAL PLAN
FLAT NO.10 & 11



NAME	SYMBOL	HEIGHT
1 LIGHT POINT		AS/CHART
2 POWER POINT		AS/CHART
3 TELEPHONE POINT		AS/CHART
4 T.V. POINT		AS/CHART
5 SWITCH BOARD		AS/CHART
6 CEILING POINT		AS/CHART
7 WALL BRACKET		7'0"
8 5 AMP. PLUG POINT		AS/CHART
9 POWER PLUG		AS/CHART
10 GEYSER POINT		AS/CHART
11 A.C. POINT		AS/CHART
13 TUBE LIGHT		7'0"
14 CEILING FAN		
15 DISTRIBUTION BOARD		
16 BELL		

MARUTI "FOREST" AT SHAMSHABAD ROAD

ARCHITECT
AMIT JUNEJA
INTL. DESIGNER & VASTU CONSULTANT
RAJNI JUNEJA

AADHARSHILA
ARCHITECTS, INTERIOR DESIGNERS & VASTU CONSULTANTS
106/1, G. G. MEDICAL INSTT.
BUILDING SANJAY PLACE
AGRA-2 PH. NO. 4000820