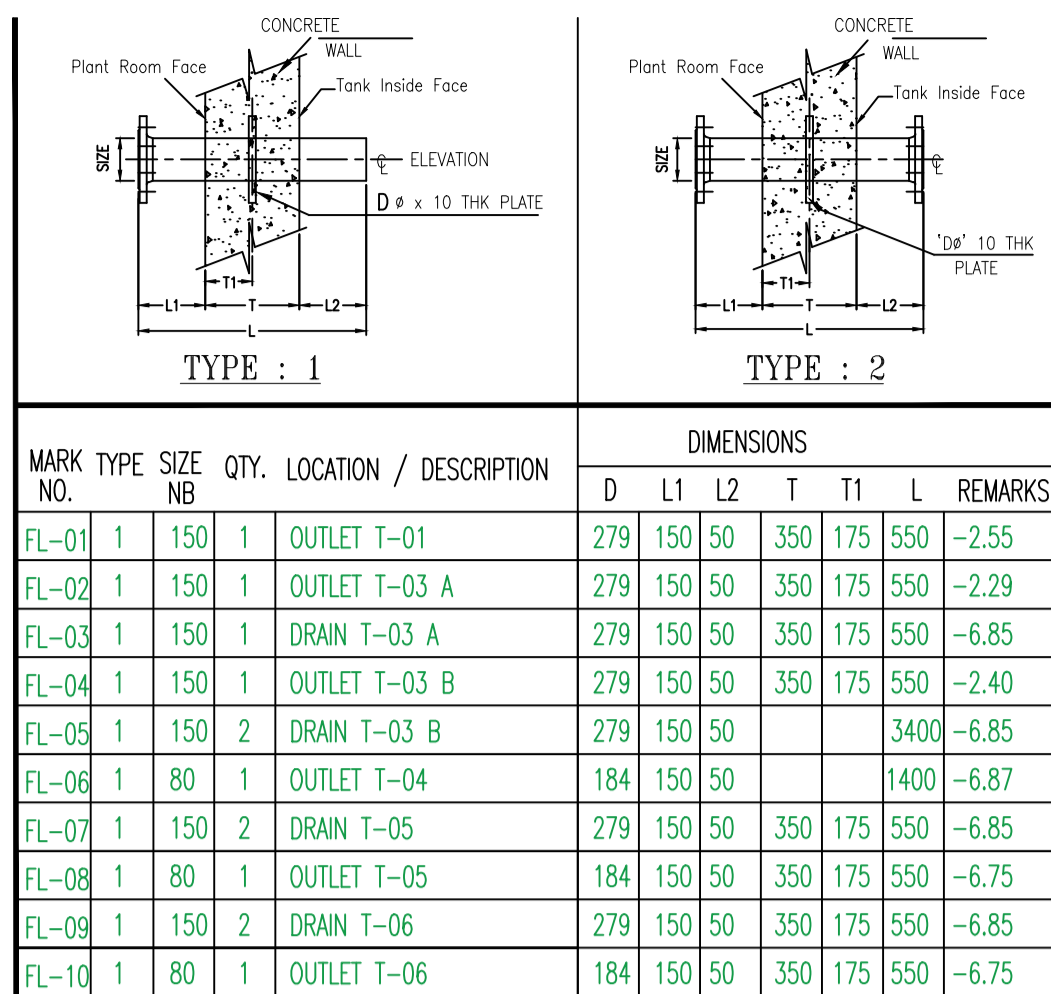
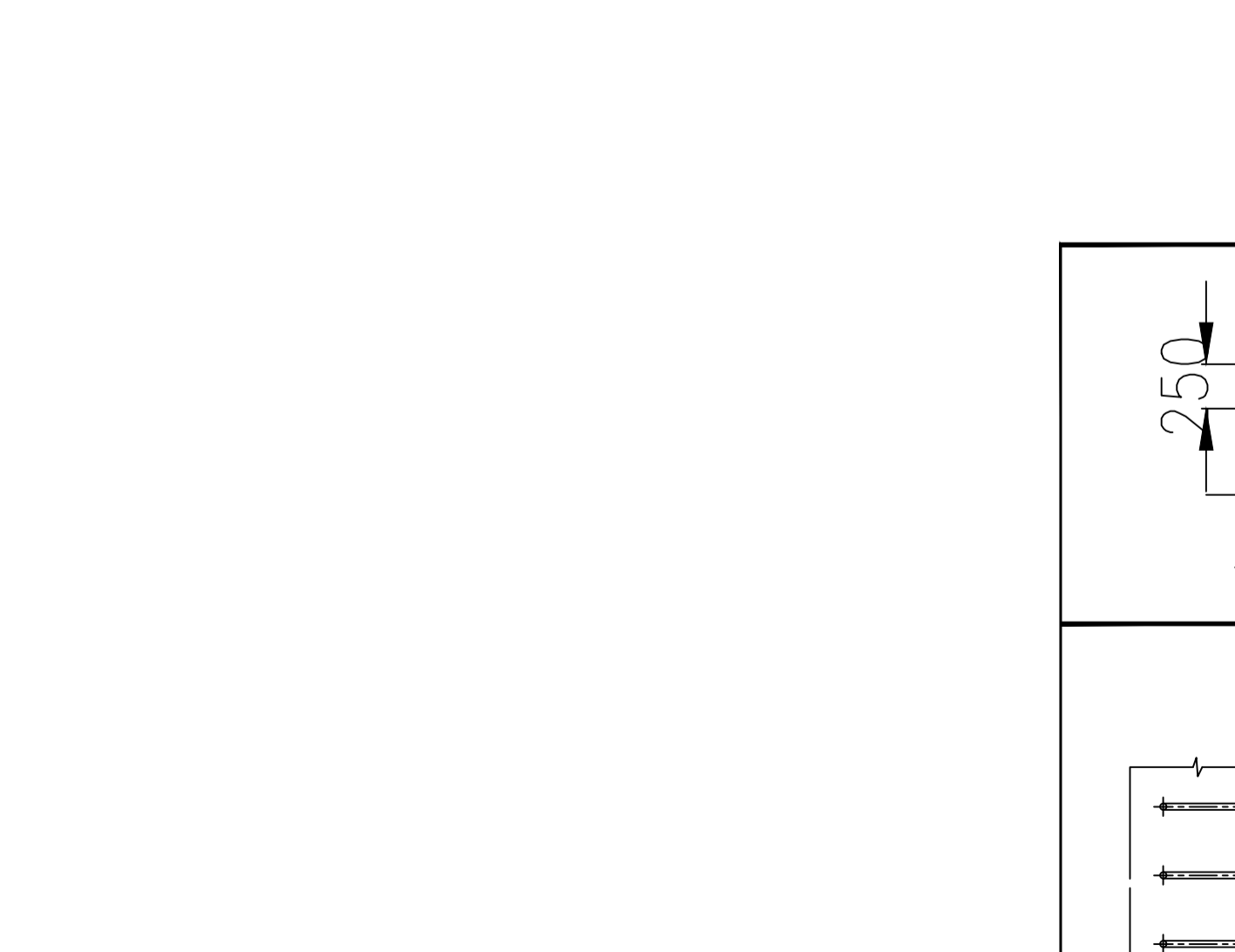
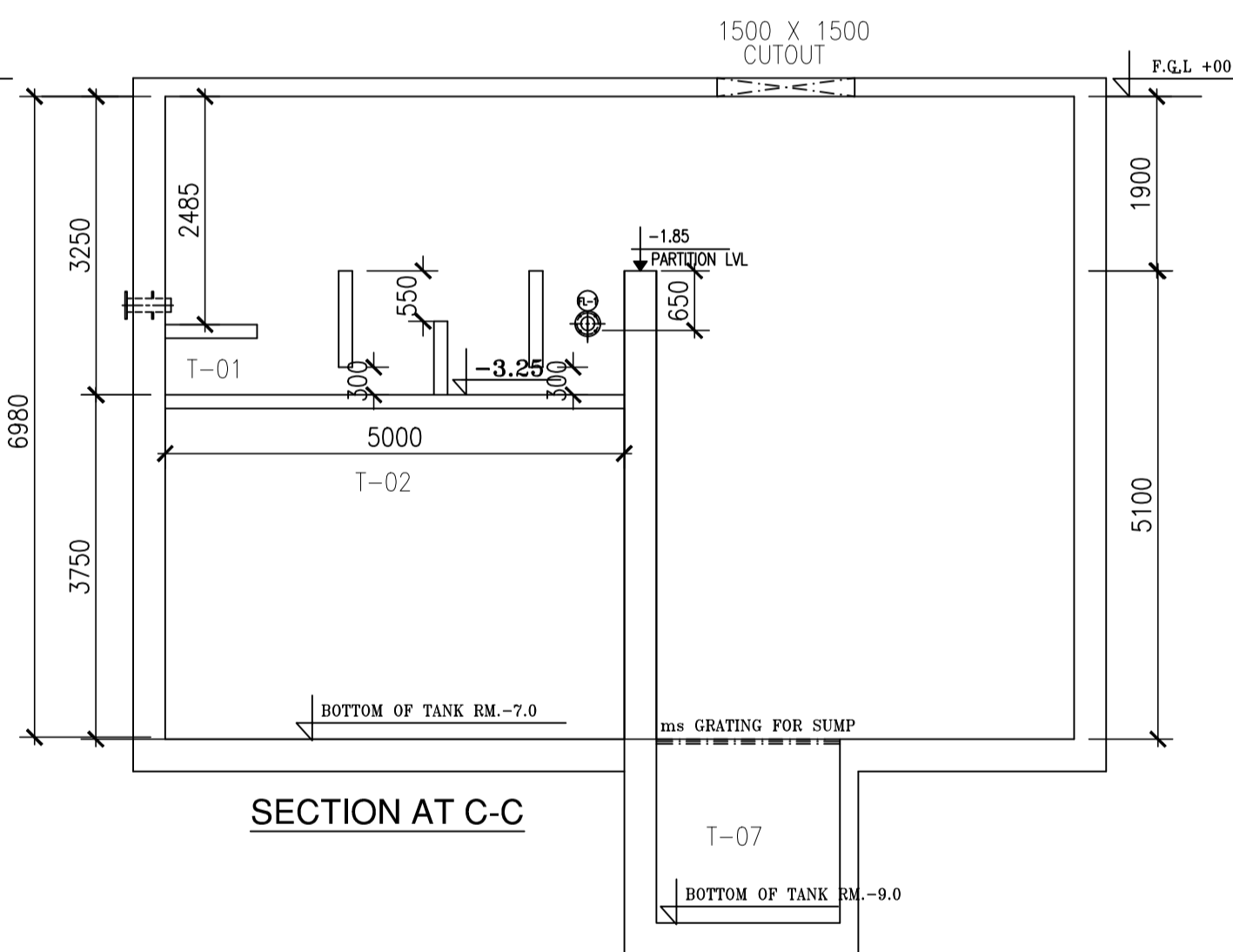


- 1) DO NOT SCALE THE DRAWING.
- 2) ALL DIMENSIONS ARE IN mm & ELEVATIONS ARE IN METERS.
- 3) ALL WALL THICKNESSES & \* MARKED DIMS TO BE DECIDED BY CIVIL DESIGNER. (\* MARKED DIMENSIONS ASSUMED AS 400 mm.)
- 4) MATERIAL OF CONSTRUCTION = R.C.C.
- 5) PAINTING – ALL MS PARTS ( IN CONTACT WITH WATER ) ARE TO BE PAINTED WITH TWO COATS OF BLACK EPOXY PAINT
- 6) GROUND LEVEL = EL +0.575 MM as per instruct by consultant
- 7) TOLERANCES ON SIZES AS FOLLOWS
  - DIMENSION UP TO 2000mm :-  $\pm 20\text{MM}$
  - DIMENSION FROM 2000 TO 5000 :-  $\pm 30\text{MM}$
  - DIMENSION FROM 5000 TO 10000 :-  $\pm 50\text{MM}$
  - DIMENSION ABOVE 10000 :-  $\pm 75\text{MM}$
- 8) ALL CIVIL INCLUDING PUDDLE PIPES, INSERT PLATES, RUNGS, STAIR CASE, LADDERS, HAND RAILING, INTERNAL & EXTERNAL PAINTING ETC. IS IN CLIENTS SCOPE OF SUPPLY.
- 9) PUDDLE PIPE MOC:-
  - a) PIPES:- IS:1239-I M.D. ERW UP TO 250NB,
  - b) FLANGES:- IS:2062 Gr.A, 10 mm THK. PLATE TYPE DRILLED AS PER BS-10 TABLE 'D', OFF-CRS, FLAT FACE.
- 10) EL DENOTES ELEVATION.
- 11) BOT DENOTES BOTTOM OF TANK.
- 12) BOP DENOTES BOTTOM OF PIPE.
- 13) FGL DENOTES FINISH GROUND LEVEL.
- 14) TOS DENOTES TOP OF SLAB.
- 15) TOT DENOTES TOT.



LIST OF CIVIL UNITS FOR PHASE-1			
MARK NO.	DESCRIPTION	SIZE (S X W X D)	QTY.
T-01	BAR SCREEN & O & G TRAP	5.0 X 1.0 X 1.35 M	01
T-02	EQUALIZATION TANK	5.0 X 4.5 X 4.9 M	01
T-03	MBBR REACTOR	2.3 X 2.5 X 4.9 M	02
T-04	TUBE SETTLING TANK	2.3 X 2.6 X 4.9 M	01
T-05	CHLORINE CONTACT TANK	2.3 X 2.45 X 4.9 M	01
T-06	SLUDGE HOLDING TANK	2.5 X 2.0 X 4.9 M	01
T-07	SUMP	2.0 X 3.0 X 2.0 M	01

LIST OF ELECTRO-MECHANICAL EQUIPMENT				
MARK NO.	DESCRIPTION	QTY.	CAPACITY	REMARK
AB	AIR BLOWER	02	220 m <sup>3</sup> /hr @ 0.45 kg/cm <sup>2</sup>	
P-01	SEWAGE LIFTING PUMP	02	10.0 m <sup>3</sup> /hr @ 12 mwc	
P-02	SLUDGE TRANSFER PUMP	02	12.0 m <sup>3</sup> /hr @ 8 mwc	
P-03	FILTER FEED PUMP	02	10.0 m <sup>3</sup> /hr @ 30 mwc	
P-04	FILTER PRESS FEED PUMP	01	5 m <sup>3</sup> /hr @ 0.5 kg/cm <sup>2</sup>	
P-05	SUMP PUMP	02	10 m <sup>3</sup> /hr @ 10 mwc	
P-05	CHLORINE DOSING PUMP	01	0-5 LPH	
FP	FILTER PRESS	01	18'x18'x24 PLATES	
UV	ULTRA VIOLET	01	10.0 M3/HR	
DMF	DUAL MEDIA FILTER	01	900 DIA X 1800 HT.	
ACF	ACTIVATED CARBON FILTER	01	900 DIA X 1800 HT.	
ECP	ELECTRICAL CONTROL PANEL	01	ONLY FEEDERS REQUIRED	

0	02.03.15	ISSUED FOR APPROVAL	AS	KS
REV	DATE	DESCRIPTION	BY	APPD


**SMS EVOCARE LIMITED**  
 CORPORATE OFFICE : 4F-CS 58/59, Ansal Plaza, sector-1  
 (Opp. Dabur Chowk) Vaishali.  
 Tel.: 0120-41534707/71/72, Fax 0120-4153475  
 Web Site: [www.smsenvocare.com](http://www.smsenvocare.com), [www.smsl.co.in](http://www.smsl.co.in)

THIS DOCUMENT CONTAINS CONFIDENTIAL AND PROPRIETARY INFORMATION OF FONTUS WATER COMPANY  
DO NOT DISCLOSE OR DUPLICATE WITHOUT PRIOR WRITTEN CONSENT OF FONTOS WATER COMPANY

DRAWING TITLE : LAYOUT & SECTIONAL DRAWING

---

PROJECT : STP 200 KLD

CLIENT : RUDRA BUDWELL,GREATER NOIDA

DRAWN BY	DATE	CHK'D	MECH.	E & I	PROCESS	PROJECT	APPD. BY	SCALE :
MK	03/03/15	BY	AS	E&I	PROCESS	AS	AS	SCALE

DRAWING NO.	SMS-157-03-01	SHT NO. NO1 OF NO2	REV. 
-------------	---------------	--------------------	--

