

rev. no.	date	revision

project  
**ARIHANT AMBER  
AT NOIDA EXTN., INDIA**

title  
**WATER SUPPLY SYSTEM**

subtitle  
**UPPER BASEMENT PLAN**

drawing released for  
☐ APPROVAL  
☐ ADVANCE COPY  
☐ SUBMISSION  
☒ CONSTRUCTION

drg. no.  
ARIHANT AMBA / U.BASE./WS-01

scale  
1 : 210

date  
January - 2018

drawn by  
Anuj

designed by  
Sanjay Goel

checked by  
Anand Havelia

architects  
**DEEPAK MEHTA & ASSOCIATES**  
ARCHITECTS, PLANNERS, VALUERS, LANDSCAPE & INTERIORS  
PLOT NO. 16 ABHISHEK PLAZA L.S.C. MAYUR VIHAR PH II DELHI 91  
PH: 65272180 TELEFAX: 22770180

services consultant  
**Consummate Engineering Services (P) Ltd.**  
Noida Office : B - 67, Sector - 67, Noida - 201 301  
Tel : (0120) 2933090 ( 30 Lines )  
Lko. Office : R 806, Rakesh Plaza, Gomti Nagar, Lucknow  
e mail : mail@cespl.in, website : www.cespl.in

**LEGEND :**

S. No.	SYMBOL	DESCRIPTION	POSITION
1.		BUTTERFLY VALVE	
2.		NON RETURN VALVE	
3.		STRAINER	
4.		DOMESTIC WATER LINE	
5.		FLUSHING WATER LINE	
6.		DOMESTIC WATER SUPPLY PIPE	
7.		FLUSHING WATER SUPPLY PIPE	

**NOTES :**

- Material of Pipe :  
a) Pump Room - GI (Class C)  
b) Pipe Suspended from basement ceiling - GI (Class B)  
c) Riser TO OHT - GI (Class B)
- Domestic & Flushing Water Supply Pipe header shall be run by suspended from basement ceiling.
- Water Supply Drawing should be read along with Domestic & Flushing Water Supply Schematic Drawings.
- The Water Supply Pipe Dia mentioned on the Drawing is Nominal Bore / ID.

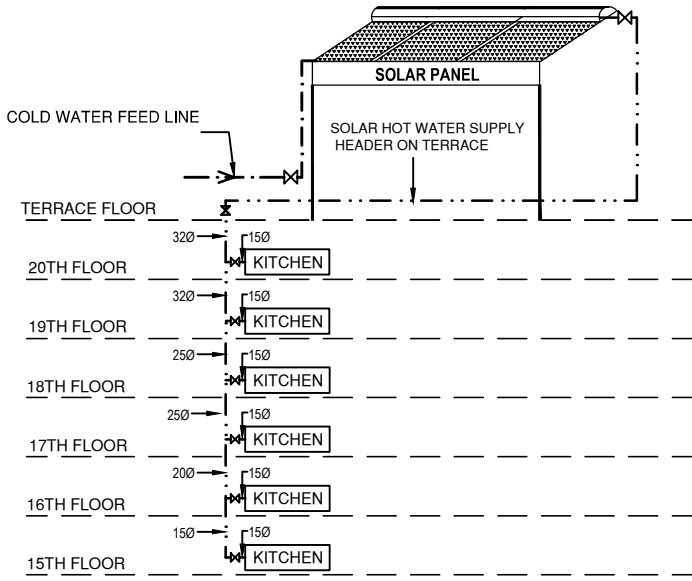
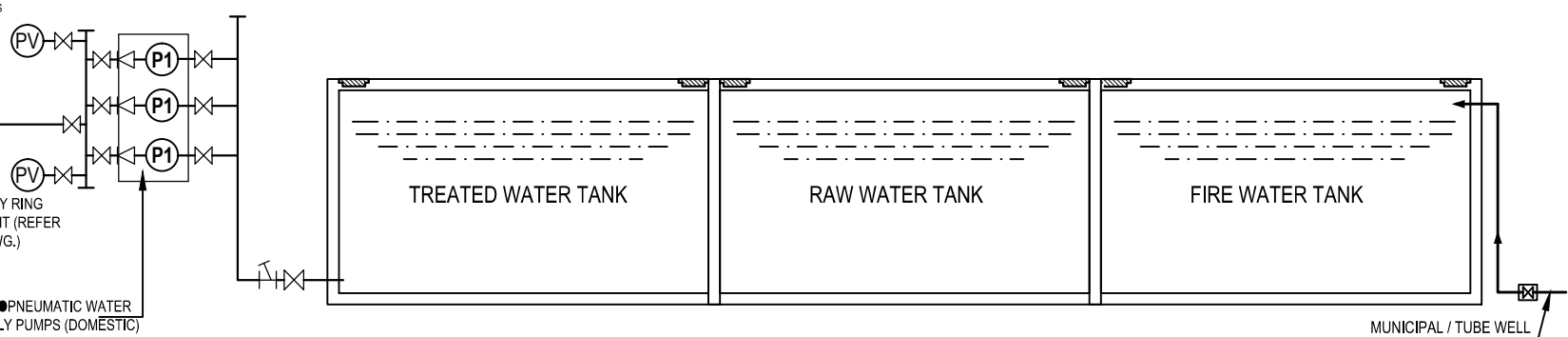




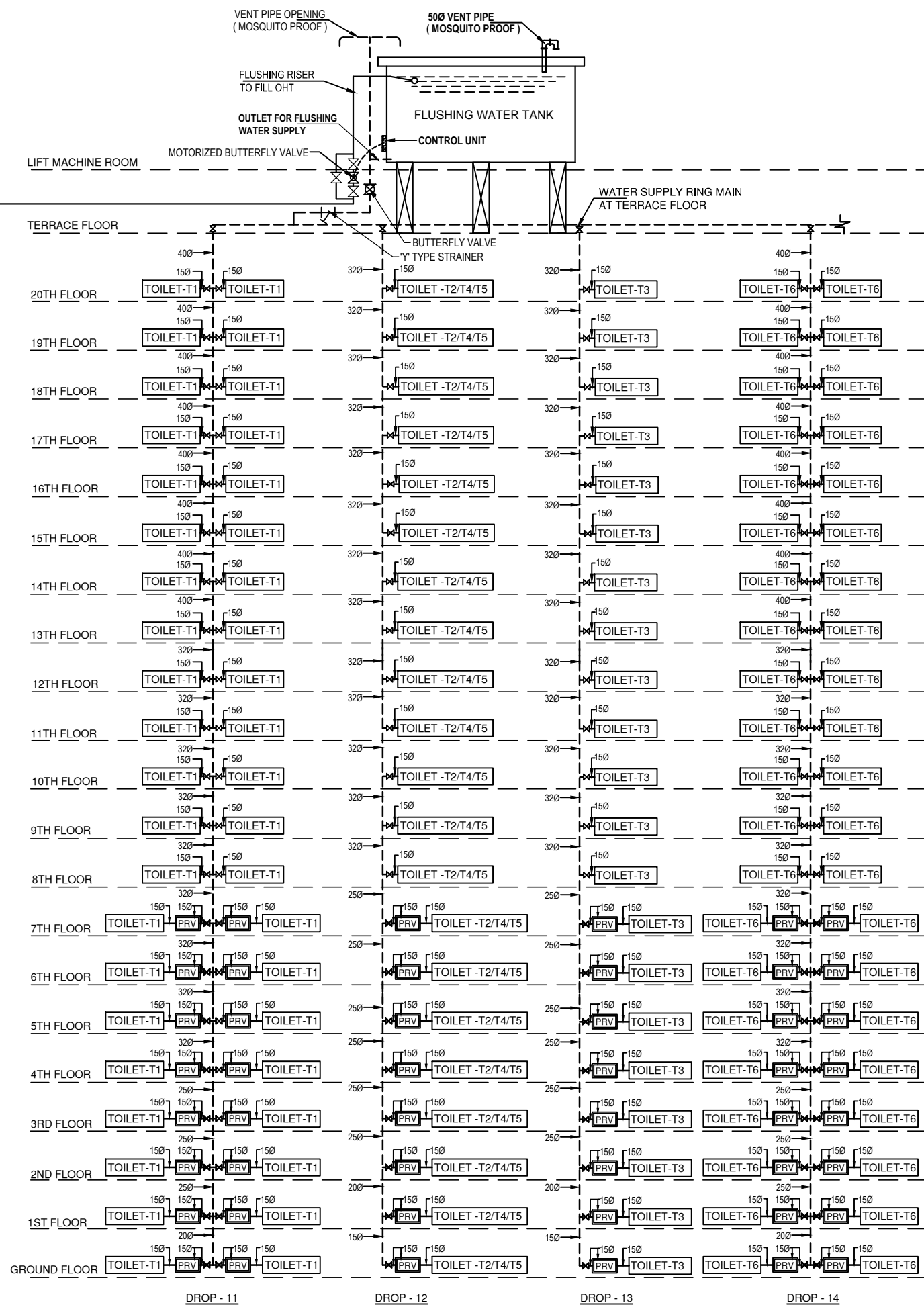


DETAIL OF DOMESTIC WATER SUPPLY DROPS

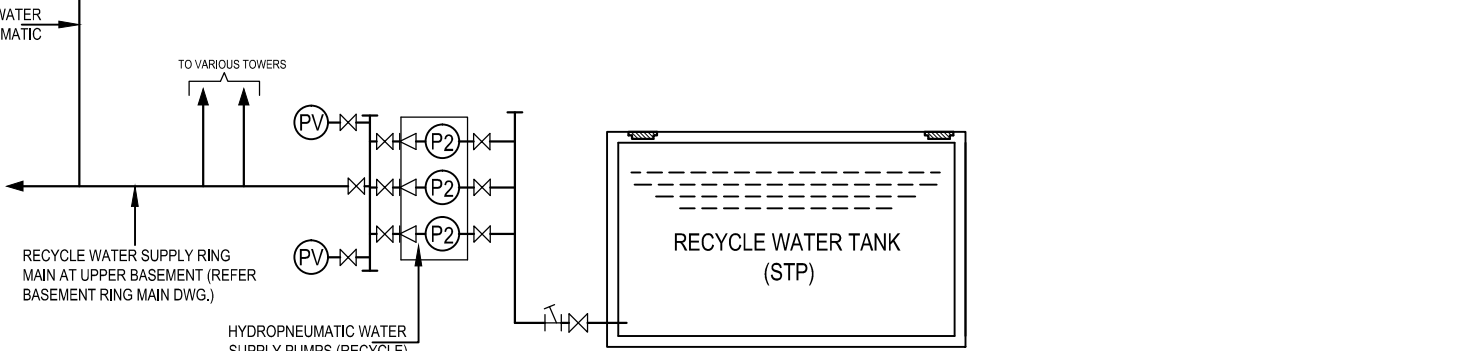
PER DOMESTIC WATER SUPPLY RING MAIN AT TERRACE FLOOR



DETAIL OF SOLAR WATER SUPPLY DROPS



DETAIL OF FLUSHING WATER SUPPLY DROPS

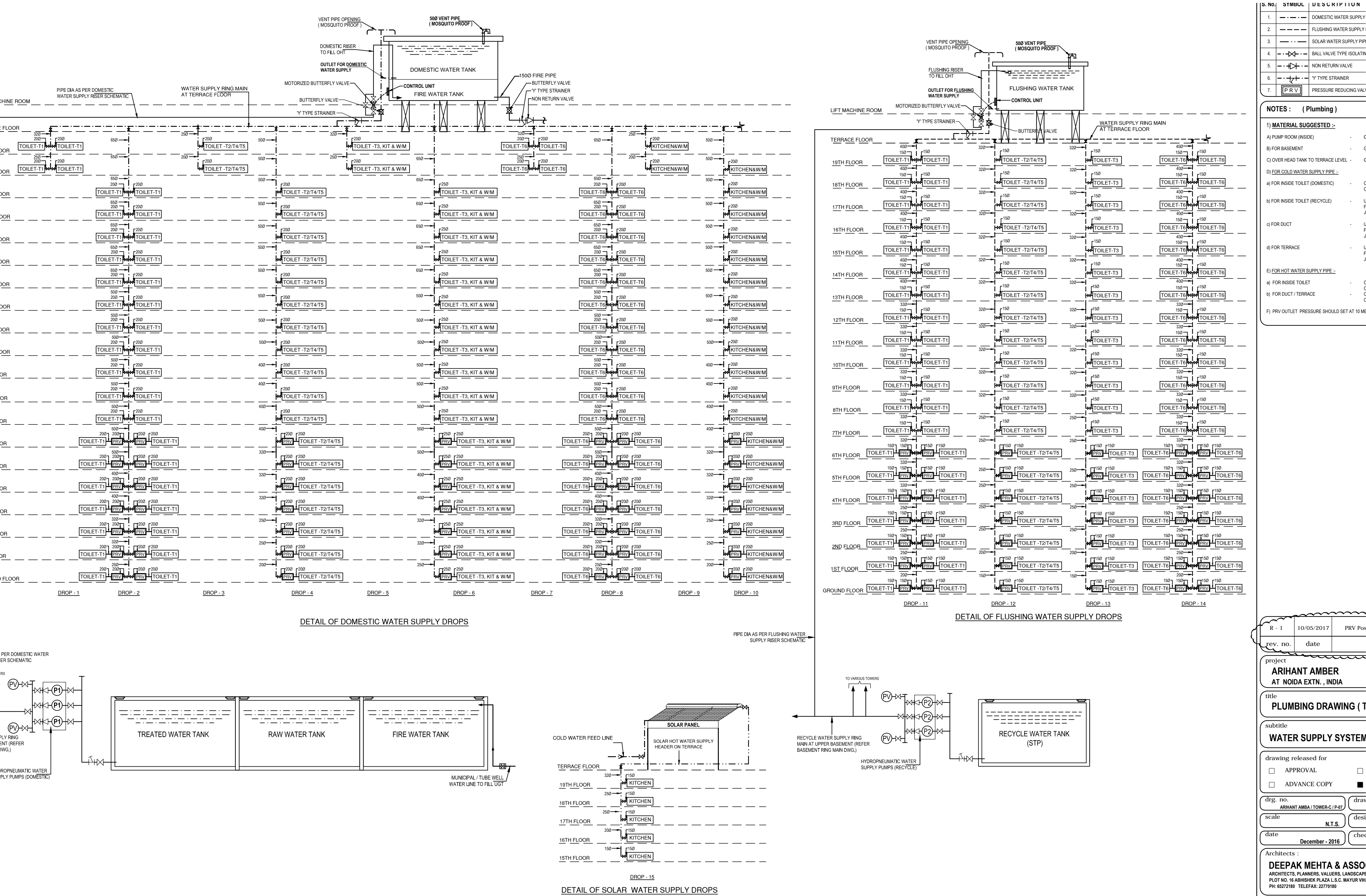


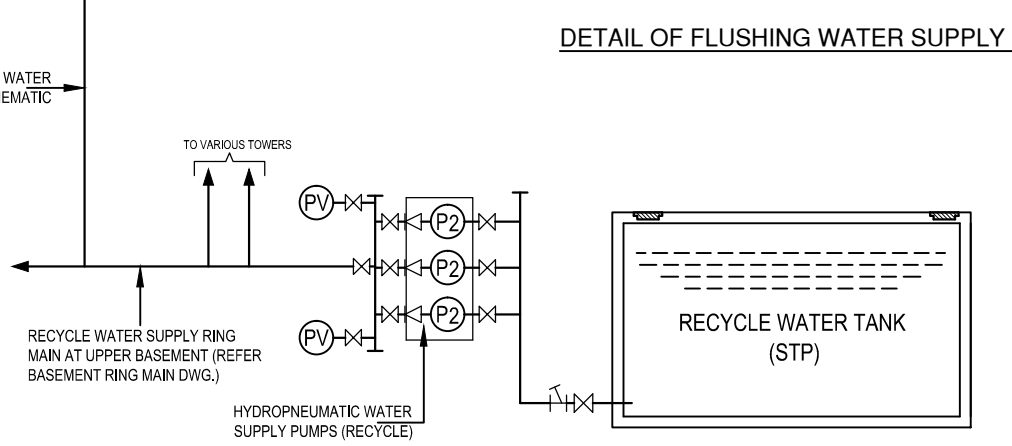
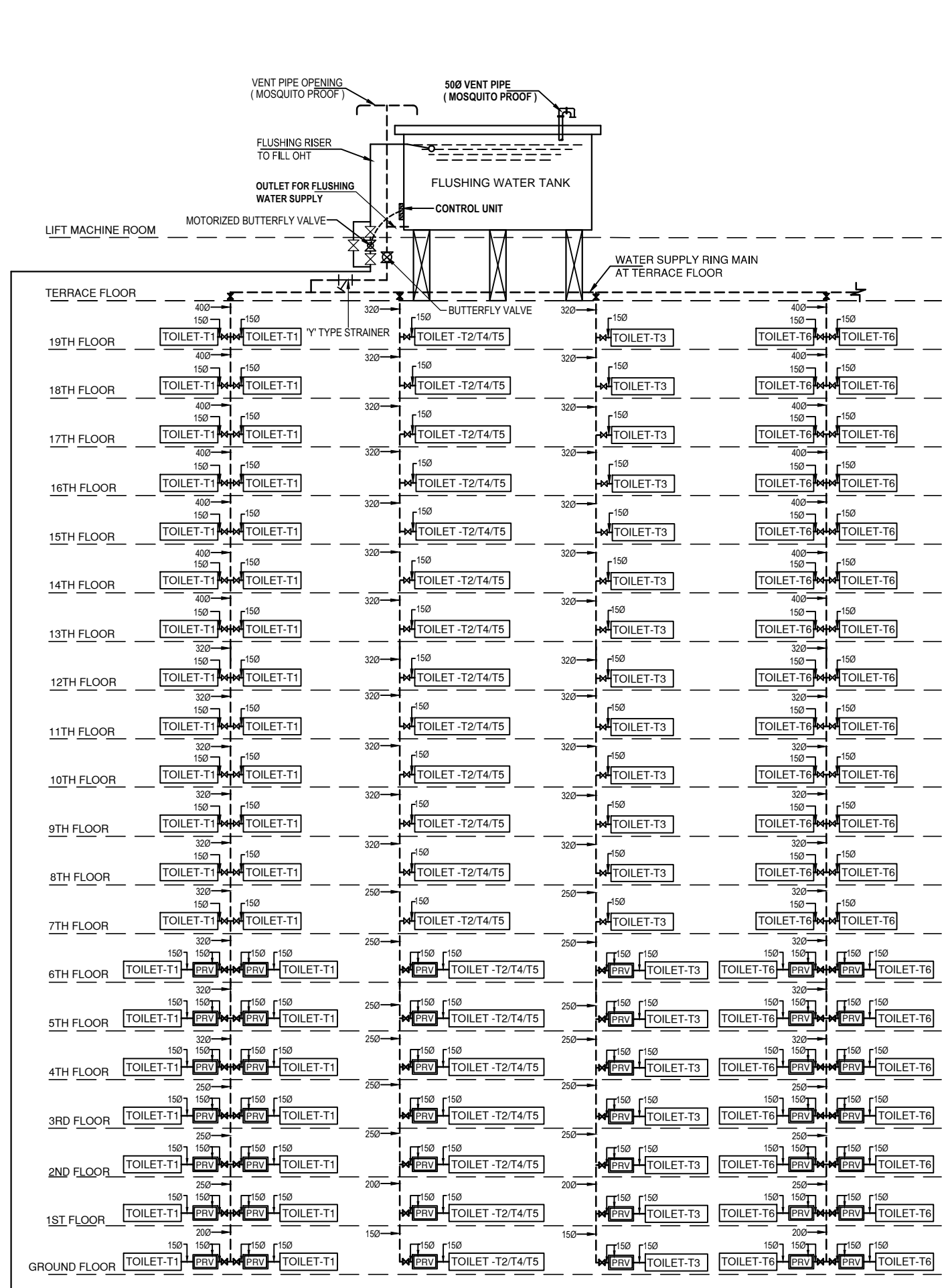
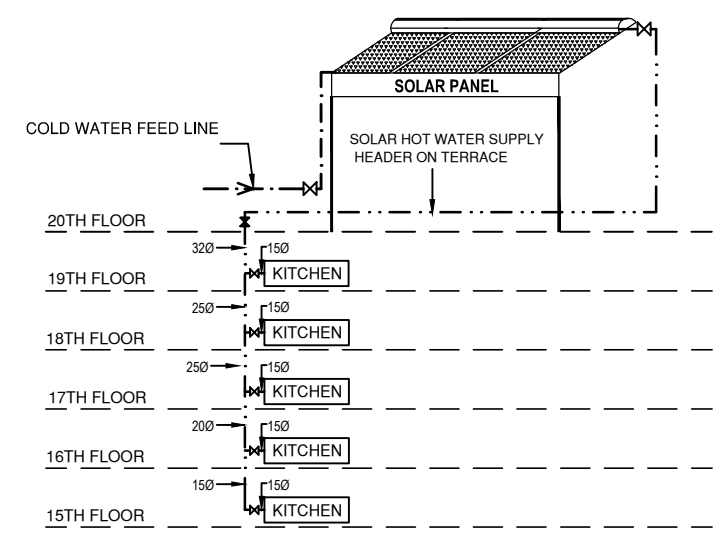
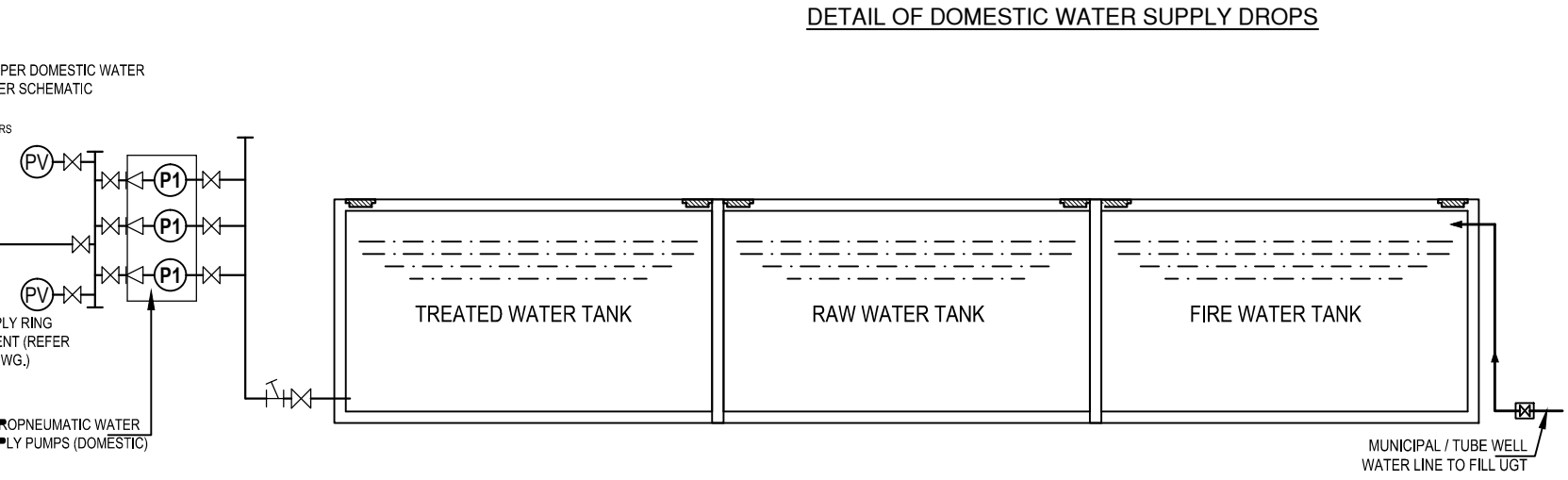
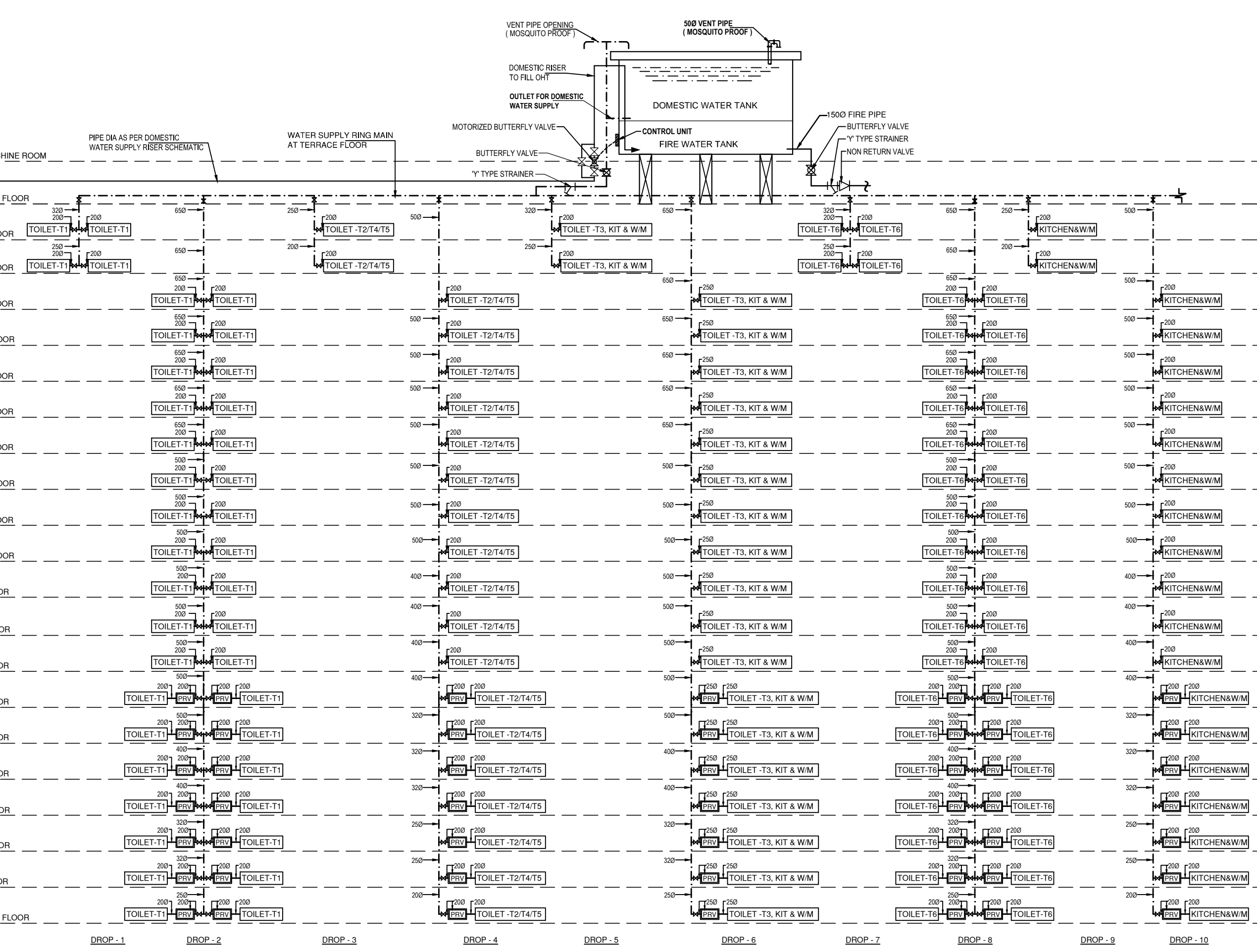
LEGEND : ( Plumbing )		
S. No.	SYMBOL	DESCRIPTION
1.	---	DOMESTIC WATER SUPPLY PIPE
2.	---	FLUSHING WATER SUPPLY PIPE
3.	---	SOLAR WATER SUPPLY PIPE
4.	---	BALL VALVE TYPE ISOLATING
5.	---	NON RETURN VALVE
6.	---	Y TYPE STRAINER
7.	PRV	PRESSURE REDUCING VALVE

NOTES : ( Plumbing )		
1) MATERIAL SUGGESTED :-		
A) PUMP ROOM (INSIDE)	-	GI
B) FOR BASEMENT	-	GI
C) OVER HEAD TANK TO TERRACE LEVEL	-	GI
D) FOR COLD WATER SUPPLY PIPE :-		
a) FOR INSIDE TOILET (DOMESTIC)	-	CP
b) FOR INSIDE TOILET (RECYCLE)	-	UP
c) FOR DUCT	-	FIT
d) FOR TERRACE	-	UP
E) FOR HOT WATER SUPPLY PIPE :-		
a) FOR INSIDE TOILET	-	CP
b) FOR DUCT / TERRACE	-	CP
F) PRV OUTLET PRESSURE SHOULD SET AT 10 METR	-	CEI

R - 1	10/05/2017	PRV Post
rev. no.	date	
project		
ARIHANT AMBER AT NOIDA EXTN. , INDIA		
title		
PLUMBING DRAWING ( TOWER-B )		
subtitle		
WATER SUPPLY SYSTEM		
drawing released for		
<input type="checkbox"/> APPROVAL <input type="checkbox"/>		
<input type="checkbox"/> ADVANCE COPY <input checked="" type="checkbox"/>		
drg. no.		
ARIHANT AMBA / TOWER-B / P-97		
scale		
N.T.S.		
date		
November - 2016		
Architects :		
DEEPAK MEHTA & ASSOC		
ARCHITECTS, PLANNERS, VALUERS, LANDSCAPE &		
PLOT NO. 16 ABHISHEK PLAZA L.S.C. MAYUR VIHAR		
PH: 65272180 TELEFAX: 22770180		
services consultant		
Consummate Engineering		







NO.	SYMBOL	DESCRIPTION
1.	---	DOMESTIC WATER SUPPLY PIPE
2.	---	FLUSHING WATER SUPPLY PIPE
3.	---	SOLAR WATER SUPPLY PIPE
4.	---	BALL VALVE TYPE ISOLATING VALVE
5.	---	NON RETURN VALVE
6.	---	Y TYPE STRAINER
7.	PRV	PRESSURE REDUCING VALVE

- NOTES : ( Plumbing )**
- 1) **MATERIAL SUGGESTED :-**
- A) PUMP ROOM (INSIDE) - G
  - B) FOR BASEMENT - G
  - C) OVER HEAD TANK TO TERRACE LEVEL - G
  - D) FOR COLD WATER SUPPLY PIPE :-
    - a) FOR INSIDE TOILET (DOMESTIC) - C
    - b) FOR INSIDE TOILET (RECYCLE) - U
    - c) FOR DUCT - U
    - d) FOR TERRACE - U
  - E) FOR HOT WATER SUPPLY PIPE :-
    - a) FOR INSIDE TOILET - C
    - b) FOR DUCT / TERRACE - C
  - F) PRV OUTLET PRESSURE SHOULD SET AT 10 ME

R - I	10/05/2017	PRV Pos
rev. no.	date	
project		
ARIHANT AMBER AT NOIDA EXTN., INDIA		
title		
PLUMBING DRAWING ( T		
subtitle		
WATER SUPPLY SYSTEM		
drawing released for		
<input type="checkbox"/> APPROVAL <input type="checkbox"/>		
<input type="checkbox"/> ADVANCE COPY <input checked="" type="checkbox"/>		
drg. no.	ARIHANT AMBA / TOWER-D / P-07	draw
scale	N.T.S.	desig
date	January 2017	chec
Architects :		
DEEPAK MEHTA & ASSO		
ARCHITECTS, PLANNERS, VALUERS, LANDSCAPE		
PLOT NO. 16 ABHISHEK PLAZA L.S.C. MAYUR VIH		
PH: 65272180 TELEFAX: 22770180		
services consultant		
Consummate Engineering		
Noida Office : B - 67, Sect		
Tel : (0120) 6843500 / 30 L		
Lko. Office : R 006, Rohtar		