

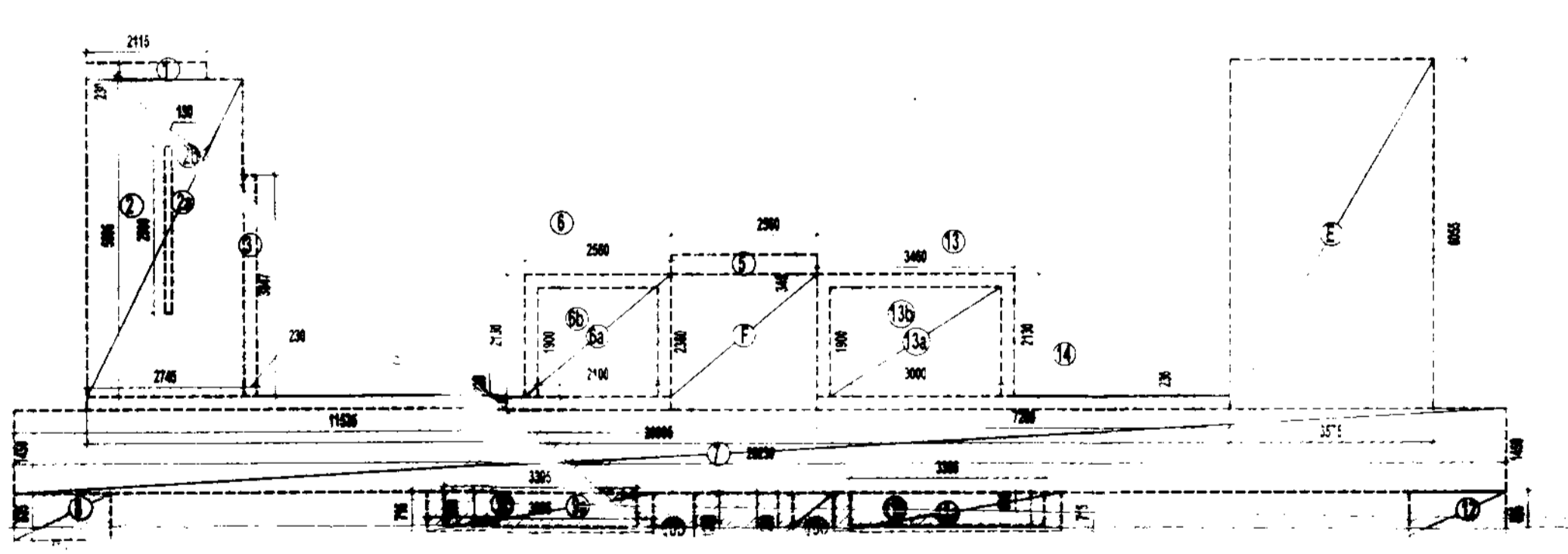
AREA DIAGRAM FOR TYPE - A

F.A.R. COVERED AREA CALCULATION FOR TYPE-A UNIT				EA (SQ.M)
S.NO.	PARTICULARS			AP
1	3.465 X 0.515	=		1.784
2	6.67 X 4.180	=		27.881
3	6.110 X 1.57	=		9.593
4	2.750 X 6.055	=		16.651
5	1.325 X 1.825	=		2.418
6	1.47 X 0.345	=		0.507
7	1.46 X 0.02	=		0.029
8	1.46 X 0.6	=		0.876
TOTAL F.A.R. AREA OF UNIT-A				59.740

NON F.A.R. AREA OF BALCONY (A)				EA (SQ.M)
Y1				
Y1	0.115 X 0.830	=		0.096
Y2	1.745 X 0.515	=		0.899
Y3	3.750 X 0.865	=		3.244
Y4	0.105 X 0.245	=		0.026
Y5	1.200 X 1.710	=		2.052
TOTAL(A)				6.316

GROUND COVERAGE AREA OF - A = F.A.R. AREA + NON F.A.R.  
= 59.740 + 6.316 SQMT  
= 66.056 SQMT

TYPICAL FLOOR F.A.R. AREA = TYPE - A X (4) + TYPE - B X (4) + CIRCULATION AREA  
= ( 59.740 X4) + ( 73.131 X4) + 73.873  
= 238.96 + 292.524 + 73.873  
= 605.357 SQMT



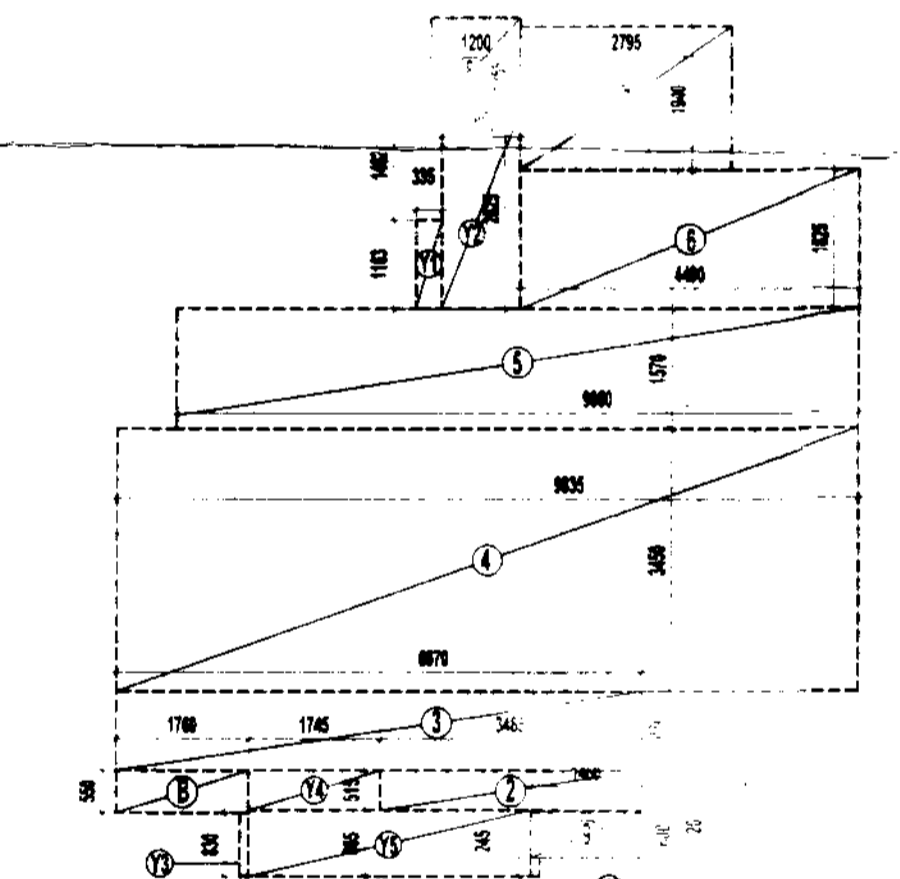
TYPICAL FLOOR AREA DIAGRAM FOR CIRCULATION

AREA DIAGRAM FOR LOFT AREA UNIT - (A & B)  
AREA CALCULATION 1.950 X 1.000 = 1.950 SQMT

F.A.R. COVERED AREA CALCULATION FOR CIRCULATION				AREA SQ.M
S.NO.	PARTICULARS			
1	2.15 X 1.2	=		2.58
2	2.745 X 1.56	=		4.282
3	1.715 X 1.9	=		3.277
4	1.225 X 1.84	=		2.254
5	11.536 X 0.22	=		2.537
6	2.56 X 0.345	=		0.883
7	2.56 X 0.6	=		1.536
8	2.56 X 1.2	=		3.072
9	3.955 X 1.774	=		7.014
10	3.955 X 1.5	=		5.933
11	10.106 X 10.106	=		102.132
12	3.75 X 2.14	=		8.025
13	0.715 X 1.2	=		0.858
14	1.96 X 1.2	=		2.352
15	3.96 X 1.2	=		4.752
16	0.96 X 0.8	=		0.768
17	1.1 X 1.2	=		1.32
18	1.1 X 1.2	=		1.32
19	1.1 X 1.2	=		1.32
20	1.1 X 1.2	=		1.32
21	1.1 X 1.2	=		1.32
22	1.1 X 1.2	=		1.32
23	1.1 X 1.2	=		1.32
24	1.1 X 1.2	=		1.32
25	1.1 X 1.2	=		1.32
26	1.1 X 1.2	=		1.32
27	1.1 X 1.2	=		1.32
28	1.1 X 1.2	=		1.32
29	1.1 X 1.2	=		1.32
30	1.1 X 1.2	=		1.32
31	1.1 X 1.2	=		1.32
32	1.1 X 1.2	=		1.32
33	1.1 X 1.2	=		1.32
34	1.1 X 1.2	=		1.32
35	1.1 X 1.2	=		1.32
36	1.1 X 1.2	=		1.32
37	1.1 X 1.2	=		1.32
38	1.1 X 1.2	=		1.32
39	1.1 X 1.2	=		1.32
40	1.1 X 1.2	=		1.32
41	1.1 X 1.2	=		1.32
42	1.1 X 1.2	=		1.32
43	1.1 X 1.2	=		1.32
44	1.1 X 1.2	=		1.32
45	1.1 X 1.2	=		1.32
46	1.1 X 1.2	=		1.32
47	1.1 X 1.2	=		1.32
48	1.1 X 1.2	=		1.32
49	1.1 X 1.2	=		1.32
50	1.1 X 1.2	=		1.32
51	1.1 X 1.2	=		1.32
52	1.1 X 1.2	=		1.32
53	1.1 X 1.2	=		1.32
54	1.1 X 1.2	=		1.32
55	1.1 X 1.2	=		1.32
56	1.1 X 1.2	=		1.32
57	1.1 X 1.2	=		1.32
58	1.1 X 1.2	=		1.32
59	1.1 X 1.2	=		1.32
60	1.1 X 1.2	=		1.32
61	1.1 X 1.2	=		1.32
62	1.1 X 1.2	=		1.32
63	1.1 X 1.2	=		1.32
64	1.1 X 1.2	=		1.32
65	1.1 X 1.2	=		1.32
66	1.1 X 1.2	=		1.32
67	1.1 X 1.2	=		1.32
68	1.1 X 1.2	=		1.32
69	1.1 X 1.2	=		1.32
70	1.1 X 1.2	=		1.32
71	1.1 X 1.2	=		1.32
72	1.1 X 1.2	=		1.32
73	1.1 X 1.2	=		1.32
74	1.1 X 1.2	=		1.32
75	1.1 X 1.2	=		1.32
76	1.1 X 1.2	=		1.32
77	1.1 X 1.2	=		1.32
78	1.1 X 1.2	=		1.32
79	1.1 X 1.2	=		1.32
80	1.1 X 1.2	=		1.32
81	1.1 X 1.2	=		1.32
82	1.1 X 1.2	=		1.32
83	1.1 X 1.2	=		1.32
84	1.1 X 1.2	=		1.32
85	1.1 X 1.2	=		1.32
86	1.1 X 1.2	=		1.32
87	1.1 X 1.2	=		1.32
88	1.1 X 1.2	=		1.32
89	1.1 X 1.2	=		1.32
90	1.1 X 1.2	=		1.32
91	1.1 X 1.2	=		1.32
92	1.1 X 1.2	=		1.32
93	1.1 X 1.2	=		1.32
94	1.1 X 1.2	=		1.32
95	1.1 X 1.2	=		1.32
96	1.1 X 1.2	=		1.32
97	1.1 X 1.2	=		1.32
98	1.1 X 1.2	=		1.32
99	1.1 X 1.2	=		1.32
100	1.1 X 1.2	=		1.32
TOTAL F.A.R. AREA OF CIRCULATION				73.873

SCHEDULE OF OPENINGS						
S.NO.	TYPE	WIDTH	HEIGHT	CLL	LINTEL	REMARKS
1.	DW1	2370	2500	0300	2500	LIVING ROOM DINING ROOM
2.	DW2	1800	2500	0300	2500	BEDROOM
3.	DW3	1625	2500	0300	2500	BEDROOM
4.	DW4	1300	2500	041250	2500	KITCHEN
5.	D1	1050	2500	-	2500	ENTRANCE
6.	D2	1000	2100	-	2100	BEDROOM
7.	D3	900	2100	-	2100	KITCHEN
8.	D4	800	2100	-	2100	TOILET
9.	D5	1200	2500	-	2500	STAIRCASE
9.	W1	1700	1450	1050	2100	MAIN STAIRCASE
10.	W2	2300	1450	1050	2100	FIRE STAIRCASE
11.	V1	1200	2500	-	-	FIRE RATED DOOR
12.	FD1	600	1000	1500	2500	GLAZED VENTILATOR

AREA CALCULATION TOWARDS 15% ADDITIONAL F.A.R				AREA (SQ.M)
S.NO.	PARTICULARS			
CUPBOARDS				
A	460 X 0.550	=		2.53
B	1750 X 0.550	=		9.625
FIRE STAIRCASE AREA				
E	575 X 6.055	=		3.473
LIFT LOBBY				
F	560 X 2.360	=		1.321
FHC				
10B	200 X 0.715	=		0.143
10C	1200 X 0.715	=		0.858
ELECTRICAL SHAFT				
9b	336 X 0.600	=		0.202
11b	336 X 0.600	=		0.202
LIFT WELL				
9b	2100 X 1.900	=		3.990
13a	3000 X 1.900	=		5.700
LOFT AREA				
G	1950 X 1.000	=		1.950
TOTAL AREA				65.852



AREA DIAGRAM FOR TYPE - B

F.A.R. COVERED AREA CALCULATION FOR TYPE-B UNIT				AREA
S.NO.	PARTICULARS			
1	1.460 X 0.020	=		0.029
2	3.465 X 0.515	=		1.784
3	6.970 X 1.030	=		7.179
4	9.000 X 0.020	=		0.180
5	4.490 X 1.825	=		8.194
6	2.795 X 1.940	=		5.422
7	1.200 X 1.255	=		1.506
8	1.460 X 0.600	=		0.876
TOTAL F.A.R. AREA OF UNIT-B				73.131

TOTAL F.A.R. AREA FOR TYPE - B = TYPE (B) AREA  
= 73.131 SQMT

NON F.A.R. AREA OF BALCONY (B)				EA (SQ.M)
Y1				
Y1	0.335 X 1.163	=		0.390
Y2	1.050 X 2.625	=		2.756
Y3	0.115 X 0.830	=		0.096
Y4	1.745 X 0.515	=		0.899
Y5	3.750 X 0.865	=		3.244
Y6	0.115 X 0.245	=		0.028
TOTAL(B)				7.412

GROUND COVERAGE AREA OF - B = F.A.R. AREA + NON F.A.R.  
= 73.131 + 7.412 SQMT  
= 80.543 SQMT

NORTH POINT  
This drawing is a 'COPYRIGHT'...  
Contents of this drawing or part thereof may not be used or reproduced without the permission of the Architect

NO. OF PRINTS	DATE	ISSUED TO	REMARKS

APPROVED  
Date: 30.08.2018  
Value: 3/18/2018  
Drawing Checked & Verified By: [Signature]  
Sr. Ex. (Arch)

Paravallathan  
Industrial Dev. Auth.  
PROVIDED  
Date: 11/08/2018  
Verified By: [Signature]

OWNER SIGN: [Signature]  
APCHT SIGN: [Signature]  
Earthcon Universal Infratech Pvt. Ltd.  
ARCHITECT: VISHAL S. SHARMA  
CA-98/23261  
REGD/64866  
NEW DELHI

OWNER: M/S EARTHCON UNIVERSAL INFRA TECH PVT. LTD.

PROJECT: PROPOSED GROUP HOUSING FOR M/S EARTHCON UNIVERSAL INFRA TECH PVT. LTD. AT PLOT NO. GH - 10, SECTOR - 1, GREATER NODIA, UP.

DATE: 03-02-11  
PROJECT INCH: DEVESH SHAKYA  
CHECKED BY: DEVESH SHAKYA  
SCALE: 1:100  
DEALT BY: R.S.R.  
APPROVED BY: VISHAL SHARMA

DRAWING TITLE: TOWER-B,C,E,H,I & K  
TYPICAL FLOOR PLAN

ARCHITECTS:-  
Confluence Consultancy Services  
E-406, LOWER GROUND, G.K. II, NEW DELHI  
Ph: +91-11-29216006, FAX NO: 011-2916006  
E-MAIL: ccs@confluence.com, confluence.india@gmail.com  
Web site: www.in.confluence.com  
ISO 9001: 2000

DRAWING NO. [Blank] REVISION [Blank]