

**PROJECT TITLE :- VEDIC VILLAGE PHASE-1 EXTENSION**  
**PROPOSED ,REVISED & EXTENSION LAYOUT PLAN OF**  
**M/S ANUSHNAN BUILDERS AND DEVELOPERS PVT. LTD.**  
**SITUATED AT BAIRISALPUR, NIGOHA.**  
**DISTRICT- LUCKNOW.**  
**DIRECTOR- MR. ARUN PRATAP SINGH S/O**  
**SHREE ASHOK SINGH**

**AREA STATEMENT:-**

1-	TOTAL LAND AREA - 22032.03 SQMT.
2-	FUTURE EXTENSION-1 AREA = 677.10 SQMT. FUTURE EXTENSION-2 AREA = 482.55 SQMT. TOTAL FUTURE EXTENSION AREA (1+2) = (1159.65 SQMT.)
3-	ROAD WIDENING AREA - 253.63 SQMT.
4-	NET LAND AREA FOR PROJECT- 20618.75 SQMT.
5-	TOTAL PLOTTED AREA - 11055.01 SQMT. (53.62 %)
6-	TOTAL ROAD AREA - 6163.32 SQMT. (29.89 %)
7-	TOTAL GREEN AREA - 3400.42 SQMT. (16.49%)

**PREVIOUS SANCTION AREA**

S.NO.	KHASRA NO.	AREA (SQMT.)	VILLAGE
1.	465(PART)	1603.40 SQMT.	BAIRISALPUR
2.	465(PART)	1780.00 SQMT.	BAIRISALPUR
3.	506	7800.00 SQMT.	BAIRISALPUR
4.	508(PART)	1300.00 SQMT.	BAIRISALPUR
5.	466KHA (PART)	253.63 SQMT.	BAIRISALPUR

TOTAL AREA - 12737.03 SQMT.

**PRESENT REVISED & EXTENSION AREA**

S.NO.	KHASRA NO.	AREA (SQMT.)	VILLAGE
1.	465(PART)	1603.40 SQMT.	BAIRISALPUR
2.	465(PART)	1780.00 SQMT.	BAIRISALPUR
3.	506	7800.00 SQMT.	BAIRISALPUR
4.	508(PART)	1300.00 SQMT.	BAIRISALPUR
5.	466KHA (PART)	253.63 SQMT.	BAIRISALPUR
6.	505 KA	1070.00 SQMT.	BAIRISALPUR
7.	510 (PART)	8225.00 SQMT.	BAIRISALPUR

TOTAL AREA - 22032.03 SQMT. (2.203203 HECT.)

BOUNDARY WALL LENGTH- 912.39 RUM.  
BOUNDARY WALL HEIGHT- 2.1 MTR.

**TREE CALCULATIONS-**  
 50 TREES REQUIRED/HECTARE  
 TREES REQUIRED TO BE PLANTED - 50 X 2.203203 =110.16 NO.  
 TREES REQUIRED TO BE PLANTED - 111 TREES

**LEGENDS OF DRAINAGE-**

- WATER LINE - 50 DIA
- SEWER LINE - 300/200/150
- ELECTRICAL POLE - 9.0 MT.R.C.C. ROAD - BITUMINOUS ROAD
- TRANSFORMER
- NO. OF TREES - 111
- NP. MAIN HOLE
- UGT UNDER GROUND TANK
- SHOWN THIS PREVIOUS SANCTION AREA

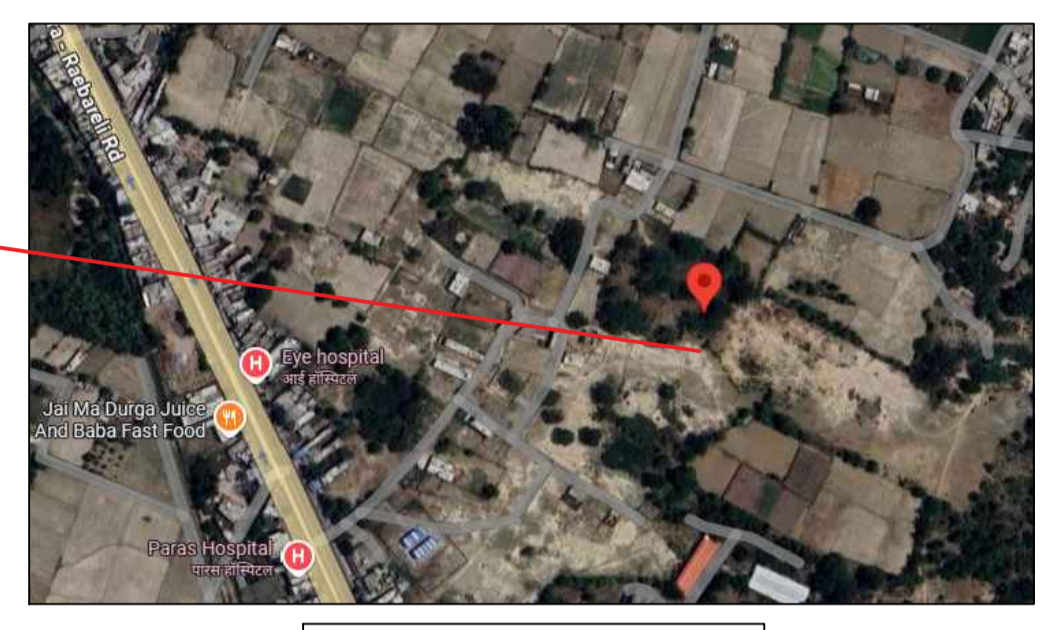
**TITLE : SUBMISSION PLAN**

**NOTE:-**  
 THIS MAP HAS BEEN PREPARED AS PER  
 JILA PANCHAYAT BY LAWS 3315/21A-06/2021-22  
 DATED- 28/10/2025

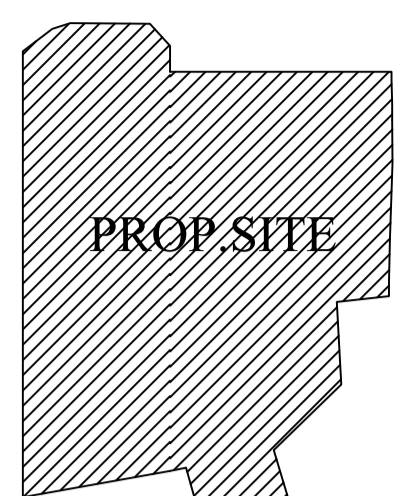
OWNER SIGN : \_\_\_\_\_ NORTH

ARCHITECT / ENGINEER SIGN.

PROPOSED SITE



**GEO LOCATION**  
 LAT.- 26.557047213630483,  
 LONG.- 81.04674071370135

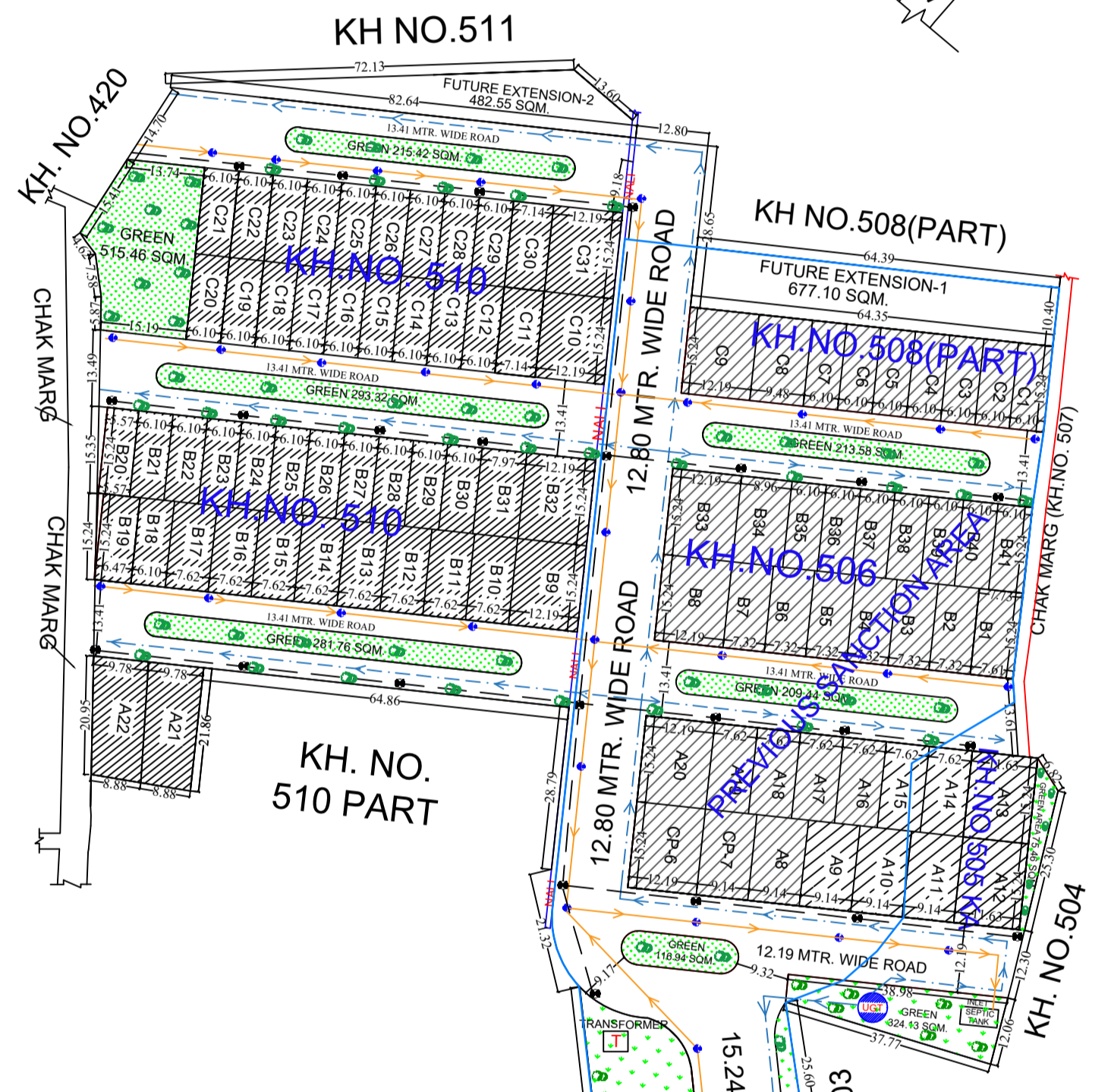


**KEY PLAN**  
 (SCALE -1:1000)

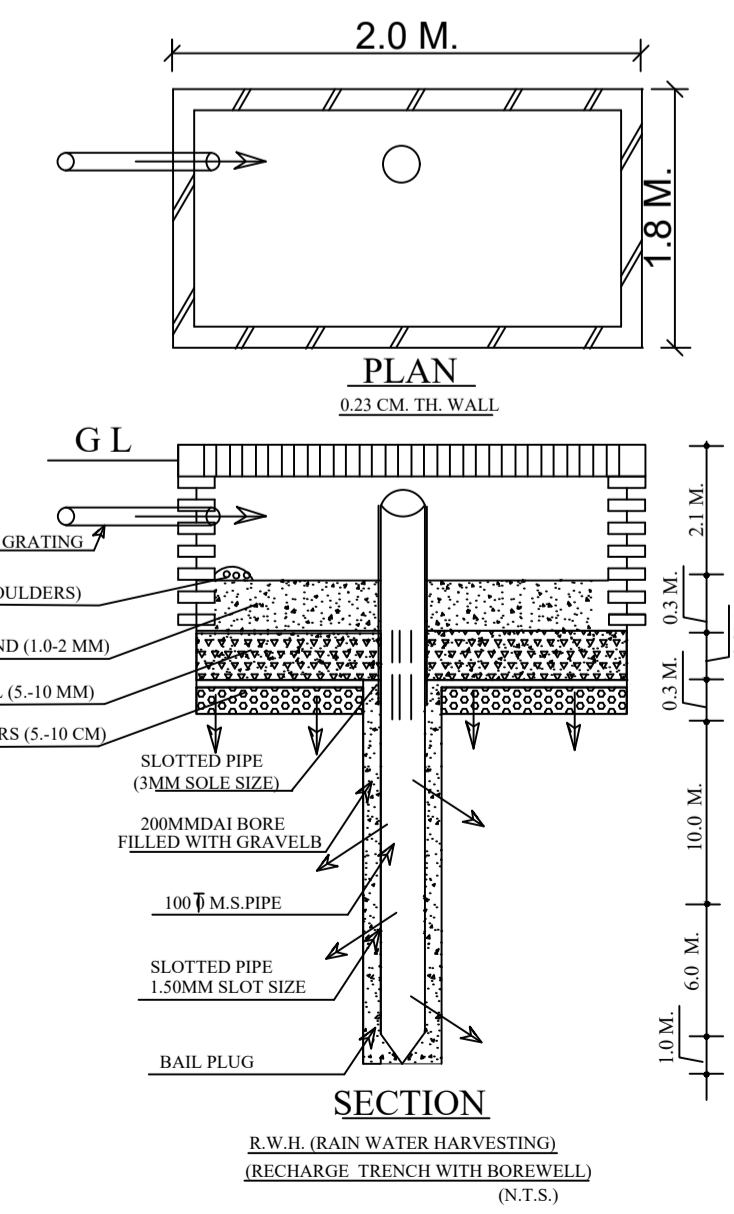
S/NO	PLOT NO.	NO.OF PLOT	SIZE	AREA (SQM.)	TOTAL AREA (SQM.)	COLOUR CODE
1-	A8,A9,A10,A11	4	9.14 X 15.24	139.35 SQM.	557.40 SQM.	
2-	A12,A13	2	11.63 X 15.24	177.24 SQM.	354.48 SQM.	
3-	A14,A15,A16,A17, A18,A19,B10,B11, B12,B13,B14,B15, B16,B17	14	7.62 X 15.24	116.13 SQM.	1625.82 SQM.	
4-	A20,B8,B9,B32,B33, C9,C10,C31	8	12.19 X 15.24	185.81 SQM.	1486.48 SQM.	
5-	A21	1	-	201.39 SQM.	201.39 SQM.	
6-	A22	1	-	196.53 SQM.	196.53 SQM.	
7-	B1	1	-	116.97 SQM.	116.97 SQM.	
8-	B2,B3,B4,B5,B6,B7	6	7.32 X 15.24	111.48 SQM.	668.88 SQM.	
9-	B18,B21,B22,B23, B24,B25,B26,B27, B28,B29,B30,B35, B36,B37,B38,B39, B40,B41,C1,C2,C3, C4,C5,C6,C7,C12, C13,C14,C15,C16, C17,C18,C19,C20, C21,C22,C23,C24, C25,C26,C27,C28, C29	43	6.10 X 15.24	92.90 SQM.	3994.70 SQM.	
10-	B19	1	6.47 X 15.24	98.60 SQM.	98.60 SQM.	
11-	B20	1	5.57 X 15.24	84.88 SQM.	84.88 SQM.	
12-	B31	1	7.97 X 15.24	121.46 SQM.	121.46 SQM.	
13-	B34	1	8.96 X 15.24	136.55 SQM.	136.55 SQM.	
14-	C8	1	9.48 X 15.24	144.47 SQM.	144.47 SQM.	
15-	C11,C30	2	7.14 X 15.24	108.82 SQM.	217.64 SQM.	
16-	CP-1 (COMMERCIAL PLOT)	1	-	723.60 SQM.	723.60 SQM.	
17-	CP-6 (COMMERCIAL PLOT)	1	12.19 X 15.24	185.81 SQM.	185.81 SQM.	
18-	CP-7 (COMMERCIAL PLOT)	1	9.14 X 15.24	139.35 SQM.	139.35 SQM.	
TOTAL PLOT				90	11055.01 SQM.	



**WATER SUPPLY PLAN**  
 SCALE ( 1:500)



**SITE PLAN**  
 SCALE-1:500



**R.W.H. (RAIN WATER HARVESTING) (RECHARGE TRENCH WITH BOREWELL) (N.T.S.)**