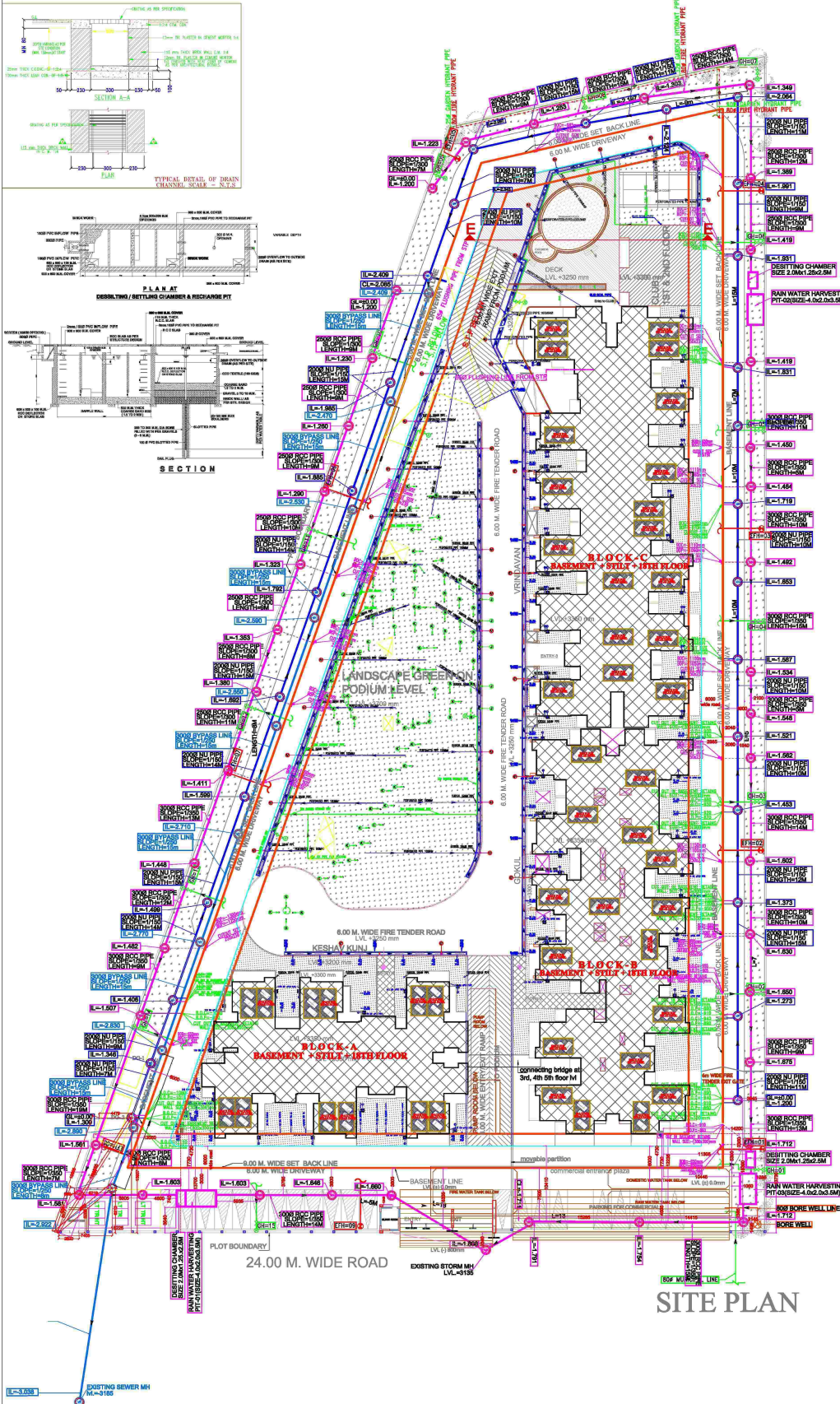
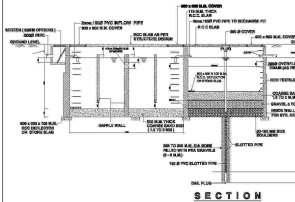
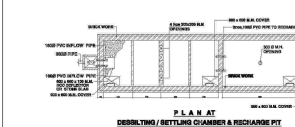
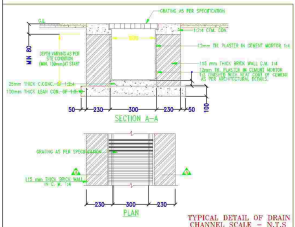


STANDARD CATCH BASIN SIZE & DEPTH	
CATCH BASIN SIZE	DEPTH
CB-450x450MM	0.45M-0.6M
CB-600x600MM	0.6M-0.75M
CB-750x750MM	0.75M-0.9M
CB-900x900MM	0.9M-1.5M

STANDARD MANHOLE SIZE & DEPTH	
MANHOLE SIZE	DEPTH
MH-900x800MM	0.45M-0.9M
MH-910ø	0.9M-1.65M
MH-1220ø	1.65M-2.3M
MH-1520ø	ABOVE-2.3M



1. SEWERAGE MANHOLE	○
2. DRAINAGE MANHOLE	○
4. CATCH BASIN (400x400)	■
4A. CATCH BASIN (600x600)	■
4B. CATCH BASIN (750x750)	■
4C. CATCH BASIN (900x900)	■
6. SEWERAGE PIPE LINE	—
6. DRAINAGE PIPE LINE	—
7. WASTE PIPE IN BASEMENT CEILING	—
8. SOIL PIPE IN BASEMENT CEILING	—
9. BALCONY WASTE PIPE IN BASEMENT CEILING	—
10. RAIN WATER PIPE IN BASEMENT CEILING	—
11. BORE WELL	○
12. YARD HYDRANT	○
13. GARDEN HYDRANT	○

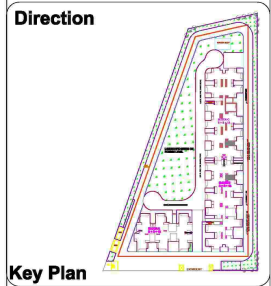
LEGEND

SYMBOL	DESCRIPTION
○	110 OD uPVC PIPE FOR PODIUM SURFACE WATER
○	160 OD uPVC PIPE FOR PODIUM DRAINAGE
○	110 OD uPVC PIPE FOR PODIUM SUBSOIL WATER FOR GREEN AREA IN FLAT
○	300ø SLEEVE
○	100ø SLEEVE
○	150ø SLEEVE FOR PODIUM TOE WALL

EXTERNAL FIRE HYDRANT(EFH=80ø) --- BOP=850mm
 BOC=300mm
 GARDEN HYDRANT(GH=25ø) --- BOP=800mm
 BOC=850mm

PLUMBING LEGEND:

□	RAIN WATER HARVESTING
□	SPACE FOR SOLAR PANEL



PROJECT:
DRAWING FOR THE GROUP HOUSING PROJECT AT PLOT NO.GC-03JGH-03, SECTOR 16C GREATER NOIDA.

OWNER:
M/S. PRITHVILINK BUILDWELL (P) L.T.D. THROUGH DIRECTOR-M. BHARAT GOYAL

OWNER SIGN: _____ ARCHITECT SIGN: _____

DRAWING TITLE: **PLAN OF DEVELOPMENT OF WORK**

Design Services

ANUJ AGARWAL ARCHITECTS
 OFFICE: A-24 KAUSHAMBI CHAZABAD (U.P.)
 Ph-9100-464185, 418712, TEL. FAX-2773892
 e-mail: anu.agarwal@gmail.com

SCALE: _____ DEALY BY: _____ CHECKED BY: _____ DATE: _____ DRG. No: **DG-01**