

**DOOR WINDOW SCHEDULE**

Sl. No.	Item	Quantity	Remarks
1	Door	100	
2	Window	200	
3	Door	50	
4	Window	100	
5	Door	20	
6	Window	40	
7	Door	10	
8	Window	20	
9	Door	5	
10	Window	10	
11	Door	2	
12	Window	4	
13	Door	1	
14	Window	2	
15	Door	0.5	
16	Window	1	
17	Door	0.2	
18	Window	0.4	
19	Door	0.1	
20	Window	0.2	

It is to be noted that the area of the building is as per the approved plan.

*(Signature)*

*(Signature)*

*(Signature)*

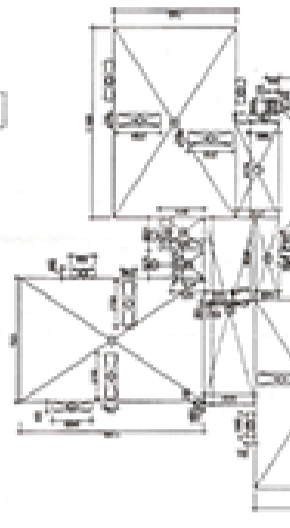
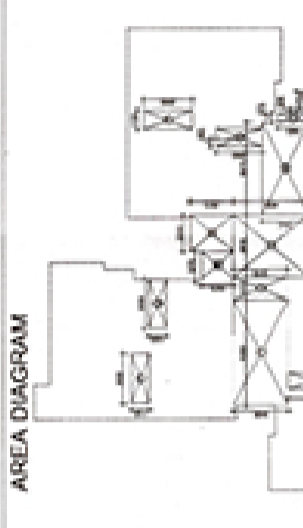


Quantity of work as per approved plan.

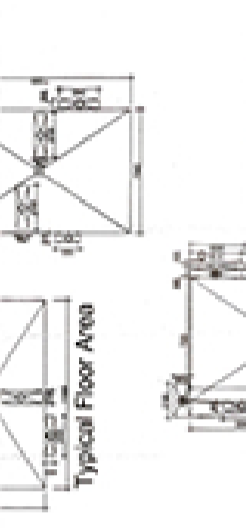
It is to be noted that the area of the building is as per the approved plan.



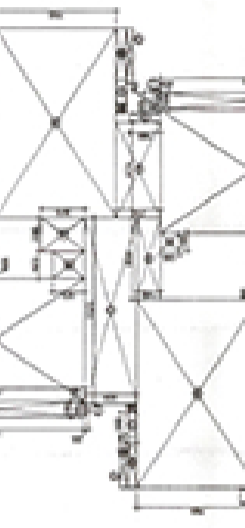
Mummy & Machine Room Area



Typical Floor Area



Ground Coverage



Mummy & Machine Room Area

AREA STATEMENT

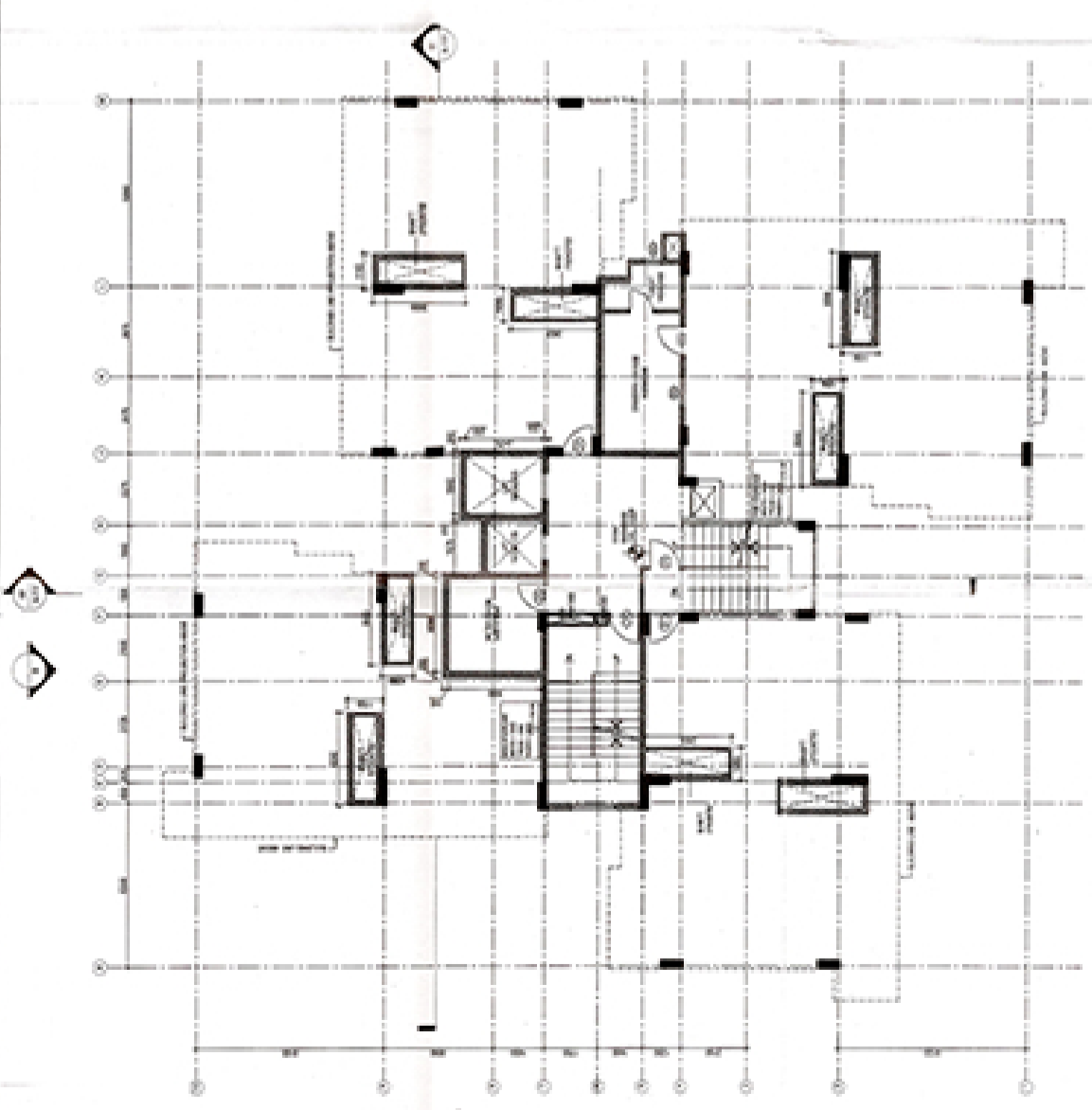
- GROUND COVERAGE: 482.03 SQM
- STILT FLOOR AREA: 18.48 SQM
- STAIRCASE + LIFT + RAC: 30.13 SQM
- STILT FLOOR FOR FM AREA: 287.71 SQM
- TOTAL AREA OF ONE UNIT: 267.11 SQM
- FIRST TO FORTENTH FLOORS: 1008.14 SQM
- MURTY + MACHINE ROOM: 127.22 SQM
- STILT + FIRST TO TWELVEN FLOOR: 482.03 SQM
- TOTAL SQM: 1605.14 SQM

AREA CHART

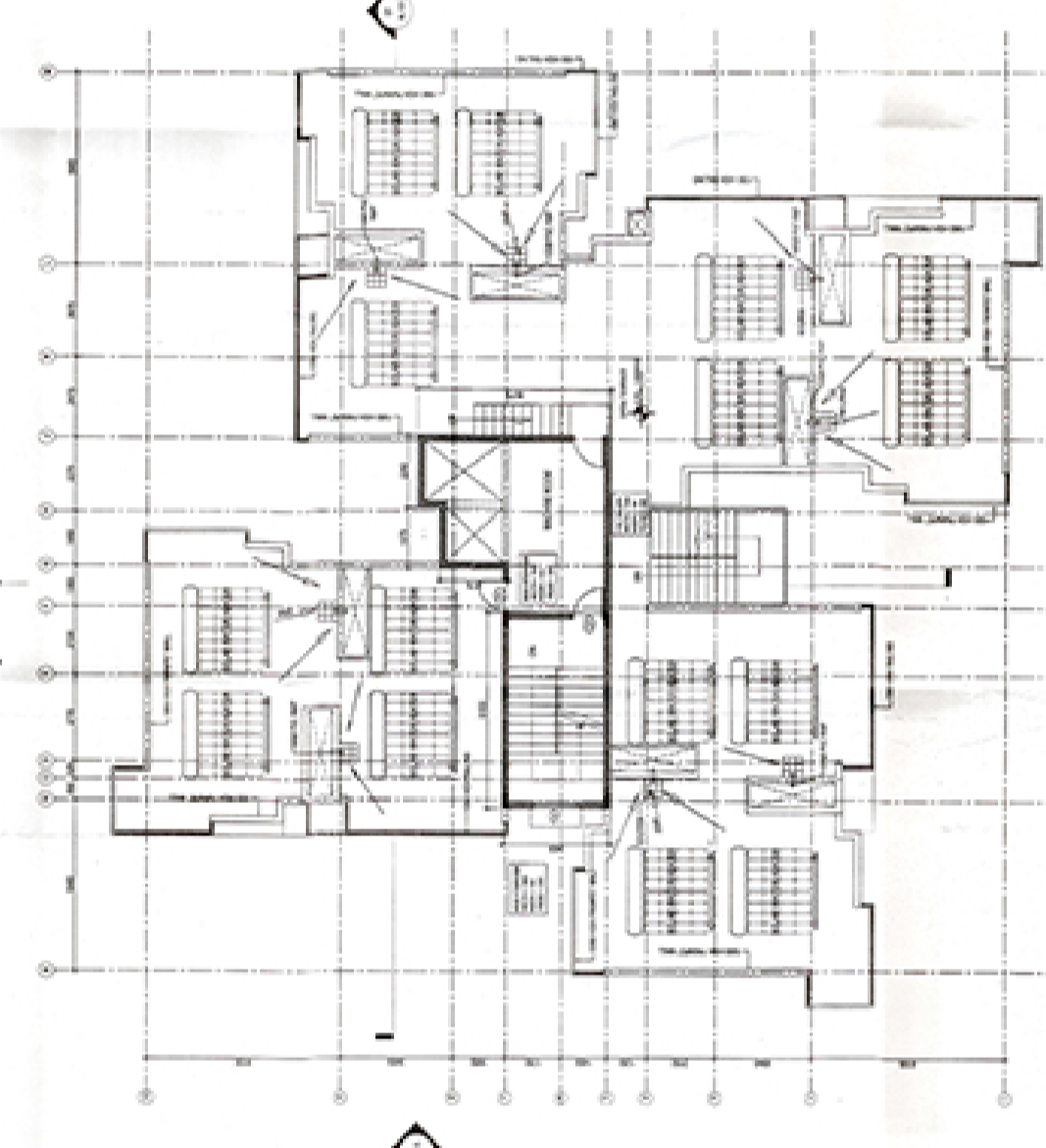
FLOOR	Area (SQM)	Total Area (SQM)
1	482.03	482.03
2	18.48	499.51
3	30.13	529.64
4	30.13	559.77
5	30.13	589.90
6	30.13	619.03
7	30.13	649.16
8	30.13	679.29
9	30.13	709.42
10	30.13	739.55
11	30.13	769.68
12	30.13	800.00
13	30.13	830.13
14	30.13	860.26
15	30.13	890.39
16	30.13	920.52
17	30.13	950.65
18	30.13	980.78
19	30.13	1010.91
20	30.13	1041.04
21	30.13	1071.17
22	30.13	1101.30
23	30.13	1131.43
24	30.13	1161.56
25	30.13	1191.69
26	30.13	1221.82
27	30.13	1251.95
28	30.13	1282.08
29	30.13	1312.21
30	30.13	1342.34
31	30.13	1372.47
32	30.13	1402.60
33	30.13	1432.73
34	30.13	1462.86
35	30.13	1492.99
36	30.13	1523.12
37	30.13	1553.25
38	30.13	1583.38
39	30.13	1613.51
40	30.13	1643.64
41	30.13	1673.77
42	30.13	1703.90
43	30.13	1734.03
44	30.13	1764.16
45	30.13	1794.29
46	30.13	1824.42
47	30.13	1854.55
48	30.13	1884.68
49	30.13	1914.81
50	30.13	1944.94
51	30.13	1975.07
52	30.13	2005.20
53	30.13	2035.33
54	30.13	2065.46
55	30.13	2095.59
56	30.13	2125.72
57	30.13	2155.85
58	30.13	2185.98
59	30.13	2216.11
60	30.13	2246.24
61	30.13	2276.37
62	30.13	2306.50
63	30.13	2336.63
64	30.13	2366.76
65	30.13	2396.89
66	30.13	2427.02
67	30.13	2457.15
68	30.13	2487.28
69	30.13	2517.41
70	30.13	2547.54
71	30.13	2577.67
72	30.13	2607.80
73	30.13	2637.93
74	30.13	2668.06
75	30.13	2698.19
76	30.13	2728.32
77	30.13	2758.45
78	30.13	2788.58
79	30.13	2818.71
80	30.13	2848.84
81	30.13	2878.97
82	30.13	2909.10
83	30.13	2939.23
84	30.13	2969.36
85	30.13	2999.49
86	30.13	3029.62
87	30.13	3059.75
88	30.13	3089.88
89	30.13	3119.91
90	30.13	3150.04
91	30.13	3180.17
92	30.13	3210.30
93	30.13	3240.43
94	30.13	3270.56
95	30.13	3300.69
96	30.13	3330.82
97	30.13	3360.95
98	30.13	3391.08
99	30.13	3421.21
100	30.13	3451.34



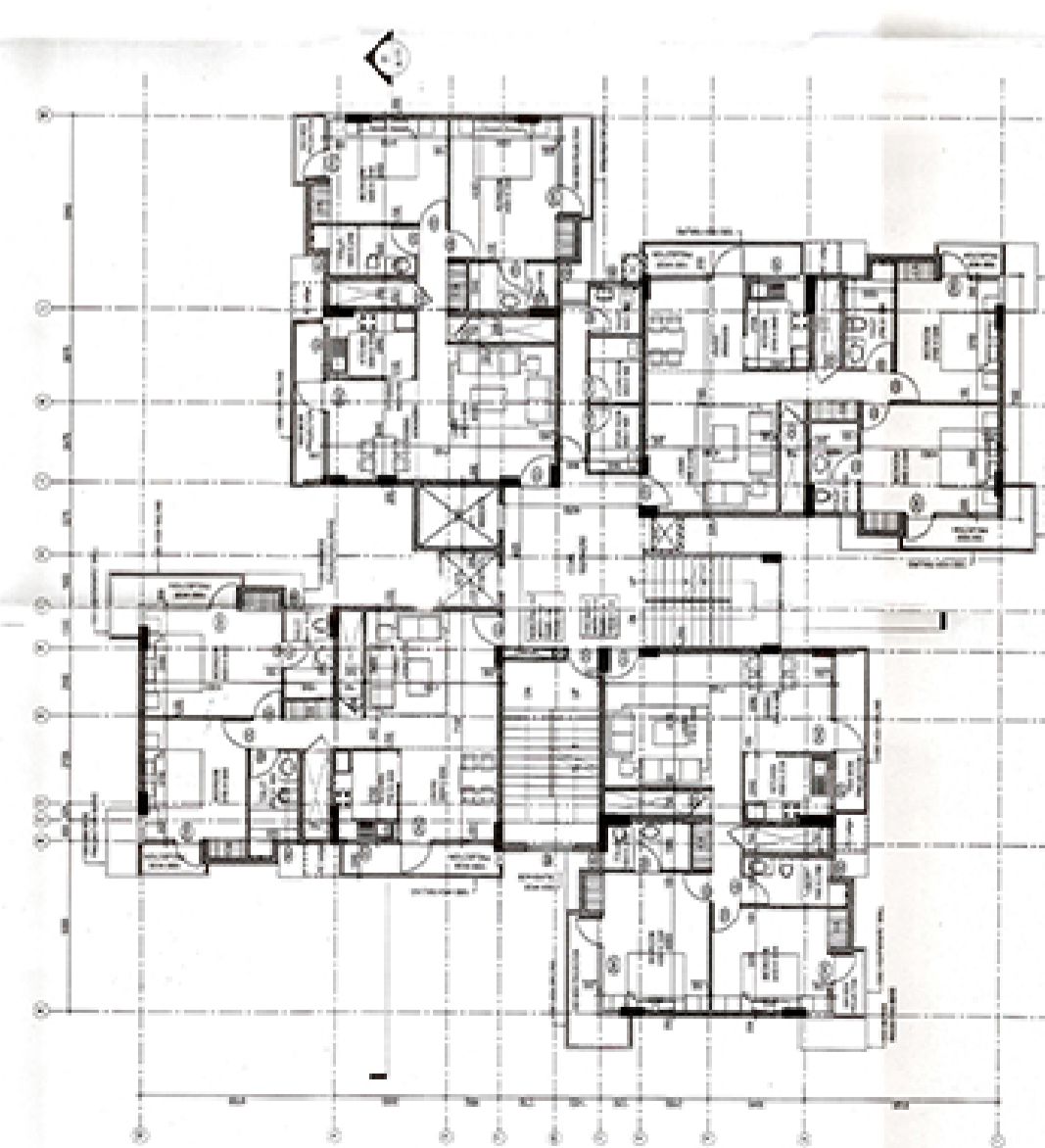
PLAN AT FIRST, THIRD, FIFTH, SEVENTH, NINTH, ELEVENTH, THIRTEENTH FLOORS



STILT PLAN



PLAN AT TERRACE LVL



PLAN AT SECOND, FOURTH, SIXTH, EIGHTH, TENTH, TWELVETH & FORTENTH FLOORS

**APPROVED FOR CONSTRUCTION**

**Super Appraisal Architects**

Sri Radha Vinodhan Chandra  
Mandir, Krishna Lila Thume  
Park and Group Housing

Scale: 1:100

Project Name: Krishna Lila Thume Park and Group Housing

Project Location: Krishna Lila Thume Park, Mysore

Project No: KR/2018/100/1000

Project Date: 10/10/2018

Project Status: Approved

Project Type: Apartment Type E

Project Area: 10000 SQM

Project Height: 100 M

Project No: KR/2018/100/1000

Project Date: 10/10/2018

Project Status: Approved

Project Type: Apartment Type E

Project Area: 10000 SQM

Project Height: 100 M