

LEGEND :

S. No.	SYMBOL	DESCRIPTION
1.	M.H.	MANHOLE
2.		SEWER LINE
3.		BASEMENT RETAINING WALL



rev. no.	date	revision

project
PROPOSED GROUP HOUSING
 FOR SAM INDIA ABHIMANYU HOUSING
 AT PLOT NO. GH-02, SECTOR -16-C
 GREATER NOIDA, G.B. NAGAR, U.P.

title
LAYOUT PLAN

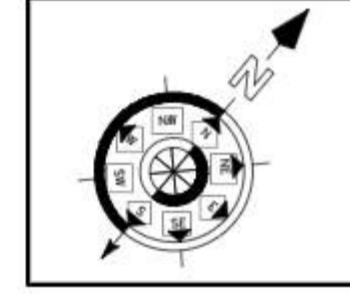
subtitle
EXTERNAL SEWERAGE SYSTEM

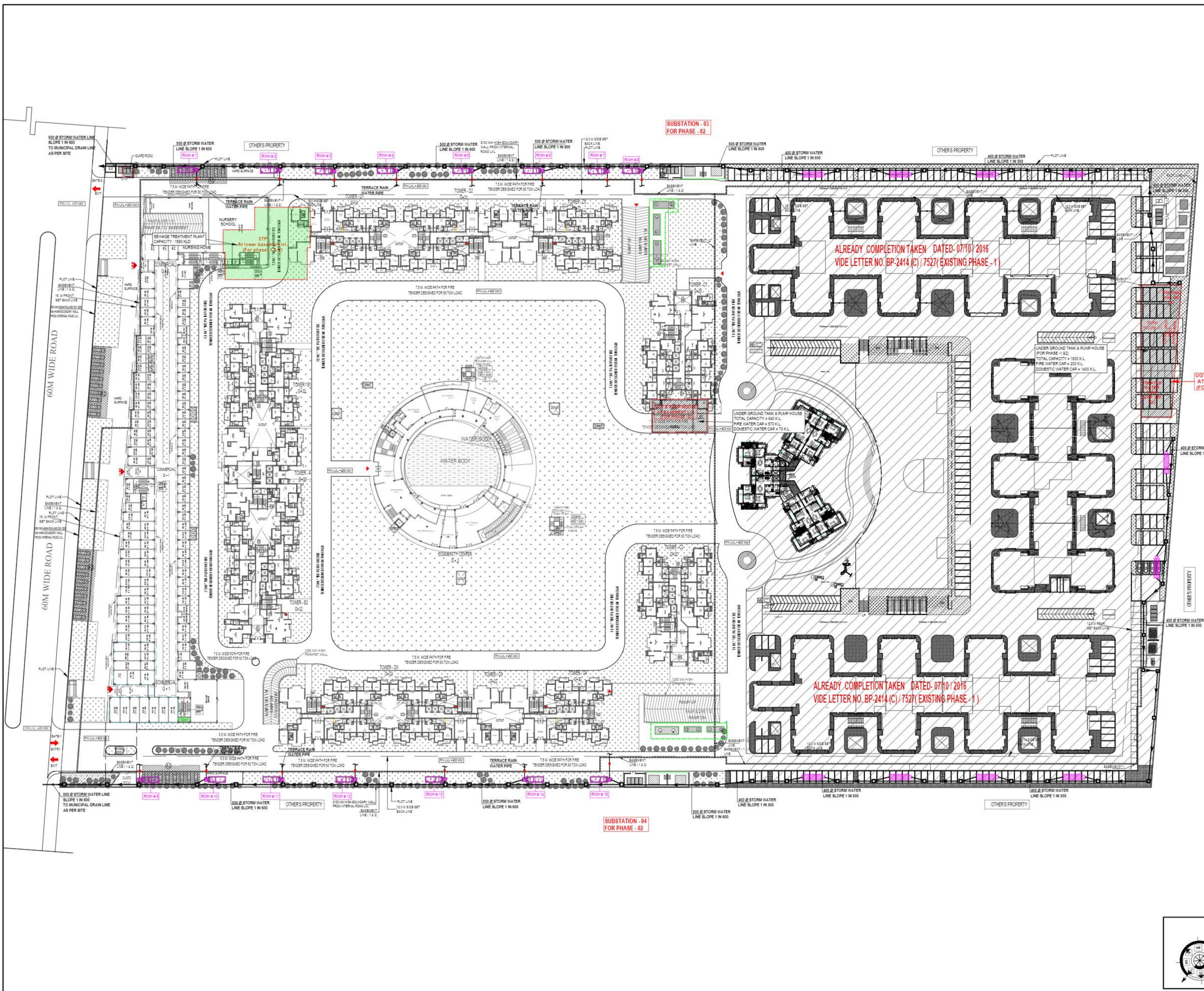
drawing released for
 APPROVAL SUBMISSION
 ADVANCE COPY CONSTRUCTION

drg. no. PO / 10663 / ES - 02 drawn by Prem Saini
 scale 1 : 700 designed by Badri Vishal
 date 17.05.2023 checked by Anand Havelia

architects
Confluence
 architecture, urban design, hospitality, interiors
 Ph- 91-11-48130800, 40544785. oca@confluence.com
 www.confluence.com, Member of IGBC, ISO - 9001 : 2000

services consultant
Consummate Engineering Services (P) Ltd.
cesp
 Noida Office : B-07, Sector - 07, Noida - 201 201
 Lko. Office : R-008, Rohini Phase, Gombi Nagar, Lucknow
 Tel : (0120) 2303500 (30 Lines)
 e mail : mail@cespln, website : www.cespln





LEGEND :

S. No.	SYMBOL	DESCRIPTION
1.	C.P.	CATCH PIT
2.	---	UNDER GROUND PIPE DRAIN
3.	□	RAIN WATER HARVESTING PIT
4.	---	BASEMENT RETAINING WALL



rev. no.	date	revision

project
PROPOSED GROUP HOUSING FOR SAM INDIA ABHIMANYU HOUSING AT PLOT NO. GH-02, SECTOR -16-C GREATER NOIDA, G.B. NAGAR, U.P.

title
LAYOUT PLAN

subtitle
EXTERNAL DRAINAGE SYSTEM

drawing released for
 APPROVAL SUBMISSION
 ADVANCE COPY CONSTRUCTION

drg. no. PO / 10663 / ES - 03 drawn by Prem Saini
 scale 1 : 700 designed by Badri Vishal
 date 17.05.2023 checked by Anand Havelia

architects
Confluence
 architecture, urban design, hospitality, interiors
 Ph- 91-11-48130800, 40548785. con@confluence.com
www.inconfluence.com, Member of IGBC, ISO - 9001 : 2000

services consultant
Consummate Engineering Services (P) Ltd.
 Noida Office : B-07, Sector-07, Noida - 201 011
 Lko. Office : R-008, Rohan Purnima, Gomti Nagar, Lucknow
 Tel : (0120) 2303500 (30 Lines)
 e mail : mail@cespl.in, website : www.cespl.in

