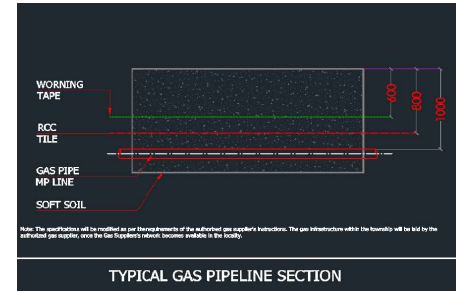


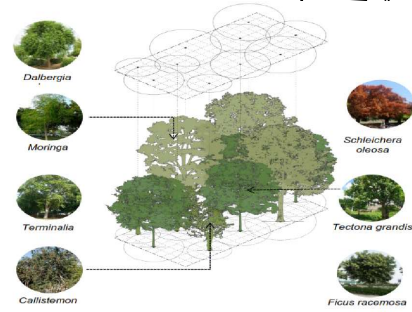
Total No of Trees / Shrubs Planned
@ 80 sqm per tree = 3078 Trees



Botanical name	Common name	Physionomy	Height spread, shape	Characteristics	Fauna Interactions (Birds, Mokeys, Squirrels, pollinators)
<i>Bambusa nana</i>	Semi	Deciduous	18-20 m, Open canopy	Spring large red waxy flowers on leafless tree	Nesting, Roosting, Foraging
<i>Castanopsis citrina</i>	Chest	Evergreen	5-8 m, Irregular canopy	Shiny flowers, fragrant foliage and clear maintenance	Foraging
<i>Crotalaria retusa</i>	Bama	Deciduous	6-8 m, Round	Fragrant flower clusters appearing from January to April	Nesting, Roosting
<i>Lagerstromia speciosa</i>	Pride of India	Deciduous	5-6 m, Spreading	Vibrant mauve, pink flowers from April-June	Foraging
<i>Magnolia champaca 'Aba'</i>	White Champak	Evergreen	5-6 m	Glossy dark green leaves with fragrant white flowers	Foraging
<i>Minuscopa elonga</i>	Bakul	Evergreen	10-12 m, Spreading	Shady, dense foliage and fragrant white flowers	Foraging
<i>Mitragyna parvifolia</i>	Kalm	Deciduous	12-15 m, open canopy	Fast growing large tree	Foraging
<i>Nyctanthes arbor-triste</i>	Pajarjat	Deciduous	6 m	Highly fragrant flowers from April to August	Foraging
<i>Phenacoccus aciculatum</i>	Kanak champa	Deciduous	11-16 m, Round	Large irregularly lobed leaves, highly fragrant white flowers	Foraging
<i>Sarcococca</i>	Sita-Ashok	Evergreen	0-7 m, Spreading	New leaves hang down showing pinkish colour, vibrant orange-red flowers	Nesting, Roosting



Botanical name	Common name	Physionomy	Height spread, shape	Characteristics	Fauna Interactions (Birds, Mokeys, Squirrels, pollinators)
<i>Acacia indica</i>	Nam	Deciduous	12-15 m, 18-20 m (sa. Round)	Shady, dense foliage, pale white fragrant flowers	Nesting, Roosting, Foraging
<i>Cassia fistula</i>	Amaltas	Deciduous	11-12 m, Irregular canopy	Heavy, drooping limbs, flowers from April to October	Nesting, Roosting, Foraging
<i>Cassia equisetifolia</i>	Jangli siris	Evergreen	12-16 m, UPRIGHT	Fast growing, hardy, low maintenance, shade tolerant	Nesting, Roosting
<i>Melaleuca leucadendron</i>	Kilni	Evergreen	12-18 m, 12 m (sa. Round)	Dense canopy, shiny leafy foliage	Foraging
<i>Neolamarckia cadamba</i>	Kodamba	Deciduous	13-16 m, Open	Quick growing, fragrant, light-colored flowers from June to September	Nesting, Roosting
<i>Platanus pinnatifida</i>	Cisampod	Deciduous	14-16 m, Spreading	Umbrella shaped dense canopy, attractive flower clusters	Nesting
<i>Pongamia pinnata</i>	Karai	Evergreen	11-12 m, Spreading	Medium dense foliage, fragrant, about clustered pinkish flowers	Roosting, Foraging
<i>Schinus molle</i>	Kaum	Deciduous	10-12 m, Round	Dense canopy, large white flowers emerging from March	Foraging
<i>Syzygium cumini</i>	Jamun	Evergreen	15-18 m, Oval	Shady, dense, fragrant, small white flowers	Foraging
<i>Terminalia alata</i>	Ajapa	Deciduous	20-25 m, Oval	Heavy, waxy yellow flowers from December to January	Foraging, Roosting



DRAWING TITLE:

THE RAAS - VRINDAVAN TOWNSHIP - LANDSCAPE LAYOUT

PLAN OF PROPOSED **THE RAAS** RESIDENTIAL COLONY, ON GATA NO. 63, 66, 67, 68, 69, 70, 89, 91, 66K, 87/1, 87/2, 90/1M, 90/2M, 93/1K, MAUJA JULHENDI, & GATA NO. 786 & 795, MAUJA KONHA, RADHA KUND - RAAL ROAD, TEH.&DIST. MATHURA

OWNER :-
IMPACTUM LANDS PRIVATE LIMITED
DIRECTORS:-

- (1) SHRI RAKESH RAMDAS GUPTA
- (2) ASHWINDER SINGH MATHARU

ARCHITECTS

DERA Consultants Pvt. Ltd.
30-B, Geeta Enclave, Krishna Nagar, Mathura 281004, Uttar Pradesh (India)
Signature and e-Office@dera.co.in, M: 991-800-771654



PROPERTY OF THE ARCHITECTS PRODUCED WITH THE PERMISSION OF THE ARCHITECTS