

SECTION- XX

CLIENT :-
GAURSONS PROMOTERS PRIVATE LIMITED
Gaur Biz Park Plot No.-1, Abhay Khand-II,
Indraprastha, Ghaziabad

PROJECT :-
PROPOSED GROUP HOUSING PROJECT (GC-14)
GAUR CITY-2 AT PLOT NO.- GC-12 & GC-14/GH-
SECTOR 16-C, GREATER NOIDA

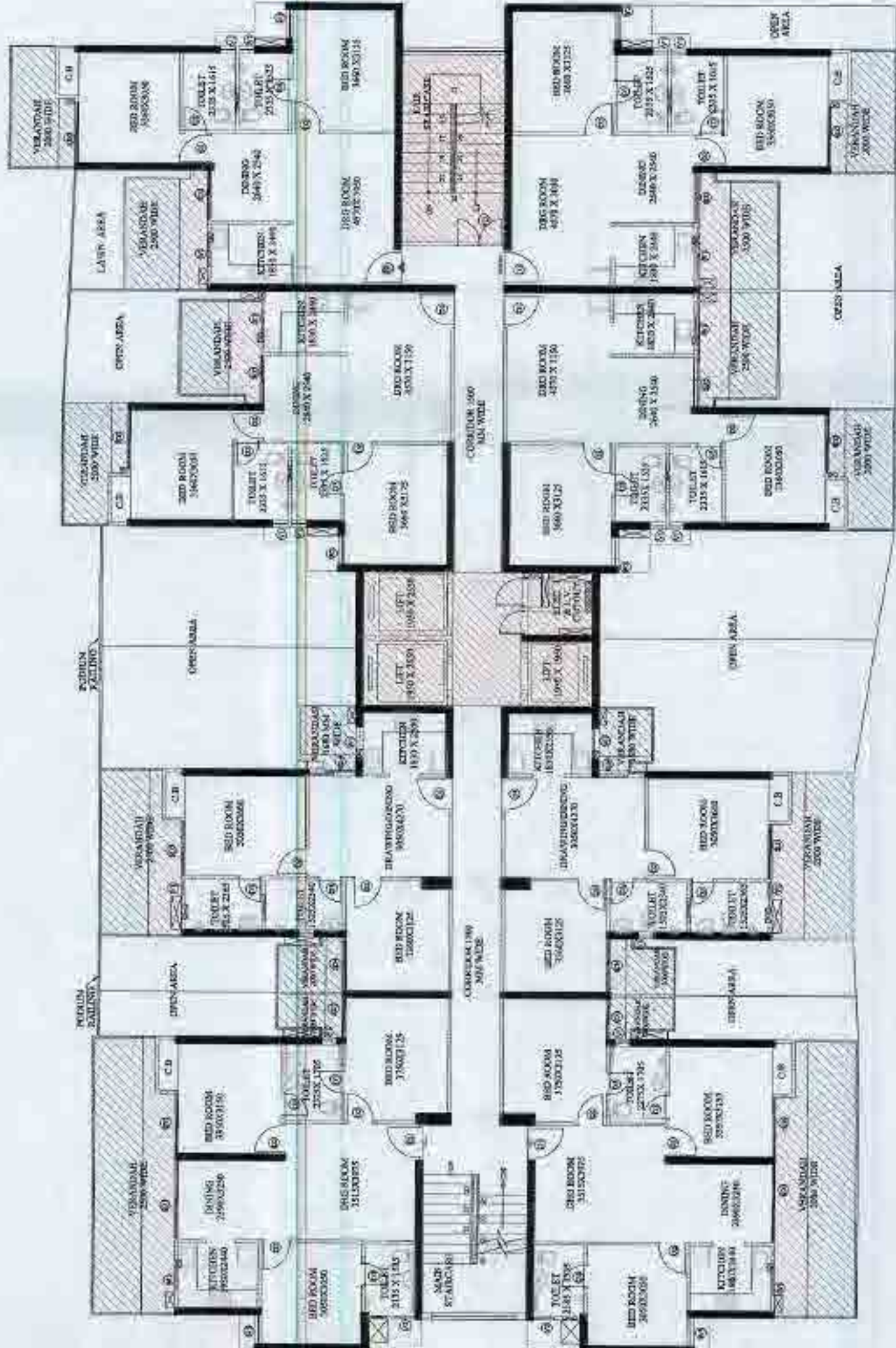
<input checked="" type="checkbox"/> REVISED SUBMISSION (GC-14)	
SCALE :-	
TITLE :-	ELEVATION & SECTION

<p>OWNER'S SIGN</p> 	<p>ARCHITECT'S SIGN</p> 
---	--

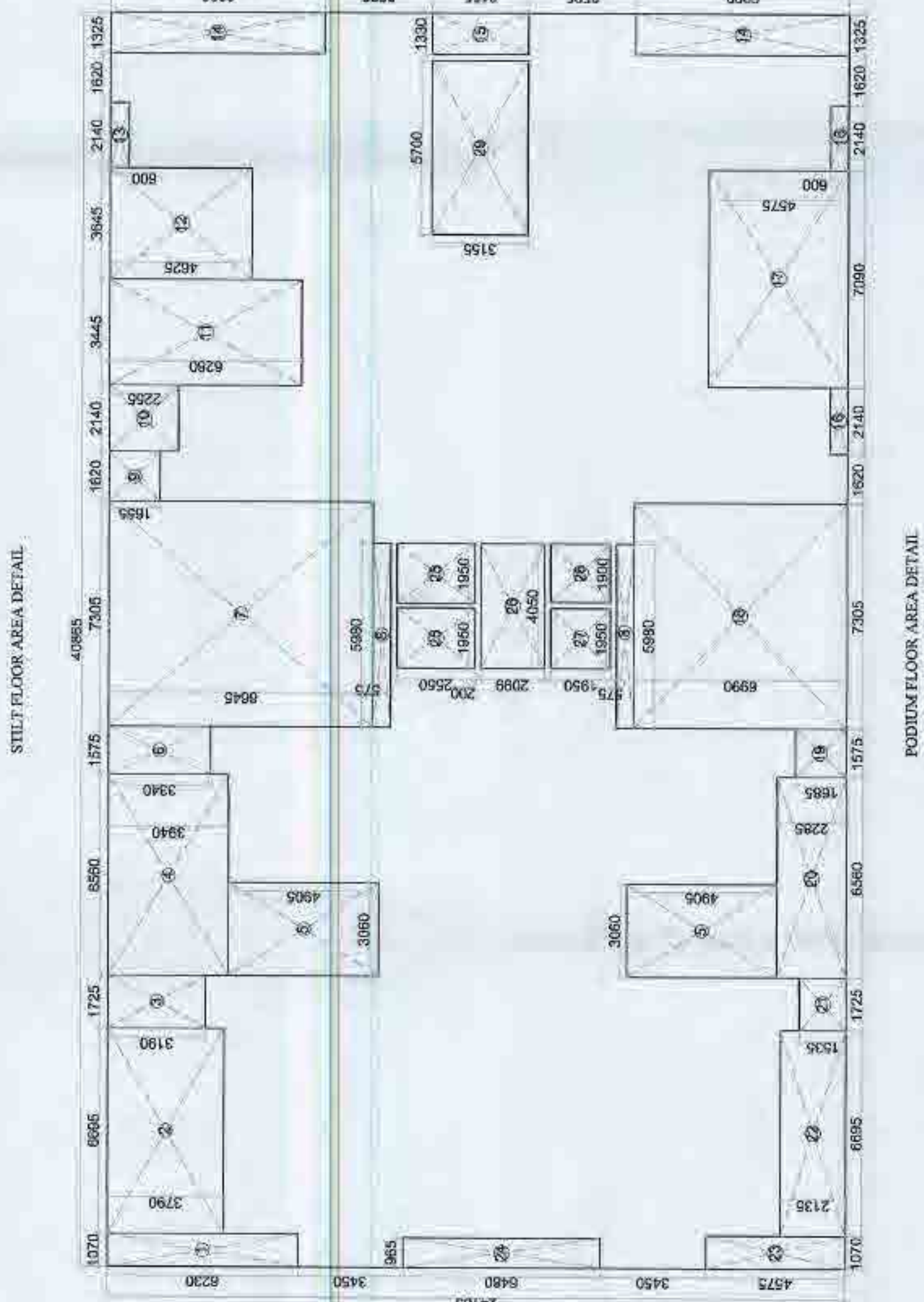
BLOCK - J



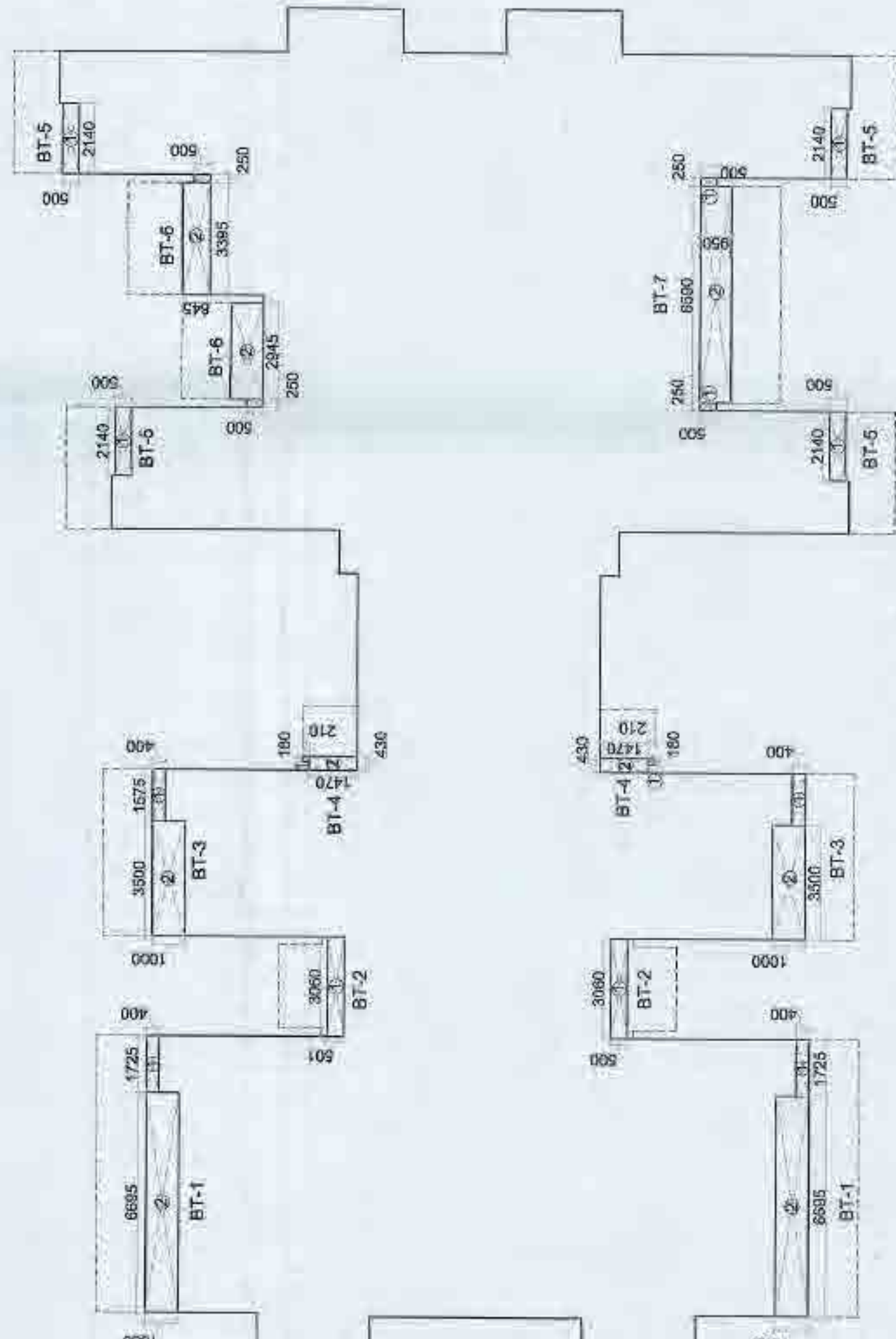
STILL FLOOR PLAN



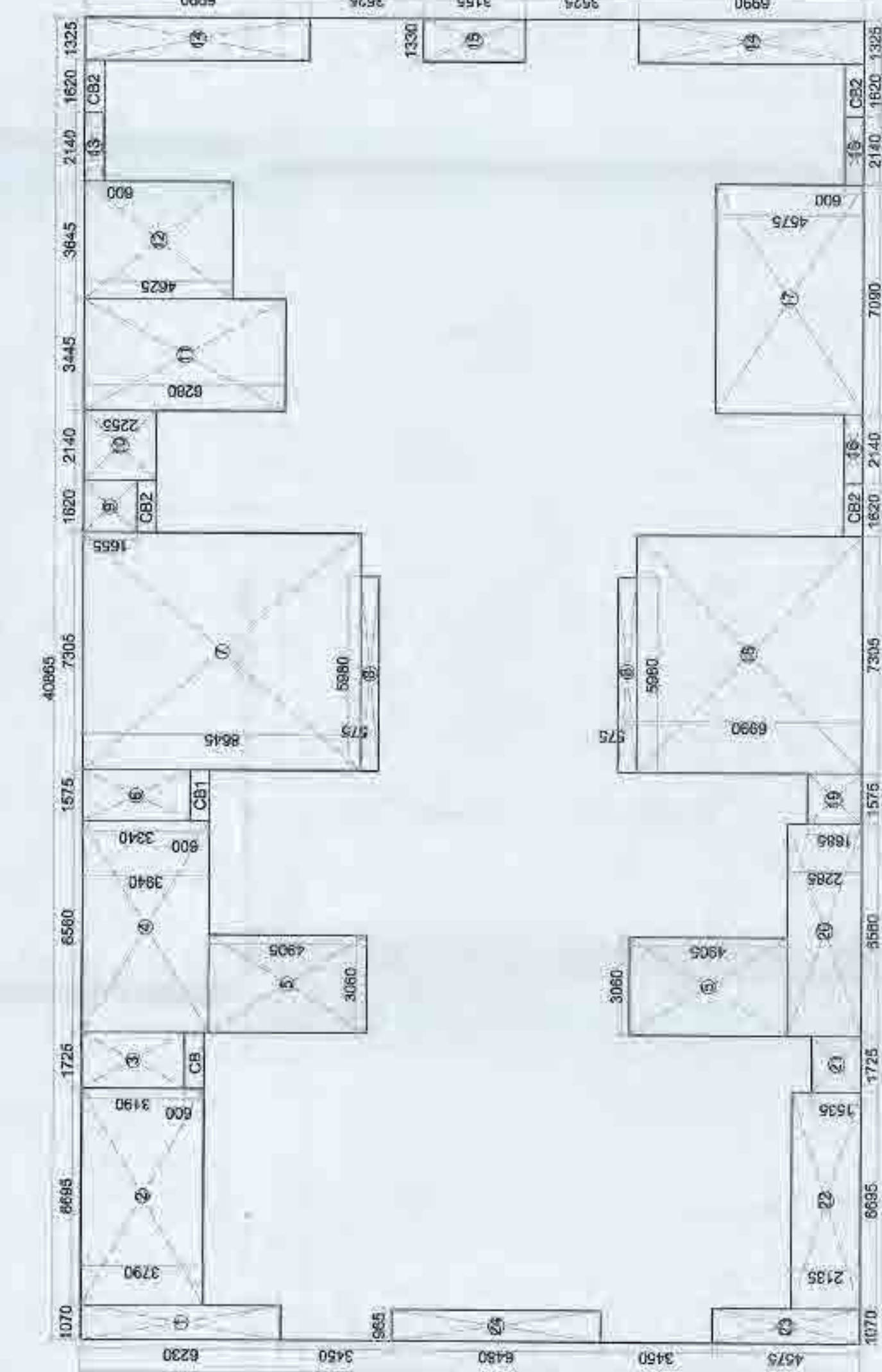
PODIUM FLOOR PLAN



PODIUM FLOOR AREA DETAIL

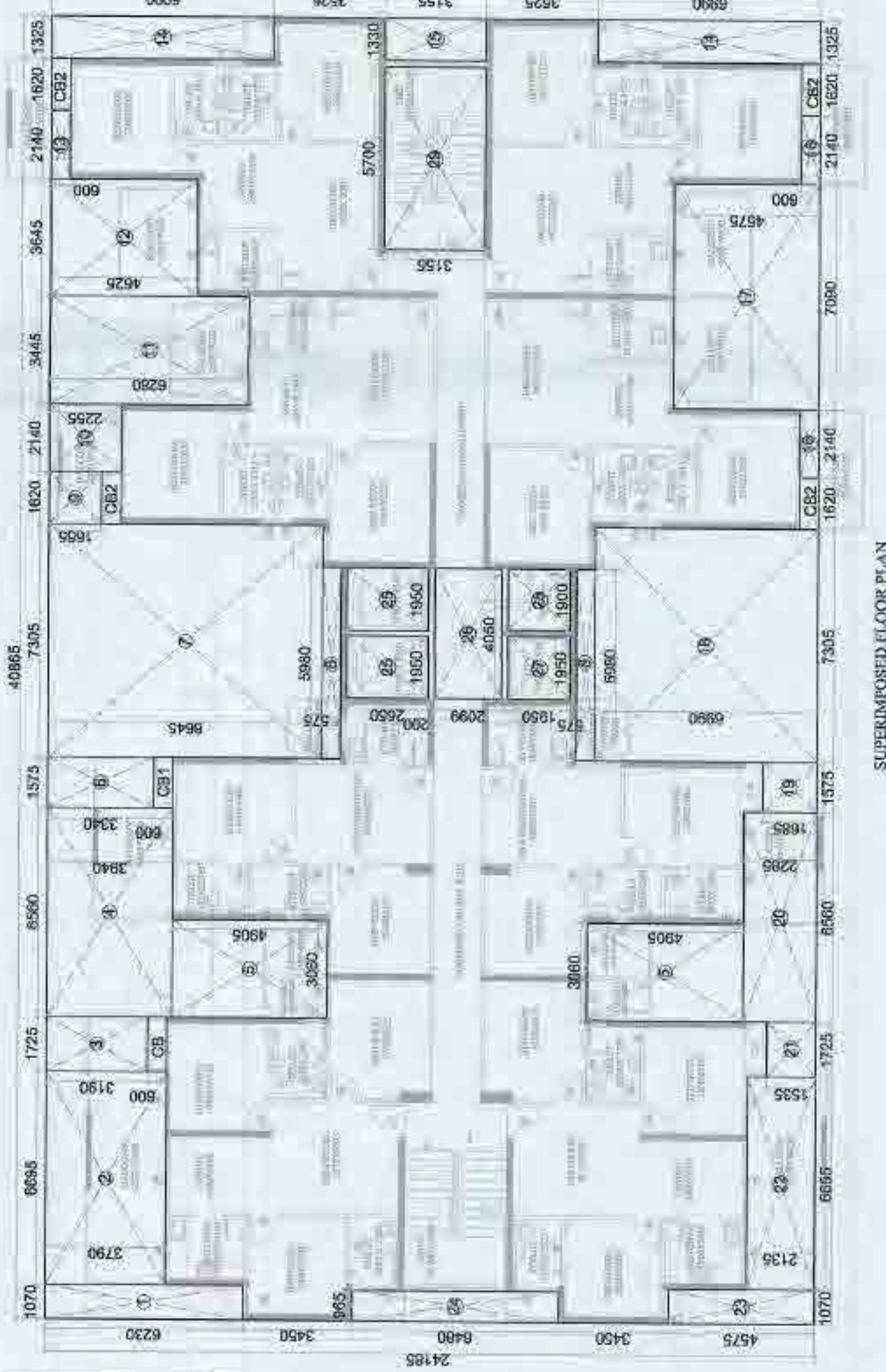
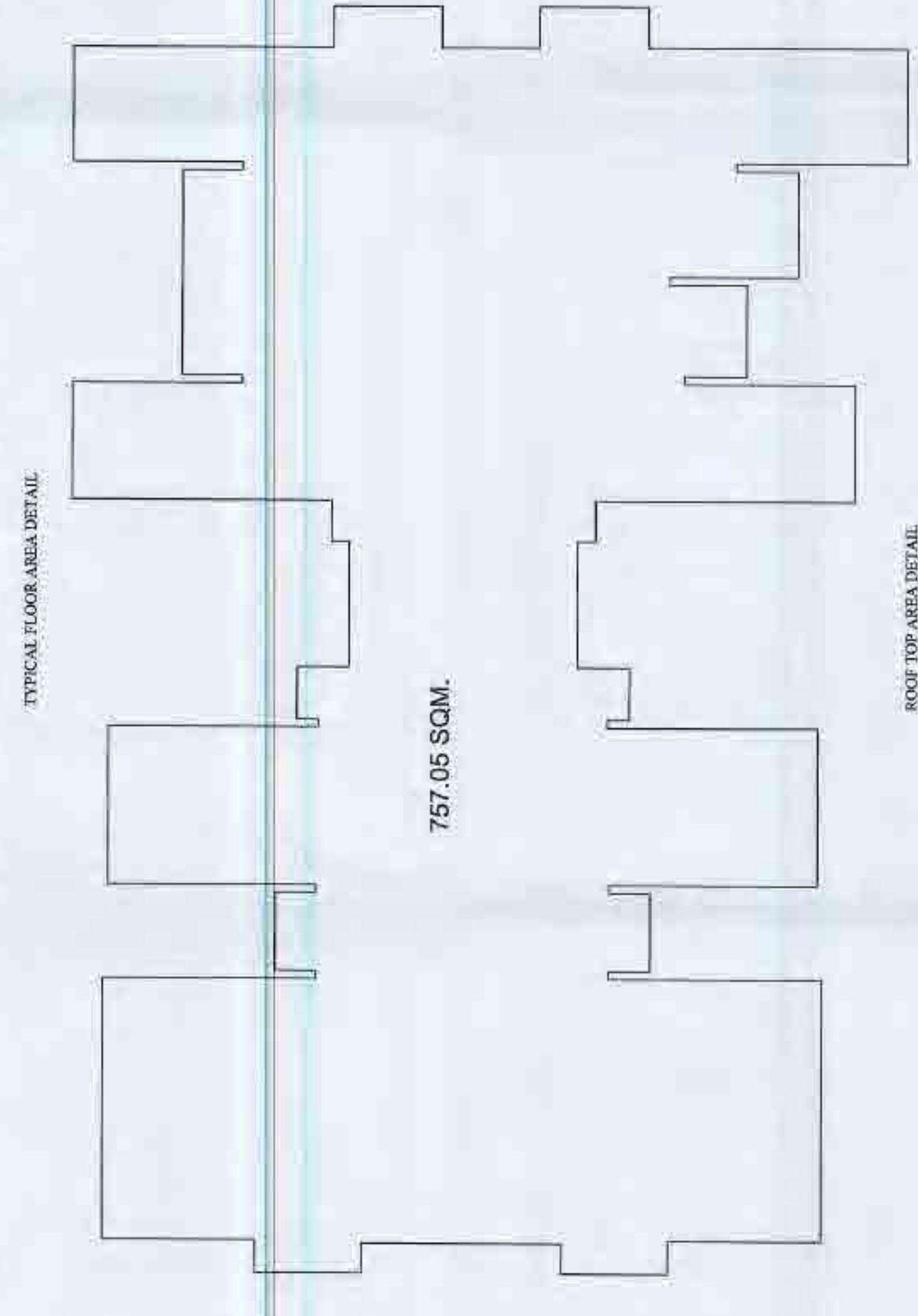
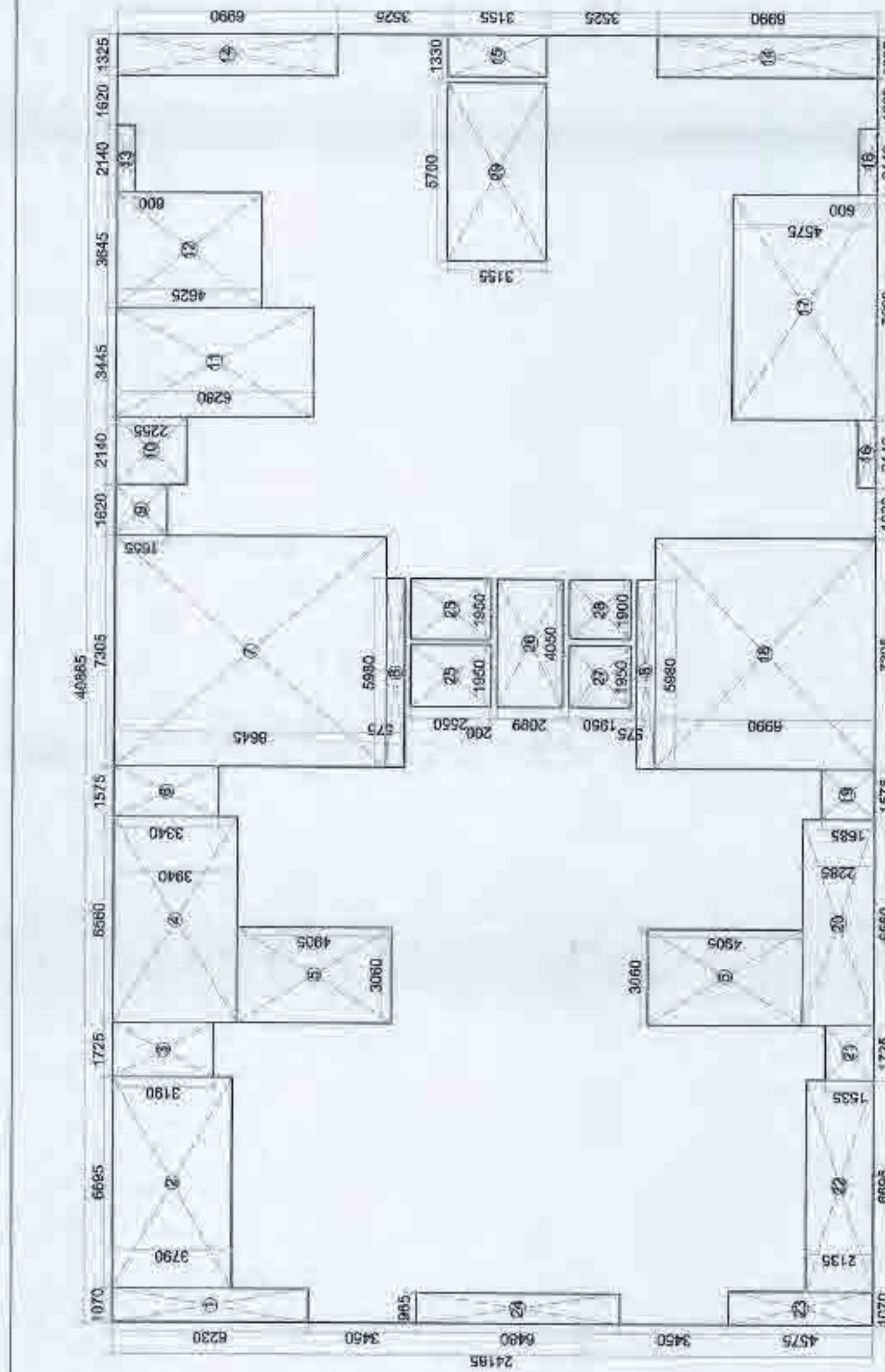


EXCESS BALCONY AREA DETAIL



PODIUM FLOOR AREA DETAIL

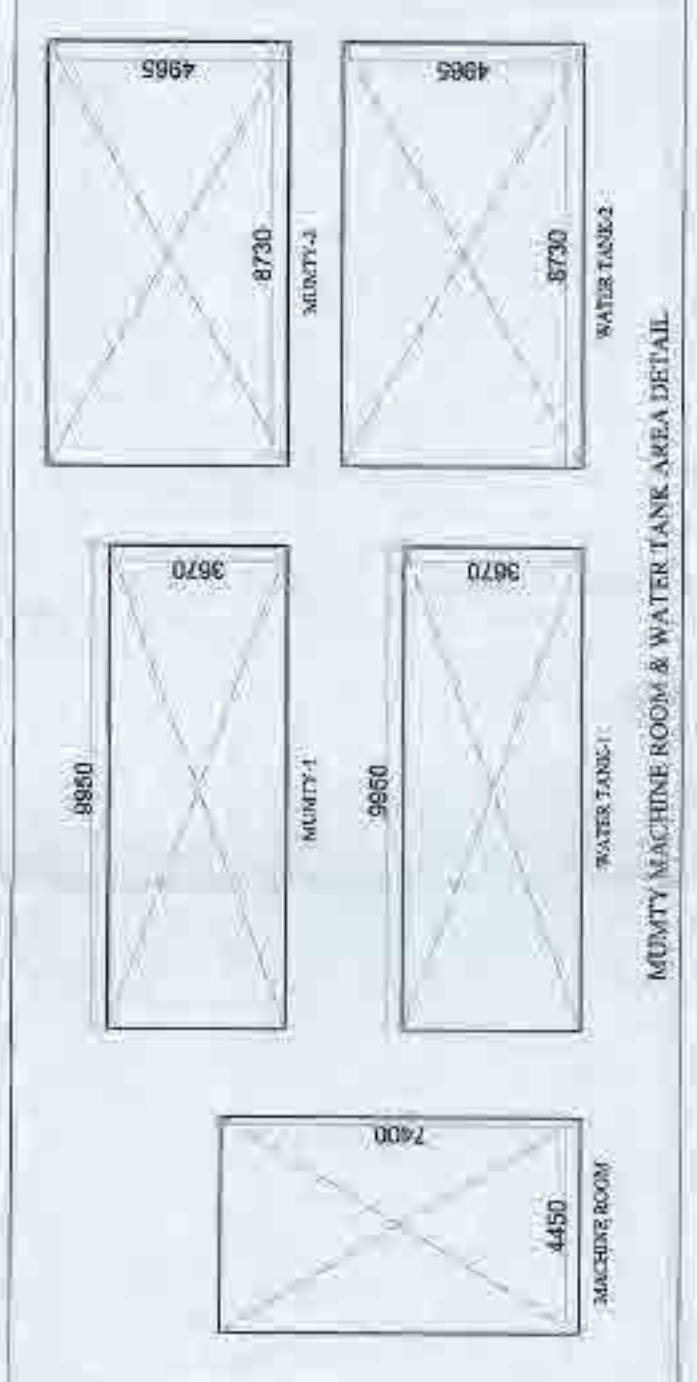
BLOCK-K									
GROUND COVERAGE AREA DETAIL									
TOTAL AREA	40.885	X	24.185	=	988.32				
LESS AREA:-									
1	X	1.070	X	6.230	=	6.67			
2	X	8.685	X	3.780	=	32.81			
3	X	1.725	X	3.190	=	5.50			
4	X	8.560	X	3.940	=	33.85			
5	X	1.000	X	4.890	=	4.89			
6	X	1.675	X	3.340	=	5.60			
7	X	1.320	X	3.940	=	5.20			
8	X	1.000	X	3.940	=	3.94			
9	X	1.000	X	3.940	=	3.94			
10	X	1.000	X	3.940	=	3.94			
11	X	1.000	X	3.940	=	3.94			
12	X	1.000	X	3.940	=	3.94			
13	X	1.000	X	3.940	=	3.94			
14	X	1.000	X	3.940	=	3.94			
15	X	1.000	X	3.940	=	3.94			
16	X	1.000	X	3.940	=	3.94			
17	X	1.000	X	3.940	=	3.94			
18	X	1.000	X	3.940	=	3.94			
19	X	1.000	X	3.940	=	3.94			
20	X	1.000	X	3.940	=	3.94			
21	X	1.000	X	3.940	=	3.94			
22	X	1.000	X	3.940	=	3.94			
23	X	1.000	X	3.940	=	3.94			
24	X	1.000	X	3.940	=	3.94			
25	X	1.000	X	3.940	=	3.94			
26	X	1.000	X	3.940	=	3.94			
27	X	1.000	X	3.940	=	3.94			
28	X	1.000	X	3.940	=	3.94			
29	X	1.000	X	3.940	=	3.94			
30	X	1.000	X	3.940	=	3.94			
31	X	1.000	X	3.940	=	3.94			
32	X	1.000	X	3.940	=	3.94			
33	X	1.000	X	3.940	=	3.94			
34	X	1.000	X	3.940	=	3.94			
35	X	1.000	X	3.940	=	3.94			
36	X	1.000	X	3.940	=	3.94			
37	X	1.000	X	3.940	=	3.94			
38	X	1.000	X	3.940	=	3.94			
39	X	1.000	X	3.940	=	3.94			
40	X	1.000	X	3.940	=	3.94			
41	X	1.000	X	3.940	=	3.94			
42	X	1.000	X	3.940	=	3.94			
43	X	1.000	X	3.940	=	3.94			
44	X	1.000	X	3.940	=	3.94			
45	X	1.000	X	3.940	=	3.94			
46	X	1.000	X	3.940	=	3.94			
47	X	1.000	X	3.940	=	3.94			
48	X	1.000	X	3.940	=	3.94			
49	X	1.000	X	3.940	=	3.94			
50	X	1.000	X	3.940	=	3.94			
51	X	1.000	X	3.940	=	3.94			
52	X	1.000	X	3.940	=	3.94			
53	X	1.000	X	3.940	=	3.94			
54	X	1.000	X	3.940	=	3.94			
55	X	1.000	X	3.940	=	3.94			
56	X	1.000	X	3.940	=	3.94			
57	X	1.000	X	3.940	=	3.94			
58	X	1.000	X	3.940	=	3.94			
59	X	1.000	X	3.940	=	3.94			
60	X	1.000	X	3.940	=	3.94			
61	X	1.000	X	3.940	=	3.94			
62	X	1.000	X	3.940	=	3.94			
63	X	1.000	X	3.940	=	3.94			
64	X	1.000	X	3.940	=	3.94			
65	X	1.000	X	3.940	=	3.94			
66	X	1.000	X	3.940	=	3.94			
67	X	1.000	X	3.940	=	3.94			
68	X	1.000	X	3.940	=	3.94			
69	X	1.000	X	3.940	=	3.94			
70	X	1.000	X	3.940	=	3.94			
71	X	1.000	X	3.940	=	3.94			
72	X	1.000	X	3.940	=	3.94			
73	X	1.000	X	3.940	=	3.94			
74	X	1.000	X	3.940	=	3.94			
75	X	1.000	X	3.940	=	3.94			
76	X	1.000	X	3.940	=	3.94			
77	X	1.000	X	3.940	=	3.94			
78	X	1.000	X	3.940	=	3.94			
79	X	1.000	X	3.940	=	3.94			
80	X	1.000	X	3.940	=	3.94			
81	X	1.000	X	3.940	=	3.94			
82	X	1.000	X	3.940	=	3.94			
83	X	1.000	X	3.940	=	3.94			
84	X	1.000	X	3.940	=	3.94			
85	X	1.000	X	3.940	=	3.94			
86	X	1.000	X	3.940	=	3.94			
87	X	1.000	X	3.940	=	3.94			
88	X	1.000	X	3.940	=	3.94			
89	X	1.000	X	3.940	=	3.94			
90	X	1.000	X	3.940	=	3.94			
91	X	1.000	X	3.940	=	3.94			
92	X	1.000	X	3.940	=	3.94			
93	X	1.000	X	3.940	=	3.94			
94	X	1.000	X	3.940	=	3.94			
95	X	1.000	X	3.940	=	3.94			
96	X	1.000	X	3.940	=	3.94			
97	X	1.000	X	3.940	=	3.94			
98	X	1.000	X	3.940	=	3.94			
99	X	1.000	X	3.940	=	3.94			
100	X	1.000	X	3.940	=	3.94			
101	X	1.000	X	3.940	=	3.94			
102	X	1.000	X	3.940	=	3.94			
103	X	1.000	X	3.940	=	3.94			
104	X	1.000	X	3.940	=	3.94			
105	X	1.000	X	3.940	=	3.94			
106	X	1.000	X	3.940	=	3.94			
107	X	1.000	X	3.940	=	3.94			
108	X	1.000	X	3.940	=	3.94			
109	X	1.000	X	3.940	=	3.94			
110	X	1.000	X	3.940	=	3.94			
111	X	1.000	X	3.940	=	3.94			
112	X	1.000	X	3.940	=	3.94			
113	X	1.000	X	3.940	=	3.94			
114	X	1.000	X	3.940	=	3.94			
115	X	1.000	X	3.940	=	3.94			
116	X	1.000	X	3.940	=	3.94			
117	X	1.000	X	3.940	=	3.94			
118	X	1.000	X	3.940	=	3.94			
119	X	1.000	X	3.940	=	3.94			
120	X	1.000	X	3.940	=	3.94			
121	X	1.000	X	3.940	=	3.94			
122	X	1.000	X	3.940	=	3.94			
123	X	1.000	X	3.940	=	3.94			
124	X	1.000	X	3.940	=	3.94			
125	X	1.000	X	3.940	=	3.94			
126	X	1.000	X	3.940	=	3.94			
127	X	1.000	X	3.940	=	3.94			
128	X	1.000	X	3.940	=	3.94			
129	X	1.000	X	3.940	=	3.94			
130	X	1.000	X	3.940	=	3.94			
131	X	1.000	X	3.940	=	3.94			
132	X	1.000	X	3.940	=	3.94			
133	X	1.000	X	3.940	=	3.94			
134	X	1.000	X	3.940	=	3.94			
135	X	1.000	X	3.940	=	3.94			
136	X	1.000	X	3.940	=	3.94			
137	X	1.000	X	3.940	=	3.94			
138	X	1.000	X	3.940	=	3.94			
139	X	1.000	X	3.940	=	3.94			
140	X	1.000	X	3.940	=	3.94			
141	X	1.000	X	3.940	=	3.94			
142	X	1.000	X	3.940	=	3.94			
143	X	1.000	X	3.940	=	3.94			
144	X	1.000	X	3.940	=	3.94			
145	X	1.000	X	3.940	=	3.94			
146	X	1.000	X	3.940	=	3.94			
147	X	1.000	X	3.940	=	3.94			
148	X	1.000	X	3.940	=	3.94			
149	X	1.000	X	3.940	=	3.94			
150	X	1.000	X	3.940	=	3.94			
151	X	1.000	X	3.940	=	3.94			
152	X	1.000	X	3.940	=	3.94			
153	X	1.000	X	3.940	=	3.94			
154	X	1.000	X	3.940	=	3.94			
155	X	1.000	X	3.940	=	3.94			
156	X	1.000	X	3.940	=	3.94			
157	X	1.000	X	3.940	=	3.94			
158	X	1.000	X	3.940	=	3.94			
159	X	1.000	X	3.940	=	3.94			
160	X	1.000	X	3.940	=	3.94			
161	X	1.000	X	3.940	=	3.94			
162	X	1.000	X	3.940	=	3.94			
163	X	1.000	X	3.940	=	3.94			
164	X	1.000	X	3.940	=	3.94			
165	X	1.000	X	3.940	=	3.94			
166	X	1.000	X	3.940	=	3.94			
167	X	1.000	X	3.940	=	3.94			
168	X	1.000	X	3.940	=	3.94			
169	X	1.000	X	3.940	=	3.94			
170	X	1.000	X	3.940	=	3.94			
171	X	1.000	X	3.940	=	3.94			
172	X	1.000	X	3.940	=	3.94			
173	X	1.000	X	3.940	=	3.94			
174	X	1.000	X	3.940	=	3.94			
175	X	1.000	X	3.940	=	3.94			
176	X	1.000	X	3.940	=	3.94			



BLOCK#									
GROUND COVERAGE AREA DETAIL									
TOTAL AREA		COVERED AREA		40.88% X		24.18% X		988.57	
LIST AREA - A									
1	1	X	1,070	X	4,200	=	6,270		
2	1	X	3,685	X	3,150	=	28,350		
3	1	X	6,000	X	3,900	=	23,400		
4	1	X	6,000	X	3,900	=	23,400		
5	2	X	3,569	X	4,905	=	30,333		
6	1	X	1,575	X	3,340	=	5,915		
7	2	X	3,305	X	6,145	=	63,117		
8	2	X	5,660	X	6,575	=	6,885		
9	1	X	1,007	X	1,565	=	2,672		
10	1	X	2,140	X	2,355	=	4,895		
11	1	X	3,445	X	6,200	=	31,035		
12	1	X	3,645	X	4,635	=	18,955		
13	1	X	2,140	X	5,000	=	11,281		
14	2	X	1,300	X	6,940	=	18,302		
15	1	X	1,330	X	3,155	=	4,201		
16	2	X	2,140	X	6,030	=	2,697		
17	1	X	7,330	X	4,575	=	52,470		
18	1	X	7,300	X	6,990	=	61,009		
19	1	X	5,575	X	1,535	=	7,683		
20	1	X	5,960	X	3,255	=	11,649		
21	1	X	1,725	X	1,100	=	2,695		
22	1	X	6,695	X	2,135	=	11,225		
23	1	X	1,070	X	4,975	=	4,949		
24	1	X	5,665	X	4,640	=	6,222		
25									
26									
27									
28									
29									
30									
TOTAL AREA					TOTAL AREA = 310,235				
GROUND COVERAGE + TOTAL AREA = LIST AREA									
OTHERS GROUND COVERAGE AREA					370.50 = 617.892				
NET GROUND COVERAGE AREA = 370.50									
NET GROUND COVERAGE AREA = GR COVERAGE) 15% BALCONY									
TOTAL AREA					617.42 = 52.21 = 650.63				
STILT AREA DETAILS									
TOTAL AREA		40.84% X		22.24% X		638.26			
STILT FLOOR FAN AREA DETAIL									
1	1	X	3,710	X	0.101	=	22.63		
2	1	X	3,305	X	1,930	=	4,778		
3	1	X	1,644	X	2,772	=	4,43		
4	1	X	5,074	X	6,568	=	46.17		
5	1	X	5,410	X	7,501	=	40.98		
6	1	X	3,465	X	1,570	=	9.46		
7	1	X	2,768	X	3,400	=	52.98		
8	1	X	4,300	X	3,501	=	10.97		
9	1	X	1,325	X	1,600	=	2.65		
TOTAL					705.51				
STILT 15% PRESCRIBED FAN AREA DETAIL									
1	1	FAN	1,400	X	2,100	=	3,915		
2	1	FAN	1,400	X	2,400	=	5.14		
3	1	FAN	3,675	X	2,534	=	22.61		
4	1	FAN	7,165	X	3,135	=	87.65		
TOTAL					110.35				
STILT 15% FAN AREA DETAILS									
1	TOTAL STILT AREA								
2	TOTAL STILT 15% F								

LEGEND	
	BALCONY AREA
	15% PRESCRIBED F.A.R. AREA
	EXCESS BALCONY F.A.R. AREA

TYPICAL DETAIL OF OPENINGS				
No.	TYPE	SIZE	CILL	LINTEL
1	W	100x100	—	50x
2	W	100x100	—	200x
3	W	100x100	—	200x
4	SW	100x100	—	200x
5	SW	200x200	—	200x
6	SW	200x200	—	200x
7	SW	200x200	—	200x
8	SW	200x200	—	200x
9	SW	200x200	—	200x
10	SW	200x200	—	200x
11	SW	200x200	—	200x
12	SW	200x200	—	200x
13	SW	200x200	—	200x
14	SW	200x200	—	200x
15	SW	200x200	—	200x
16	SW	200x200	—	200x
17	SW	200x200	—	200x
18	SW	200x200	—	200x
19	SW	200x200	—	200x
20	SW	200x200	—	200x
21	SW	200x200	—	200x
22	SW	200x200	—	200x
23	SW	200x200	—	200x
24	SW	200x200	—	200x
25	SW	200x200	—	200x
26	SW	200x200	—	200x
27	SW	200x200	—	200x
28	SW	200x200	—	200x
29	SW	200x200	—	200x
30	SW	200x200	—	200x
31	SW	200x200	—	200x
32	SW	200x200	—	200x
33	SW	200x200	—	200x
34	SW	200x200	—	200x
35	SW	200x200	—	200x
36	SW	200x200	—	200x
37	SW	200x200	—	200x
38	SW	200x200	—	200x
39	SW	200x200	—	200x
40	SW	200x200	—	200x
41	SW	200x200	—	200x
42	SW	200x200	—	200x
43	SW	200x200	—	200x
44	SW	200x200	—	200x
45	SW	200x200	—	200x
46	SW	200x200	—	200x
47	SW	200x200	—	200x
48	SW	200x200	—	200x
49	SW	200x200	—	200x
50	SW	200x200	—	200x
51	SW	200x200	—	200x
52	SW	200x200	—	200x
53	SW	200x200	—	200x
54	SW	200x200	—	200x
55	SW	200x200	—	200x
56	SW	200x200	—	200x
57	SW	200x200	—	200x
58	SW	200x200	—	200x
59	SW	200x200	—	200x
60	SW	200x200	—	200x
61	SW	200x200	—	200x
62	SW	200x200	—	200x
63	SW	200x200	—	200x
64	SW	200x200	—	200x
65	SW	200x200	—	200x
66	SW	200x200	—	200x
67	SW	200x200	—	200x
68	SW	200x200	—	200x
69	SW	200x200	—	200x
70	SW	200x200	—	200x
71	SW	200x200	—	200x
72	SW	200x200	—	200x
73	SW	200x200	—	200x
74	SW	200x200	—	200x
75	SW	200x200	—	200x
76	SW	200x200	—	200x
77	SW	200x200	—	200x
78	SW	200x200	—	200x
79	SW	200x200	—	200x
80	SW	200x200	—	200x
81	SW	200x200	—	200x
82	SW	200x200	—	200x
83	SW	200x200	—	200x
84	SW	200x200	—	200x
85	SW	200x200	—	200x
86	SW	200x200	—	200x
87	SW	200x200	—	200x
88	SW	200x200	—	200x
89	SW	200x200	—	200x
90	SW	200x200	—	200x
91	SW	200x200	—	200x
92	SW	200x200	—	200x
93	SW	200x200	—	200x
94	SW	200x200	—	200x
95	SW	200x200	—	200x
96	SW	200x200	—	200x
97	SW	200x200	—	200x
98	SW	200x200	—	200x
99	SW	200x200	—	200x
100	SW	200x200	—	200x



PODIUM FLOOR F.A.R.

TOTAL AREA

40.00%

24.18%

988.32

LESS AREA:

1. 1

X

1370

X

6.250

1.697

2. 1

X

9582

X

37.920

26.577

3. 1

X

6500

X

25.800

18.500

4. 1

X

3000

X

5.800

4.200

5. 2

X

1578

X

3.340

2.400

6. 1

X

1578

X

3.340

2.400

7. 1

X

1578

X

3.340

2.400

8. 2

X

6500

X

25.800

18.500

9. 1

X

1000

X

1.900

1.370

10. 1

X

1000

X

1.900

1.370

11. 1

X

1000

X

1.900

1.370

12. 1

X

1000

X

1.900

1.370

13. 1

X

1000

X

1.900

1.370

14. 1

X

1000

X

1.900

1.370

15. 1

X

1000

X

1.900

1.370

16. 2

X

1340

X

6.800

4.900

17. 1

X

7300

X

45.750

32.440

18. 1

X

7300

X

45.750

32.440

19. 1

X

7300

X

45.750

32.440

20. 1

X

6500

X

25.800

18.500

21. 1

X

6500

X

25.800

18.500

22. 1

X

6500

X

25.800

18.500

23. 1

X

6500

X

25.800

18.500

24. 1

X

6500

X

25.800

18.500

25. 1

X

6500

X

25.800

18.500

26. 1

X

6500

X

25.800

18.500

27. 1

X

6500

X

25.800

18.500

28. 1

X

6500

X

25.800

18.500

29. 1

X

6500

X

25.800

18.500

30. 1

X

6500

X

25.800

18.500

31. 1

X

6500

X

25.800

18.500

32. 1

X

6500

X

25.800

18.500

33. 1

X

6500

X

25.800

18.500

34. 1

X

6500

X

25.800

18.500

35. 1

X

6500

X

25.800

18.500

36. 1

X

6500

X

25.800

18.500

37. 1

X

6500

X

25.800

18.500

38. 1

X

6500

X

25.800

18.500

39. 1

X

6500

X

25.800

18.500

40. 1

X

6500

X

25.800

18.500

41. 1

X

6500

X

25.800

18.500

42. 1

X

6500

X

25.800

18.500

43. 1

X

6500

X

25.800

18.500

44. 1

X

6500

X

25.800

18.500

45. 1

X

6500

X

25.800

18.500

46. 1

X

6500

X

25.800

18.500

47. 1

X

6500

X

25.800

18.500

48. 1

X

6500

X

25.800

18.500

49. 1

X

6500

X

25.800

18.500

50. 1

X

6500

X

25.800

18.500

51. 1

X

6500

X

25.800

18.500

52. 1

X

6500

X

25.800

18.500

53. 1

X

6500

X

25.800

18.500

54. 1

X

6500

X

25.800

18.500

55. 1

X

6500

X

25.800

18.500

56. 1

X

6500

X

25.800

18.500

57. 1

X

6500

X

25.800

18.500

58. 1

X

6500

X

25.800

18.500

59. 1

X

6500

X

25.800

18.500

60. 1

X

6500

X

25.800

18.500

PODIUM FLOOR F.A.R.

TOTAL AREA

40.00%

24.18%

988.32

LESS AREA:

1. 1

X

1370

X

6.250

1.697

2. 1

X

9582

X

37.920

26.577

3. 1

X

6500

X

25.800

18.500

4. 1

X

3000

X

5.800

4.200

5. 2

X

1578

X

3.340

2.400

6. 1

X

1578

X

3.340

2.400

7. 1

X

1578

X

3.340

2.400

8. 2

X

6500

X

25.800

18.500

9. 1

X

1000

X

1.900

1.370

10. 1

X

1000

X

1.900

1.370

11. 1

X

1000

X

1.900

1.370

12. 1

X

1000

X

1.900

1.370

13. 1

X

1000

X

1.900

1.370

14. 1

X

1000

X

1.900

1.370

15. 1

X

1000

X

1.900

1.370

16. 2

X

1340

X

6.800

4.900

17. 1

X

7300

X

45.750

32.440

18. 1

X

7300

X

45.750

32.440

19. 1

X

7300

X

45.750

32.440

20. 1

X

6500

X

25.800

18.500

21. 1

X

6500

X

25.800

18.500

22. 1

X

6500

X

25.800

18.500

23. 1

X

6500

X

25.800

18.500

24. 1

X

6500

X

25.800

18.500

25. 1

X

6500

X

25.800

18.500

26. 1

X

6500

X

25.800

18.500

27. 1

X

6500

X

25.800

18.500

28. 1

X

6500

X

25.800

18.500

29. 1

X

6500

X

25.800

18.500

30. 1

X

6500

X

25.800

18.500

31. 1

X

6500

X

25.800

18.500

32. 1

X

6500

X

25.800

18.500

33. 1

X

6500

X

25.800

18.500

34. 1

X

6500

X

25.800

18.500

35. 1

X

6500

X

25.800

18.500

36. 1

X

6500

X

25.800

18.500

37. 1

X

6500

X

25.800

18.500

38. 1

X

6500

X

25.800

18.500

39. 1

X

6500

X

25.800

18.500

40. 1

X

6500

X

25.800

18.500

41. 1

X

6500

X

25.800

18.500

42. 1

X

6500

X

25.800

18.500

43. 1

X

6500

X

25.800

18.500

44. 1

X

6500

X

25.800

18.500

45. 1

X

6500

X

25.800

18.500

46. 1

X

6500

X

25.800

18.500

47. 1

X

6500

X

25.800

18.500

48. 1

X

6500

X

25.800

18.500

49. 1

X

6500

X

25.800

18.500

50. 1

X

6500

X

25.800

18.500

51. 1

X

6500

X

25.800

18.500

52. 1

X

6500

X

25.800

18.500

53. 1

X

6500

X

25.800

18.500

54. 1

X

6500

X

25.800

18.500

55. 1

X

6500

X

25.800

18.500

56. 1

X

6500

X

25.800

18.500

57. 1

X

6500

X

25.800

18.500

58. 1

X

6500

X

25.800

18.500

59. 1

X

6500

X

25.800

18.500

60. 1

X

6500

X

25.800

18.500

PODIUM FLOOR F.A.R.

TOTAL AREA

40.00%

24.18%

988.32

LESS AREA:

1. 1

X

1370

X

6.250

1.697

2. 1

X

9582

X

37.920

26.577

3. 1

X

6500

X

25.800

18.500

4. 1

X

3000

X

5.800

4.200

5. 2

X

1578

X

3.340

2.400

6. 1

X

1578

X

3.340

2.400

7. 1

X

1578

X

3.340

2.400

8. 2

X

6500

X

25.800

18.500

9. 1

X

1000

X

1.900

1.370

10. 1

X

1000

X

1.900

1.370

11. 1

X

1000

X

1.900

1.370

12. 1

X

1000

X

1.900

1.370

13. 1

X

1000

X

1.900

1.370

14. 1

X

1000

X

1.900

1.370

15. 1

X

1000

X

1.900

1.370

16. 2

X

1340

X

6.800

4.900

17. 1

X

7300

X

45.750

32.440

18. 1

X

7300

X

45.750

32.440

19. 1

X

7300

X

45.750

32.440

20. 1

X

6500

X

25.800

18.500

21. 1

X

6500

X

25.800

18.500

22. 1

X

6500

X

25.800

18.500

23. 1

X

6500

X

25.800

18.500

24. 1

X

6500

X

25.800

18.500

25. 1

X

6500

X

25.800

18.500

26. 1

X

6500

X

25.800

18.500

27. 1

X

6500

X

25.800

18.500

28. 1

X

6500

X

25.800

18.500

29. 1

X

6500

X

25.800

18.500

30. 1

X

6500

X

25.800

18.500

31. 1

X

6500

X

25.800

18.500

32. 1

X

6500

X

25.800

18.500

33. 1

X

6500

X

25.800

18.500

34. 1

X

6500

X

25.800

18.500

35. 1

X

6500

X

25.800

18.500

36. 1

X

6500

X

25.800

18.500

37. 1

X

6500

X

25.800

18.500

38. 1

X

6500

X

25.800

18.500

39. 1

X

6500

X

25.800

18.500

40. 1

X

6500

X

25.800

18.500

41. 1

X

6500

X

25.800

18.500

42. 1

X

6500

X

25.800

18.500

43. 1

X

6500

X

25.800

18.500

44. 1

X

6500

X

25.800

18.500

45. 1

X

6500

X

25.800

18.500

46. 1

X

6500

X

25.800

18.500

47. 1

X

6500

X

25.800

18.500

48. 1

X

6500

X

25.800

18.500

49. 1

X

6500

X

25.800

18.500

50. 1

X

6500

X

25.800

18.500

51. 1

X

6500

X

25.800

18.500

52. 1

X

6500

X

25.800

18.500

53. 1

X

6500

X

25.800

18.500

54. 1

X

6500

X

25.800

18.500

55. 1

X

6500

X

25.800

18.500

56. 1

X

6500

X

25.800

18.500

57. 1

X

6500

X

25.800

18.500

58. 1

X

6500

X

25.800

18.500

59. 1

X

6500

X

25.800

18.500

60. 1

X

6500

X

25.800

18.500

PODIUM FLOOR F.A.R.

TOTAL AREA

40.00%

24.18%

988.32

LESS AREA:

1. 1

X

1370

X

6.250

1.697

2. 1

X

9582

X

37.920

26.577

3. 1

X

6500

X

25.800

18.500

4. 1

X

3000

X

5.800

4.200

5. 2

X

1578

X

3.340

2.400

6. 1

X

1578

X

3.340

2.400

7. 1

X

1578

X

3.340

2.400

8. 2

X

6500

X

25.800

18.500

9. 1

X

1000

X

1.900

1.370

10. 1

X

1000

X

1.900

1.370

11. 1

X

1000

X

1.900

1.370

12. 1

X

1000

X

1.900

1.370

13. 1

X

1000

X

1.900

1.370

14. 1

X

1000

X

1.900

1.370

15. 1

X

1000

X

1.900

1.370

16. 2

X

1340

X

6.800

4.900

17. 1

X

7300

X

45.750

32.440

18. 1

X

7300

X

45.750

32.440

19. 1

X

7300

X

45.750

32.440

20. 1

X

6500

X

25.800

18.500

21. 1

X

6500

X

25.800

18.500

22. 1

X

6500

X

25.800

18.500

23. 1

X

6500

X

25.800

18.500

24. 1

X

6500

X

25.800

18.500

25. 1

X

6500

X

25.800

18.500

26. 1

X

6500

X

25.800

18.500

27. 1

X

6500

X

25.800

18.500

28. 1

X

6500

CLIENT :-	GAURSONS PROMOTERS PRIVATE LIMITED Gaur Biz Park Plot No.-1, Abbey Khand-II, Indirapuram, Ghaziabad
PROJECT :-	PROPOSED GROUP HOUSING PROJECT (GC-14) GAUR CITY-2 AT PLOT NO - GC-12 & GC-14/GH-3 SECTOR 16-C, GREATER NOIDA
	<input checked="" type="checkbox"/> REVISED SUBMISSION (GC-14)
SCALE :-	

TITLE :-	FLOOR PLAN & AREA DETAIL
OWNERS SIGN	ARCHITECT SIGN 
of SAKAMTHURU ENGINEERING WORK LTD	DRG. NO. : RSD-338
 Sakamthuru Engineering Works Ltd.	BLOCK - K

Greater Noida Industrial Dev. Authority
APPROVED
S.P. 2018/2019
Valid upto dated 5 Years
Noida
Gen. Manager
plg & accl.
Approved Checked & Verified By
[Signature]
[Signature]

CLIENT :-
GAURSONS PROMOTERS PRIVATE LIMITED
Gaur Biz Park Plot No.-1, Abhay Khand-II,
Indrapuram, Ghaziabad

PROJECT :-
PROPOSED GROUP HOUSING PROJECT (GC-14)
GAUR CITY-2 AT PLOT NO - GC-12 & GC-14/GH-3,
SECTOR 16-C, GREATER NOIDA

REVISD SUBMISSION (GC-14)

SCALE :-

TITLE :-
ELEVATION & SECTION

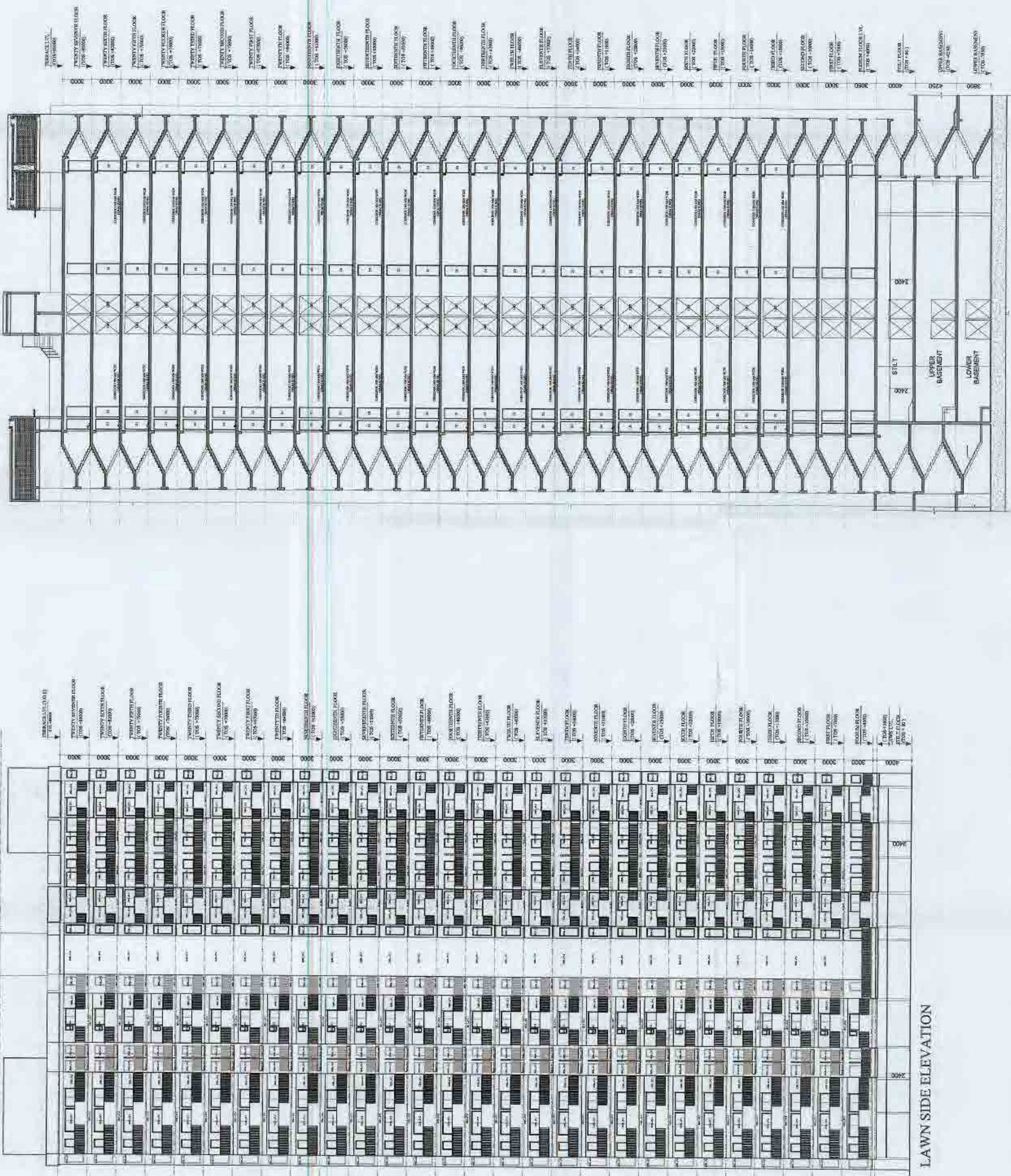
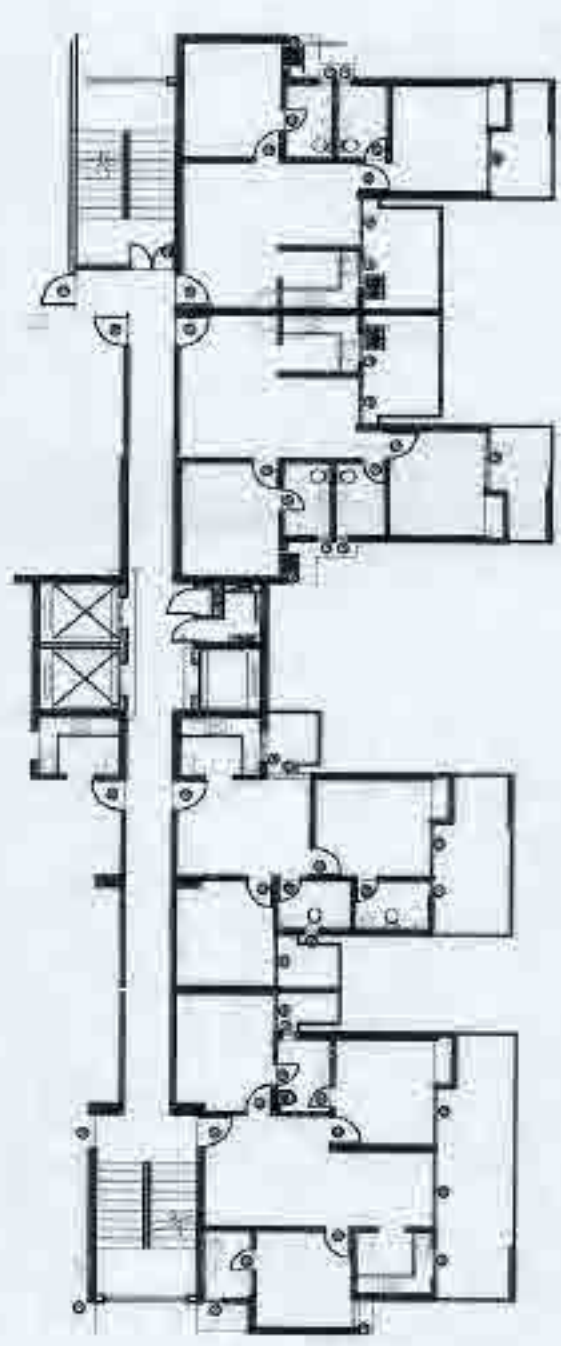
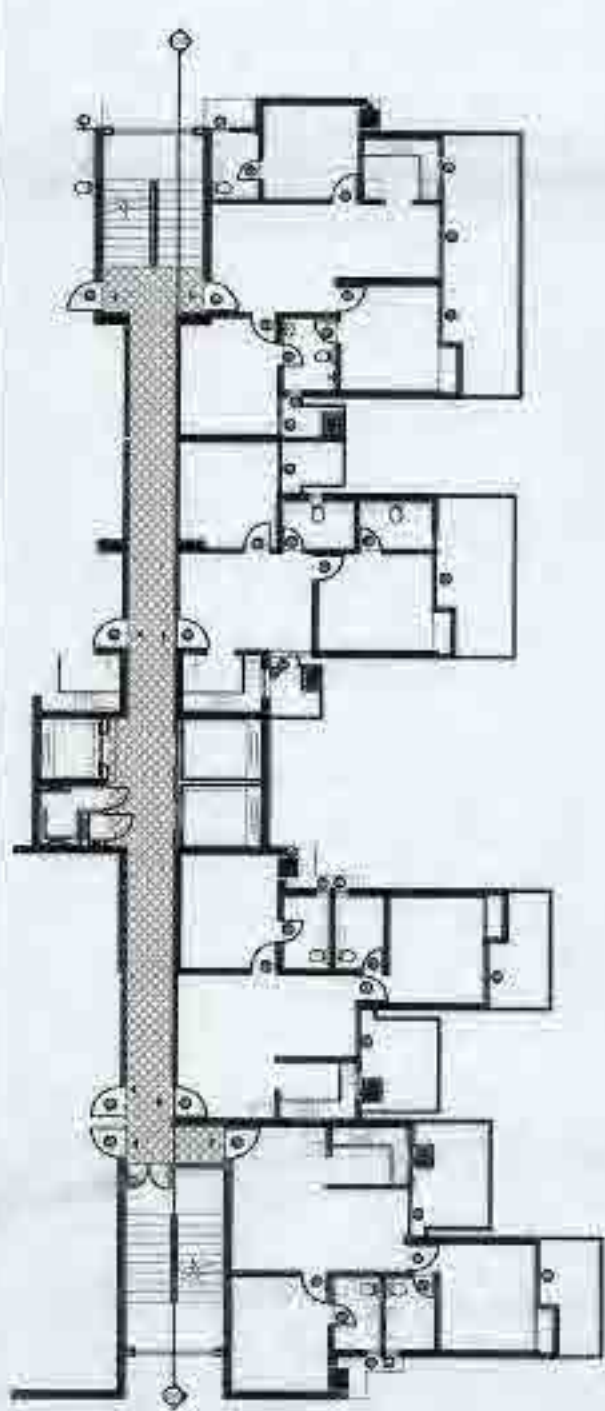
OWNER'S SIGN

ARCHITECT SIGN

GAURSONS PROMOTERS (PVT) LTD
[Signature]
[Signature]

BLOCK - K

DRG. NO. RSD-39



LAWN SIDE ELEVATION

Table with 4 columns: Item, 15% Prescribed FAR, Podium Floor FAR, and 15% Prescribed FAR. Rows include various building components like Lift Lobby, Fire Staircase, and Fire Staircase.

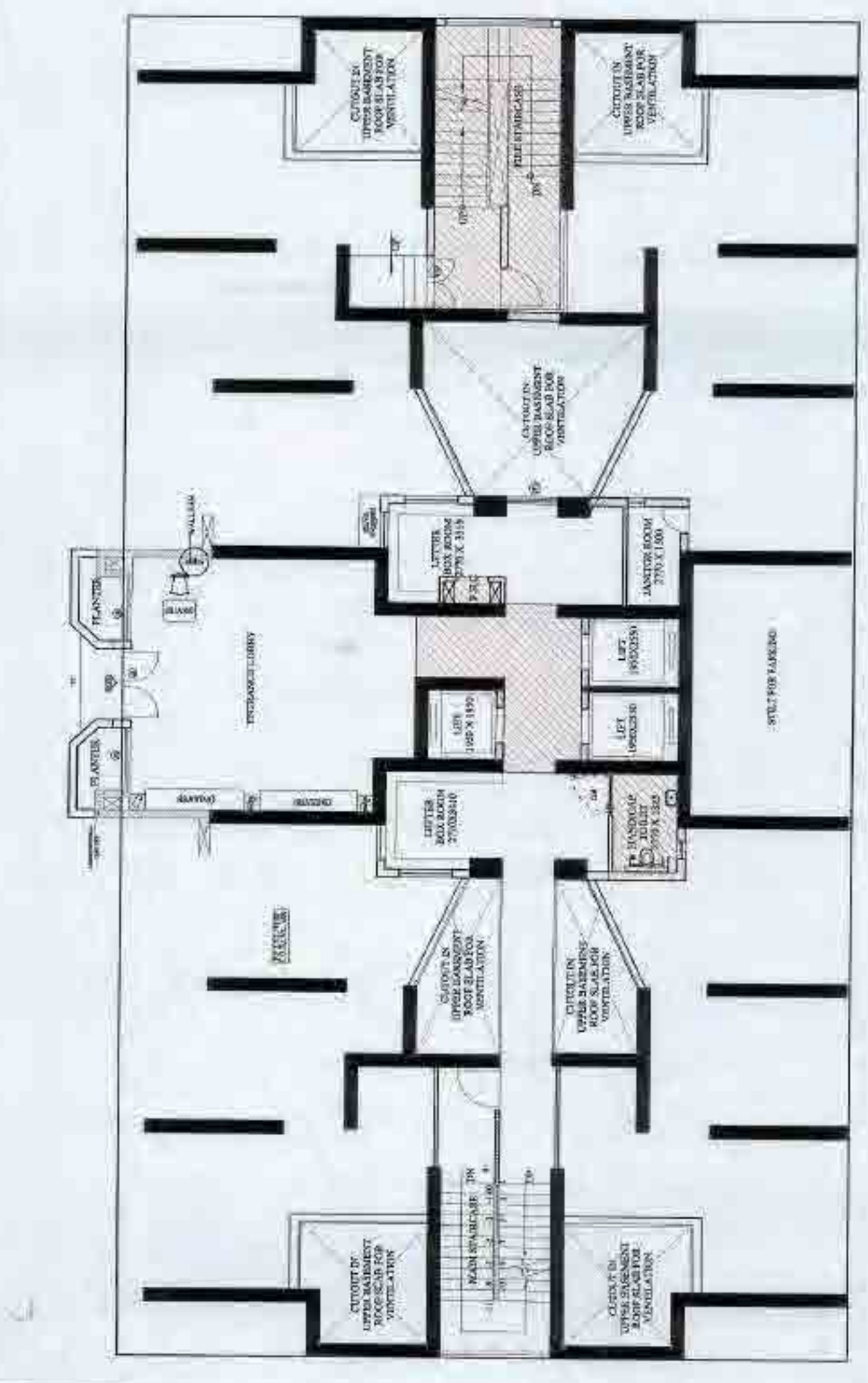
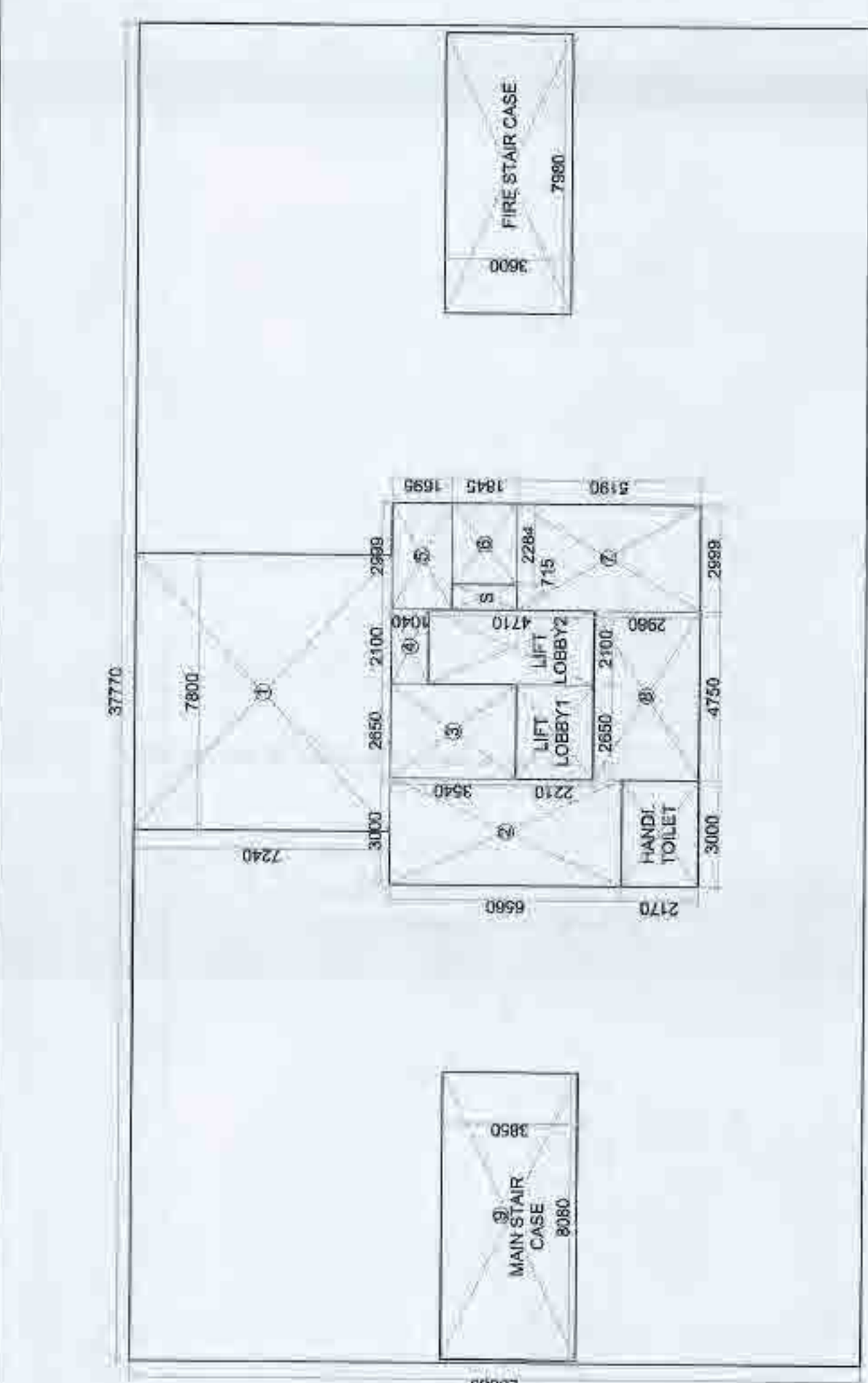


Table with 4 columns: Item, 15% Prescribed FAR, Podium Floor FAR, and 15% Prescribed FAR. Rows include various building components like Lift Lobby, Fire Staircase, and Fire Staircase.

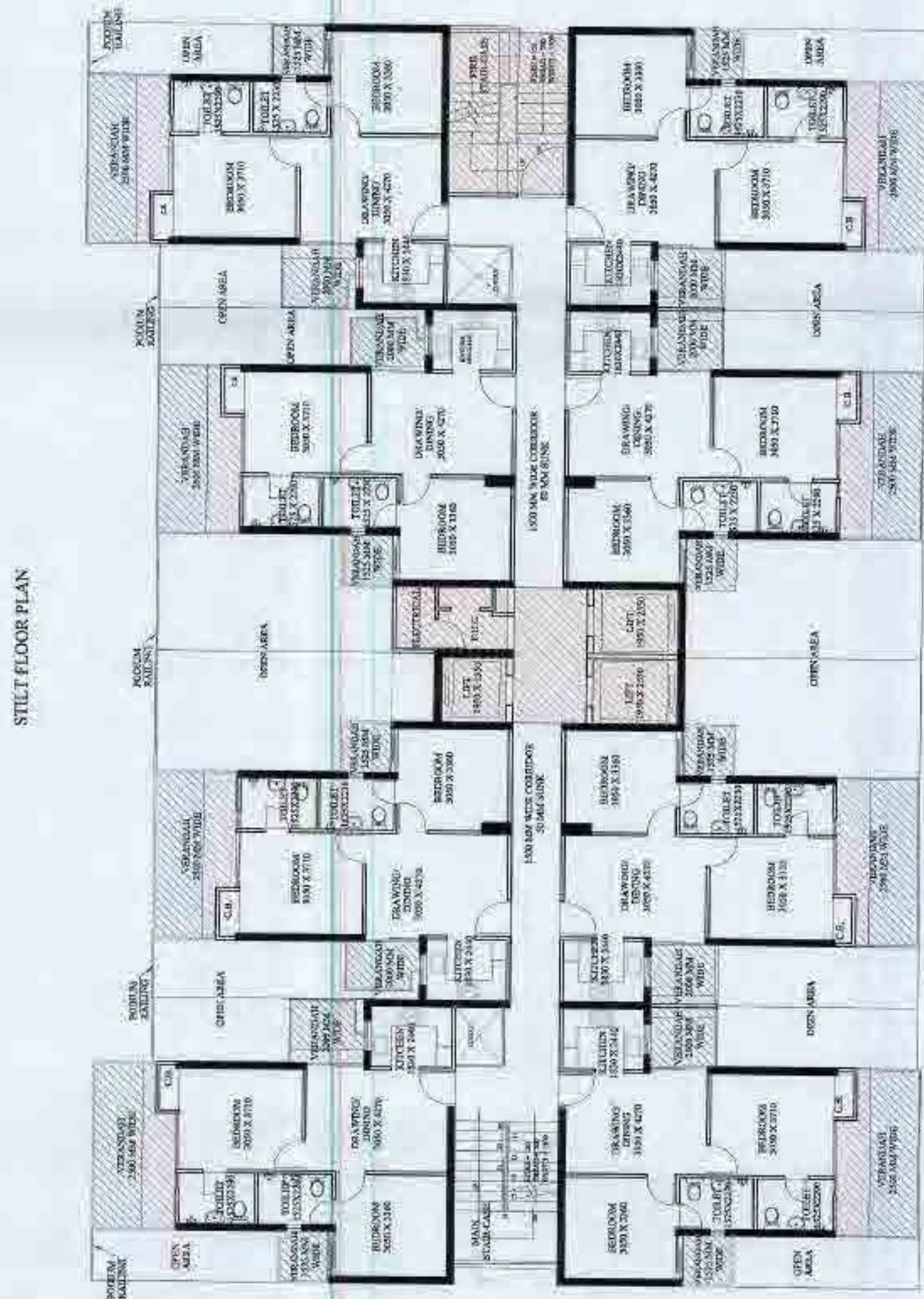
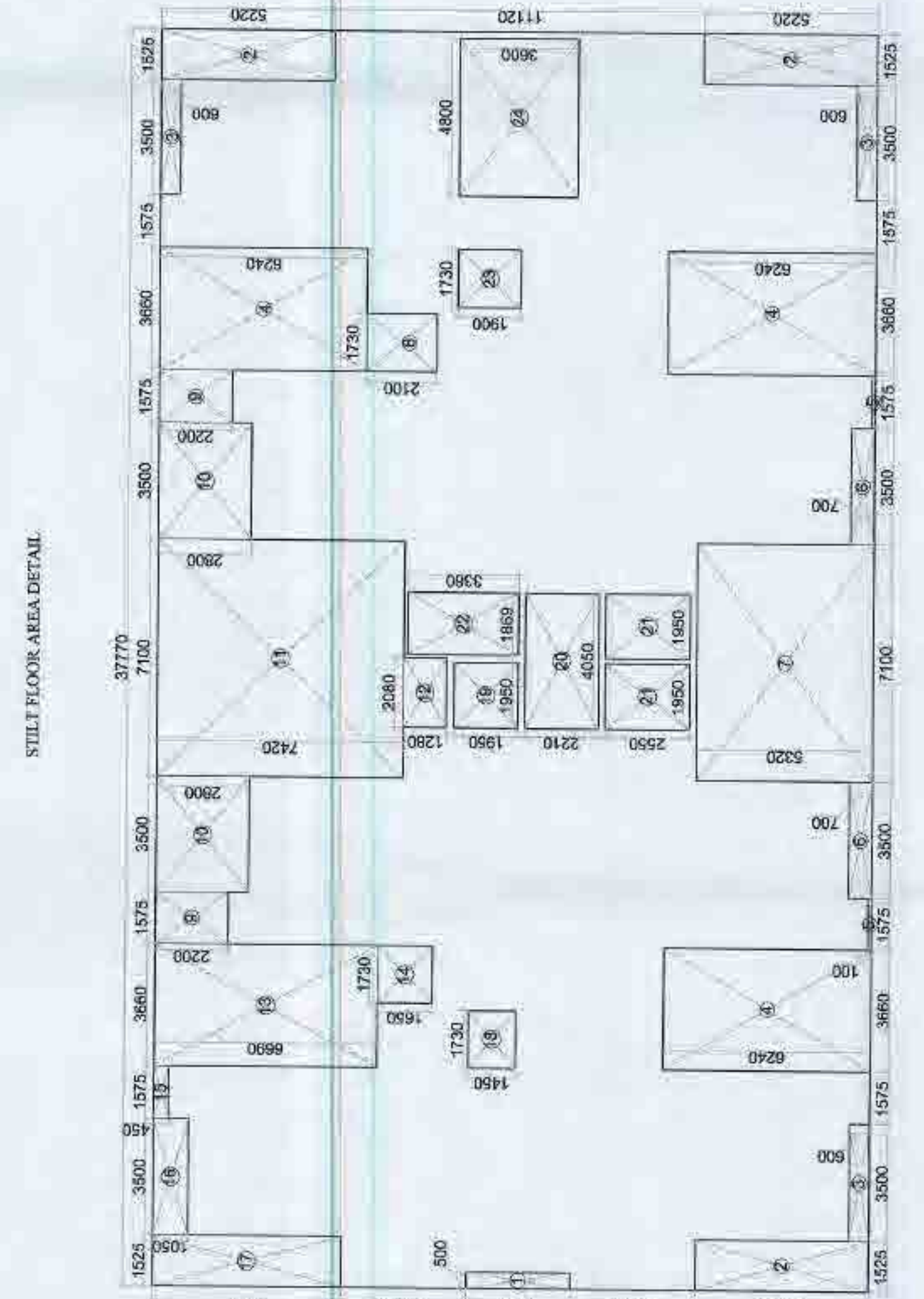
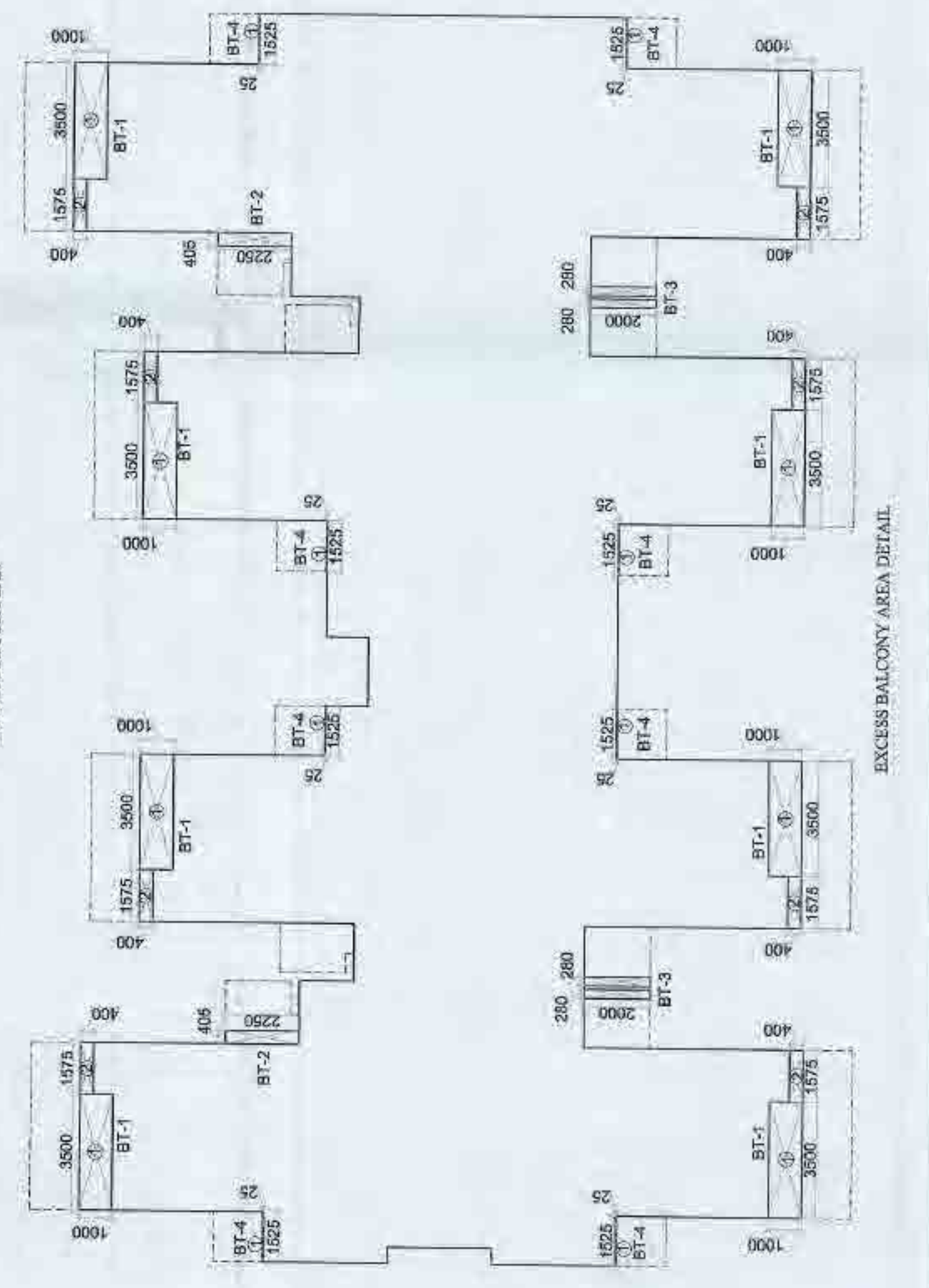
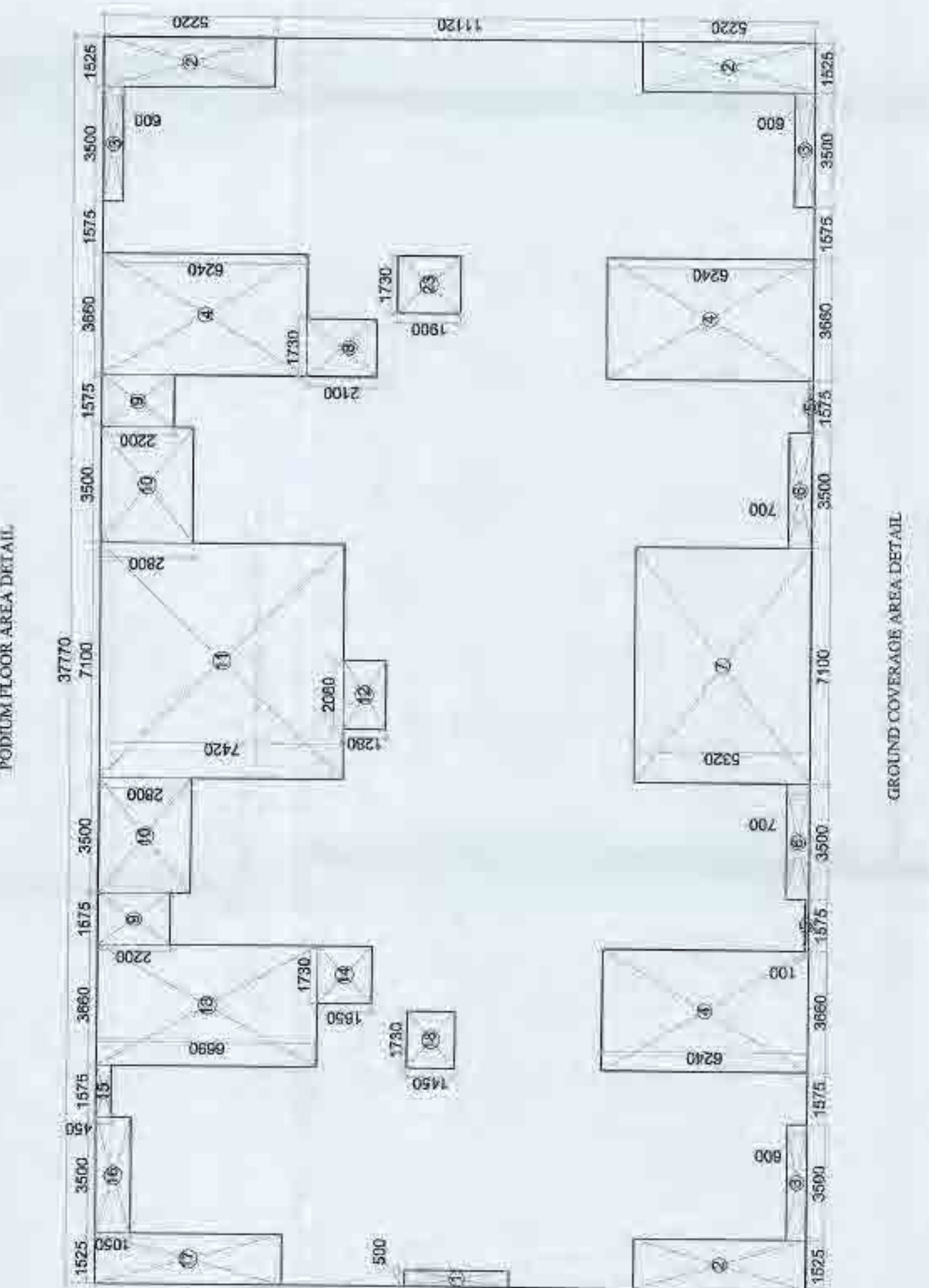
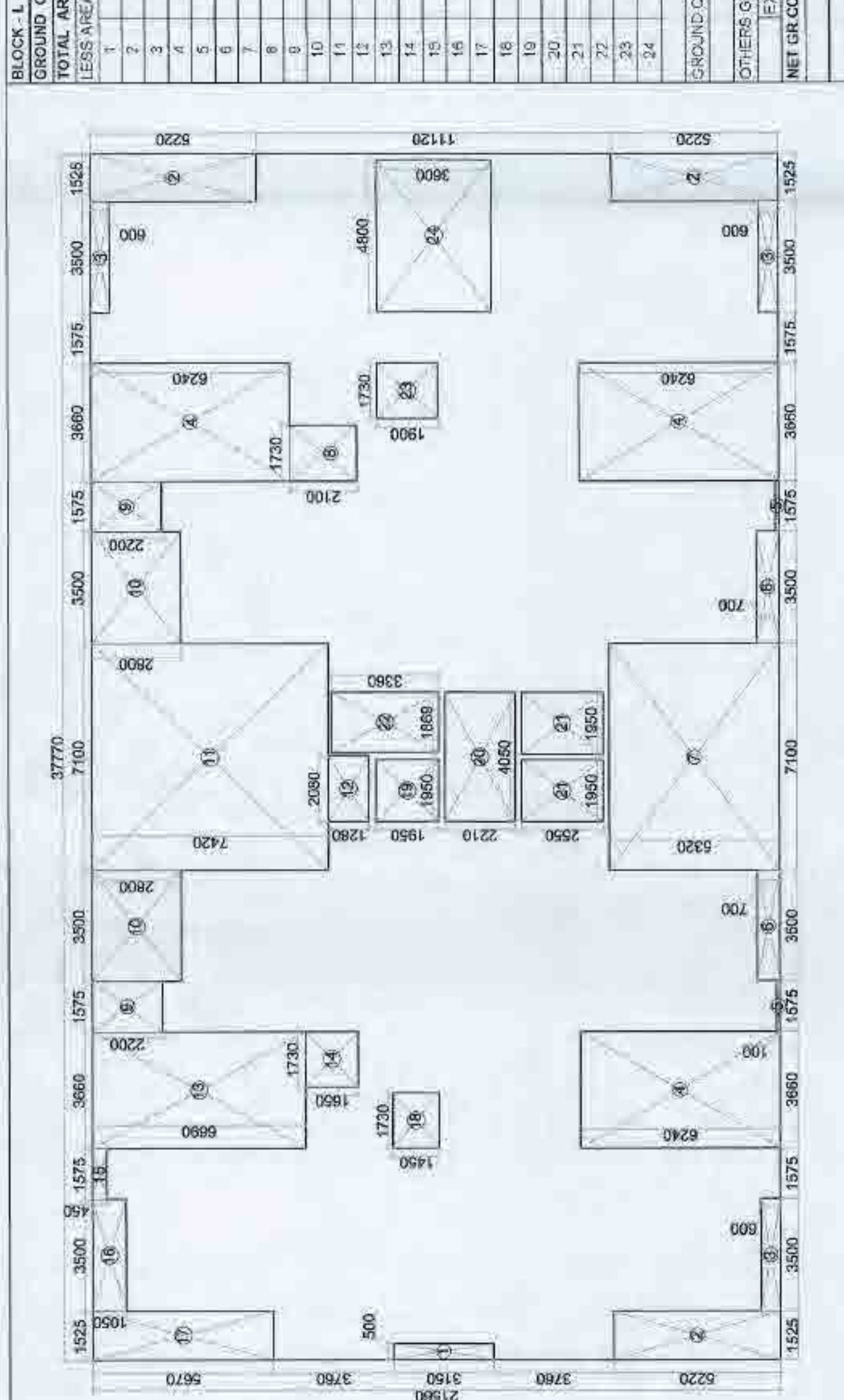


Table with 4 columns: Item, 15% Prescribed FAR, Podium Floor FAR, and 15% Prescribed FAR. Rows include various building components like Lift Lobby, Fire Staircase, and Fire Staircase.





PODIUM FLOOR F.A.R.									
TOTAL AREA	37,770	X	21,580	=	814,32				
LESS AREA									
1	1	X	0,500	X	3,150	=	1,575		
2	3	X	1,525	X	5,270	=	23,865		
3	4	X	3,500	X	0,500	=	7,000		
4	3	X	3,660	X	8,240	=	88,52		
5	2	X	1,575	X	0,100	=	0,32		
6	2	X	3,500	X	0,700	=	4,90		
7	1	X	7,100	X	5,320	=	37,77		
8	1	X	1,730	X	2,100	=	6,63		
9	2	X	1,575	X	2,200	=	6,93		
10	2	X	3,500	X	2,600	=	18,40		
11	1	X	7,100	X	7,420	=	52,66		
12	1	X	2,080	X	1,200	=	2,49		
13	1	X	3,660	X	6,660	=	24,46		
14	1	X	1,730	X	1,650	=	2,85		
15	1	X	1,575	X	0,450	=	0,71		
16	1	X	3,500	X	1,020	=	3,63		
17	1	X	1,525	X	5,870	=	8,85		
18	1	X	1,730	X	1,450	=	2,51		
19	1	X	1,650	X	1,050	=	3,81		
20	1	X	4,000	X	2,270	=	9,05		
21	2	X	1,850	X	2,550	=	9,50		
22	1	X	1,860	X	3,360	=	6,28		
23	1	X	1,730	X	1,900	=	3,29		
24	1	X	4,800	X	3,800	=	17,28		
TOTAL						=	321,89		
PODIUM FLOOR AREA = TOTAL AREA (1) LESS AREA									
	814,32	-	321,89	=	492,43				
EXCESS BALCONY AREA									
25% EXCESS BALCONY AREA IN FAR									
NET PODIUM FAR=TOTAL FAR + EXS BALCONY AREA									
	492,43	=	9,35	=	501,78				

TYPICAL FLOOR PLAN

TYPICAL FLOOR AREA DETAIL

TYPICAL FLOOR F.A.R.

TYPICAL FLOOR F.A.R.									
TOTAL AREA	37,770	X	21,580	=	814,32				
LESS AREA									
1	1	X	0,500	X	3,150	=	1,575		
2	3	X	1,525	X	5,270	=	23,865		
3	4	X	3,500	X	0,500	=	7,000		
4	3	X	3,660	X	8,240	=	88,52		
5	2	X	1,575	X	0,100	=	0,32		
6	2	X	3,500	X	0,700	=	4,90		
7	1	X	7,100	X	5,320	=	37,77		
8	1	X	1,730	X	2,100	=	6,63		
9	2	X	1,575	X	2,200	=	6,93		
10	2	X	3,500	X	2,600	=	18,40		
11	1	X	7,100	X	7,420	=	52,66		
12	1	X	2,080	X	1,200	=	2,49		
13	1	X	3,660	X	6,660	=	24,46		
14	1	X	1,730	X	1,650	=	2,85		
15	1	X	1,575	X	0,450	=	0,71		
16	1	X	3,500	X	1,020	=	3,63		
17	1	X	1,525	X	5,870	=	8,85		
18	1	X	1,730	X	1,450	=	2,51		
19	1	X	1,650	X	1,050	=	3,81		
20	1	X	4,000	X	2,270	=	9,05		
21	2	X	1,850	X	2,550	=	9,50		
22	1	X	1,860	X	3,360	=	6,28		
23	1	X	1,730	X	1,900	=	3,29		
24	1	X	4,800	X	3,800	=	17,28		
TOTAL						=	321,89		
TYPICAL FLOOR AREA = TOTAL AREA (1) LESS AREA									
	814,32	-	321,89	=	492,43				
EXCESS BALCONY AREA									
25% EXCESS BALCONY AREA IN FAR									
NET TYPICAL FAR= TOTAL FAR + EXS BALCONY AREA									
	492,43	=	9,35	=	501,78				

TYPICAL FLOOR F.A.R.									
TOTAL AREA	37,770	X	21,580	=	814,32				
LESS AREA									
1	1	X	0,500	X	3,150	=	1,575		
2	3	X	1,525	X	5,270	=	23,865		
3	4	X	3,500	X	0,500	=	7,000		
4	3	X	3,660	X	8,240	=	88,52		
5	2	X	1,575	X	0,100	=	0,32		
6	2	X	3,500	X	0,700	=	4,90		
7	1	X	7,100	X	5,320	=	37,77		
8	1	X	1,730	X	2,100	=	6,63		
9	2	X	1,575	X	2,200	=	6,93		
10	2	X	3,500	X	2,600	=	18,40		
11	1	X	7,100	X	7,420	=	52,66		
12	1	X	2,080	X	1,200	=	2,49		
13	1	X	3,660	X	6,660	=	24,46		
14	1	X	1,730	X	1,650	=	2,85		
15	1	X	1,575	X	0,450	=	0,71		
16	1	X	3,500	X	1,020	=	3,63		
17	1	X	1,525	X	5,870	=	8,85		
18	1	X	1,730	X	1,450	=	2,51		
19	1	X	1,650	X	1,050	=	3,81		
20	1	X	4,000	X	2,270	=	9,05		
21	2	X	1,850	X	2,550	=	9,50		
22	1	X	1,860	X	3,360	=	6,28		
23	1	X	1,730	X	1,900	=	3,29		
24	1	X	4,800	X	3,800	=	17,28		
TOTAL						=	321,89		
TYPICAL FLOOR AREA = TOTAL AREA (1) LESS AREA									
	814,32	-	321,89	=	492,43				
EXCESS BALCONY AREA									
25% EXCESS BALCONY AREA IN FAR									
NET TYPICAL FAR= TOTAL FAR + EXS BALCONY AREA									
	492,43	=	9,35	=	501,78				

TYPICAL FLOOR F.A.R.									
TOTAL AREA	37,770	X	21,580	=	814,32				
LESS AREA									
1	1	X	0,500	X	3,150	=	1,575		
2	3	X	1,525	X	5,270	=	23,865		
3	4	X	3,500	X	0,500	=	7,000		
4	3	X	3,660	X	8,240	=	88,52		
5	2	X	1,575	X	0,100	=	0,32		
6	2	X	3,500	X	0,700	=	4,90		
7	1	X	7,100	X	5,320	=	37,77		
8	1	X	1,730	X	2,100	=	6,63		
9	2	X	1,575	X	2,200	=	6,93		
10	2	X	3,500	X	2,600	=	18,40		
11	1	X	7,100	X	7,420	=	52,66		
12	1	X	2,080	X	1,200	=	2,49		
13	1	X	3,660	X	6,660	=	24,46		
14	1	X	1,730	X	1,650	=	2,85		
15	1	X	1,575	X	0,450	=	0,71		
16	1	X	3,500	X	1,020	=	3,63		
17	1	X	1,525	X	5,870	=	8,85		
18	1	X	1,730	X	1,450	=	2,51		
19	1	X	1,650	X	1,050	=	3,81		
20	1	X	4,000	X	2,270	=	9,05		
21	2	X	1,850	X	2,550	=	9,50		
22	1	X	1,860	X	3,360	=	6,28		
23	1	X	1,730	X	1,900	=	3,29		
24	1	X	4,800	X	3,800	=	17,28		
TOTAL						=	321,89		
TYPICAL FLOOR AREA = TOTAL AREA (1) LESS AREA									
	814,32	-	321,89	=	492,43				
EXCESS BALCONY AREA									
25% EXCESS BALCONY AREA IN FAR									
NET TYPICAL FAR= TOTAL FAR + EXS BALCONY AREA									
	492,43	=	9,35	=	501,78				

TYPICAL FLOOR F.A.R.									
TOTAL AREA	37,770	X	21,580	=	814.32				
LESS AREA									
1	1	X	0.500	X	3.150	=	1.58		
2	3	X	1.525	X	5.270	=	23.88		
3	4	X	3.500	X	0.500	=	7.00		
4	3	X	3.660	X	6.240	=	68.52		
5	2	X	1.575	X	0.100	=	0.32		
6	2	X	3.500	X	0.700	=	4.90		
7	1	X	7.100	X	5.320	=	37.77		
8	1	X	1.730	X	2.100	=	3.63		
9	2	X	1.575	X	2.200	=	6.93		
10	2	X	3.500	X	2.600	=	19.90		
11	1	X	7.100	X	7.420	=	52.68		
12	1	X	2.080	X	1.280	=	2.66		
13	1	X	3.660	X	6.660	=	24.46		
14	1	X	1.730	X	1.650	=	2.85		
15	1	X	1.575	X	0.450	=	0.71		
16	1	X	3.500	X	1.050	=	3.88		
17	1	X	1.525	X	5.870	=	8.85		
18	1	X	1.730	X	1.450	=	2.51		
19	1	X	1.850	X	1.050	=	3.81		
20	1	X	4.050	X	2.270	=	9.05		
21	2	X	1.950	X	2.550	=	9.95		
22	1	X	1.668	X	3.360	=	6.28		
23	1	X	1.730	X	1.900	=	3.29		
24	1	X	4.800	X	3.800	=	17.28		
					TOTAL	=	321.89		
TYPICAL FLOOR AREA = TOTAL AREA (1) LESS AREA									
	814.32	-	321.89	=	492.43				
EXCESS BALCONY AREA									
26% EXCESS BALCONY AREA IN F.A.R. = 9.5%									
NET TYPICAL F.A.R. = TOTAL F.A.R. + 26% BALCONY AREA									
	492.43	+	9.5%	=	501.93				

15% PRESCRIBED F.A.R.									
ITEM									