

LEGEND:

SYMBOL	DESCRIPTION	IN mm (FEET)
[Symbol]	6/15A SWITCH SOCKET OUTLET FOR LIGHT	420(13.78)
[Symbol]	6/15A SWITCH SOCKET OUTLET FOR DATA, LEVLS	420(13.78)
[Symbol]	15A POWER POINT WITH 15A SWITCH (UPS)	420(13.78)
[Symbol]	DISTRIBUTION BOARD (DB FOR LIGHT)	420(13.78)
[Symbol]	DISTRIBUTION BOARD (DB FOR UPS)	420(13.78)
[Symbol]	DISTRIBUTION BOARD (DB FOR POWER)	420(13.78)
[Symbol]	LV-BOX FOR DATA SYSTEM	420(13.78)
[Symbol]	LV-ISOLATOR BOX	420(13.78)
[Symbol]	PERFORATED TYPE CABLE TRAY FOR POWER	
[Symbol]	PERFORATED TYPE CABLE TRAY FOR DATA	
[Symbol]	LADDER TYPE CABLE TRAY FOR POWER	

OWNER:
 ARDIA PROJECTS LLP
 FLAT NO-1018, 1ST FLOOR
 PLOT NO-1/BB2, SUSHANT GOLF CITY
 LUCKNOW, UTTAR PRADESH-226030

PROJECT:
 ARDIA DOWNTOWN
 AT SHAHEED PATH, LUCKNOW

ARCHITECT:

SIKKA ASSOCIATES ARCHITECTS
 101/102, ANAND VIHAR, LUCKNOW-226016, UTTAR PRADESH, INDIA
 T: +91 522 5228 | F: +91 522 5228 | S: 52252222 | W: WWW.SIKKA.AE

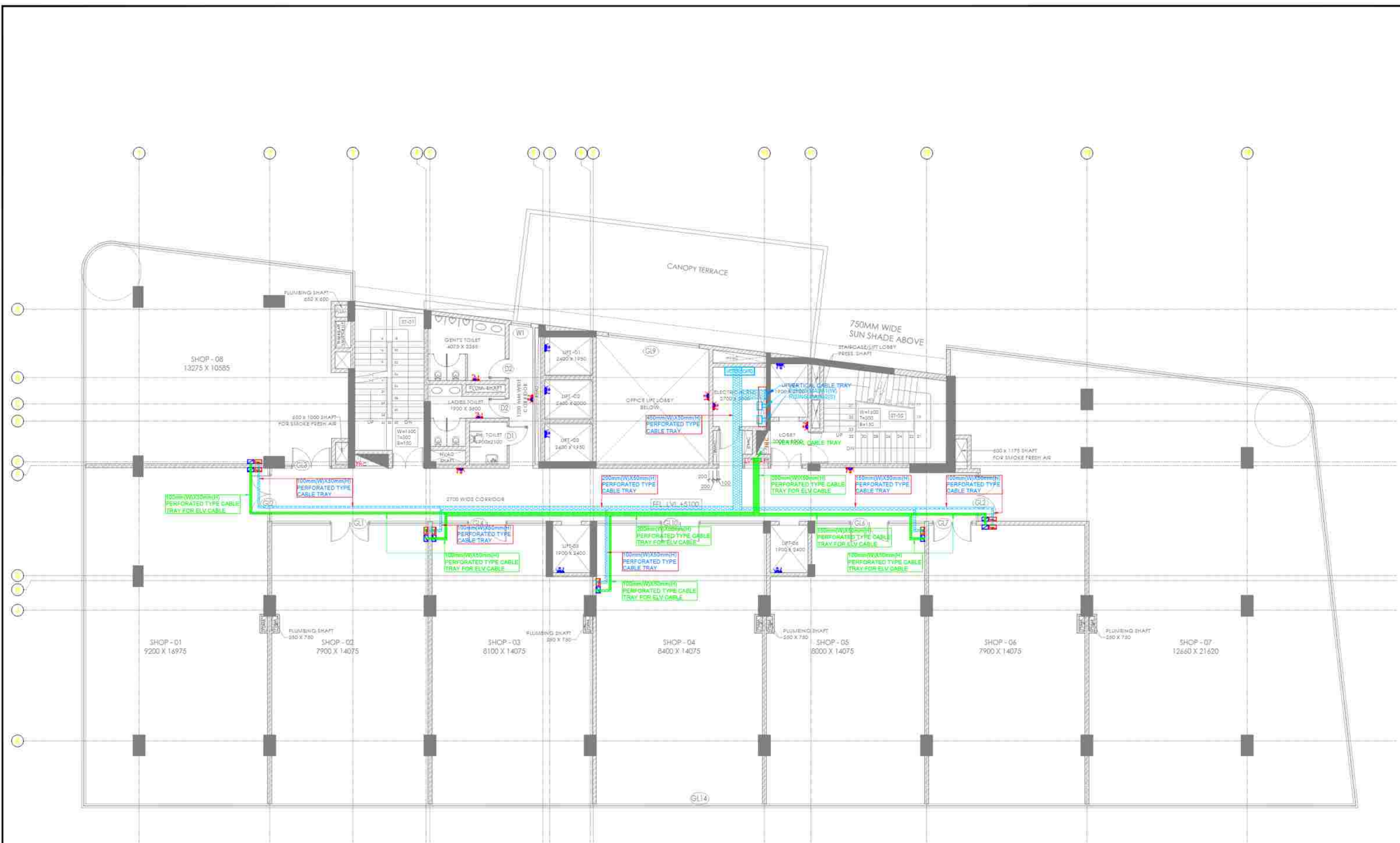
SEAL	ISSUED FOR
	INFORMATION & REVIEW
	TENDER
	SUBMISSION
	RFI
	AS BUILT

REVISIONS:	
#	DESCRIPTION

SCALE: 1:100
 DATE ISSUED: 30.05.2025
 DRAWN BY: SANDEEP
 CHECKED BY: SUBRATA

DRAWING:
GROUND FLOOR POWER LAYOUT

NO: ARD/AR/PWR-01 **REV:** R0



FIRST FLOOR PLAN

LEGEND -

SYMBOL	DESCRIPTION	U.H. PROFF. (mm UPT. BOTTOM OF BOY)
[Symbol]	6/16A SWITCH SOCKET OUTLET FOR LIFT	+1800mm
[Symbol]	6/16A SWITCH SOCKET OUTLET	+230/1100mm
[Symbol]	6/16A SWITCH SOCKET OUTLET FOR HAND DRIVER	+1100mm
[Symbol]	16A POWER POINT WITH 10A SWITCH (UPS)	+1100mm
[Symbol]	DISTRIBUTION BOARD (DB FOR LIGHT)	+1650mm
[Symbol]	DISTRIBUTION BOARD (DB FOR UPS)	+1800mm
[Symbol]	DISTRIBUTION BOARD (DB FOR POWER)	+1800mm
[Symbol]	LV-BOX FOR DATA SYSTEM	
[Symbol]	MV-ISOLATOR BOX	
[Symbol]	PERFORATED TYPE CABLE TRAY FOR POWER	
[Symbol]	PERFORATED TYPE CABLE TRAY FOR DATA	
[Symbol]	LADDER TYPE CABLE TRAY FOR POWER	

OWNER
 ARDIA PROJECTS LLP
 FLAT NO-101B, 1ST FLOOR
 PLOT NO-1/B82, SUSHANT GOLF CITY
 LUCKNOW , UTTAR PRADESH-226030

PROJECT
 ARDIA DOWNTOWN
 AT SHAHEED PATH, LUCKNOW

ARCHITECT

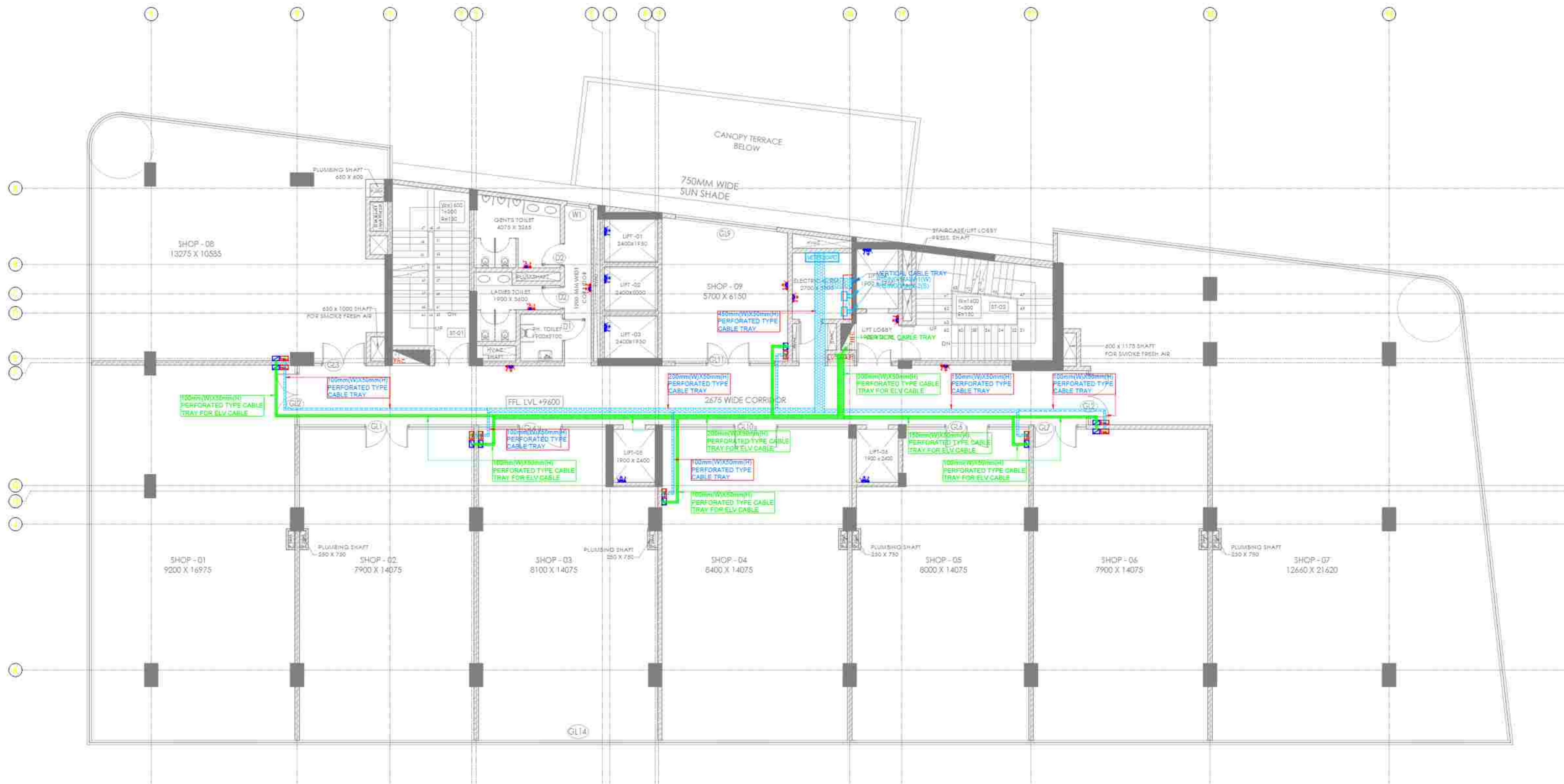
 SIKKA ASSOCIATES ARCHITECTS
 A-301, SERVICE BUILDING, SUPRANAGAR, INDIA PRADESH, LUCKNOW
 T: +91 11 4202 3225 | F: +91 11 2626 4481 | E: saas@saasarchitect.com | W: www.saasarchitect.com

SEAL	ISSUED FOR	
	INFORMATION & REVIEW	TENDER
	<input type="checkbox"/>	<input type="checkbox"/>
	<input type="checkbox"/>	<input type="checkbox"/>
	<input checked="" type="checkbox"/>	<input type="checkbox"/>
	<input type="checkbox"/>	<input type="checkbox"/>

#	DATE	DESCRIPTION

SCALE: 1:100
 DATE ISSUED: 30.05.2025
 DRAWN BY: SANDEEP
 CHECKED BY: SUBRATA

DRAWING
 FIRST FLOOR POWER LAYOUT
 DWG NO. ARD/AR/PWR-04 R0



SECOND FLOOR PLAN

LEGEND -

SYMBOL	DESCRIPTION	U.H. FROM F.F. (mm) UPTO BOTTOM OF BOY
[Symbol]	6/16A SWITCH SOCKET OUTLET FOR LIFT	+1800mm
[Symbol]	6/16A SWITCH SOCKET OUTLET	+230/1100mm
[Symbol]	6/16A SWITCH SOCKET OUTLET FOR HAND DRYER	+1100mm
[Symbol]	16A POWER POINT WITH 16A SWITCH (UPS)	+1100mm
[Symbol]	DISTRIBUTION BOARD (DB FOR LIGHT)	+1650mm
[Symbol]	DISTRIBUTION BOARD (DB FOR UPS)	+1800mm
[Symbol]	DISTRIBUTION BOARD (DB FOR POWER)	+1800mm
[Symbol]	LV-BOX FOR DATA SYSTEM	
[Symbol]	MV-ISOLATOR BOX	
[Symbol]	PERFORATED TYPE CABLE TRAY FOR POWER	
[Symbol]	PERFORATED TYPE CABLE TRAY FOR DATA	
[Symbol]	LADDER TYPE CABLE TRAY FOR POWER	

OWNER
 ARDIA PROJECTS LLP
 FLAT NO-101B, 1ST FLOOR
 PLOT NO-1/B82, SUSHANT GOLF CITY
 LUCKNOW, UTTAR PRADESH-226030

PROJECT
 ARDIA DOWNTOWN
 AT SHAHEED PATH, LUCKNOW

ARCHITECT

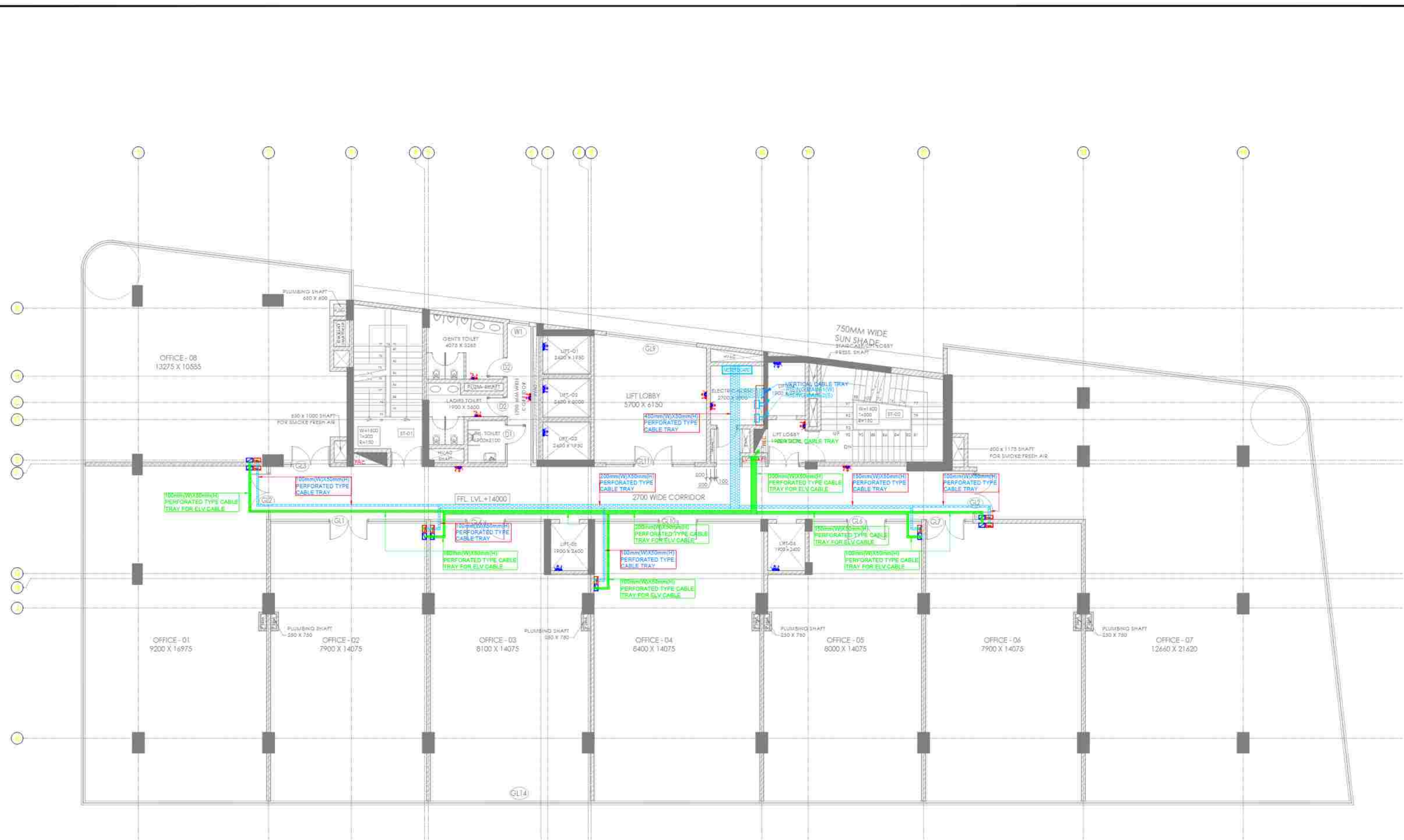
 SIKKA ASSOCIATES ARCHITECTS
 A-301, SERVICE BUILDING, SUPRANAGAR SOCIETY, NEW ORIENTAL NEAR 110/200
 T: +91 11 4222 3225 | F: +91 11 2626 4481 | E: saas@saasarchitect.com | W: www.saasarchitect.com

SEAL	ISSUED FOR	
	INFORMATION & REVIEW	TENDER
	<input type="checkbox"/>	<input type="checkbox"/>
	<input type="checkbox"/>	<input type="checkbox"/>
	<input checked="" type="checkbox"/>	<input type="checkbox"/>
	<input type="checkbox"/>	<input type="checkbox"/>

REVISIONS	
#	DESCRIPTION

SCALE: 1:100
 DATE ISSUED: 30.05.2025
 DRAWN BY: SANDEEP
 CHECKED BY: SUBRATA

DRAWING
 SECOND FLOOR
 POWER LAYOUT
 DWG NO. ARD/AR/PWR-05 R0



3RD FLOOR PLAN

LEGEND -

SYMBOL	DESCRIPTION	U.H. FROM F.F. (mm) UPTO BOTTOM OF BOY
[Symbol]	6/16A SWITCH SOCKET OUTLET FOR LIFT	+1800mm
[Symbol]	6/16A SWITCH SOCKET OUTLET	+230/1100mm
[Symbol]	6/16A SWITCH SOCKET OUTLET FOR HAND DRIVER	+1100mm
[Symbol]	16A POWER POINT WITH 16A SWITCH (UPS)	+1100mm
[Symbol]	DISTRIBUTION BOARD (DB FOR LIGHT)	+1650mm
[Symbol]	DISTRIBUTION BOARD (DB FOR UPS)	+1800mm
[Symbol]	DISTRIBUTION BOARD (DB FOR POWER)	+1800mm
[Symbol]	LV-BOX FOR DATA SYSTEM	
[Symbol]	MV-ISOLATOR BOX	
[Symbol]	PERFORATED TYPE CABLE TRAY FOR POWER	
[Symbol]	PERFORATED TYPE CABLE TRAY FOR DATA	
[Symbol]	LADDER TYPE CABLE TRAY FOR POWER	

OWNER
 ARDIA PROJECTS LLP
 FLAT NO-101B, 1ST FLOOR
 PLOT NO-1/B82, SUSHANT GOLF CITY
 LUCKNOW, UTTAR PRADESH-226030

PROJECT
 ARDIA DOWNTOWN
 AT SHAHEED PATH, LUCKNOW

ARCHITECT

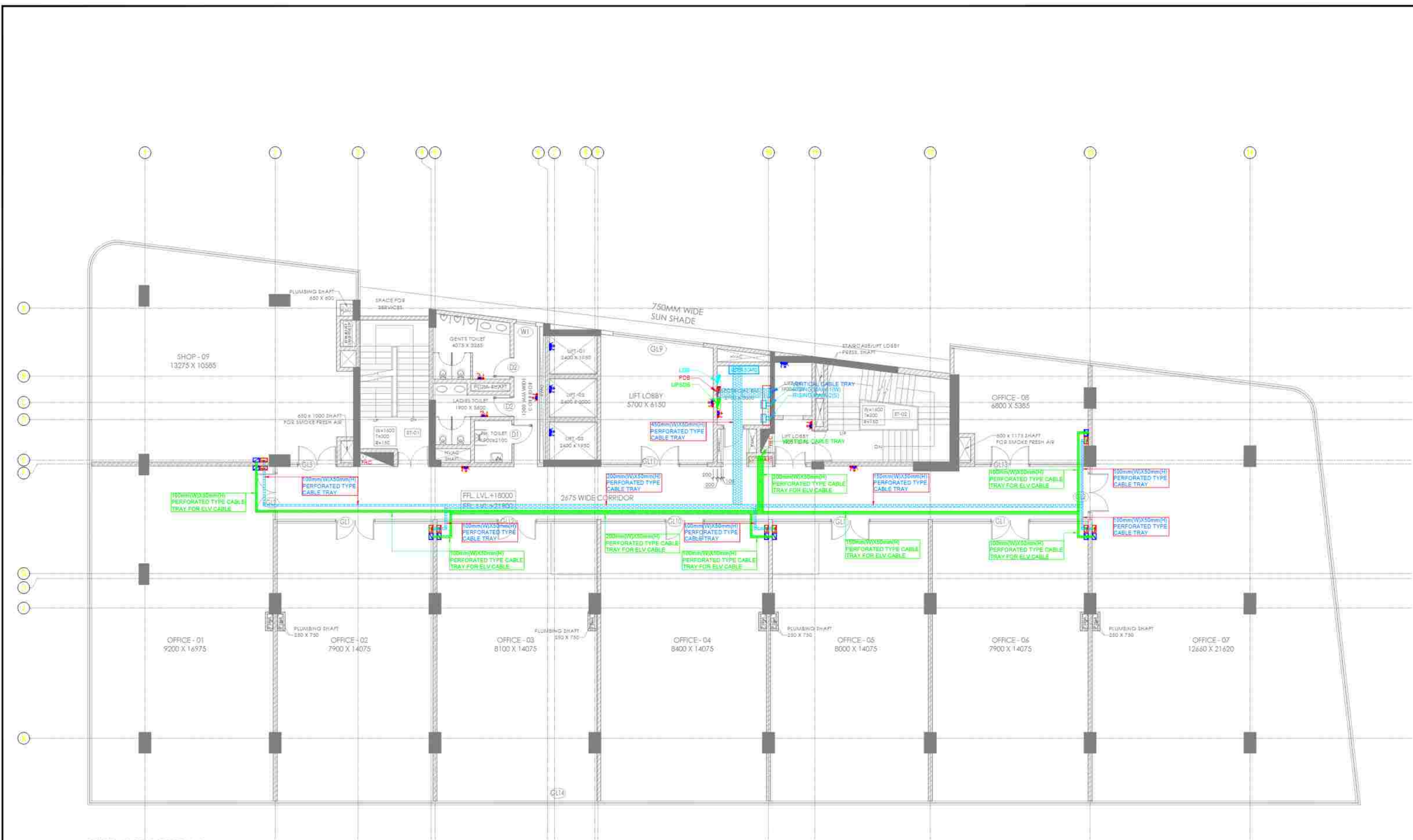
 SIKKA ASSOCIATES ARCHITECTS
 A-301, SERVICE BUILDING, SUPERNAGAR INDUSTRIAL AREA, NEAR IIT, LUCKNOW
 T: +91 11 422 3225 | F: +91 11 2626 4481 | E: saas@saasarchitect.com | W: www.saasarchitect.com

SEAL	ISSUED FOR	
	INFORMATION & REVIEW	TENDER
	<input type="checkbox"/>	<input type="checkbox"/>
	<input type="checkbox"/>	<input type="checkbox"/>
	<input checked="" type="checkbox"/>	<input type="checkbox"/>
	<input type="checkbox"/>	<input type="checkbox"/>

REVISIONS	
#	DESCRIPTION

SCALE: 1:100
 DATE ISSUED: 30.05.2025
 DRAWN BY: SANDEEP
 CHECKED BY: SUBRATA

DRAWING
 THIRD FLOOR POWER LAYOUT
 DWG NO. ARD/AR/PWR-06 R0



TYPICAL FLOOR PLAN
4TH & 5TH FLOOR

LEGEND -

SYMBOL	DESCRIPTION	U.H. FROM F.F. (mm) UPTO BOTTOM OF BOY
	6/16A SWITCH SOCKET OUTLET FOR LIFT	+1800mm
	6/16A SWITCH SOCKET OUTLET FOR HAND DRIVER	+230/100mm
	16A POWER POINT WITH 16A SWITCH (UPS)	+1100mm
	DISTRIBUTION BOARD (DB FOR LIGHT)	+1650mm
	DISTRIBUTION BOARD (DB FOR POWER)	+1800mm
	LV-BOX FOR DATA SYSTEM	
	LV-ISOLATOR BOX	
	PERFORATED TYPE CABLE TRAY FOR POWER	
	PERFORATED TYPE CABLE TRAY FOR DATA	
	LADDER TYPE CABLE TRAY FOR POWER	

OWNER
ARDIA PROJECTS LLP
 FLAT NO-101B, 1ST FLOOR
 PLOT NO-1/BB2, SUSHANT GOLF CITY
 LUCKNOW , UTTAR PRADESH-226030

PROJECT
ARDIA DOWNTOWN
 AT SHAHEED PATH, LUCKNOW

ARCHITECT

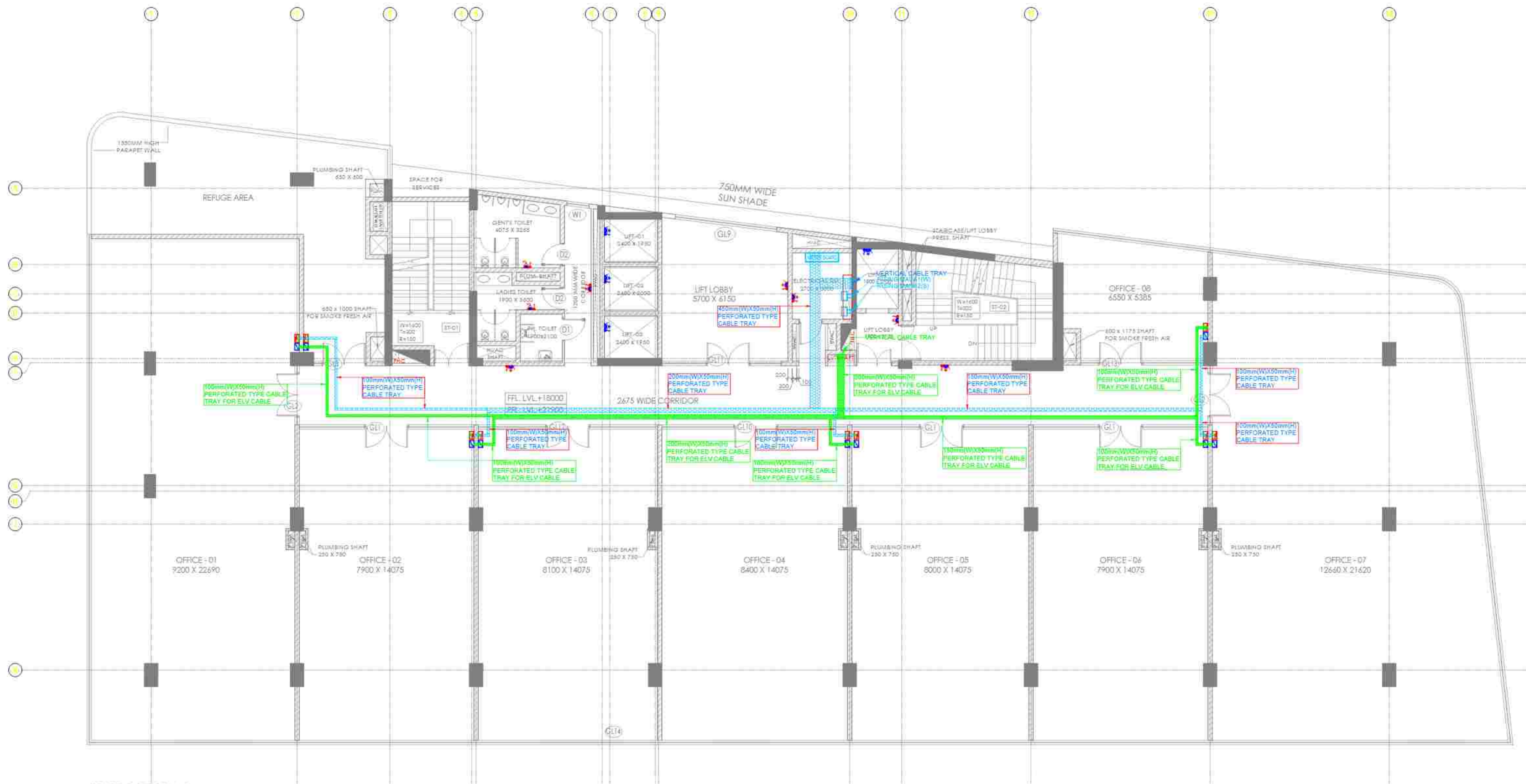
SIKKA ASSOCIATES ARCHITECTS
 4, 2ND FLOOR, SIKKA BUILDING, SIKKA COLONY, NEAR 100' RD
 T: +91 11 422 3225 | F: +91 11 262 4481 | E: saas@siikkaarch.com | W: www.siikkaarch.com

SEAL	ISSUED FOR
	<input type="checkbox"/> INFORMATION & REVIEW <input type="checkbox"/> TENDER <input type="checkbox"/> SUBMISSION <input checked="" type="checkbox"/> GFC <input type="checkbox"/> AS BUILT

#	DATE	DESCRIPTION

SCALE: 1:100
 DATE ISSUED: 30.05.2025
 DRAWN BY: SANDEEP
 CHECKED BY: SUBRATA

DRAWING
4TH & 5TH FLOOR
POWER LAYOUT
DWG NO. ARD/AR/PWR-07 R0



LEGEND -

SYMBOL	DESCRIPTION	U.H. FROM F.F. (mm UPTO BOTTOM OF BOY)
[Symbol]	6/16A SWITCH SOCKET OUTLET FOR LIFT	+1800mm
[Symbol]	6/16A SWITCH SOCKET OUTLET	+230/1100mm
[Symbol]	6/16A SWITCH SOCKET OUTLET FOR HAND DRIVER	+1100mm
[Symbol]	16A POWER POINT WITH 16A SWITCH (UPS)	+1100mm
[Symbol]	DISTRIBUTION BOARD (DB FOR LIGHT)	+1650mm
[Symbol]	DISTRIBUTION BOARD (DB FOR UPS)	+1800mm
[Symbol]	DISTRIBUTION BOARD (DB FOR POWER)	+1800mm
[Symbol]	LV-BOX FOR DATA SYSTEM	
[Symbol]	MV-ISOLATOR BOX	
[Symbol]	PERFORATED TYPE CABLE TRAY FOR POWER	
[Symbol]	PERFORATED TYPE CABLE TRAY FOR DATA	
[Symbol]	LADDER TYPE CABLE TRAY FOR POWER	

OWNER
 ARDIA PROJECTS LLP
 FLAT NO-101B, 1ST FLOOR
 PLOT NO-1/B82, SUSHANT GOLF CITY
 LUCKNOW, UTTAR PRADESH-226030

PROJECT
 ARDIA DOWNTOWN
 AT SHAHEED PATH, LUCKNOW

ARCHITECT

 SIKKA ASSOCIATES ARCHITECTS
 4, 30/1, SAHIBGANGA, SAHIBGANJ, LUCKNOW
 T: +91 11 4222 3225 | F: +91 11 2626 4481 | E: saas@saasarchitect.com | W: www.saasarchitect.com

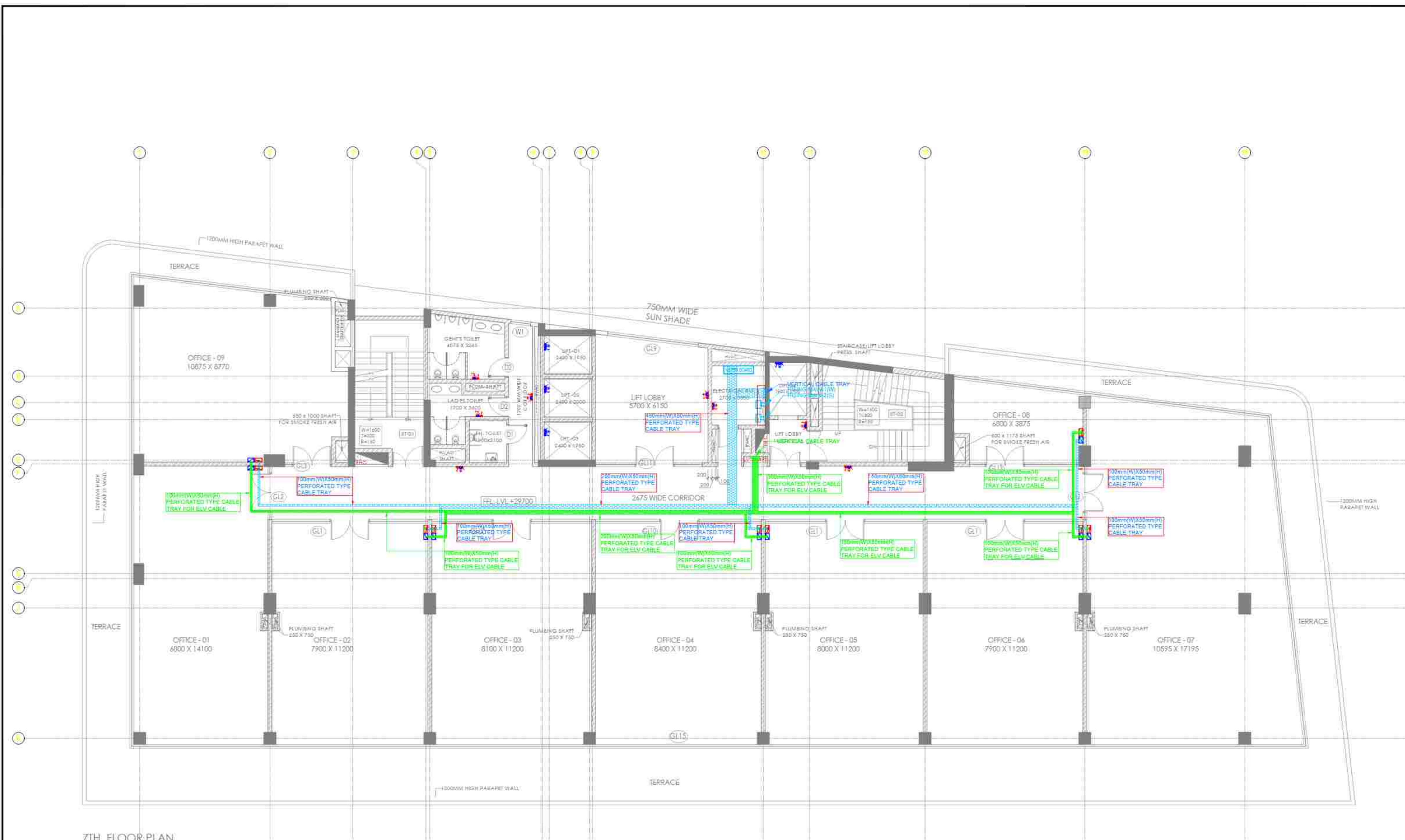
SEAL	ISSUED FOR
	INFORMATION & REVIEW
	TENDER
	SUBMISSION
	GFC
	AS BUILT

REVISIONS	
#	DESCRIPTION

SCALE: 1:100
 DATE ISSUED: 30.05.2025
 DRAWN BY: SANDEEP
 CHECKED BY: SUBRATA

DRAWING
 6TH FLOOR POWER LAYOUT
 DWG NO. ARD/AR/PWR-08 R0

6TH FLOOR PLAN



7TH FLOOR PLAN

LEGEND -

SYMBOL	DESCRIPTION	U.H. FROM F.F. (mm) UPTO BOTTOM OF BOY
	6/16A SWITCH SOCKET OUTLET FOR LIFT	+1800mm
	6/16A SWITCH SOCKET OUTLET	+230/100mm
	6/16A SWITCH SOCKET OUTLET FOR HAND DRIVER	+1100mm
	16A POWER POINT WITH 16A SWITCH (UPS)	+1100mm
	DISTRIBUTION BOARD (DB FOR LIGHT)	+1650mm
	DISTRIBUTION BOARD (DB FOR UPS)	+1800mm
	DISTRIBUTION BOARD (DB FOR POWER)	+1800mm
	LV-BOX FOR DATA SYSTEM	
	LV-ISOLATOR BOX	
	PERFORATED TYPE CABLE TRAY FOR POWER	
	PERFORATED TYPE CABLE TRAY FOR DATA	
	LADDER TYPE CABLE TRAY FOR POWER	

OWNER
 ARDIA PROJECTS LLP
 FLAT NO-101B, 1ST FLOOR
 PLOT NO-1/B82, SUSHANT GOLF CITY
 LUCKNOW, UTTAR PRADESH-226030

PROJECT
 ARDIA DOWNTOWN
 AT SHAHEED PATH, LUCKNOW

ARCHITECT

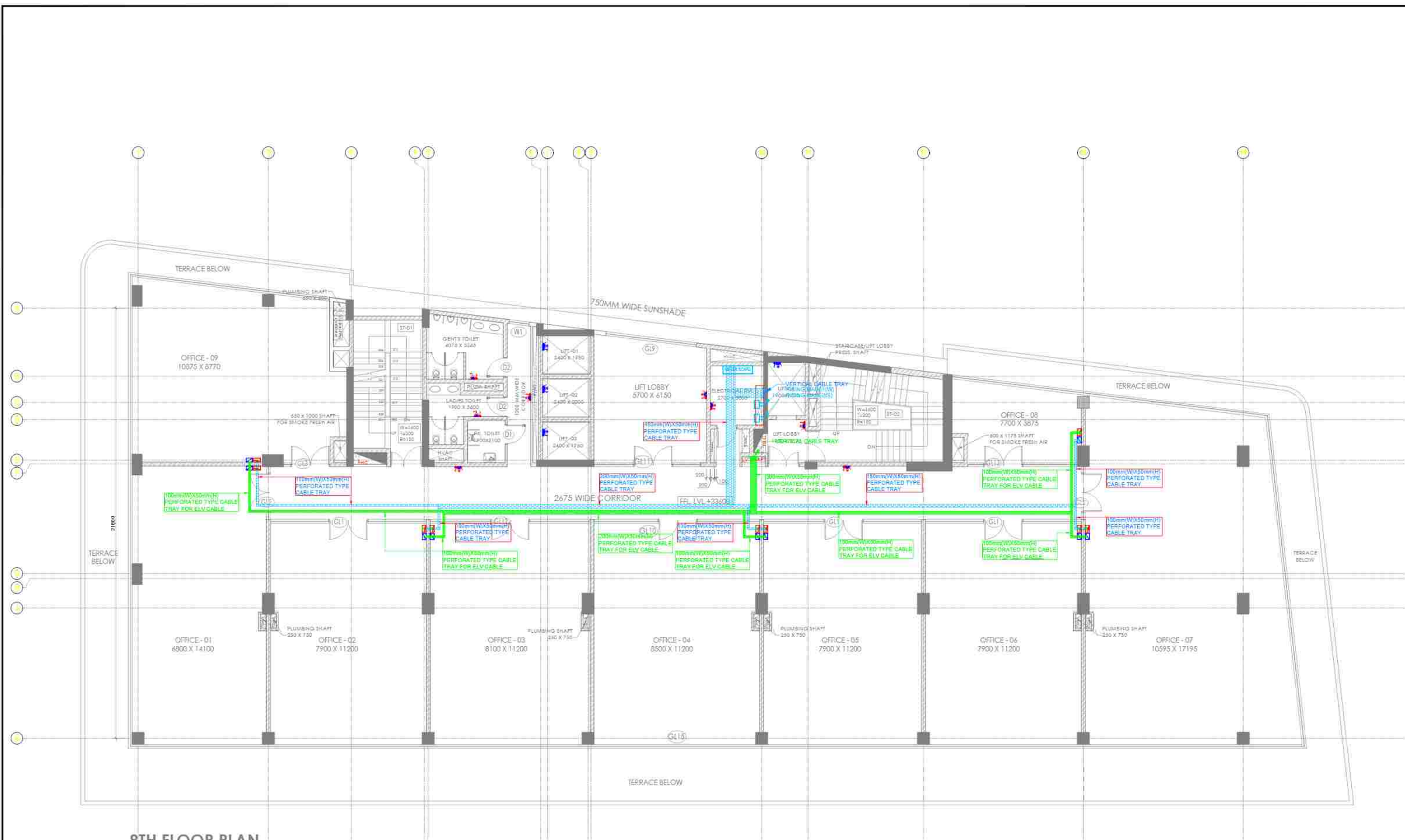
 SIKKA ASSOCIATES ARCHITECTS
 A-301, SERVICE SQUARE, SPECIALIZING IN CIVIL, MECHANICAL, ELECTRICAL & PLUMBING PROJECTS
 T: +91 11 4222 3225 | F: +91 11 2626 4481 | E: saas@saasarchitect.com | W: www.saasarchitect.com

SEAL	ISSUED FOR
	<input type="checkbox"/> INFORMATION & REVIEW <input type="checkbox"/> TENDER <input type="checkbox"/> SUBMISSION <input checked="" type="checkbox"/> GFC <input type="checkbox"/> AS BUILT

REVISIONS	
#	DESCRIPTION

SCALE: 1:100
 DATE ISSUED: 30.05.2025
 DRAWN BY: SANDEEP
 CHECKED BY: SUBRATA

DRAWING
 7TH FLOOR POWER LAYOUT
DWG NO. ARD/AR/PWR-09 **R0**



8TH FLOOR PLAN

LEGEND -

SYMBOL	DESCRIPTION	U.H. FROM F.F. (mm) UPTO BOTTOM OF BOY
[Symbol]	6/16A SWITCH SOCKET OUTLET FOR LIFT	+1800mm
[Symbol]	6/16A SWITCH SOCKET OUTLET	+230/1100mm
[Symbol]	6/16A SWITCH SOCKET OUTLET FOR HAND DRIVER	+1100mm
[Symbol]	16A POWER POINT WITH 16A SWITCH (UPS)	+1100mm
[Symbol]	DISTRIBUTION BOARD (DB FOR LIGHT)	+1650mm
[Symbol]	DISTRIBUTION BOARD (DB FOR UPS)	+1800mm
[Symbol]	DISTRIBUTION BOARD (DB FOR POWER)	+1800mm
[Symbol]	LV-BOX FOR DATA SYSTEM	
[Symbol]	LV-ISOLATOR BOX	
[Symbol]	PERFORATED TYPE CABLE TRAY FOR POWER	
[Symbol]	PERFORATED TYPE CABLE TRAY FOR DATA	
[Symbol]	LADDER TYPE CABLE TRAY FOR POWER	

OWNER
 ARDIA PROJECTS LLP
 FLAT NO-101B, 1ST FLOOR
 PLOT NO-1/B82, SUSHANT GOLF CITY
 LUCKNOW, UTTAR PRADESH-226030

PROJECT
 ARDIA DOWNTOWN
 AT SHAHEED PATH, LUCKNOW

ARCHITECT

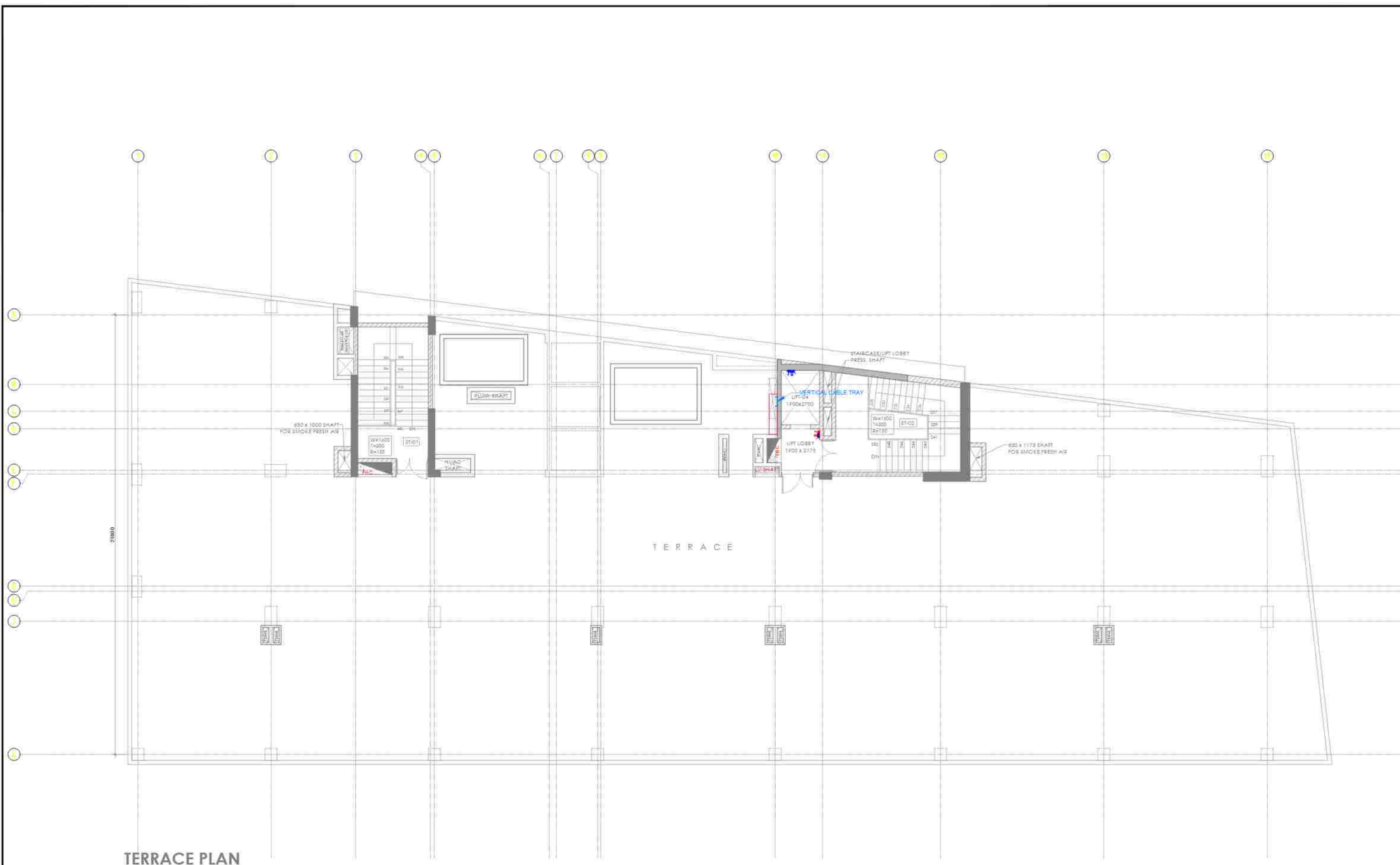
 SIKKA ASSOCIATES ARCHITECTS
 A-301, SERVICE PARK-II, SUPPLYING INCLUSIVE, NEW ORIENT NEAR 110/200
 T: +91 11 4202 3225 | F: +91 11 2626 4481 | E: saas@sikkaarch.com | W: www.sikkaarch.com

SEAL	ISSUED FOR
	<input type="checkbox"/> INFORMATION & REVIEW <input type="checkbox"/> TENDER <input type="checkbox"/> SUBMISSION <input checked="" type="checkbox"/> GFC <input type="checkbox"/> AS BUILT

#	DATE	DESCRIPTION

SCALE: 1:100
 DATE ISSUED: 30.05.2025
 DRAWN BY: SANDEEP
 CHECKED BY: SUBRATA

DRAWING
 8TH FLOOR POWER LAYOUT
 DWG NO. ARD/AR/PWR-10 R0



TERRACE PLAN

LEGEND -

SYMBOL	DESCRIPTION	SI. # FROM F.F. (mm) UPTO BOTTOM OF BOY
[Symbol]	6/16A SWITCH SOCKET OUTLET FOR LIFT	+1800mm
[Symbol]	6/16A SWITCH SOCKET OUTLET	+230/100mm
[Symbol]	6/16A SWITCH SOCKET OUTLET FOR HAND DRIVER	+1100mm
[Symbol]	16A POWER POINT WITH 16A SWITCH (UPS)	+1100mm
[Symbol]	DISTRIBUTION BOARD (DB FOR LIGHT)	+1650mm
[Symbol]	DISTRIBUTION BOARD (DB FOR UPS)	+1650mm
[Symbol]	DISTRIBUTION BOARD (DB FOR POWER)	+1650mm
[Symbol]	LV-BOX FOR DATA SYSTEM	
[Symbol]	MV-ISOLATOR BOX	
[Symbol]	PERFORATED TYPE CABLE TRAY FOR POWER	
[Symbol]	PERFORATED TYPE CABLE TRAY FOR DATA	
[Symbol]	LADDER TYPE CABLE TRAY FOR POWER	

OWNER
 ARDIA PROJECTS LLP
 FLAT NO-101B, 1ST FLOOR
 PLOT NO-1/B82, SUSHANT GOLF CITY
 LUCKNOW, UTTAR PRADESH-226030

PROJECT
 ARDIA DOWNTOWN
 AT SHAHEED PATH, LUCKNOW

ARCHITECT

SIKKA ASSOCIATES ARCHITECTS
SIKKA ASSOCIATES ARCHITECTS PVT. LTD. 10/10, 1ST FLOOR, SHAHARAH, LUCKNOW-226001
 T: +91 11 4222 3225 | F: +91 11 2626 4481 | E: saas@siikkaarchitects.com | W: www.sikkaarchitects.com

SEAL	ISSUED FOR
	INFORMATION & REVIEW
	TENDER
	SUBMISSION
	<input checked="" type="checkbox"/> GFC
<input type="checkbox"/> AS BUILT	

REVISIONS	
#	DESCRIPTION

SCALE: 1:100
 DATE ISSUED: 30.05.2025
 DRAWN BY: SANDEEP
 CHECKED BY: SUBRATA

DRAWING
 TERRACE POWER LAYOUT
 DWG NO. ARD/AR/PWR-11 R0