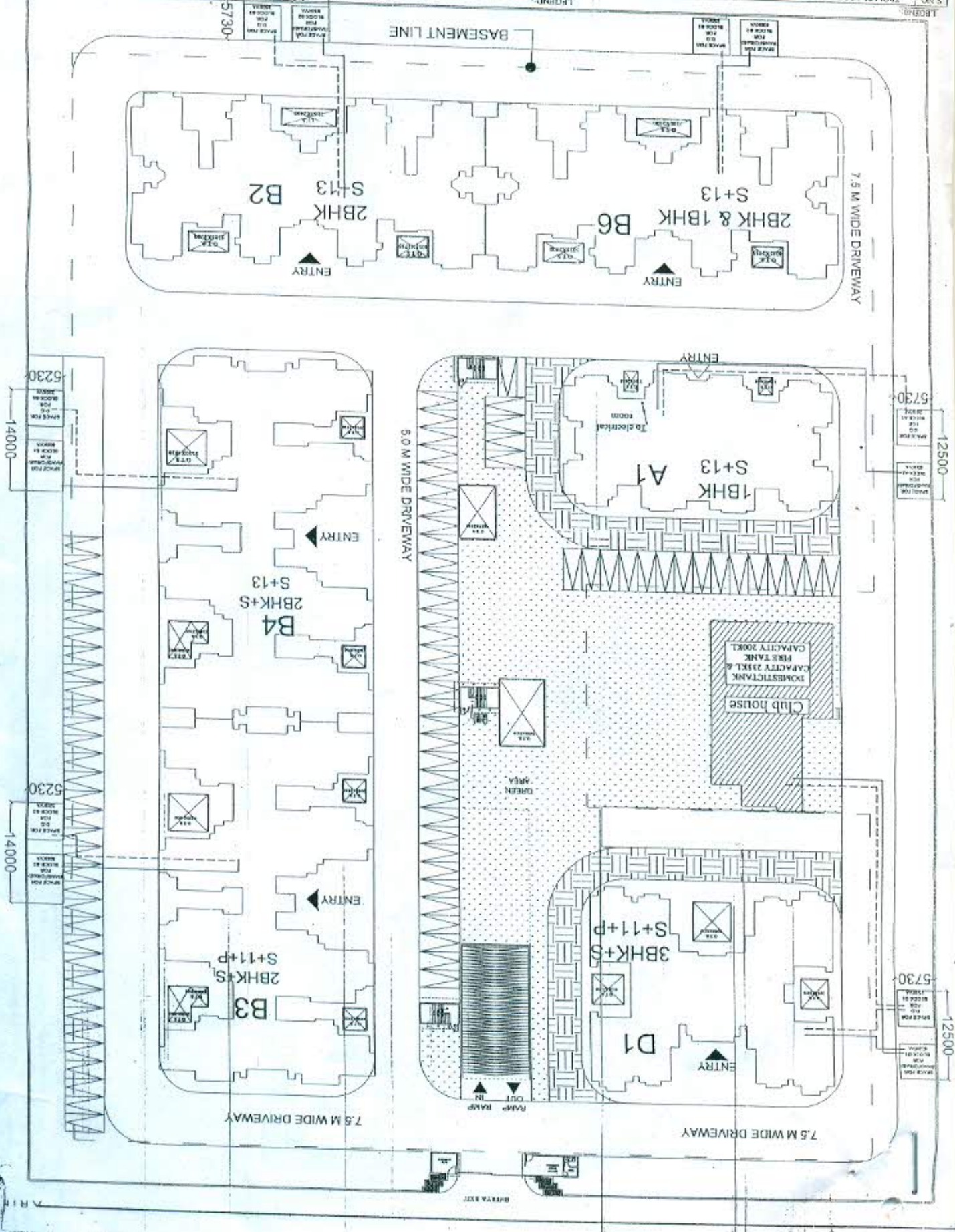


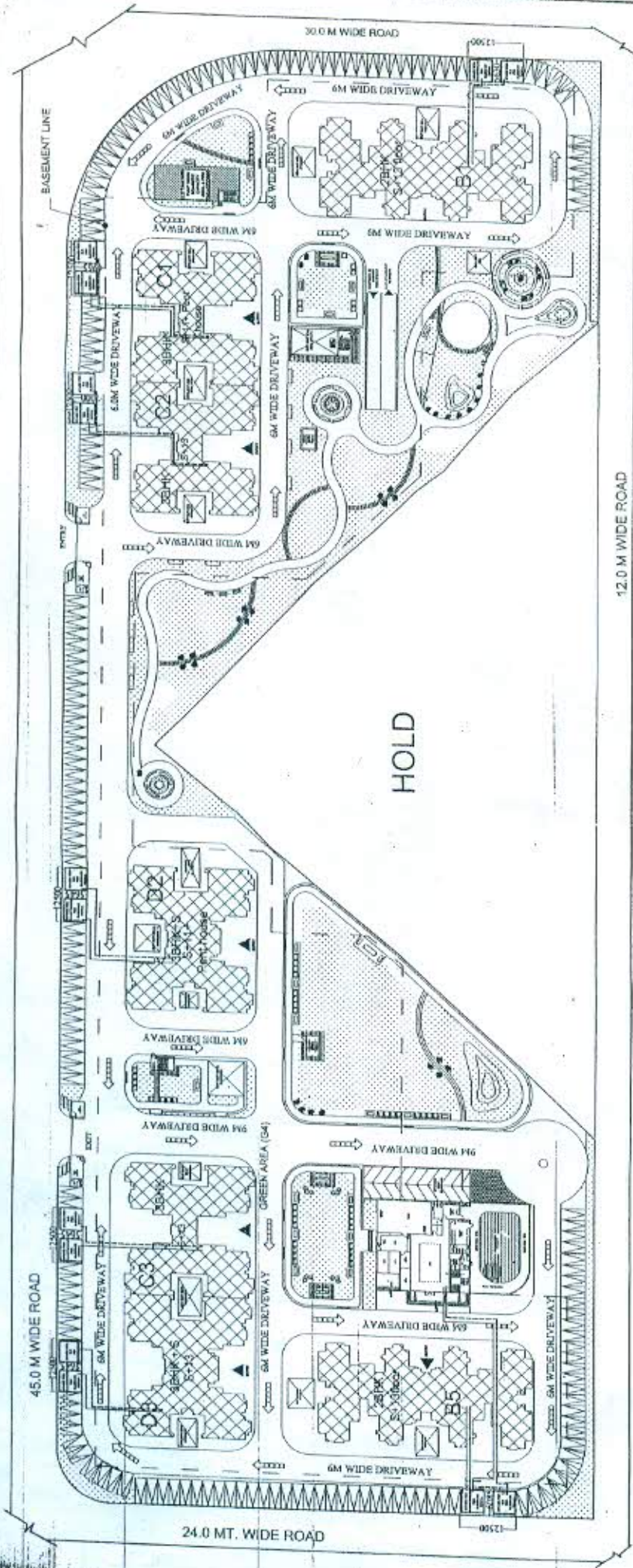
NO.	FROM PLACE TO OTHER PLACE	CABLE SIZE	NO.	FROM PLACE TO OTHER PLACE	CABLE SIZE
1.	FROM COMP. SUB-STATION TO ELECT. ROOM	3X3.5 C X 400 SQMM	1.	FROM PLACE TO OTHER PLACE	11550
2.	FROM D.G. SET TO ELECT. ROOM	PVC ARMOURD AL. CABLE 1X3.5 C X 70 SQMM	2.	FROM PLACE TO OTHER PLACE	5730
3.	FROM COMP. SUB-STATION TO ELECT. ROOM	PVC ARMOURD AL. CABLE 3X3.5 C X 400 SQMM	3.	FROM PLACE TO OTHER PLACE	5730
4.	FROM D.G. SET TO ELECT. ROOM	PVC ARMOURD AL. CABLE 1X3.5 C X 70 SQMM	4.	FROM PLACE TO OTHER PLACE	5730
5.	FROM COMP. SUB-STATION TO CLUB HOUSE	PVC ARMOURD AL. CABLE 1X3.5 C X 110 SQMM	5.	FROM PLACE TO OTHER PLACE	5730
6.	FROM D.G. SET TO CLUB HOUSE	PVC ARMOURD AL. CABLE 1X3.5 C X 70 SQMM	6.	FROM PLACE TO OTHER PLACE	5730
7.	FROM COMP. SUB-STATION TO ELECT. ROOM	PVC ARMOURD AL. CABLE 3X3.5 C X 400 SQMM	7.	FROM PLACE TO OTHER PLACE	5730
8.	FROM D.G. SET TO ELECT. ROOM	PVC ARMOURD AL. CABLE 1X3.5 C X 70 SQMM	8.	FROM PLACE TO OTHER PLACE	5730

NO.	FROM PLACE TO OTHER PLACE	CABLE SIZE	NO.	FROM PLACE TO OTHER PLACE	CABLE SIZE
1.	FROM COMP. SUB-STATION TO ELECT. ROOM	3X3.5 C X 400 SQMM	1.	FROM PLACE TO OTHER PLACE	11550
2.	FROM D.G. SET TO ELECT. ROOM	PVC ARMOURD AL. CABLE 1X3.5 C X 70 SQMM	2.	FROM PLACE TO OTHER PLACE	5730
3.	FROM COMP. SUB-STATION TO ELECT. ROOM	PVC ARMOURD AL. CABLE 3X3.5 C X 400 SQMM	3.	FROM PLACE TO OTHER PLACE	5730
4.	FROM D.G. SET TO ELECT. ROOM	PVC ARMOURD AL. CABLE 1X3.5 C X 70 SQMM	4.	FROM PLACE TO OTHER PLACE	5730
5.	FROM COMP. SUB-STATION TO CLUB HOUSE	PVC ARMOURD AL. CABLE 1X3.5 C X 110 SQMM	5.	FROM PLACE TO OTHER PLACE	5730
6.	FROM D.G. SET TO CLUB HOUSE	PVC ARMOURD AL. CABLE 1X3.5 C X 70 SQMM	6.	FROM PLACE TO OTHER PLACE	5730
7.	FROM COMP. SUB-STATION TO ELECT. ROOM	PVC ARMOURD AL. CABLE 3X3.5 C X 400 SQMM	7.	FROM PLACE TO OTHER PLACE	5730
8.	FROM D.G. SET TO ELECT. ROOM	PVC ARMOURD AL. CABLE 1X3.5 C X 70 SQMM	8.	FROM PLACE TO OTHER PLACE	5730



REVISIONS

NO.	DESCRIPTION	DATE
1.	ISSUED FOR TENDER	15/05/2010
2.	REVISED FOR TENDER	15/05/2010
3.	REVISED FOR TENDER	15/05/2010
4.	REVISED FOR TENDER	15/05/2010
5.	REVISED FOR TENDER	15/05/2010
6.	REVISED FOR TENDER	15/05/2010
7.	REVISED FOR TENDER	15/05/2010
8.	REVISED FOR TENDER	15/05/2010
9.	REVISED FOR TENDER	15/05/2010
10.	REVISED FOR TENDER	15/05/2010



HOLD

LOADING:

LINE	FROM PLACE TO OTHER PLACE	CABLE SIZE
1.	FROM COMP. SUB-STATION TO ELECT. ROOM	3X1.5C X 30M SQMM PVC ARMOURD ALL CABLE
2.	FROM D.G. SET TO ELECT. ROOM	2X1.5C X 24 SQMM PVC ARMOURD ALL CABLE
3.	FROM COMP. SUB-STATION TO CLUB HOUSE	3X1.5C X 30M SQMM PVC ARMOURD ALL CABLE
4.	FROM D.G. SET TO CLUB HOUSE	2X1.5C X 24 SQMM PVC ARMOURD ALL CABLE

KEY PLAN:



NO.	REVISION	DATE	BY	STATUS	REF.	DRAWING NO.
05						
04						
03						
02						
01						

PROJECT TITLE: HIMALAYA ENCLAVE AT SEC-17, VISHVAKVA SCHEME, LUDHIANA.

DESIGNED BY: ARNEM

EXTERNAL ELECTRICAL CABLE LAYOUT PLAN

DATE: 28 JUNE '16

SCALE: N.T.S.

PROJECT NO: 018100-PG-01-SRE-001.02

DATE: 2016/06

NOTES:

- All dimensions to be scaled off the drawing.
- Only written dimensions in millimeters to be followed.
- Any discrepancy found in the drawing to be immediately get clarif.
- All drawings are submitted and shall be read in conjunction with the drawings.

This drawing is the property of ARNEM Consultancy Services Pvt. Ltd. and is not to be reproduced, copied, handed over to a third party or used for any other purpose other than for which it has been prepared.