

TYPICAL FIRST/SECOND/THIRD FLOOR PLAN



MOHIT SINGH
 ARCHITECTS
 B-ARCH SPA BHOPAL
 CA/2018/92317

DSEIGN VIEWS

MOHIT SINGH & ASSOCIATES
 ARCHITECTS
 B-ARCH SPA BHOPAL
 CA/2018/92317



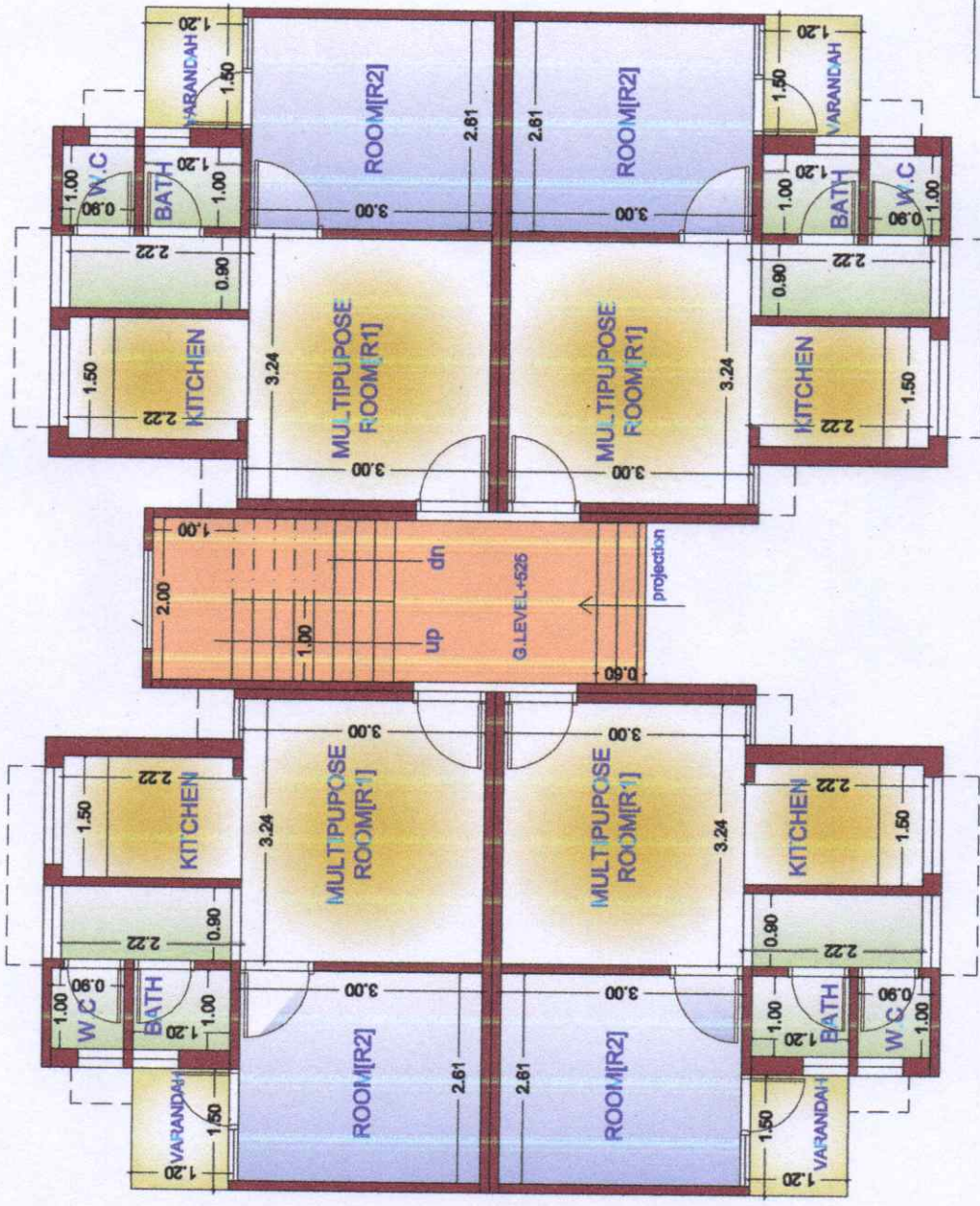
NORTH



SHEET TITLE
 CLUSTER PLAN

TOTAL LAND AREA - 7819.00 SQ.M.T
 TOTAL PLOTTED AREA - 3182.74 SQ.M
 BLOCK 1 - TOTAL 64 UNIT, BLOCK 2 - TOTAL 48 UNIT
 BLOCK 3 - TOTAL 92 UNIT, BLOCK 4 - TOTAL 80 UNIT
 BLOCK 5 - TOTAL 80 UNIT
 TOTAL UNITS - 364
 NO OF FLOORS - G+3

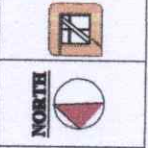
PROJECT NAME - MOHAN PMAY URBAN
 PROPOSED PMAY E.W.S HOUSING SCHEME FOR
 MOHAN INFRADVELOPERS PVT. LTD. AT
 KHASRA NO. 572 AT VILLAGE HAMIRPUR,
 TEH& DISTT. BARRILLIYULP



GROUND FLOOR PLAN

MOHIT SINGH
 B.ARCH SPA BHOPAL
 CA/2019/92317

DESIGN VIEWS
 1. SECTION
 2. ELEVATION
 3. PERSPECTIVE
 4. FLOOR PLAN
 5. SITE PLAN



SHEET TITLE
 CLUSTER PLAN

TOTAL LAND AREA = 7819.06 SQ.MT
TOTAL PLOTTED AREA = 3182.74 SQ.MT
 BLOCKS 1- TOTAL 64 UNIT, BLOCK 2- TOTAL 48 UNIT
 BLOCK 3- TOTAL 92 UNIT, BLOCK 4- TOTAL 88 UNIT
 BLOCK 5- TOTAL 88 UNIT
 TOTAL UNITS = 264
 NO OF FLOORS = G+3

PROJECT NAME-MOHAN PMAY URBAN
PROPOSED PMAY E.W.S HOUSING SCHEME FOR
MOHAN INFRADEVELOPERS [P] L.LD. AT
KHASRA NO. 572 AT VILLAGE HAMIRPUR,
TEH& DISTT.BAREILLY [U.P]

WATER SYSTEM AND DRINKING WATER SUPPLY

GROUND WATER WILL BE SUPPLIED TO OVER HEAD TANK(O.H.T) VIA SUBMERSIBLE PUMP. WATER FROM O.H.T WILL BE SUPPLIED TO EACH SEPARATE 500 LTR. P.V.C TANKS PROVIDED TO EACH INDIVIDUAL HOUSE.

THE CONSTRUCTION OF O.H.T WILL BE AS PER STANDARDS SPECIFIED.

THE OPERATION OF SUBMERSIBLE PUMPS WILL BE HANDED OVER TO RESIDENT WELFARE ASSOCIATION (R.W.A) AFTER COMPLETION OF PROJECT AND THERE ON HANDING OVER.

PROJECT NAME: MOHAN PMAY URBAN
 PROPOSED PMAY E.W.S HOUSING SCHEME FOR
 MOHAN INFRADEVELOPERS PVT. LTD. AT
 KHASRA NO. 572 AT VILLAGE HAMIRPUR,
 TEH & DISTT. BAREILLY (U.P.)

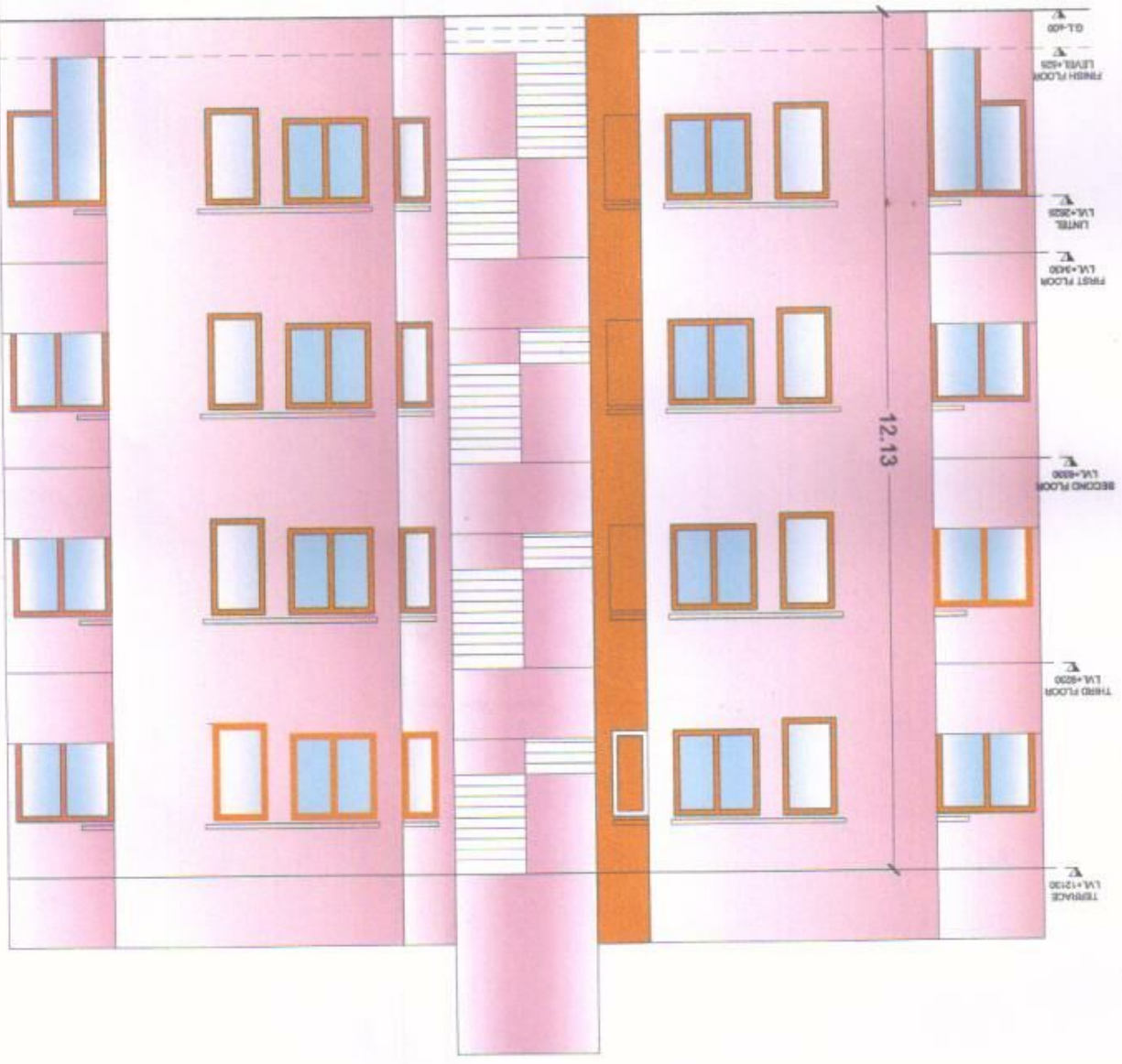
TOTAL PLOTTED AREA - 3182.74 SQ.M
 BLOCKS 1 - TOTAL 64 UNIT, BLOCK 2 - TOTAL 48 UNIT
 BLOCK 3 - TOTAL 92 UNIT, BLOCK 4 - TOTAL 88 UNIT
 BLOCK 5 - TOTAL 88 UNIT
 TOTAL UNITS - 364
 NO OF FLOORS - 0+3

SHEET TITLE
 ELEVATION



DESIGNER'S SIGNATURE
 MOHIT SINGH
 8 ARCH SPA BHOPAL
 CA/2018/92317

FRONT ELEVATION



12.13

TERRACE
 L.V. +12.00
 THIRD FLOOR
 L.V. +8.00
 SECOND FLOOR
 L.V. +6.00
 FIRST FLOOR
 L.V. +3.00
 FINISH FLOOR
 L.V. +0.00

PROJECT NAME-MOHAN PMAY URBAN
 PROPOSED PMAY E.W.S HOUSING SCHEME FOR
 MOHAN INFRADEVELOPERS P.L.D. AT
 KHASRA NO. 572 AT VILLAGE HAMIRPUR,
 TEH& DISTT. BAREILLY (U.P.)

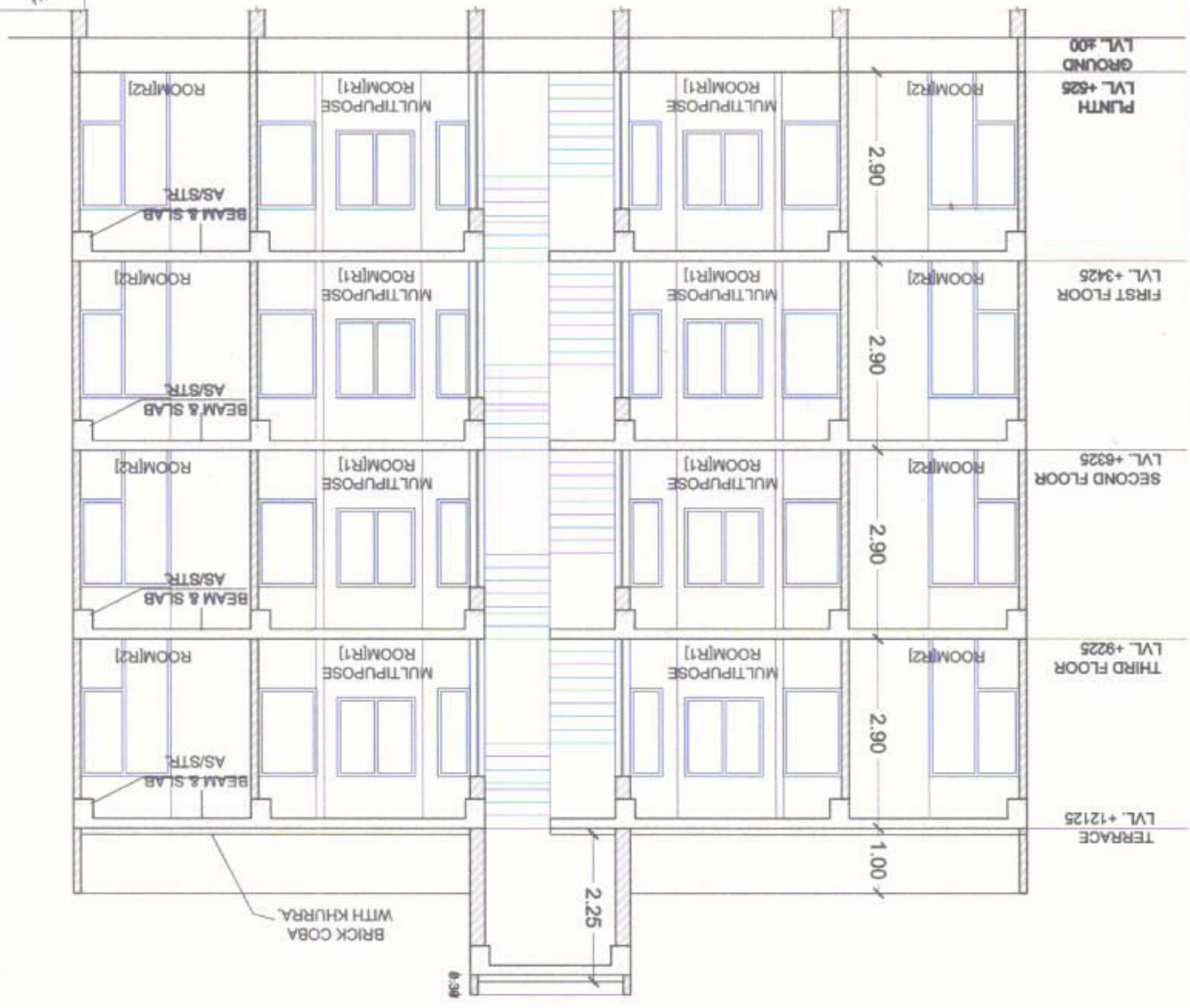
TOTAL LAND AREA = 7819.86 SQ.MT
 TOTAL PLOTTED AREA = 3182.74 SQM
 BLOCK 1- TOTAL 64 UNIT, BLOCK 2- TOTAL 48 UNIT
 BLOCK 3- TOTAL 52 UNIT, BLOCK 4- TOTAL 88 UNIT
 BLOCK 5- TOTAL 88 UNIT
 TOTAL UNIT = 330
 NO OF FLOORS = 0+5

SECTION
 SHEET TITLE



DESIGN VERBS
 IN CASE OF ANY DISCREPANCY
 BETWEEN THE DRAWING AND THE
 SPECIFICATION, THE SPECIFICATION
 SHALL PREVAIL.

SECTION AT X-X
 scale:-1:100



MOHT SINGH
 ARCHITECT

WATER SUPPLY SHALL BE PROVIDED BY US THROUGH OVERHEAD TANKS.