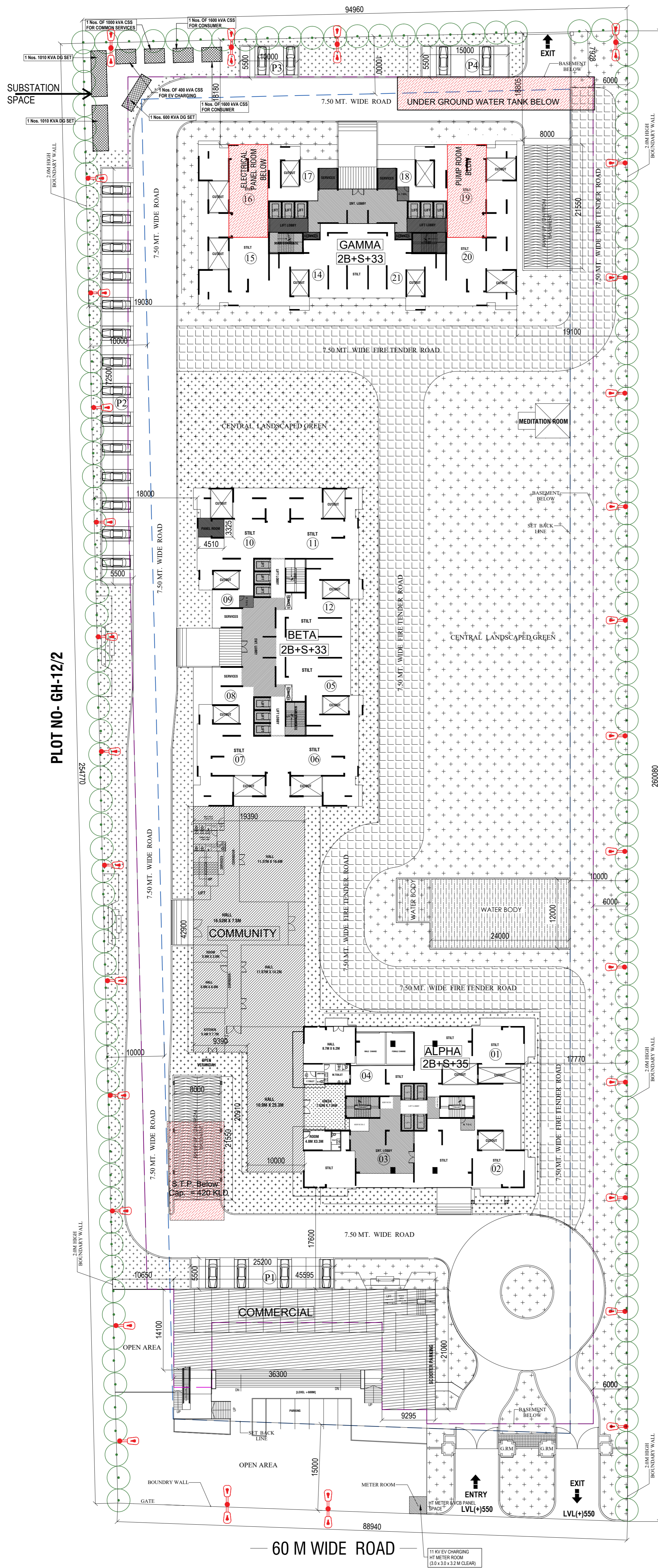


-24 M WIDE ROAD -



SUMMARY OF ELECTRICAL LOAD - Electrical Load Calculation of SKA Destiny One				
SUBSTATION SUMMARY				
S.no	Description	Nos. of Unit	Total Load	Equipments Selection
CALCULATION FOR TRANSFORMERS				
1	Consumer Load	645	= 2500	KVA Recommended Transformers @ 80% Loading = 2 nos. 1600 KVA 11/0.433 kV Compact Substation
2	Common Services		= 790	KVA Recommended Transformers @ 80% Loading = 1 nos. 1000 KVA 11/0.433 kV Compact Substation(Considering Fire Dead Load)
3	EV Charging		= 300	KVA Recommended Transformers @ 80% Loading = 1 nos. 400 KVA, 11/0.433 kV Compact Substation (Considering Future Contingency)
	Total	645	= 3590	KVA
CALCULATION FOR DG SETS				
4	Essential Load		= 2589	KVA Recommended DG Sets = 2 nos 1010 KVA & 1 no 600 KVA DG Sets
	Total		= 2589	KVA

PLOT NO- GH-12/2

PLOT NO- GH-12A

Project :
 PROPOSED GROUP HOUSING (SKA DESTINY ONE)
 PROJECT AT PLOT NO GH-12B, SECTOR - ZETA-1
 AT G. NOIDA U.P.

Title :
 SITE PLAN.
Sub-title :
 EXTERNAL ELECTRICAL LAYOUT

Drawing Released For :
 APPROVAL
 ADVANCE COPY
 SUBMISSION
 CONSTRUCTION

Drg. No. : SKA/EX/S-03
Date : Nov. 2023
Scale : 1 : 320

Drawn By : Abhilash
Design By : R.k
Ckd By : Anand Havelia

Architects :
ATWIN
 ISO 9001-2008 CERTIFIED
BRIJ (INDIA) ARCHITECTS
 F-89, GREEN PARK, NEW DELHI-16.
 Ph. +91-11-26853815, 26853077 Fax : +91-11-26850788
 E-mail : brijarch@rediffmail.com, info@atwin.in Website: www.atwin.in

Services Consultant :
Consummate Engineering Services (P) Ltd.
 Noida Office : B - 67, Sector - 67, Noida - 201 301
 Tel : (0120) 6613500 (24 Lines)
cespl
 Lko. Office : R 006, Rohtas Plumeria, Gomti Nagar, Lucknow
 e mail : mail@cespl.in, website : www.cespl.in